

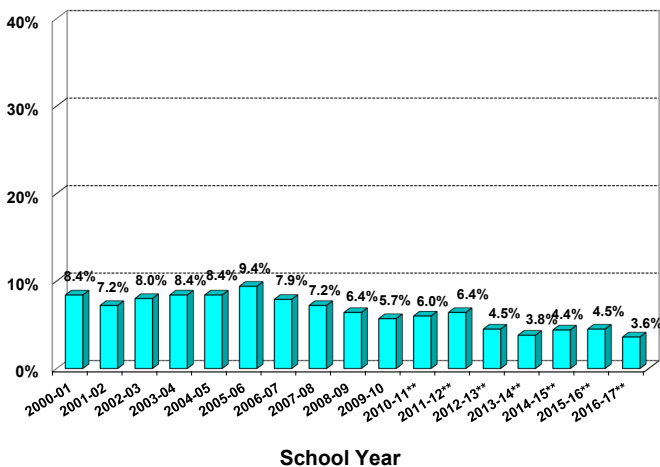
Q and A

Boston Public Schools 2016-2017: Student Dropout Rates

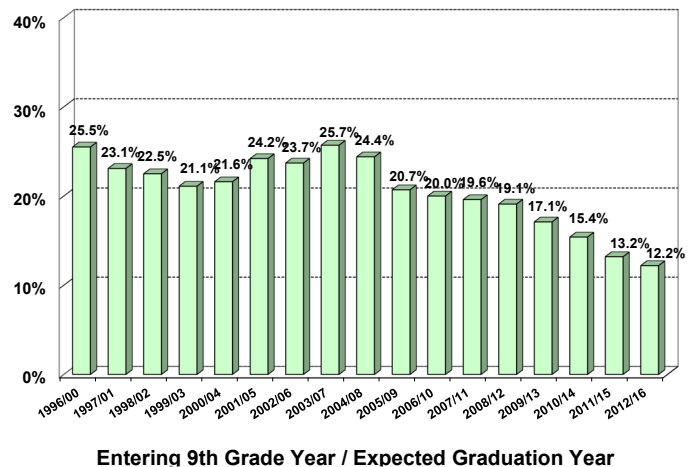
This document presents answers to some of the most frequently asked questions about student dropout in the Boston Public Schools. As defined by the Massachusetts Department of Elementary and Secondary Education (MA DESE) and the National Center for Education Statistics, a student is considered to be a dropout at the end of the school year if he or she is not in school, has not graduated, and has not transferred to another school system*. Please see the attached “Understanding Annual High School Dropout Calculations” for details on the methodology. It is the goal of Boston Public Schools to keep all high school students in schools and to prepare them for College, Career, and beyond.

How Have System Wide Dropout Rates Varied Over Time?

Annual Dropout Rates* Systemwide: Grades 9-12



Ninth Grade Cohort Dropout Rates Systemwide



- The annual rate analysis answers the question, “How many students in grades 9-12 drop out in one year?”
- The grades 9–12 annual dropout rate in 2016-2017 was 3.6%. This represents a 0.9 percentage point decrease from the previous year (170 fewer students), and is the lowest rate ever.

- The cohort rate analysis answers the question, “Of the students who entered BPS as 9th graders, what proportion dropped out over the next **five** years?”
- The 9th grade cohort dropout rate decreased to its lowest point ever at 12.2% for the 2012/2016 cohort.
- Although the 9th grade cohort dropout rate has fluctuated from year to year, the rate has declined steadily for the past nine years.

Note: Final annual dropout rates are reported in this document. These final dropout rates differ from the June rates shown in the School Report Cards because they account for changes in student status between June and the following October. This is done to conform with MA DESE guidelines. It should be noted that from SY2003-04 onward, the student status reported in the next school year October 1 Student Information Management System (SIMS) is used for the adjustment rather than identified by school personnel via a survey as done in previous years. Also, beginning with SY2006-07, BPS Student Discharge Codes have been changed to align with the enrollment status codes used by the MA DESE.

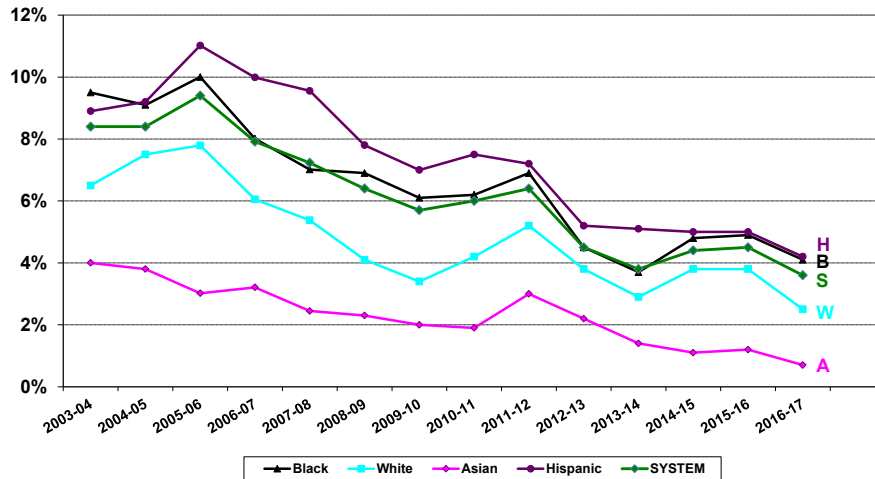
* Beginning in SY2006-07, students who died or were expelled are excluded from the population instead of being counted as other loss. Caution should be used when comparing data from 2006-07 and later with data from earlier years.

** Beginning with SY2010-11, BPS dropouts who were found enrolled in another district or Charter school based on the statewide October 1 SIMS for the subsequent school year are counted as returned dropouts.

Q and A Boston Public Schools 2016-2017: Student Dropout Rates

How Have System Wide Dropout Rates Varied Over Time by Racial/Ethnic Group?

Annual Dropout Rate by Racial/Ethnic Group:
2003-04 through 2016-17



	Black	White	Asian	Hispanic	SYSTEM
2003-04	9.5%	6.5%	4.0%	8.9%	8.4%
2004-05	9.1%	7.5%	3.8%	9.2%	8.4%
2005-06	10.0%	7.8%	3.0%	11.0%	9.4%
2006-07	8.0%	6.1%	3.2%	10.0%	7.9%
2007-08	7.0%	5.4%	2.4%	9.6%	7.2%
2008-09	6.9%	4.1%	2.3%	7.8%	6.4%
2009-10	6.1%	3.4%	2.0%	7.0%	5.7%
2010-11	6.2%	4.2%	1.9%	7.5%	6.0%
2011-12	6.9%	5.2%	3.0%	7.2%	6.4%
2012-13	4.5%	3.8%	2.2%	5.2%	4.5%
2013-14	3.7%	2.9%	1.4%	5.1%	3.8%
2014-15	4.8%	3.8%	1.1%	5.0%	4.4%
2015-16	4.9%	3.8%	1.2%	5.0%	4.5%
2016-17	4.1%	2.5%	0.7%	4.2%	3.6%

- Dropout rates have decreased steadily for all racial/ethnic groups since 2005-06. In 2016-17, dropout rates were the lowest ever in the reporting period for all racial groups except Black students group.
- Over the last year, dropout rates for every group decreased by 0.5 to 1.3 percentage points, with the largest drop experienced by White students (1.3 points), followed by Black and Hispanic students (0.8 points each), and Asian students (0.5 points).

How Do Dropout Rates Vary by Racial/Ethnic Group and Gender?

	Overall		Male		Female	
	Percent	Number	Percent	Number	Percent	Number
Black	4.1%	285	5.0%	179	3.1%	106
White	2.5%	53	2.7%	28	2.4%	25
Asian	0.7%	12	0.8%	7	0.6%	5
Hispanic	4.2%	302	5.0%	185	3.4%	117
TOTALS**	3.6%	660	4.3%	402	2.9%	258

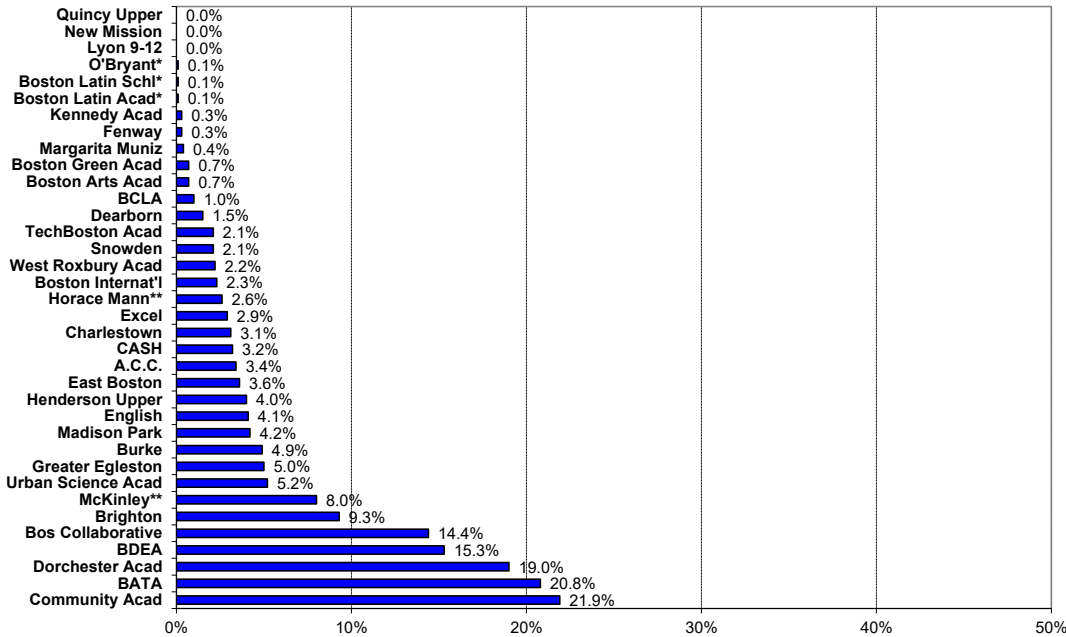
** Totals include 2 Multiracial and 6 Native American dropouts who are not shown separately by gender.

- Overall, more males than females dropped out.
- The dropout rate is lowest among Asian female students and highest among Black and Hispanic males.
- Gender differences are most pronounced among Black students.

Q and A Boston Public Schools 2016-2017: Student Dropout Rates

How do Dropout Rates Differ Across Schools?

Annual Dropout Rate by School: Grades 9-12, 2016-17



- Dropout rates vary substantially across schools.
- Dropout rates range from a low of 0% to a high of 21.9%.
- School enrollments in grades 9-12 ranged from 38 to slightly over 1,600.

* Examination School ** Special Needs School. Note: Students who dropped out are attributed to the last school to which they were assigned.

How do Dropout Rates Vary Across Neighborhoods?

- Dropout rates vary substantially according to where students live.
- The percentage of dropouts varies from a low of 0.6% in West Roxbury to a high of 7.3% in Allston.
- There is also considerable variation in the number of students from each neighborhood who attend Boston Public Schools.

Annual Dropout Rate by Neighborhood (Zip Code): Grades 9-12, 2016-2017

	Percent	Number	Students in Neighborhood
Allston	7.3%	21	286
Back Bay/Kenmore*	1.9%	7	374
Boston Central**	1.7%	4	233
Brighton	3.8%	21	552
Charlestown	2.7%	11	407
Codman Square	3.9%	93	2396
East Boston	3.4%	69	2054
Fields Corner	4.1%	47	1152
Grove Hall	4.1%	62	1528
Hyde Park	2.2%	31	1414
Jamaica Plain	3.7%	26	708
Mattapan	4.3%	47	1091
Roslindale	3.4%	35	1038
Roxbury	4.7%	56	1204
Roxbury Crossing	4.0%	14	350
South Boston	4.7%	29	619
South End	4.0%	25	629
Uphams Corner	3.9%	52	1335
West Roxbury	0.6%	4	640

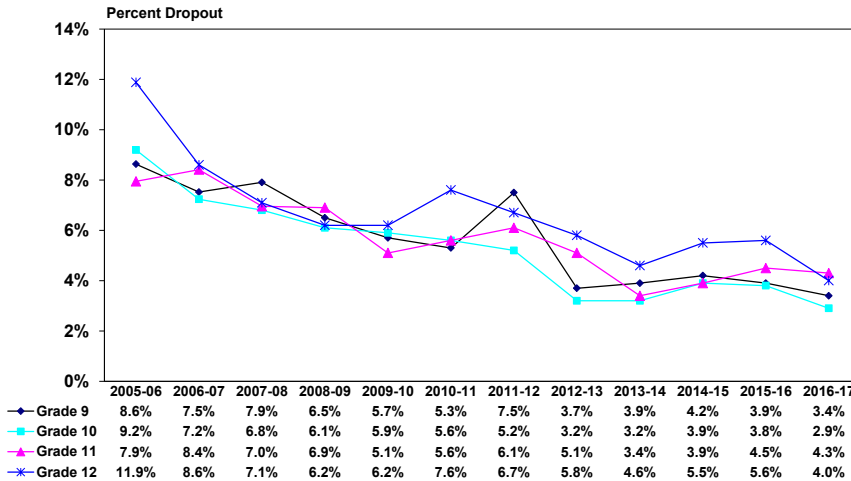
* 02115, 02116, 02215, 02199

** 02108 through 02111, 02113, 02114, 02210 (Downtown, West End, North End, Chinatown)

Q and A Boston Public Schools 2016-2017: Student Dropout Rates

How do Dropout Rates Vary Across Grade Levels?

Annual Dropout Rates by Grade Level: 2005-06 to 2016-17



- Dropout rates across grade levels have fluctuated over the years
- 2016-17 had the lowest dropout rate over this 12-year period for all grades except grade 11.
- Compared to 2015-16, dropout rates for every grade decreased; the differences ranged from a low of 0.2 percentage points in grade 11 to a high of 1.6 percentage points in grade 12.

How do Dropout Rates Differ Between Competency Determination* (CD) Earners and Students Without a CD?

- Students who did not pass grade 10 MCAS had multiple opportunities to pass MCAS through re-tests and/or MCAS Performance Appeals process before their scheduled graduation date.
- Students who have not yet earned a CD (grade 11: 15.3%; grade 12: 12.0%) are more likely to drop out than students who have fully (grade 11: 0.7%; grade 12: 1.6%) or partially met the CD requirements (grade 11: 2.9%; grade 12: 4.5%).
- Among those dropouts 48 11th graders had already attained or partially attained a CD, and 116 12th graders had done so before dropping out of school.

2016-17 Dropout Rates by CD Attainment Status

Grade	CD Status	Total Enrollment	# of Dropouts	Dropout Rate
11 (Class of 2018)	Met CD*	2,373	17	0.7%
	Partially Met CD**	1,077	31	2.9%
	Did Not Meet CD	910	139	15.3%
12 (Class of 2017)	Met CD*	2,652	42	1.6%
	Partially Met CD**	1,640	74	4.5%
	Did Not Meet CD	664	80	12.0%

* Earned a scaled score of at least 240 (*Proficient or Advanced*) on both the grade 10 MCAS ELA and Mathematics tests, also earned a minimum of 220 (*Needs Improvement*) on one of the high school Science and Technology/Engineering (STE) tests through the spring 2017 administration.

** Earned a scaled score between 220 and 238 (*Needs Improvement*) on the grade 10 MCAS ELA and/or Mathematics test, and earned at least 220 on one of the high school STE tests through the spring 2017 administration. These students needed to complete an Educational Proficiency Plan (EPP) in ELA and/or Math.

How do Dropout Rates Vary Among Special Populations?

2016-17 Dropout Rates by Special Populations

	Total Enrollment	# of Dropouts	Dropout Rate
Special Education	3,353	157	4.7%
Non-Special Education	14,813	503	3.4%
LEP	4,411	208	4.7%
Non LEP	13,755	452	3.3%
Econ. Disadvantaged*	12,987	495	3.8%
Non Econ. Disadvantaged	5,179	165	3.2%

Annual Dropout Rates for Special Populations: 2011-12 to 2016-17

	2011-12	2012-13	2013-14	2014-15	2015-16	2016-17
Special Education	7.5%	6.1%	5.5%	5.5%	5.2%	4.7%
Non-Special Education	6.2%	4.1%	3.4%	4.1%	4.3%	3.4%
LEP	7.1%	5.1%	4.8%	6.0%	6.7%	4.7%
Non LEP	6.3%	4.3%	3.6%	4.0%	3.9%	3.3%
Low-Income*	6.0%	4.2%	3.9%	4.3%	4.1%	3.8%
Non Low-Income	7.7%	5.2%	3.4%	4.5%	5.4%	3.2%

* Beginning with SY2014-15, Economically Disadvantaged replaced Low-Income group.

Econ. Disadvantaged includes students participated in one of the following state-administered programs: SNAP (food stamps); TAFDC (welfare); DCF (foster care); MassHealth (Medicaid).

- The SY2016-17 dropout rates for students with disabilities (SPED) and Limited English Proficient students (LEP) are somewhat higher than for students without disabilities and Non-Limited English Proficient students (1.3 and 1.4 points higher, respectively); economically disadvantaged students also showed a 0.6 percentage point higher than their peers who are not economically disadvantaged.
- Compared to SY2015-16, dropout rates in SY2016-17 for LEP students decreased 2.0 percentage points, and for SPED students dropped 0.5 points; the rate for economically disadvantaged also saw a 0.3 point decrease.
- Over the 6-year reporting period, since 2011-12, all student groups showed a noticeable decrease in their dropout rates and were at the lowest point.

Boston Public Schools Annual Dropout Rate by School: Grades 9-12

District	2010-11***		2011-12***		2012-13***		2013-14***		2014-15***		2015-16***		2016-17***	
	%	N	%	N	%	N	%	N	%	N	%	N	%	N
A.C.C.	6.5%	[15/231]	4.1%	[9/218]	0.0%	[0/228]	1.3%	[3/227]	2.6%	[6/234]	2.1%	[5/236]	3.4%	[8/232]
BATA	6.0%	[19/315]	10.1%	[36/358]	6.5%	[25/384]	9.9%	[37/373]	12.9%	[50/387]	19.5%	[74/380]	20.8%	[68/327]
BCLA	0.7%	[3/437]	2.6%	[12/470]	1.4%	[7/502]	0.8%	[4/522]	1.2%	[6/520]	1.4%	[7/511]	1.0%	[5/496]
BDEA	17.8%	[100/561]	24.8%	[149/602]	30.7%	[158/514]	16.1%	[78/485]	21.7%	[108/498]	16.6%	[79/477]	15.3%	[75/490]
Boston Arts Acad	1.6%	[6/379]	1.2%	[5/404]	0.7%	[3/411]	0.4%	[2/448]	1.1%	[5/439]	2.1%	[9/434]	0.7%	[3/450]
Boston Collaborative	NA	NA	NA	NA	NA	NA	NA	NA	NA	NA	6.6%	[20/304]	14.4%	[51/353]
Boston Green Acad	NA	NA	3.1%	[10/318]	3.9%	[13/330]	3.6%	[12/337]	3.2%	[10/314]	4.7%	[14/297]	0.7%	[2/291]
Boston Internat'l	2.7%	[6/224]	0.7%	[2/270]	2.9%	[8/276]	4.0%	[11/273]	4.2%	[13/307]	2.2%	[7/319]	2.3%	[7/304]
Boston Latin Acad*	0.7%	[8/1123]	0.6%	[7/1096]	0.5%	[5/1060]	0.0%	[0/1101]	0.3%	[4/1167]	0.4%	[5/1156]	0.1%	[1/1151]
Boston Latin Schl*	0.0%	[0/1591]	0.0%	[0/1549]	0.1%	[1/1570]	0.1%	[1/1571]	0.1%	[1/1609]	0.1%	[1/1639]	0.1%	[1/1620]
Brighton	10.7%	[147/1369]	9.8%	[131/1343]	6.2%	[74/1196]	7.2%	[77/1073]	5.6%	[56/995]	7.6%	[73/960]	9.3%	[80/864]
Burke	10.8%	[75/696]	13.0%	[84/646]	5.5%	[32/578]	4.3%	[22/512]	5.4%	[30/560]	6.3%	[36/569]	4.9%	[27/554]
CASH	6.3%	[26/415]	10.9%	[53/485]	4.2%	[19/449]	2.3%	[10/430]	3.4%	[14/409]	3.2%	[14/442]	3.2%	[14/440]
Charlestown	10.4%	[111/1063]	8.9%	[96/1075]	5.6%	[56/1008]	2.2%	[21/972]	6.7%	[69/1027]	5.3%	[53/1008]	3.1%	[30/982]
Community Acad	23.1%	[27/117]	16.5%	[18/109]	18.6%	[21/113]	11.9%	[13/109]	29.9%	[46/154]	30.2%	[32/106]	21.9%	[23/105]
Dearborn	NA	NA	NA	NA	NA	NA	0.0%	[0/30]	0.0%	[0/84]	1.9%	[2/106]	1.5%	[2/136]
Dorchester Acad	14.7%	[75/510]	13.2%	[63/476]	6.6%	[31/469]	5.4%	[24/445]	10.8%	[44/408]	15.4%	[22/143]	19.0%	[23/121]
East Boston	3.2%	[44/1364]	5.2%	[74/1412]	3.7%	[51/1385]	4.3%	[64/1489]	2.6%	[39/1485]	3.8%	[61/1602]	3.6%	[55/1544]
English	4.6%	[34/741]	7.3%	[57/783]	12.0%	[83/692]	9.7%	[59/609]	5.1%	[32/630]	8.5%	[53/622]	4.1%	[24/585]
Excel	3.7%	[16/428]	11.5%	[85/741]	4.0%	[27/672]	8.3%	[54/650]	8.8%	[53/602]	6.2%	[36/583]	2.9%	[15/512]
Fenway	1.3%	[4/301]	1.6%	[5/318]	0.6%	[2/320]	0.0%	[0/330]	0.3%	[1/323]	1.2%	[4/339]	0.3%	[1/353]
Greater Egleston	21.4%	[45/210]	20.4%	[55/270]	8.3%	[20/240]	8.7%	[21/242]	4.9%	[12/247]	10.5%	[31/295]	5.0%	[14/279]
Henderson Upper	NA	NA	NA	NA	0.0%	[0/34]	8.8%	[7/80]	2.2%	[3/134]	0.6%	[1/161]	4.0%	[8/200]
Horace Mann**	0.0%	[0/42]	2.2%	[1/46]	4.7%	[2/43]	9.8%	[4/41]	11.1%	[4/36]	5.3%	[2/38]	2.6%	[1/38]
Kennedy Acad	0.0%	[0/211]	0.0%	[0/220]	0.7%	[2/270]	1.2%	[4/327]	1.4%	[5/366]	2.0%	[7/343]	0.3%	[1/362]
Lyon 9-12	1.7%	[1/60]	1.3%	[1/76]	0.7%	[1/135]	1.5%	[2/131]	1.5%	[2/134]	3.2%	[4/125]	0.0%	[0/123]
Madison Park	5.3%	[68/1295]	5.4%	[68/1251]	4.2%	[48/1146]	5.0%	[57/1149]	6.8%	[65/952]	6.1%	[54/885]	4.2%	[35/841]
Margarita Muniz	NA	NA	NA	NA	0.0%	[0/81]	0.6%	[1/156]	2.6%	[6/230]	1.7%	[5/291]	0.4%	[1/270]
McKinley**	14.0%	[43/307]	11.6%	[32/275]	19.1%	[54/282]	8.7%	[22/254]	13.2%	[33/250]	12.0%	[28/234]	8.0%	[21/261]
New Mission	0.0%	[0/249]	0.0%	[0/247]	0.0%	[0/267]	0.0%	[0/280]	0.7%	[2/293]	0.0%	[0/319]	0.0%	[0/313]
O'Bryant*	0.6%	[6/1006]	1.0%	[10/1025]	0.7%	[7/1063]	0.1%	[1/1071]	0.4%	[4/1120]	0.7%	[8/1137]	0.1%	[1/1111]
Quincy Upper	2.3%	[5/218]	2.1%	[5/235]	0.0%	[0/227]	0.0%	[0/228]	1.3%	[3/232]	0.0%	[0/224]	0.0%	[0/228]
Snowden	3.7%	[15/403]	8.4%	[37/439]	4.1%	[17/417]	4.5%	[18/399]	1.8%	[7/391]	2.4%	[9/377]	2.1%	[9/427]
TechBoston Acad	NA	NA	1.5%	[8/518]	0.5%	[3/560]	3.3%	[19/571]	1.7%	[10/579]	2.2%	[13/586]	2.1%	[12/581]
Urban Science Acad	8.7%	[31/357]	7.2%	[50/692]	5.1%	[32/626]	2.9%	[16/545]	4.4%	[23/527]	5.6%	[30/537]	5.2%	[24/459]
West Roxbury Acad	NA	NA	7.1%	[52/728]	3.4%	[23/686]	5.1%	[34/670]	6.5%	[39/601]	4.7%	[27/574]	2.2%	[12/534]

Dropout rates, number of dropouts, and total enrollments (excludes transfers out) are shown for each school.

Students who dropped out are attributed to the last school to which they were assigned.

* Examination School

** Special Needs School

*** Beginning with SY2010-11, BPS dropouts who were found enrolled in another district or Charter school based on the statewide October 1 SIMS for the subsequent school year are counted as returned dropouts.

Boston Public Schools

Annual Dropout by Racial/Ethnic Group and Systemwide: 1988-1989 through 2016-2017: Grades 9-12*

	Black		White		Asian		Hispanic		Native American		Multiracial		Systemwide	
	Percent	Number	Percent	Number	Percent	Number	Percent	Number	Percent	Number	Percent	Number	Percent	Number
2016-2017##	4.1%	[285/6987]	2.5%	[53/2095]	0.7%	[12/1723]	4.2%	[302/7201]	10.2%	[6/59]	2.0%	[2/101]	3.6%	[660/18166]
2015-2016##	4.9%	[357/7243]	3.8%	[86/2258]	1.2%	[21/1773]	5.0%	[359/7139]	4.1%	[3/73]	4.6%	[4/87]	4.5%	[830/18573]
2014-2015##	4.8%	[365/7554]	3.8%	[87/2302]	1.1%	[19/1759]	5.0%	[335/6644]	2.4%	[2/82]	4.7%	[4/85]	4.4%	[812/18426]
2013-2014##	3.7%	[275/7495]	2.9%	[69/2357]	1.4%	[24/1768]	5.1%	[322/6360]	0.0%	[0/56]	4.0%	[11/277]	3.8%	[701/18313]
2012-2013##	4.5%	[355/7826]	3.8%	[87/2313]	2.2%	[40/1815]	5.2%	[319/6127]	11.3%	[6/53]	7.5%	[21/280]	4.5%	[828/18414]
2011-2012##	6.9%	[573/8261]	5.2%	[123/2369]	3.0%	[56/1846]	7.2%	[442/6101]	8.2%	[5/61]	7.2%	[20/277]	6.4%	[1219/18915]
2010-2011##	6.2%	[478/7757]	4.2%	[101/2408]	1.9%	[34/1827]	7.5%	[531/7087]	7.3%	[4/55]	11.0%	[17/155]	6.0%	[1165/19289]
2009-2010#	6.1%	[490/8026]	3.4%	[84/2505]	2.0%	[36/1828]	7.0%	[484/6884]	5.2%	[3/58]	11.2%	[19/169]	5.7%	[1116/19470]
2008-2009#	6.9%	[574/8315]	4.1%	[109/2654]	2.3%	[41/1808]	7.8%	[520/6628]	9.9%	[7/71]	8.2%	[13/159]	6.4%	[1264/19635]
2007-2008#	7.0%	[608/8668]	5.4%	[150/2790]	2.4%	[44/1799]	9.6%	[626/6552]	10.3%	[7/68]	8.8%	[12/137]	7.2%	[1447/20014]
2006-2007#	8.0%	[727/9075]	6.1%	[171/2825]	3.2%	[59/1838]	10.0%	[642/6427]	4.1%	[3/73]	8.1%	[8/99]	7.9%	[1610/20337]
2005-2006****	10.0%	[965/9648]	7.8%	[234/3003]	3.0%	[55/1821]	11.0%	[670/6081]	10.1%	[7/69]	9.3%	[5/54]	9.4%	[1936/20676]
2004-2005****	9.1%	[887/9789]	7.5%	[226/3029]	3.8%	[69/1806]	9.2%	[510/5551]	8.1%	[6/74]	--	[1/5]	8.4%	[1699/20254]
2003-2004***	9.5%	[932/9845]	6.5%	[197/3036]	4.0%	[75/1864]	8.9%	[463/5201]	9.7%	[7/72]	-	-	8.4%	[1674/20018]
2002-2003***	8.8%	[872/9932]	6.7%	[203/3033]	4.4%	[82/1855]	8.5%	[404/4774]	11.4%	[8/70]	-	-	8.0%	[1569/19664]
2001-2002***	7.6%	[756/9923]	6.0%	[185/3065]	3.8%	[73/1924]	8.5%	[395/4629]	9.1%	[7/77]	-	-	7.2%	[1416/19618]
2000-2001***	8.6%	[824/9625]	7.4%	[225/3059]	3.8%	[71/1883]	10.6%	[469/4416]	7.2%	[5/64]	-	-	8.4%	[1594/19052]
1999-2000***	8.7%	[839/9624]	7.1%	[221/3103]	3.9%	[72/1862]	10.3%	[451/4394]	8.2%	[5/61]	-	-	8.3%	[1588/19044]
1998-1999***	9.6%	[899/9337]	8.1%	[254/3153]	5.0%	[92/1840]	11.6%	[498/4288]	10.9%	[6/55]	-	-	9.4%	[1749/18673]
1997-1998***	8.6%	[781/9088]	6.3%	[194/3094]	4.3%	[76/1769]	9.9%	[416/4188]	13.5%	[7/52]	-	-	8.1%	[1474/18191]
1996-1997***	7.7%	[683/8890]	7.3%	[227/3096]	6.3%	[113/1794]	10.2%	[421/4140]	8.2%	[4/49]	-	-	8.1%	[1448/17969]
1995-1996***	7.5%	[649/8626]	5.9%	[182/3102]	3.5%	[62/1796]	8.3%	[325/3925]	13.0%	[7/54]	-	-	7.0%	[1225/17505]
1994-1995**	9.7%	[822/8501]	7.2%	[220/3055]	5.4%	[99/1837]	10.4%	[393/3773]	7.0%	[3/43]	-	-	8.9%	[1537/17209]
1993-1994**	8.1%	[682/8412]	8.6%	[274/3192]	4.3%	[81/1880]	10.3%	[382/3697]	22.4%	[11/49]	-	-	8.3%	[1430/17230]
1992-1993**	9.0%	[745/8319]	8.5%	[284/3328]	3.4%	[65/1888]	10.6%	[379/3567]	21.4%	[12/56]	-	-	8.7%	[1485/17158]
1991-1992**	9.5%	[787/8323]	8.5%	[281/3313]	7.4%	[140/1898]	13.1%	[451/3448]	11.8%	[6/51]	-	-	9.8%	[1655/17033]
1990-1991**	10.3%	[848/8199]	7.6%	[251/3292]	4.8%	[88/1816]	13.5%	[432/3211]	10.0%	[6/60]	-	-	9.8%	[1625/16578]
1989-1990**	10.3%	[833/8118]	9.2%	[319/3485]	5.6%	[98/1753]	13.8%	[409/2971]	15.3%	[9/59]	-	-	10.2%	[1668/16386]
1988-1989	11.2%	[929/8330]	10.7%	[406/3799]	4.7%	[76/1628]	14.7%	[412/2808]	10.0%	[7/70]	-	-	11.0%	[1830/16635]

* Transfers from BPS are excluded from these analyses. Dropout rates, number of dropouts, and total populations are shown for each group. Please contact Office of Data and Accountability for data prior to SY1986-1987.

** New methods of counting and reporting dropouts were introduced in 1991-1992 to conform to new guidelines from the Massachusetts Department of Education (MA DOE) and the National Center for Educational Statistics. In order to present consistent historical data, the dropout data were recalculated back to 1989-1990 according to the new methods. The impact of the changes was relatively small (less than one percentage point), but the change does mean that the data for years before 1989-1990 are not directly comparable with the data from more recent years. Note: Effective in 1993-1994, the discharge code '28' ("Special Services", such as commitment to DYS with participation in an approved educational program) is no longer considered a dropout discharge code.

*** For annual rate data from 1995-1996 on, BPS accounts for "returned dropouts" who re-enroll by the following October 1 or process a request to transfer out of the system. 1995-1996 and later data are therefore not directly comparable with data from earlier years.

**** Beginning from 2004-05, students who turn age of 22 are counted as "Other Loss" rather than dropouts. Also, as a result of the revised federal government's reporting categories on student race codes, "Multiracial" category is added. "Multiracial" refers to any student with multiple non-Hispanic race/ethnic codes. Dropout rate is not reported if a student group has fewer than 10 students.

Beginning with SY2006-07, death and expulsion are excluded from the population. Also, BPS Student Discharge Codes have been changed to align with the enrollment status codes used by the MA DESE's SIMS. Hence, caution should be made when comparing data from 2006-07 and later with data from earlier years.

Beginning with SY2010-11, BPS dropouts who were found enrolled in another district or Charter school based on the statewide October 1 SIMS for the subsequent school year are counted as returned dropouts.

Boston Public Schools

Dropout by Racial/Ethnic Group for 9th Grade Cohorts: 1983/87 through 2012/16

	Black		White		Asian		Hispanic		Native American		Multiracial		Systemwide	
	Percent	Number	Percent	Number	Percent	Number	Percent	Number	Percent	Number	Percent	Number	Percent	Number
2012/16***	13.6%	[204/1505]	8.5%	[44/518]	2.7%	[11/410]	15.1%	[203/1342]	**	[1/9]	8.8%	[5/57]	12.2%	[468/3841]
2011/15***	13.3%	[193/1451]	11.8%	[58/493]	4.0%	[16/398]	16.6%	[196/1180]	**	[1/14]	18.2%	[10/55]	13.2%	[474/3591]
2010/14***	14.6%	[215/1470]	10.0%	[49/488]	5.7%	[22/388]	20.6%	[288/1396]	**	[1/9]	**	[5/24]	15.4%	[580/3775]
2009/13***	15.9%	[252/1582]	11.4%	[56/492]	9.0%	[38/420]	22.8%	[310/1360]	**	[1/11]	**	[11/32]	17.1%	[668/3897]
2008/12***	19.5%	[321/1647]	14.2%	[80/563]	9.5%	[38/402]	23.1%	[307/1327]	**	[7/19]	**	[7/31]	19.1%	[760/3989]
2007/11***	21.6%	[365/1688]	13.8%	[82/594]	7.4%	[30/405]	23.0%	[310/1349]	**	[4/15]	**	[10/37]	19.6%	[801/4088]
2006/10***	21.4%	[384/1796]	11.7%	[66/566]	6.9%	[28/407]	25.2%	[344/1367]	**	[3/9]	**	[10/30]	20.0%	[835/4175]
2005/09***	20.3%	[381/1874]	15.1%	[96/635]	8.2%	[34/415]	27.3%	[370/1356]	**	[4/15]	**	[6/14]	20.7%	[891/4309]
2004/08***	24.1%	[472/1959]	19.9%	[137/687]	11.8%	[47/398]	31.2%	[404/1295]	**	[2/14]			24.4%	[1062/4353]
2003/07***	27.9%	[561/2011]	21.5%	[145/673]	9.9%	[42/426]	29.8%	[365/1226]	**	[6/16]			25.7%	[1119/4352]
2002/06***	24.9%	[519/2087]	17.6%	[117/665]	7.3%	[28/384]	31.0%	[330/1063]	**	[3/12]			23.7%	[997/4211]
2001/05***	26.1%	[540/2067]	21.0%	[140/666]	9.5%	[39/409]	28.2%	[291/1031]	**	[3/20]			24.2%	[1013/4193]
2000/04***	23.8%	[459/1932]	17.6%	[114/646]	7.6%	[29/380]	25.0%	[245/979]	**	[6/15]			21.6%	[853/3952]
1999/03*	20.7%	[422/2036]	19.9%	[141/707]	10.7%	[42/394]	26.9%	[256/953]	**	[5/17]			21.1%	[866/4107]
1998/02*	23.3%	[451/1939]	20.9%	[139/665]	8.0%	[32/402]	28.4%	[260/914]	**	[3/13]			22.5%	[885/3933]
1997/01*	24.1%	[456/1889]	18.3%	[121/662]	10.7%	[40/374]	29.4%	[266/906]	**	[4/12]			23.1%	[887/3843]
1996/00*	25.2%	[460/1822]	22.2%	[142/641]	12.3%	[43/350]	33.4%	[303/907]	**	[4/9]			25.5%	[952/3729]
1995/99*	27.3%	[498/1821]	21.6%	[148/686]	14.6%	[55/378]	31.3%	[268/855]	**	[4/13]			25.9%	[973/3753]
1994/98*	23.9%	[417/1744]	21.0%	[139/661]	9.2%	[31/338]	29.1%	[239/821]	**	[3/9]			23.2%	[829/3573]
1993/97*	27.3%	[458/1678]	24.1%	[142/588]	12.0%	[39/324]	32.7%	[242/471]	**	[2/9]			26.4%	[883/3340]
1992/96*	25.9%	[415/1602]	20.8%	[144/692]	11.5%	[39/338]	25.7%	[189/736]	**	[6/14]			23.4%	[793/3382]
1991/95*	26.2%	[447/1703]	25.4%	[178/702]	12.3%	[41/334]	37.3%	[269/721]	**	[4/11]			27.1%	[939/3471]
1990/94*	26.6%	[422/1585]	27.2%	[182/670]	13.7%	[39/285]	33.8%	[230/680]	**	[7/12]			27.2%	[880/3232]
1989/93*	25.6%	[408/1593]	25.2%	[174/691]	13.3%	[44/332]	38.8%	[264/680]	**	[6/11]			27.1%	[896/3307]
1988/92*	28.9%	[490/1698]	27.7%	[220/794]	9.9%	[34/343]	36.4%	[220/604]	**	[8/15]			28.1%	[972/3454]
1987/91*	31.0%	[515/1663]	29.0%	[238/822]	15.2%	[53/348]	40.5%	[244/602]	**	[9/19]			30.7%	[1059/3454]
1986/90*	33.5%	[608/1814]	31.3%	[287/916]	17.4%	[58/333]	39.9%	[252/631]	**	[8/15]			32.7%	[1213/3709]
1985/89*	31.6%	[577/1825]	33.3%	[337/1013]	17.8%	[53/297]	44.2%	[275/622]	**	[4/14]			33.0%	[1246/3771]
1984/88*	35.6%	[699/1964]	37.9%	[447/1180]	20.7%	[63/305]	48.5%	[311/641]	**	[9/18]			37.2%	[1529/4108]
1983/87*	37.0%	[719/1942]	40.8%	[468/1147]	22.7%	[68/299]	53.8%	[314/584]	**	[9/16]			39.6%	[1578/3988]

* The beginning (9th grade) year (for September) is shown along with the expected year of graduation for the cohort. Dropout rates, number of dropouts, and total populations are shown for each group.

** The numbers of Native Americans and Multiracial are too small to permit reliable comparison of percentages.

*** From 2004-05 and onward, students who turned 22 and with a discharge code of dropout are counted as "Other Loss" rather than dropouts. Also, as a result of the revised federal government's reporting categories on student race codes a new, "Multiracial" category, is added. "Multiracial" refers to any student with multiple non-Hispanic race/ethnic codes. Since the cohort dropout rate is reported by 9th grade race/ethnicity code, the "Multiracial" category was not used before SY2004-05.

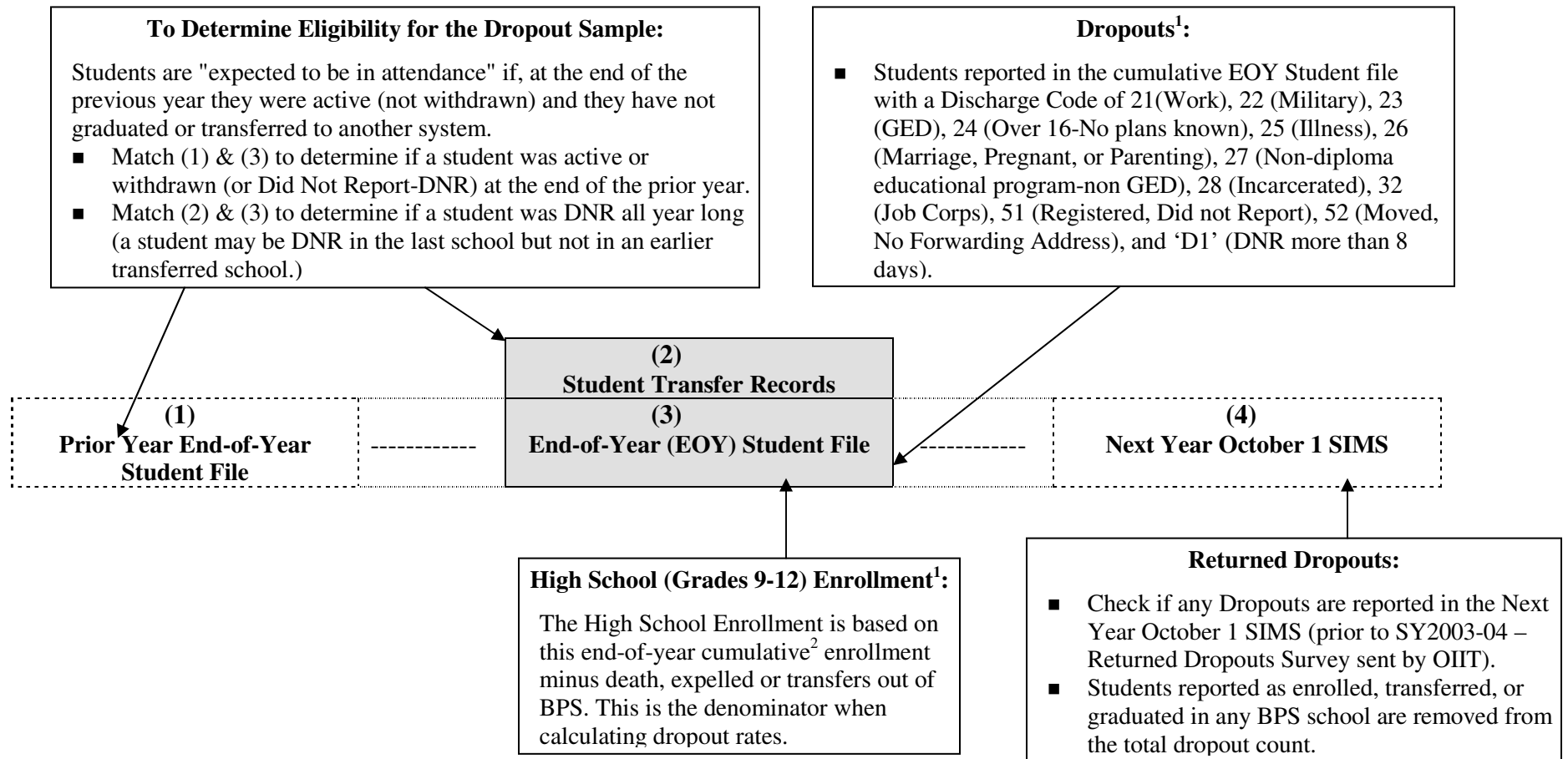
Note: In 1991-1992 and again in 1995-1996 there were changes in the procedures for counting dropouts which were introduced to conform to guidelines from the Massachusetts Department of Elementary and Secondary Education and the National Center for Educational Statistics. Because of the specifics of how cohorts are defined, these changes had a very small impact on cohort dropout rates. For practical purposes, the data across all years are essentially comparable.

Boston Public Schools

Understanding Annual High School (Grades 9-12) Dropout Calculations

The dropout rate for any given year is impacted by four different student datasets (boxes 1 through 4 below). The picture below illustrates the process of calculating the dropout rate for any given school year (in the gray box).

The **final dropout rate** = [All Dropouts – Returned Dropouts] / [Cumulative High School Enrollment – (Transfers out/Expelled/Death)]



¹ Students newly assigned to BPS who never attend are not counted as dropouts and are not included among enrolled students.

² All students who were assigned at any time during the school year.