



BPS PERFORMANCE METER UPDATE

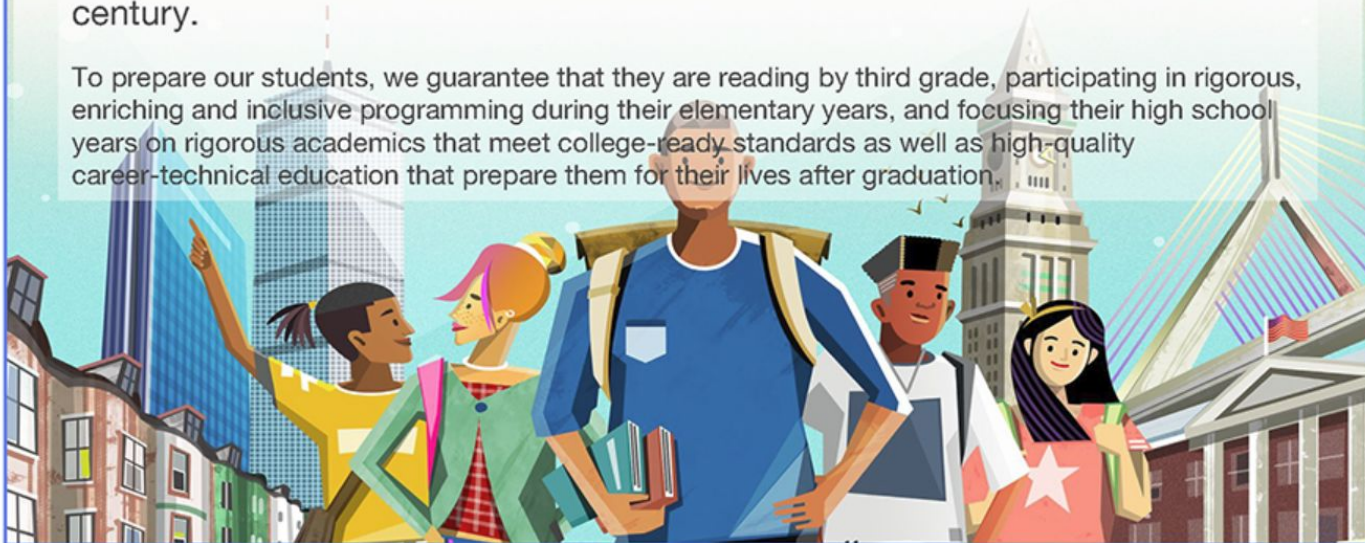
Jacob Stern
Office of Data & Accountability

May 9, 2018

*North star***Our graduates are college, career, and life ready**

BPS students are the citizens, leaders, scholars, entrepreneurs, advocates, and innovators of tomorrow. As a city and a district, we must ensure that 100% of students are prepared for college, career, and life in the 21st century.

To prepare our students, we guarantee that they are reading by third grade, participating in rigorous, enriching and inclusive programming during their elementary years, and focusing their high school years on rigorous academics that meet college-ready standards as well as high-quality career-technical education that prepare them for their lives after graduation.



A Performance Meter in Boston Public Schools

A Set of Core Metrics for the BPS Community

- Public and Transparent
- Focused on Achievement Gaps
- Aligned with Research about Critical Junctures for BPS Students

***Purpose:** Setting measurable ambitious goals to drive district performance and close achievement gaps.*

Context: Other Data Tools & Reports

Summative Accountability

- MA DESE Accountability
- BPS School Quality Framework

Progress Monitoring

- BPS Data Warehouse
- Illuminate - Measured Progress
- Aspen - Student Info System

Initial Feedback

Meetings with BPS Stakeholders

- ELL Task Force
- SpedPac
- Principal Cabinet
- School Quality Working Group II
- BPS Central Office Teams
- BSAC
- Citywide Parent Council
- Opportunity & Achievement Gap Task Force
- Dismantling the School To Prison Pipeline Working Group
- BTU - PLAB
- DELAC

Opportunity and Achievement Gap Task Force: “What’s measured is what matters”

CPC Parent: “Do not introduce new tests, just make the information you do have more transparent”

BSAC Student: “Be sure to make the language clear so students and parents can understand it.”

Metrics

- Kindergarten - Early Literacy
 - Third grade - ELA
 - Fifth grade - Science
 - Eighth grade - Math
 - 10th graders Meeting the Competency Determination
 - 4-Year Cohort Graduation Rate
 - Students Graduating High School College, Career, and Life Ready
 - Post-Secondary Completion Rates (Bachelors/Associates degrees, or Industry recognized certificates)
-
- Teacher Diversity
 - Family Engagement
 - English Learner Progress
 - Students with Disabilities in Inclusive Settings
 - Students with 94% Attendance
 - Suspension Rate

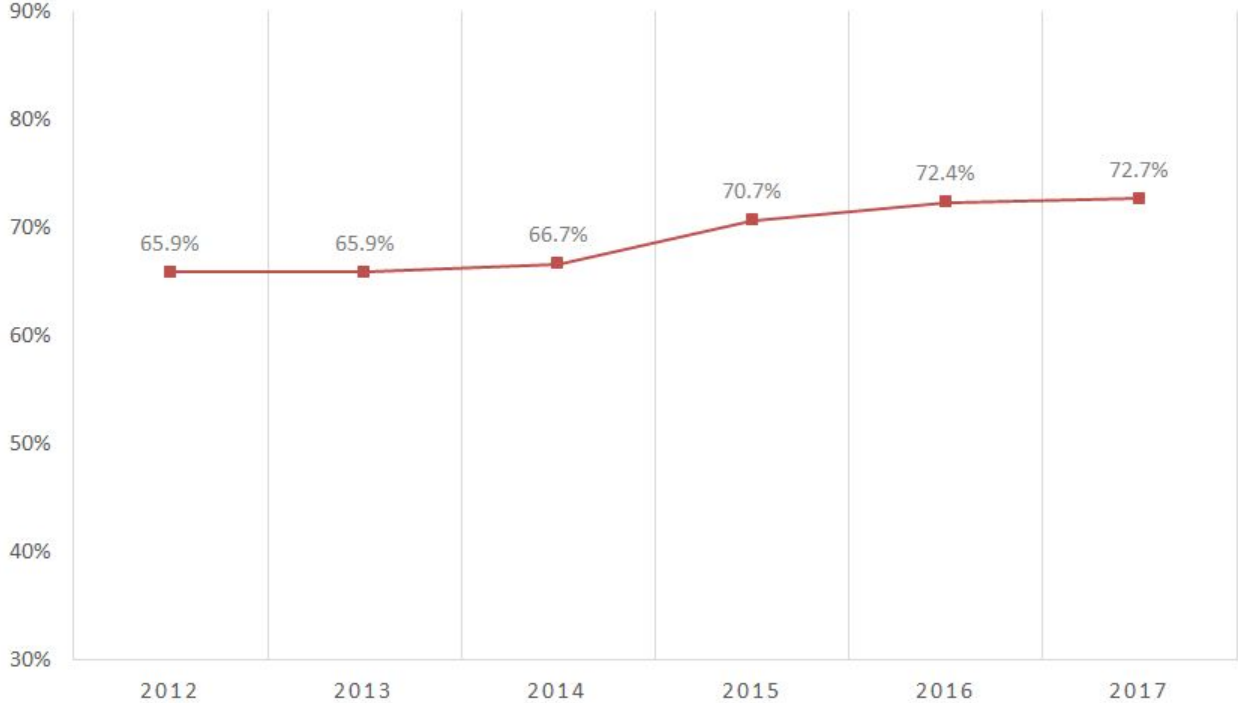
Massachusetts Large District Comparison

	Number of Students		3rd Grade ELA	5th Grade Science	8th Grade Math		4-Year Grad Rate	Suspension Rate	94% * Attendance
Boston	57,462		29%	19%	30%		73%	3.8%	55%
Springfield	27,827		29%	30%	18%		77%	7.6%	54%
Worcester	27,485		31%	32%	25%		83%	4.6%	64%
Brockton	18,040		23%	21%	21%		78%	6.5%	59%
Lynn	16,380		30%	42%	34%		74%	6.8%	61%
Lowell	15,324		44%	21%	34%		82%	5.8%	63%
Lawrence	15,410		26%	24%	36%		72%	4.7%	58%
Next 6 Largest	120,466		30%	29%	27%		78%	6%	60%
State	980,433		47%	46%	48%		89%	2.8%	67%

* Absent 10 or fewer days

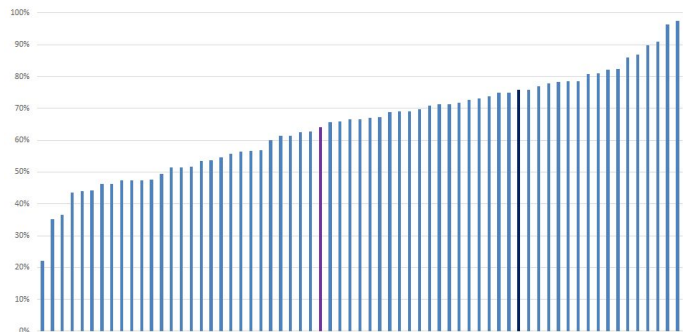
Historic Trend Data

4 YEAR GRADUATION RATE

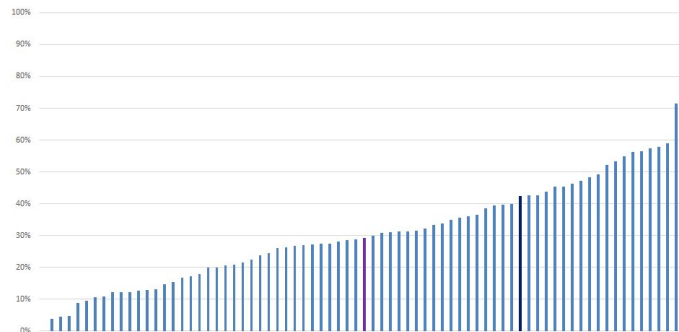


Distribution of Performance within BPS

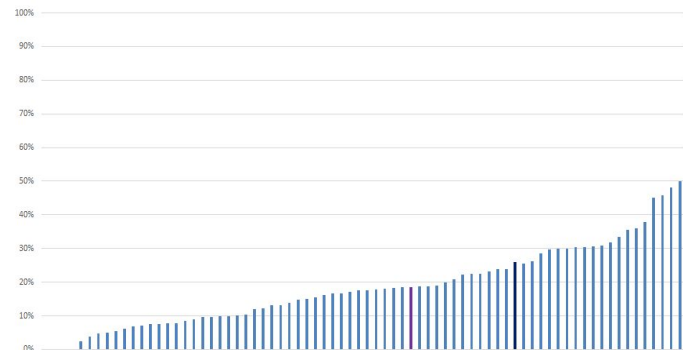
2017 K2 DIBELS



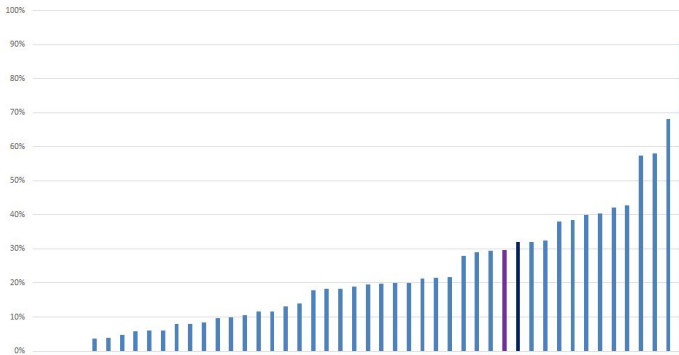
2017 3rd Grade ELA



2017 5th Grade Science



2017 8th Grade Math



■ BPS Average

■ 75th Percentile

Kindergarten - Postsecondary Trajectory

	Targets						
	BPS 2017		2017-18	2018-19	2019-20	2020-21	2021-22
Kindergarten DIBELS	64%		65%	66%	68%	70%	72%
3rd Grade ELA	29%		30%	32%	33%	35%	37%
5th Grade Science	19%		20%	22%	24%	27%	30%
8th Grade Math	30%		30%	32%	33%	35%	37%
10th Grade Competency Determination	57%		58%	59%	60%	62%	64%
Graduation Rate	73%		74%	75%	76%	78%	80%
CCLR Graduates	Data is currently being calculated for release in June						
Post-Secondary Completion	51%		52%	52%	53%	54%	56%

Supporting Measures

		Targets					
	BPS 2017		2017-18	2018-19	2019-20	2020-21	2021-22
Suspension Rate	4%		3%	3%	3%	2%	2%
94% Attendance	52%		53%	55%	56%	58%	61%
English Learner Progression	28%		29%	30%	32%	34%	37%
Students With Disabilities in Inclusive Settings	61%		62%	64%	66%	68%	70%
Teacher Diversity	38%		39%	40%	41%	42%	44%
Family Engagement	66%		67%	69%	71%	73%	76%

Web-based Platform

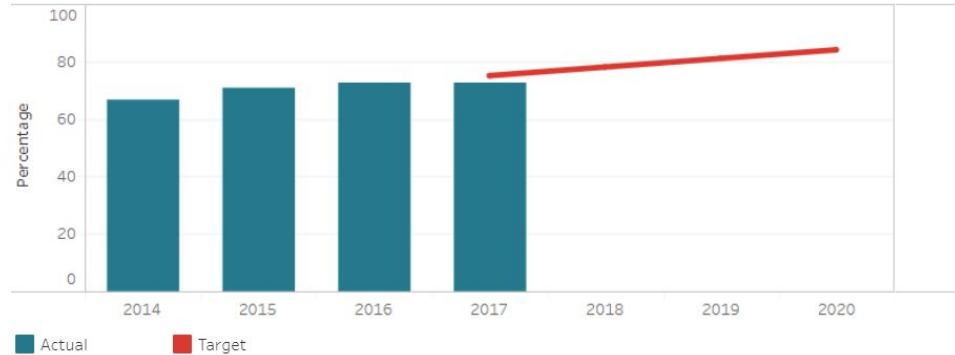
- The Performance Meter will be housed on a dynamic web-based platform
- It will provide a high level view of all 14 metrics, whether we have reached our targets, and highlight achievement gaps
- Each [metric](#) can be drilled into to see historical data & future targets
- The Performance Meter will include the ability to view all metrics disaggregated by subgroup (where possible)

Four Year Cohort Graduation Rate

The percentage of students who graduate with a regular high school diploma within 4 years.

How are all students performing?

The graph to the right shows the district performance for all students in the blue bars over the last four years. The red line indicates the targets the district has set for this metric for the next three years.



Where does the district have achievement gaps?

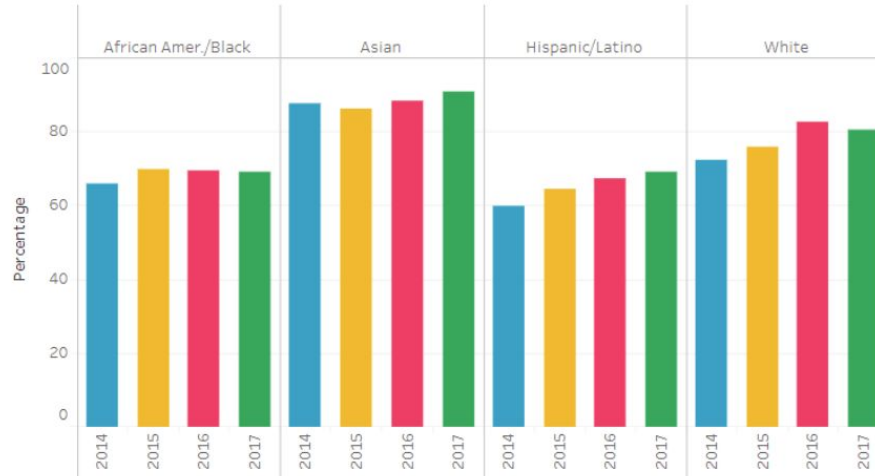
This graph shows historical performance by subgroups, showing achievement gaps that have persisted over the years. Choose the subgroup type using the dropdown below.

Subgroup type

Race/Ethnicity

Year

- 2014
- 2015
- 2016
- 2017



Moving Forward

- Publication of the Performance Meter on the website
 - High level view of all metrics and performance against targets
 - Metric can be drilled into to see historical data and targets.
 - Metrics will be disaggregated by subgroup (where possible).
(Targeting June 2018 for public release)
- Continued work on the Performance Meter
 - Developing Metrics
 - Utilizing Performance Meter data to drive improvement

Thank You



[Boston Public Schools](#)

2300 Washington Street, Roxbury, MA 02119 | P: 617-635-9000 | F: 617-635-9059

Appendix

Metric Definitions

Early Literacy in Kindergarten	The percentage of K2 students at benchmark or above at the end of the school year, as defined by the Dynamic Indicators of Basic Early Literacy Skills (DIBELS) assessment.
Third Grade ELA	The percentage of 3rd grade students meeting or exceeding expectations on the ELA MCAS.
Fifth Grade Science	The percentage of 5th grade students scoring proficient or advanced on the Science MCAS.
Eighth Grade Math	The percentage of 8th grade students meeting or exceeding expectations on the Math MCAS.
10th Grade Competency Determination	The percentage of 10th grade students meeting the Competency Determination Graduation Requirement on their first attempt. The Competency Determination requires students to earn a scaled score of 240 or higher on the Grade 10 ELA and Math MCAS and a scaled score of 220 or higher on one of the high school Science MCAS assessments.
4-Year Cohort Graduation Rate	The percentage of students who graduate with a regular high school diploma within 4 years.
CCLR Graduates	
Post-Secondary Completion Rates	The percentage of graduates completing a postsecondary degree (Bachelors, Associates or Industry recognized certificates) within 6 years of high school graduation, as reported by the National Student Clearinghouse.

Metric Definitions

Students with 94% Attendance or Higher	The percentage of students in grades K0-12 who have 94% attendance or higher.
Suspension Rate	The percentage of students in grades K0-12 who were suspended one or more times in a given school year.
English Learner Progression	The percentage of English Learners moving at least one ELD level at the end of the school year..
Students with Disabilities in Inclusive Settings	The percentage of students with disabilities in grades K0-12 in full or partial inclusion settings.
Teacher Diversity	
Family Engagement	The percentage of parents who agree or strongly agree with specific questions on the annual climate survey, averaged with the district parent climate survey participation rate. percentage of respondents who responded agree or strongly agree to the following four questions.