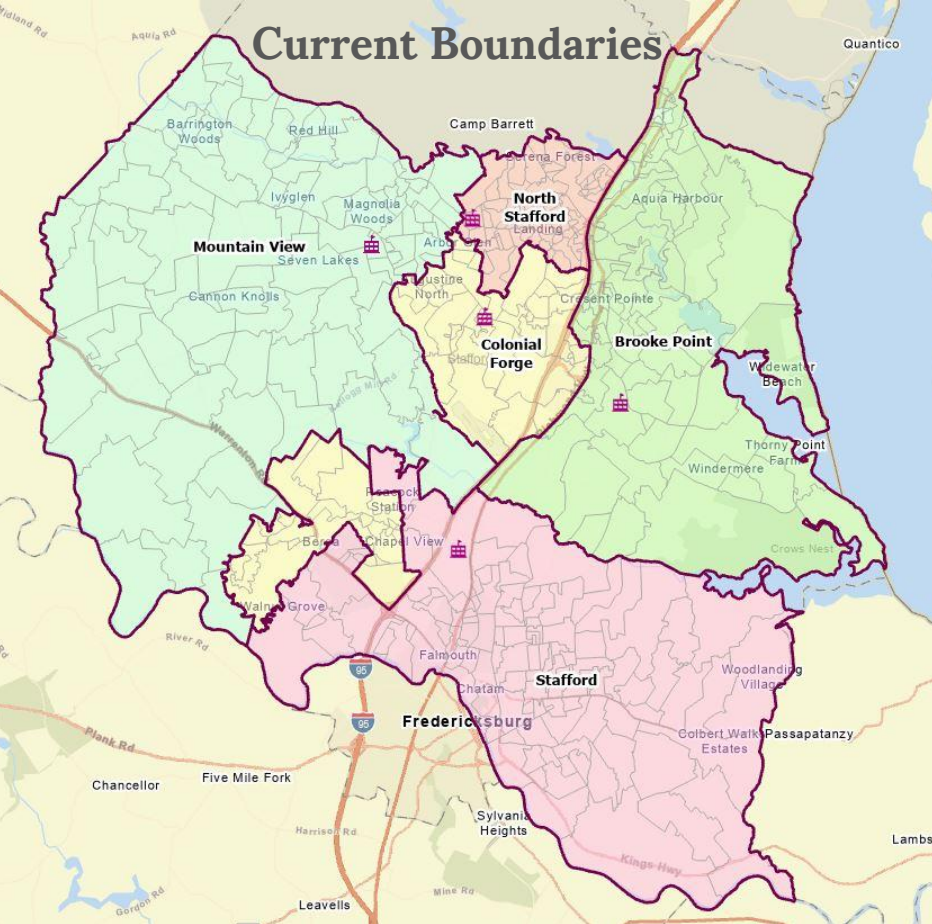
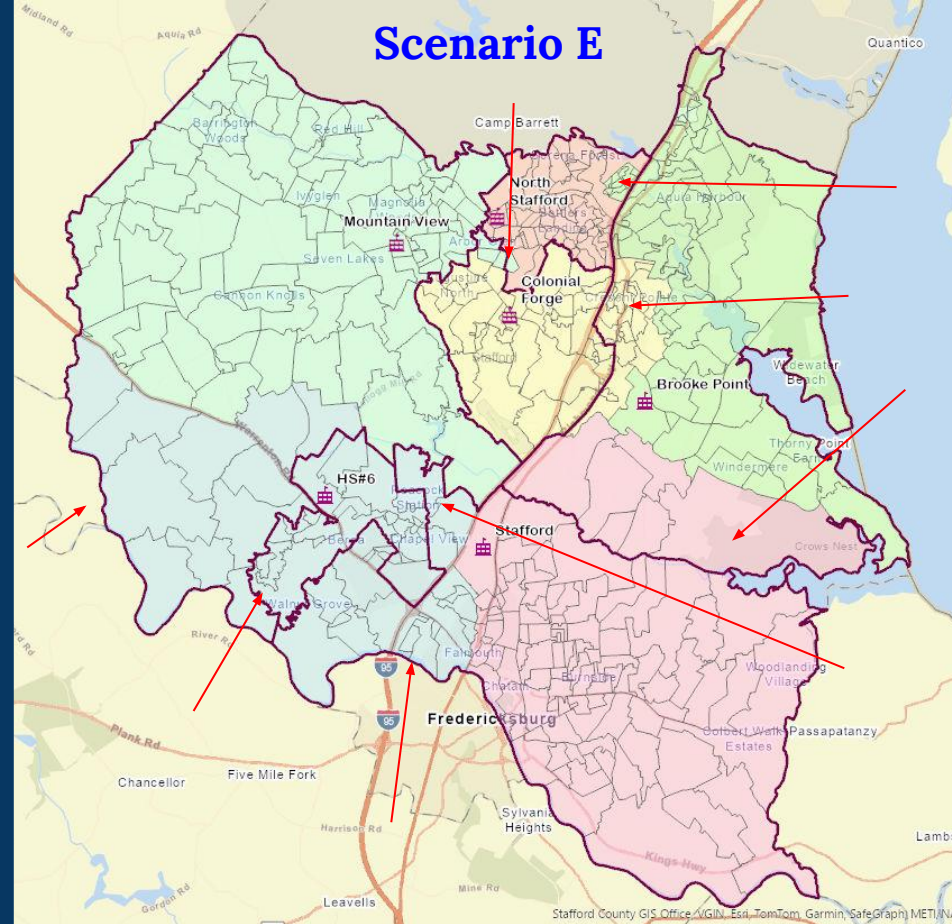


Current Boundaries



Scenario E



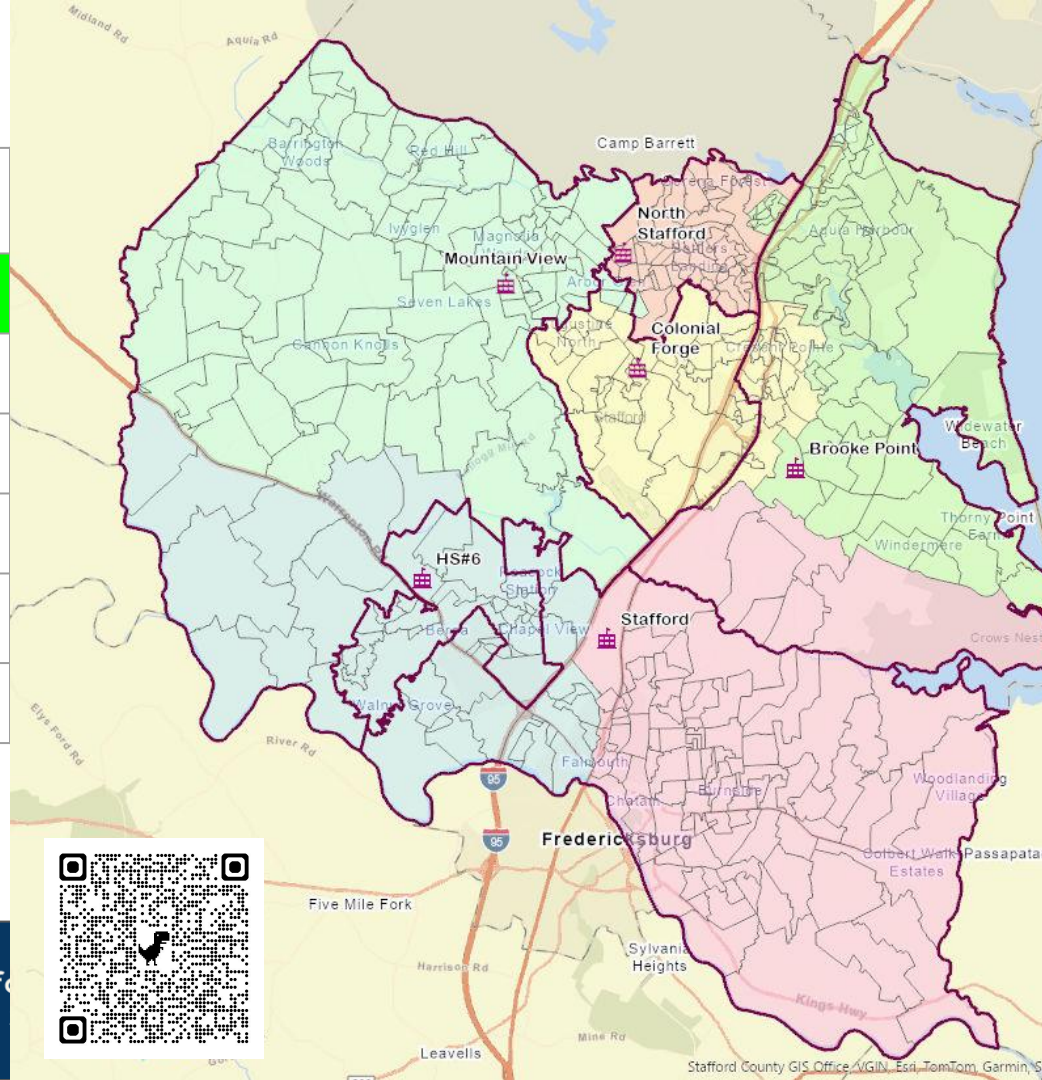
Stafford County Public Schools

Inspire | Empower | Excel

Scenario E

FRL = Free & Reduced Lunch
b/c = Boundary Change

High School (Scenario E)	Capacity Before b/c 2026	Capacity After b/c 2026	Capacity After b/c 2029	Capacity After b/c 2032	FRL% Before	FRL% After
North Stafford	105%	80%	85%	97%	57%	54%
Brooke Point	108%	88%	94%	106%	51%	54%
Colonial Forge	98%	91%	94%	103%	37%	38%
Mountain View	99%	89%	91%	92%	37%	38%
Stafford	108%	91%	93%	99%	49%	46%
HS#6	N/A	79%	89%	101%	N/A	47%



Scenario E - Reassigned Student Estimates for 2027

Scenario E	Brooke Point HS	Colonial Forge HS	HS#6	Mountain View HS	North Stafford HS	Stafford HS	Grand Total
Brooke Point HS	1,547	716				78	2341
Colonial Forge HS		1,222	847	113			2183
Mountain View HS			271	1,780			2051
North Stafford HS	376			30	1,629		2035
Stafford HS			596			1,813	2,410
Estimated Students in 2027	1,923	1,939	1,715	1,923	1,629	1,891	11,020

How to read this chart:

- Brooke Point HS is estimated to have 1,547 in-boundary students, plus 376 students from North Stafford, for a grand total of 1,923 students.
- Colonial Forge HS is estimated to have 1,222 in-boundary students, plus 716 students from Brooke Point, for a grand total of 1,939 students.
- HS#6 is estimated to receive 847 students from Colonial Forge, plus 271 students from Mountain View, plus 596 students from Stafford, for a grand total of 1,715 students.

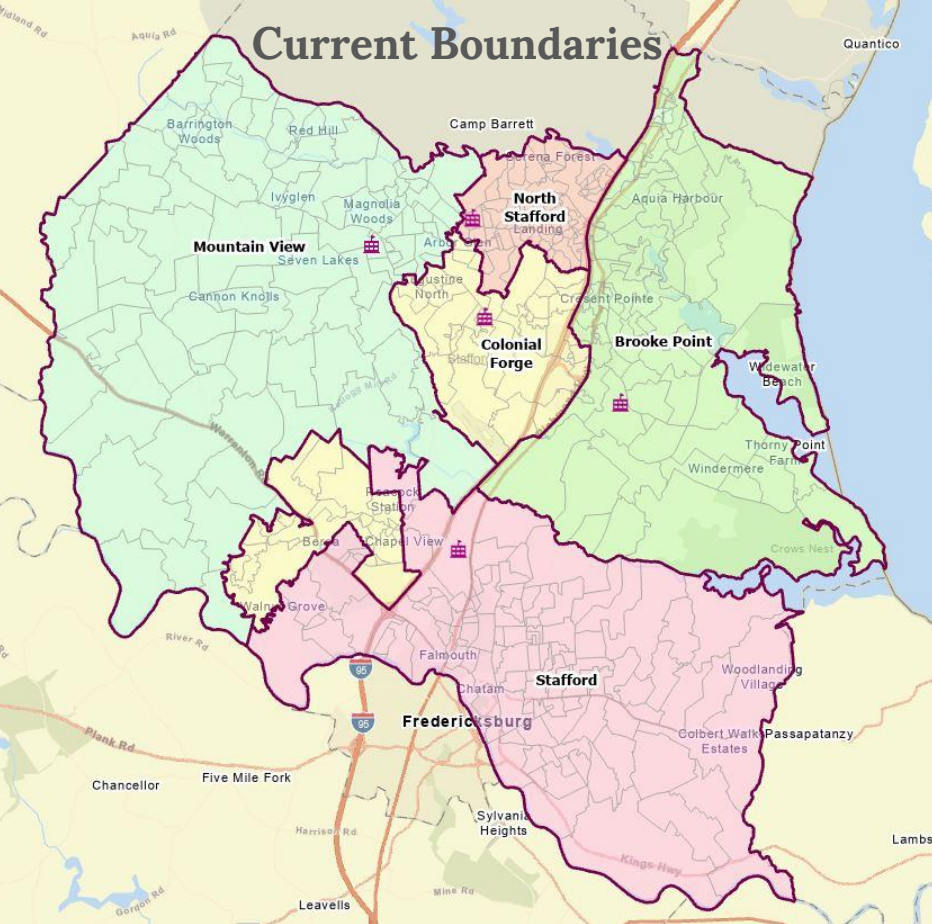
Note: Totals are subject to rounding error.



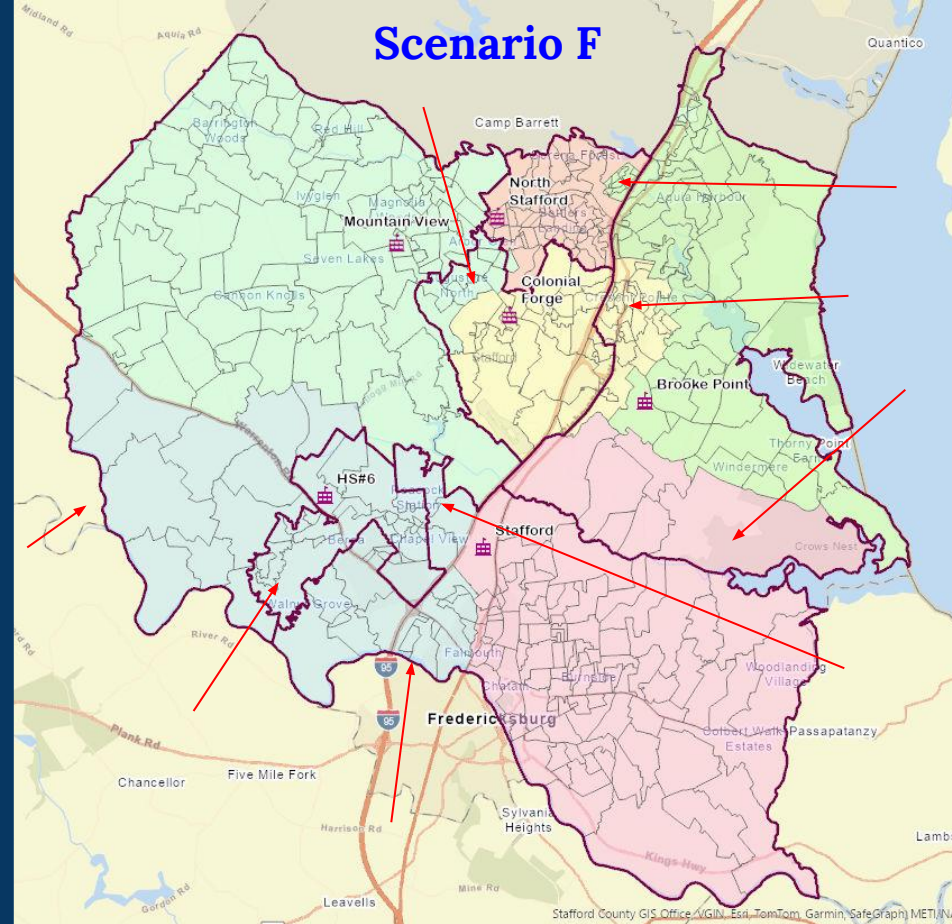
Stafford County Public Schools

Inspire | Empower | Excel

Current Boundaries



Scenario F



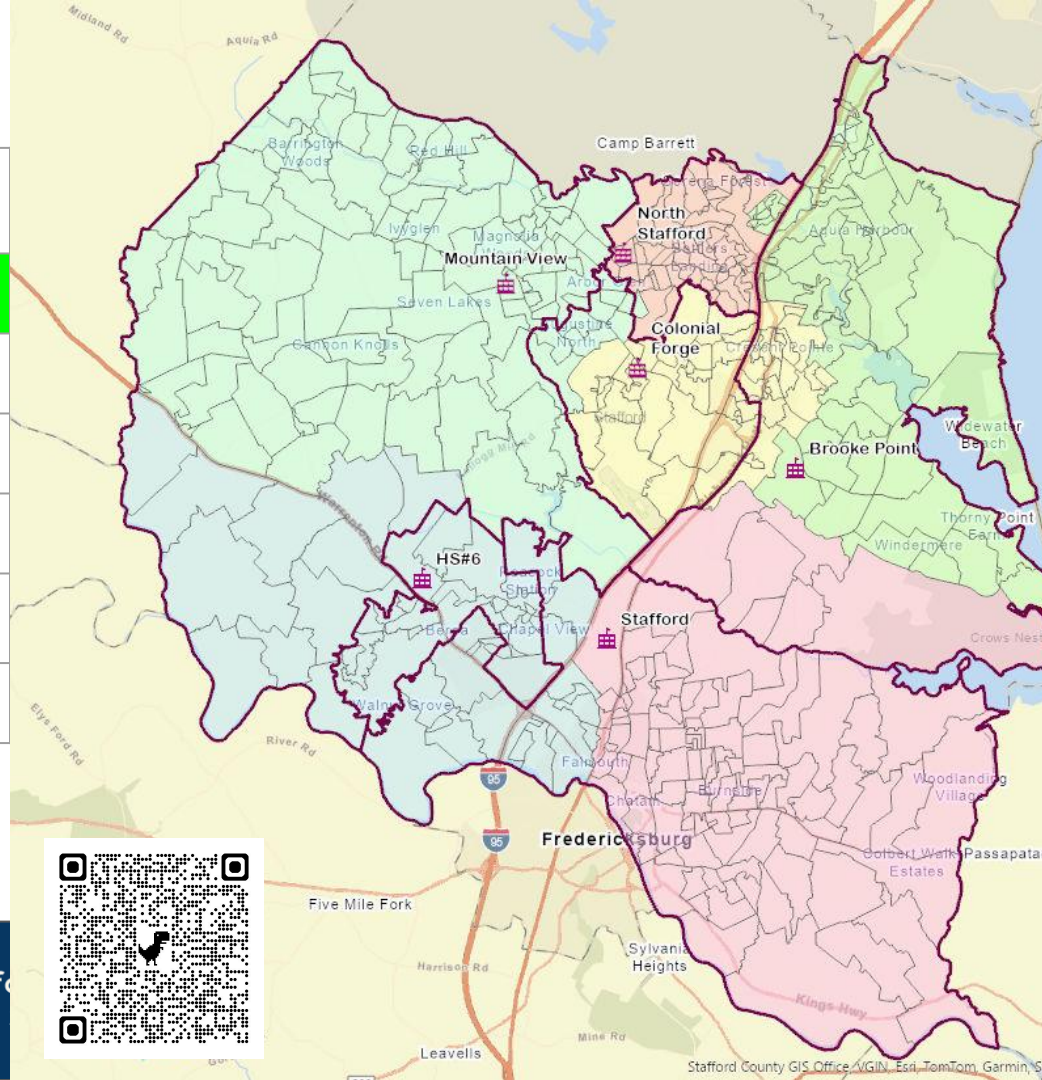
Stafford County Public Schools

Inspire | Empower | Excel

Scenario F

FRL = Free & Reduced Lunch
b/c = Boundary Change

High School (Scenario F)	Capacity Before b/c 2026	Capacity After b/c 2026	Capacity After b/c 2029	Capacity After b/c 2032	FRL% Before	FRL% After
North Stafford	105%	80%	85%	97%	57%	54%
Brooke Point	108%	85%	90%	102%	51%	54%
Colonial Forge	98%	90%	94%	104%	37%	40%
Mountain View	99%	94%	95%	96%	37%	37%
Stafford	108%	91%	93%	99%	49%	46%
HS#6	N/A	79%	89%	101%	N/A	47%



Scenario F - Reassigned Student Estimates for 2027

Scenario F	Brooke Point HS	Colonial Forge HS	HS#6	Mountain View HS	North Stafford HS	Stafford HS	Grand Total
Brooke Point HS	1,473	790				78	2,341
Colonial Forge HS		1,116	847	219			2,183
Mountain View HS			271	1,780			2,051
North Stafford HS	376			30	1,629		2,035
Stafford HS			596			1,813	2,410
Estimated Students in 2027	1,849	1,907	1,715	2,029	1,629	1,891	11,020

How to read this chart:

- Brooke Point HS is estimated to have 1,473 in-boundary students, plus 376 students from North Stafford, for a grand total of 1,849 students.
- Colonial Forge HS is estimated to have 1,116 in-boundary students, plus 790 students from Brooke Point, for a grand total of 1,907 students.
- HS#6 is estimated to receive 847 students from Colonial Forge, plus 271 students from Mountain View, plus 596 students from Stafford, for a grand total of 1,715 students.

Note: Totals are subject to rounding error.



Stafford County Public Schools

Inspire | Empower | Excel