



# Literacy in SoWashCo Schools

**Kelly Jansen, Assistant Superintendent**

**Arthur Williams, Director of Teaching and Learning - Elementary**

**Mark McIlmoyle, Director of Teaching and Learning - Secondary**

**Leah Boulos, Teaching and Learning Supervisor - K-12 Literacy**

**Tom Ross, Elementary Literacy Coach Teacher on Special Assignment (TOSA)**

**Cheryl Jogger, Community Engagement Coordinator**

# Topics

- READ Act Update
- English Language Arts Overview
- Data Review
- Supporting Literacy in the Community



The background features several overlapping circles: a large teal circle on the right, a yellow circle and a green circle overlapping at the bottom left, and a light beige circle on the far left.

# **READ Act Update**

## Professional Development Funding

A decorative graphic on the left side of the page consists of a grid of circles in various colors (teal, blue, green, yellow, and light blue) and sizes. Some circles are solid, while others are hollow. The circles are arranged in a roughly rectangular pattern, with some missing or faded, creating a modern, abstract background.

# Minnesota READ Act

## Minnesota's Plan for literacy achievement

- Minnesota Reading to Ensure Academic Development Act, known as the READ Act, was passed and signed into law by Governor Tim Walz on May 24, 2023.
- The READ Act replaces Read Well by Third Grade in Minnesota statute.
- The READ Act went into law on July 1, 2023.

# Literacy Goal

To have every child reading at or above grade level every year, beginning in kindergarten, and to support multilingual learners and students receiving special education services in achieving their individualized reading goals.



# Professional Development



## EARLY CHILDHOOD AND ELEMENTARY

CAREIALL: Center for Applied Research and Educational Improvement Advancing Language and Literacy (University of Minnesota)

## GRADES 6 THROUGH 12+

Consortium On Reaching Excellence in Education (CORE)

- Online Language and Literacy Academy (OL&LA)
- CORE's Adolescent Literacy Solutions (ALS)





## READ Act Funding

- READ Act Literacy Aid
  - New, one-time funding
  - Wide uses through READ Act statute but must be related to approved curriculum and programming.
- READ Act Teacher Compensation
  - One-time only.
  - Must be included in an approved Memorandum of Understanding (MOU)
  - Primary use will be be stipends.



**For more information about the READ Act visit**

<https://education.mn.gov/MDE/dse/READ/>





# English Language Arts (ELA) And Literacy

# English Language Arts (ELA)



All of the communication and language skills and processes people use every day to receive and send information.

The ability to use and understand language is critical to every aspect of students' lives and their future career and college readiness.

Source: <https://education.mn.gov/MDE/dse/stds/ela/>




# English Language Arts (ELA) Academic Standards



The 2020 Minnesota Academic Standards in English Language Arts were adopted in 2023 and are scheduled for full implementation in the 2025–26 school year.

The standards are organized into three strands:

1. **Reading** – Taking in information from a wide variety of sources through reading, listening and viewing.
2. **Writing** – Sharing information with a variety of audiences through writing, speaking and presenting.
3. **Listening, Speaking, Viewing and Exchanging Ideas** – Communicating and collaborating with others through speaking, listening and viewing.

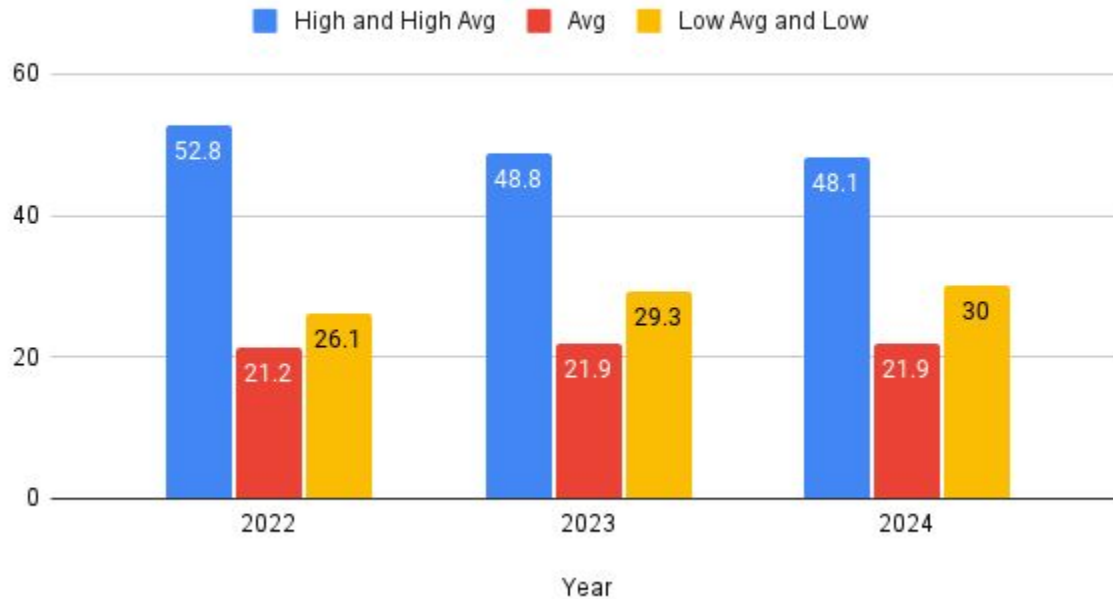
The background features several overlapping circles. A large blue circle is the central focus, containing the title. To its left is a light beige circle. Below the blue circle is a dark blue circle, and overlapping its right side is a teal circle.

# Literacy In Elementary School

# Elementary Data: Reading Measure of Academic Progress (MAP): 3rd, 4th and 5th Grade: National RIT (Rasch UNIT) Percentage Norms



## 3rd, 4th, and 5th Grade National RIT Percentage Norms



### High and High Average

- 61% +

### Average

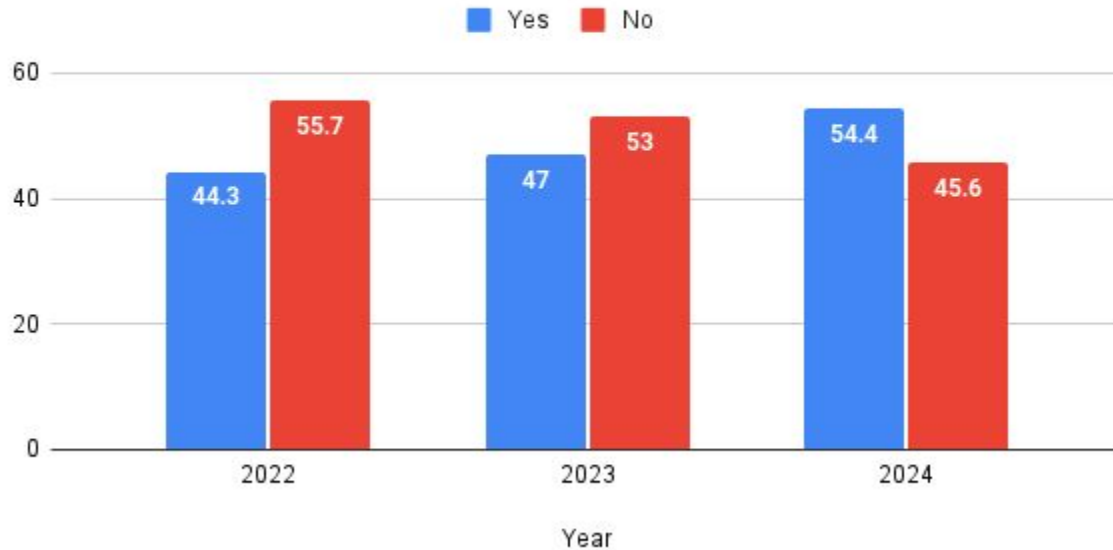
- 41%-60%

### Low Average and Low

- 0% - 40%

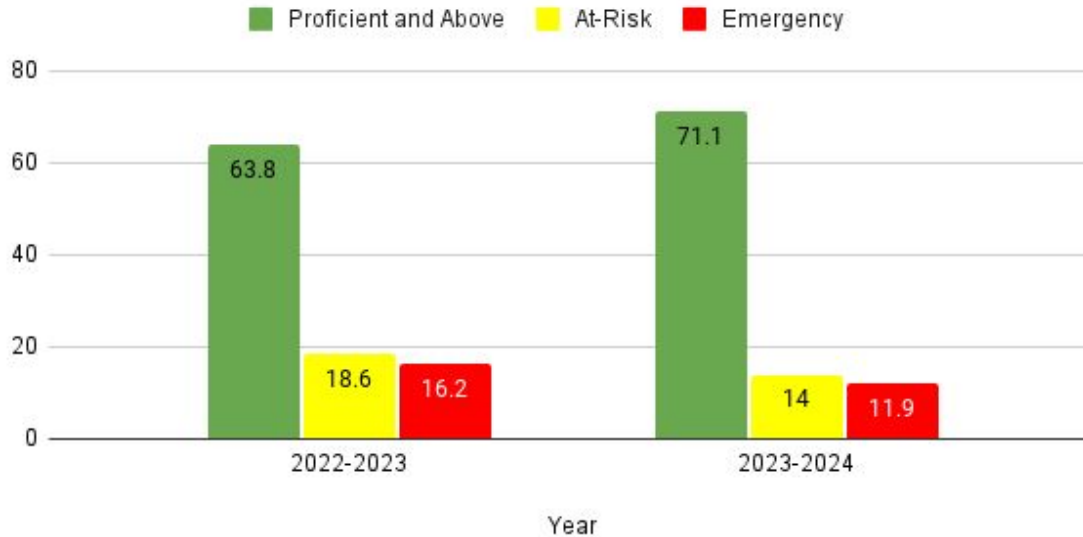
# Elementary Data: Reading Measure of Academic Progress (MAP): 3rd, 4th, and 5th grade (Fall-to-Fall Projected Growth)

## Fall-to-Fall Met Projected Growth for 3rd, 4th, and 5th Grade



# Elementary Data: Independent Reading level Assessment (IRLA)

## IRLA End of Year Data for K, 1st, 2nd, 3rd, 4th, and 5th Grade




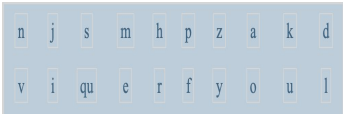
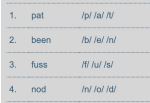

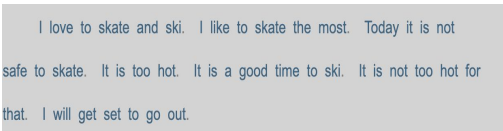
# Elementary Data: FastBridge Screener

Grade	 <b>Fall</b>	 <b>Winter</b>	 <b>Spring</b>
<b>K</b>	Letter Names Letter Sounds Word Segmenting Nonsense Words (optional)	Letter Names Letter Sounds Word Segmenting Nonsense Words	Letter Names Letter Sounds Word Segmenting Nonsense Words
<b>1</b>	Word Segmenting Nonsense Words CBMreading (optional)	Word Segmenting Nonsense Words CBMreading	Word Segmenting Nonsense Words CBMreading
<b>2 and 3</b>	CBMreading Nonsense Words (optional)	CBMreading Nonsense Words	CBMreading Nonsense Words

Screening Guidance from MDE



# Elementary Data: FastBridge Screener

Screener Name	Description	Example
Letter Names	Measures how well and how quickly students recognize uppercase and lowercase letters	
Letter Sounds	Measures how well and how quickly students say the correct sounds for lowercase letters	
Word Segmenting	Assesses how well a students breaks down a spoken word into individual sounds	
Nonsense Words	Evaluates how well students can read made-up words that follow regular English phonics rules	
CBMReading <i>CBM = Curriculum Based Measurement</i>	Screen and monitor student reading progress - teacher listens to student read a grade level passage for one-minute and records errors	

# ELA in the Classroom: Elementary

**Comprehensive literacy resource: American Reading Company**

- Components
  - Reading
  - Writing
  - Foundational skills
- Structures
  - Whole-class instruction
  - Lab time for reading and writing practice
  - Equitable conferences
  - Small-group instruction

# ELA in the Classroom: Elementary



## CAREIALL

Professional development to enhance our literacy instruction

- Module 1: Multi-tiered Systems of Support (MTSS), Assessment, and Literacy Development
- Module 2: Instructional Considerations for Literacy Educators



# What's Next Elementary?

- School Improvement Plans (SIP)
  - Grade level and department teams are using these data sources in their professional learning communities (PLCs) to make instructional decisions that meet the needs of their students.
- Classroom practice
  - Implementing strategies from CAREIALL literacy training into classroom practice.



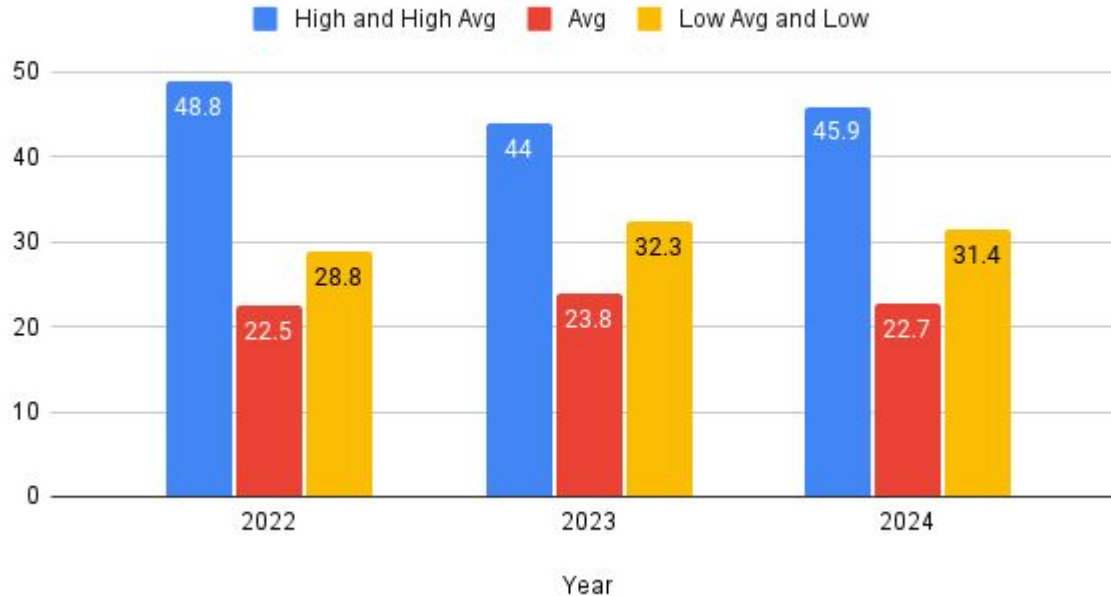
The background features several overlapping circles: a large blue circle on the right, a smaller dark blue circle on the bottom left, a teal circle overlapping the dark blue one, and a light beige circle on the left side.

# Literacy In Secondary Schools

# Secondary Data: Reading Measure of Academic Progress (MAP): 6th, 7th and 8th Grade (National RIT Percentage Norms)



## 6th, 7th, and 8th Grade National RIT Percentage Norms



### High and High Average

- 61% +

### Average

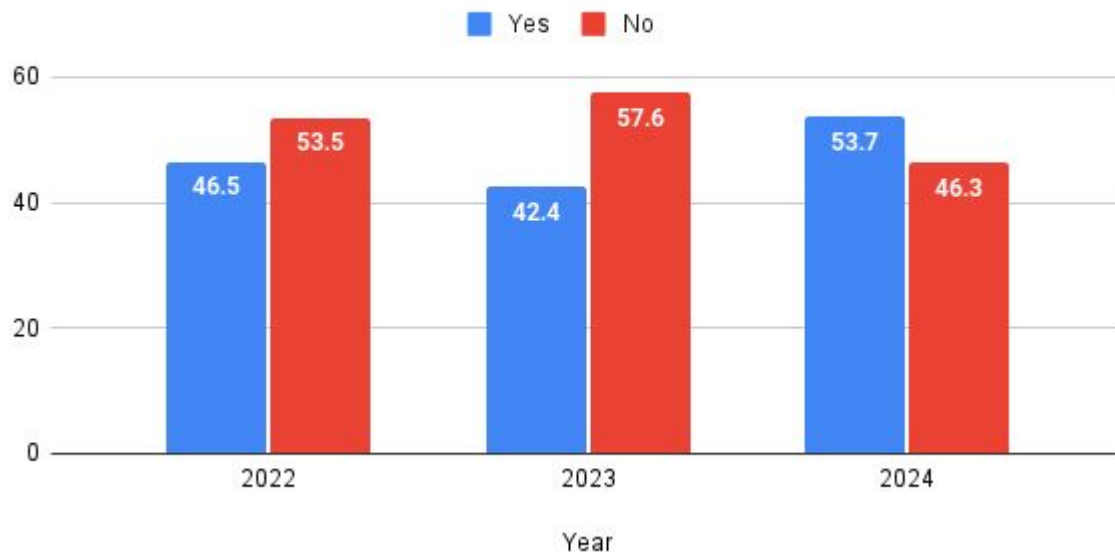
- 41%-60%

### Low Average and Low

- 0% - 40%

# Secondary Data: Reading Measure of Academic Progress (MAP): 6th, 7th, and 8th grade (Fall-to-Fall Projected Growth)

Fall-to-Fall Met Projected Growth for 6th, 7th, and 8th Grade



# ELA in the Classroom: Secondary

- Reading:
  - Instruction includes book clubs and whole-class novels
  - Texts offer multiple perspectives, including Dakota and Anishinaabe
  - Core instruction happens using grade-level texts, while also differentiating as needed
  - Independent reading time on a regular basis
- Socratic Seminars or Shared Inquiry discussions
- Writing in all four genres (Informational, Argumentative, Persuasive, Creative/Narrative):
  - Extended pieces in at least two of these genres
- Integrated grammar within writing instruction



# What's next at Secondary?

- READ Act guidance
  - Screener requirements for Secondary
  - Defining grade-level achievement
- Building a data picture for Secondary Schools
  - Assessing what data we have to build a literacy data picture for Grades 9 and above
  - The addition of:
    - Screener for grades 6-12+
    - Understanding of what we will use to measure grade-level achievement
    - Pre-college exam for Grade 8



# Next Steps

Literacy in the Community  
SoWashCo Family Academy

# Literacy in the Community



**Skoolie Bus Little Free Library Program**

**Dolly Parton Imagination Library Pilot in Newport**

**Guest Readers for "Read to Me" Kindergarteners**

**Local Libraries Supporting SoWashCo Literacy**

**AVID Middle School and Elementary Pen Pals**

**Intergenerational Reading Buddies**

**Activities for Businesses to Support Literacy**

# SoWashCo Family Academy



- Families will have two opportunities to learn more about the landscape of literacy in SoWashCo schools and how to support their students at home from 5-6 p.m. in the Board Room at the District Service Center in Cottage Grove:
  - Tuesday, Dec. 10, 2024
  - Tuesday, April 8, 2025
- Will be facilitated by the SoWashCo Teaching and Learning team:
  - Directors of Teaching and Learning - Elementary and Secondary
  - Teaching and Learning K - 12 Literacy Supervisor
  - Teaching and Learning Literacy Teacher on Special Assignment (TOSAs)
- Topics will include:
  - Tips and strategies for helping students at home
  - Science of Reading
  - Structured Literacy
  - What is the READ Act?
  - Multi-Tiered Systems of Support (MTSS)



Questions?