



# VERBUM DEI

## JESUIT HIGH SCHOOL

11100 South Central Avenue., Los Angeles, California 90059 [verbjesuit.org](http://verbjesuit.org) CEEB:051829

### ABOUT VERBUM DEI JESUIT HIGH SCHOOL

Founded in 1962 by the Archdiocese of Los Angeles and entrusted to the Fathers and Brothers of the Society of the Divine Word (SVD), Verbum Dei Jesuit High School is a member of the Cristo Rey Network comprised of 39 schools across 24 states, whose mission is to deliver a career-focused college preparatory education that integrates a rigorous academic curricula with four years of professional work experience and support to and through college. Members of the Society of Jesus (SJ) joined the staff in 2000.

### MISSION STATEMENT

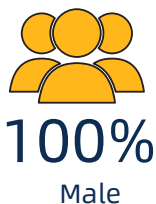
Verbum Dei Jesuit High School is a Catholic, Jesuit, Cristo Rey Network high school that offers young men from supportive families of limited resources a college prep curriculum, corporate work experience, and faith formation that prepares them to graduate from college as men-with-and-for-others who serve their communities and pursue a more just and humane world for all.

### SCHOOL COMMUNITY

Verbum Dei Jesuit High School draws students from the southern metropolitan Los Angeles area. We serve students from Watts and surrounding neighborhoods such as Long Beach, Inglewood and Downey. **100% of our students receive high school tuition assistance.**

### STUDENT POPULATION

Total HS Enrollment	300
Class of 2025 Enrollment	57
Class of 2026 Enrollment	80
Class of 2027 Enrollment	80
Class of 2028 Enrollment	83



### CORPORATE WORKSTUDY PROGRAM

Every student participates in the Corporate Work Study Program all four years of high school, working once a week at Fortune 500 company where they gain professional work experience and skills, develop a network, and practice what they are learning in the classroom, all while helping cover the cost of their education!

### EXTRA CURRICULAR ACTIVITIES

#### Athletics

- Football
- Cross Country
- Basketball
- Soccer
- Baseball
- Track & Field
- Volleyball
- Golf

#### Clubs

- Anime
- Creative Writing
- Engineering (Robotics)
- E-Sports
- Theater
- Film
- Music
- Black Student Union
- Latino Student Union
- Arrupe Service and Justice
- Intramurals
- Sports Management
- Mock Trial
- Masa
- Health & Wellness
- Yearbook

### CORPORATE PARTNERS INCLUDE:

- The Aerospace Corporation
- Raytheon Technologies
- City National Bank
- ASM Global Los Angeles Convention Center
- California Science Center
- LA County Metro
- Torrance Memorial Medical Center
- Payden & Rygel
- Latham & Watkins



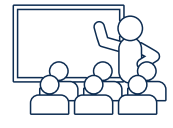
# Class of 2024 Data

## ACADEMIC PROGRAM

**Content:** The traditional Liberal Arts disciplines: English, Mathematics, History and Social Studies, Modern Language, Science, Religious Studies, Art, and Physical Education are offered at Verbum Dei Jesuit High School.

**Honors/Advanced Placement Courses:** All Verbum Dei Jesuit High School Students follow a college preparatory curriculum.

- AP English Language & Composition
- AP Micro Economics
- AP English Literature & Composition
- AP Spanish Language & Culture\*
- AP Spanish Literature & Culture
- Honors English 10, 11, 12
- Honors Spanish 1
- Honors Spanish 2
- AP World History: Modern
- AP US History
- AP US Government & Politics
- Honors World History
- Honors US History
- Honors Economics
- Honors Algebra 2
- Honors Geometry
- Honors Statistics
- Honors Biology
- Honors Chemistry
- Honors Physics



# 89

Students Enrolled in AP Courses

*Students must enroll in AP US Government & Politics to be eligible to enroll in AP Micro Economics. The most rigorous course load a senior has taken is comprised of twelve AP and honors courses.*

### Graduation Requirements:

- History/Social Science 30 credits
- English 40 credits
- Mathematics (Algebra 1 and higher) 40 credits
- Language Other than English 20 credits
- Visual & Performing Arts 10 credits
- Science 30 credits
- Health/PE 10 credits
- CWSP 40 credits
- Elective 10 credits
- Theology 40 credits
- College Access Program 10 credits
- Service Hours 100 hours

*College Access Program, yearlong class to assist all 12th grade students and their families with the college, FAFSA, and scholarships application process.*

**Grading:** GPA is calculated on a 4.0 scale, with .3 deducted for a minus and .3 added for a plus. Before the 2016-2017 school year, an A was earned with 96% or above. Beginning in the 2017-2018 school year, Verbum Dei Jesuit High School no longer recognizes D grades. Class rank was eliminated in 2000.

- A 93-100 B+ 87-89 B- 80-82 C 70-73
- A- 90-92 B 83-86 C+ 77-79 F 69 and below

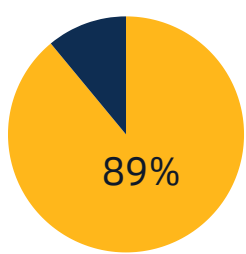
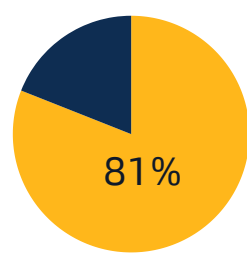
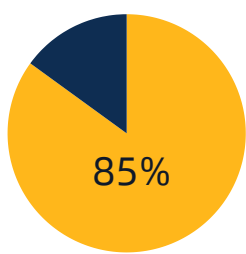
## 4 YEAR COLLEGE ACCEPTANCES

### INCLUDE:

- California State University: Los Angeles, Long Beach, Dominguez Hills, Fullerton, Northridge, Pomona, San Luis Obispo, Humboldt
- University of California: Los Angeles, Santa Barbara, Berkeley, San Diego, Riverside, Merced, Davis
- Duke University
- Santa Clara University
- University of Notre Dame
- Loyola Marymount University, Los Angeles
- St. John's University
- Morehouse College
- Marist College
- Arizona State University
- Southern Utah University
- Chapman University
- Georgetown University
- Jackson State University
- Otis College of Art and Design
- Seattle Pacific University
- University of Southern California
- Boston College

## CLASS OF 2024 DEMOGRAPHIC INFORMATION

- 1ST Generation College Bound Students
- Pell Grant Eligibility
- Awarded Cal Grant



## FALL 2024 ANTICIPATED COLLEGE ENROLLMENT

	4 Year	2 Year	Other
<b>Class of 2024</b>	94%	5%	1%