



Connecticut Association of Boards of Education

Educational Affiliate Guide

Support

Education

Advocacy

*2024
2025*

*Empowering
Education
Partnerships*

The Leading Voice for Connecticut Public Education





Inside the Guide

- 03 About CABC
- 05 CABC Board of Directors
- 07 CABC Staff
- 08 Educational Affiliate Program

CABC Journal

- 09 Advertising
- 10 Writing an Article

CABC/CAPSS Convention

- 11 Sponsorship Opportunities
- 12 Advertising Opportunities
- 12 Exhibit Hall
- 13 CABC Services
- 15 Explanation of for Fee Services
- 17 CABC Area Map



Connecticut Association of Boards of Education

To become a CABC Educational Affiliate

please go to our website at www.cabc.org and click the "About" tab.

Or visit <https://rb.gy/ozizk8>



81 Wolcott Hill Road, Wethersfield, CT 06109-1242 •
(860) 571-7446 • Fax (860) 571-7452 • www.cabe.org

On behalf of the Board of Directors and the entire Connecticut Association of Boards of Education (CABE) team, we are excited to present our Educational Affiliate Guide—a comprehensive resource detailing our association's mission, values, and the range of benefits available to CABE Educational Affiliates.

This guide offers a comprehensive overview of CABE and educational affiliate benefits aimed at fostering excellence in public education statewide. From pioneering professional development initiatives to influential policy work and dedicated advocacy efforts, our commitment remains steadfast in supporting educational leaders like you.

We appreciate the commitment to public education shared by CABE's Educational Affiliates.

As we navigate the challenges and opportunities ahead, we stand prepared to collaborate with you in advancing our shared mission of educational excellence for ALL of Connecticut's students.

CABE recognizes the value of working closely with educational affiliates committed to advancing public education.

Our effective and productive Educational Affiliate relationships:

- Bring value to CABE, its members, and Educational Affiliates
- Enable Educational Affiliates to meaningfully contribute to the work of CABE beyond financial support
- Foster collaboration and innovation through an ongoing, transparent dialogue and exchange of information

Working with CABE offers access to approximately 1,450 school board members and 166 school districts across the state, with a combined buying power of more than \$13 billion. The annual CABE/CAPSS Convention and other events are well attended by school board members, superintendents, school leaders and education professionals, offering numerous networking opportunities and advertising channels.

CABE offers several different ways to leverage our resources to achieve your goals. We can work with you to customize an opportunity that best matches your resources and objectives. We appreciate the commitment to public education shared by CABE's Educational Affiliates.

Sincerely,



Leonard Lockhart
Leonard Lockhart
President, CABE



Patrice A. McCarthy
Patrice McCarthy
Executive Director and
General Counsel, CABE

About CABE

Purpose

The Connecticut Association of Boards of Education (CABE) is a statewide non-profit organization that advocates for public schools and school board leadership in Connecticut. CABE is dedicated to strengthening public education through advocacy, education and service to our member boards of education. It's our belief that providing high-quality education for all Connecticut children begins with effective leadership. CABE exists solely to support our school boards so the future of public education continues to be a bright one.

Mission

To assist local and regional boards of education in providing high quality education for all Connecticut children through effective leadership.

Vision

CABE is passionate about strengthening public education through high-performing, transformative local school board/superintendent leadership teams that inspire success for each child.



Connecticut Association of Boards of Education
860.571.7446 • Fax 860.571.7452

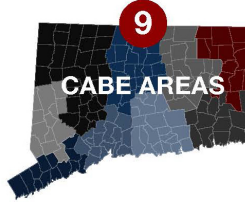


CONNECTICUT ASSOCIATION OF BOARDS OF EDUCATION

Founded in 1906



147 MEMBER SCHOOL DISTRICTS



CABE AREAS



BOARD OF EDUCATION MEMBERS SERVED BY CABE



CONNECTICUT PUBLIC SCHOOL STUDENTS

EDUCATION

PARTICIPANTS IN CABE TRAININGS SINCE 2015:



CABE/CAPSS STATE CONVENTION



ADMINISTRATIVE PROFESSIONALS

2,610

CUSTOM CABE WORKSHOPS

LEADERSHIP DEVELOPMENT SINCE 2020:



BOARD CHAIR CHECK-INS



FREE WEBINARS

ADVOCACY



BILLS ON WHICH CABE PROVIDED TESTIMONY SINCE 2021



PARTICIPANTS IN DAY ON THE HILL SINCE 2009



MEETINGS WITH CONNECTICUT CONGRESSIONAL DELEGATION IN WASHINGTON DC SINCE 2010



LEGAL INQUIRIES ANSWERED ANNUALLY



LEGISLATIVE BREAKFASTS ORGANIZED SINCE 1995

SUPPORT



POLICY INQUIRIES ANSWERED ANNUALLY



ISSUES OF POLICY HIGHLIGHTS NEWSLETTER PRODUCED SINCE 2000



POLICY MANUALS DEVELOPED FOR DISTRICTS SINCE 1995



ISSUES OF CABE JOURNAL PUBLISHED SINCE 1985

2024 CABA Board of Directors

Executive Committee



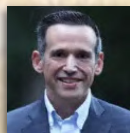
President
Leonard Lockhart
(Windsor)

C: 860-883-3344
llockhart@windsorct.org



First Vice President
Meg Scata
(Portland)

C: 860-834-6063
megscata@gmail.com



Vice President for Government Relations
Lon Seidman
(Essex)

C: 860-577-0566
lseidman@reg4.k12.ct.us



Vice President for Professional Development
Eileen Baker
(Old Saybrook)

C: 860-304-4635
ebaker@snet.net



Secretary/Treasurer
Tony Perugini
(Cheshire)

C: 203-889-7792
aperugini@cheshire.k12.ct.us



Immediate Past President
Liz Brown
(Waterbury)

C: 203-560-7028
lynnrb1935@gmail.com



Member at Large
Ethel Grant
(Naugatuck)

H: 203-723-2428
ethel.grant@naugatuck.k12.ct.us

Associate Directors



Associate
Julia Dennis
(Berlin)

H: 860-966-6038
julia.mptee@gmail.com



Associate
Ethel Grant
(Naugatuck)

H: 203-723-2428
ethel.grant@naugatuck.k12.ct.us



Associate
Jamie Barr
Shelburn
(East Lyme)

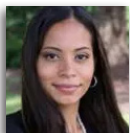
C: 860-501-2511
jaime.shelburn@elpsk12.org



Associate
Becky Tyrrell
(Plainville)

C: 860-978-2477
tyrrell@EdAdvance.org

City Representatives



Bridgeport
Christine
Baptiste-Perez

C: 475-455-1977
cbaptisteperez@bridgeportedu.net



New Haven
Yesenia Rivera

C: 203-988-0774
yesenia.rivera@new-haven.k12.ct.us



Stamford
Gabriella Koc

B: 203-977-5318
gkoc@stamfordCT.gov



Waterbury
LaToya Ireland

H: 203-592-5142
latoya.ireland@waterbury.k12.ct.us

Committee Chairs



Federal Relations Chair
Lee Goldstein
(Westport)

C: 203-561-6795
lgoldstein@westportps.org



Resolutions Chair
Laurel Steinhauser
(Portland)

H: 413-531-3908
lsteinhauser@portlandct.us



State Relations Chair
Lindsay Dahlheimer
(Region 13)

C: 617-448-4414
ldahlheimer@rsd13.org

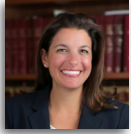
NSBA Director



Lydia Tedone
(Simsbury)

C: 860-543-1523
lydiatedone@yahoo.com

Area Directors



Area 1
Marion Manzo
(Region 15)

C: 203-437-2861
mmanzo@region15.org



Area 4
Chris Stewart
(Putnam)

C: 860-377-2674
lcstewart920@gmail.com



Area 7
Jay Hatfield
(Seymour)

H: 203-804-3795
hatfieldj@seymourschools.org



Area 1
Thomas Van Stone
(Waterbury)

H: 203-756-1121
tvanstone@waterbury.k12.ct.us



Area 4
Ailla
Wasstrom-Evans
(Brooklyn)

C 860-933-2794
awasstrom-evans@brooklynschools.org



Area 7
Melissa Mongillo
(Derby)

B: 203-736-5027
mmongillo@derbyps.org



Area 2
Tyron Harris
(East Hartford)

C: 203-610-2988
harris.tv@easthartford.org



Area 5
Christopher
Gilson
(Newtown)

C: 203-426-7620
gilsonc_boe@newtown.k12.ct.us



Area 7
Edward Strumello
(Seymour)

B: 203-278-7703
strumelloe@seymourschools.org



Area 3
Karen Colt
(Vernon)

C: 860-573-6907
karenmcolt@gmail.com



Area 5
Tina Malhotra
(Ridgefield)

B: 203-894-5550
tmalhotra@ridgefieldps.net



Area 8
Lindsay Dahlheimer
(Region 13)

C: 617-448-4414
ldahlheimer@rsd13.org



Area 3
Sara Kelley
(Stafford)

C: 860-490-2638
kelleys@stafford.k12.ct.us



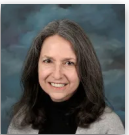
Area 6
Jill McCammon
(Darien)

H: 203-202-2589
jmccammon@darienps.org



Area 8
Seth Klaskin
(Madison)

C: 203-376-6463
klaskin.seth@madisonps.org



Area 6
Lee Goldstein
(Westport)

C: 203-561-6795
lgoldstein@westportps.org



Area 8
Kim Walker
(Westbrook)

C: 860-853-8464
kwalker@westbrookctschools.org



CABE Staff

Here to help meet your needs!

Administration

The Administration Department can help with general information, board relations, student leadership, Board leadership, Accounts receivable, accounts payable, district dues, Unemployment Cost Control, reporter inquiries.



Patrice McCarthy
Executive Director
and General Counsel
pmccarthy@cabe.org



Wendy DeBarge
Coordinator of
Finance and
Administration
wdebarge@cabe.org



Annette Tamburrino
Association/Board
Administrative Assistant
atamburrino@cabe.org

Policy

The Policy Services Department can help with Policy Audits, Custom Policy Manual, Policy Highlights, Policy Update, sample policies, consultancy, C.O.P.S. online policy, broadcast emails, website.



Jody Goeler
Sr. Staff Associate
for Policy Services
jgoeler@cabe.org



Pam Brooks
Sr. Administrative
Associate for
Policy Services
pbrooks@cabe.org



Shannon Hamilton
Administrative
Assistant
for Policy Services
shamilton@cabe.org

Membership

The Membership department can help with Convention, board/superintendent relations, board training, workshops, CABE Journal, CABE CONNecTion, Board Member Academy credits, individual workshops, publications, database, broadcast emails, website.



Nicholas Caruso
Associate Executive
Director for Field
Services and
Technology
ncaruso@cabe.org



Lisa Steimer
Deputy Executive
Director
lsteimer@cabe.org



Nancy Propfe
Administrative
Assistant for
Membership
Services
npropfe@cabe.org

Government Relations

The Government Relations Department can help with advocacy, reporter inquiries, Resolutions, Education Law Summaries, legislative issues, Advocacy Highlights, Day On The Hill, Delegate Assembly, Legislative Wrap Up, broadcast emails, website.



Sheila McKay
Associate Executive Director
for Government Relations
smckay@cabe.org



Gail Heath
Administrative Associate for
Government Relations/Assistant to
the Executive Director
gheath@cabe.org

Labor Relations

The Labor Relations Department can help with legal issues, Negotiations Data Service, Custom Negotiations, District Information, Statistics, reporter inquiries, broadcast emails, website.



Conrad Vahlsing
Deputy General Counsel
cvahlsing@cabe.org



Wilmarie Newton
Administrative Associate for
Digital Communications
wnewton@cabe.org

Educational Affiliate Services & Benefits

CABE's Educational Affiliate Membership program was created in 1996 by the CABE Board of Directors to help meet the needs of education-related institutions that have an interest in public education. CABE invites educational service centers, community colleges, higher education institutions and others interested in public education to take part in this exciting program.

The information you receive as an Educational Affiliate will keep you informed on the issues of concern to Connecticut public schools. You will obtain insight into the latest developments in local public education and gain opportunities to network with school district leaders.

Educational Affiliate members receive the following:



...to the CABE Journal, CABE's leadership publication. Inclusion in a list of members published monthly plus an annual listing that will include more indepth information about services provided. May have the opportunity to have articles published in the Journal.

... to CABE's Legislative Report.

... to CABE's Advocacy Highlights, Labor Relations and Policy Service services by email.

- Member access to the CABE Website.
- Member pricing for the CABE/CAPSS Convention and all CABE workshops throughout the year.
- Recognition at the CABE/CAPSS Convention.



on advertising rates in the CABE Journal

- A copy of CABE's annual report on the results of the Connecticut General Assembly, Education Law Summaries.
- Listing at a special location on our website. If you would like us to add a link to your Home Page on our website, please email your URL to lsteimer@cabe.org. CABE's website is www.cabe.org.

To become a CABE Educational Affiliate

Visit our website at www.cabe.org and click the "About" tab.
Or visit <https://rb.gy/ozizk8>

CABE Journal

The *CABE Journal* is the Association's primary publication. It is a "must read" for board members, superintendents, business managers, other administrators and other education leaders in Connecticut. It is published 11 times a year and is designed to encompass all material in an easy-to-read fashion. Available to members both in print and digitally, readers of the *CABE Journal* find a wide range of educational topics covered in each issue. All CABE members receive the *Journal* as part of their membership.

Why advertise in the *CABE Journal*?

Advertising in the *CABE Journal* offers you the best opportunity to get your message directly to the people who make the financial decisions for our schools and our students. It is the **ONLY** publication in the state that reaches board members, superintendents and their administrative staffs regularly.

Facts:

- Connecticut public schools spend over \$13 billion a year.
- Connecticut school districts employ 52,000 certified staff members.
- Connecticut school districts serve over 450,000 students.
- Connecticut school boards control over 1,000 schools more than any other employer in the state.
- The 166 Connecticut school districts are run by approximately 1,450 local school board members who control how the school district's money is spent.

The *CABE Journal* will be **printed 6** times per year beginning with the September 2024 issue. We will continue to distribute a **digital CABE Journal 11** times per year with a combined July/August edition.

Note: Ads in the digital issues will be linked to the advertisers' website.

2024-2025 CABE Journal Distribution Schedule

Print & Digital Journal

September
December
February
March
April
June

Digital Only Journal

July/August
October
November
January
May



Advertising Rates and Mechanical Specifications

(distributed monthly)

Size (incl. dimensions)	1x	3x	6x
Full page (width 10" x length 13 1/4")	\$625	\$525	\$425
1/2 page (width 10" x length 6 1/2")	\$425	\$375	\$325
1/4 page (width 4 7/8" x length 6 1/2")	\$275	\$225	\$175
1/8 page (width 4 7/8" x length 3 1/4")	\$180	\$160	\$140

Additional discounts for full year (12x) contracts. Please contact Lisa Steimer at 860-571-7446 or lsteimer@cabe.org for more information.

Business and Education Affiliate Members receive a 10% discount on advertising.

Prices effective: July 1, 2024

Circulation: 2,000 copies statewide, to local and regional boards of education members, superintendents, assistant superintendents, business officials, other administrators and related state and national education leaders.

Frequency: Published 11 times a year. The *CABE Journal* will be published digitally 11 times in 2023-2024. Six will be printed in 2024-2025.

Full page

Half page

Quarter page

Eighth page

For the Advertising Insertion Contract:

Visit <https://www.surveymonkey.com/r/5PFFWD3> or contact Lisa Steimer at 860-571-7446.

The Connecticut Association of Boards of education, publisher of the *CABE Journal*, reserves the right to reject advertising which it deems unsuitable, and to refuse acceptance of advertisements from advertisers of questionable credit or trade standing. Publisher reserves the right to enclose any advertisement in a 1 pt. rule, add the word "advertisement" in the upper left hand corner of the advertisement, or otherwise identify display as advertising matter. Rates are subject to change upon thirty days notice. A contracted rate will hold until contract terminates. No cancellations will be accepted by the publisher after the closing date. Protective agreement — the advertiser and/or advertising agency agree to indemnify and protect the publisher from any claims or actions based upon the unauthorized use of names or illustrations, copyright infringements, libelous or false statements contained in their advertisement.

Write for Us!

Find information on the process of submitting articles to the *CABE Journal* by visiting https://www.cabe.org/uploaded/Journal/Writers'_Guide.pdf

CABE/CAPSS Convention

Championing Our Schools Through Unity of Purpose
November 15-16, 2024

STAND OUT FROM THE CROWD

Your presence at the CABE/CAPSS Convention positions your company among the state's education leaders, giving you a distinct edge by participating in this premier event. From increasing awareness to generating greater booth traffic, you will undoubtedly maximize your profile to this critical market.

❖ PLATINUM SPONSORS • \$7,500 PLUS

Benefits also include all Bronze, Silver, Gold and Diamond Sponsorship Benefits, plus

- Placement of one information piece in Convention packets, but no catalogs, please
- Opportunity to briefly address Convention attendees
- 15% Discount on CABE Business Affiliate membership at the Gold, Diamond or Platinum Levels
- 25% discount on a single advertisement in the *CABE Journal*

❖ DIAMOND SPONSORS • \$5,000-7,499

Benefits also include all Bronze, Silver and Gold Sponsorship Benefits, plus

- One e-mail message, approved by CABE, sent on your behalf to registered Convention attendees
- Recognition in pre-Convention E-letter, sent to all board of education members and superintendents
- Sponsor logo featured on our sponsor sign, to be displayed in highly visible area
- 20% discount on a single advertisement in the *CABE Journal*

❖ GOLD SPONSORS • \$2,500-4,999

Benefits also include all Bronze and Silver Sponsorship Benefits, plus

- Recognition in Convention Edition of the CABE Newsletter
- List of Convention attendees containing name and district
- 15% Discount on a single advertisement in the *CABE Journal*

❖ SILVER SPONSORS • \$1,500-2,499

Benefits also include all Bronze Benefits, plus

- 10% discount on a single advertisement in the *CABE Journal*
- One complimentary registration at a CABE workshop (exception: CABE/CAPSS Convention)

❖ BRONZE SPONSORS • \$500-1,499

Benefits include

- Recognition in Convention Program
- Special Sponsor Ribbon for you and your staff
- Custom signage at sponsorship site
- Recognition on the CABE website
- Sponsor name featured on highly visible display

For the CABE/CAPSS Convention Sponsorship Form visit
<https://www.surveymonkey.com/r/X22MPJT>

Contact
Lisa Steimer
860-571-7446
or
lsteimer@cabe.org
for more
information
or to secure a
sponsorship.

Sponsorship Opportunities

Championing Our Schools Through Unity of Purpose November 15-16, 2024

Convention Magazine (print only)

Cover / One page

Half page

Quarter
page

Advertising Rates and Mechanical Specifications

(Distributed to all participants at the Convention)

Size (incl. dimensions)

Back Cover	\$750
(width 5" x length 8")	
Inside Front Cover	\$575
(width 5" x length 8")	
Inside Back Cover	\$550
(width 5" x length 8")	
One Page	\$400
(width 5" x length 8")	
Half Page	\$300
(width 5" x length 3.95")	
Quarter Page	\$250
(width 2.4" x length 3.95")	

*If you are a CABE Business or Education Affiliate Member you are entitled to a partnership discount on advertising in the CABE Journal and the Convention Registration Book and Magazine.
Scholar member 10% discount | Honor Roll member 15% discount | High Honors member 20% discount | Salutatorian member 25% discount Valedictorian member 50% discount*

For the CABE/CAPSS Convention Advertising Insertion Order Form visit

<https://www.surveymonkey.com/r/5BYN75J>

Contact Lisa Steimer at 860-571-7446 or lsteimer@cabe.org for more information

Exhibit Hall

An unparalleled opportunity to showcase your products or services to an audience comprising of decision-makers in Connecticut's public education sector. You play a pivotal role in informing our members about the latest and most innovative offerings available to the educational community.

We offer exhibitors two booth options:

• **Standard booths**..... \$1,900
situated inside the exhibitor hall within the Mystic Ballroom.

• **Premiere booths**.....\$2,400
located in the hallways outside of the Mystic and Marriott Ballrooms.

Booths are allocated on a first-come, first-served basis and sell out quickly.

Contact
Dawn Cole
at 860-236-8640
or
dcole@capss.org
for more
information

CABE Services

Membership gives boards the strength found in numbers, and allows us to better influence legislators with regards to making decisions that are in the best interest of school boards and public education.

CABE is the only statewide organization devoted solely to representing the needs of boards of education.

In this time of increased fiscal stress and uncertainty, it is more important than ever that school boards work together to promote public education.

Advocacy Efforts

Unlimited help for your advocacy efforts, monitoring legislative bills, testifying, developing strategies, informing legislators of impact of legislation in Hartford and Washington, D.C.

Board Professional Development

Regional and statewide workshops, conferences, webinars, and Annual Convention at a discounted fee, as well as unlimited, tailored workshops on topics such as roles and responsibilities, goal setting, board self evaluation, and FOIA at no additional fee.

E- Services

Board Chair listserv, Superintendents' Administrative Professionals listserv, Advocacy Highlights, Policy Highlights and What's Going on at CABE emails.

Legal Services

Unlimited legal consultations, legal updates, legal advocacy.

Media Relations

Increasing media and general public's awareness of concerns of school boards.

Negotiations Service

Information exchange/clearinghouse, settlement trends, contract review, referrals.

Network

Tap into more resources and have a voice in the work representing the needs of boards of education statewide.

Strong leadership is critical in raising student achievement and creating a school climate that fosters academic and personal development.

Policy Service

Unlimited consultations, sample policies, policy information, Reference Manual, Customized Policy Service, Online Service, Update Services, Policy Audit Service, Policy Matters Roundtable.

Publications

CABE Journal; Whole, State and Federal Agendas; Education Law Summaries, and books.

Search Services

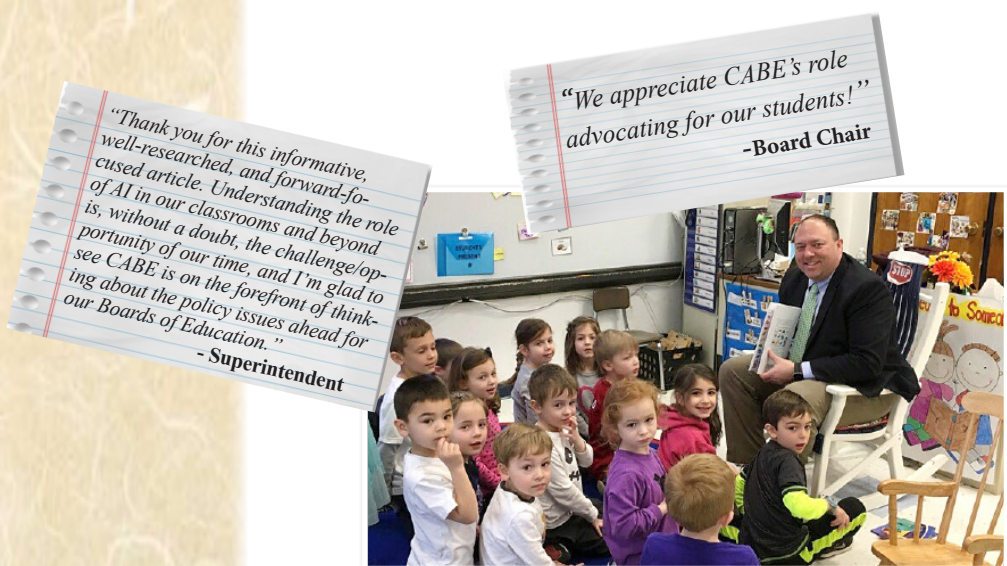
Specializing in executive searches tailored to the specific needs of Connecticut districts.

Unemployment Insurance

Consultation, claims processing, administration, appeal hearings.



All our services are provided by knowledgeable, expert professionals who have great experience in helping boards better serve their communities.



Explanation of For Fee Services

Policy Services

- **Core Policies, Regulations & Bylaws Manual** (\$400) – This service is a CD reference manual of school board policies, regulations and bylaws to provide guidance for boards of education in formulating policy, and for superintendents and their staff in carrying out their administrative functions. After two years, updates may be purchased for \$150 per school year.
- **Annual Policy Update Service** (\$350) – This service provides districts with updates for existing policy manuals reflecting changes in the state and federal law and any judicial action affecting policy and current policy topics of importance and interest.

Contact CABA for more information on the following policy services:

- **Customized Policy Service**
This service tailors a policy manual for a subscribing board of education that reflects the specific needs and priorities of that community.
- **Policy Update Publication**
This publication serves as a guidance tool to help maintain and keep your policy manual up-to-date. Mailed to districts four times during the school year, each issue contains either new topics of interest or policy implications that were affected by state, federal or judicial decisions.
- **Policy Audit Service** (\$2,000-\$3,000) – This service reviews an existing policy manual resulting in a report of its strengths, needs and recommendations for any needed action.
- **Connecticut Online Policy Service (C.O.P.S.)**
This service offers school districts an economical way to post its policy manual online providing instant, current and “searchable” access to board policies.

Board Book

Board Book is a user-friendly, web-based service specifically designed to assist the board, superintendent and central office staff in preparing for and running board of education meetings. Contact the CABA Office for pricing information.

CABE Express

CABE Express (\$400) provides your board members, superintendent and up to five central office administrators can attend CABE workshops offered this year without any hassle and additional cost (when the program includes a meal, a charge of \$20 per person will apply to partially offset food cost).

Administrator Option

The Administrator Option (\$195) is available to principals and/or other supervisors in the school district, as identified by the local board of education, to receive: the *CABE Journal*, *Legislative Hotline*, *Action Alert* and *Legislative Report*. It also permits them to attend workshops at member prices.

CABE Field Services

CABE's Field Services relating directly to board activities are provided free of charge as part of district membership. We also provide customized workshops for boards of education and district staff.

❖ The prices listed above for fee services reflect CABE Member rates. ❖



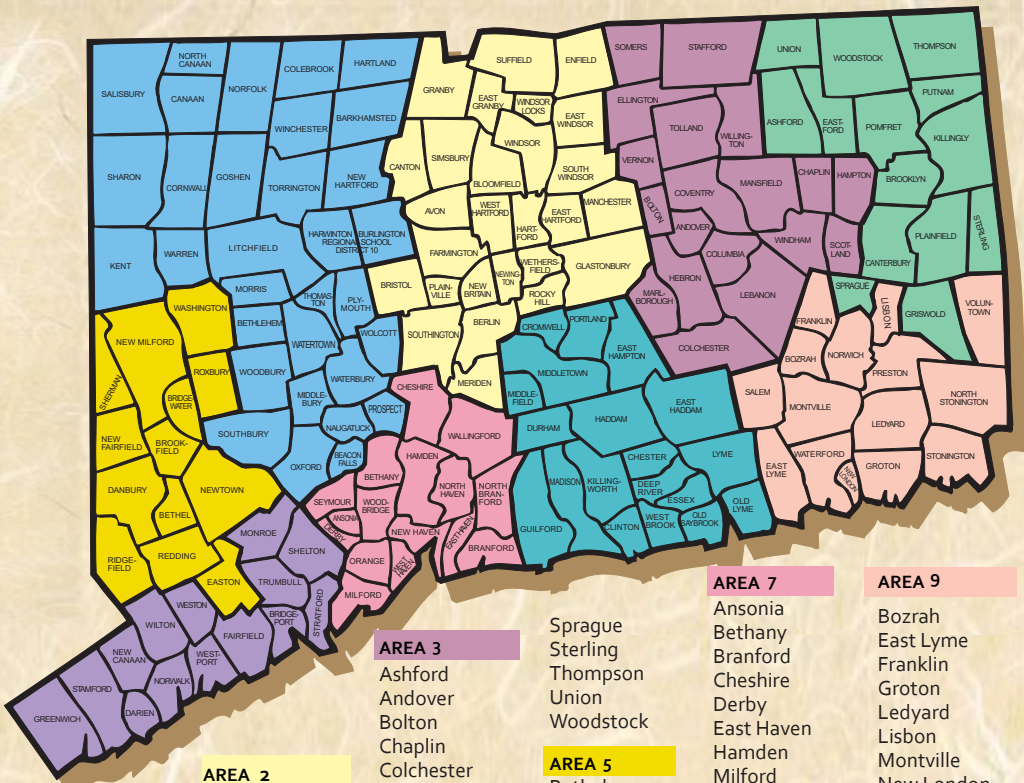
"I am grateful to you and to CABE for the day of training, and especially appreciate all the speakers that provided a wealth of information and am looking forward to reading all the materials provided. In addition, I received the CABE book – *Becoming a Better Board Member* – and am eager to learn all that I can for this new role."

- Newly Elected Board Member

"Thank you for braving the traffic and joining us yesterday. I thought it was an excellent session, strengthened by experiences and anecdotes about the trials and tribulations of being a Board member. Over lunch they remarked that they didn't realize the enormity of the responsibility they were accepting when becoming board members."

- Superintendent

CABE Area Map



AREA 1

Barkhamsted
Canaan
Colebrook
Cornwall
Hartland
Kent
Litchfield
Naugatuck
New Hartford
Norfolk
North Canaan
Oxford
Plymouth
Region 1
Region 6
Region 7
Region 10
Region 14
Region 15
Region 16
Salisbury
Sharon
Thomaston
Torrington
Waterbury
Watertown
Winchester
Wolcott

AREA 2

Avon
Berlin
Bloomfield
Bristol
Canton
East Granby
East Hartford
East Windsor
Enfield
Farmington
Glastonbury
Granby
Hartford
Manchester
Meriden
New Britain
Newington
Plainville
Rocky Hill
Simsbury
Southington
South Windsor
Suffield
West Hartford
Wethersfield
Windsor
Windsor Locks

AREA 3

Ashford
Andover
Bolton
Chaplin
Colchester
Columbia
Coventry
Ellington
Hampton
Hebron
Lebanon
Mansfield
Marlborough
Region 8
Region 11
Region 19
Scotland
Somers
Stafford
Tolland
Vernon
Willington
Windham

AREA 4

Brooklyn
Canterbury
Eastford
Griswold
Killingly
Plainfield
Pomfret
Putnam

Sprague
Sterling
Thompson
Union
Woodstock

AREA 5

Bethel
Brookfield
Danbury
Easton
New Fairfield
New Milford
Newtown
Redding
Region 9
Region 12
Ridgefield
Sherman

AREA 6

Bridgeport
Darien
Fairfield
Greenwich
Monroe
New Canaan
Norwalk
Shelton
Stamford
Stratford
Trumbull
Weston
Westport
Wilton

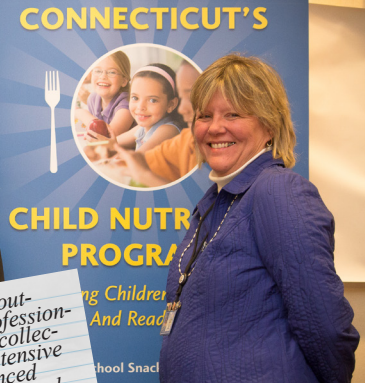
AREA 9

Bozrah
East Lyme
Franklin
Groton
Ledyard
Lisbon
Montville
New London
North Stonington
Norwich
Preston
Salem
Stonington
Voluntown
Waterford

AREA 8

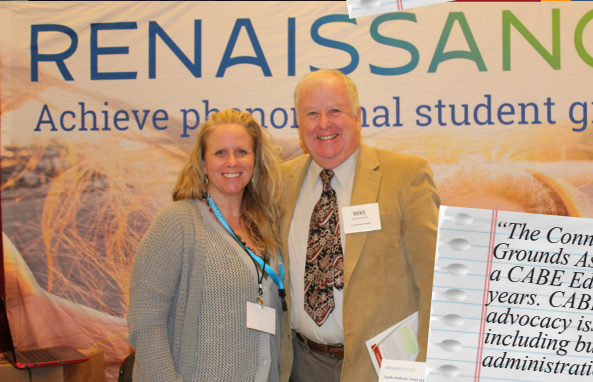
Chester
Clinton
Cromwell
Deep River
East Haddam
East Hampton
Essex
Guilford
Madison
Middletown
Old Saybrook
Portland
Region 4
Region 13
Region 17
Region 18
Westbrook

Partners in Public Education



"Working with CABE has been an outstanding experience marked by professionalism, respect, and support. Their collective knowledge, experience and extensive resources have significantly enhanced our mutual success. I highly recommend collaborating with CABE."

— CASBO



"The Connecticut School Buildings and Grounds Association (CSBGA) has been a CABE Educational Affiliate for many years. CABE keeps us well informed on advocacy issues concerning public schools including buildings, students, facilities and administration."

— CSBGA





Connecticut Association of Boards of Education
81 Wolcott Hill Road
Wethersfield, CT 06109

860.571.7446 • Fax 860.571.7452
www.cabe.org

