



## Introduction

We are requesting proposals for Audio Enhancement Installation at SMS and CVES. Below are the requirements for the proposal. Please remit electronically to Melissa Lazorik at [lazorikm1@svsd410.org](mailto:lazorikm1@svsd410.org) by 4:30 pm on *Monday, October 14th 2024*.

<b>Updates from 10/7/2024 Walk-Through</b>	<p><i>Changes shown in red below and summarized here:</i></p> <ul style="list-style-type: none"><li>• In the CVES library, switch to <u>Control 26CT   JBL Professional Loudspeakers</u> in-ceiling tiles (x12) and set up 2 zones.</li><li>• In the SMS library, change the size of the speaker to JBL Control 25 AV 8" commercial weather-resistant surface mount speakers, white (so it will fit in the space).</li><li>• In SMS classrooms 705 and 805, switch to using 6 speakers instead of the standard 4 to provide more coverage in the extra large classrooms. Contact Rulon Crum &lt;<a href="mailto:Rulon.Crum@AudioEnhancement.com">Rulon.Crum@AudioEnhancement.com</a>&gt; with Audio Enhancement for instructions on how to wire the 6 speakers.</li><li>• For SMS classroom count, add 2 more portables to the total, bringing the total count of spaces up from 35 to 37.</li><li>• For SMS staff room/cooking room, switch from a custom audio system to a classroom system.</li></ul>
--	--

<b>Deadline for Submissions</b>	Monday, October 14, 2024 at 4:30pm
---------------------------------	------------------------------------

<b>Conditions</b>	<ul style="list-style-type: none"><li>• Must be able to attend a pre-bid meeting and site walk-through on Monday, October 7, 2024 between 9 am and 12 Noon starting at Snoqualmie Middle School, 9200 Railroad Avenue SE, Snoqualmie 98065</li><li>• Work must be completed before January 6, 2025</li><li>• Use contract pricing</li></ul>
-------------------	---

<b>Project Goals</b>	We have already completed installation of audio upgrades at the other schools in our district. The last two schools that need updating are Cascade View Elementary School and Snoqualmie Middle School.
----------------------	---

<p><b>Scope of Work</b></p>	<p><b><i>Cascade View Elementary</i></b>  <b>34816 SE Ridge Street Snoqualmie, WA 98065</b></p> <p><b>Total of 36 rooms:</b></p> <ul style="list-style-type: none"> <li>• 34 Sentinel systems for classrooms (including 26 internal classrooms, 6 external portables, 1 computer lab, &amp; 1 stage/alternative music room)</li> <li>• 2 custom audio systems for 1 music room &amp; 1 library</li> </ul> <p><b>Classrooms (x34)</b></p> <ul style="list-style-type: none"> <li>• Install XD-8002 4 speaker Sentinel Classroom System. Speaker wire not provided by installer. Does not include networking any product to school network. Safety wire speakers to ceiling above tiles. Integrate audio out from display to amplifier. *Speakers installed in removable ceiling tiles or onto wall surfaces as needed.</li> <li>• Panduit Raceway: LD5, 1 in Wd, 5/8 in Ht, International White</li> <li>• DCF5IW-X Panduit Drop Ceiling/Entrance End: LD5, 1 in Wd, 1/2 in Ht, Plastic, Off White</li> <li>• Panduit Tee: LD5, 1 in Wd, 1/2 in Ht, Plastic, International White</li> </ul> <p><b>Music Room (x1)</b></p> <ul style="list-style-type: none"> <li>• Installation of custom audio system JBL PRX415M 15" 2-way PA speaker/stage monitor — 300W Continuous Crown, DriveCore™ 2 Series power amplifier — 440W x 2 at 8 ohms, 2,400W x 1 at 4 ohms bridged</li> <li>• Yamaha 12-channel mixer — with compression, effects, USB connection, and DAW software</li> <li>• Shure SLXD24D/SM58 Dual wireless microphone system: includes SLXD4D dual-channel receiver and two wireless SM58 microphones (Band G58 — 470-514 MHz)</li> <li>• Shure BLX14/CVL Wireless lavalier microphone system — includes BLX4 wireless receiver, BLX1 bodypack transmitter, and CVL lavalier microphone (542-572 MHz, Band H10)</li> <li>• Sanus CFR2115 34"-tall steel component rack with heavy-duty casters, accommodates 15 rack spaces (1-3/4"H), or 15 shelved components (3-1/2"H), 23-5/8"W x 34"H x 23-5/8"D</li> <li>• ART PB 4x4 Rackmount 8 Outlet Power Conditioner &amp; SurgeProtector</li> <li>• RapcoHorizon Roadhog Microphone cable with XLR connectors (6 feet)</li> <li>• Speaker Wire, 12awg copper, white 120 1.04 124.80T</li> <li>• On-Stage, Pair of Wall Speaker Brackets (Black)</li> <li>• Hosa Speakon® Connector 2-pole connector</li> <li>• Gator Rackworks 1U Vented Sliding Rack Shelf</li> <li>• Panduit Raceway: LD5, 1 in Wd, 5/8 in Ht, International White</li> <li>• Panduit Tee: LD5, 1 in Wd, 1/2 in Ht, Plastic, International White</li> </ul>
-----------------------------	---

**SNOQUALMIE VALLEY SCHOOL DISTRICT**

	<ul style="list-style-type: none"><li>● Panduit Coupling: LD5, 1 in Wd, 1/2 in Ht, Plastic, International White</li></ul> <p><b>Library (x1)</b></p> <ul style="list-style-type: none"><li>● Installation of custom audio system</li><li>● <del>JBL Control® 29AV 8" commercial weather-resistant surface-mount speaker, white</del> <u>Control 26CT   JBL Professional Loudspeakers</u> installed in ceiling tiles (12 speakers in 2 zones for either side of the space).</li><li>● JBL CSA 2300Z Power amplifier - 300W x 2 @ 70V</li><li>● Rolls RM316, 6-input/3-zone commercial mixer</li><li>● Shure SLXD24D/SM58 Dual wireless microphone system: includes SLXD4D dual-channel receiver and two wireless SM58 microphones (Band G58 — 470-514 MHz)</li><li>● Shure BLX14/CVL Wireless lavalier microphone system —includes BLX4 wireless receiver, BLX1 bodypack transmitter, and CVL lavalier microphone (542-572 MHz, Band H10)</li><li>● Sanus CFR2115 34"-tall steel component rack with heavy-duty casters, accommodates 15 rack spaces (1-3/4"H), or 15 shelved components (3-1/2"H), 23-5/8"W x 34"H x 23-5/8"D</li><li>● ART PB 4x4 Rackmount 8 Outlet Power Conditioner &amp; Surge Protector</li><li>● RapcoHorizon Roadhog Microphone cable with XLR connectors (6 feet)</li><li>● Speaker Wire 18awg, plenum rated</li><li>● Panduit Raceway: LD5, 1 in Wd, 5/8 in Ht, International White</li><li>● Panduit Coupling: LD5, 1 in Wd, 1/2 in Ht, Plastic, International White</li><li>● Panduit Tee: LD5, 1 in Wd, 1/2 in Ht, Plastic, International White</li></ul> <p><b><i>Snoqualmie Middle School</i></b> <b>9200 Railroad Ave SE, Snoqualmie, WA 98065</b></p> <p><b>Total of <del>35</del> <b>37</b> rooms:</b></p> <ul style="list-style-type: none"><li>● <del>29</del> <b>32</b> Sentinel systems for classrooms (including 16 internal classrooms &amp; <del>13</del> <b>15</b> external portables, <u>and 1 staff room/cooking room</u>)</li><li>● <del>6</del> <b>5</b> custom audio systems for double room #601, art room #507, 2 music rooms (band and choir), and 1 library, <del>and 1 staff room/cooking room</del></li><li>● <b>Classrooms (x<del>29</del> <b>32</b>)</b><ul style="list-style-type: none"><li>○ Install XD-8002 4 speaker Sentinel Classroom System. Speaker wire not provided by installer. Does not include networking any product to school network. Safety wire speakers to ceiling above tiles. Integrate audio out from display to amplifier. *Speakers installed in removable ceiling tiles or onto wall surfaces as needed.</li><li>○ Panduit Raceway: LD5, 1 in Wd, 5/8 in Ht, International White</li></ul></li></ul>
--	--

**SNOQUALMIE VALLEY SCHOOL DISTRICT**

	<ul style="list-style-type: none"> <li>○ DCF5IW-X Panduit Drop Ceiling/Entrance End: LD5, 1 in Wd, 1/2 in Ht, Plastic, Off White</li> <li>○ Panduit Tee: LD5, 1 in Wd, 1/2 in Ht, Plastic, International White</li> </ul> <ul style="list-style-type: none"> <li>● <b>Music Room (x2)</b> <ul style="list-style-type: none"> <li>○ Installation of custom audio system JBL PRX415M 15" 2-way PA speaker/stage monitor — 300W Continuous Crown, DriveCore™ 2 Series power amplifier — 440W x 2 at 8 ohms, 2,400W x 1 at 4 ohms bridged</li> <li>○ Yamaha 12-channel mixer — with compression, effects, USB connection, and DAW software</li> <li>○ Shure SLXD24D/SM58 Dual wireless microphone system: includes SLXD4D dual-channel receiver and two wireless SM58 microphones (Band G58 — 470-514 MHz)</li> <li>○ Shure BLX14/CVL Wireless lavalier microphone system —includes BLX4 wireless receiver, BLX1 bodypack transmitter, and CVL lavalier microphone (542-572 MHz, Band H10)</li> <li>○ Sanus CFR2115 34"-tall steel component rack with heavy-duty casters, accommodates 15 rack spaces (1-3/4"H), or 15 shelved components (3-1/2"H), 23-5/8"W x 34"H x 23-5/8"D</li> <li>○ ART PB 4x4 Rackmount 8 Outlet Power Conditioner &amp; SurgeProtector</li> <li>○ RapcoHorizon Roadhog Microphone cable with XLR connectors (6 feet)</li> <li>○ Speaker Wire, 12awg copper, white 120 1.04 124.80T</li> <li>○ On-Stage, Pair of Wall Speaker Brackets (Black)</li> <li>○ Hosa Speakon® Connector 2-pole connector</li> <li>○ Gator Rackworks 1U Vented Sliding Rack Shelf</li> <li>○ Panduit Raceway: LD5, 1 in Wd, 5/8 in Ht, International White</li> <li>○ Panduit Tee: LD5, 1 in Wd, 1/2 in Ht, Plastic, International White</li> <li>○ Panduit Coupling: LD5, 1 in Wd, 1/2 in Ht, Plastic, International White</li> </ul> </li> <li>● <b>Library, Art, <del>Staff</del> &amp; Double-size Rooms (x4 3)</b> <ul style="list-style-type: none"> <li>○ Installation of custom audio system</li> <li>○ JBL Control® 29AV 8" commercial weather-resistant surface mount speaker, white</li> <li>○ In the SMS library, change size to JBL Control 25 AV 8" commercial weather-resistant surface mount speakers, white (so it will fit in the space)</li> <li>○ JBL CSA 2300Z Power amplifier - 300W x 2 @ 70V</li> <li>○ Rolls RM316, 6-input/3-zone commercial mixer</li> </ul> </li> </ul>
--	---

	<ul style="list-style-type: none"> <li>○ Shure SLXD24D/SM58 Dual wireless microphone system: includes SLXD4D dual-channel receiver and two wireless SM58 microphones (Band G58 — 470-514 MHz)</li> <li>○ Shure BLX14/CVL Wireless lavalier microphone system —includes BLX4 wireless receiver, BLX1 bodypack transmitter, and CVL lavalier microphone (542-572 MHz, Band H10)</li> <li>○ Sanus CFR2115 34"-tall steel component rack with heavy-duty casters, accommodates 15 rack spaces (1-3/4"H), or 15 shelved components (3-1/2"H), 23-5/8"W x 34"H x 23-5/8"D</li> <li>○ ART PB 4x4 Rackmount 8 Outlet Power Conditioner &amp; Surge Protector</li> <li>○ RapcoHorizon Roadhog Microphone cable with XLR connectors (6 feet)</li> <li>○ Speaker Wire 18awg, plenum rated</li> <li>○ Panduit Raceway: LD5, 1 in Wd, 5/8 in Ht, International White</li> <li>○ Panduit Coupling: LD5, 1 in Wd, 1/2 in Ht, Plastic, International White</li> <li>○ Panduit Tee: LD5, 1 in Wd, 1/2 in Ht, Plastic, International White</li> <li>○ In SMS double-size classrooms 705 and 805, add an additional 2 speakers to the room so the amp will be connected to 6 speakers instead of the standard 4.</li> </ul>
--	--

<b>Timeline</b>	<ul style="list-style-type: none"> <li>● Project should be completed before January 6, 2025</li> <li>● Work can be scheduled weekdays after 3pm for SMS and after 4pm for CVES</li> <li>● Work can be scheduled anytime on weekends and anytime over winter break December 21, 2024-January 5, 2025</li> </ul>
-----------------	--

<b>Attachments</b>	<ul style="list-style-type: none"> <li>● Audio Enhancement Sentinel Spec Sheets</li> <li>● CVES Site Plan</li> <li>● SMS Site Plan</li> </ul>
--------------------	---

---

## SNOQUALMIE VALLEY SCHOOL DISTRICT

8001 Silva Avenue S.E. | P.O. Box 400 | Snoqualmie, WA 98065 | (425) 831-8000 | [www.svsd410.org](http://www.svsd410.org)



# CA-70 Amplifier/Receiver Specifications

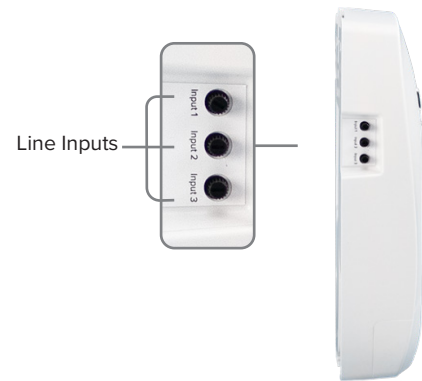
Front View



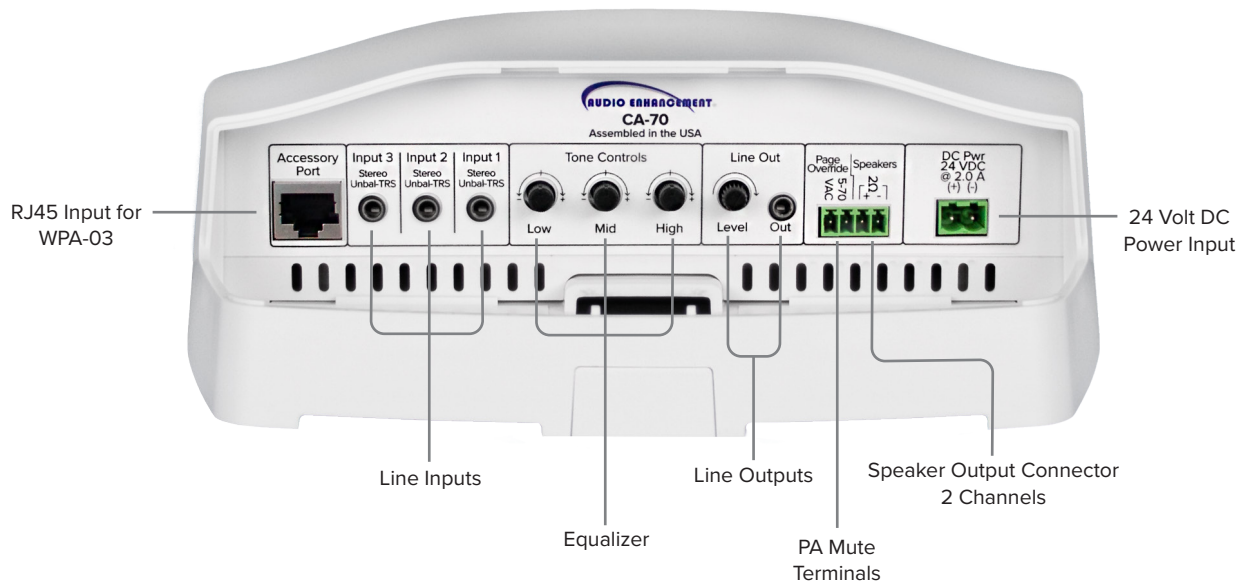
Front View - Panel Removed



Side View



Flat View - Panel Removed



The **CA-70** classroom amplifier with integrated receiver provides quality audio for teachers, students, and multimedia sources. This unit is equipped with an Eco Mode, which automatically reduces power consumption when no signal is present. It also features a PA voice override, so announcements can still be heard.





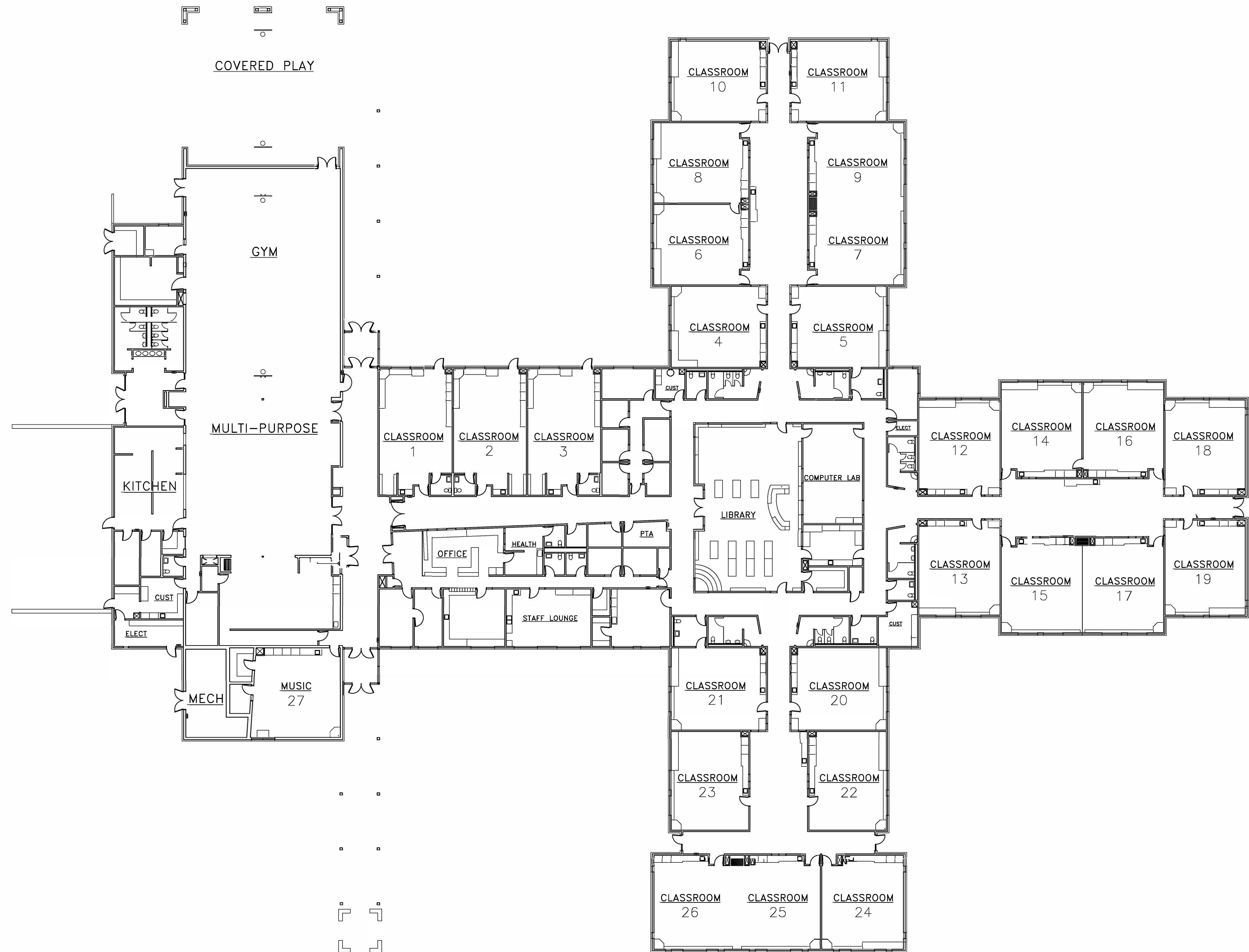
## CA-70 Specifications

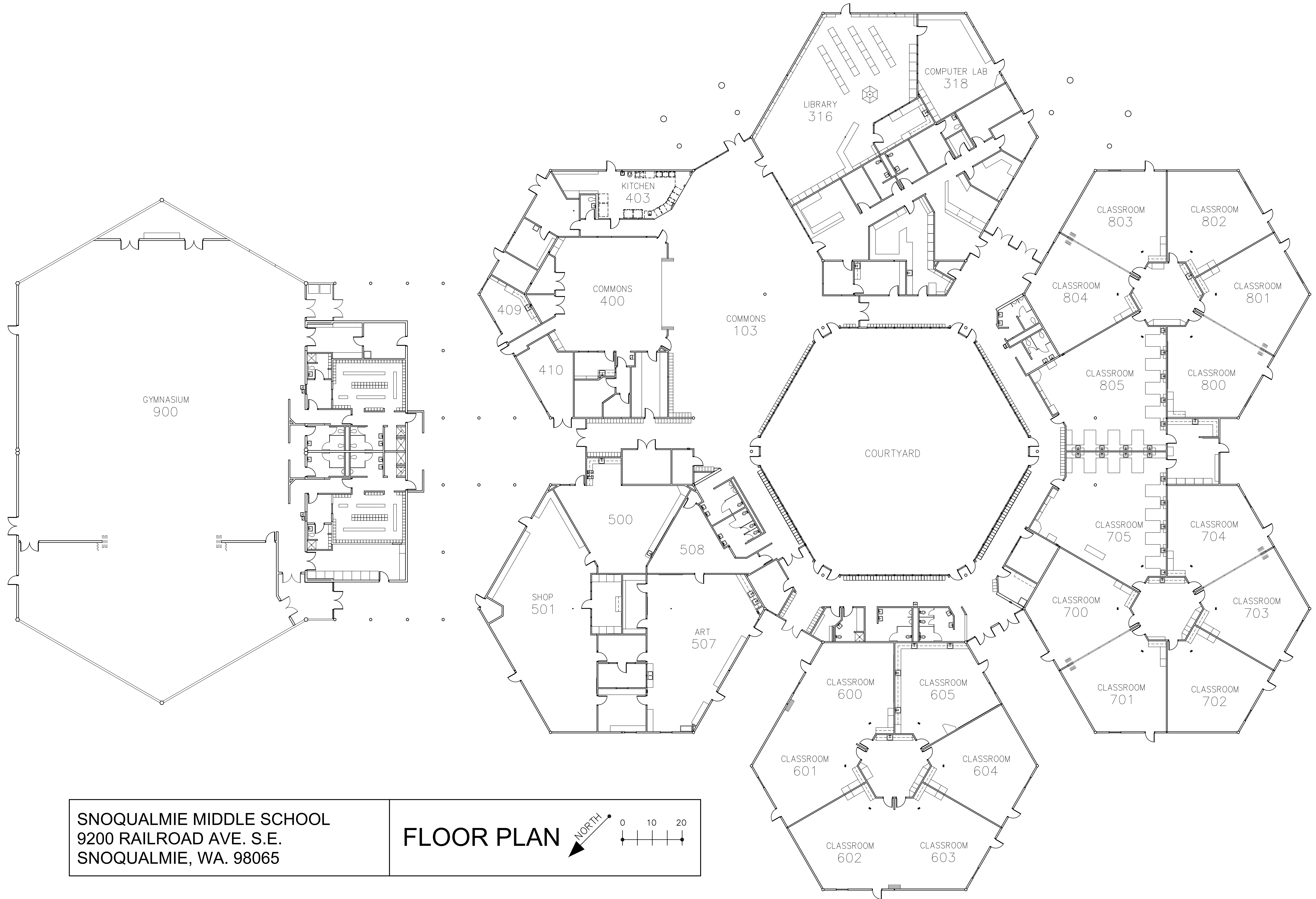
Slim design and efficient heat dissipation allows for easy mounting in a variety of applications including:

- Media carts
- Behind interactive displays
- Inside cabinetry
- In ceiling

Audio Power	50 Watts
Power Requirements	24 VDC power supply
Connectors	Automatic switching between front panel and rear panel input 3 variable gain line inputs: <ul style="list-style-type: none"><li>• Line 1</li><li>• Line 2</li><li>• Line 3</li></ul> 1 Traditional variable gain line output with front panel volume control + connector for assistive listening devices
PA Connector	Connects to Public Address System and mutes amplifier during announcements
Accessory Port	Accepts WPA-03 Remote Wall Plate that provides an additional input with level control and ALD output with level control
Equalization	3-Band equalizer (Bass, Mid, Treble)
Receiver Specifications	XD Technology 1.9 GHz
Coverage	Adjustable for optimal coverage from small classrooms to cafes, gyms, and other large spaces
Microphone Type	Unidirectional electret condenser microphone
Weight	2.15 lbs (0.98 kg)
Dimensions	12.25 (H) x 8.75 (W) x 2.75 (D) in. (311.15 x 222.25 x 69.85 mm)







SNOQUALMIE MIDDLE SCHOOL  
9200 RAILROAD AVE. S.E.  
SNOQUALMIE, WA. 98065

FLOOR PLAN

NORTH

0 10 20