



Visual & Performing Arts

Board Workshop 2024

Fort Worth
INDEPENDENT SCHOOL DISTRICT

FWISD Commitment to Arts Education



Fort Worth ISD is committed to ensuring that every student, from kindergarten through 12th grade, has access to high-quality arts education. This commitment reflects our belief that the arts are essential not only for fostering creativity but also for educating the whole child by enhancing academic achievement, promoting cultural awareness, and supporting overall student development.



Our Numbers

Elementary Students receive art and music instruction at every campus in the district.

Secondary Participation

+ Middle School –

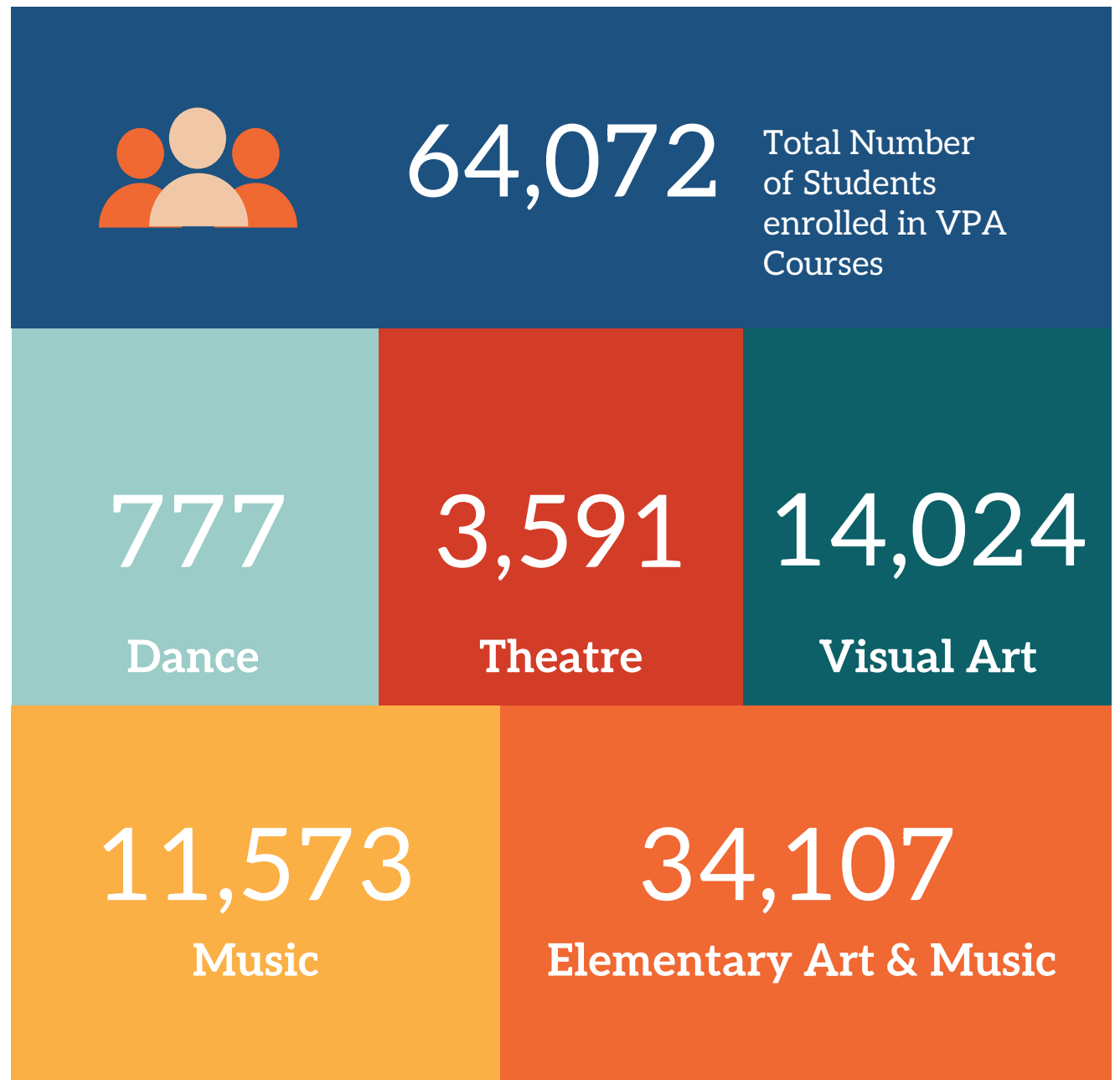
+ Specialized Programs

- Dance, Mariachi, Orchestra, Theatre

+ High School

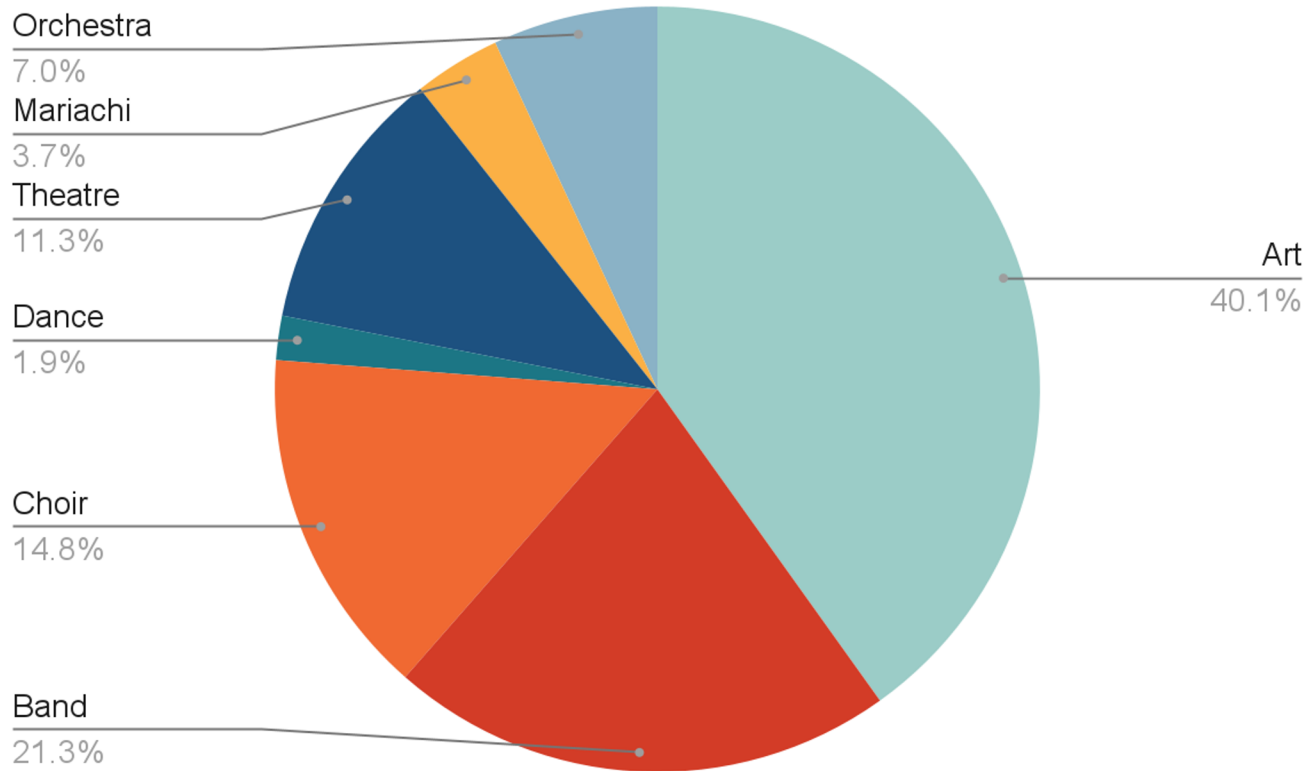
+ Specialized Programs

- Dance, Mariachi, Orchestra



Data Source: FOCUS Report as of 10/3/24

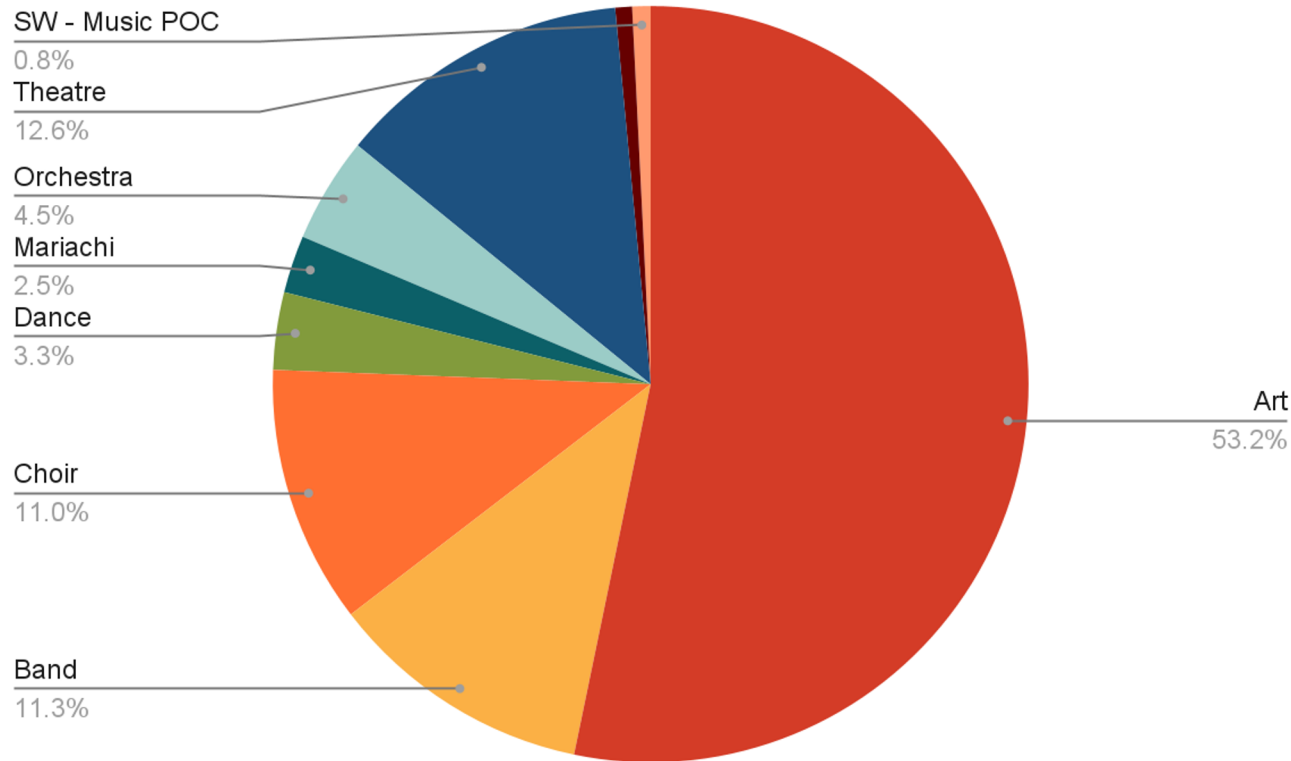
Middle School Participation



- Art - 6,076
- Band - 3,232
- Choir - 2,236
- Dance - 283
- Mariachi - 556
- Orchestra - 1,056
- Theatre - 1,707

Data Source: FOCUS Report as of 10/3/24

High School Participation



- Art - 7,948
- Band - 1,692
- Choir - 1,645
- Dance - 494
- Mariachi - 367
- Orchestra - 672
- Piano - 107
- Theatre - 1,884
- Music & Sound Design - 117

Data Source: FOCUS Report as of 10/3/24

VPA Staff by Content Area



Visual Art - 167 teachers

Dance - 10 teachers

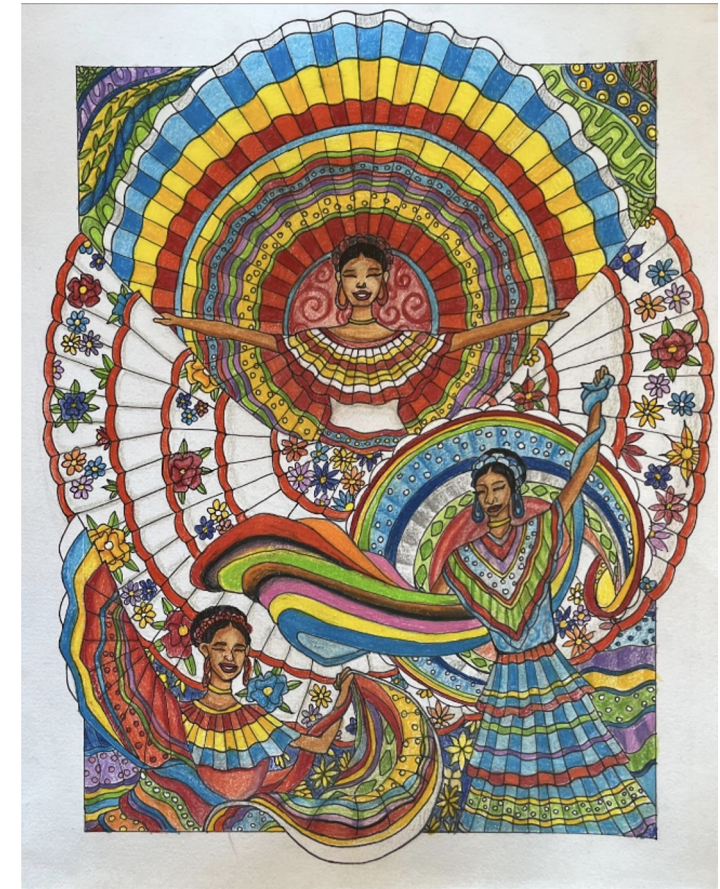
Music - 209 teachers

Theatre - 36 teachers

Course Offerings — Visual Art

- Elementary Art
- Middle School — Art I, Art II, Art III
- High School
 - Art I, Art II, Art III, Art IV
 - Drawing I, II, III
 - Painting I, II, III
 - Photography I, II, III
 - Sculpture I, II, III
 - Ceramics I, II, III
 - Jewelry*
 - AP 2D, AP 3D, AP Drawing
 - AP Art History

*only offered at Arlington Heights HS



Emanuel Magana, Carter Riverside High School

Course Offerings – Instrumental Music

- **Middle School (Level I-III)**
 - Band
 - Mariachi*
 - Orchestra**
- **High School (Level I-IV)**
 - Band
 - Jazz Ensemble
 - Mariachi***
 - Orchestra****



Elder MS Mariachi; FWISD HS All-District Orchestra; Paschal HS Marching Band



*MS Mariachi offered at Elder, James, Meacham, Riverside, Rosemont, and WLI

**MS Orchestra offered at ALA, Benbrook, Daggett Montessori, Elder, James, Kirkpatrick, McLean 6, McLean, McClung, Meacham, Monnig, Riverside, Rosemont, Stripling, Wedgwood, and YWLA

***HS Mariachi offered at Carter Riverside, South Hills, North Side, Paschal, Polytech, and WLI

****HS Orchestra offered at Arlington Heights, Benbrook, Carter Riverside, Diamond Hill Jarvis, Eastern Hills, IMTVPA, North Side, Paschal, Polytech, Southwest, South Hills, Trimble Tech, and YWLA

Course Offerings – Choral & Elementary Music

- Elementary Music
- Choir I (MS), Choir II (MS), Choir III (MS)
- Show Choir II (MS), Show Choir III (MS)
- Choir I (HS), Choir II (HS), Choir III (HS), Choir IV (HS)
- Show Choir I (HS), Show Choir II (HS), Show Choir III (HS), Show Choir IV (HS)*
- Piano (HS)- IMT
- Music Theory (HS)
- AP Music Theory (HS)**
- Dual Credit Music Appreciation (HS)***

*only offered at SWHS, PHS, AHHS, WJMS, Rosemont, Stripling, Wedgwood

**only offered at IMT, CRHS, AHHS, PHS, YWLA

***only offered at O.D. Wyatt, IMTVPA, WHHS

No Choral Program: Polytechnic HS, Morningside MS, YMLA



FWISD Elementary Music Festival



FWISD Gospel Fest

Course Offerings – Dance

- Middle School
 - Principles of Dance I – III*
- High School**
 - Principles of Dance I – IV
 - World Dance
 - Health & Wellness for Dancers
 - Dance Production
 - Dance Company/Ensemble
 - Dance Genre Specific Courses
 - Ballet, Modern, Jazz, Tap

*only offered at Forest Oak MS (LAN) & Monnig MS

** only offered at Arlington Heights HS, Diamond Hill-Jarvis, IMTVPA, O.D. Wyatt HS, and South Hills HS



I.M. Terrell Academy for STEM & VPA Dance Students

Course Offerings – Theatre

- Middle School Theatre I – III
- High School Theatre I – IV
- Technical Theatre I – IV
- Musical Theatre I – IV
- Theatre Production I – IV
- Playwriting & Directing
- Dual Credit Theatre I*
- Dual Credit Technical Theatre I*

*Course only offered at Western Hills HS

Theatre not offered at Forest Oak MS (LAN), INA, Leonard MS, Monnig MS, YMLA, and YWLA



FWISD Summer Musical - *Cinderella* 2024

Impact on Student Academic Performance

When comparing students who have completed only the state-required arts courses with those who have been enrolled in Fine Arts courses for two consecutive years or more, we observe a significant increase in academic growth across key STAAR performance indicators. Students with extended participation in Fine Arts consistently show higher rates of achievement in the categories of Approaches, Meets, and Masters.

Instructional Support & Resources



Professional Development

Regular PLC for our teachers to collaborate on instructional strategies and share best practices.

Content specific sessions are designed to enhance teaching methods and offer strategies for student growth.



Learning Walks

Campus leaders have the opportunity to collaborate with our staff to observe classroom instruction, student engagement, and curriculum fidelity.



Look-Fors & T-TESS

We support campus administrators by offering clear Look-Fors that outline expectations for student engagement, lesson creativity, and resource utilization in classrooms.

We also provide T-TESS-aligned feedback, helping administrators deliver accurate, subject-specific evaluations and targeted instructional support for fine arts teachers.



Instructional Support

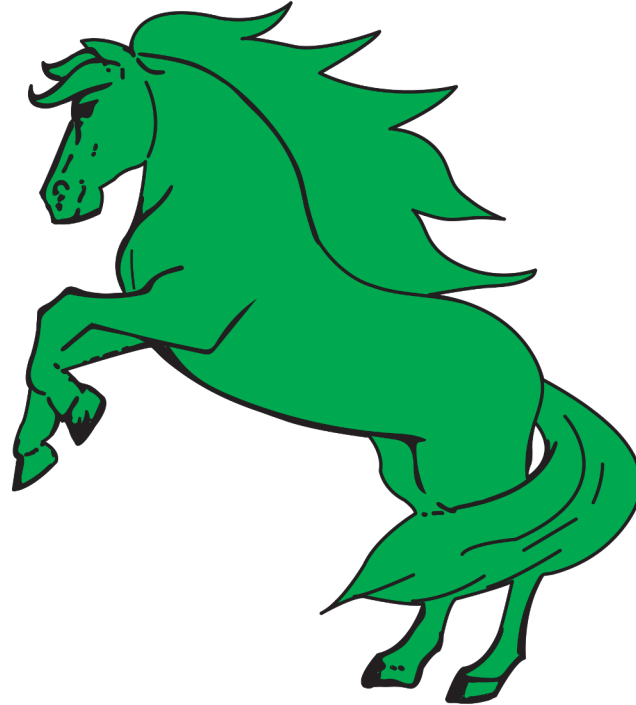
Each discipline within Visual & Performing Arts is supported by specialized staff who provide instructional support and coaching to teachers across the district.



Curriculum & Resources

Provide a comprehensive curriculum aligned with state standards (TEKS) across all levels, along with lesson plans, assessment tools, and pacing guides to support high student achievement.

Program Spotlight - South Hi Mount ES



Dulce Ramirez, South Hi Mount ES

Isabel Lopez - Art

Marissa Black - Music

Collaboration & Vertical Alignment

Campus Programs

Program Spotlight - Jean McClung MS



Adam Desmond - Theatre

Program Enrollment: 135

Spring Production — *Seussical the Musical, Jr.*

Collaboration with Community Partner - Maroon 9



Program Spotlight - Diamond Hill-Jarvis HS



DHJ

Kacee Dobbins - Dance (product of FWISD; Arlington Heights)

Program Enrollment: 68

FWISD Dance Showcase

Program Growth & Department Collaboration

Community Partnerships Spotlight



Bass Hall Children's Education Program

Students in Grades 1 - 5 attend cross curricular programming

Masterclasses and variety of tickets to attend performances consisting of musical theatre productions, etc.



THE CLIBURN

Cliburn in the Classroom

The program offers students in Grades K-5 to witness an interactive concert experience performed by a virtuoso pianist on FWISD campuses.



Fort Worth Symphony Orchestra

Discover Series - kinder students

Students in 4th grade perform in a participatory program with curriculum provided by Carnegie Hall.

Side-by-Side Concert with orchestra programs in the district.



STEINWAY & SONS

Steinway

FWISD was the first Steinway Select School District in the Nation which provided campuses with high quality instruments for instruction and performance. **320 pianos**

TIA Cohorts

Cohorts build on each other to expand eligibility to more teachers.

Eligible or Anticipated Eligible Teachers	Eligible Courses in Data Capture Years			
	2021-2022 1319	2022-2023 2601	2023-2024 3200**	2024-2025 3400**
Cohort D 1319	<ul style="list-style-type: none"> • K-8 Math • K-8 Reading 			
Cohort E 2601	Cohort D + inclusion teachers* and...	<ul style="list-style-type: none"> • Algebra I & II, Geometry • English I & II • 8th Grade Social Studies, U.S. History • Select CTE courses 		
Cohort F 3200**	Cohort D + Cohort E +		<ul style="list-style-type: none"> • 6-8 Science, Biology • AP, OnRamps, DC U.S. History • Elementary Music (4th) • Instrumental & Vocal Music (MS & HS) • Additional CTE courses 	
Cohort G **3400	Cohort D + Cohort E + Cohort F +			<ul style="list-style-type: none"> • 5th Grade Science • RISE 4-8 Reading, Math, Eng I & II, and Algebra I who do not take MAP • Elementary Art (2nd) • MS Art, HS Art I • Additional CTE courses

*Inclusion teachers are part of every cohort beginning in Cohort E **Preliminary estimate

Department Accolades



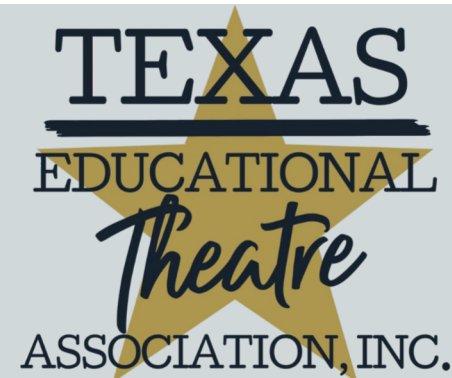
12 years in a row!

975 school districts are recognized as Best Communities for Music Education, celebrating the efforts in making music a key part of a well-rounded education.



District of Distinction

Out of over 1,200 eligible districts and learning institutions in Texas, 96 met the high standards to receive this award, placing us in the top 5.5% of Visual Art programs in the state.



District of Distinction

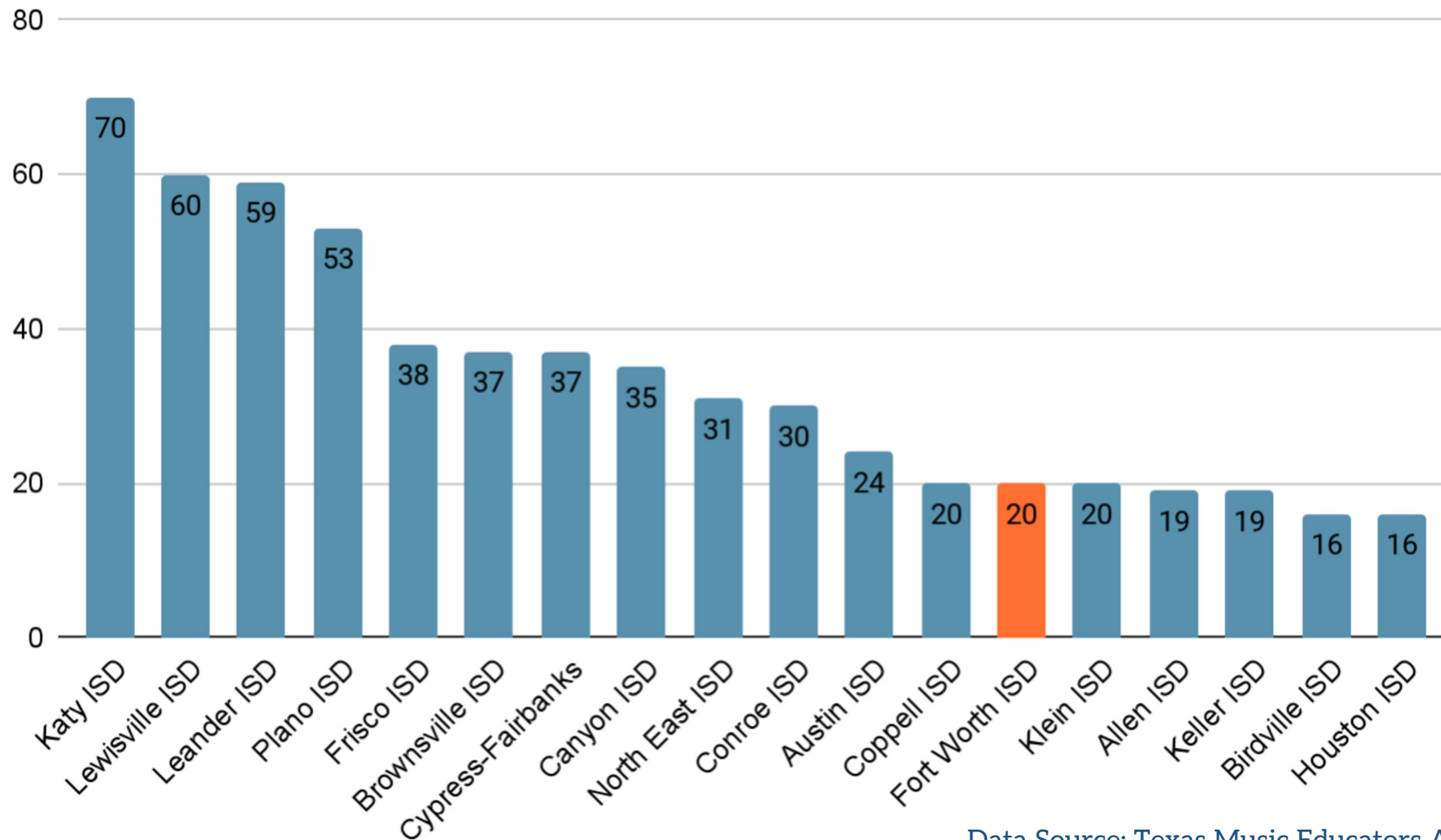
Exemplary District - Outstanding contributions to raise the standards for theatre education FWISD.



Educational Theatre Assc.

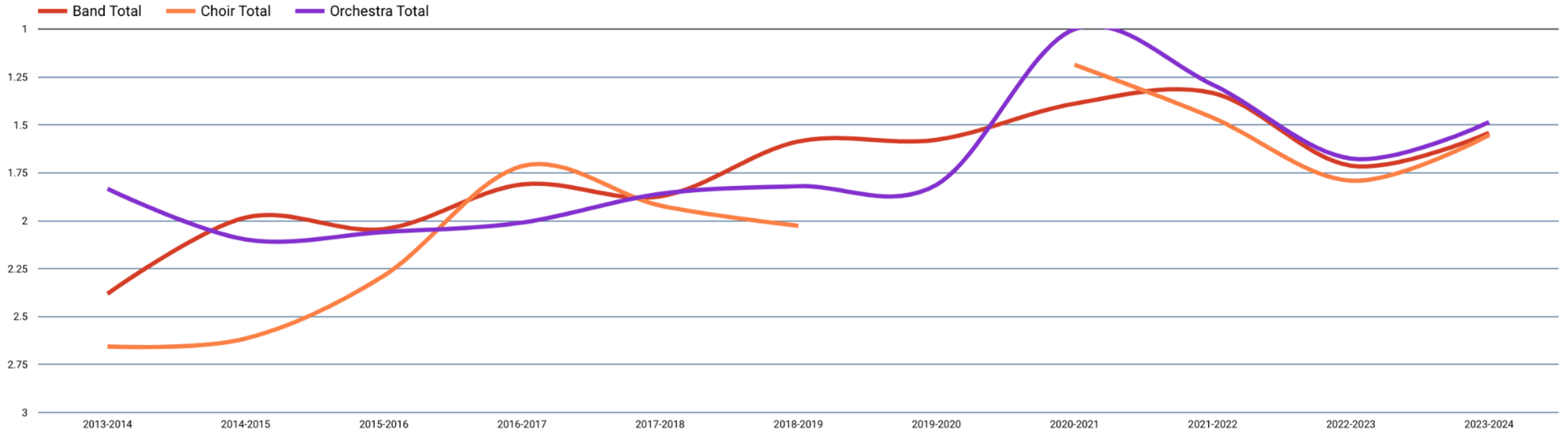
A distinction from the Educational Theatre Association (EdTA) that recognizes schools and school systems that exemplify excellence in theatre education.

TMEA – All-State Musicians



Data Source: Texas Music Educators Association, February 2024

UIL – Music



Data Source: University Interscholastic League

Our district's UIL results show a strong recovery post-COVID, with most bands, choirs, and orchestras earning 1s (Superior) and 2s (Excellent). Only a few programs received 3s (Good), contributing to a low overall average score. Despite past challenges, our ensembles are thriving, and we continue striving for excellence.

UIL – State Mariachi



Carter Riverside HS, North Side HS, Paschal HS, & South Hills HS Mariachi groups advance to the UIL State Mariachi Festival

UIL – One Act Play (AREA)



Arlington Heights HS - *The Old Man and the Old Moon*



I.M. Terrell Academy for STEM & VPA - *A Monster Calls*

VASE – Art Competition

Elementary Art - 131 students
91 winners

Middle School Art - 133 students
64 winners

High School Art - 572 students
25 Gold Seal Students



Jared Castro, Polytechnic HS
Data Source: Texas Art Education Association

VPA Signing Day

VPA SIGNING DAY

MAY 9, 2025

IM TERRELL PERFORMING ARTS CENTER

Fine Arts Signing Day is a celebratory event honoring students who have earned scholarships for their exceptional talents in various fine arts disciplines. As they prepare to embark on their post-secondary journeys, we recognize their hard work and dedication.



VISUAL &
PERFORMING ARTS

Fort Worth
INDEPENDENT SCHOOL DISTRICT