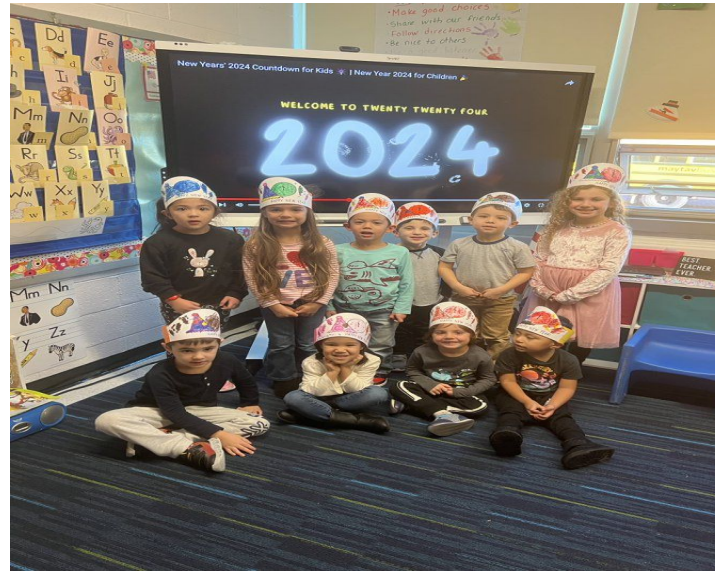


Preschool Expansion



We shall provide all children with an education that develops open-minded thinkers with the strong academic and interpersonal skills to thrive in an ever-changing world and make it a better place for all.



We shall provide all children with an education that develops open-minded thinkers with the strong academic and interpersonal skills to thrive in an ever-changing world and make it a better place for all.

Preschool Expansion Aid

- 5 years to implement
- Must service 90% of universe
- Maximum class size is 15
- 2:15 Teacher/ Student ratio
- All special education programs will be full day
- 6 hour instructional day
- Must use an approved State curriculum

We shall provide all children with an education that develops open-minded thinkers with the strong academic and interpersonal skills to thrive in an ever-changing world and make it a better place for all.

Preschool Expansion Aid Reminders

- We were awarded preschool expansion funds on the first application!
- We were awarded additional funding for:
 - The building of 16 additional preschool classrooms (Malberg and Kilmer)
 - Bathroom renovations at Malberg
- We are 8 months into a 5 year expansion!
- We continue to have a stellar preschool program

The implementation of preschool expansion has been intentional to accelerate enrollment and scope over the 5 year period.

We shall provide all children with an education that develops open-minded thinkers with the strong academic and interpersonal skills to thrive in an ever-changing world and make it a better place for all.

Path to Preschool Excellence



We shall provide all children with an education that develops open-minded thinkers with the strong academic and interpersonal skills to thrive in an ever-changing world and make it a better place for all.





We shall provide all children with an education that develops open-minded thinkers with the strong academic and interpersonal skills to thrive in an ever-changing world and make it a better place for all.

Strengths

- Happy Students!
 - Consistent
 - Implemented with fidelity
 - Course correcting to excellence
- Curriculum
 - Creative Curriculum
 - Implemented with fidelity
 - Consistent
 - Growth
- Developmental Growth
 - Meals and Food pallet
 - Toileting
 - Social interactions
 - Independence (cleaning up, making decisions, etc...)

We shall provide all children with an education that develops open-minded thinkers with the strong academic and interpersonal skills to thrive in an ever-changing world and make it a better place for all.

Strengths

- Professional Development
 - Teaching Strategies
 - Creative Curriculum
 - Second Step
- Early Childhood Environmental Rating Scale
 - Trained
 - Observed
 - Passed

We shall provide all children with an education that develops open-minded thinkers with the strong academic and interpersonal skills to thrive in an ever-changing world and make it a better place for all.

Growth

- Communication
 - Icon “The Cubs”
 - Needs to be more frequent and timely
 - Consistency across providers
- Community Engagement
 - Building sense of community
 - Events
- Application Process
 - Number of available seats
 - Waitlist process
- Malberg Time of Transition
 - Trust
 - Morale
 - Communication
 - Inclusive Opportunities

We shall provide all children with an education that develops open-minded thinkers with the strong academic and interpersonal skills to thrive in an ever-changing world and make it a better place for all.

Preschool is Popular



We shall provide all children with an education that develops open-minded thinkers with the strong academic and interpersonal skills to thrive in an ever-changing world and make it a better place for all.

Who We Are

Dr. Farrah Mahan	Assistant Superintendent
Danyelle Edwards	Principal Malberg ECC
Amanda Gerald	Community Parent Involvement Specialist
Zenetta Bronson	Preschool Instructional Coach
Diana Polito	Preschool Intervention and Referral Specialist
Catherine Briggs	Preschool Social Worker



We shall provide all children with an education that develops open-minded thinkers with the strong academic and interpersonal skills to thrive in an ever-changing world and make it a better place for all.

5 Year Plan for Growth (Projected)

School Year	Additional Classes	Additional Students	Total Classes	Total Students
2022 - 2023	n/a	n/a	22	232
2023 - 2024	3	45	14	144
2024 - 2025	10	150	24	294
2025 - 2026	41 (16 in-district, 25 provider site)	615	70	984
2026 - 2027	25 (provider site)	375	95	1,359
2027 - 2028	27 (provider site)	405	122	1,764

We shall provide all children with an education that develops open-minded thinkers with the strong academic and interpersonal skills to thrive in an ever-changing world and make it a better place for all.

We Are Growing - 2023-2024

Discovery Corner	3 classes	45 students
Malberg	11 classes	99 students
Mosaic	3 classes	45 students

TOTAL PRESCHOOL EXPANSION STUDENTS = **189**

TOTAL PRESCHOOL STUDENTS INCLUDING PRESCHOOL DISABLED (inclusion)= **255**

These numbers do not include students enrolled in self contained classes at the preschool.

We shall provide all children with an education that develops open-minded thinkers with the strong academic and interpersonal skills to thrive in an ever-changing world and make it a better place for all.

We Are Growing 2024 - 2025



Cadence Academy	1 class	15 students
Discovery Corner	7 classes	105 students
Kindercare	2 classes	30 students
Malberg	11 classes	99 students
Mosaic	4 classes	60 students

TOTAL PRESCHOOL EXPANSION STUDENTS = **309**

TOTAL PRESCHOOL STUDENTS INCLUDING PRESCHOOL DISABLED (inclusion)= **375**

THIS IS AN INCREASE OF 8 CLASSES and 120 GENERAL EDUCATION STUDENTS FOR THE 24-25 sy!

These numbers do not include students enrolled in self contained classes at the preschool.

We shall provide all children with an education that develops open-minded thinkers with the strong academic and interpersonal skills to thrive in an ever-changing world and make it a better place for all.





CALLING ALL PRIVATE
PRESCHOOL PROVIDERS IN
CHERRY HILL AND
SURROUNDING AREAS

WE WANT TO PARTNER WITH
YOU!!! PLEASE CONTACT US IF
INTERESTED.

fmahan@chclc.org

We shall provide all children with an education that develops open-minded thinkers with the strong academic and interpersonal skills to thrive in an ever-changing world and make it a better place for all.



We shall provide all children with an education that develops open-minded thinkers with the strong academic and interpersonal skills to thrive in an ever-changing world and make it a better place for all.

What Will Be Taught (tentative)

Arrival, preparation, and choice activities	30 minutes
Group Meeting	20 minutes
Choice Time	60 minutes
Cleanup, handwashing, and snack	20 minutes
Small Groups	20 minutes
Outdoor Choice Time	40 minutes
Read-Aloud	15 minutes
Lunch	40 minutes
Rest/Quiet Activities	45 minutes
Outdoor Choice Time	30 minutes
Read Aloud	15 minutes
Limited Choice Time and Small Groups	30 minutes
Group Meeting and dismissal	20 minutes

The Creative Curriculum[®] for Preschool

Transportation

- All buses have a aide to assist with loading and unloading students
- Buses are equipped with built in car seats, if needed
- Transportation Information will be available in Genesis
- Kudos to Linda King Transportation Supervisor

Before and Aftercare

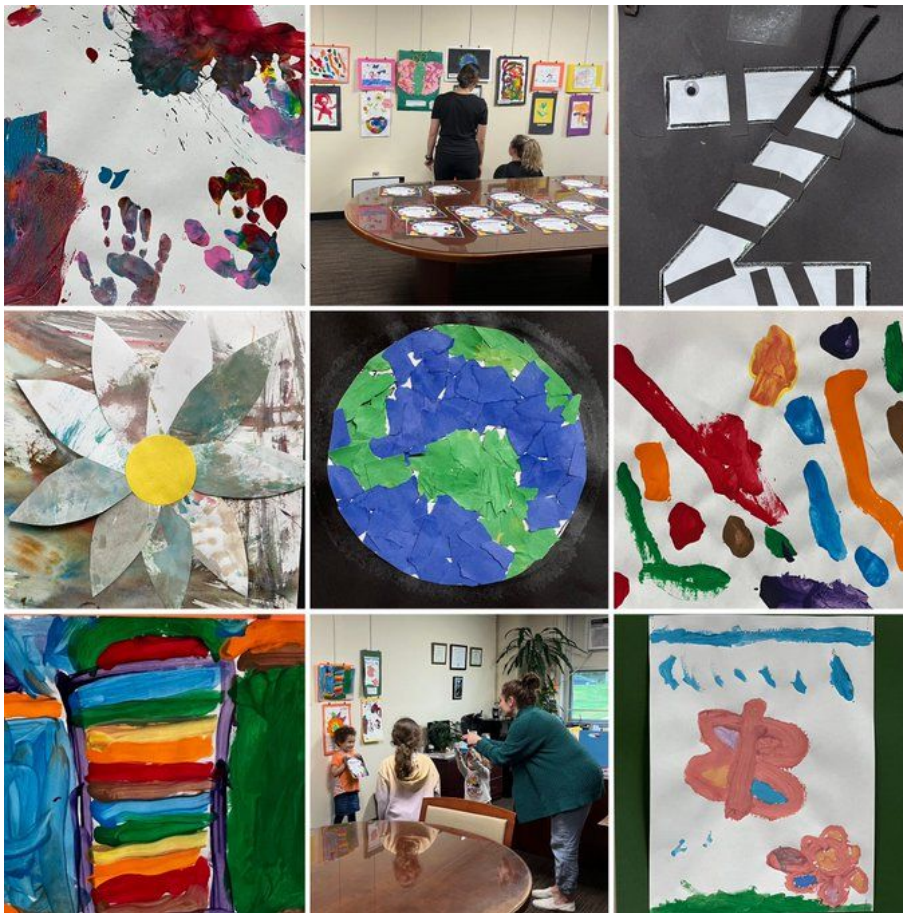
- Each location will have before and aftercare
 - Pricing is set by the location
 - Times are set by the location
 - For Malberg Right at School will be the provider
 - Working diligently to get information finalized
 - Contract was awarded 2 weeks ago
- A flyer with all details is forthcoming. It will be included in the back to school information for parents
- Private providers have shared the information with parents as requested.

Communication

- Calendar of events
 - Consistency
 - Planning ahead
 - Community partnerships
- Newsletter
 - Community Parent Involvement Specialist
 - Be In the Know!
- PTA
 - We need your support
 - Room parents!
 - Private Provider Liaisons

Communication

- Early Childhood Advisory Committee
 - Share your highlights and areas of growth
 - Community collaborative
 - August 22nd, 11:00 am
 - September 5th 4:00 pm
 - December 12th 4:00 pm
 - March 13th 4:00 pm
 - June 12th 4:00 pm
- Preschool Orientation
 - August 29, 2024 - 2:45 PM
 - At every preschool location



We shall provide all children with an education that develops open-minded thinkers with the strong academic and interpersonal skills to thrive in an ever-changing world and make it a better place for all.



We shall provide all children with an education that develops open-minded thinkers with the strong academic and interpersonal skills to thrive in an ever-changing world and make it a better place for all.