



**NEW JERSEY DEPARTMENT OF EDUCATION
SCHOOL SELF-ASSESSMENT FOR
DETERMINING GRADES UNDER THE ANTI-
BULLYING BILL OF RIGHTS ACT**

**CHERRY HILL PUBLIC SCHOOLS (07-0800)
2022-2023 DISTRICT AND SCHOOL GRADE REPORT**



IN ACCORDANCE WITH THE ANTI-BULLYING RIGHTS ACT, EVERY SCHOOL IN THE DISTRICT IS REQUIRED TO CONDUCT A SELF-ASSESSMENT.



THE SELF-ASSESSMENT "GRADES" EACH SCHOOL'S EFFORTS TO IMPLEMENT THE ANTI-BULLYING RIGHTS ACT DURING THE 2022-23 ACADEMIC YEAR.



THE SCHOOL SAFETY TEAM HAS THE LEAD ROLE IN COMPLETING THE SELF-ASSESSMENT, AS PER THE NJ STATUTORY REQUIREMENTS.

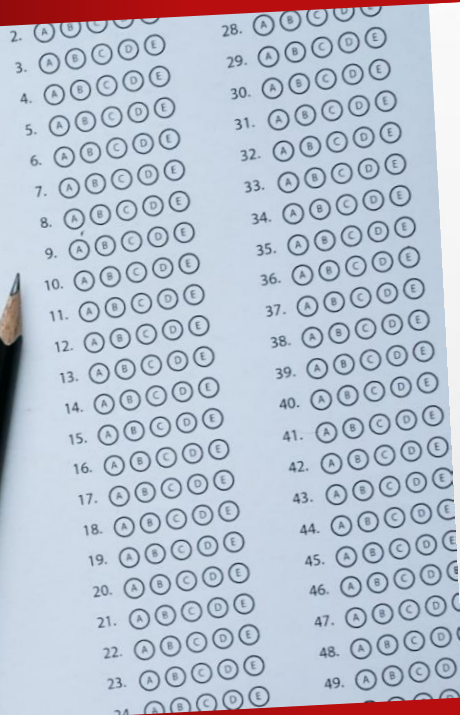


EVERY SCHOOL UTILIZES A SELF-ASSESSMENT TOOL PROVIDED BY THE NEW JERSEY DEPARTMENT OF EDUCATION. THE TOOL CONSISTS OF EIGHT CORE ELEMENTS, 26 TOTAL INDICATORS, AND A SCALE OF 0-3 (0 BEING THE LOWEST AND 3 BEING THE HIGHEST). TOTAL SCORES RANGE FROM A LOW OF 0 TO A HIGH OF 78.



**SCHOOLS MEETING ALL OF THE REQUIREMENTS IN THE LAW, WILL
HAVE AN AVERAGE SCORE OF 52.**


**EVERY SCHOOL IN THE DISTRICT RECEIVED A SCORE HIGHER
THAN 52.**



THE SELF-ASSESSMENT DOES NOT EVALUATE THE NUMBER OR QUALITY OF HIB INVESTIGATIONS.

WE EXPECT SCORES TO FLUCTUATE ON A YEARLY BASIS FOR A VARIETY OF REASONS AND THE GAIN OR LOSS OF POINTS IN A GIVEN YEAR IS NOT AN INDICATOR OF A SCHOOL'S PERFORMANCE.





THIS ITEM IS ON THE ACTION AGENDA, AS THE GRADES MUST BE APPROVED BY THE BOARD OF EDUCATION AND SUBMITTED TO THE NJDOE BY OCTOBER 31, 2023.

ONCE SUBMITTED, THE NJDOE WILL ASSIGN A GRADE TO EACH SCHOOL. THAT INFORMATION MUST BE POSTED ON THE SCHOOL'S WEBSITE AND THE DISTRICT'S WEBSITE.



Primary Schools	School Grade (Max= 78)
A. Russell Knight Elementary School	61
Bret Hart Elementary School	64
Clara Barton Elementary School	63
Estelle V. Malberg Early Childhood Center	60
Horace Mann Elementary School	73
James F. Cooper Elementary School	62
James Johnson Elementary School	62
John A. Carusi Middle School	70
Joseph D. Sharp Elementary School	64
Joyce Kilmer Elementary School	59
Kingston Elementary School	61
Richard Stockton Elementary School	63
Thomas Paine Elementary School	69
Woodcrest Elementary School	67

Secondary Schools	School Grade (Max= 78)
CHHS Alternative	64
CHHS East	70
CHHS West	65
Henry C. Beck Middle School	70
John A. Carusi Middle School	70
Rosa International Middle School	62

22-23 District Grade = 65