

Cherry Hill

PUBLIC SCHOOLS

- ***Kingston Elementary School***
- ***Horace Mann Elementary School***
- ***Woodcrest Elementary School***

Kingston Elementary School



Built: 1955

Additions: 1958, 1962

Grades: K-5

Enrollment: 392

BUILDING IMPROVEMENTS

*Last 2
Years*

- Soffit & Fascia Replacement
- Roof Leak Repairs

*Current
Work*

- New Exterior Doors
- Roof Leak Repairs
- Main Entrance Security Cameras

BUILDING IMPROVEMENTS



- Security Suite – Security Vestibule, Interior/Exterior Cameras, Door Entry System, Main Office Alterations
- New Multi-Purpose Room (4855 sq. ft.)
- Reconfigure Current APR (2354 sq. ft.)
- Toilet Room Alterations -Classrooms, Hallway & Faculty
- HVAC
- Small Group Instruction Renovations
- Roof Replacement
- Interior Doors & Locks
- Site Accessibility Improvements
- Student drop-off / Increase Parking

CURRENT CONDITIONS



CURRENT CONDITIONS



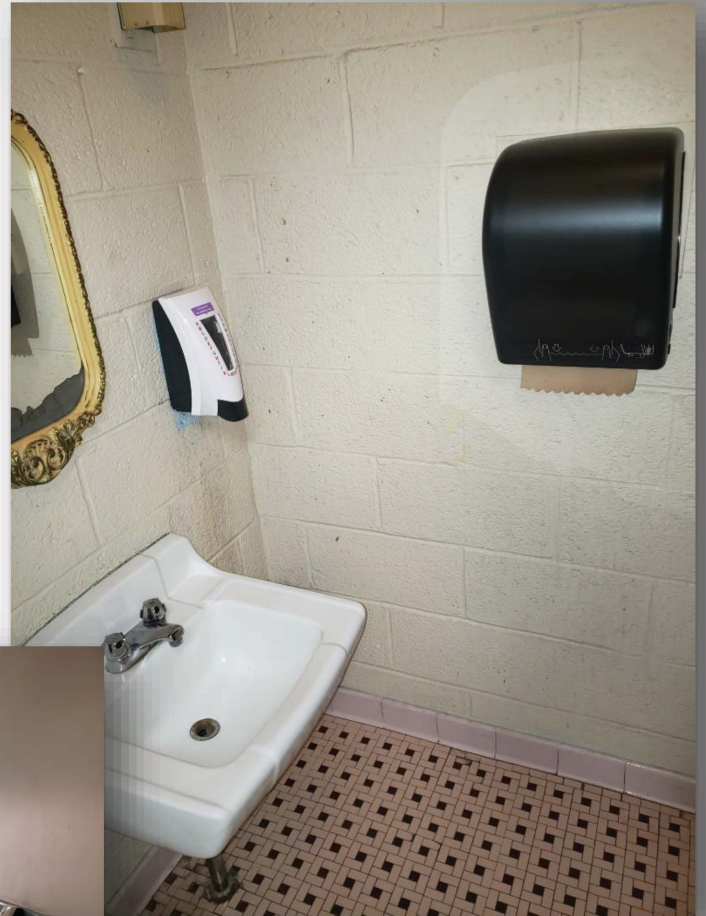
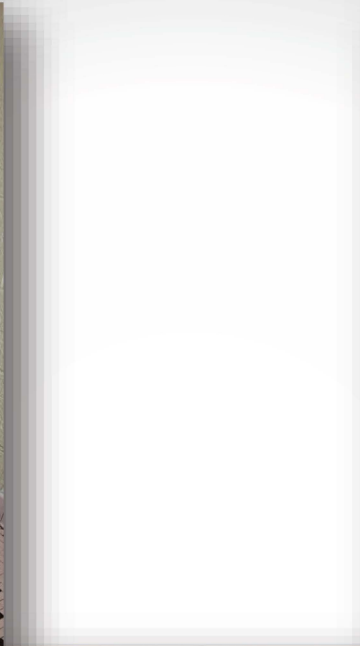
CURRENT CONDITIONS



CURRENT CONDITIONS



CURRENT CONDITIONS



CURRENT CONDITIONS



CURRENT CONDITIONS



Mann Elementary School



Built: 1962

Additions: 1994, 2000

Grades: K-5

Enrollment: 259

BUILDING IMPROVEMENTS

*Last 2
Years*

- Fascia work
- Roof Leak Repairs

*Current
Work*

- New Roof
- New exterior door
- Main Entrance Security Cameras
- Playground area paving

BUILDING IMPROVEMENTS



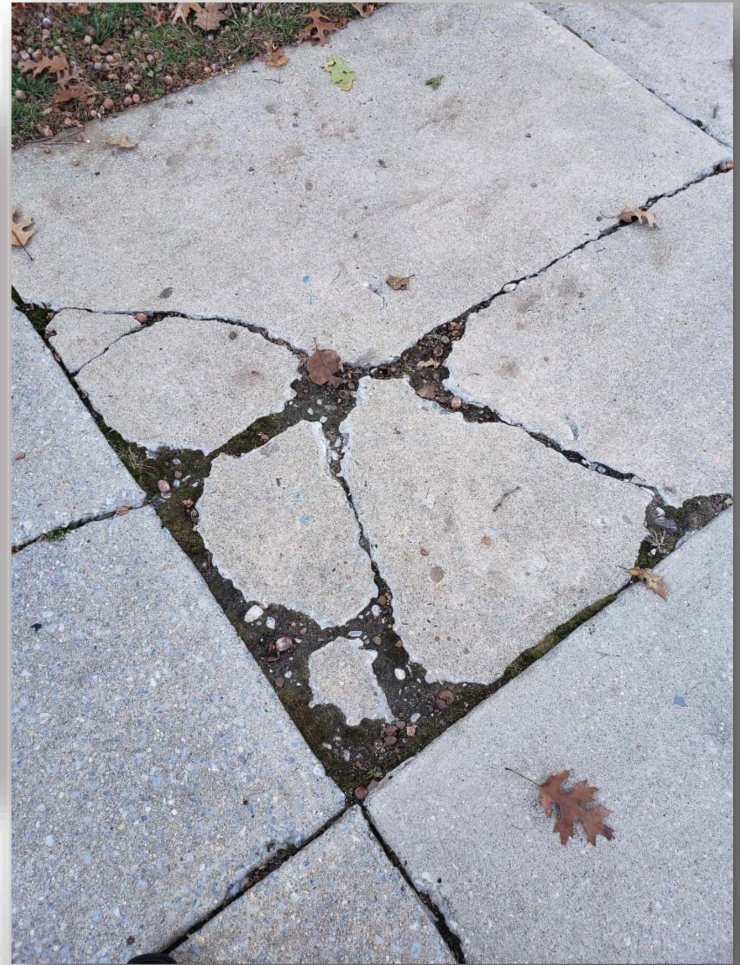
*Future
Needs*

- **Security Suite – Security Vestibule, Interior/ Exterior Cameras, Door Entry System, Main Office Alterations**
- **Expand Parking – curbs, sidewalks**
- **Generator**
- **Accessibility / front entrance**
- **Toilet Room Alterations – Classrooms & Faculty**
- **New Multi-Purpose Room (4855 SF)**
- **Reconfigure Current APR (2345 SF)**
- **Small Group Instruction**
- **Interior Doors & Locks**
- **HVAC Replacement**

CURRENT CONDITIONS



CURRENT CONDITIONS



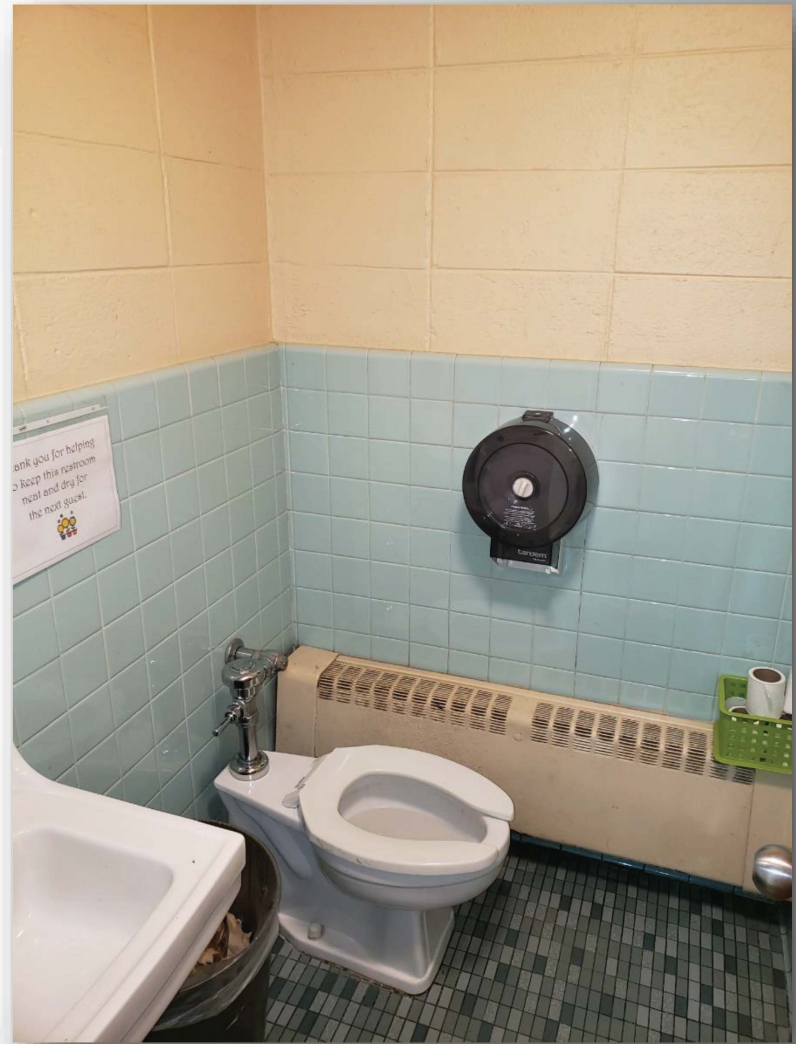
CURRENT CONDITIONS



CURRENT CONDITIONS



CURRENT CONDITIONS



Woodcrest Elementary School



Built: 1958

Additions: 1982, 2000

Grades: K-5

Enrollment: 364

BUILDING IMPROVEMENTS

*Last 2
Years*

- Security Suite – Security Vestibule, Interior/ Exterior Cameras, Door Entry System, Main Office Alterations
- Roof Leak Repairs

*Current
Work*

- Roof Leak Repairs
- Window Hardware Replacement
- Exterior Door Replacement

BUILDING IMPROVEMENTS



*Future
Needs*

- **Toilet Room Alterations - Classrooms, Nurse & Faculty**
- **Roof Replacement**
- **HVAC Replacement**
- **Small Group Instruction Room Alterations**
- **Interior Doors & Locks**
- **Wall Repair**
- **Window Replacements**

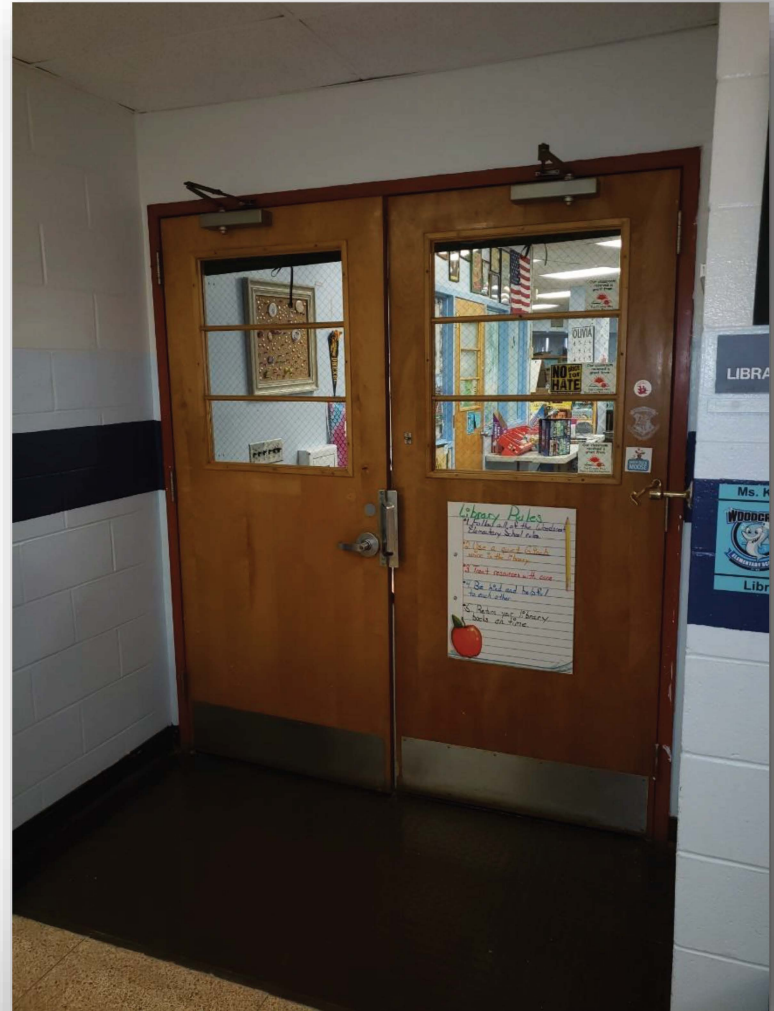
CURRENT CONDITIONS



CURRENT CONDITIONS



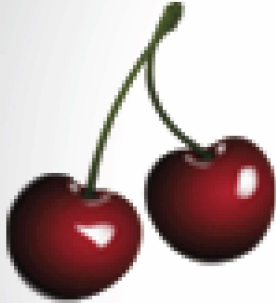
CURRENT CONDITIONS



CURRENT CONDITIONS



CURRENT CONDITIONS



Cherry Hill
PUBLIC SCHOOLS