

The Greenheck Turner Community Center is committed to meeting community needs by providing opportunities for all in the areas of recreation, wellness, athletics, and social activities.



2023/2024
A YEAR IN REVIEW



REC Outdoor Soccer



Topping off ceremony



Group Fitness Classes

FITNESS CENTER MEMBERSHIPS

- 628 memberships
- 200 group fitness members
- 9 instructors & 5 ambassadors
- 5,127 total visits

RECREATIONAL SPORTS

- Summer Season – 852 participants
- Fall Season – 873 participants
- Winter/Spring Season – 925 participants
- Volunteer Coaches – 370



REC Basketball



Open Skate



Adventure Camp

WESTON CONNECT

- 52 kids enrolled in the program
- 80 kids enrolled for 24/25 school year



Construction



Bounce House Fun



Adventure Care

FAMILY PROGRAMMING

BIRTHDAY PARTIES

66 birthday parties

OPEN SKATES

52 open skates

BOUNCE HOUSE NIGHTS

36 Bounce House events

Rock Wall Climbs

33 climbing opportunities

CONSTRUCTION MILESTONES

Last steel beam placed- October 30, 2023

Grand Opening- August 1, 2024

GTCC is used throughout the day by students for physical education classes and athletics. The three gyms, weight room, ice rink, rock wall and classroom space are reserved and used for academic use, practice, and student involvement.



GTCC Staff

COMMUNITY EVENTS

2026

World Horseshoe Tournament



The selection of the Wausau/Weston area as the host city for these championships is a testament to the collaborative efforts of the Greenheck Turner Community Center, Visit Wausau/Central Wisconsin CVB, Weston, Rothschild, Schofield, Kronenwetter, Wausau, Mosinee and Rib Mountain.

ADVENTURE CARE: 6:00 AM-6:00 PM

Before Care: 132 kids between 5 schools (Evergreen, Rothschild, Mt. Bay, Riverside, Hatley)

After Care: 83 kids between 4 schools (Evergreen, Rothschild, Mt. Bay, Riverside)

21 part-time staff

ADVENTURE CAMP

Served 2,847 students, an average of 237 kids each week over 12 weeks with 31 staff.



Bounce House Nights



The Ice Rink continues to be a major part of the Greenheck Turner Community Center footprint. Everest Youth Hockey is the largest renter of ice time. D.C. Everest Hockey, Storm Hockey, Timberline Figure Skating, and various hockey camps consider this their home ice renting hundreds of hours a year.

Youth REC programming continues to be a major part of what GTCC is known for. REC programming partners with high school sports, volunteer coaches and referees, while teaming with various clubs and organizations to make this a success for all involved. Sports offered include: soccer, volleyball, basketball, golf, running, tennis, pickleball, football, and more.



REC Volleyball



GTCC had 14 full-time staff members.



Greenheck Turner Community Center.



Opened August 1, 2024.
135,000 sq. ft.
Greenheck Field House Est.
1997.

Greenheck Turner Community Center
Opened August 1, 2024. 135,000 sq. ft.
Full size soccer field, football field,
lacrosse and softball fields.



Fitness Center Memberships
available for anyone starting at
\$15/month.

Two Sports Simulators. Full Swing golf
simulators rent for \$40/hour and have
many games to play such as soccer,
basketball, softball and carnival games.



FAN STAND Concession
Stand available most after
school evenings and during
special events and
tournaments.

Three basketball court gyms used for
physical education classes, basketball,
volleyball, practice space, family
programming, events and tournaments.



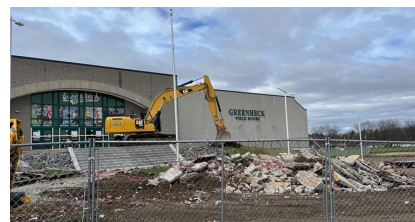
Walking lanes, included with
Fitness Center Membership.
Rubber surface great for low
impact walking. 1/4 mile one
time around.

Olympic Size Ice Rink used for youth
hockey, figure skating, public skates,
adult hockey, and high school athletics.



Four meeting rooms available
to rent for \$25/hour. With
chairs, tables and IT/AV
equipment.

Three different cranes were used to
install steel 15 steel sections of beams
weighing up to 100,000 lbs each.



Construction began in October
of 2022 and was completed in
August of 2024.

Bleacher seating for up to 1100
spectators, plus extra chairs and
flexible seating.



A community building built for
the community by the
community for 36 million
dollars.

The Greenheck Turner Community Center is committed to meeting community needs by providing opportunities for all in the areas of recreation, wellness, athletics, and social activities.