

Leigh School Improvement Plan

A faint, light gray watermark is centered in the background. It features the school's crest, which is a shield with a lion's head, and the words "Leigh School" in a stylized, arched font above it.



Mission and Vision

Our Mission

Inspiring Educational Excellence in a Nurturing Environment.

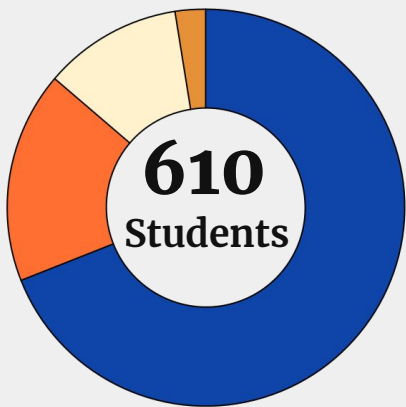
Our Vision

Our students are the focus of all we do at Norridge School District 80. The Student centered classroom will promote an independent, collaborative, and motivated learning environment.

Our Administrators, Teachers, and Staff will set high standards in a safe, nurturing, and positive school environment which will prepare our graduates to take on their future with confidence.

Our Students

BY THE NUMBERS



- White- 69%
- Hispanic- 17.2%
- Asian- 11.3%
- Two or More- 2.5%



44%
Free and Reduced lunch
status



32%
Multilingual Learners



14%
Students with an IEP

Strengths

Providing students opportunities to receive a well-rounded education;

- Daily specials (Art, Music, STEAM, P.E.)
- After school enrichment programs including IAR Prep
- Expanding after school tutoring to include SEB groups
- Second Step curriculum for social emotional learning

Strengths

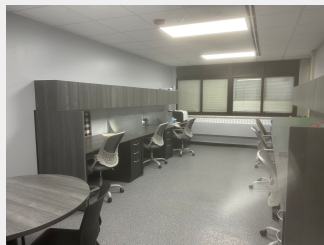
Providing students opportunities to receive a well-rounded education;

- WIN Math group times
- Increased family engagement opportunities
- Summer learning offerings
- Progress in updating our school facilities
- Improvements in school security

Strengths



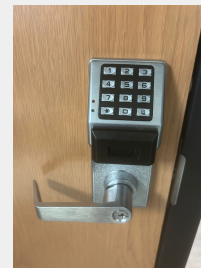
**3 State of the Art
Preschool
Classrooms**



**Co-Teacher Work
Space**



Upgraded Pipe System



**Fob Door
Entries**



New District Office Space



ADA Bathrooms



**Bathrooms in
Student Lunchroom**



**New Furniture and
Paint in K & 4 Grade
Classrooms**

Strengths

What is Tiger Pride?

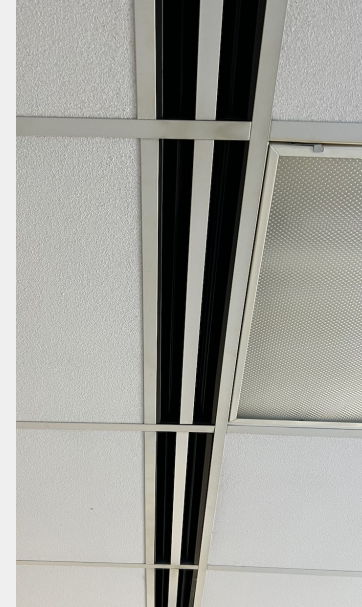
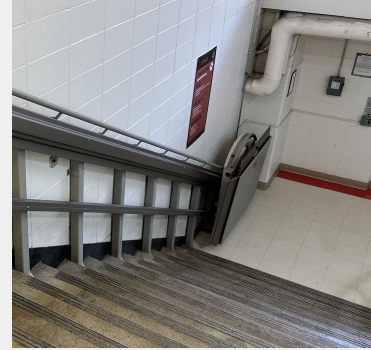
Goal= To create a positive and productive sense of community for the entire Leigh School family- students, families and staff.

- Be safe.
- Be respectful.
- Be responsible.



Challenges...

- Temperature Regulation
- Disability Accessibility
- Plumbing
- Non-functioning Playspace/ Equipment
- Multiple spaces that are still awaiting updates



Academic and Social Emotional Challenges

- Math scores are not growing at the same rate as ELA.
- Shifting to a new program model for multilingual learners.
- Continuing to build our Social Emotional Support Systems



Data Analysis

Table 6: 2nd Grade Math Data

	Fall 17-18	Winter 17-18	Spring 17-18	Fall 18-19	Winter 18-19	Spring 18-19	Fall 19-20	Winter 19-20	Spring 19-20
2nd Grade Math Mean by Instructional Area	177.3	185.2	190.3	176.2	185.2	193.9	177.4	184.9	186.4
Norm	175.04	184.07	189.42	175.04	184.07	189.42	175.04	184.07	184.07
Norm	2.26	1.13	0.88	1.16	1.13	4.48	2.36	0.83	2.33
2nd Grade Math Making Expected Gains		Winter 2016-2017 to Winter 17-18		Winter 17-18 to Winter 18-19		Winter 18-19 to Winter 19-20			
		44%		34%		47%			

Current 3rd
Current 4th
Current 5th
Current 6th

2nd Grade Math Mean by Instructional Area	Norm (based on 2020 Norms)	Overall Mean RIT	At/Below Norm	Operations and Algebraic Thinking	Numbers and Operations	Measurement and Data
Fall 17-18	175.04	177.3	2.26	176.5	178.3	176.3
Winter 17-18	184.07	185.2	1.13	185.2	186.3	184.3
Spring 17-18	189.42	190.3	0.88	190.3	190.5	191.5
Fall 18-19	175.04	176.2	1.16	176.1	175.9	174.5
Winter 18-19	184.07	185.2	1.13	186	185.4	183
Spring 18-19	189.42	193.9	4.48	194.1	192.9	19
Fall 19-20	175.04	177.4	2.36	176	174.5	
Winter 19-20	184.07	184.9	0.83	185.3	183.3	
Winter 20-21	184.07	186.4	2.33	182	185.6	
Spring 20-21	189.42	189.8	0.38	188.1	188.8	
Fall 21-22	175.04	172	-3.04	173	170	

Above the Mean RIT
Below the Mean RIT

Table 1: Student Attendance and Demographic Information

	17-18 SY	18-19 SY	19-20 SY	20-21 SY
	%	%	%	%
Attendance	95.6	95.7	96.6	97.6
Chronic Absenteeism	7	7	3	2
Mobility Rate	3	4	2	3
White	75.6	74.2	72.2	69.5
Black	0.3	0.3	0.2	0
Hispanic	16.6	17.1	16.8	19.1
Asian	6.7	6.9	9	9.5
American Indian	0.3	0.5	0.2	0
Two or More	0.5	1	1.7	1.8

Table 2: Student Enrollment Data

	17-18 SY	18-19 SY	19-20 SY	20-21 SY
	#	#	#	#
School Population	614	609	543	545
Pre-school	19	24	14	22
Kindergarten	102	102	95	99
Grade 1	120	108	96	96
Grade 2	111	120	108	99
Grade 3	138	115	118	109
Grade 4	124	140	112	120

Table 3: Student Demographics Receiving ELL Services

	#	%	#	%	#	%
Total Enrollment	614		609		543	
Total English Language Limited (ELL)	129	21	146	24	130	2
Spanish	14	11	17	12.32%	13	10
Polish	60	47	65	47.10%	16	1
Ukrainian	23	18	17	12.32%	60	49.18%

Table 10: 3rd Grade MAP-Reading Data

3rd Grade Reading Mean RIT	Fall 17-18	Winter 17-18	Spring 17-18	Fall 18-19	Winter 18-19	Spring 18-19	Fall 19-20	Winter 19-20	Spring 19-20	Fall 20-21	Winter 20-21	Spring 20-21
School	190.9	197.4	201.9	186.5	195.1	200	194.7	199.7	198.1	197.12	197.12	203
Norm	186.62	193.9	197.12	186.62	193.9	197.12	186.62	193.9	193.9	193.9	193.9	197.12
+/- Norm	4.28	3.5	4.78	-0.12	1.2	2.88	8.08	5.8	4.2	5.88		
3rd Grade Reading Making Expected Gains		Winter 2016-2017 to Winter 17-18		Winter 17-18 to Winter 18-19		Winter 18-19 to Winter 19-20		Winter 19-20 to Winter 20-21				
		46%		43%		68%		47%				

Current 3rd
Current 4th
Current 5th
Current 6th

3rd Grade Reading Mean by Instructional Area	Norm (based on 2020 Norms)	Overall Mean RIT	At/Below Norm	Literary Text Key Ideas and Details	Literary Text Language, Craft and Structure	Informational Text: Key Ideas and Details	Information Text: Language, Craft and Structure	Vocabulary: Acquisition and Use
Fall 17-18	186.62	190.9	4.28	192	190.7	191.7	189.3	190.9
Winter 17-18	193.9	197.4	3.5	197.9	196.7	198.4	196.5	198
Spring 17-18	197.12	201.9	4.78	202.3	200.7	201.5	202.7	202.8
Fall 18-19	186.62	186.5	-0.12	187	185.6	186.4	186	187.7
Winter 18-19	193.9	195.1	1.2	196	193.7	194.7	195	196.1
Spring 18-19	197.12	200	2.88	200.5	198.2	199.2	200.6	201.1
Fall 19-20	186.62	194.7	8.08	196.3	191.8	195.3	195.8	194.1
Winter 19-20	193.9	199.7	5.8	201.1	198.7	199.2	199.9	199.7
Winter 20-21	193.9	198.1	4.2	200.1	196.9	198.6	199.1	195.6
Spring 20-21	197.12	203	5.88	203.7	201.5	203.6	204.2	202.6
Fall 21-22 **	186.62	187.8	1.18	187		188		188

** NWEA adjusted from a 5 instructional area focus to a 3 instructional area focus in July 2021

Above the Mean RIT
Below the Mean RIT

Problem Statements

Problem Statement 1

Over a three year period, we have averaged 54% of our students making expected gains in Math.

In our most recent iReady Math data, 64% of our students made expected gains.

Problem Statement 2

Over a three year period, we have averaged 56% of our students making expected gains in Reading.

In our most recent iReady Reading data, 68% of our students made expected gains.

Problem Statement 3

In the fall of 2023, 13% of students were flagged as having some or more risk on the Social, Academic and Emotional Behavior Risk Screener. We have been assessing our school systems based on the Tiered Fidelity Inventory. In the spring of 2024, Leigh scored a 48% on the PBIS Tiered Fidelity Inventory.



Goal 1: Math

70% of our students will make their individualized growth goal based on iReady Math data.



Goal 2: ELA

70% of our students will make their individualized growth goal based on iReady Reading data.



Goal 3: SEB

Based on the PBIS Tiered Fidelity Inventory, Leigh is currently at 48% of implementation. By the end of the school year 2024-2025, this will improve by 10%.

WITHOUT GOALS, AND
plans to reach them,
YOU ARE LIKE A SHIP
THAT HAS SET SAIL
WITH *no destination.*

01
PLC/Teamwork



02
Engagement



03
Professional Development



04
Flexible Grouping



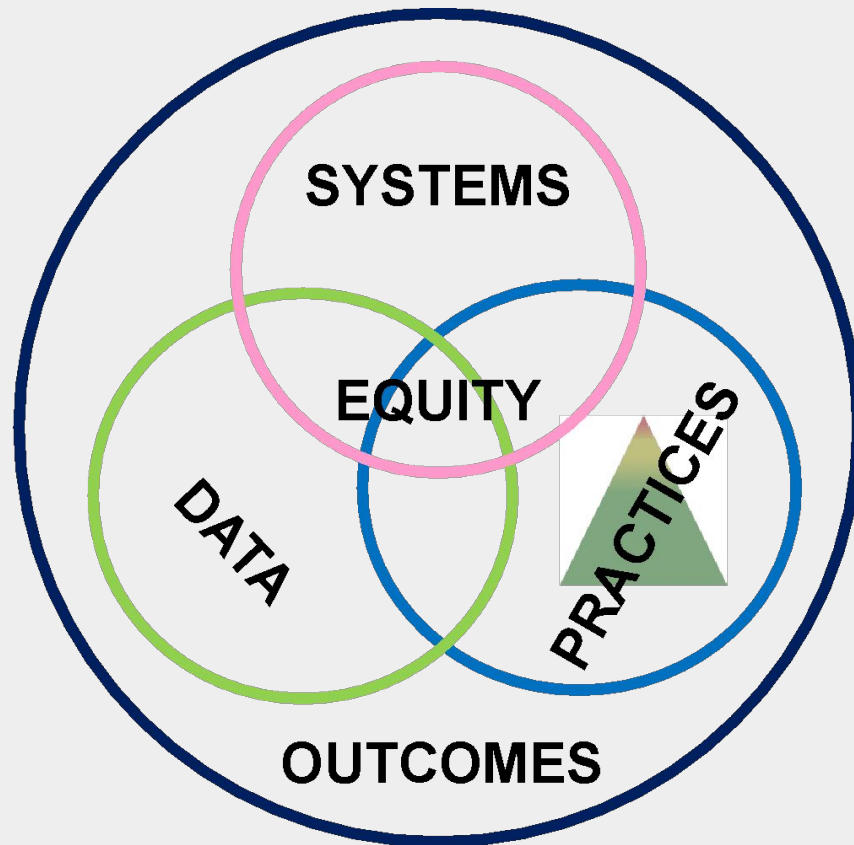
05
Goal Setting



06
Multilingual Learners



Refining our PBIS System



Monitoring our plan

An ongoing agenda item at each of our building level leadership team meetings will focus around our school improvement plan and updating the status of our action items. This will help to ensure collective accountability.

“Without continual growth and progress, such words as improvement, achievement and success have no meaning.”

— Benjamin Franklin”