

# CHAPARRAL HIGH SCHOOL 2023-2024

*school profile*

CHAPARRAL HIGH SCHOOL - Located in the heart of Temecula Valley. One hour from San Diego, Los Angeles, Orange County and Palm Springs. What could be more perfect? Over the past three decades, the City of Temecula has evolved into an innovative, dynamic city and a regional economic center for Southwest Riverside County, all while retaining its small town feel and character. The population in 1990 was 27,099. The latest estimated population data shows Temecula with a population of 110,846 in 2023. Education levels are high in Temecula Valley with over 70% of the population having some college education. 30% of Temecula's residents hold undergraduate degrees or higher. One of three comprehensive high schools in the district, Chaparral High School serves just over 3,000 students.

## SCHOOL ENVIRONMENT (2023-2024)



**623** 2023 Graduates    
 **121** Teachers    
 **3082** Enrollment  
**AP 1342** 2023 AP Exams    
 **633** 2023 AP Students    
 **6** CTE Pathways  
**31** 2023 AP Capstone Diplomas    
 **58** Sports Teams    
 **88** Clubs



Nationally recognized performing and visual arts.



Innovative career and technical electives



Modern Languages offered at the AP level.

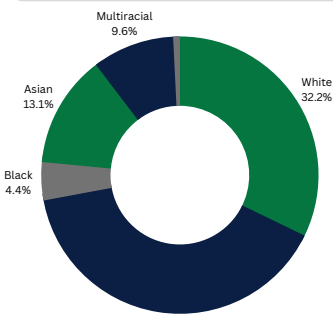


Decorated Navy JROTC program.

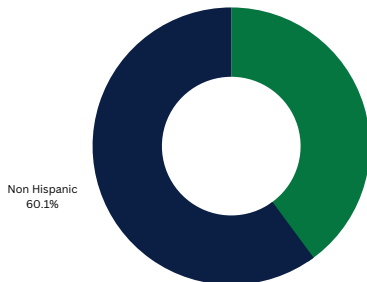


58 varsity and JV athletic teams in 21 sports

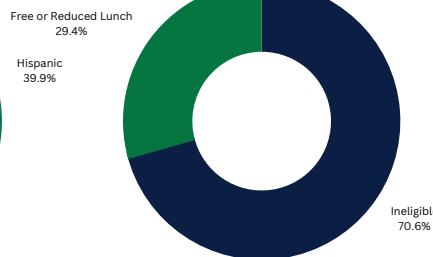
## ENROLLMENT DEMOGRAPHICS (2023-2024)



DIVERSITY

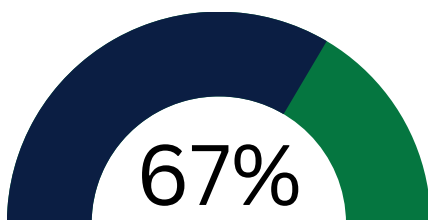


ETHNICITY

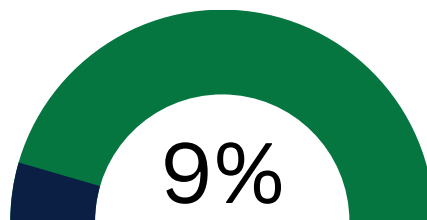


FREE/REDUCED LUNCH

## POST SECONDARY MATRICULATION (CLASS OF 2023)



HEADED OFF TO A 2 OR 4 YEAR COLLEGE



HEADED INTO THE MILITARY



*Home of the*  
**PUMAS**

*Established*  
1997

Grades 9-12

### ADMINISTRATION

Tina Miller  
PRINCIPAL

Ingrid Taylor  
ASSISTANT PRINCIPAL

Chris Morel  
ASSISTANT PRINCIPAL

Anissa Sequeira, Ed.D.  
ASSISTANT PRINCIPAL

Tim Lucore  
ASSISTANT PRINCIPAL  
ATHLETIC DIRECTOR



TEMECULA VALLEY  
UNIFIED SCHOOL DISTRICT

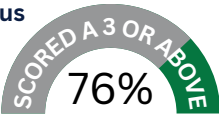
Chaparral High School  
27215 Nicolas Road  
Temecula, CA 92591

951-695-4200  
[www.tvusd.k12.ca.us/chs](http://www.tvusd.k12.ca.us/chs)

CEEB 053539

## 27 AP CLASSES OFFERED

- English Literature
- English Language
- Calculus A/B
- Calculus B/C
- Precalculus
- Statistics
- Physics 1
- Physics 2
- Chemistry
- Biology
- Environmental Science
- Human Geography
- U.S. History
- World History
- U.S. Gov. & Politics
- Comparative Gov.
- Macroeconomics
- Microeconomics
- Psychology
- Computer Science A
- Comp Sci Principles
- Spanish Language
- AP Seminar
- AP Research
- Drawing
- 2D Art and Design
- Art History



## SCHEDULES

Chaparral's academic program has a traditional schedule consisting of 6 periods lasting 52 minutes each. Students do have the option to flex their schedule and can do 2 online classes as either part of their 6 classes or in addition to their 6 classes. Students also participate in a 30-minute advisement period four days a week. Every Wednesday, students have "early out," when the schedule is adjusted to allow teachers to participate in professional development after students leave. The school calendar typically has students begin the school year in mid-August, and the school year will end at the beginning of June. There are two 18-week semesters.

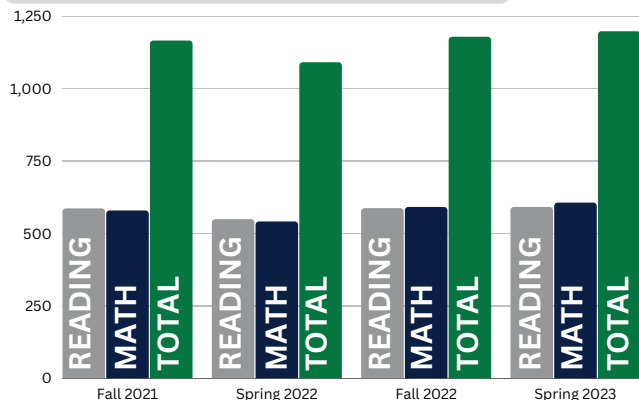
## 220 CREDITS NEEDED TO GRADUATE

**CREDITS:** Students are awarded 5 credits for each class they successfully complete at the end of each semester. To be successful, students must earn a "C-" or better. TVUSD removed "D" grades in 1998-99, so only grades at 70% or higher will receive credit. Each student has the opportunity to earn 30 credits each semester for a total of 60 credits at the end of each school year. In order to graduate from CHS, a student must earn 220 credits, and complete 40 hours of community service. The graduation requirements totaling 220 credits must be in the following academic areas:

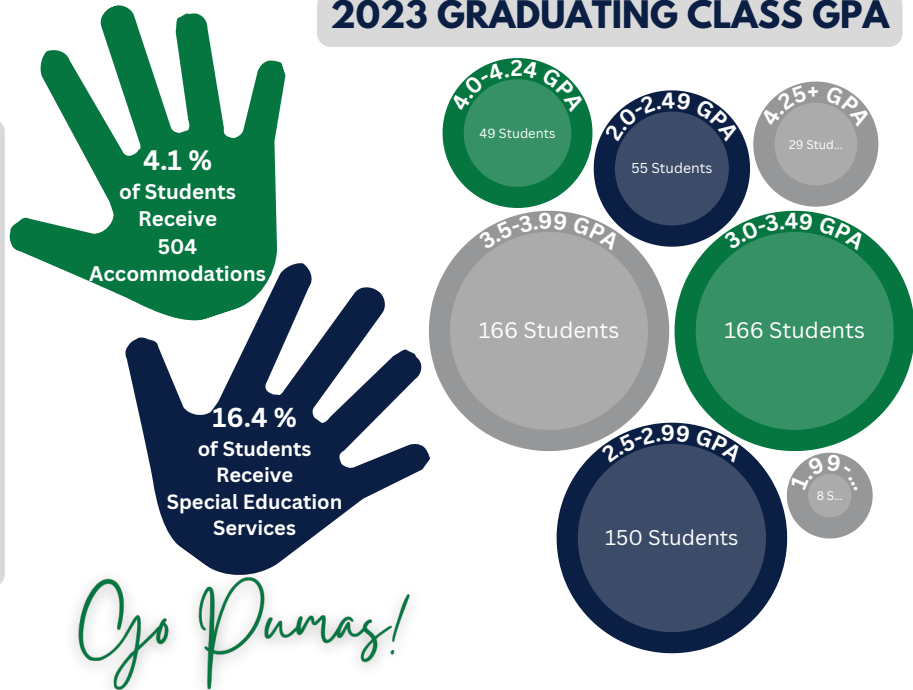
- 40 Credits - English
- 30 Credits - Math
- 10 Credits - Life Science
- 10 Credits - Physical Science
- 20 Credits - Physical Education
- 10 Credits - Fine Arts
- 10 Credits - World History
- 10 Credits - US History
- 5 Credits - Economics
- 5 Credits - Government
- 70 Credits - Electives

**COVID ADDENDUM** - On July 1, 2021, Governor Newsom signed Assembly Bill 104 (and amended by AB 167), which states that students may request a grade change for any letter grade earned during the 2020-2021 COVID school year to Pass or No Pass if the change doesn't negatively impact their GPA. All California public universities and some California private colleges have agreed to accept such transcripts for admission purposes. AB104/167 also permits parents of eligible students to request retention in the student's 2020-2021 grade level for the 2021-2022 school year. In addition, the TVUSD school board suspended the community service requirement for the Class of 2022.

## CHS AVERAGE SAT SCORES



## 2023 GRADUATING CLASS GPA



## COLLEGES ATTENDED BY CHS STUDENTS THE LAST 5 YEARS

- |                                      |                                       |                                    |  |
|--------------------------------------|---------------------------------------|------------------------------------|--|
| Alabama A&M University               | Columbia University                   | Ohio State University              | University of Colorado, Boulder          |
| Albany State University              | Concordia University                  | Oklahoma Baptist University        | University of Colorado, Colorado Springs |
| Alliance University                  | Dakota State University               | Old Dominion University            | University of Colorado, Denver           |
| Arizona State University             | Dallas Baptist University             | Oregon Institute of Technology     | University of Delaware                   |
| Auburn University                    | DePaul University                     | Oregon State                       | University of Georgia                    |
| Austin Peay State University         | DeVry University                      | Ottawa University                  | University of Hawaii at Manoa            |
| Barry University                     | Dominican University of California    | Pace University, NY                | University of Houston                    |
| Boise State University               | Drexel University                     | Pepperdine University              | University of La Verne                   |
| Boston University                    | Duke University                       | Pittsburg State University         | University of Massachusetts - Amherst    |
| Brigham Young University             | Eastern Washington University         | Presentation College               | University of Mary Washington            |
| Brown University                     | Emerson College                       | Reinhardt University               | University of Mississippi                |
| California Baptist University        | Fashion Institute of Technology       | Rutgers University                 | University of Montana                    |
| California Institute of Technology   | Florida State University              | Scripps College                    | University of Montevallo                 |
| California Institute of the Arts     | Fullerton College                     | Seattle University                 | University of Nevada, Reno               |
| California Lutheran University       | Georgia State University              | Seton Hall University              | University of New Mexico                 |
| Carnegie Mellon University           | Graceland University                  | Siena College                      | University of North Dakota               |
| Cal Poly Humboldt                    | Grambling State University            | Southern Oregon University         | University of Notre Dame                 |
| Cal Poly Pomona                      | Grand Canyon University               | Southern Utah University           | University of Pennsylvania               |
| Cal Poly San Luis Obispo             | Gwynedd Mercy University              | Southern Virginia University       | University of San Diego                  |
| Central Connecticut State University | Hampton University                    | Stanford University                | University of San Francisco              |
| Central Washington University        | Harvard University                    | Stephen F Austin State University  | University of South Carolina             |
| Clemson University                   | Harvey Mudd College                   | Suffolk University                 | University of Southern California        |
| CSU Bakersfield                      | Hiram College                         | SUNY Stony Brook                   | University of Tennessee                  |
| CSU Channel Islands                  | Howard University                     | Syracuse University                | University of the Pacific                |
| CSU Chico                            | Idaho State University                | Texas A&M University               | University of Utah                       |
| CSU Dominguez Hills                  | Indiana University                    | Texas Christian University         | University of Vermont                    |
| CSU Fresno                           | John Paul the Great Catholic Uni      | Texas State University             | University of Wisconsin                  |
| CSU Fullerton                        | Johnson & Wales University            | Texas Tech University              | U.S. Air Force Academy                   |
| CSU Humboldt State University        | Kent State University                 | The College of Saint Rose          | U.S. Naval Academy                       |
| CSU Long Beach                       | Lake Erie College                     | Tulane University                  | Utah State University                    |
| CSU Los Angeles                      | Lee University                        | Tuskegee University                | Utah Tech University                     |
| CSU Monterey Bay                     | Loyola Marymount University           | University of Alabama              | Utah Valley University                   |
| CSU Northridge                       | Massachusetts Institute of Technology | University of Alaska, Fairbanks    | Vanguard University                      |
| CSU Sacramento                       | Michigan State University             | University of Arkansas             | Virginia Tech University                 |
| CSU San Bernardino                   | Missouri State University             | University of Arizona              | Virginia Wesleyan University             |
| CSU San Diego State University       | Mount Saint Mary's University, LA     | University of California, Berkeley | Washington & Lee University              |
| CSU San Francisco State              | New Mexico Military Institute         | University of California, Davis    | Weber State University                   |
| CSU San Jose State                   | New York University                   | University of California, Irvine   | Westcliff University                     |
| CSU San Marcos                       | Norfolk State University              | Univ. of California, Los Angeles   | Western Kentucky University              |
| CSU Sonoma State                     | Northern Arizona University           | Univ. of California, Merced        | Western Oregon University                |
| Central Methodist University         | Northern Vermont University           | Univ. of California, Riverside     | Westminster College                      |
| Central Washington University        | Northeastern University               | Univ. of California, Santa Diego   | Westmont College                         |
| Chapman University                   | Northwest Florida State College       | Univ. of California, Santa Barbara | Wheaton College                          |
| Colgate University                   | Norwich University                    | Univ. of California, Santa Cruz    | Whitman College                          |
| Colorado State University            | New York University                   | Univ. of Central Florida           | William Penn University                  |
|                                      |                                       |                                    | Woodbury University                      |