



We are grateful for support from TPSD, MAC, and our community!

Check us out!

[www.tupeloschools.com](http://www.tupeloschools.com)

@tupeloschools

@ThomasStTPSD

@joynerTPSD

## Mississippi Whole Schools

Vision: Arts-based school communities that fuel transformative education for every student.

(A program of the MS Arts Commission)



**MISSISSIPPI**  
ARTS COMMISSION



# Teaching through the Arts

Thomas Street and Joyner Elementary Schools

[www.tupeloschools.com](http://www.tupeloschools.com)

We are Model Schools



Visit [mswholeschools.org](http://mswholeschools.org) to learn more!

### SOCIAL MEDIA



mswholeschools



mswholeschools

## What is Whole Schools?

MS Whole Schools, a program of the Mississippi Arts Commission, is Mississippi's first comprehensive statewide arts education program, which uses the arts as a vehicle for promoting high-quality instruction and learning for students in all disciplines.

There are three levels to the program: Arts in the Classroom (one year "try-out" experience); Mississippi Whole Schools (eight year commitment); Model School (two year award, renewable).

### ARTS IN THE CLASSROOM

This program is designed to primarily provide professional development for teachers and administrators of preK-12 schools in the foundations of arts integration as a teaching tool to enhance teaching skills and improve student achievement through the infusion of the arts into the basic curriculum.

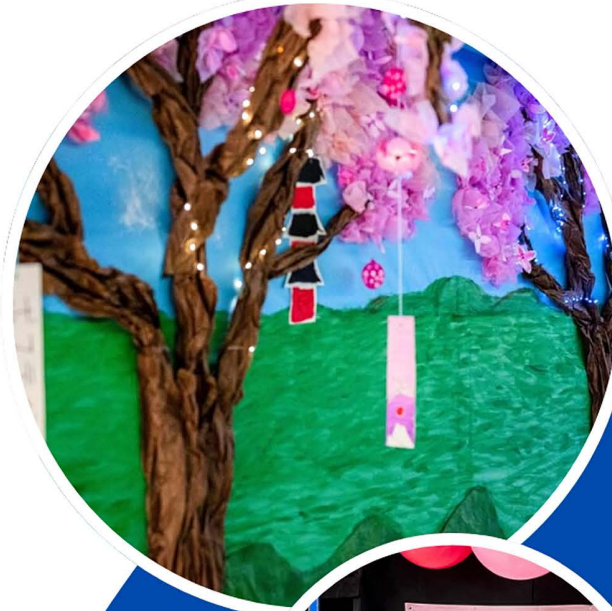
### WHOLE SCHOOLS

This program is open to K-12 schools that uses the arts as a vehicle for promoting high-quality instruction and learning for students. The program is founded on effective research-based methods and strategies. Participants in Mississippi Whole Schools are supported through grant funds, professional development and technical assistance for up to six years.

### MODEL SCHOOLS

Schools that have committed to arts integration and changed their school's culture through the arts are invited to apply as a Model Whole School. To apply, schools must have completed at least three years in Mississippi Whole Schools.

## Thomas Street Elementary celebrates being a Model School for over 15 years!



## Joyner Elementary

Joyner is celebrating becoming a model school in 2022!

- All of the Tupelo Public School District schools are affiliated with Mississippi Whole Schools Arts Integration Program in one of the three levels described.