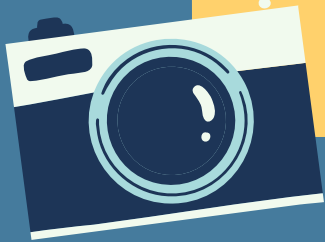




# LHS Germany Exchange 2025

Informational Meeting #1  
10/9/24 @ LHS LMC







# Introductions


## Please Sign In!






 Meet 

[Generate link](#)

Class code 

**wb3m35j** 








# wb3m35j

Germany Exchange 2024-2025

 [Copy invite link](#) 

# Our Partner School

- Schwalmgymnasium (school)
  - Schwalmstadt, Germany
    - 1.5 hr from Frankfurt
      - Since 2008
  - Duration of exchange: 3 weeks
  - GAPP exchange
  -









## LHS German Exchange

possible cities to visit based on past year itineraries

Last edit was seconds ago



Add layer



Share



Preview



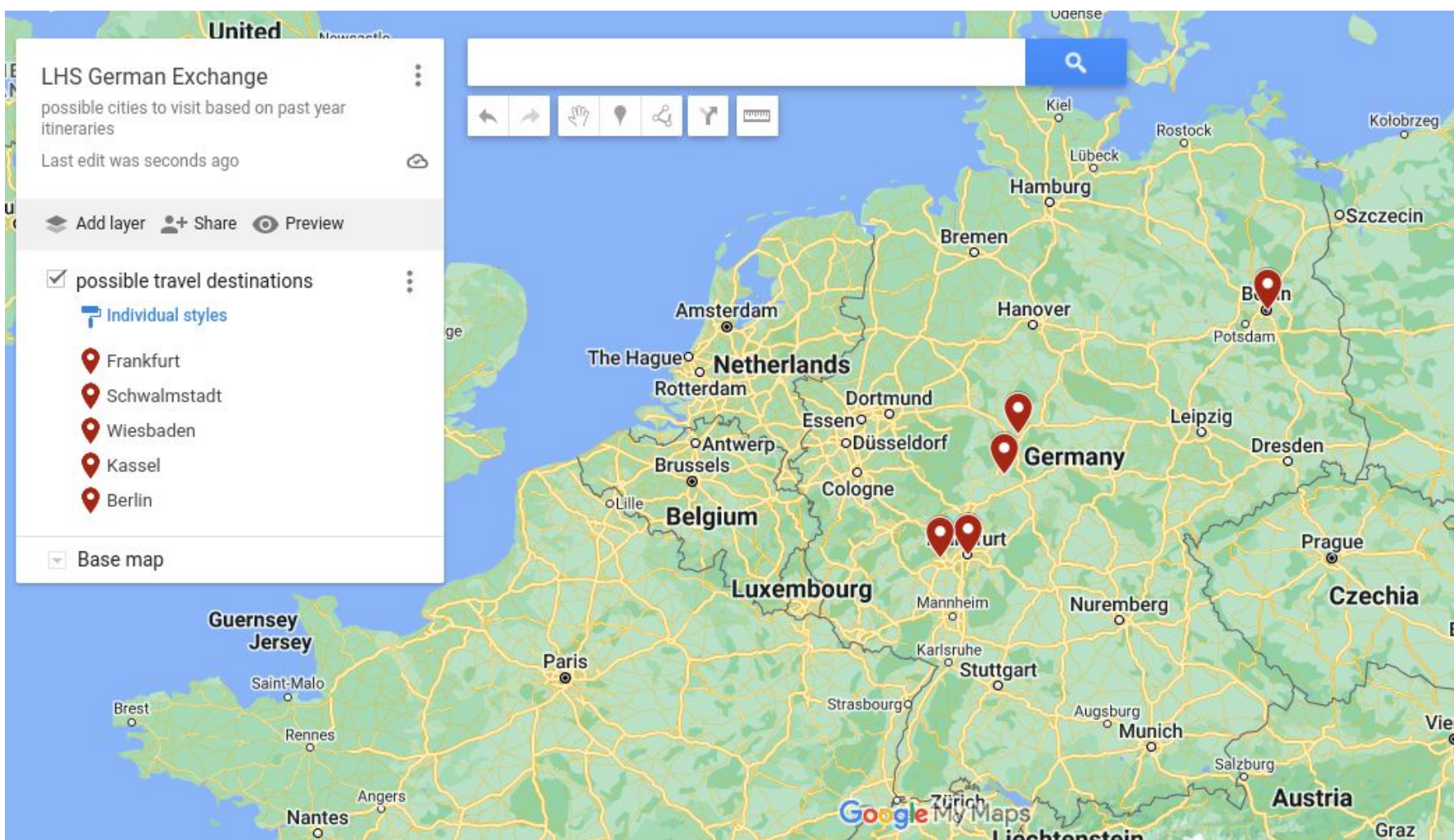
possible travel destinations

Individual styles

- Frankfurt
- Schwalmstadt
- Wiesbaden
- Kassel
- Berlin



Base map



# Our Partners!

- 15 students
- 12 girls, 3 boys
- 6 yrs. English instruction
- Ages: 16-18



# 15 German students coming to Lodi! April 24 - May













# Hosting 4/24 - 5/12



Your guest will live with your family and experience U.S. American culture first hand!

They must have their own room in your home. This expectation is the same when we go to Germany.

They will either come to LHS or attend planned excursions with the other exchange students. Possible excursions: Madison capitol, Camp Randall, Milwaukee Museum, Devil's Lake, Cave of the Mounds

You would choose two "buddies" who could share hosting responsibilities for times when you might be unavailable (sports/ extra-curriculars)











# Travel 10/17-11/7

You will stay with a German host family for the first 2.5 weeks. Then the LHS group will travel (without German hosts) by train to Berlin!

While with the host family you will learn about German language and culture, take regional excursions, and attend school.

There is no expectation that you have any German proficiency prior to departure, however, Mrs. Gleiss has taught German for 10 years and will help you learn the basics before we take off!

# Visiting Berlin

Berlin Wall  
East Side Gallery



Tour of Berlin



Berlin TV tower



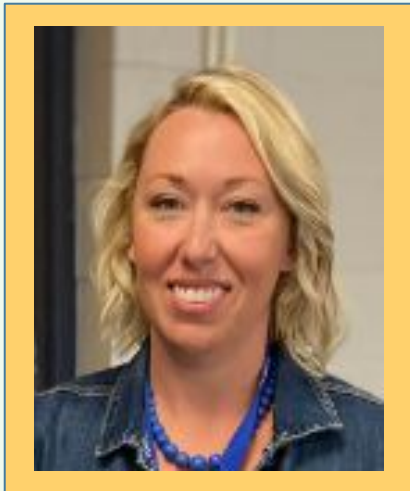
# Program coordinators



Mrs. Sarah Gleiss

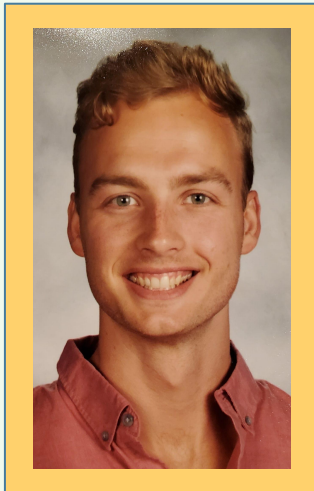
8th grade Math/English/ELT

6 previous German exchanges



Mr. Mason Kittleson

LHS Social Studies



Frau Sabine Sachs

English & German





# Dates of Exchange

German Guests in Lodi  
(LHS families **host**)

**April 24 - May 12 2025**

LHS students **travel** to Germany  
(German families host)

**October 17- November 7 2025**

## FAQs

1. “Can I host and not travel?  
Can I travel and not host?”

Short answer is, “Yes.” However, the intent is that it is a cultural exchange. The experience is enriched on both sides if hospitality is reciprocated at home and abroad.

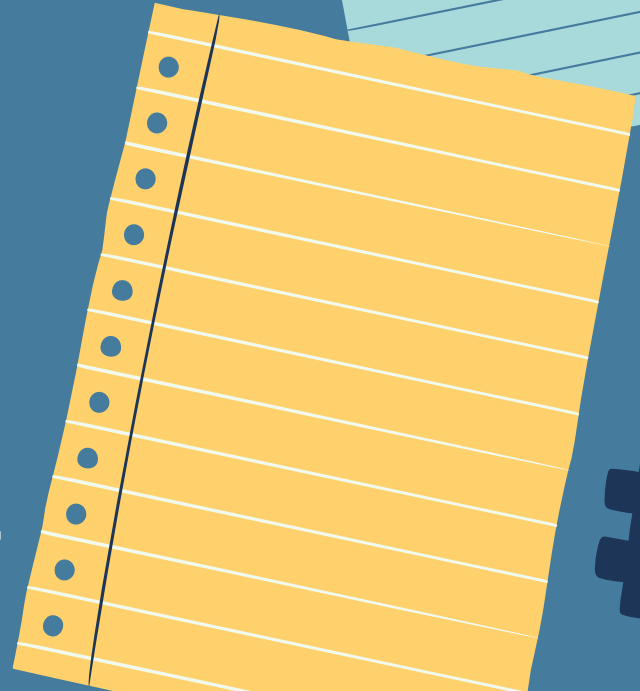


# FAQs

## 2. "What does it cost to HOST?"

This varies greatly from family to family. You are expected to treat your guest when doing outings, dining, all meals at school and generally whenever a parent would pay for their own child.

It is essentially the cost of another child in the home for three weeks.



# FAQs

## 3. "What does it cost to TRAVEL?"

The will vary depending on fuel cost at time of ticket purchase. The goal is to keep it under \$2,000.00

We stay with host families for the majority of the trip but do stay in hostels/hotels for the Berlin portion of the trip.

Scholarships/stipends are available through GAPP and fundraising (2) may be organized.





## FAQs

### 4. "Who may participate?"

To host: (dates April 24 - May 12)

- LHS students; **grades 9-12**

To travel: (dates October 17 - Nov. 7)

- LHS students; **grades 10-12**



# FAQs

## 4. "Who may participate?" (cont.)

- Must be in good academic standing
- LHS faculty supports your participation
- Committed to being an excellent host
- Available to participate fully in the exchange
- Interested in learning about another language and culture
- Open minded and flexible





# Questions Answered!

1. **“Will students be expected to do all of their school work in advance?”**

Students traveling to Germany in the fall will be enrolled in a class called PBL (Project Based Learning) where they will receive language and culture lessons, create presentations to give while abroad, and build relationships with other travelers. They will also have three weeks after the trip during this class to make up missing work.

2. **“Do families pay for the trip all at once?”**

No. The families traveling would pay in three separate installments.

3. **“Do all German students need to stay with a HS family?”**

Our goal will be to place all German students with a LHS family. If need be, we will extend that to all families within the School District of Lodi. We may also place more than one German student per Lodi family when able/possible.



## LHS Exchange Host Family Application

Complete this form if you would like to host an exchange student from an LHS international exchange. (Germany, Thailand, Spain) You may contact the program coordinators JP Fassbender (Thailand) or Sarah Gleiss (Germany) with any questions regarding this application or the hosting process in general.

gleissa@lodischoolswi.org [Switch account](#)



\* Required

Email \*

[Click here to apply to HOST this May!](#)



## Application to Travel Abroad - Germany

Please complete this form if you would like to apply to travel to Germany September 28 - October 19 2023. You will stay for two weeks with a host family from our partner school/city in Schwalmstadt and then travel for a portion of the trip with our LHS group for a total of a three week trip. You may email Mrs. Gleiss ([gleissa@lodischoolswi.org](mailto:gleissa@lodischoolswi.org)) with any questions or concerns during the application process.

 [gleissa@lodischoolswi.org](mailto:gleissa@lodischoolswi.org) (not shared) [Switch account](#)



\* Required

[Click here to apply to TRAVEL next October!](#)