

OUR VISION & WHO WE ARE

Bethel provides **experiential** learning opportunities through community-based instruction for young adults with disabilities, ages 18 – 21, to foster independence in the post-secondary areas of:

- **Employment**
- **Education/Training**
- **Independent Living Skills**

Collaboration takes place with families, caregivers, community partners, state agencies, and employment vendors.

We are committed to **recognizing** each student's **strengths and abilities** while allowing them to make decisions through **self-determination and self-advocacy**.

Students participate in **weekly non-paid** job sites to generalize employment skills in a real world setting with an end goal of obtaining **paid employment**.

Students not yet ready for community work placement will have opportunities in our program to **build skills**.

Schedules are individualized based on student need and program.

FOR MORE INFORMATION CONTACT

Amy Weaver

Director of Special Services
Community Based Programs
aweaver@bethelsd.org
253.800.2387

Christa Johnson

Teacher – Vocational Lab
cjohnson@bethelsd.org

Terrilea Parsons

Teacher – Workability Lab
tlparsons@bethelsd.org

Nep Scheirer

Teacher – Life Skills Center
nscheirer@bethelsd.org

Bethel School District does not discriminate in any programs or activities on the basis of sex, race, creed, religion, color, national origin, age, veteran or military status, sexual orientation, gender expression or identity, disability, or the use of a trained dog guide or service animal and provides equal access to the Boy Scouts and other designated youth groups. The following employees have been designated to handle questions and complaints of alleged discrimination: Civil Rights Compliance / Gender-Inclusive Schools Coordinator, Debbie Carlman, dcarlman@bethelsd.org, 253.800.2019; Title IX Coordinator, Bryan Streleski, bstreleski@bethelsd.org, 253.800.4302; and 504 Coordinator, Melissa Munson-Merritt, mmunsonmer@bethelsd.org, 253.800.2301. All individuals may be reached at this address: 516 176th Street East, Spanaway, WA 98387.

Title IX inquiries may also be directed toward the U.S. Department of Education, Office for Civil Rights (OCR): <https://www2.ed.gov/about/offices/list/ocr/index.html>. Information about the nondiscrimination and sex-based discrimination policies and grievance procedures, and how to report a concern or complaint: [bethelsd.org](https://www.bethelsd.org).

El Distrito Escolar de Bethel no discrimina en sus programas o actividades por motivos de sexo, raza, credo, religión, color, nacionalidad, edad, condición de veterano de guerra o grado militar, orientación sexual, expresión de género o identidad, discapacidad o por el uso de perro guía entrenado o animal de servicio; además ofrece igualdad de acceso a los Boy Scouts y a otros grupos de jóvenes especificados. Los siguientes empleados han sido designados para atender consultas y quejas de supuesta discriminación: Cumplimiento de los Derechos Civiles/Coordinadora Escolar de Inclusión de Género, Debbie Carlman, dcarlman@bethelsd.org, 253.800.2019; Coordinador del Título IX, Bryan Streleski, bstreleski@bethelsd.org, 253.800.4302 y Coordinadora 504, Melissa Munson-Merritt, mmunsonmer@bethelsd.org, 253.800.2301. Todas las personas pueden ser localizadas en esta dirección 516 176th Street East, Spanaway, WA 98387.

Las consultas sobre el Título IX también pueden dirigirse a la Oficina de Derechos Civiles (OCR) del Departamento de Educación de EE.UU.: <https://www2.ed.gov/about/offices/list/ocr/index.html>. Para más información sobre las políticas de no discriminación y discriminación por razón de sexo; los procedimientos de reclamación y sobre cómo comunicar una preocupación o queja visite: www.bethelsd.org.

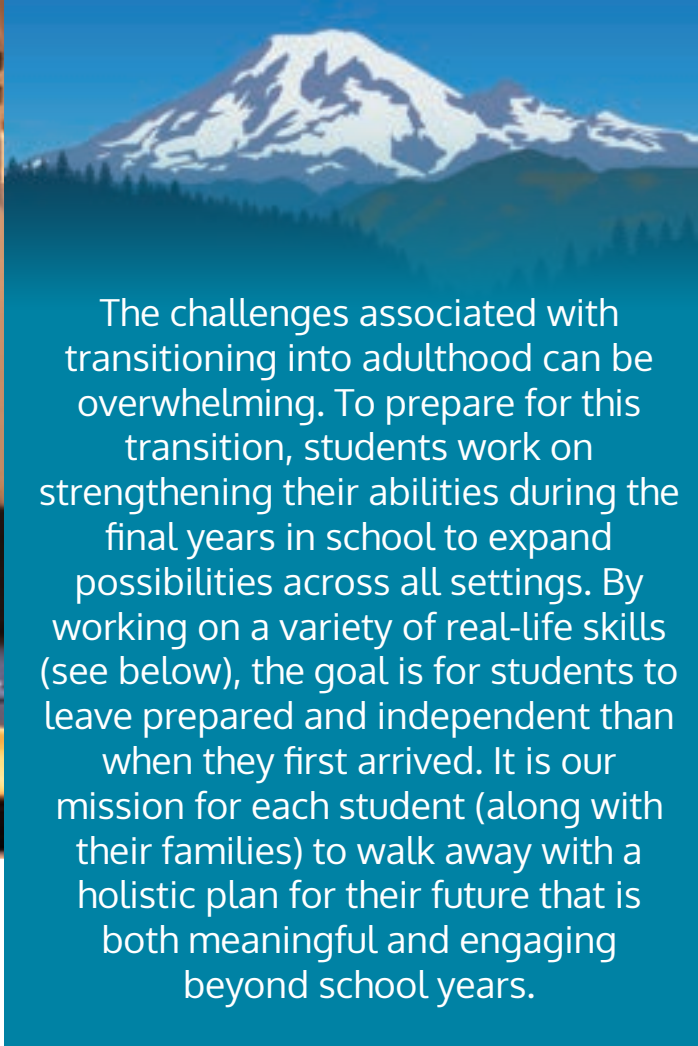


TRANSITION PROGRAM

220 175th Street South
Spanaway, WA 98387



The **Bethel Transition Program** is a Special Education service for students 18 – 21 years of age with disabilities. This program provides participants life skills training, work-based learning skills, and the potential for a job placement prior to graduation.



The challenges associated with transitioning into adulthood can be overwhelming. To prepare for this transition, students work on strengthening their abilities during the final years in school to expand possibilities across all settings. By working on a variety of real-life skills (see below), the goal is for students to leave prepared and independent than when they first arrived. It is our mission for each student (along with their families) to walk away with a holistic plan for their future that is both meaningful and engaging beyond school years.

- LIFE SKILLS**
- VOCATIONAL TRAINING**
- COMMUNICATION SKILLS**
- SELF-AWARENESS & ADVOCACY**
- SOCIAL SKILLS**
- RECREATION & LEISURE SKILLS**
- FUNCTIONAL ACADEMICS**
- PUBLIC TRANSIT TRAINING**

CONSIDERATIONS FOR PROGRAM ENTRY

- Student is connected with DDA Services (if applicable)
- Student has WA State ID
- Meets disability criteria for SSI (apply on or before 18th birthday)
- Acceptance from students and families of non-traditional schedules that are based upon individual student need
- Likely post school outcome of supported employment or needing assistance obtaining a job
- Interest and ability to participate in community based activities
- Completion of required course units for graduation
- Ability and willingness to participate in School to Work Programs