



Founded in 1858 by the Sisters of Saint Joseph, Mount Saint Joseph Academy is a college preparatory, independent Catholic school for 9-12th grade female students, located in suburban Montgomery County, just outside of N.W. Philadelphia. With a focus on academically rigorous programs, the Mount challenges young women to shape the future while empowering them to realize their fullest potential.

BLOCK SCHEDULING

The Mount operates on a "block," or intensive, schedule with the school year divided into two semesters. Students take up to 4 credits per semester for a total of up to 8 credits per academic year, during the traditional school day. Additional credits outside of the school day block schedule are available for limited courses. Completion of a minimum of 7 credits per academic year is required for graduation.

GRADUATION REQUIREMENTS

- Theology (4 credits)
- English (4 credits)
- Mathematics (3 credits)
- Science (3 lab science credits)
- Social Studies (3 credits)
- World Language (3 credits, same language)
- Fine Arts (1 credit)
- Physical Education (1 credit)
- Technology (0.75 credit)
- Health Education (.5 credit)

**120 W. WISSAHICKON AVENUE
FLOURTOWN, PA 19038
215-233-3177
WWW.MSJACAD.ORG**

CEEB CODE: 393390
Total Enrollment: 480
Class of 2025 Enrollment: 108

Lisa Boyle,
Director of College Counseling
215-233-3177 x.308 lboyle@msjacad.org

Mary-Kate Kaminski, College Counselor
215-233-3177 x.210
mkaminski@msjacad.org

Ellen Potter, Administrative Assistant
215-233-3177 x.333
epotter@msjacad.org

DIVERSITY AT THE MOUNT

The Mount is committed to recruiting a diverse student body from the local greater Philadelphia area. Students attending the Mount come from 68 different local zip codes, 5 counties, and 29 school districts with 14.2% of students self-identifying as students of color. 42% of students receive institutional tuition assistance in an ongoing effort to support socioeconomic diversity. Deeply committed to our Catholic identity, the Mount openly welcomes and maintains non-Catholic enrollment.

GRADE EQUIVALENCY CHART

GRADE	QUALITY/ POINT EQUIVALENT	QPE HONORS	QPE APE	NUMERICAL EQUIVALENCY
A	4.0	4.3	4.7	100-94
A-	3.7	4.0	4.3	93-91
B+	3.3	3.7	4.0	90-88
B	3.0	3.3	3.7	87-85
B-	2.7	3.0	3.3	84-82
C+	2.3	2.7	3.0	81-79
C	2.0	2.3	2.7	78-76
C-	1.7	2.0	2.3	75-74
D+	1.3	1.7	2.0	73-72
D	1.0	1.3	1.7	71-70
F	0.0	0.0	0.0	69-

CURRICULUM OPTIONS

Advanced Placement Courses

- Offered to students in grades 10-12 when meeting prerequisites
- Given schedule limitations, Juniors and Seniors have a recommended maximum of 4 AP courses per year
- Sophomore schedules typically allow for a maximum of 1 AP course
- AP exams are required for all enrolled AP students

Honors Courses

- Offered to students in grades 9-12 when meeting prerequisites
- Freshman may enroll in a maximum of 3 honors courses
- Courses offer an in-depth look at and faster-paced approach in specific subjects

College Preparatory Courses

- Provide students with the skills and knowledge imperative for college success
- All courses not otherwise designated are College Preparatory

CURRICULUM FEATURES

- Diocesan Scholars Program: Selective dual enrollment agreement with local Catholic colleges and universities
- Women as Founders Seminar Course: A mission-aligned course with a research project centered around a social issue of personal significance
- Fine Arts Scholars: Selective offering for identified Art, Music and Vocal scholars who complete additional Fine Arts course requirements

GRADE POINT AVERAGE

- The Mount calculates a weighted GPA on a 4.0 scale
- Yearly and cumulative GPAs appear on the transcript below completed coursework
- Not all courses calculated into the GPA, including, but not limited to 9th and 10th grade 0.25-credit rotation courses, and PE/Health courses

CLASS RANK

Mount Saint Joseph Academy does not determine or report rank. The Mount maintains a selective admissions process and rigorous college preparatory program, with a high achieving student body. As such, it is our belief that class rank is not an accurate measure of our students' individual achievement or college potential.

Please note: All listed courses may not run each year based on number of course requests and staffing.

Honors Courses:

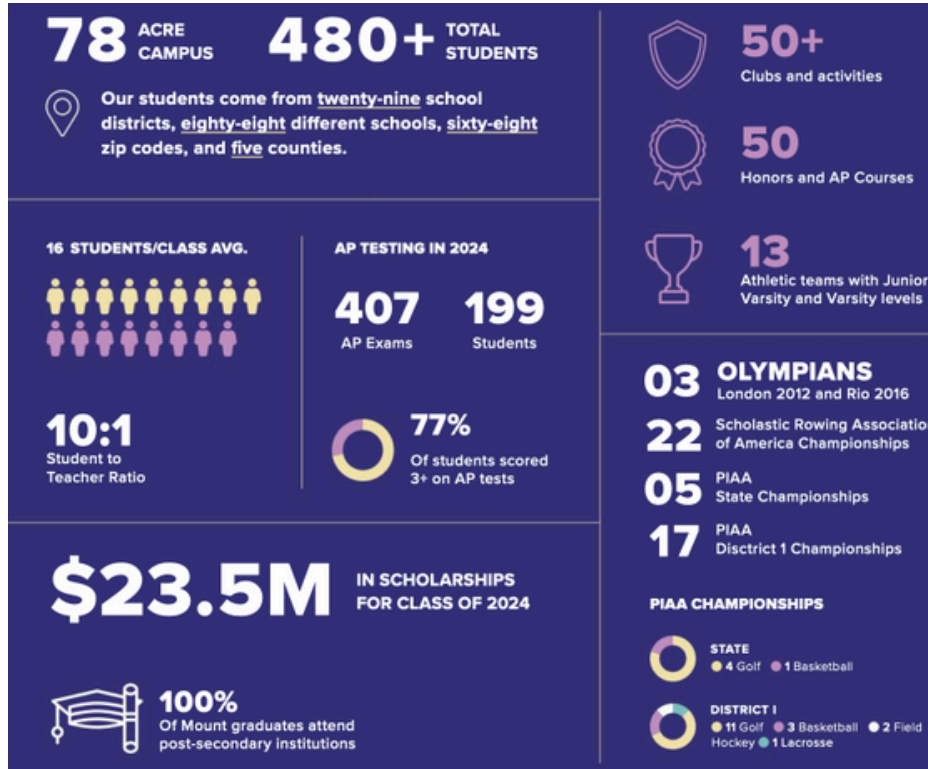
- Algebra I, II
- American Literature
- Anatomy & Physiology
- Biology
- British Literature
- Chemistry I, II
- Concepts of Physics
- Foundations of Western Civilization
- Geometry
- Government, Policy & Economics
- Human Geography
- Independent Art
- Introduction to Writing & Literature
- Language III, IV
- Modern Europe
- Music Theory
- Pre-Calculus
- U.S. History Modern 1
- U.S. History Modern 2
- Women As Founders
- Women's Studies

AP Courses:

- Art History
- Biology
- Calculus AB
- Calculus BC
- Computer Science A
- Computer Science Principles
- English Literature & Composition
- European History
- French Language
- Latin
- Microeconomics
- Music Theory
- Physics I: Algebra-Based
- Physics C: Electricity & Magnetism
- Physics C: Mechanics
- Psychology
- Spanish Language
- Statistics
- Studio Art
- U.S. Government & Politics
- U.S. History
- World History: Modern

**FOR A FULL LISTING OF COURSES,
VISIT OUR CURRICULUM WEBPAGE AT
[MSJACAD.ORG/CURRICULUM](https://msjacad.org/curriculum)**

THE MOUNT AT A GLANCE



COLLEGE OUTCOMES

100% of Mount graduates attend post-secondary institutions, including some of these prestigious colleges and universities:

- | | |
|-------------------------------|---|
| Boston College | Spelman College |
| Boston University | Syracuse University |
| Bowdoin College | The College of William and Mary |
| Brown University | The Massachusetts Institute of Technology |
| Bucknell University | The University of North Carolina at Chapel Hill |
| Carnegie Mellon University | Trinity College |
| Clemson University | Tulane University |
| Colgate University | United States Naval Academy. |
| College of the Holy Cross | University of Florida |
| Columbia University | University of Georgia |
| Cornell University | University of Maryland |
| Dartmouth College | University of Miami |
| Duke University | University of Michigan |
| Fordham University | University of Notre Dame |
| Franklin & Marshall College | University of Pennsylvania |
| Georgetown University | University of Pittsburgh |
| George Washington University | University of Richmond |
| Harvard University | University of Rochester |
| Lafayette College | University of Southern California |
| Lehigh University | University of Virginia |
| New York University | Villanova University |
| Northeastern University | Vanderbilt University |
| Pennsylvania State University | Virginia Polytechnic Institute and State University |
| Princeton University | Wake Forest University |
| Purdue University | Washington University in St. Louis |
| Skidmore College | Worcester Polytechnic Institute |
| Smith College | Wellesley College |

Mount Saint Joseph Academy is accredited by the Pennsylvania Association of Independent Schools (PAIS) and the Middle States Association, is a Niche top-ranked school and was previously named a U.S. Department of Education National Blue Ribbon School