

NEWS FROM THE NEST

JULY/AUGUST 2024

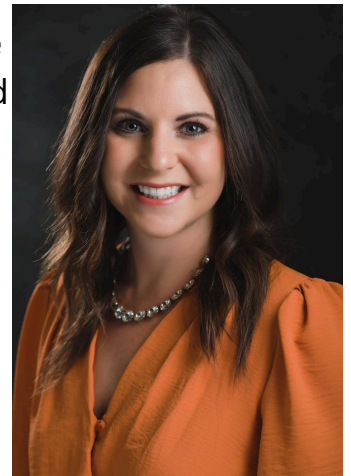
FROM THE PRINCIPAL

Dear Parents and Guardians,

I hope you all had a wonderful and relaxing summer. As we gear up for the new school year, I am excited to welcome everyone back and look forward to a fantastic start.

Here are a few important reminders:

- **Drop-Off Procedures:** Please use the regular drop-off zone for morning drop-offs. Your cooperation in using this designated area helps ensure safety and efficiency. Students will be allowed to enter the playground starting at 7:40am.
- **Breakfast Drop-Off:** If your child will be eating breakfast at school, please drop them off at the high school drop-off zone as early as 7:30am.
- **Preschool students** will meet their teachers at the elementary doors as early as 7:50am. Please do not leave your child unattended.



Claire Kayton, Principal

We are excited to kick off the school year with our Open House & Burger Bash event on Wednesday, August 14th from 5:00pm-7:00pm. You are welcome to come and eat before or after the Open House. Burgers will be served on the playground, making it a great opportunity to meet other families.

Thank you for your ongoing support. Let's work together to make this school year an amazing one for our students. If you have any questions or concerns, please don't hesitate to reach out.

Claire Kayton, Elementary Principal

BCE EVENT CALENDAR

July 31st-August 2nd: Packet Pick Up
(8:00AM-3:00PM Elem. Vestibule)

August 8th: PK-4th Registration
(11:00AM-6:00PM)

August 14th: PK-8 Open House & Burger Bash
(5:00PM-7:00PM)

August 15th: First Day of School
(1:00 Dismissal)

August 21st: Late Start- PLC
(9:10AM Start)

August 22nd: First Day of Preschool

August 23rd: Fall Sports Rally
(7:00PM)

August 28th: Late Start- PLC
(9:10AM Start)

September 2nd: No School



SCHOOL DAY: 8:00AM-3:30PM

*7:30AM HIGH SCHOOL DOORS OPEN FOR STUDENTS EATING BREAKFAST

*7:40AM STUDENTS MAY ENTER THE PLAYGROUND FOR MORNING FITNESS

*7:50AM PRESCHOOL STUDENTS MAY BEGIN MEETING THEIR TEACHER AT THE ELEMENTARY FRONT
DOORS

*8:10AM STUDENTS WILL BE MARKED TARDY

PLC LATE START: 9:10AM-3:30PM

*EVERY WEDNESDAY DURING THE SCHOOL YEAR

*8:30AM HIGH SCHOOL DOORS OPEN FOR STUDENTS EATING BREAKFAST

*8:45AM PLAYGROUND IS OPEN FOR STUDENTS TO PARTICIPATE IN MORNING FITNESS

FALL TESTING (K-4TH)

In the spring of 2018, the Nebraska Legislature passed into law the Nebraska Reading Improvement Act (section 79-2601-79-2607). The purpose of this act is to position all students for success in their educational journey by focusing on the development of early reading skills.

This act requires schools to:

- *Assess students in kindergarten through third grade three times each year with a state-approved universal screening assessment.
- *Notify families if their child scores below the required achievement threshold set by the state on the assessment.
- *Develop an Individual Reading Improvement Plan (IRIP) for students who score below the threshold that informs families what the school is going to do to help the student improve his/her early reading skills.

The universal screener we use at Boone Central Elementary with students in Kindergarten through fourth grade is FastBridge for Reading and Math. These students also complete the MAP Growth Reading and Math tests.

Students and teachers did a great job with these tests. The beginning of the year benchmarks have been completed. These tests will happen again in the winter and spring. The future testing dates will be communicated with parents at a later time.

If you have any further questions, please contact your child's teacher or Mrs. Kayton.

NURSE'S CORNER



August 8th: Registration & Health Screenings

Please bring the following:

- *Completed Paperwork
- *Glasses, Contacts, Hearing Devices
- *A **BIG** smile for Pictures! :)

PK Immunizations and Birth Certificates need to be turned in by **August 8th**

Kindergarten Physicals, Immunizations & Eye Exams need to be turned in by **August 8th**

PTO WANTS YOU TO KNOW

Boone Central Elementary Parent Teacher Organization (PTO)

What does PTO do for our school?

- *Teacher gifts 2-3 times a year
- *Teacher meals during parent-teacher conferences
- *Popcorn & pop for students during the annual Christmas party at Gateway Theater
- *Supplying our teachers and library with new books through the Scholastic Book Fair
- *Birthday cookies for students presented during Rockin' Rally each month
- *Previous funds have been used for: playground picnic tables, new playground equipment; iPads; flashing crosswalk signs
- *Many more things that come up during the year to support our students and staff!

BE SURE TO LIKE "BOONE CENTRAL ELEMENTARY PTO" ON FACEBOOK TO STAY UP TO DATE!

WE WILL MEET THE SECOND MONDAY OF EACH MONTH AT 6:00 AT BOONE CENTRAL ELEMENTARY! WE LOOK FORWARD TO YOU JOINING US!

LIKE US ON FACEBOOK

