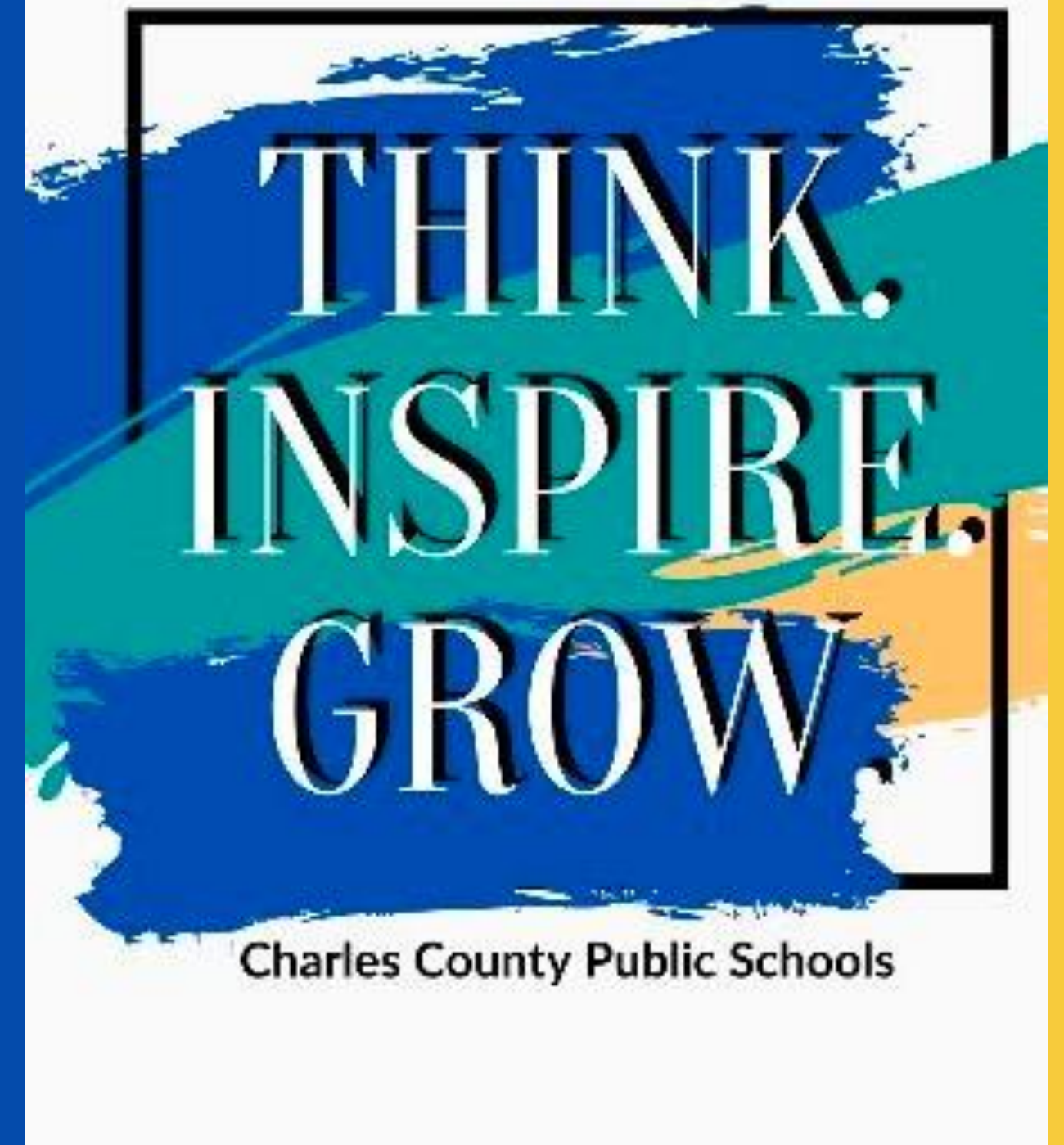


Charles County
Public Schools
School Improvement Plan
Cycle 1

Maurice J. McDonough
High School



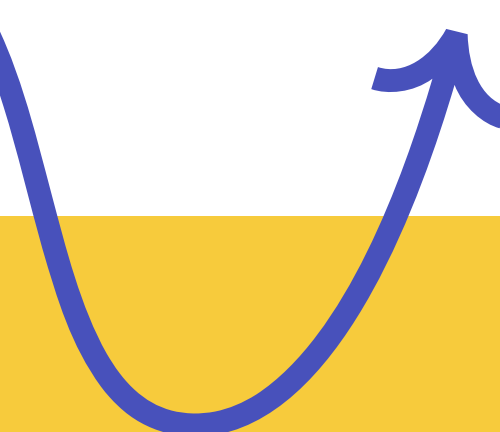
23-24 School year in Review...

- Nine students received the Seal of Biliteracy earning proficiency in listening, speaking, reading and writing in English and one or more languages (highest in the county).
- Our talented students were recognized as All State thespians, achieving superior rankings and advancing to national competitions for the third consecutive year.
- The Envirothon team won first place in the county competition.
- The Unified Track team won the Maryland State Championship.
 - Our talented student-athletes won individual Regional Championships in indoor track, and our fall cheer team won a regional championship.
- Ms. Erin Reif, parent volunteer, was celebrated as the Be the Difference award winner for CCPS High Schools.
 - The class of 2024 earned over nineteen million dollars in scholarships and grants.



Why Continuous School Improvement

- ✓ School Improvement is the blueprint schools use to guide decision – making to impact important markers of successful schools - student achievement, absenteeism, teacher retention and development, school climate and culture, parental involvement, resource allocations, and systems and structures (Grissom, Egalite, & Lindsay, 2021).
- ✓ Each school develops a School Improvement Plan (SIP). The SIP identifies priority goals, instructional and culture strategies, and supports schools will implement to raise student achievement and prepare students for college and career pathways.
- ✓ This work starts at the elementary school and continues through high school.



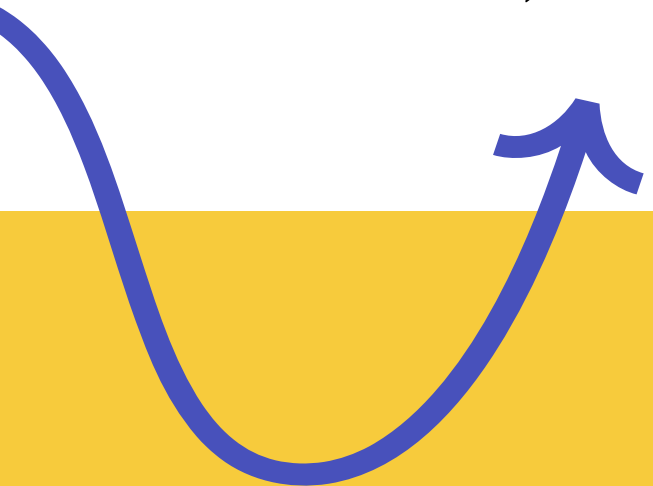
Charles County
Public Schools

Working together to achieve excellence for every student.

Why Continuous School Improvement

Continuous improvement is based upon three core principles:

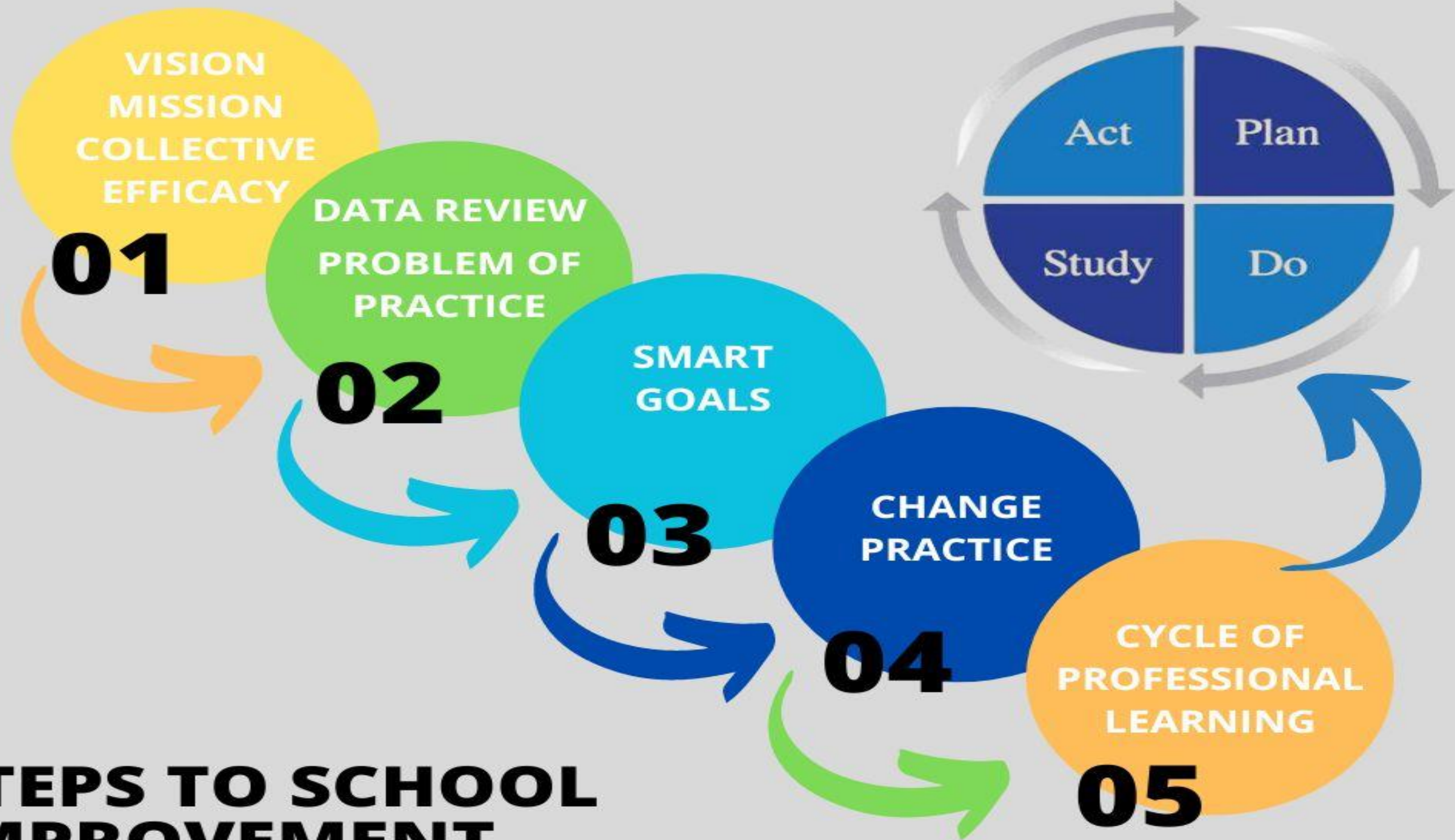
- ✓ Change takes time and involves collective effort (Bryk et al., 2015; Katz, Earl, & Jaafar, 2009).
- ✓ Change is context-specific and therefore requires constant adaptation, data collection, and learning (Bryk et al., 2015).
- ✓ Focusing on a series of small changes, combined with ongoing evidence collection and review, can lead to large-scale change (Derrick-Mills, Sandstrom, Pettijohn, Fyffe, & Koulish, 2014; Hawley, 2006; Park, Hironaka, Carver, & Nordstrum, 2013; Snow, Dismuke, Zenkert, & Loffer, 2017).



Charles County
Public Schools

Working together to achieve excellence for every student.

STEPS TO SCHOOL IMPROVEMENT



Maurice J. McDonough High School

Vision, Mission, Collective Efficacy Statements

Vision: The vision of Maurice J. McDonough High School is to create the best environment where students can be prepared for college and career by focusing on equity, creativity, and collaboration.

Mission: The mission of Maurice J. McDonough High School is to educate all students in a safe, supportive, and challenging environment where students learn to be productive citizens in a diverse society.

Collective Efficacy Statement: At Maurice J. McDonough High School we share a growth mindset so that we can make our dreams come to fruition. We collaborate towards our common goals. We are individually proud and collectively strong.



Charles County
Public Schools

Working together to achieve excellence for every student.

Area of Focus

Dear Parents and Guardians,

We are excited to share our commitment to enhancing our students' proficiency in English Language Arts (ELA) and Mathematics. Our goal is to support all students in achieving and exceeding state proficiency levels on the MCAP assessments.

To achieve this, our focus is to enhance the learning experience for all students in grades 9-12 by implementing well-designed lessons that foster engagement and meet diverse learning needs. We believe that through differentiated instruction and quality programming, we can create an environment where every student thrives and reaches their full potential in English and math.

Thank you for your continued partnership in your child's education.

Sincerely,

Maurice J. McDonough High School

Data Summary

Below is information used to formulate our school goals.

English Language Arts Data Overview	Mathematics Data Overview
MCAP ELA scores	MCAP Algebra I and II scores
BASE Line Student data	BASE Line Student data
Student work samples	Student work samples
Student common assessment data	Student common assessment data
Student grades	Student grades



School Problem of Practice & Smart Goals

ELA Smart Goal

- By the end of the 2024-25 school year, the percentage of students performing proficient or above on the 10th grade ELA MCAP will improve by 10%.

Mathematics Smart Goal

- By the end of the 2024-25 school year, the percentage of students performing proficient or above on the Algebra I/II MCAPs will improve by 10%.



Charles County
Public Schools

Working together to achieve excellence for every student.

Cycle 1: Change Practice & Cycle of Professional Learning

Change Practice

We will train and promote the use of the MEALS writing plan as a strategy all students can use. We will also train teachers on the use of engagement strategies, leveraging research-based strategies from AVID-Advancement Via Individualized Determination.

Cycle of Professional Learning # 1 Overview (Researched Engagement Strategies)

- MEALS writing strategy
- Focused notetaking
- World Café
- Circle Discussions
- Thinking Notes
- WICOR partners
- One Pager

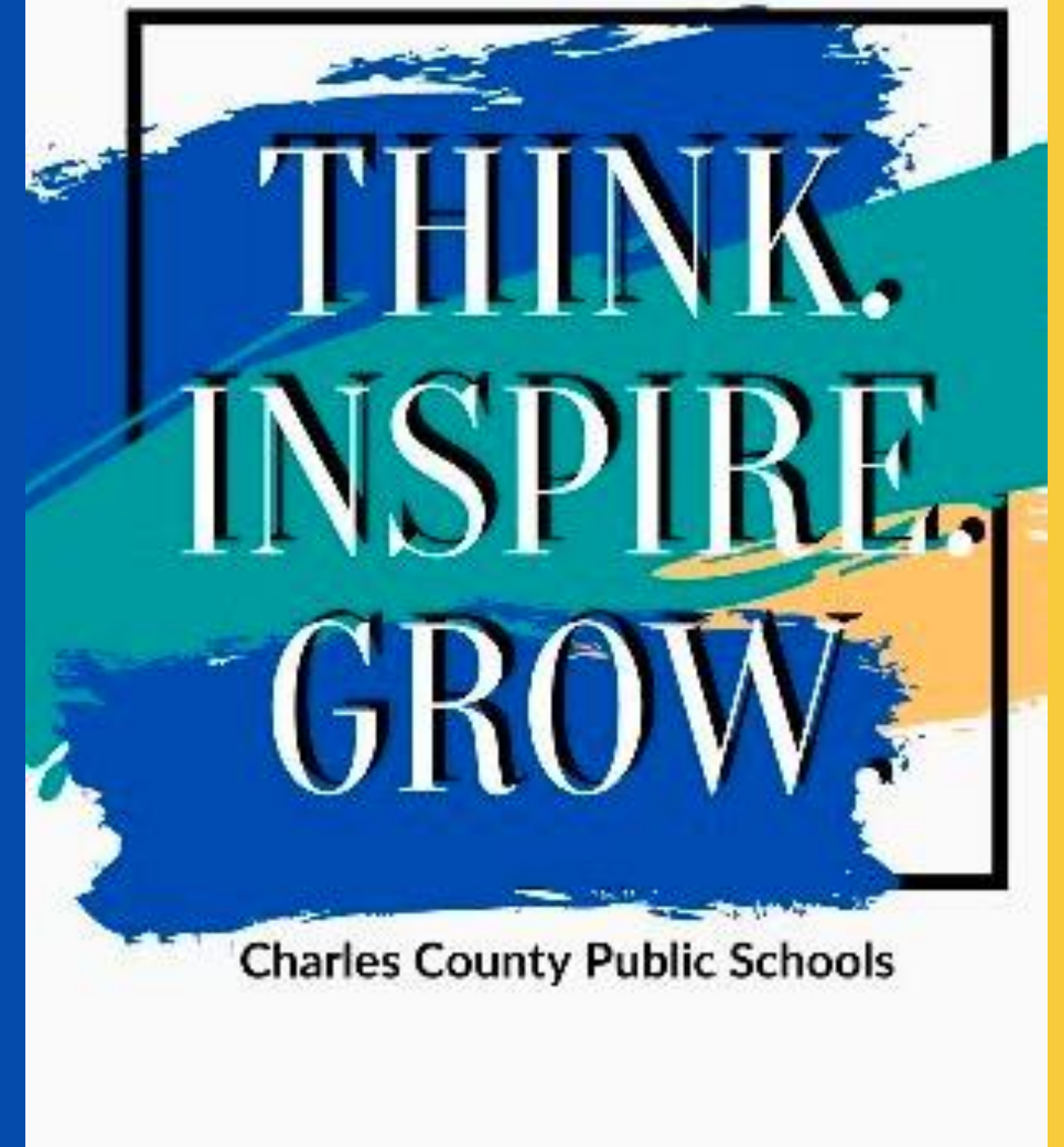


Cycle 1: Anticipated Outcomes

Anticipated Outcomes (Educators)	Anticipated Outcomes (Students)
Teachers will unpack the content standards for students.	Students will ask questions to clarify their thinking
Model the thinking necessary to compose writing	Use evidence to support their claims
Expect the use of evidence to support claims in writing	Use academic vocabulary appropriate to the topic or standard and audience.
Prompt new student thinking about the organization of their writing	Demonstrate their understanding of topics and content standards
Refer to models for good writing and organization	Use models to organize their thoughts

Charles County
Public Schools
Culture & Climate Cycle 1

Maurice J. McDonough
High School



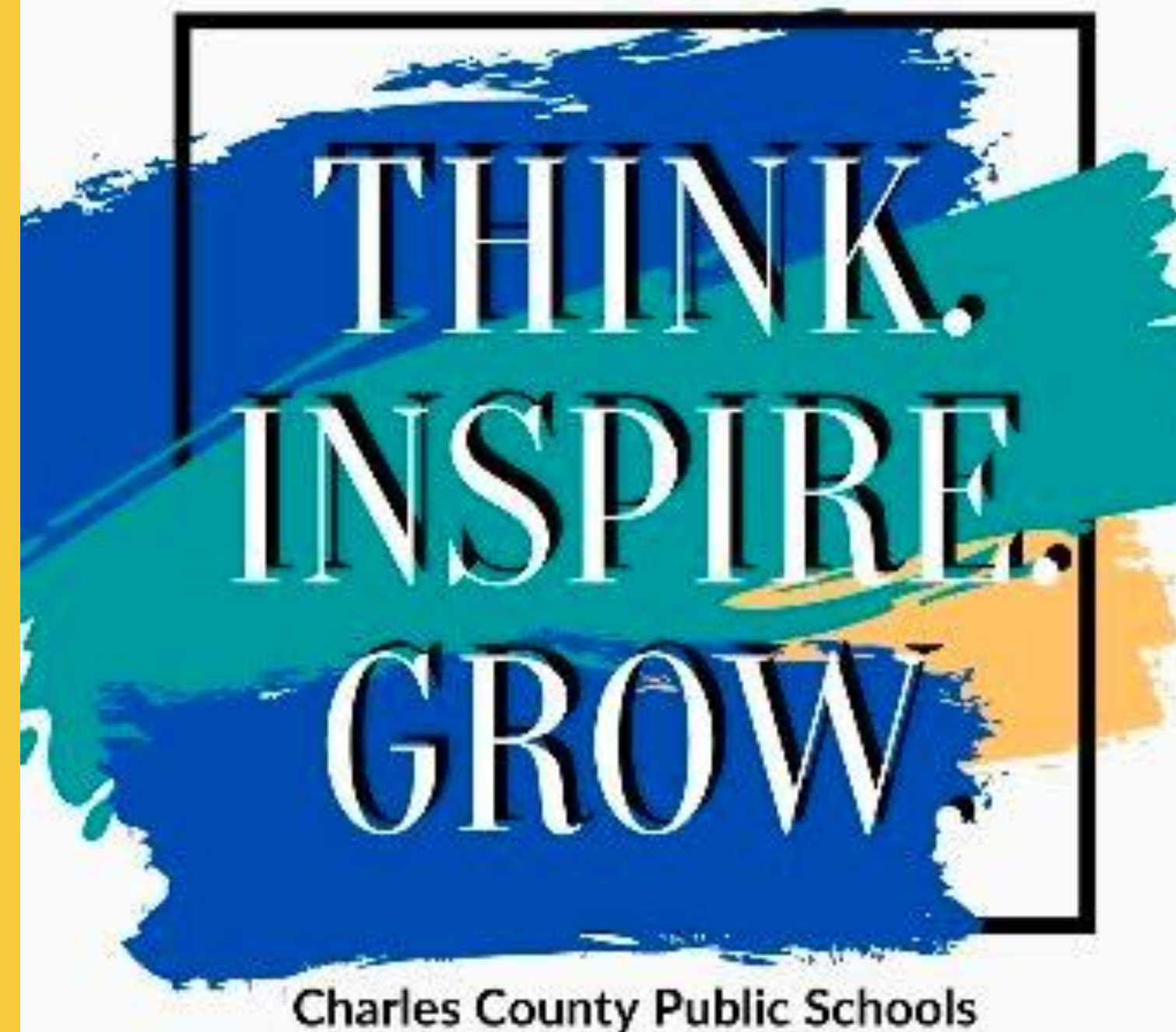
Culture & Climate Overview

Data Overview	Data points considered to build our culture and climate goals were: <ul style="list-style-type: none">-Student attendance-Discipline data-Baseline survey data-Referrals for behavioral health assessments
Area of Focus	Our focus is to enhance the positive culture and climate for all students in our school. To do this, we will focus on our PBIS school initiatives building upon positive incentives and restorative approaches to education. We believe that through staff and student training in these areas, we can make a positive impact on school culture and the educational experience.
Smart Goal	By the end of the first quarter, we will see a 10% reduction in tardiness referrals from the previous school year.

Action Steps

- 1 Implementation of PBIS incentives
- 2 Engagement strategies through instruction
- 3 Restorative Practices trainings for staff
- 4 Proactive Re-direction protocols with students

THANK
YOU FOR
REVIEWING
OUR PLAN!



Working Together To Achieve Excellence For Every Student . . .

We Appreciate Your Partnership!