

Lebanon Community School Corporation
Proposed Overall Site Plan for the Middle School Renovation
and the New Transportation Facility



Sound Source Location

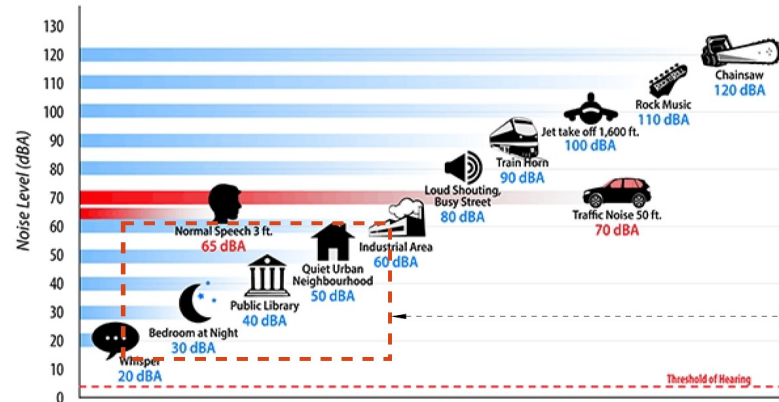
Receiver Location 3, house due East

Receiver Location 1, inside lot

Receiver Location 2, ~neighborhood to Southwest

- Acoustics to keep sound down
- Build mounding on east side
- 10 ft fence all the way around
- Room for up to 80 buses
- Access via John Bart Road
- Staff parking
- Canopies covering buses
- Fuel station

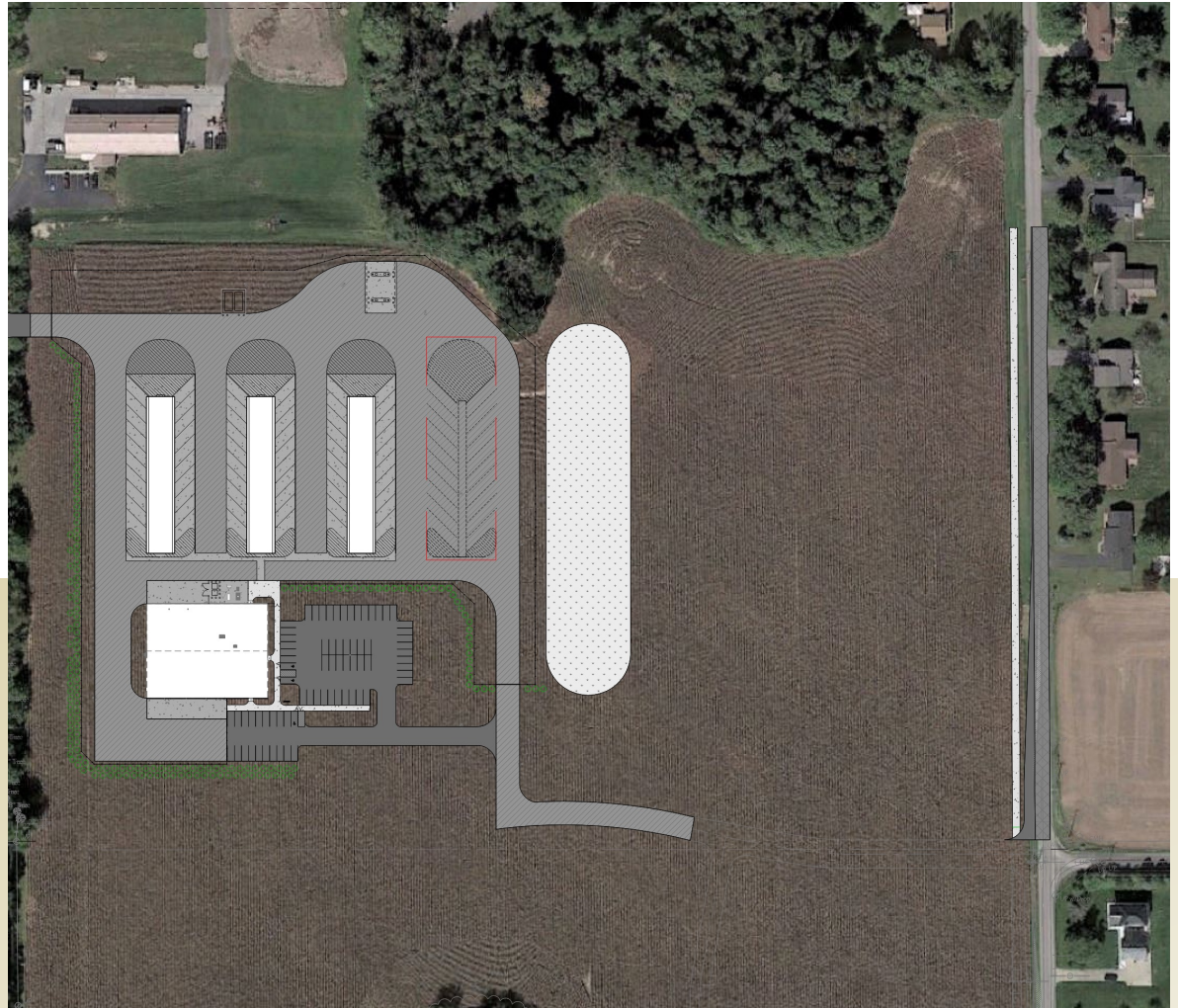
COMMON INDOOR/OUTDOOR NOISE LEVELS



RECEIVER LOCATION AND ACOUSTICAL STUDY TYPE	BERM ON WEST, SW AND EAST SIDES	10' BARRIER FENCE AND TREES (no berm)	TREES ONLY (NO FENCE, NO BERM)	10' BARRIER FENCE ONLY
LOCATION 1, SPL@1KHz	70 dB	70 dB	69 dB	72 dB
LOCATION 1, STI	STI .76	STI .73	STI .80	STI .68
LOCATION 2, @1KHz	51 dB	29 dB	49 dB	34 dB
LOCATION 2, STI	STI .53	STI .25	STI .60	STI .30
LOCATION 3, SPL@1KHz	53 dB	39 dB	46 dB	41 dB
LOCATION 3, STI	STI .49	STI .42	STI .63	STI .53



- Staff and visitors will park in the front
- Restroom + showers
- 4 service bays
- Extra space in bays to be able to work on multiple buses at a time
- Computer space near service bays to check on orders/inventory
- Plenty of storage space
- Automatic bus wash (convenient for the winter months)
- 2 garages on the north and 2 on south, so no need for backing out
- Goes to bid November 2023, begin building spring 2024, completion date estimate August 2025



Lebanon Transportation Facility – Proposed Site Plan

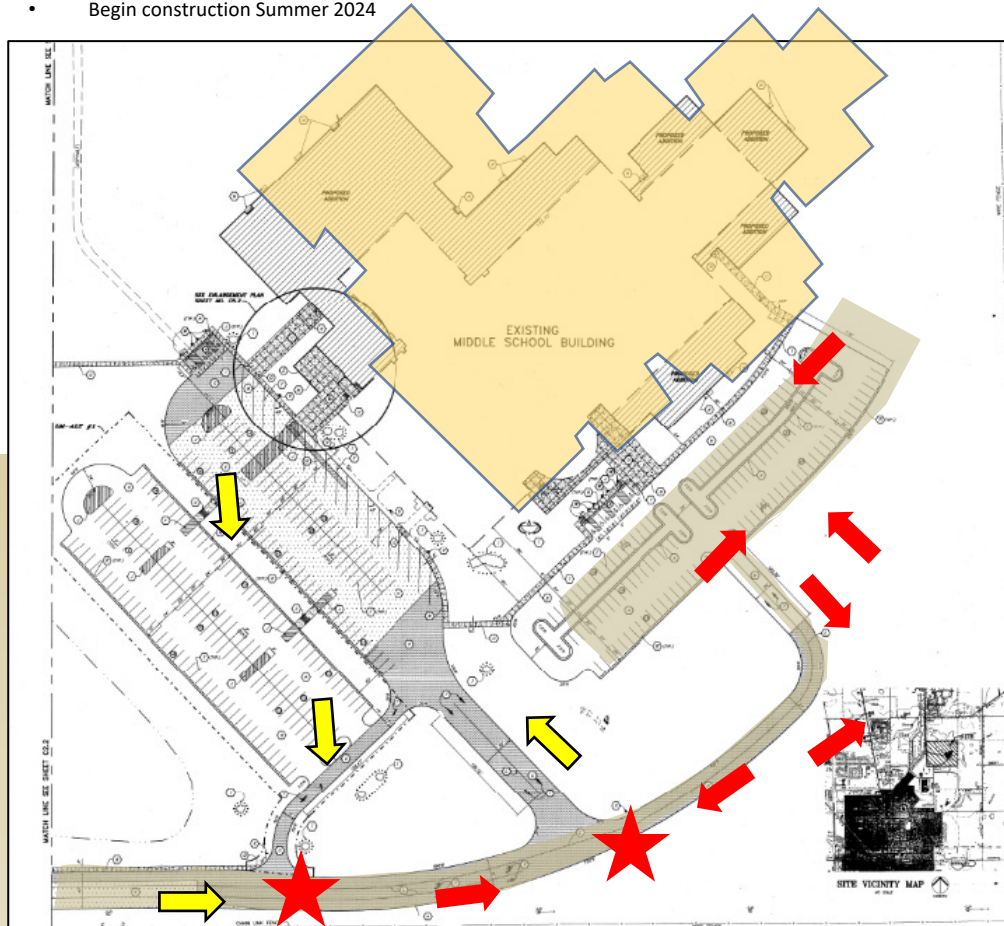
GARAGE
AREA



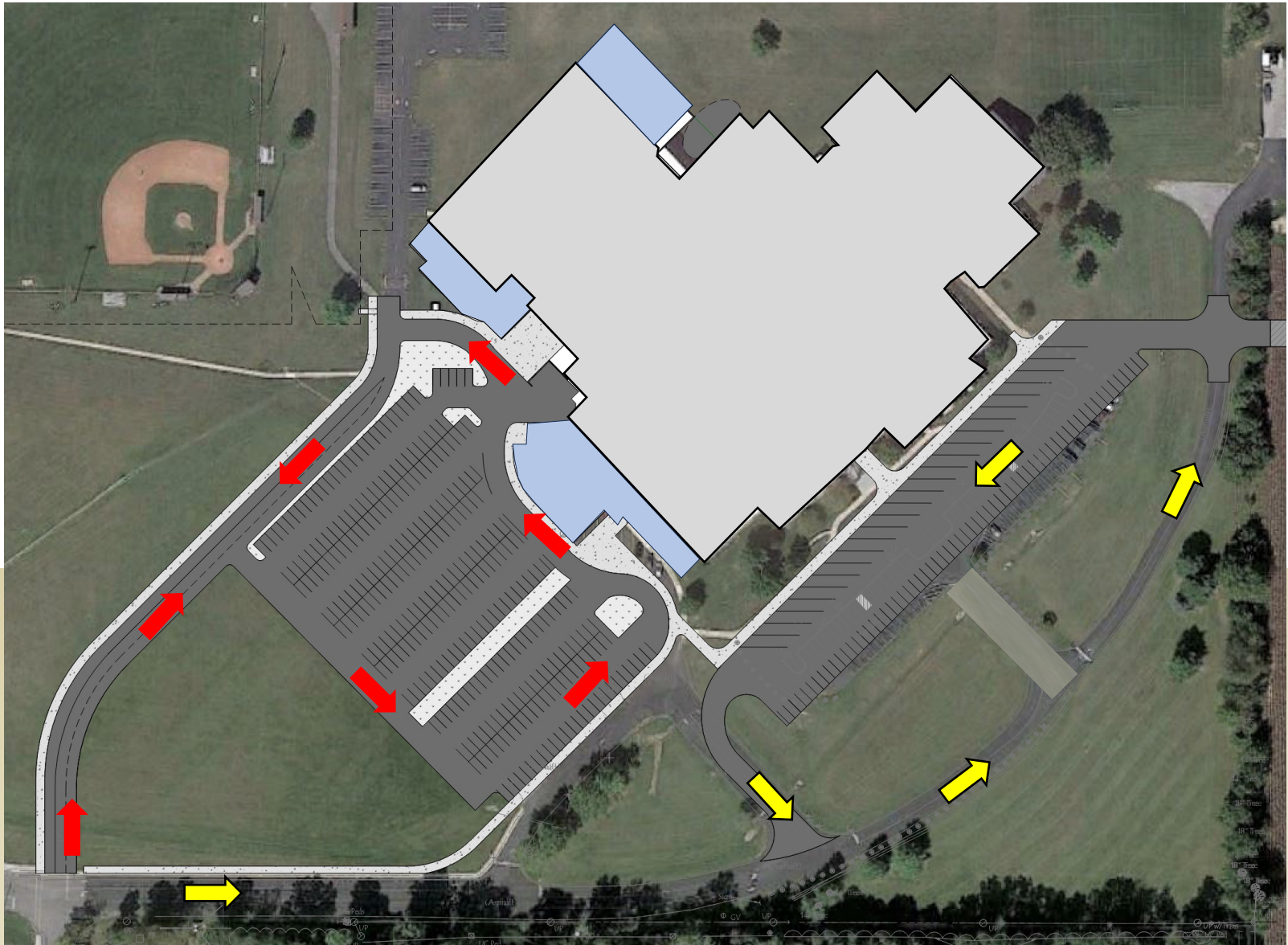
Lebanon

Transportation Center – Proposed Plan & Massing

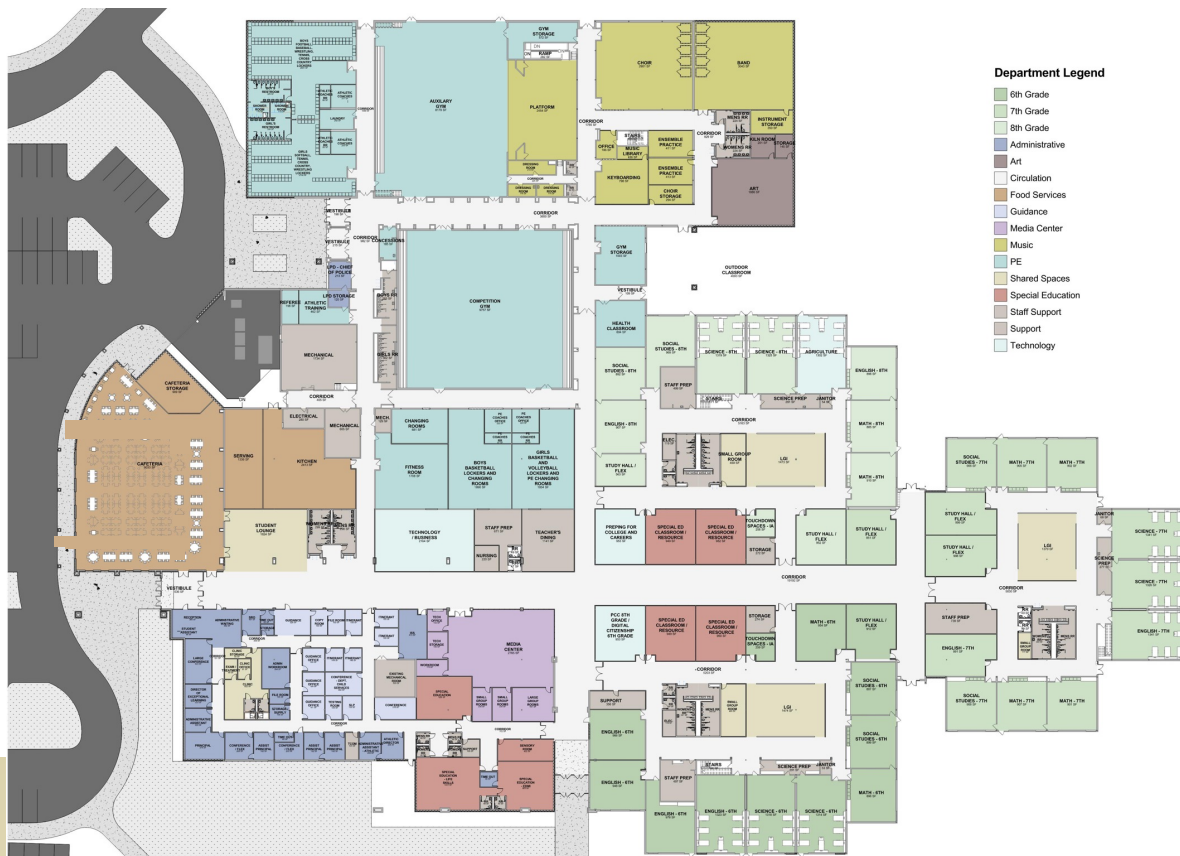
- Increase capacity from 800 to 1200 students
- Add an additional 2500 sq. ft.
- Schmidt met with LMS stakeholders to discuss biggest needs
- New drop off and bus area
- New cafeteria + kitchen
- New central corridor
- Increase classrooms in each pod
- New band + art rooms
- Expand PE + athletic locker rooms
- Additional parking being added for softball field
- Still in conceptual phase
- Begin construction Summer 2024



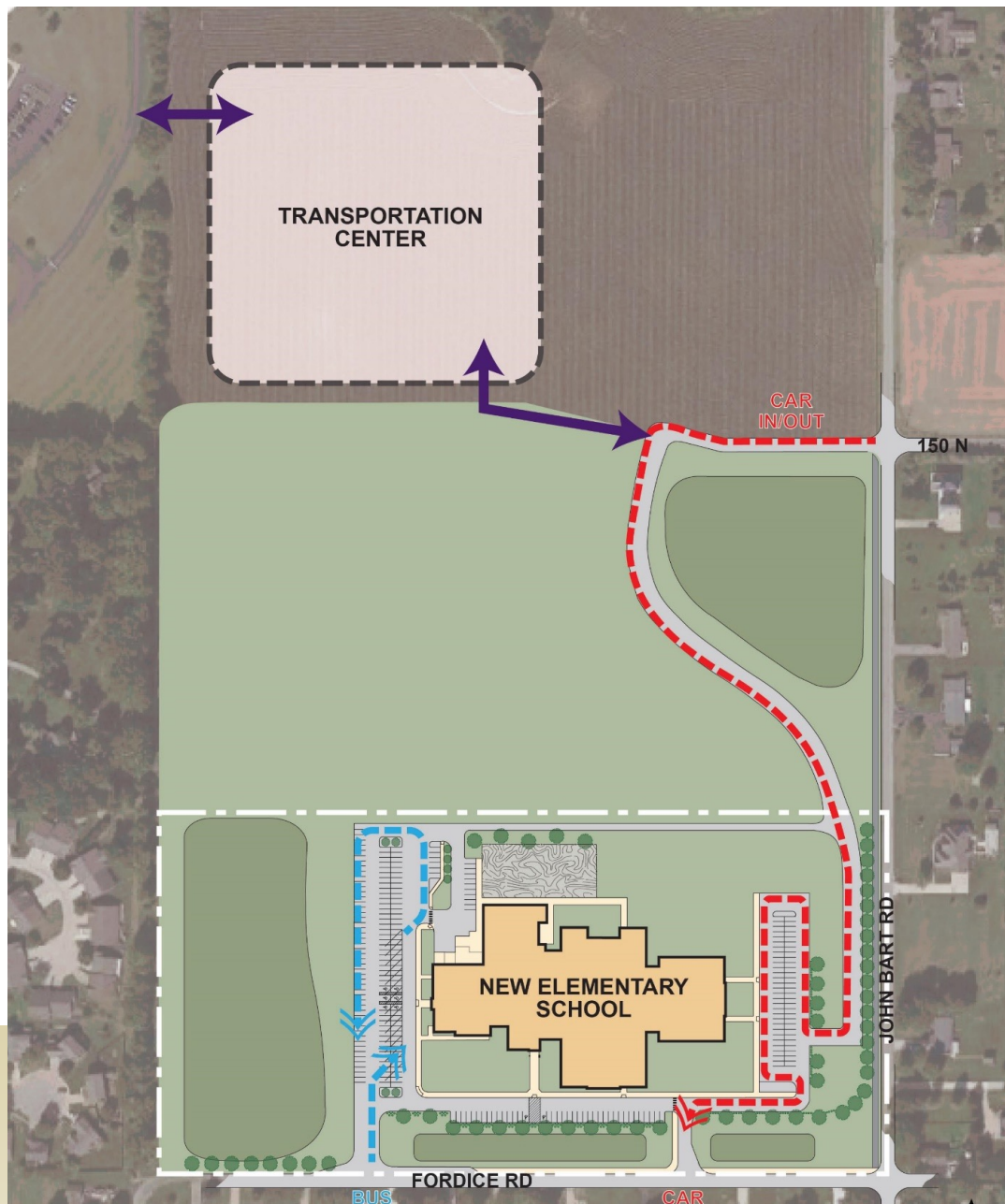
Lebanon Middle School – Existing Site Plan



Lebanon Middle School – Proposed Site Plan



Lebanon Middle School – Proposed Plan & Massing



Lebanon Community School Corporation