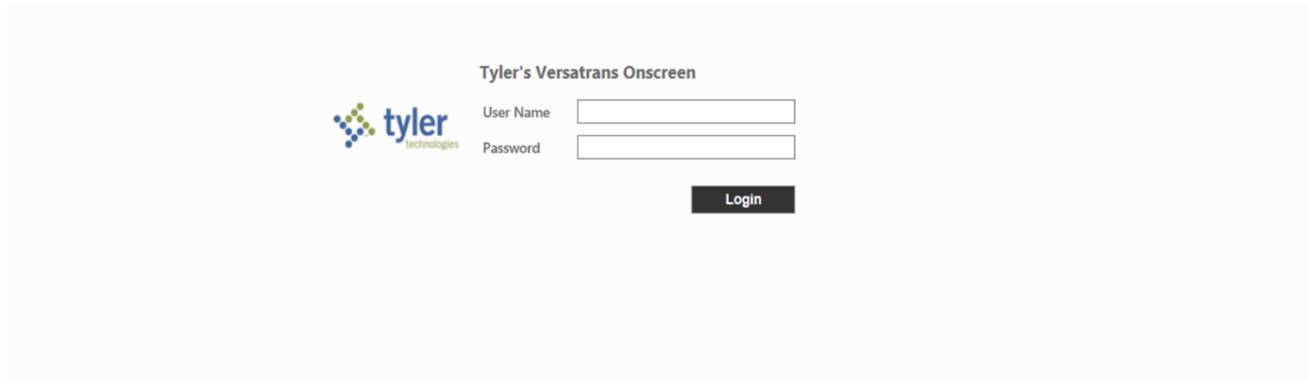


MYSTOP WEBSITE HELP GUIDE

1. LOGGING IN

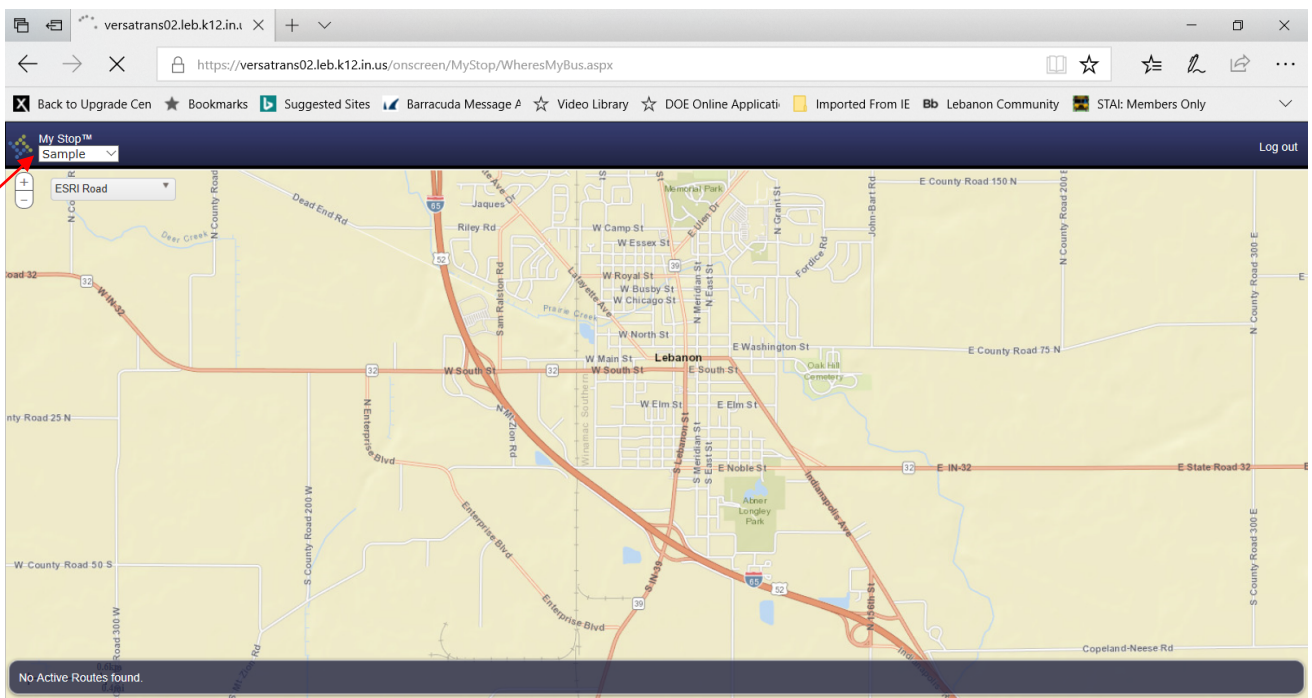
Visit [My Stop e-link](https://transportation.leb.k12.in.us/elinkrp/Login.aspx) (<https://transportation.leb.k12.in.us/elinkrp/Login.aspx>)



Your Family ID (Obtained from Skyward) is the both the **USERNAME** and the **PASSWORD**.

2. SELECTING A STUDENT

If you have more than one child, you will be able to select the child that you wish to see bus information for from the drip down menu at the top left



Select student
from menu

There are also buttons at the top left corner of the screen that will let you zoom in and out, and change the background from the illustrated map to an aerial photograph of the area.

3. MONITORING YOUR BUS

If your bus is out on its route, you will see a green line showing the bus route.

Please note: MyStop estimates travel time along the scheduled route. If the bus is sitting waiting to load or unload, is stuck behind an accident or train, or has to take a detour, the estimated arrival time may not be accurate. This app can also be inaccurate if a replacement bus is used. Please use this system only as a guide.