

Facilities and Technology

Capital Levy

Proposed Measure for November 5, 2024 Election



Recent Capital Funding History

February 2018 - \$40M Capital Levy
collected over 4 years passed at 61%

February 2022 - \$36M Capital Levy
collected over 4 years passed at 56%

February 2024 - \$242M Bond Proposal
Failed at 38%

Proposed November 2024 - \$31.9M Capital
Levy collected over 6 years

How did we decide what to include in the proposed capital levy?

Convened NEW Facilities Advisory Committee

- Committee application and selection process in March of this year
- Larger, more diverse group of stakeholders
- 27 members
- Every school has representation

Site Assessments at all facilities by Bassetti Architects

- Full review and inspection of all physical buildings this Spring
- Facilities experts and engineers conducted site visits and recommendations
- Survey of staff
- Meetings with administrators, staff, parents and community to understand needs



Community Informed, Transparent Process

Facilities Advisory Committee Work

- 8 Meetings from April through July
- 4 school tours (Hilder Pearson, Suquamish, Wolfle, KMS)
- All meeting minutes and presentations posted online and shared in District Newsletters - [visit nkschools.org/fac](https://www.nkschools.org/fac)
- In-depth analysis of site conditions for all facilities
- Hosted 3 community meetings to answer questions and gather feedback
- Reviewed comprehensive list of needs
- Identified priorities based on: Safety and Security, Program Equity and Accessibility, and Critical Building System/Mechanical Improvement needs
- Consideration for urgency of need and feedback from staff and families
- School Board updated at each Board Meeting



Why Run a Levy Now?

Aging facilities and systems require improvements, upgrades, replacements

Backlog of projects and needs that exceed current funding

Current Capital Levy funding will drop drastically in 2025

Inflation Continues - costs will continue to rise over time

Capital improvements are not funded by the state. School districts must rely on local voter approved funding to maintain and improve buildings and technology.

Proposed Facilities and Technology

Levy Project Overview

Safety and Security

Secure entry vestibules
Vehicle circulation
Drop-off/pick-up improvements
Perimeter fencing improvements
Lighting and cameras

Equitable Facilities and Programming

Gymnasium addition
Classroom additions and renovations to support students with disabilities
Accessible paths
Athletics Improvements
Student gathering/play area improvements

Building System/Mechanical Improvements

HVAC improvements
Mechanical system improvements
Exterior painting and sealing
Asphalt/parking lot repairs
Exterior rekey of all buildings

Technology

Chromebook/device replacements
Educational software renewals
Infrastructure improvements

POULSBO MIDDLE SCHOOL

Approximate Cost: \$1,507,500

KEY AREAS OF IMPROVEMENT



SAFETY AND SECURITY

+ Site safety and security improvements - include improved perimeter fencing



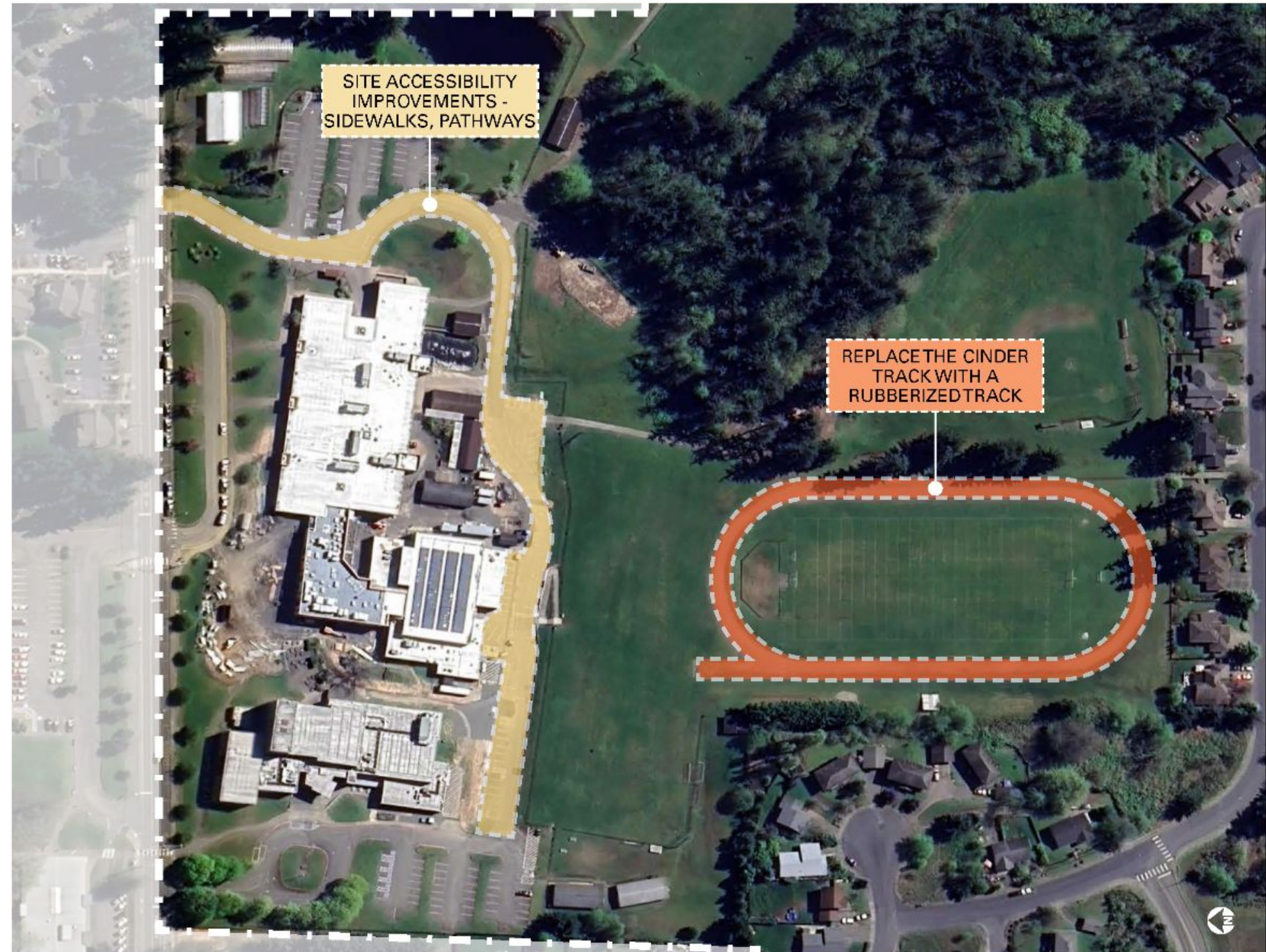
EQUITABLE FACILITIES AND PROGRAMMING

+ Replace the cinder track with a rubberized track



BUILDING AND MECHANICAL SYSTEMS

+ Site surfacing improvements - asphalt repairs and sealing



KINGSTON MIDDLE SCHOOL

Approximate Cost: \$2,843,500

KEY AREAS OF IMPROVEMENT



SAFETY AND SECURITY

- + Vehicle circulation and drop-off/pick-up improvements
- + Site safety and security improvements - include improved perimeter fencing and cameras



EQUITABLE FACILITIES AND PROGRAMMING

- + Replace the cinder track with a rubberized track.
- + Student-centered site improvements include an improved and accessible student plaza/courtyard off of the commons



BUILDING AND MECHANICAL SYSTEMS

- + Exterior facility improvements (exterior painting and sealing as needed)



KINGSTON HIGH SCHOOL

Approximate Cost: \$1,102,500

KEY AREAS OF IMPROVEMENT



SAFETY AND SECURITY

- + Bridge covering/roof/structural assessment
- + Site safety and security improvements



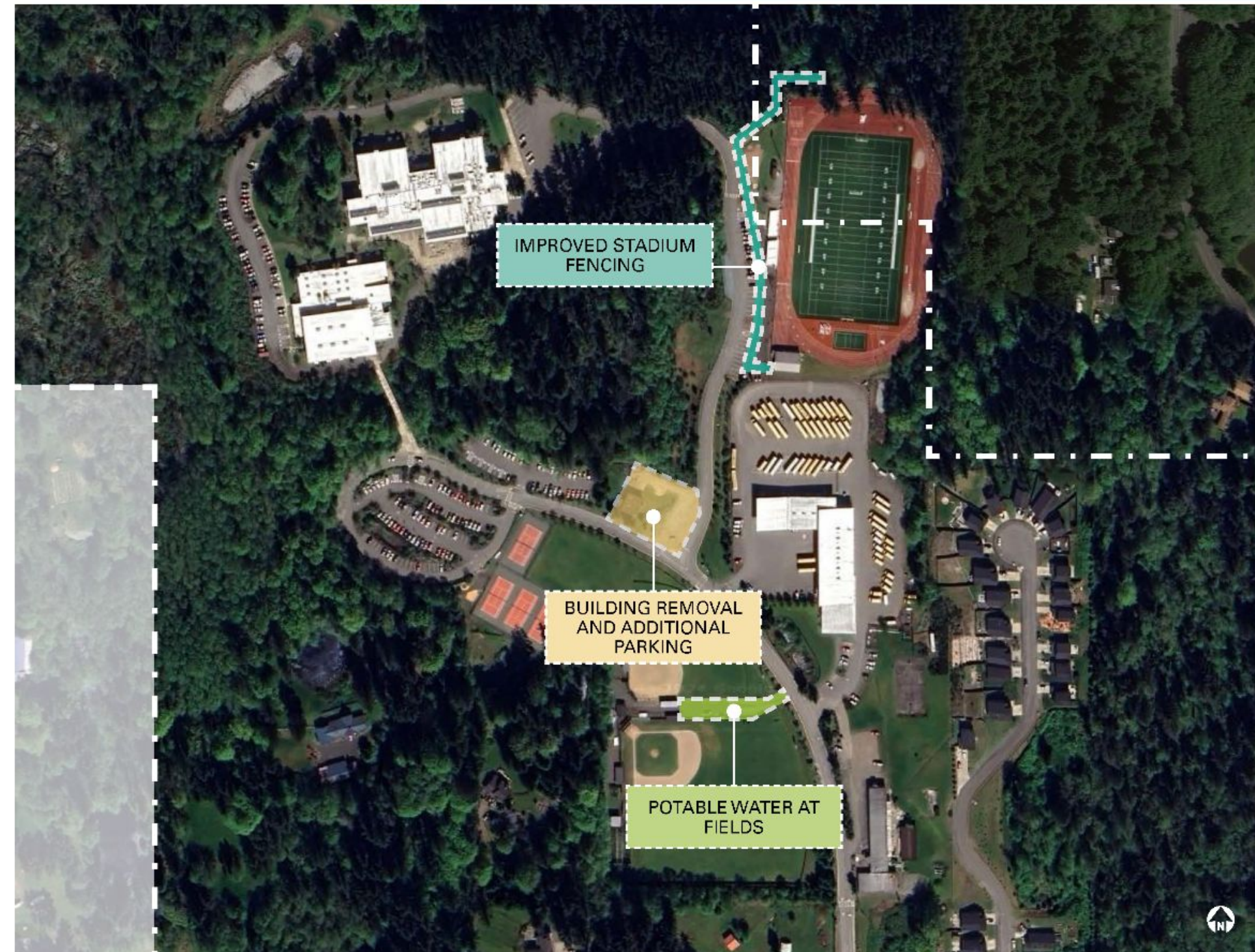
EQUITABLE FACILITIES AND PROGRAMMING

- + Improved grandstands fencing and zoning for entry ticketing
- + Potable water at the baseball and fastpitch fields



BUILDING AND MECHANICAL SYSTEMS

- + Vehicle circulation improvements - removing the utility building and providing additional parking



NORTH KITSAP HIGH SCHOOL

Approximate Cost: \$1,778,500

KEY AREAS OF IMPROVEMENT



EQUITABLE FACILITIES AND PROGRAMMING

- + Site accessibility improvements
- + Student-centered site improvements - include improving the courtyard, landscaping, paths, and sidewalks near the commons



BUILDING AND MECHANICAL SYSTEMS

- + Exterior facility improvements (includes roofing improvements for the 100 building)
- + Mechanical improvements to extend the useful life of the school building and ensure student and staff health and safety



VINLAND ELEMENTARY SCHOOL

Approximate Cost: \$2,756,500

KEY AREAS OF IMPROVEMENT



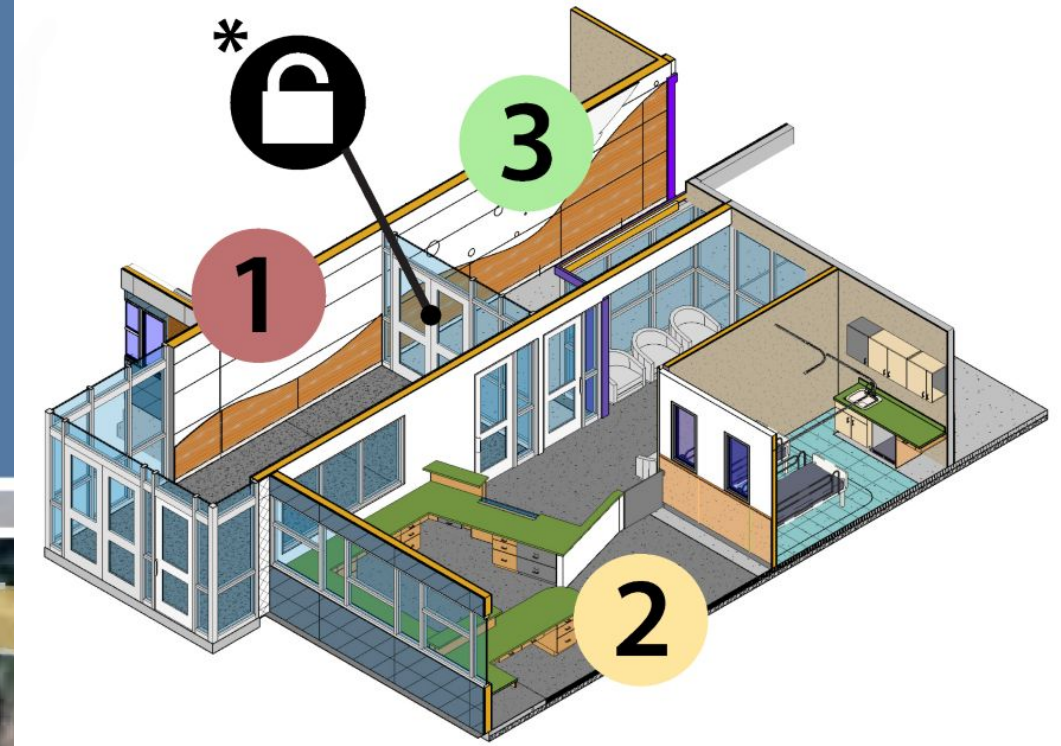
SAFETY AND SECURITY

- + Safe and secure entryway - provides controlled access to the school so that all visitors are directed into the front office and greeted by a staff member
- + Vehicle circulation and drop-off/pick-up improvements
- + Site safety and security improvements - includes perimeter fencing improvements



EQUITABLE FACILITIES AND PROGRAMMING

- + Site accessibility improvements - includes accessible paths



POULSBO ELEMENTARY SCHOOL

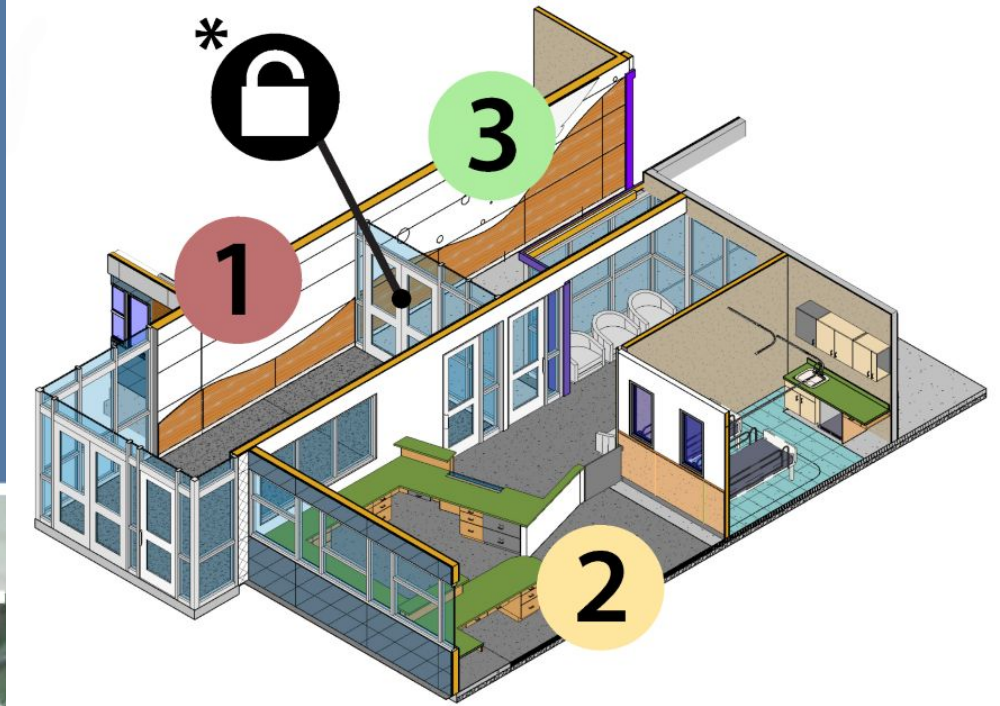
Approximate Cost: \$606,000

KEY AREAS OF IMPROVEMENT



SAFETY AND SECURITY

- + Safe and secure entryway - provides controlled access to the school so that all visitors are directed into the front office and greeted by a staff member
- + Site safety and security improvements - includes perimeter fencing improvements



RICHARD GORDON ELEMENTARY SCHOOL

Approximate Cost: \$1,295,000

KEY AREAS OF IMPROVEMENT



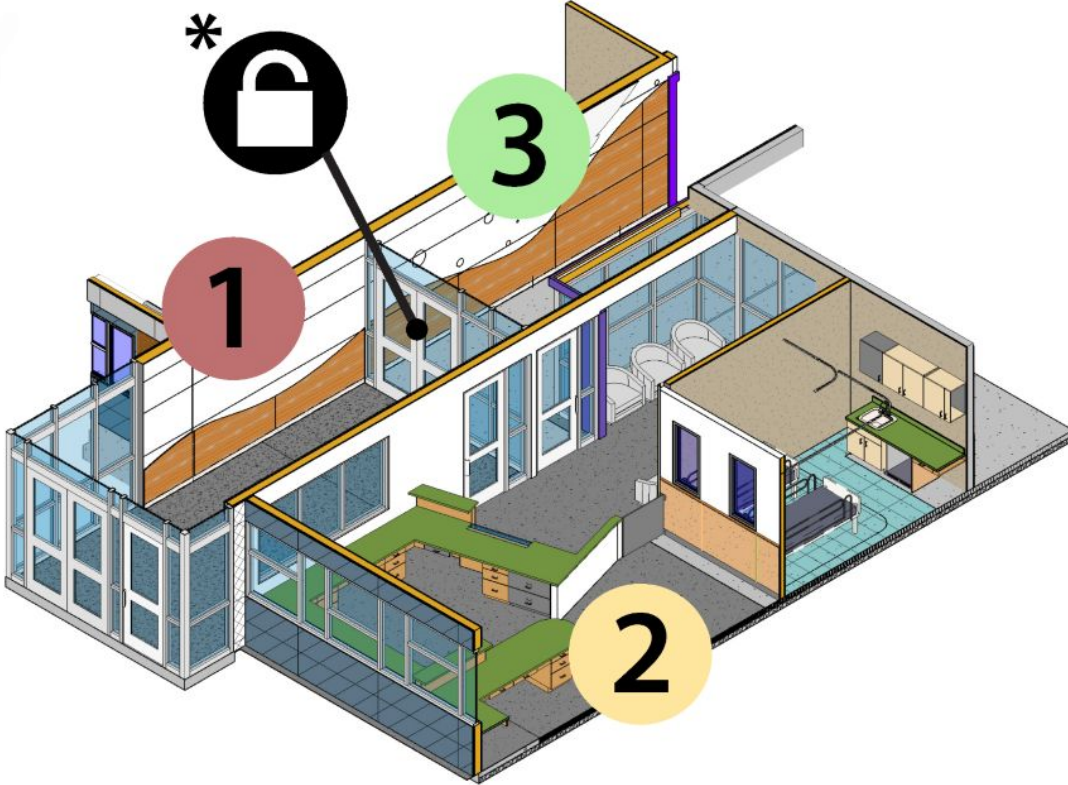
SAFETY AND SECURITY

- + Safe and secure entryway - provides controlled access to the school so that all visitors are directed into the front office and greeted by a staff member



EQUITABLE FACILITIES AND PROGRAMMING

- + New playground
- + Site accessibility improvements - sidewalks, pathways



DAVID WOLFLE ELEMENTARY SCHOOL

Approximate Cost: \$1,904,000

KEY AREAS OF IMPROVEMENT



SAFETY AND SECURITY

- + Safe and secure entryway - provides controlled access to the school so that all visitors are directed into the front office and greeted by a staff member
- + Vehicle and school bus circulation and drop-off/pick-up improvements
- + Site safety and security improvements - including perimeter fencing and stormwater improvements



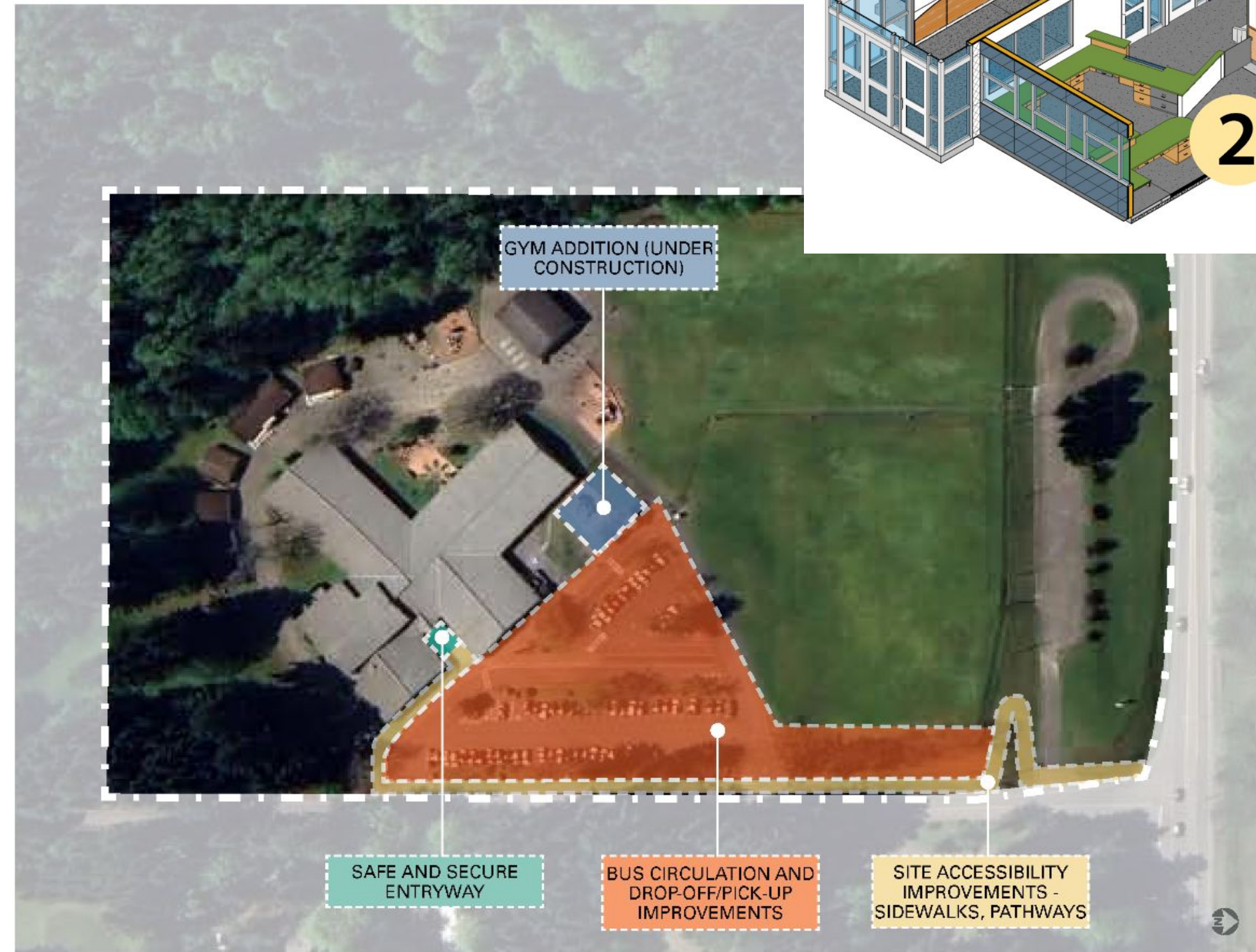
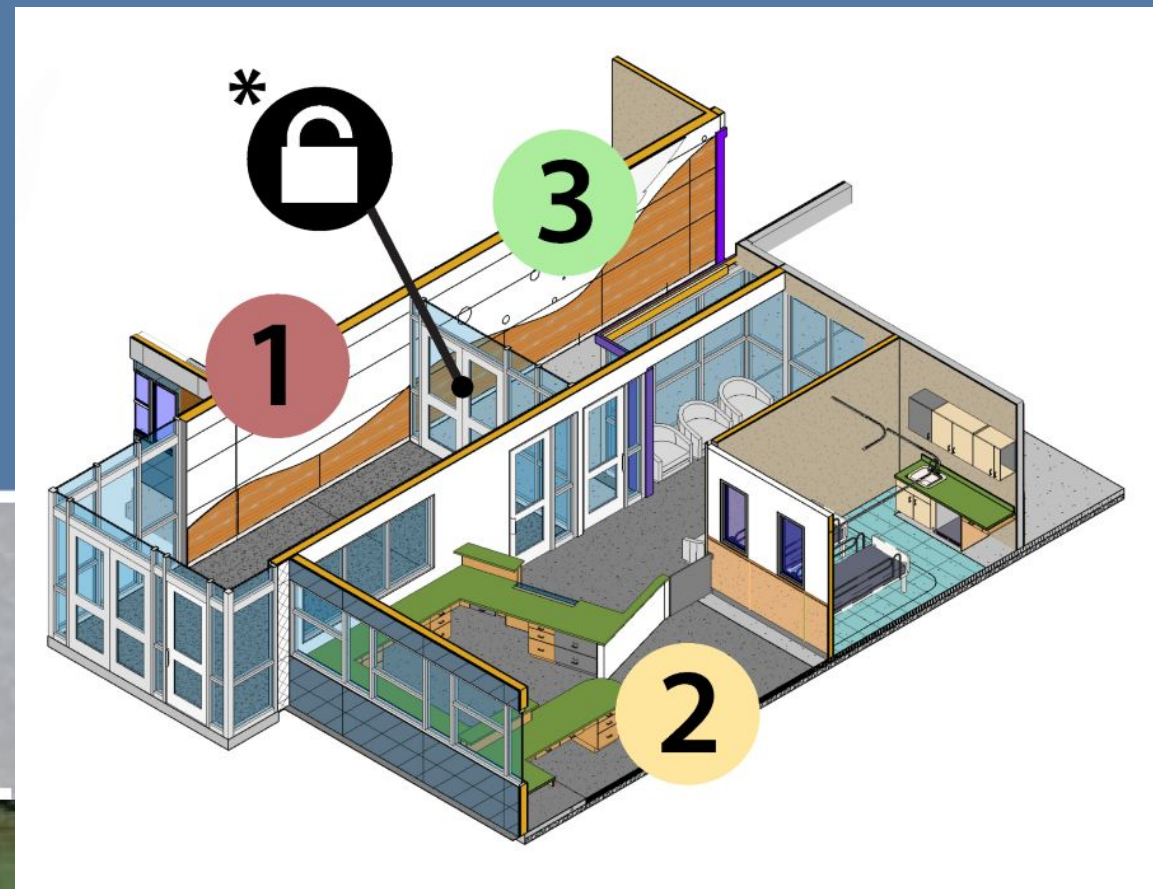
EQUITABLE FACILITIES AND PROGRAMMING

- + Site accessibility improvements - sidewalks, pathways



BUILDING AND MECHANICAL SYSTEMS

- + Exterior facility improvements (exterior painting and sealing as needed)



SUQUAMISH ELEMENTARY SCHOOL

Approximate Cost: \$5,001,000

KEY AREAS OF IMPROVEMENT



SAFETY AND SECURITY

- + Safe and secure entryway - provides controlled access to the school so that all visitors are directed into the front office and greeted by a staff member
- + Vehicle circulation and drop-off/pick-up improvements - includes increasing the parent vehicle queue.
- + Site safety and security improvements - includes perimeter fencing improvements



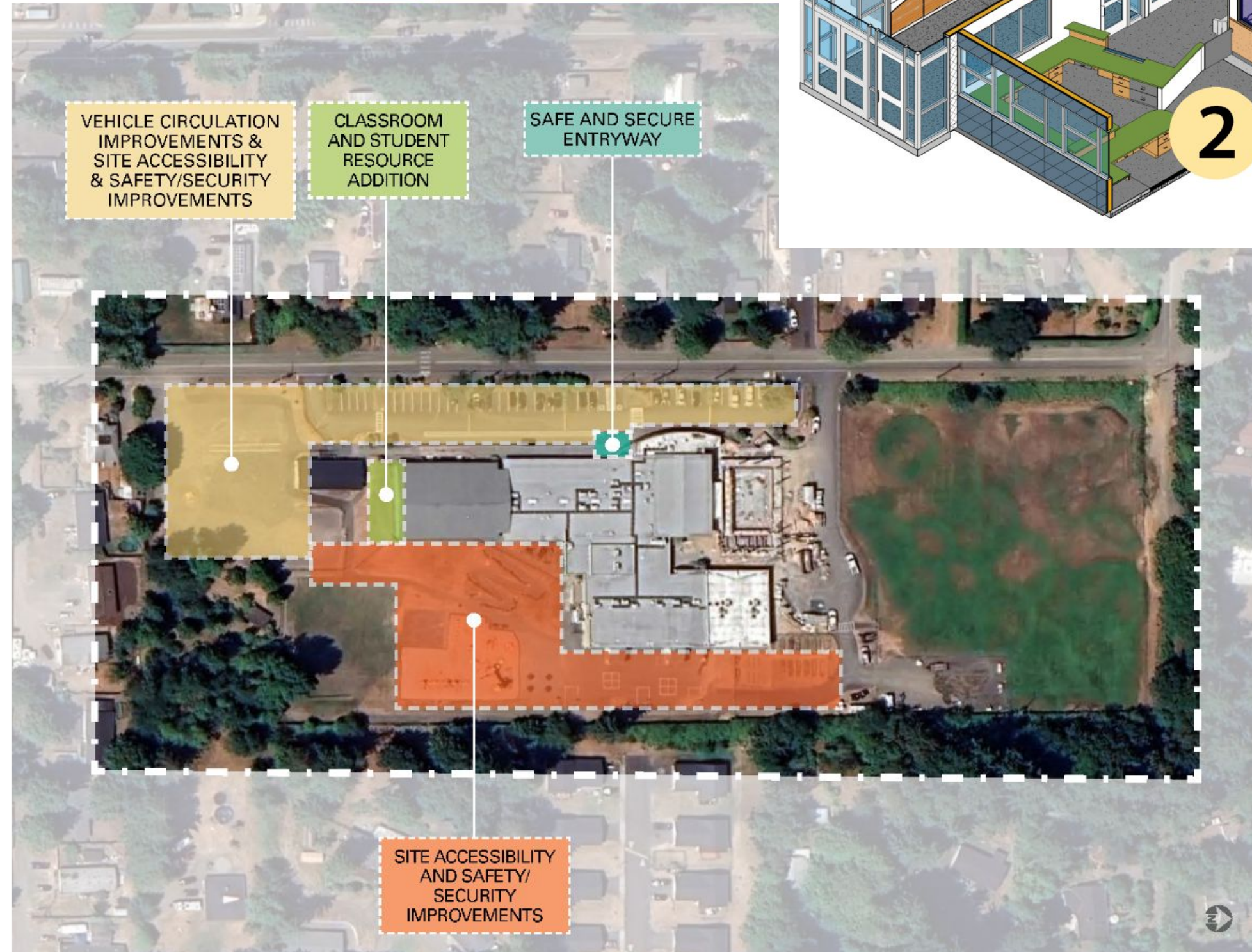
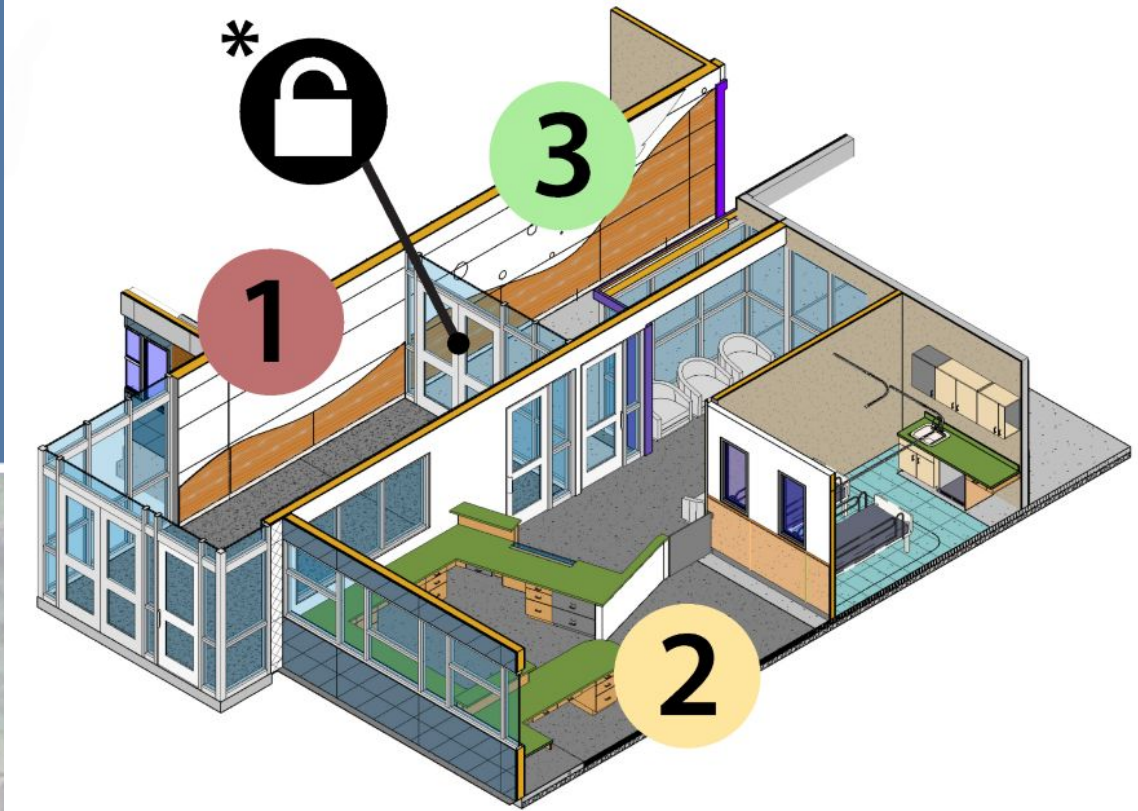
EQUITABLE FACILITIES AND PROGRAMMING

- + Classroom and student resource addition to support students with disabilities and occupational therapy, and renovations to bring all classrooms into the building
- + Site accessibility improvements - includes accessible paths



BUILDING AND MECHANICAL SYSTEMS

- + Mechanical improvements to extend the useful life of the school building and ensure student and staff health and safety
- + Exterior facility improvements (exterior painting and sealing as needed)



HILDER PEARSON ELEMENTARY SCHOOL

Approximate Cost: \$6,145,500

KEY AREAS OF IMPROVEMENT



SAFETY AND SECURITY

- + Vehicle and school bus circulation and drop-off/pick-up improvements



EQUITABLE FACILITIES AND PROGRAMMING

- + Gymnasium addition - Provides a separate, dedicated PE space for improved educational program scheduling. Will be planned and designed to allow for possible future school replacement on site



BUILDING AND MECHANICAL SYSTEMS

- + Mechanical improvements to extend the useful life of the school building and ensure student and staff health and safety



Proposed Cost Information

\$31.9 Million

6-years

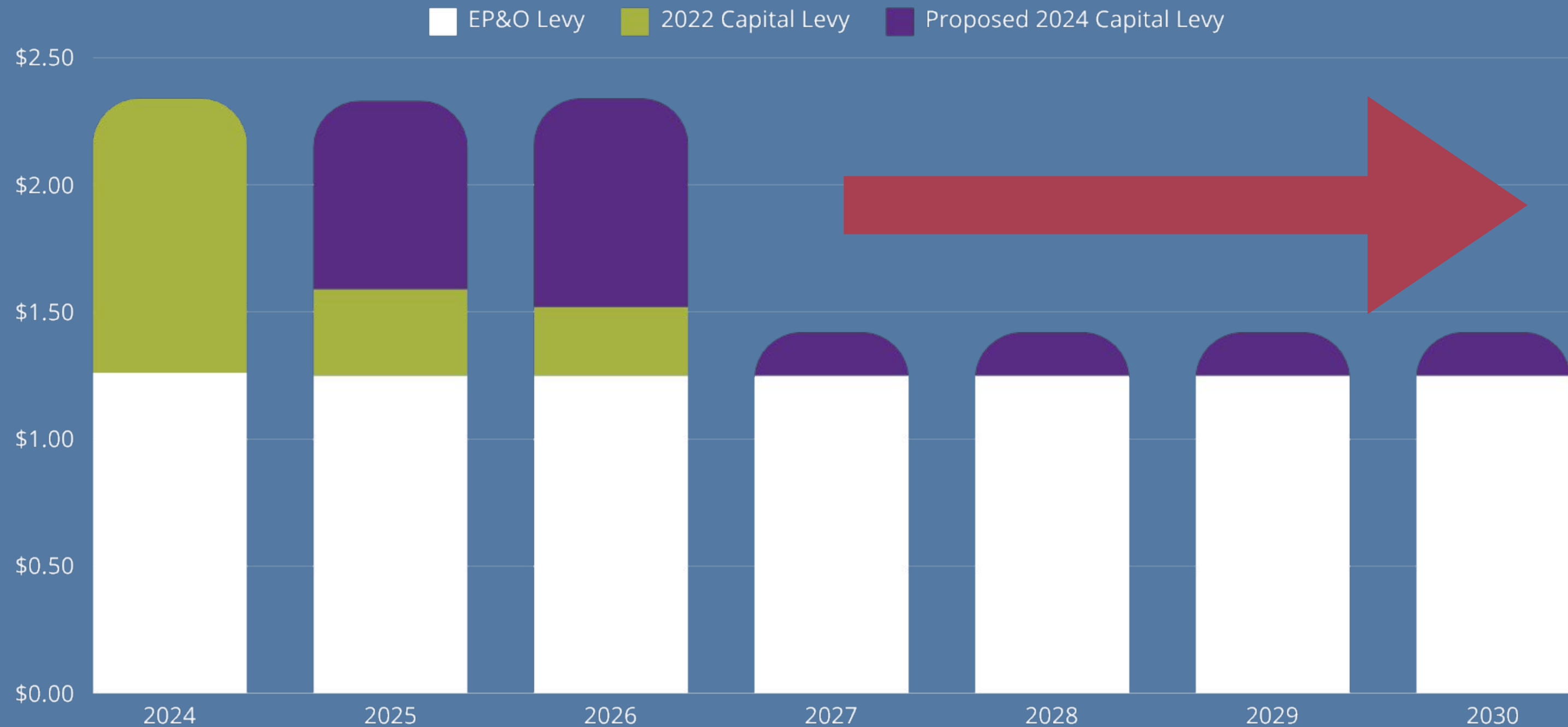
Election in **November 2024**
for **collection in 2025 - 2030**

Collection Year	Estimated Levy Rate Per \$1,000 AV	Levy Amount
2025	\$0.74	\$10,000,000
2026	\$0.82	\$11,500,000
2027	\$0.17	\$2,500,000
2028	\$0.17	\$2,575,000
2029	\$0.17	\$2,652,250
2030	\$0.18	\$2,732,000

Proposed Cost Information

Collection Year	EP&O Rate/\$1,000 AV	2022 Capital Levy Rate/\$1,000 AV	Proposed 2024 Capital Levy Rate/\$1,000 AV	Total Local Rate/\$1,000 AV
Current Collection	\$1.26	\$1.08	N/A	\$2.34
2025	\$1.25	\$.34	\$0.74	\$2.33
2026	\$1.25	\$.27	\$0.82	\$2.34
2027	\$1.25	?	\$0.17	\$1.42
2028	\$1.25	?	\$0.17	\$1.42
2029	\$1.25	?	\$0.17	\$1.42
2030	\$1.25	?	\$0.17	\$1.42

Proposed Cost Information



Maintains capacity to run a capital levy or bond in the future as further long-range planning is finalized.

Need More information?

Visit our website at nkschools.org/2024levy



Tax information



List of projects by school



Facilities Advisory Committee process and data

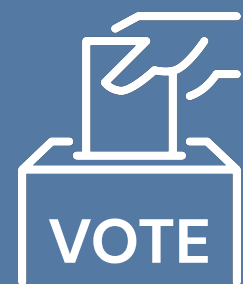


Frequently Asked Questions



Questions? Thank You

Contact us at communications@nkschools.org
with your questions



**PLEASE REMEMBER
TO VOTE BY NOV 5, 2024.**
Need to register? Visit: voter.votewa.gov.

