

INTER-LAKES SCHOOL DISTRICT

School Opening Plan

2020-2021



Recognizing that:

- It is beyond our control to prevent anyone in our community from getting COVID-19; however, steps can be taken to mitigate the risks while at school and work.
- Although there is a strong desire for things to be the same, the time we are in is not the same; however, working together we can still make this a beneficial and productive time for learning.

With this in mind, the Inter-Lakes School District's Objectives for this coming year are to:

- Take active steps to keep our community connected as well as strong physically, socially, and emotionally.
- Mitigate the risks to our school community while physically at work and school.
- Mitigate risks that may impact our ability to provide learning opportunities in an in-person physically present model.
- Create a robust infrastructure for learning no matter the format.
- Work together to make this a beneficial, productive, and continuous time for learning.

Contact Information:

Mary Moriarty, Superintendent of Schools
(603) 279-7947
mary.moriarty@interlakes.org

Inter-Lakes School Board Approved – August 3, 2020

PREFACE

As our local, state, national and global worlds grapple with COVID-19, the Inter-Lakes School District has had to wrestle with *How does the Inter-Lakes School District open school for the 2020 – 2021 school year?* Our educational team, learners, and families did an extremely commendable job from March 2020 – June 2020 to quickly flip a switch to move from face-to-face learning to a home based remote learning model. Despite these heroic efforts at the time, the reality is that we learned that the human-to-human connection in a physical setting is an essential part of the educational experience. Additionally, families report a range of success for the effectiveness for our first remote learning experience.

A review of guidance from the Center for Disease Control and Prevention as well as from the American Academy of Pediatrics revealed the following:

“As families and policymakers make decisions about their children returning to school, it is important to consider the full spectrum of benefits and risks of both in-person and virtual learning options. Parents are understandably concerned about the safety of their children at school in the wake of COVID-19. The best available evidence indicates if children become infected, they are far less likely to suffer severe symptoms.^{[1],[2],[3]} Death rates among school-aged children are much lower than among adults. At the same time, the harms attributed to closed schools on the social, emotional, and behavioral health, economic well-being, and academic achievement of children, in both the short- and long-term, are well-known and significant. Further, the lack of in-person educational options disproportionately harms low-income and minority children and those living with disabilities. These students are far less likely to have access to private instruction and care and far more likely to rely on key school-supported resources like food programs, special education services, counseling, and after-school programs to meet basic developmental needs.^[4] Aside from a child’s home, no other setting has more influence on a child’s health and well-being than their school.” (Center for Disease Control and Prevention: <https://www.cdc.gov/coronavirus/2019-ncov/community/schools-childcare/reopening-schools.html>)

“...the AAP strongly advocates that all policy considerations for the coming school year should start with a goal of having students physically present in school. The importance of in-person learning is well-documented, and there is already evidence of the negative impacts on children because of school closures in the spring of 2020. Lengthy time away from school and associated interruption of supportive services often results in social isolation, making it difficult for schools to identify and address important learning deficits as well as child and adolescent physical or sexual abuse, substance use, depression, and suicidal ideation. This, in turn, places children and adolescents at considerable risk of morbidity and, in some cases, mortality. Beyond the educational impact and social impact of school closures, there has been substantial impact on food security and physical activity for children and families.” (American Academy of Pediatrics: <https://services.aap.org/en/pages/2019-novel-coronavirus-covid-19-infections/clinical-guidance/covid-19-planning-considerations-return-to-in-person-education-in-schools/>)

In addition to serving children, the Inter-Lakes School District is an employer. So, the question regarding opening school physically is not solely focused on students; it also includes the adults who work for the school district. Many businesses and organizations throughout the state have been open and have instituted mitigation efforts to limit risk to employees. Keeping this and the needs of students in mind, the school district undertook efforts to identify mitigation strategies for both learners and employees. These strategies are presented within this document.

Additionally, the majority of survey respondents from parents/guardians and staff supports a desire to have physically in person learning. This includes the majority wanting as close to traditional as possible to the second largest group indicating in person in small groups. In designing the physically in person model, both of these selections were included in trying to design smaller class sizes with limited transitions and co-mingling of students. It is with the identified need to have physically in person learning available for students and our ability to institute risk mitigation practices for the well-being of all occupants that the Inter-Lakes School District proposes an opening plan for the 2020 – 2021 school year which includes a physically in person model for learning.

Additionally, it is also recognized that being physically in person has a greater degree of risk for COVID-19 than isolation at home. The level of comfort with increased risk is a personal one for families and employees. In an effort to provide families with choice, the opening plan for the Inter-Lakes School District includes a virtual option model for learning.

A harsh reality as the School District prepares to open is that it is not a matter if someone within our school community contracts COVID-19; it most likely is a matter of when. This plan has the first identified case moving the physically in person model to remote temporarily while the COVID-19 Decision Making Team reviews the particular incident and works with the New Hampshire Department of Health and Human Services to determine impact on each school community and the next course of action needed on the part of the School District. Flexibility and resilience will be necessary qualities for all in the coming days, weeks, and months.

The physically in person model has four tiers: full in person, modified in person, partial remote, and full remote. It is helpful to think of a dial being turned when looking at these four tiers. The level of activity for the virus, our ability to remain staffed, our ability to acquire necessary supplies, and our ability to transport students are all aspects that contribute to where the dial should be turned over a given period. Sometimes rapid decisions will need to be made and other times decisions that look forward will be made. The makeup of this Team is further shared in this document. As we prepare to open the 2020 – 2021 school year, the proposal is to start with full physically in person; however, as we near opening day, the COVID-19 Decision Making Team will monitor the previously mentioned aspects and if necessary, turn the dial to the most appropriate tier given the circumstances.

Recognizing that:

- It is beyond our control to prevent anyone in our community from getting COVID-19; however, steps can be taken to mitigate the risks while at school and work.
- Although there is a strong desire for things to be the same, the time we are in is not the same; however, working together we can still make this a beneficial and productive time for learning.

With this in mind, the Inter-Lakes School District's objectives for this coming year are to:

- Take active steps to keep our community connected as well as strong physically, socially, and emotionally.
- Mitigate the risks to our school community while physically at work and school.
- Mitigate risks that may impact our ability to provide learning opportunities in an in person physically present model.
- Create a robust infrastructure for learning no matter the format.
- Work together to make this a beneficial, productive, and continuous time for learning.

PROCESS FOR PLAN DEVELOPMENT

The process for developing opening plans for the Inter-Lakes School District began shortly after our school community moved to a remote learning model last spring. At that time, the Administrative Team undertook the task of how school would reopen in the coming year. The Administrative Team includes the Superintendent, Assistant Superintendent, Director of Student Services, Human Resource Director, Director of Innovation and Technology, Facilities Director, Curriculum Coordinator, Director of Guidance, School Principals, and Assistant Principals. As Inter-Lakes Elementary School was in the process of preparing for a transition in leadership, the soon to be new leaders of ILES joined the work prior to assuming their new responsibilities. Major drivers such as flexible learning models and operations given physical constraints were put in motion. Our team undertook the tasks to:

- build the infrastructure needed to provide flexible learning models, that use high quality competency-based learning instructional design practices and incorporate the use of a robust learning management system;
- provide differentiated professional learning pathways for high quality competency-based learning instructional design practices and use of a learning management system to support these practices and flexible learning models; and
- complete an analysis of what would be required if we physically reopened school using the guidance from the State of New Hampshire that was in place in early spring limiting group size to ten (10) people and what would it look like if that size expanded.

Other areas of focus included human resources, facilities, supplies, transportation, and food services. Each area was looked at through the lenses of compliance with regulations, recommendations from reputable organizations, mitigation of risk, social, emotional and physical needs of our students and staff, and what we learned from stakeholders as acquired through listening sessions and surveys. In June four (4) listening sessions were scheduled with staff and two (2) with families. In early July, families and staff were surveyed regarding present level of preferences and perceptions for the upcoming school year. Reopening guidance was released from the Department of Education on July 14. The Inter-Lakes School District was already well underway and primed for presenting opening plans. The guidance was reviewed and recommendations were aligned with the most current information.

Then, the Administrative Team met with representatives of the Inter-Lakes Education Association and Inter-Lakes Support Staff Association prior to review and discuss draft recommendations, which resulted in the next iteration of planning. Prior to finalizing a plan for opening, possible recommendations as well as the process for approving opening plans were shared with all staff and families. Included in this process was an Inter-Lakes School Board Work Session that was dedicated to the School Board learning of the draft recommendations and corresponding rationale for such recommendations; this session was live streamed for the public. Immediately following the School Board Work Session, six (6) sessions were offered to families, two (2) per school, which included the school principal and superintendent, with a goal of providing school specific information on the opening proposals. Each opportunity for feedback along the way contributed to an evolution that ultimately resulted in the proposed plan to the Inter-Lakes School Board. It is a dynamic plan that will require adjustments as society responds to the pandemic and the needs of our community and learners change. The final plan will be approved by the Inter-Lakes School Board.

SURVEY RESULTS

Eight hundred forty-four (844) responses were returned from families and one hundred seventy-one (171) were returned for staff. These responses reflected a strong desire to have physical in person learning as an option for the coming school year. Additionally, the responses reflected the need to offer choice to families in order for them to make the best decision possible for their children given the present circumstances. Survey results are posted on the School District website.

HEALTH

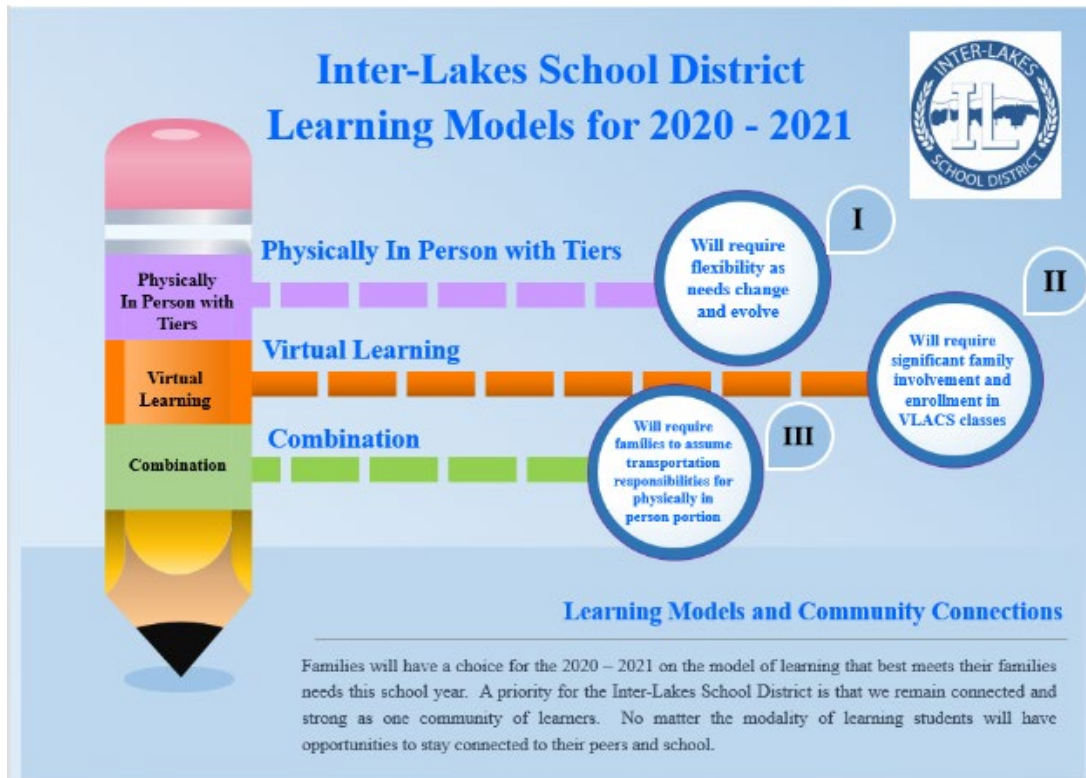
As the pandemic is a public health issue, the school district will align all aspects of health to the protocols and recommendations as provided by the New Hampshire Department of Health and Human Services. The superintendent, school principals, and school nurses are in regular communication regarding potential developments and meet weekly to monitor and adjust plans and responses.

- An area in each school has been established to isolate sick individuals from well individuals receiving health care support.
- The NHDHHS has established protocols to intervene appropriately if someone is suspected of having COVID-19 and protocols to address a course of action if someone has symptoms that align with COVID-19. These protocols may be dynamic. Throughout the course of the year, the school district will continuously align to the most current protocols as determined by NHDHHS. Current protocols can be found in Appendix A.
- School nurses must be provided with great flexibility for decision making throughout the course of the school year.
- Incidents of fever will be addressed through the school nurse working with the family and the family's physician. Determination of when the child can return to school will rest with the school nurse as guided by NHDHHS.

MODELS FOR LEARNING

Schools in the Inter-Lakes School District will open on September 8, 2020 with three learning options for families:

- I. Physically in person learning at school with tiers;
- II. Virtual learning which will include the use of Virtual Learning Academy Charter School for academic programming; and
- III. Combination of physically in person learning and virtual learning.



At the elementary level, the physically in person classes for the combination model will be limited to English Language Arts and/or mathematics classes only. At the middle/high school levels, the physically in person classes will be open to all classes available at the student's grade level. In order to effectively address possible transitions from one learning environment to another, specific entry/exit periods have been identified to provide families an opportunity to adjust their selection.

Prior to the start of the school year, each student will need to be registered for the model of learning for the first learning cycle.

Model of Learning Transition Points from Virtual to In-Person	
Elementary Level	Middle/High School Levels
11/20/2020; 3/12/2021	11/6/2020; 1/22/2021; 4/2/2021
Model of Learning Transition Points from Virtual to In-Person	
Transition periods to be determined.	

Inter-Lakes Virtual Learning Academy

Students who are registered for this option continue to be students in the Inter-Lakes School District. Additionally, they will remain assigned to their school of record. In order to strengthen our ability to successfully support this option for families, Mr. Hillger, Principal of Sandwich Central School, will assume the additional responsibility of serving as Principal of the Inter-Lakes Virtual Learning Academy. The assignment of this leadership oversight will be to ensure that our learners receiving instruction in a virtual environment continue to be connected to their peers and school community. This continued connection and sense of community are priorities no matter the learning model selected.

Academic coursework will be provided through the instructors and programming offered through the Virtual Learning Academy Charter School. Additional staff will be assigned to support learners enrolled in virtual learning; at this stage, this includes one (1) elementary teacher assigned to support learners in grades K – 6 and one (1) non-teaching position assigned to support learners in grades 7 - 12. Other highlights for this option:

- Students enrolled virtually, if eligible, will receive special education and 504 services. These services will be managed and provided by Inter-Lakes School District staff.
- Guidance services will be provided by Inter-Lakes School District staff.
- Required materials necessary for learning through Virtual Learning Academy Charter School will be provided by the Inter-Lakes School District.
- Students enrolled virtually, if eligible, may participate in athletic and co-curricular activities.

Physically In Person Model with Tiers

The physically in person model has four (4) tiers, which are outlined below. The activity of the virus and the impact of it on our ability to operate in a physical model will determine if the tier needs to be adjusted. Remote is defined in this case as working from home and using the school district's learning management system to access instruction from the learner's in person educators.

Full Physically In Person

- All staff are physically in person on a daily basis.
- All students are physically in person on a daily basis.

Modified Physically In Person

- All staff are physically in person on a daily basis.
- Reduced student attendance; the physically in person students will be broken into groups that will rotate on an established schedule unless needs warrant a student being in both groups. The group of students not physically present will have expectations for learning as assigned by the teacher for the time when they are not physically present.

Partial Remote Learning for Physically In Person

- Some staff are physically in person while others work remotely; building principals will determine which staff need to be physically present.
- Some students are physically in person based on learning needs and/or other special circumstances; the decision for who will be in attendance rests with the building Principal or the Director of Student Services.

Full Remote Learning

- All staff are remote; staff may still access school buildings in order to complete their responsibilities.
- All students are remote.

Learning Management System

Schoology will be used regularly throughout each classroom (exceptions may apply to primary grades). This important cornerstone for learning will provide continuity for learning no matter the model of learning in place. The regular use will ensure that students have guiding experiences to build their proficiency with using this online tool. Ongoing sessions on Schoology will be provided for parents/guardians in order to support learner use when in a remote setting.

DECISION MAKING

Inter-Lakes School District will establish a COVID-19 Decision Making Team to undertake the task of making decisions about which tier the School District should enact for the physically in person model throughout different parts of the school year. This Team will include the following:

- School Board Members, Superintendent, Assistant Superintendent, School Principals, School Nurses, Human Resources Director, Facilities Director, Teacher Representative, Support Staff Representative, Community Representative, Parent Representative, Student Representative and Paid Consultant with Appropriate Background in Health

The School Board Chair will determine the School Board representatives; remaining representation will be the responsibility of the Superintendent. This Team will monitor our geographic area and School District specific data on current and cumulative cases of COVID-19 as provided by the New Hampshire Department of Health and Human Services. Based on the activity level of the virus, the in person learning physically at school model may adapt, which could include some or possibly all of our in person learners having periods of remote learning as deemed necessary. A decision to shift from in person to remote learning will be based on recommendations from the New Hampshire Department of Health and Human Services and/or if the impact of an outbreak has reduced our ability to maintain established operations. In such a case as the latter, a school closing may be needed to provide recovery time prior to starting remote learning. Times when a rapid decision to change the tier for the physical in person model may be required. At these points, the Superintendent will have the authority to act.

Calendar for Decision Making

In an effort to “look down the chess board,” the COVID-19 Decision Making Team will make a decision regarding the upcoming month prior to the 15th of every month. The only exception is in the case of October, when the decision will be made by September 20th to allow for additional feedback on the how the opening in person model is working. It is important to note that although this is an indication of what tier will be in place for the upcoming month, circumstances may alter that decision.

COMMUNICATION

Communication with our families and staff is critical to ensure everyone is able to make the most informed decisions for themselves and their families. A dashboard will be developed and will be available on the school district's and each school's websites; the dashboard will provide a link to the Department of Health and Human Services, geographic data, and school specific information regarding confirmed cases of COVID-19. A case of COVID-19 is considered confirmed when the school is notified by the New Hampshire Department of Health and Human Services. Additionally, if the New Hampshire Department of Health and Human Services will be conducting contact tracing for a group of learners/staff, parents/guardians and staff impacted will be notified by the school district. The Superintendent and school principals will be responsible for development and implementation of communication plans.

MITIGATION EFFORTS

Attendance

All members of our school communities will need to stay home when they have any health related symptoms. If students/staff present ill at school/work, they will be sent home. **It is imperative that people stay home if they are symptomatic and/or ill.** It is recognized that this will increase absenteeism for students, staff, and contracted services providers, such as school bus drivers. Additionally, it is recognized that a teacher may have symptoms that prevent them from being physically present at school and yet, they may be healthy enough to work. In this instance, the teacher may remote into the classroom to provide continuity for learning while a substitute provides supervision and supports that require a physical presence. Additionally, students may be in a similar situation where they are out of school but are still able to engage in learning; teachers will provide work (as we have always done) to help students maintain continuity in their learning.

Travel

Any staff/student who has traveled on public transportation (beyond our local school buses) anywhere and any staff/student who has traveled outside of New England will be required to remain outside of work/school for a two week period. It is our hope that this time will be used to self-quarantine at home. Staff members are encouraged to discuss their plans with their supervisor in advance of such travel. If state guidance evolves in this area, the School District will adjust accordingly.

Health Screening

All staff and students will be required to complete a health screening assessment at home prior to attending work/school. An online tool will be used for staff and families to indicate they have completed the screening prior to arrival and that they are cleared to enter work/school. If a staff member/family is unable to complete the screening online, supervisors for staff and school nurses for students will work to develop an alternative method for indicating screening is complete and they are cleared to come to work/school.

Face Coverings

In order to mitigate risk, all students and staff will need to wear a cloth face covering or transparent face shield with drape. Such coverings will be worn on the campus including indoors and outside as well as on school buses. If outdoors and with adult discretion, and if physical distancing of six (6) feet or more is achieved, then the coverings can be removed to provide a break. If inclement weather prevents this, then larger spaces within the school buildings that support social distancing

of six (6) feet may be utilized. Information on the proper use of face coverings will be promoted throughout the classroom and school. No masks/coverings with valves.

It should be noted that due to developmental and health needs, some members of our school community may not be able to utilize face coverings. A decision to exempt someone from use of a face covering will be made in the case of students through the special education or 504 process with appropriate documentation to support exemption. In the case of an employee, the employee will work with the Human Resource Director to provide appropriate documentation to support such an exemption.

Class Environment

In order to support distancing and minimize interactions, a goal for class sizes will be an upper limit of fifteen (15) students, if possible. Additionally, the goal is to limit interactions and school schedules will be adjusted as a result. However, some staff (namely, our specialists in physical education, art, music, etc.) will have a greater number of contact with the school community.

A minimum of three (3) feet (see Appendix B) will be used within the classroom for spacing of student work areas. Work areas will be arranged so that they face one direction and will be kept clear to assist with cleaning. Each student and staff member will have their own work space. Items will not be shared with the exception of such things as books (like library books), machinery, and lab equipment. Protocols from the industry standards will be used for these mixed use materials.

Hygiene

Frequent hand washing practices will be put in place within each classroom. In spaces without sinks, hand sanitizer will be provided. Time to clean hands prior to eating will be scheduled. Additionally, good hygiene practices will be promoted throughout the classroom and school.

Visitors

Our goal is to continue to welcome families and visitors to our school communities; however, this will be done as much as possible through remote options. Efforts will be made to schedule parent/guardian meetings, including IEP/504 meetings, through video/phone conferencing. If an individual needs to visit any of our school related buildings, they will need to complete a health self-assessment in advance of being present, only attend in person if they are not experiencing any symptoms associated with COVID-19, and wear a cloth face covering or transparent face shield with drape upon entry. Additionally, when parents/guardians are dropping off/picking up their children, they will need to wear a cloth face covering or transparent face shield with drape.

Building Protocols

School Principals will implement practices that mitigate risk. This includes scheduling and protocols for moving through the building, use of restroom facilities, etc. Building specific information will be communicated to families.

Schedules

Each building will be working to build schedules that support limiting class size and limiting transitions. Additionally, some staff may be shifted to address class size. The desire to have lower class sizes as a priority means that there will be less elective offerings provided through the Inter-Lakes School District this year.

FACILITIES

Cleaning

The priority for cleaning is to keep occupants in a healthy environment with the risk of illness mitigated through cleaning and disinfecting efforts. Therefore, cleaning and disinfecting certain elements during the day will be increased with the full return of learners and staff. Vital Oxide has been selected as the chosen disinfectant for the School District. At full strength, Vital Oxide is a hospital/institutional grade disinfectant that has a triple zero health hazard rating. A zero is interpreted in this scale as “minimal.” Vital Oxide is also effective at a 1:9 dilution rate, which makes Vital Oxide a great sanitizer that is rated safe for all ages within our school buildings. Information on Vital Oxide can be found in Appendix C.

Each space will be cleaned daily by the custodial staff following guidelines from the Center for Disease Control and Prevention. High use elements like door handles, switches, and bathrooms will have additional cleanings throughout the day. The custodial staff will do deep cleaning and disinfecting at night, which has been incorporated into our existing cleaning schedule. In order to add layers of mitigation throughout the course of the day, students and staff will need to assume responsibility for maintaining and sanitizing their general work spaces. It is recognized that developmentally students will range in their levels of independence with this responsibility; however, it is a critical skill and one that is necessary to be incorporated into our teaching at this time.

Classroom Cleaning Materials and Personal Protective Equipment

Each classroom will have a container supplied with paper masks, tissues, cleaning supplies, and gloves; custodial staff will ensure that this container remains stocked.

Heating Ventilation Air Conditioning (HVAC)

Even the most robust HVAC system cannot control all airflows and completely prevent dissemination of an infectious aerosol or disease transmission by droplets or aerosols. An HVAC system's impact will depend on source location, strength of the source, distribution of the released aerosol, droplet size, air distribution, temperature, relative humidity, and filtration. Furthermore, there are multiple modes and circumstances under which disease transmission occurs. Thus, strategies for prevention and risk mitigation require collaboration of building mechanicals and human behavior. All of our school facilities have filtered mechanical ventilation. The Inter-Lakes School District filters with the highest MERV rated filters that the existing individual units can be paired with. The ventilation schedule and HVAC systems will be set to provide 100% outdoor filtered air exchanges as often as mechanically possible. This will provide the most dilution of the air in any given space, increasing our mitigation efforts to the fullest capabilities of these systems.

Use by Outside Groups

Inter-Lakes School District recognizes the incredible support our communities provide. The partnership of providing access to our facilities by outside community groups has been valuable to all parties involved. It is also recognized that the auditorium is a community auditorium with the operations overseen by the School District. The stress on all systems within the School District is at an all-time high. Therefore, use of our facilities by non-School District entities from present - June 22, 2021 will be limited to outdoor areas as they provide the least amount of demand on our custodial crews. If non-School District entities using the outside areas do not adhere to School District practices regarding use during the pandemic, permission to use will be revoked. A decision regarding use of indoor facilities after June 22, 2021 will be made by April 15, 2021. ***The School District looks forward to the time when all groups will be welcomed back.***

ATHLETICS AND CO-CURRICULAR ACTIVITIES

The importance of maintaining the wellness of our school communities has never been more apparent than now. Wellness includes all aspects of being human (social, emotional and physical needs). It is with this in mind that our School District has strived to reach a reasonable balance of mitigating risks associated with the virus and the risks to students when they are not in a productive learning environment. Additionally, at the middle/high school level, co-curricular and athletics provide important connections and outlets for students. It is recognized that increasing one's exposure to another group of individuals may increase one's risk of being exposed to COVID-19, which may consequently result in serious illness and may impact others the individual comes in contact with in other circumstances. Upon careful reflection and after learning that if the School District does not run competitive sports this school year, many students will most likely participate in traveling teams far and wide beyond our area, which may put our school and local communities at higher risk, the decision has been made to offer athletics and co-curricular activities as described below.

- The Inter-Lakes School District will follow the New Hampshire Interscholastic Athletic Association (NHIAA) guidance for athletics this year with the caveat that if they do not reduce the places we typically play, Inter-Lakes may elect to forfeit certain games if the area the School is expected to play has a current outbreak and/or has an infection rate that indicates a higher activity rate than our local area. The Superintendent, Principal, and Athletic Director will collaborate on such a decision. Also, protocols will be put in place regarding number of spectators as determined by the School District and live streaming options will be investigated (not guaranteed) for home competitions. Additional layers of health screening will be required for participating athletes.
- Co-curricular activities will continue; however, recommended guidance for each area of specialty as provided by health and other professional organizations will need to be followed. Additionally, performance based activities will follow the same guidelines for spectators as established for athletics. Virtual participation will be strongly encouraged whenever possible for performances and in lieu of traveling to other schools.

It is critical that all members of our school and greater community understand although the School District is supporting continued participation in athletics and co-curricular activities, the reality is that like everything else, athletics and co-curricular activities will look different.

TRANSPORTATION

School transportation provides many challenges ranging from congregating at the bus stop to increasing contact with others on the school bus. **If families are able to transport their children to school or carpool, these may be the best options to mitigate risk; however, it is recognized that for a multitude of reasons these options will not work for all families.**

Parents/guardians will be required to sign up in advance for school transportation this year. Additionally, special requests for transportation may not be able to be accommodated this year. This includes transportation to aftercare programs. Precedence needs to be given to transportation from home to school and school to home. The reason for this is that ridership on the school bus must be limited and great efforts will be made to adjust bus routes to accommodate this priority, which may not allow for other riders who are not assigned to that bus route.

The School District will be striving to keep each bus with two (2) students per row; some opportunities based on family travelers may afford increasing that number. In order to reach this

goal, some routes will require double runs, which will create a waiting period at the end of the school day for students on bus routes with two (2) runs.

School buses will be loaded with riders going towards the rear of the bus upon entry and will unload from the front of the bus to exit. This is to try and limit (not eliminate) crossing over of riders.

Prior to riding the school bus, parents/guardians will need to indicate as outlined in the health screening segment of this document that their children have successfully met the requirements of the screening; students who have symptoms and/or are ill, NEED to stay home. Parents/guardians will be responsible for maintaining social distancing and for the use of face coverings at the bus stop. Students will need to wear a cloth face covering and/or transparent face shield with drape on the school bus. School buses will be treated with Zoono (see Appendix D) and will be cleaned on a daily basis.

FOOD SERVICE

Access to food through the school lunch program will be available to all members of the school community no matter the learning model. Specifics on how to sign up and how food will be acquired will be shared with families prior to the start of the school year.

Breakfast and lunch will be with a student's assigned class and may be consumed in the classroom or outdoors. Meals will be packaged individually, which may limit the scope of the menu.

TIME OUTDOORS

Time outdoors will be prioritized and school schedules will be designed to capitalize on such time. Parents/guardians should assume their children will be outside for portions of the school day and should ensure that they are dressed appropriately for all weather conditions. Someone once said, "There is no bad weather, just bad clothing." Our hardiness as communities located in Central New Hampshire will be put to good use this year as we welcome and embrace the outdoors!

SOCIAL & EMOTIONAL WELLNESS

A team of various stakeholders will be led by our Guidance Director and working with the expertise of Lynn Lyons, Licensed Social Worker to develop a plan to support the social and emotional wellness of our school communities as we transition back to school and throughout the school year.

HUMAN RESOURCES

A letter from the Human Resource Director has been sent to all staff requesting that they make contact with Human Resources if there are issues related to their ability to return physically in person to work. Human Resources will work with the individual to determine what course(s) may be available to the individual.

PERSONNEL

A Memorandum of Understanding will be sought with the ILA and ILSSA to limit the evaluation process this year to new staff or staff who may require assistance. Additionally, discussions will take place regarding increasing the current number of days allotted to sick banks. As needs arise, further conversations may be needed.

(Excerpts from New Hampshire Department of Education – NH Grades K-12 Back-to-School Guidance, July 2020)

2. Follow Guidance from NH Department of Health and Human Services,

Division of Public Health Services (DPHS)

Public health protocols play the primary role in student and staff safety. Such protocols are subject to change as circumstances on the ground change, so it is important to continually monitor communications from NH public health officials.

a. Staff, Students, and Visitors Screening and Absenteeism

1. Monitor staff and student absenteeism to identify illness patterns.
2. Develop a process for screening staff, students, and visitors daily for symptoms of COVID-19 or risk factors for exposure prior to entering the educational facility (see screening questions below).
 - For staff and visitors, screening should occur on educational facility grounds just prior to, or upon entry of, the educational facility.
 - For students, the parents/guardians should be asked to screen their children for symptoms or risk factors daily before allowing the child to travel to school. A checklist of symptoms and risk factor screening questions should be provided to the parents/guardians so they can clearly identify what symptoms and risk factors warrant the student to stay at home.
 - Educational facilities can also consider implementing a second screening process for students (focused on asking about symptoms of COVID-19) at the educational facility—either upon entry to the facility, or conducted by the teacher as students arrive to their first class of the day.
3. COVID-19 symptom and risk factor screening should involve asking if the individual:
 - Has any symptoms of COVID-19 (list/call-out individual symptoms for screening process)?
 - Has had close contact with someone who is suspected or confirmed to have COVID-19 in the prior 14 days?
 - Traveled in the prior 14 days outside of New England (outside of NH, VT, ME, MA, CT, RI)?
 - (Note: because the epidemiology of the COVID-19 pandemic is rapidly changing, school officials should check with NH DPHS and the NH DOE to ensure that schools are using the most up-to-date travel risk factor screening questions, which can change over time)
4. Person(s) with any new or unexplained COVID-19 symptoms (even if only mild symptoms), those who report close contact with someone suspected or confirmed with COVID-19, or those reporting travel risk factors should not be allowed into the transportation vehicle or facility:
 - Symptomatic persons should be instructed to contact their health care provider to be tested for COVID-19 and self-isolate at home.
 - Asymptomatic persons reporting close contact with someone suspected or confirmed with COVID-19, or who report traveled-related risk should self-quarantine for 14 days from their last exposure or return from travel.
5. Person(s) with suspected or confirmed COVID-19 must stay out of education programing until symptom-based criteria are met for discontinuation of isolation.

6. Staff should be educated about the symptoms of COVID-19, and should monitor students for any signs/symptoms of illness. Staff should be instructed on how to manage any student identified with symptoms of COVID-19.
 - Any person that develops symptoms of COVID-19 while at the education facility should be masked if they are over two years of age, removed from close contact with others and be immediately sent home by private transportation.
 - The school nurse should record the symptomatic person's temperature and perform a brief assessment of the person's complaints or symptoms (this becomes important for the purposes of a public health investigation if the person is confirmed to have COVID-19). Any brief assessment can be performed from at least six feet away with the nurse wearing a surgical face mask. If the school nurse needs to be in close contact with the individual (within six feet), they should have personal protective equipment (PPE) on hand. See NH Division of Public Health Services (DPHS) guidance for the most up-to-date recommendations for healthcare providers.
 - If the individual requires immediate medical care, call 911 for an ambulance and inform emergency medical services about the individual's symptoms.
 - Call NH DPHS at 603-271-4496 for additional guidance.
7. All school personnel, including school nurses, teachers and administration, should know how to respond in the face of a possible infection, including who to contact and how to make that contact. Plan to have an isolation room or area that can be used to isolate a sick child or staff away from the other children and staff. Any person with suspect or confirmed COVID-19 should be reported immediately to public health by calling 603-271-4496 (after-hours call 603-271-5300 and ask for the public health nurse on call).
8. Communicate with staff, educators, and families what symptoms to look for in students. Including symptoms of Multisystem Inflammatory Syndrome in children (MIS-C). Staff should report any personal symptoms of COVID-19 or close contact to a person with COVID-19 to a supervisor or school administrator.

c. Reporting and Investigating COVID-19 in the Educational Facility

1. Any person with suspected or confirmed COVID-19 should be reported immediately to public health by calling 603-271-4496 (after-hours call 603-271-5300 and ask for the public health nurse on call).
2. Public health will conduct a detailed investigation to identify people who may have been in "close contact" with a student or staff member diagnosed with COVID-19 during their infectious period. As part of the public health investigation, investigators seek to identify close contacts starting two days before the person became symptomatic or tested positive for COVID-19 (if asymptomatic).
3. "Close contact" for the purposes of the public health investigation in New Hampshire is defined as a person being within six feet of the individual diagnosed with COVID-19 during their infectious period for 10 minutes or longer. Depending on individual circumstances, and on a case-by-case basis, public health may identify other individuals considered at risk for exposure.
4. Any person who is identified as a close contact or at risk for exposure to COVID-19 based on the public health investigation will be required to quarantine for 14 days from their last day of exposure. Depending on the specific circumstances, this may involve quarantine of only specific individuals (e.g., those sitting next to a person with COVID-19 in a classroom), but

could include whole classes (depending on degree or likelihood of close contact, classroom size, age of students, etc.); this will be assessed on a case-by-case basis by public health.

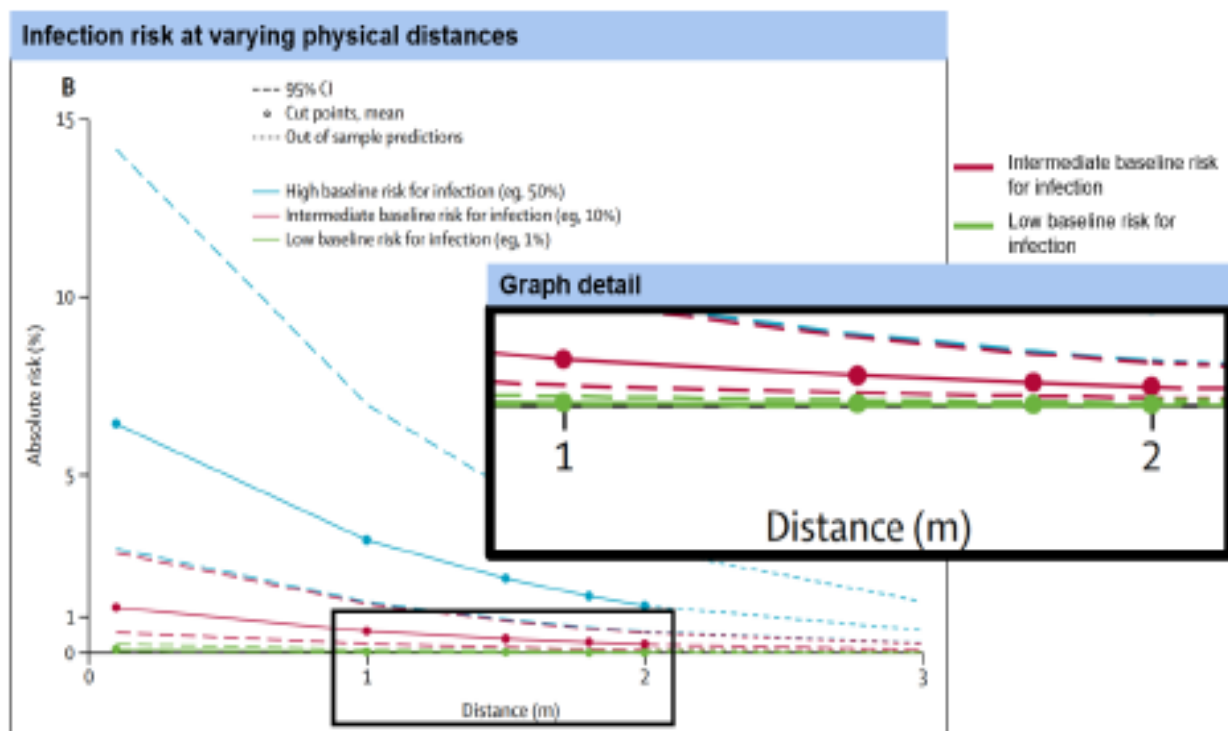
5. NH public health will work with schools to collect the necessary information (through the schools point-of-contact), interview the person diagnosed with COVID-19, and potentially other staff involved to gather information to make an informed decision about risk and need for people to quarantine.
6. Public health will also assist with school and student/family communication.

(Excerpts from Massachusetts Department of Elementary and Secondary Education – Initial Fall School Reopening Guidance, June 2020)

Risk of infection at varying physical distances

Key finding: in intermediate- and low-risk settings, the risk of infection is similar at one meter (approximately three feet) and two meters (approximately six feet) distances. Experts suggest schools would be considered low to intermediate risk, especially with additional protections (e.g., masks), and that the risk of infection in these settings at both one meter and two meters is low.

Note: the risk of infection at various physical distances was modeled based on a meta-analysis of data from a group of coronaviruses (COVID-19, MERS, SARS). These are estimates of the risk by type of setting, not the risk to different types of individuals.



Source: Chu, D.K., Akl, E.A., Duda S., Solo K., Yaacoub S., Schunemann H.J. et al. (2020) Physical distancing, face masks, and eye protection to prevent person-to-person transmission of SARS-CoV-2 and COVID-19: a systematic review and meta-analysis. The Lancet.



January 1, 2019

Safety Data Sheet

Vital Oxide RTU

Section 1: Product and Company Identification

Product Name	Vital Oxide RTU	Aqueous Oxidant
SDS No.	VO010118	
Manufacturer/Distributor	Vital Solutions, LLC PO Box 2299 West Palm Beach, FL 33404 (561) 848-1717	
Phone Numbers		
Medical Emergency	(800) 222-1222	

H	0	
F	0	
R	0	
PE	--	

Section 2: Hazards Identification

2.1 GHS Classification: This material is not considered hazardous by the OSHA Hazard Communication Standard 2012 (29 CFR 1910.1200)

Remarks For full text of Hazard- and EU Hazard-statements: see SECTION 16.

Emergency Overview: Colorless liquid with mild fresh odor. Avoid contact with eyes. Keep out of reach of children.

HMIS Rating: PPE: 0	Health: 0	Flammability: 0	Reactivity: 0
----------------------------	------------------	------------------------	----------------------

GHS Classification: This material is not considered hazardous by the OSHA Hazard Communication Standard 2012 (29 CFR 1910.1200)

Potential Health Effects**2.2 Potential Health Effects**

Eye Contact: Eye contact may cause mild eye irritation with discomfort.

Skin Contact: Does NOT cause skin irritation and the product is NOT skin sensitizer.

Inhalation: Does NOT cause any respiratory irritation. If consumer product accidentally contacts strong acids in restricted ventilation area, avoid breathing the vapors and allow adequate time for the vapors to disperse before re-entering the restricted area.

Ingestion: Non-Toxic **Carcinogenicity Information:** IARC, NTP, OSHA, and ACGIH list none of the components present in this material at concentrations equal to or greater than 0.1% as carcinogens.

Hazard statements: Eye contact may cause mild eye irritation with discomfort.

Precautionary statements

Precautionary statements – prevention: P234 Keep only in original container, or properly labeled second container

Precautionary statements – response

P390 Absorb spillage to prevent waste

Section 3: Composition / Information on Ingredients

Ingredients	CAS Number	Wt %
Oxychlorine Compounds	Mixture	0.200
n-Alkyl Dimethyl Benzyl Ammonium Chloride	68391-01-5	0.125
n-Alkyl Dimethyl Ethylbenzyl Ammonium Chloride	85409-23-0	0.125
Inert Ingredients	Mixture	99.55

At these concentrations none of the ingredients are known to pose any hazards to human health.

Section 4: First Aid Measures**Inhalation**

Does NOT cause any respiratory irritation. If consumer product accidentally contacts strong acids in restricted ventilation area, avoid breathing the vapors, and allow adequate time for the vapors to disperse before re-entering the restricted area.

Skin Contact

Does NOT cause skin irritation.

Eye Contact

In case of contact, flush eyes with plenty of water.

Ingestion

Non-toxic. Give a glass of water.

Section 5: Fire Fighting Measures

Flammable Properties: Flash Point: Not Available (Non Flammable)

Flammable Limits: Lower Flammable Limit: Not Established

Burn Rate: Unknown

Upper Flammable Limit: Not Established

Flammability Classification: Non-Flammable liquid **Auto ignition Temperature:** Not Established

Hazardous Combustion Products: Thermal or other decomposition may yield chlorine dioxide or chlorine.

Extinguishing Media: N/A (Non-Flammable liquid) **Additional Considerations:** None

FIRE FIGHTING INSTRUCTIONS: Non-Flammable liquid

NFPA Rating: **Health:** 0 **Flammability:** 0 **Reactivity:** 0 **PPE:** None

Section 6: Accidental Release Measures**Spill Clean Up**

No special cleanup measures are required for the consumer product. To avoid the possibility of "bleaching" the spill should be absorbed with paper towels, and the area rinsed with clean water.

Accidental Release Measures

Spills are slippery and should be cleaned up promptly.

Section 7: Handling and Storage

Handling: Keep away from heat and strong acids. Do not ingest. Keep container closed. Use only with adequate ventilation.

Storage: Keep container tightly closed and sealed until ready for use. Keep container in a well-ventilated place. Do not store above 120°F or near fire or open flame. Store large quantities in buildings to comply with OSHA 1910.106. Do not transfer contents to bottles or other unlabeled containers. Do not reuse empty containers. Keep out of reach of children.

Incompatible materials: Strong acids

Special Packaging Materials: None

Section 8: Exposure Control/ Personal Protection

Engineering Controls: Use in adequately ventilated areas.

Personal Protective Equipment:

Eye/Face Protection: Not required for consumer product.

Skin Protection: Not required for consumer product.

Respirators: None required for normal use. If consumer product accidentally contacts strong acids in restricted ventilation area, Avoid breathing the vapors, and allow adequate time for the vapors to disperse before re-entering the restricted area.

Exposure Limits:

Oxychlorine Compounds:**n-Alkyl Dimethyl Ethylbenzyl Ammonium Chloride:**

PEL (OSHA): Not available	PEL (OSHA):	Not available
TLV (ACGIH): Not available	TLV (ACGIH):	Not available

n-Alkyl Dimethyl Benzyl Ammonium Chloride:

PEL (OSHA): Not available
TLV (ACGIH): Not available

Section 9: Physical and Chemical Properties

Appearance:	Colorless liquid	Odor:	Mild-Fresh
Physical State:	Liquid	pH:	8 - 9
Boiling Point (°F):	212	Solubility in Water:	100%
Freezing Point (°F):	32	Vapor Pressure (mm Hg):	Not Available
Volatile Organic Compounds (VOC):	None	Evaporation Rate:	Less than Ether
Specific Gravity:	1.003 @ 68°F (20°C)	Density (lb/gal):	8.40 @ 68°F (20°C)

Section 10: Stability and Reactivity

Chemical Stability: The product is stable.

Incompatibility with other Materials: Strong acids

Conditions to avoid: Contact with strong acids

Hazardous Polymerization: Will not occur.

Hazardous Decomposition Products: Thermal or other decomposition may yield chlorine dioxide or chlorine.

Section 11: Toxicological Information

TOXICITY TESTING – ACUTE Inhalation – Studies with Wistar Albino rats exposed to a respirable aerosol made from a solution of Vital Oxide at a level of 2.08 mg/l for four hours resulted in no deaths and no abnormal necropsy observations. **Eye Contact** – Studies with New Zealand white rabbits showed this product is a very mild ocular irritant; mild conjunctival irritation was observed, but cleared within 24 hours. **Skin Contact** – Study of dermal toxicity in New Zealand white rabbits showed the product to be non-toxic: Dermal LD₅₀ > 5,000 mg/kg of body weight; Study of dermal irritation in New Zealand white rabbits showed the product is not a dermal irritant. In Dermal Sensitization studies, Vital Oxide was determined not to be a sensitizer. **Swallowing** - Acute oral toxicity in albino rats: Non-toxic LD₅₀ > 5,000 mg/kg of body weight.

EPA TOXICITY RATING – IV This is the lowest category on the scale and is designed for substances that are the least hazardous.

Section 12: Ecological Information

Environmental Hazards: Not data available.

Environmental Fate: Not data available.

Section 13: Disposal Considerations

Waste Disposal: Treatment, storage, transportation, and disposal must be in accordance with applicable Federal, State/Provincial and Local regulations.

Section 14: Transport Information

Shipping Information: Not regulated by DOT, IMO/IMDG and IATA/ICAO for ground, air or ocean shipments.

Section 15: Regulatory Information

U.S. Federal Regulations:

TSCA: All components appear in TSCA Inventory

OSHA: Refer to Section 8 for exposure limits.

CERCLA SARA Hazard Category:

Section 311 and 312: This product has been reviewed according to the EPA "Hazard Categories" promulgated under Sections 311 and 312 of the Superfund Amendment and Reauthorization Act of 1986 (SARA Title III) and is considered, under applicable definitions, to meet the following categories: None

Section 313: This product contains following substances subject to the reporting requirements of Section 313 of Title III of the Superfund Amendments and Reauthorization Act of 1986 and 40 CFR Part 372: None

State regulations: State Right to Know information is not provided.

California prop. 65 (no significant risk level): None

International Regulations:

Canadian WHMIS: Not controlled

Canadian Environmental Protection Act (CEPA): Additional information available upon request.

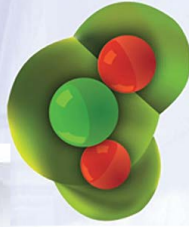
EU Regulations: Additional information available upon request.

Section 16: Other Information

HMS Rating: **Health:** 0 **Flammability:** 0 **Reactivity:** 0 **PPE:** None

The information is furnished without warranty, expressed or implied, except that it is accurate to the best knowledge of Vital Solutions, LLC. The Data on this sheet related only to the specific material designed herein. Vital Solutions, LLC, assumes no legal responsibility for the use or reliance on this data.

End of SDS



OXYGEN POWER

Vital Oxide Uses the Power of Oxygen to Kill Harmful Bacteria & Viruses while Removing Mold & Mildew

Unique in Nature – Selective Oxidation

The chlorine dioxide molecule has one chlorine atom and two oxygen atoms and this combination creates a molecular free radical – a magnetic like attraction that seeks out electron donors and selectively oxidizes harmful bacteria and mold.

The Environmentally Sound Alternative to Chlorine Bleach

Although chlorine dioxide (CLO2) has chlorine in its name, its chemistry is radically different from that of chlorine itself. Technically speaking both chlorine and CLO2 are oxidizing agents. Yet these fundamentally different chemistries react in distinct ways with organic compounds resulting in very different by-products.

Chlorine produces harmful by-products (THM) trihalo-methanes and (HAAS) haloacetic acids which are linked to cancer. CLO2 is not a metabolic toxin and will not aid in developing antibiotic resistant bacteria.

The History

CLO2 has been recognized for its powerful disinfecting properties since the early 1900's. It is used by municipalities to purify drinking water. Environmentalists now recommend its use in eco-friendly paper production. Produced on site, these treatments require sophisticated chemical generation equipment and limit practical use to only large scale industrial operations with a shelf life that lasts between a few days and a few hours.

The Breakthrough

VITAL OXIDE is a super effective, ecologically sound cleaner & odor eliminator, with proven broad-spectrum anti-microbial action (USEPA registered #82972-1). Shelf stable and ready to use – no mixing required, just spray, wipe, or fog right from the bottle. Non-irritating to the skin, and not corrosive to treated articles.

MARKETING CONCEPTS and OPPORTUNITIES

- Enlist strategic partners who service existing customers' sanitation, hygiene, food safety, and cleaning product programs.
- Market to service companies who offer remediation, pest control, and sanitation services by adding Vital Technologies service models to ensure healthy environments.
- Direct sales to national chains that centralize purchasing to enhance their current environmental standards in Food Services, Hospitality, Health Care, Transportation, Schools & Universities, Sports & Leisure Activities, Government Agencies protecting first responders, and the general public.

**VitalProducts Corporation is the
EXCLUSIVE SUPPLIER OF
VITAL OXIDE HOSPITAL DISINFECTANT
FOR**

POLICE, FIRE, RESCUE AND EMS



VitalProducts Corporation

PO Box 74
Manasquan, NJ 08736
Phone: 1-800-798-8820
Fax: 1-732-528-1624

Visit Our Web Site:



VitalOxide



Hospital Grade Disinfectant Cleaner Heavy Duty Mold & Odor Control

- ◆ 60-second food contact surface sanitizer for 99.999% elimination of bacteria, including e coli, salmonella, listeria
- ◆ No rinse required
- ◆ Leaves no offensive odor or bad taste
- ◆ Hospital grade disinfectant 100% inactivation of viruses, including H1N1, Hepatitis B & C, and HIV
- ◆ Non-corrosive to treated surfaces

ADVANTAGES

Vital Oxide is shipped Ready To Use (RTU) as a Hospital Grade Disinfectant and may also be diluted using our customizable blending & dispensing system with on-site mixing for multiple applications, including food contact surface sanitization, carpet sanitization, and heavy-duty odor control.

Flexibility

May be applied by spray bottle, mop, fogger, or electro-static sprayer.

Shelf Stable – over one year shelf life.

Ready To Use – no activation step required.

Space Saving Multi-Use – multi-dilution system.

Saves Money – reduced spillage and waste.

Saves Time – employee time required to prepare solutions is greatly reduced.

NSF Certified – no rinse required at any dilution.

Wide Range of Uses

Including hospitals, nursing homes, cruise ships, restaurants, hotels, schools, daycare, sports equipment, kennels, auto detail shops, households & more.

How the System Works

Vital Oxide ships in RTU sizes and in dispenser-ready containers.

Vital Technologies installs the dispenser and Vital Oxide reservoirs.

Vital Technologies visits your facility on a regular basis to replenish the product.

Vital Technologies maintains the dispensing unit to ensure proper functioning.

VITAL PERFORMANCE

Sanitation

- 60 sec. Food Contact Sanitizer (no rinse required).
- 99.999% elimination of bacteria, including e coli, salmonella, listeria.
- Leaves no offensive odor or taste.
- Non-corrosive, safe for treated articles.

Disinfection

- Hospital Grade Disinfection, including complete inactivation of H1N1, Norovirus, Hepatitis B & C, HIV, Legionella, MRSA, Pseudomonas aeruginosa (see full list in testing summary).

Mold

- University and government sponsored studies document long term effectiveness on mold & mold spores, including Aspergillus niger, Alternaria alternata, Penicillium, Stachybotrys.

Odor Control & Cleaning Action

- Odors are completely eliminated on a molecular level, not covered up by masking fragrance or nose numbing chemicals. Effective on tobacco smoke, cooking odors, pet urine, sports equipment.
- Powerful cleaning action that removes organic stains without damage to hard surfaces or fabric.

Easy to Use

- Just spray, wipe or fog right from the bottle.
- Shelf stable & guaranteed to retain over 98% strength for one year.
- Non-irritating to skin – no gloves or protective clothing required.



USEPA
Registered (82972-1)
Hospital Grade
Disinfectant Cleaner



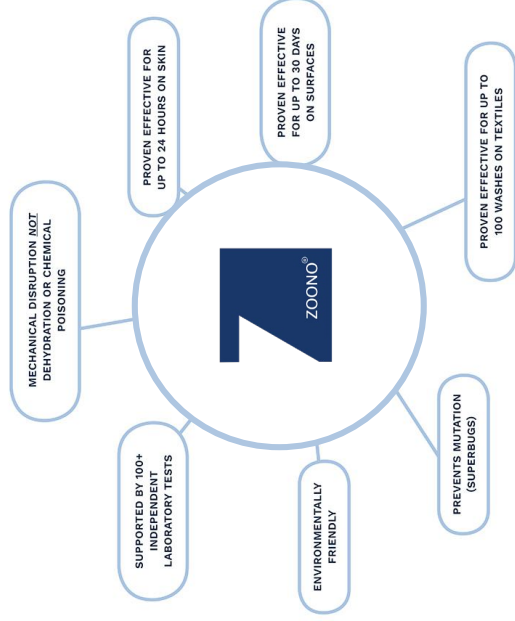
CAUTION: Keep out of reach of children. 5 Gallons

First Student's Recommendation: Zoono Z71™

Based on research, testing and hands-on application, First Student recommends Zoono Z71™ Microbe Shield Surface Monthly Disinfectant

Zoono Z71™ Microbe Shield Surface Monthly Disinfectant

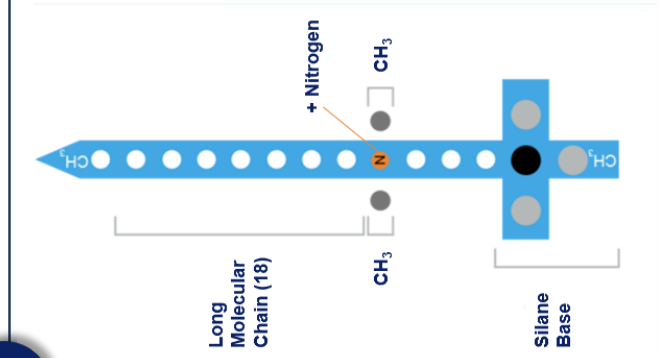
- Bonds to most surfaces, including those found in our vehicles (metal/glass/vinyl/plastic/fabric)
- Disinfects immediately and ensures buses remain virus-free for 30 days
 - Traditional disinfectants only kill current viruses and have no residual effect
- Creates microscopic spikes that kill pathogens that land on the surface, essentially forming an antimicrobial shield
- Destroys viruses mechanically, eliminating the need for harsh chemicals
- Provides error-free usage with sprayer application. No dilution or mixing necessary
- EPA-Registered #83129-1 (List A - Antimicrobials)
 - Pending EPA List N approval



Note: Disinfectant used may vary based on available supply and is at First Student's discretion.

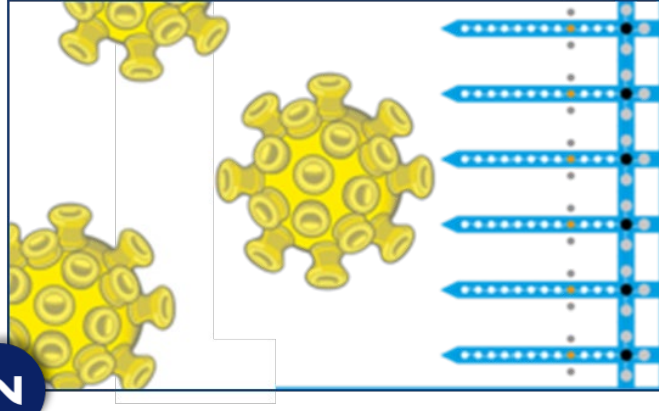
How ZOONO Z71™ Works

1



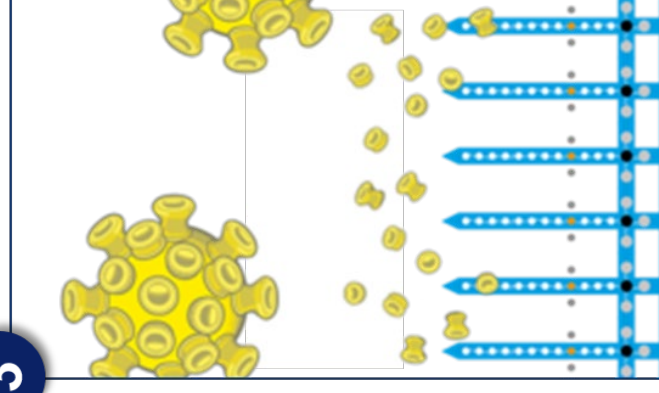
Zono-Z71 leaves behind a mono-molecular layer that permanently bonds to the surface. These antimicrobial molecules bond to the surface, forming a barrier of positively charged microscopic pins.

2



This antimicrobial protective layer goes beyond waiting for viruses to land. They are positively charged to attract negatively charged viruses, like COVID-19, pulling them towards the pins to be killed.

3



The Zono molecule does not diminish in strength in relation to the number of pathogens killed, so it is capable of attacking new bacteria cells again and again – with only a single application.

How ZOONO Z71™ Compares

	Zoono Z71™	Other Disinfectants
How it Works	Physical Disruption	Dehydration or Chemical Poison
Method	Attracts, Pierces, Kills Pathogens	Dehydration or Chemical Infiltration
Durability	Proven Effective for 30 Days	Short-Term Efficacy – Only Minutes
Toxicity	Similar to Vitamin C	Usually Highly Toxic
Ease of Handling	Ready to Use/Easy to Use	Requires Mixing/Most Contain Poisons
Mutation/Superbugs	Resistance Impossible/No Mutation	Promotes Development of Superbugs
Environment	Safe to Use/No Environmental Issues	Not Good for the Environment
Proof of Efficacy	100+ Test Results from Labs Around the World	Usually Not Available/Not Published