



Special Education Highlights

 **519 STUDENTS**


who live in the School District of University City receive special education services from SSD

2,431 K-12 STUDENTS 
enrolled in the School District of University City


15.7%
of students who attend University City receive special education services

 **400 STUDENTS** attend University City schools

 **17 STUDENTS** attend SSD schools


 **55 STUDENTS** receive Special Non-public Access Program services

SSD Services

SSD also provides a range of other services to students who live in the School District of University City, including:

 **Homebound Instruction**

Students who are unable to access services in a traditional school setting due to illness, injury, or disability

 **Special Non-public Access Program (SNAP)**

Students who attend private or parochial schools can receive after-school special education services through SSD

 **Courts Program**

Provides students the skills needed to make a successful transition out of a detention or treatment center

 **Early Childhood Special Education (ECSE)**

School District of University City provides its own ECSE services for children 3 to 5 years of age

Career Technical Education (CTE) Highlights



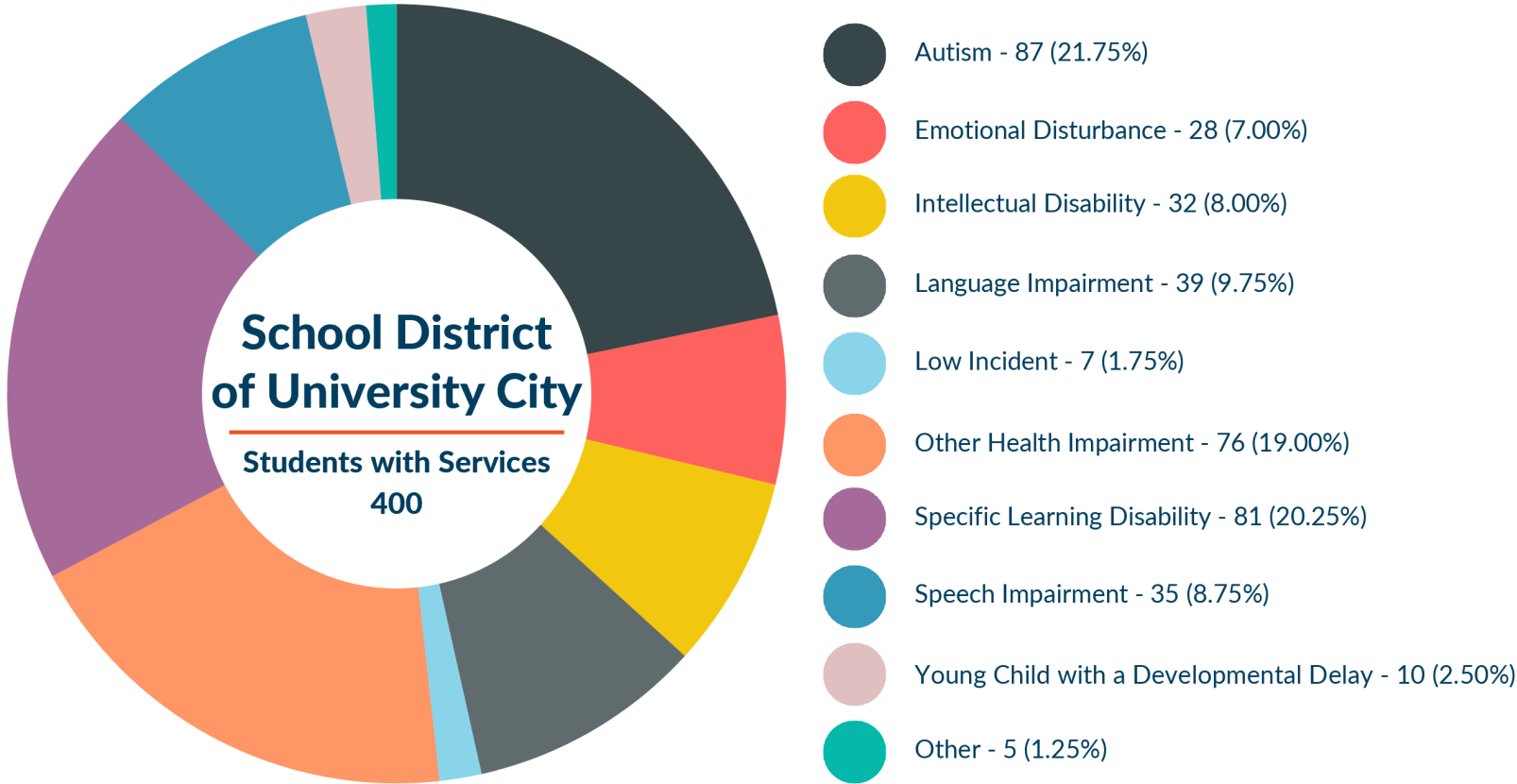
High school students earn the real-world skills today's employers demand as they prepare for college and careers through experiential learning in over 25 programs.

29 STUDENTS ATTEND NORTH TECH

1 STUDENT ATTENDS SOUTH TECH

13 DIFFERENT PROGRAMS ATTENDED

Students Served by SSD Who Attend University City



Definitions

Autism - A neurological and developmental disorder that affects how people interact with others, communicate, learn, and behave

Emotional Disturbance - An inability to learn that cannot be explained by intellectual, sensory, or health factors; an inability to build or maintain satisfactory interpersonal relationships with peers and teachers; inappropriate types of behavior or feelings under normal circumstances

Intellectual Disability - Significantly subaverage general intellectual functioning existing concurrently with deficits in adaptive behavior manifested during the developmental period that adversely affects a student's educational performance

Language Impairment - A communication disorder, such as stuttering, impaired articulation, a language impairment, or a voice impairment that adversely affects a child's educational performance

Low Incident - A disability that affects relatively few of the total number of students with disabilities who receive special education services

Other Health Impairment - Having limited strength, vitality, or alertness due to chronic or acute health problems (such as heart condition, tuberculosis, rheumatic fever, asthma, attention deficit disorder, epilepsy, diabetes, and others) that adversely affect a child's educational performance

Specific Learning Disability - The term used in federal legislation to refer to difficulty in certain areas of learning, rather than in all areas of learning

Speech Impairment - A communication disorder, such as stuttering, impaired articulation, language impairment, or a voice impairment, that adversely affects a child's educational performance

Young Child with a Development Delay - A child, ages 3 to 5, who is experiencing developmental delays, as measured by appropriate evaluation instruments and procedures, in one or more of the following areas: physical development, cognitive development, communication development, social or emotional development, or adaptive development; and who needs special education and related services

Other - Students in the process of receiving services, being screened for services, or with an inactive IEP