

# Financial Aid Night

# Welcome

## Scholarships Presentation

*Kristina Ford, Interim Director of Counseling and Student Services*

## General Financial Aid & FAFSA Presentation

*Margarita Lerma, Financial Aid Advisor*

*San Jacinto Community College, South Campus*

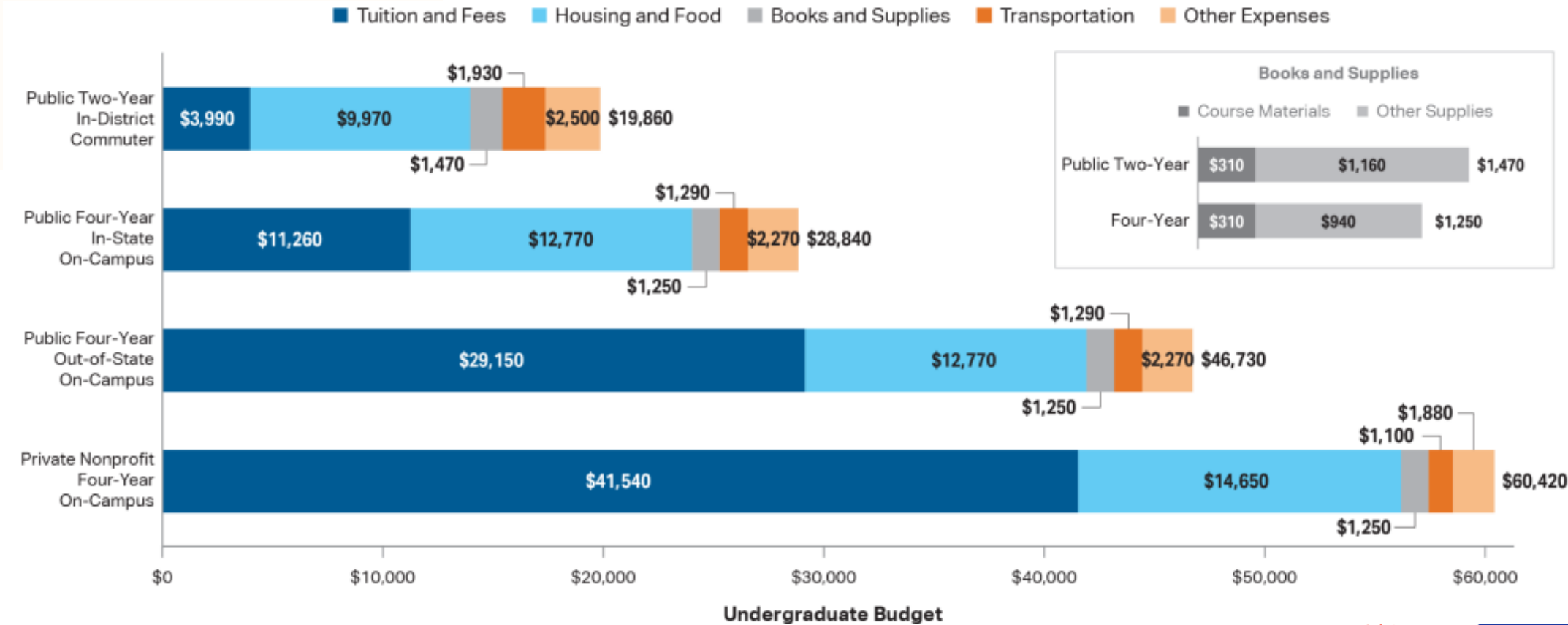


# Average Published Charges for Full-Time Undergraduates

	Sector					Carnegie Classification					
	Public Two-Year In-District	Public Four-Year In-State	Public Four-Year Out-of-State	Private Nonprofit Four-Year	For-Profit	Public Four-Year			Private Nonprofit Four-Year		
						Doctoral	Master's	Bachelor's	Doctoral	Master's	Bachelor's
<b>Tuition and Fees</b>											
2023-24	\$3,990	\$11,260	\$29,150	\$41,540	—	\$11,930	\$9,250	\$8,910	\$49,660	\$30,970	\$41,890
2022-23	\$3,890	\$10,990	\$28,300	\$39,940	\$15,740	\$11,630	\$9,070	\$8,770	\$47,620	\$29,930	\$40,340
\$ Change	\$100	\$270	\$850	\$1,600	—	\$300	\$180	\$140	\$2,040	\$1,040	\$1,550
% Change	2.6%	2.5%	3.0%	4.0%	—	2.6%	2.0%	1.6%	4.3%	3.5%	3.8%
<b>Housing and Food (Room and Board)</b>											
2023-24	\$9,970	\$12,770	\$12,770	\$14,650	—	\$13,400	\$11,680	\$11,850	\$16,780	\$13,710	\$13,580
2022-23	\$9,610	\$12,310	\$12,310	\$14,030	—	\$12,880	\$11,310	\$11,390	\$16,000	\$13,180	\$13,020
<b>Tuition and Fees and Housing and Food</b>											
2023-24	\$13,960	\$24,030	\$41,920	\$56,190	—	\$25,330	\$20,930	\$20,760	\$66,440	\$44,680	\$55,470
2022-23	\$13,500	\$23,300	\$40,610	\$53,970	—	\$24,510	\$20,380	\$20,160	\$63,620	\$43,110	\$53,360
<b>Percentage of Undergraduates Enrolled Full Time</b>											
Fall 2021	33%	80%		81%	69%	83%	73%	54%	87%	72%	86%

# Average Estimated Costs of College

Average Estimated Full-Time Undergraduate Budget (Enrollment-Weighted) by Sector, 2023-24



# What are Scholarships?

- Money is awarded to students to help pay for educational expenses.
- Scholarships may be offered by **schools, employers, individuals, private companies, communities, religious groups, and professional or social organizations.**
- Each scholarship might be available for 1 year only or renewable each year.
- Do not need to be repaid!

**ACHIEVE, CONTRIBUTE & LEAD WITH INTEGRITY**



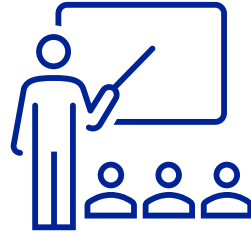
# Types of Scholarships



**1. Merit Based**



**2. Needs Based**



**3. Student Specific**



**4. Career Specific**



# Merit Based Scholarships



- Earned by meeting or exceeding certain standards set by the scholarship (GPA, SAT/ACT, etc.)
- Academic Achievement, Community Service, and Extracurricular Activities may be considered
- May be geared toward particular groups of people (for example, scholarships for military families)
- Special talents



# Merit Based Scholarship Examples




## Carr P. Collins Scholars Program

GEORGE AND MARY JOSEPHINE HAMMAN FOUNDATION

UT Dallas McDermott Scholars

## The Eugene McDermott Scholars Program

University of Houston  Clear Lake

## New Hawk Scholarship





# Needs Based Scholarships



- Based upon the student and family's financial record (may ask for income tax records)
- Usually requires applicants to complete the Federal Application for Federal Student Aid (FAFSA) or Texas Application for State Financial Aid (TASFA)

**Federal Student Aid**  
An OFFICE of the U.S. DEPARTMENT of EDUCATION




# Student Specific Scholarships

Applicants qualify initially by student-specific factors such as race, gender, religion, family and medical history, etc.

## THE NATIONAL SCHOLARSHIP DIRECTORY: BY FASTWEB



# Student Specific Scholarship Examples



**NATIONAL ITALIAN AMERICAN FOUNDATION**

[ABOUT](#) [JOIN](#) [EVENTS](#) [PROGRAMS](#)




TEXAS A&M UNIVERSITY  
Aggie One Stop

## Regents' Scholars Program



**JACL**  
Japanese American Citizens League

Don't mess with Texas



**BAYLOR** | Department of Religion  
College of Arts and Sciences

[Explore the Religion Department](#)

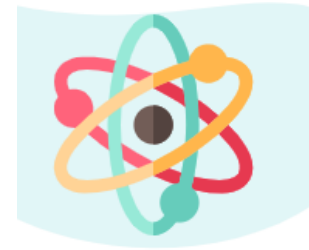
[About Us](#)  
[Faculty](#)

[Hubler Endowed Scholarship](#)



# Career Specific Scholarships

Awarded to students planning to pursue a specific field of study.



# Career Specific Scholarship Examples



Johnson&Johnson

Nursing



ECOLAB EXPERIENTIAL EDUCATION  
SCHOLARSHIPS



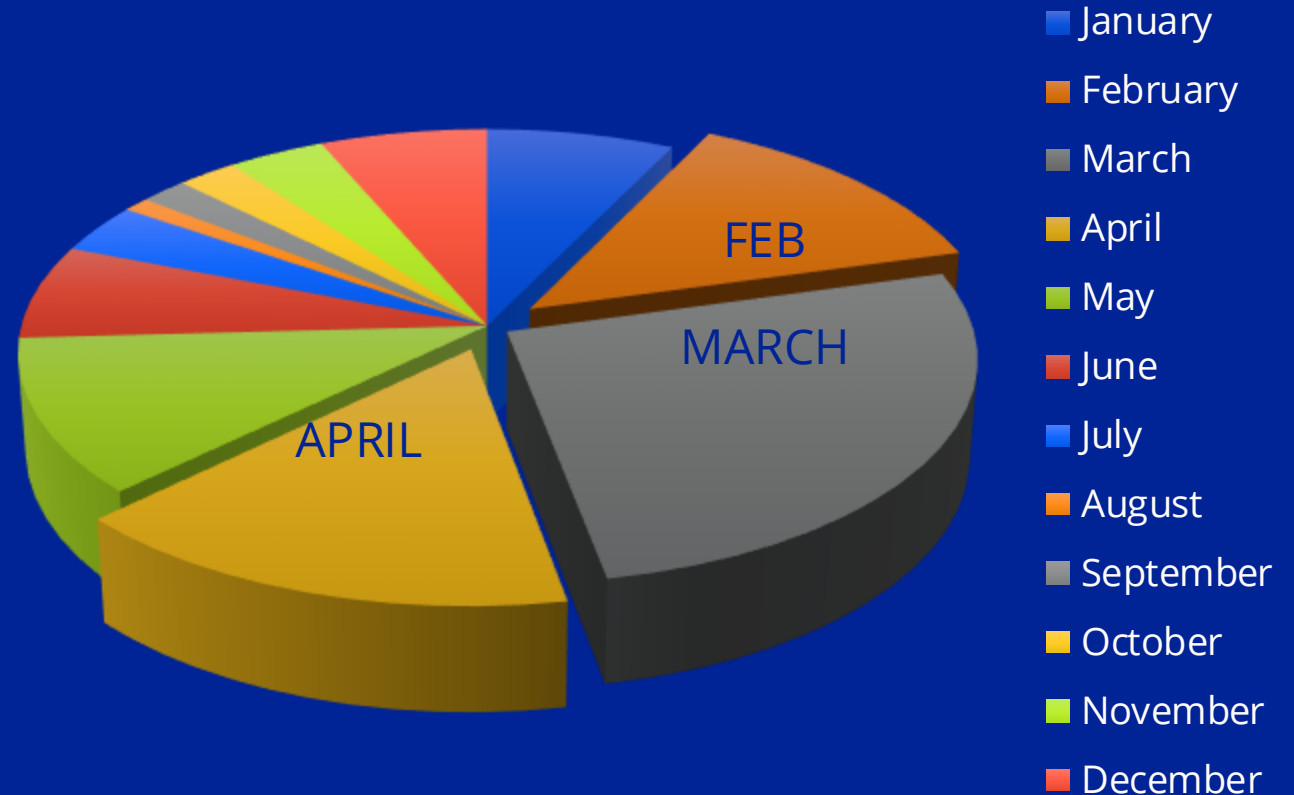
Accounting & Financial Women's Alliance  
CONNECT • ADVANCE • LEAD

ACHIEVE, CONTRIBUTE & LEAD WITH INTEGRITY

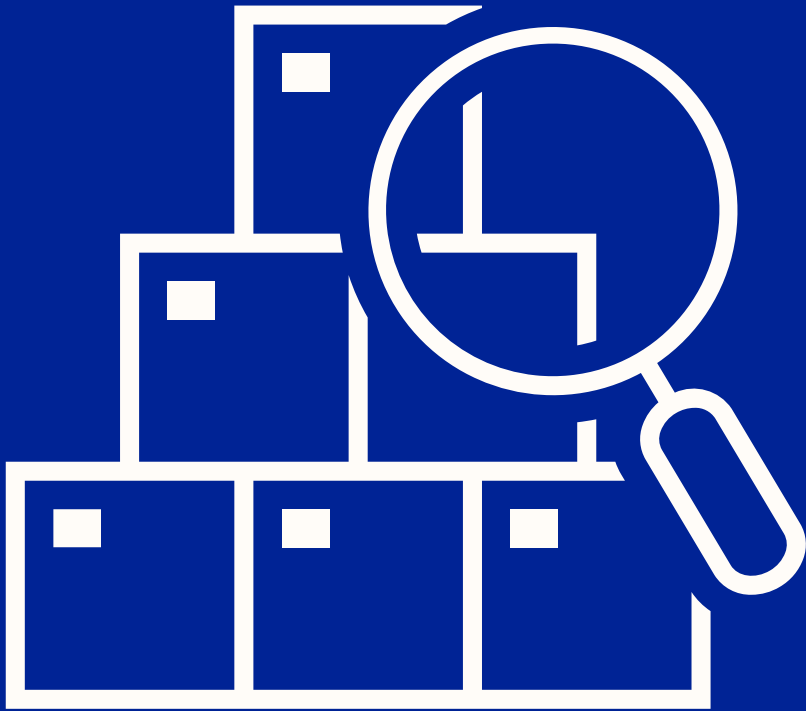


# When Is the Best Time to Apply?

- A large majority of scholarship deadlines are within the months of February-April.
- Some colleges have college-specific scholarships that have early deadlines around November and December.



# Where to Start?



- Search your community organizations
- Many employers offer scholarships for the children of employees
- College websites
- **Go online**

Source: [www.fastweb.com](http://www.fastweb.com)

# Online Scholarship Searches



<http://student.naviance.com/>

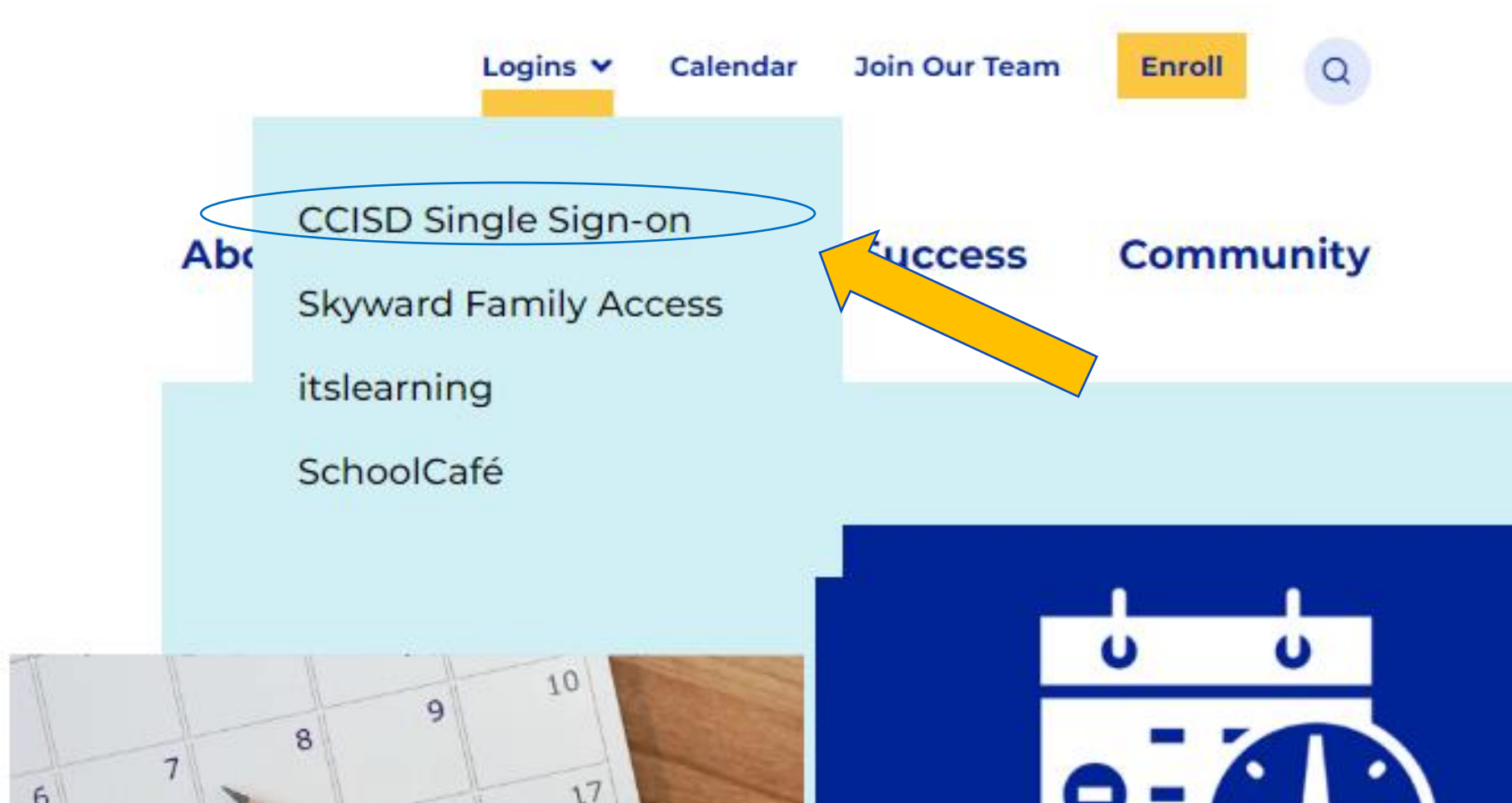
Naviance is CCISD's online tool that organizes college and scholarship searches.

- Clearbrookhs
- Clearcreekhs
- Clearfalls
- Clearhorizons
- Clearlakehs
- Clearsprings
- Clearviewtx





# Navigation Through CCISD's Website



# CCISD Single Sign-On Portal

The screenshot shows the Clear Creek Independent School District logo at the top, featuring a yellow star with a blue swoosh. Below the logo is the text "CLEAR CREEK INDEPENDENT SCHOOL DISTRICT". Underneath is a dark blue header with "Single Sign-On Portal" in white. The main content area has a white background with a "Username" input field, a "Password" input field, a "Forgot Password?" link, and a "Login" button.

Username = Student ID#

Password = Student Cafeteria Pin #

Scroll to the bottom of the landing page and find the Naviance Campus icon

The "Other Resources" section contains two icons. The first is a yellow square with a blue star and the text "CCEF GRANTS". The second is a blue square with a green star and the text "NAVIANCE". Below the icons are the labels "CCEF Grants" and "NavianceCFHS".



# Click on Colleges Link



Demo's Future Planning

[Military Service](#)

[College: Bachelor's Degree](#)

[Edit Path](#)

## Plan Your Future

Quickly access your path highlights, favorite careers, information from your school, and more from this page.



# Select Scholarships & Money



Home Self-Discovery Courses Careers **Colleges** Planner

## Demo's Future Planning

## Plan Your Future

Quickly access your path highlights, favorite information from your school, and more from

College Home

### Find Your fit

SuperMatch College Search

College Match

College Events

Scattergrams

Advanced College Search

College Lookup

### Research Colleges

Colleges I'm Thinking About

College Visits

College Compare

College Resources

Acceptance History

Enrichment Programs

College Maps

### Apply to College

Colleges I'm Applying To

Manage Transcripts

Letters of Recommendation

Test Scores

### Scholarships & Money

College-Specific Scholarships

National Scholarship Search

Scholarship Search

Favorite Scholarships

Demo

GPA/RANK is located in the About Me link,



# College-Specific Scholarship Search

## Scholarships & Money

[College-Specific Scholarships](#) [National Scholarship Search](#) [Scholarship Search](#) [Favorite Scholarships](#)

You may be eligible for these college-specific merit scholarships based on the academic data below. Please note that entering incorrect academic data will result in inaccurate scholarship estimates. Some amounts also reflect residency in **Texas**.

GPA (4.0 scale) [i](#)

4.0

Composite SAT [i](#)

1300

Composite ACT [i](#)

25

Class Rank [i](#)

25%

Show

Total Annual Cost

[i](#) About Scholarships and Financial Aid



**Saint Louis University**

Saint Louis, Missouri  
Private, 4-year

**\$25,000 - \$30,000 per ...**

Potential merit-based scholarship

**\$56,080**

Total annual cost

**45% - 53%**

Of total annual cost



**University of North Da...**

Grand Forks, North Dakota  
Public, 4-year

**\$14,000 per year**

Potential merit-based scholarship

**\$29,503**

Out-of-state total annual cost

**47%**

Of total annual cost



**Marquette University**

Milwaukee, Wisconsin  
Private, 4-year

**\$18,000 - \$30,000 per ...**

Potential merit-based scholarship

**\$54,672**

Total annual cost

**33% - 55%**

Of total annual cost



**Tiffin University**

Tiffin, Ohio  
Private, 4-year

**\$17,000 per year**

Potential merit-based scholarship

**\$37,800**

Total annual cost

**45%**

Of total annual cost



**Milwaukee School of ...**

Milwaukee, Wisconsin  
Private, 4-year

**\$12,000 - \$24,000 per ...**

Potential merit-based scholarship

**\$51,166**

Total annual cost

**23% - 47%**

Of total annual cost


**ACHIEVE, CONTRIBUTE & LEAD WITH INTEGRITY**



# National Scholarship Search

## Scholarship Search

Get matched with your best fit scholarships. To search our database of over **3.5 million** scholarships worth more than **\$18 billion**, just complete this profile form.

POWERED BY 

### About You

<b>Student Status</b> Select the category that best describes you.	<b>Parents Only</b> Select your child's grade level.
High School senior	Not applicable
<b>Gender</b>	<b>State of Residence</b>
Female	Not a U.S. Resident
<b>Citizenship</b>	<b>Age</b>
U.S. Citizen	17
<b>Disabilities</b>	<b>Ethnic Heritage</b>
Select Value	Select Value
Select Value	Select Value
<b>Religious Affiliation</b>	
Select Value	

The database lists entries by **name, deadline, award amount, merit vs need-based** and application requirements.



# National Scholarship Search

### Your Major, Interests and Activities

<b>Current or Future Career Goals</b> Select the industry you plan to enter.	<b>Current or Planned Area of Study</b> Select your current or future major(s).
Select Value	Select Value
Select Value	Select Value
<b>Interests &amp; Hobbies</b> Select activities you participate in formally or informally.	<b>Athletics &amp; Sports</b> Select any sports that you play.
Select Value	Select Value
Select Value	Select Value
Select Value	Select Value

### Your Academics

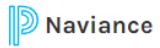
<b>SAT Range</b>	<b>ACT Range</b>
Ignore SAT scores	Ignore ACT scores
<b>GPA Range</b>	<b>Military Affiliation</b>
Ignore GPA	Select Value

Find Matching Scholarships

The database lists entries by **name, deadline, award amount, merit vs need-based** and application requirements.



# Scholarship Search



## Scholarships & Money

Scholarships are a form of aid that does not have to be repaid. The list below contains scholarships or financial aid awards that may be relevant for you, based on information pulled from available scholarships.

Search all scholarships

Search

> [Gee Family Association Education Fund](#)

Deadline  
01/26/2024

Maximum Award  
\$1000

> [Houston Livestock Show and Rodeo](#)

Deadline  
01/31/2024

Maximum Award  
\$20000

> [FOSSI Scholarship](#)

Deadline  
01/31/2024

Maximum Award  
\$40000

> [Houston Relocation Professionals Scholarship](#)

Deadline  
02/15/2024

Maximum Award  
\$2500

Shows Scholarships with requirements that may be a suitable match for you according to the information in your Naviance Profile.





# Other Online Search Options

**Scholarships.com**

[scholarships.com](http://scholarships.com)

**Fin Aid**

[finaid.org/scholarships](http://finaid.org/scholarships)

**Fast Web**

[fastweb.com](http://fastweb.com)

**College for All Texans**

[collegeforalltexans.com](http://collegeforalltexans.com)

Source: [www.fastweb.com](http://www.fastweb.com)

# Avoid Scams and Beware of False Claims!

- “For a small fee, we’ll give you a list of scholarships.”
- “We’ll help you complete complicated forms.”
- “You are guaranteed a minimum of \$1000 in awards.”
- “We’ll need a bank account and pin or a credit card number to verify your account.”



# Tips for Applying

1. Get organized. (Academic information, SAT/ACT scores, letters of recommendation, personal essay, community/volunteer work)
2. Keep track of deadlines.
3. Separate the scholarships you are working on from those you have not started yet.
4. Proofread your materials and have a teacher, parent, or friend review your application and essay.
5. Avoid using your CCISD email address as you will not have access to this account once you graduate.

Source: [www.fastweb.com](http://www.fastweb.com)

# How does a Scholarship Affect My Other Student Aid?

Scholarships may affect other student aid you are offered. You'll need to let your school know of the scholarship money you receive.



# Applying for Scholarships is a Time Investment

BUT THE PAYOFF  
CAN BE GREAT!

ACHIEVE, CONTRIBUTE & LEAD WITH INTEGRITY



# FAFSA/TASFA Graduation Requirement

With the adoption of TEC §28.0256 all students must now complete and submit a Free Application for Federal Student Aid (FAFSA) OR a Texas Application for State Financial Aid (TASFA) starting with the Class of 2022.

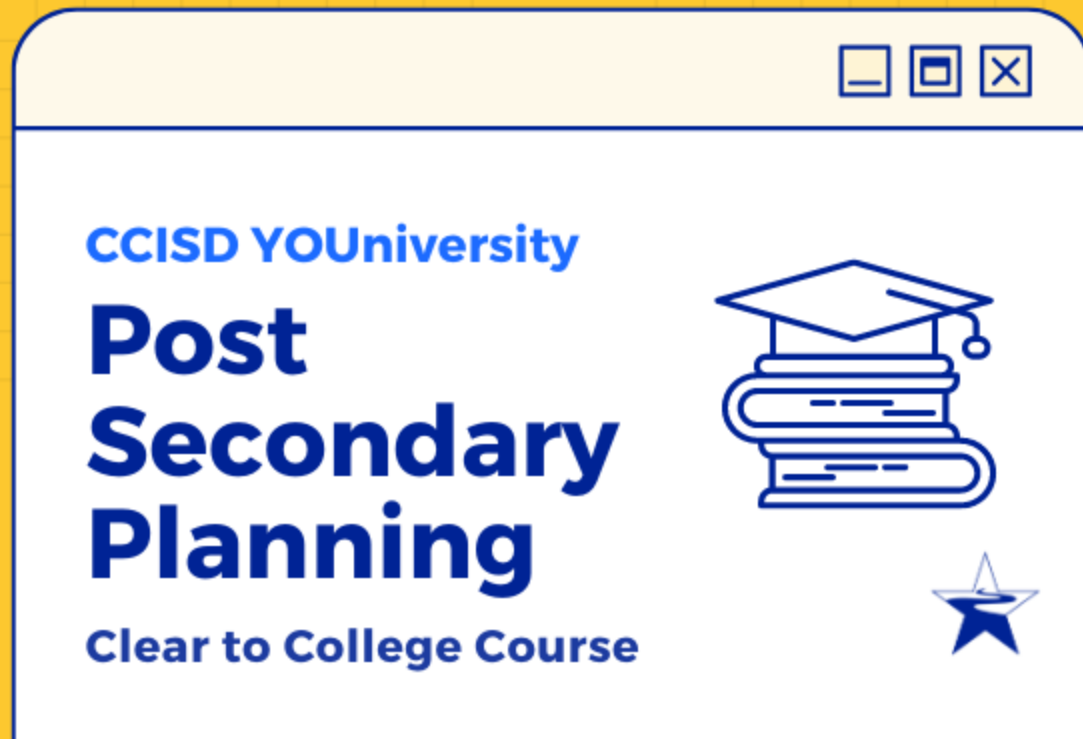
Families do have the option to complete a CCISD Financial Aid Opt-Out form if completing an application is not an option for families.





# CCISD Process for the FAFSA/TASFA Graduation Requirement

# CCISD YOUniversity Course



Scan to Enroll in Post Secondary Planning Course Today!





# Scholarship Questions?

ACHIEVE, CONTRIBUTE & LEAD WITH INTEGRITY

