



School Bell TIMES



September 2024

East Central ISD Board of Trustees Call for School Election

During the board meeting on August 15, the East Central Independent School District Board of Trustees unanimously approved calling an election for November 5, 2024.

“I want to thank our board, staff and community for their work to help get us to this point,” Superintendent Roland Toscano said. “The decision was reached through a thorough process.”

To register to vote or to find out your registration status, call the Bexar County Elections Department at 210-335-VOTE (8683) or visit their website. The last day to register to vote in the November election is Monday, October 7.



East Central ISD Students Head Back to School

East Central ISD students returned to school on Wednesday, August 7, marking the start of the 2024-2025 school year. The energy and excitement on our campuses reflect our shared commitment to academic excellence.

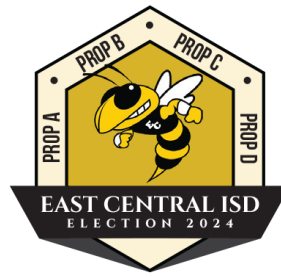
We extend our heartfelt thanks to the entire East Central community—parents, staff, and supporters—whose unwavering faith and commitment make it possible for us to provide a nurturing and high-quality education for all our students. Your partnership continues to be the backbone of our success as we work together to foster growth, learning, and opportunity for every child.

Together, we remain proudly united in our mission. We are EC!



VOTE EARLY
OCT 21 - NOV 1
ELECTION DAY
TUE, NOV 5

Visit ecisd.net/election2024 for more information.



BY THE COMMUNITY



For 75 years, East Central ISD has prepared students for life in an interconnected world with a dynamic economy. As one of the fastest-growing school districts in Texas, ECISD's rapid growth continues, as the district's enrollment will double over the next eight years.

And East Central ISD stands steadfast in our commitment to our mission:

“Together, we will continue to tailor learning experiences, ensuring every student is continuously challenged to enhance their knowledge and skills in every classroom, every school, every day.”



Re-convened in the Fall of 2024, the Bond Advisory Committee, with over 100 members, including parents, teachers, administrators, and community members, met to study and prioritize the district's facilities. Based on their recommendations, this election package was created.

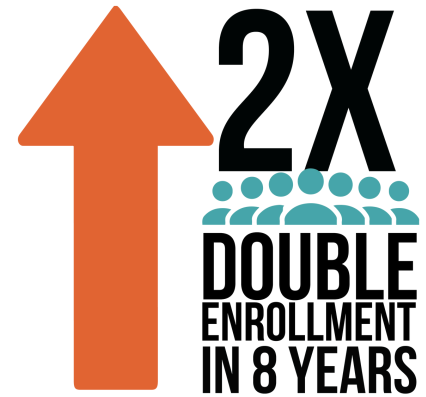
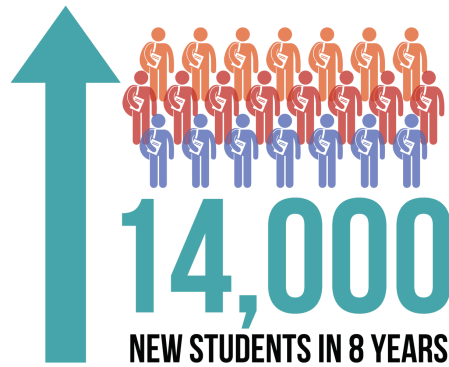
IN THEIR OWN WORDS
AMANDA KNUTSON



AMANDA KNUTSON
COMMITTEE MEMBER

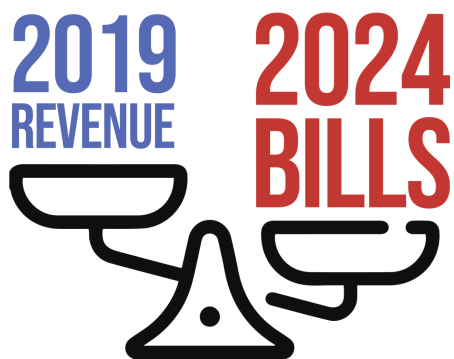


ECISD IS GROWING, FOUR PROPOSITIONS ON NOV 5 BALLOT



“Our community has the chance to vote on these issues now while it remains cost-effective for taxpayers, especially with rising escalation costs over time,” said Mr. Roland Toscano, ECISD Superintendent of Schools.

DID YOU KNOW?



As enrollment and operating costs like salaries, supplies, and fuel have continued to rise since 2019, funding for school operations has not kept pace. The State has barely increased school funding since 2019, and inflation has been 14.4% since then.

That’s why the district administration and board of trustees have called for a Tax Ratification Election and bond election this November.



GENERATES \$6.6M REVENUE PER YEAR



RECRUIT AND RETAIN HIGH-QUALITY STAFF

\$6/MONTH



SAFETY & SECURITY

\$0.75/MONTH



ARMED OFFICER AT EVERY CAMPUS

\$0.75/MONTH

\$7.50 MONTHLY IMPACT ON THE AVERAGE HOME

PROP A FUNDING PRIORITIES



RECRUIT AND RETAIN HIGH-QUALITY STAFF

ECISD competes with neighboring districts for teachers and staff.

Recently, many of these districts have increased teacher pay, and ECISD cannot keep up without new revenue.

OVER **40%** OF REVENUE COMES FROM **THE STATE**

This proposal could keep salaries competitive with districts in the Bexar County region.

Neighboring School Districts and Starting Teacher Salaries

School District	Starting Teacher Salary
Southside ISD	\$61,777
Harmony Public Schools - South Texas	\$61,476
Lackland ISD	\$60,000
Southwest ISD	\$60,000
Northside ISD	\$59,255
San Antonio ISD	\$58,400
East Central ISD	\$57,500
North East ISD	\$57,000
Judson ISD	\$56,000

Currently, starting teacher salaries are about **\$2,600 lower** than the local average for area school districts.

IN THEIR OWN WORDS SANDRA HERNANDEZ



There is a statewide teacher shortage that is being felt throughout Texas. "Every year we don't start off fully staffed," Academic Support Facilitator Sandra Hernandez says.



**STATEWIDE
TEACHER SHORTAGE**



SAFETY & SECURITY

Proposition A would include cameras, access controls, Silent Panic Alert Technology, 911 radio repeaters, cell phone boosters, perimeter fencing, bullet resistant film, mental health first aid training, campus radios, PA system upgrades, AEDs, Stop the Bleed kits, and Epinephrine Pens.



SAFETY & SECURITY



ARMED OFFICER AT EVERY CAMPUS

Texas House Bill 3 requires armed personnel on every campus, but cost and recruitment prevent ECISD from complying with the new law. Placing an armed officer at each school would cost approximately \$90,000 per campus per year.

The State provides \$10,000 per campus, but **most of the new law's requirements are unfunded.** The grant is just a small fraction of the money needed to comply with the mandate of hiring armed personnel at every school.



DID YOU KNOW?

LARGEST EMPLOYER IN THE AREA



ECISD is the largest employer in the area and Prop A would increase the salaries of over 1,700 staff members.

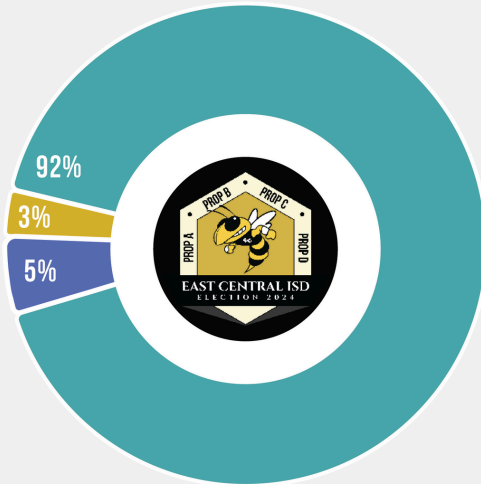


LEARN ABOUT PROPOSITIONS B,C,D ➔



BOND 2024

TOTAL PROPOSED \$360M



KEEP UP WITH GROWTH
\$20.97/MONTH



HORNET STADIUM RENOVATIONS
\$1.05/MONTH



ADDRESS AGING ATHLETIC FACILITIES
\$1.98/MONTH

\$24 MONTHLY IMPACT ON THE AVERAGE HOME

AGES 65 & OLDER

\$0 TAX IMPACT

OVER FROZEN DOLLAR AMOUNT



Keep up with Growth

- **High School #2**
East Central High School is projected to have over 4,200 students in the next two years and will be at 120% capacity in three years. This bond will allow for the construction of a second comprehensive high school for growth.
- **Two Elementary Schools**
Proposition B would allow the construction of two new elementary schools to expand and relieve enrollment pressure in the northern and southern portions of the district. Each elementary school will be a 98,000-square-foot facility with a capacity for 900 students and a 50-year usable lifespan.
- **New Physical Education Gym at ECHS**
Prop B would allow for converting the old practice gyms into a new, second PE gym and updating spaces for training rooms, locker rooms and weight rooms.
- **AgriScience Renovations and Additions**
Prop B would renovate the Ag Facility, including safety and accessibility upgrades, additional animal pens, technology, amenities, animal staging and restrooms.
- **Land Acquisition**
Land for future campus sites.



Hornet Stadium Renovations

Hornet Stadium was renovated in 1982, more than 42 years ago. In June, the press box at Hornet Stadium was condemned, and removed. Renovations include:

- Replace Scoreboard
- Replace Stands
- New Press Box
- Additional Restrooms
- Storage
- LED Lighting
- ADA Accessibility
- Increase safety measures



Address Aging Athletic Facilities

Many of ECISD's athletic facilities are becoming outdated due to use, weathering, and changing physical conditions at the sites.

- Baseball Field Renovations
- Softball Field Relocation & Updates
- Tennis Facility Renovations
- Replace Courts



ECHS PROJECTED TO BE AT OVER CAPACITY

East Central High School has grown by 300 and 355 students in the last two years and is near capacity. It will add another 420 students over the next two years, reaching 120% capacity in three years with over 5,000 students. The 2024 bond will allow for constructing a second, comprehensive high school.

120% CAPACITY IN THREE YEARS

IN THEIR OWN WORDS DR. WARREN MIZE



“The growth in our community has been so vast in size overnight that we are so cramped in our facilities...We don’t have the staff to manage the size. There’s just not a

place to put all these people, and we are on top of each other with everything we do. Department to department, class to class,” Dr. Warren Mize, Director of Patterson Performing Arts, explains.

The second high school will eventually be the same size as ECHS, which will delay the need for a third high school in the distant future. Because there’s a limited number of spots in athletics, fine arts, and academic programs, a second comprehensive high school will give students more opportunities to participate in enrichment activities and career and technology education (CTE) programs.

PROPOSED



The new 396,000 sq. foot facility will have a total student capacity of 2,200 and a useful lifespan of 50 years. The construction includes traditional classrooms, SPED classrooms, science labs, Computer Labs, CTE and Fine Arts Classrooms.



OVERCROWDING AT ELEMENTARY SCHOOLS

Many of the district's elementary schools are nearing, at, or already overcapacity.

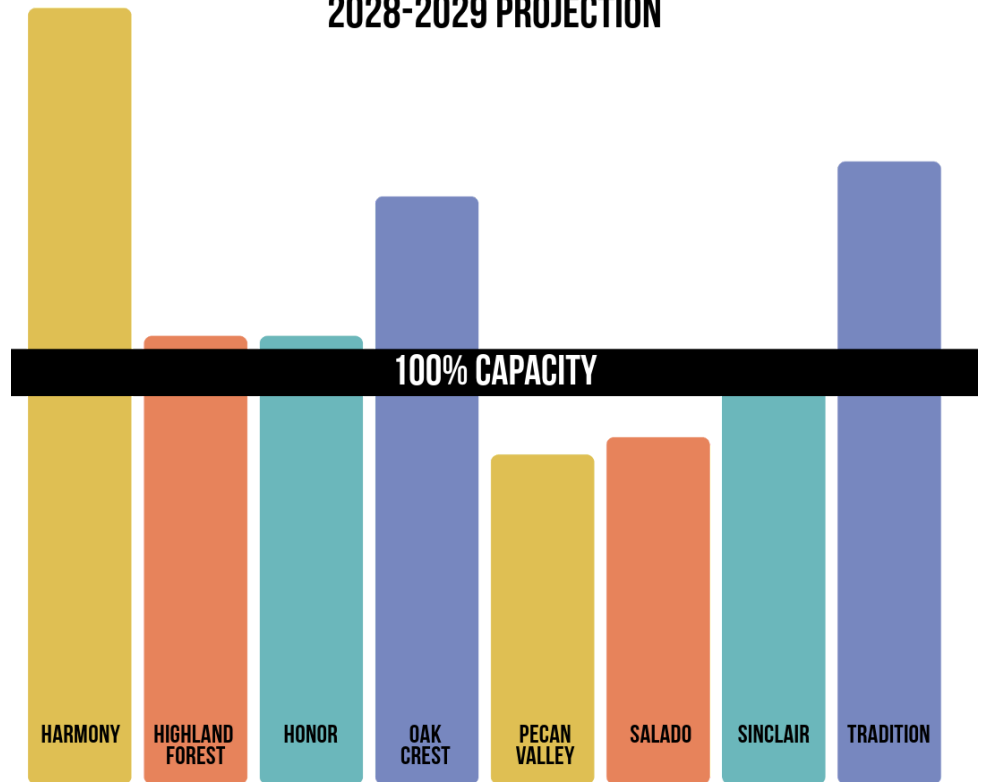
IN THEIR OWN WORDS KANDICE CAUDILLO



KANDICE CAUDILLO
4TH GRADE TEACHER - HARMONY ES

“My class sizes were anywhere between 24 and less. And now that's not the case. We're getting more towards the 30, 28 range,” 4th grade Harmony Elementary Teacher Kandice Caudillo says.

ELEMENTARY ENROLLMENT 2028-2029 PROJECTION



Proposition B would allow the construction of two new elementary schools to expand and relieve enrollment pressure in the northern and southern portions of the district.



PROPOSED

Each elementary school will be a 98,000-sq. foot facility that can house up to 900 students and will have a 50-year lifespan.



Portables cost around \$300,000, have relatively short life spans, and are temporary solutions to growth. Portables pose safety and security concerns for students and staff. This bond will help reduce the reliance on portables and instead make investments in long-term solutions.

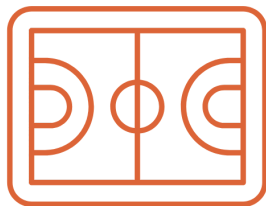


GYM CONVERSION AT ECHS

East Central HS has only one PE gym, and the practice gyms are beyond their useful life. Prop B would allow for converting the old practice gym into a new, second PE gym which will also serve as a competition gym after school and updating spaces for training, locker, and weight rooms.

LIMITED SEATING

The current PE gym at ECHS was not designed to be a gym at the 6A level. For after school programs, it currently seats only about 70 people, and students sit close to the court, which creates incidents between players, officials, and fans.



ONE GYM

PRESENTS SCHEDULING CHALLENGES

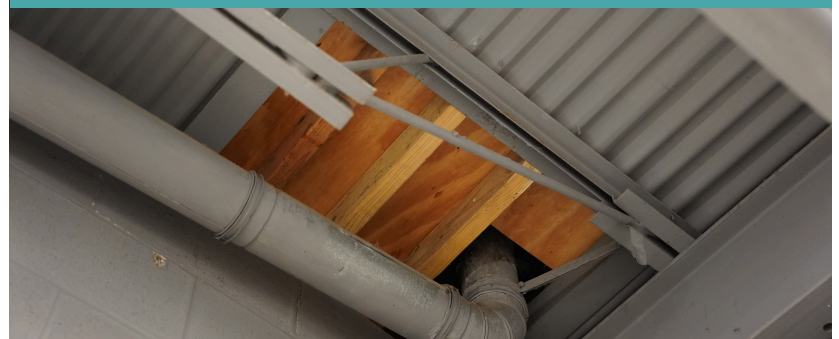
Currently, our high school teams and PE classes share the gym during class periods, which limits the ability to distribute court time equally. When all gyms are used at ECHS, the district buses students to the middle schools for gym use, cutting into practice times.

The new facility would increase the seating capacity and move the spectators back to a safer distance from the court. A new gym will provide a centralized location for locker rooms in the same facility. Currently, there are multiple locker rooms throughout the campus.

CURRENT CONDITIONS



LIMITED SEATING



SECOND STORY FLOOR DAMAGE



FLOORING IS WARPED



AGRISCIENCE FACILITY CLOSE TO TURNING STUDENTS AWAY

CURRENT CONDITIONS



ANIMAL PENS



ROOF DAMAGED



OUTDATED BATHROOMS



LIMITED SPECTATOR SEATING

Prop B includes renovations and additions to the Agriscience facility. The ag show barn and animal pens were built in 1995. The current facility lacks ADA accessibility and modern technology infrastructure.

If the facility is not expanded, growth in the district and the agriscience program will limit the number of spots available to interested students.

The construction will include renovations to the barn, animal pens, feed storage, restrooms, concessions, and technology infrastructure. Renovations will also improve accessibility, animal staging areas, and restrooms for shows and competitions.

IN THEIR OWN WORDS LORIE KEMPEN



“We have even more animals that are coming to our barn. We have issues with pens, but we also have

restrictions that have to be met for safety and accessibility. There's just not enough space to put them all,” Ag Teacher Lorie Kempen says.

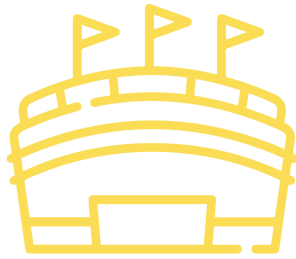


HORNET STADIUM RENOVATIONS

Hornet Stadium was renovated in 1982, more than 42 years ago. The facility is neither safe, ADA-compliant, and accessible to all users.

The press box at Hornet Stadium was condemned and removed in June. The bleachers haven't been updated or renovated since 1982, and a recent facilities report deemed them unsafe.

HORNET STADIUM 42 YEARS OLD



Prop C would provide funds for renovations to Hornet Stadium, including a replacement scoreboard, new stands, a new press box, upgraded restrooms, storage, fan amenities, and LED lighting.

CURRENT CONDITIONS



PRESS BOX WAS CONDEMNED AND REMOVED



BLEACHERS HAVE NOT BEEN UPDATED SINCE 1982, SHOWING ADA ACCESSIBILITY ISSUES



BLEACHERS

IN THEIR OWN WORDS DAMON TRAINER



Hornet Stadium is “used everyday by kids academically plus athletically. You're starting to see the the wear and tear within the stadium. We're reaching that position where there's going to be unusable portions within the near future,” former ECHS graduate Damon Trainer says.



BASEBALL AND SOFTBALL RENOVATIONS

CURRENT CONDITIONS



NATURAL GRASS AND HAS DRAINAGE AND MAINTENANCE ISSUES



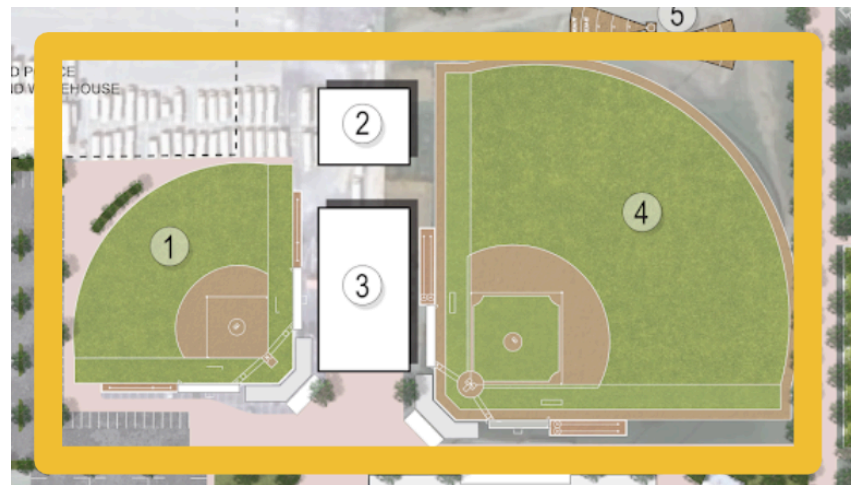
BATTING CAGES CAN NOT BE USED IN INCLEMENT WEATHER



SOFTBALL WALKWAY NOT ADA ACCESSIBLE

Prop D includes renovations to the baseball and softball facilities.

The baseball field renovations will install turf to resolve the drainage areas of the natural grass. Natural grass requires additional drainage and maintenance. Additional upgrades include new lighting, fan restrooms, increased seating, and upgraded ADA accessibility. Prop D would also include softball field relocation and upgrades, including accessible parking.



PROPOSED

“We have wheelchair spectators who come, and it’s very difficult for them to navigate. Our parking area is more than half a mile away, and we don’t have a storage facility for player equipment, bags, and other items to keep here at the field,” explains Softball Coach Maggi Welham.

**IN THEIR OWN WORDS
MAGGI WELHAM**





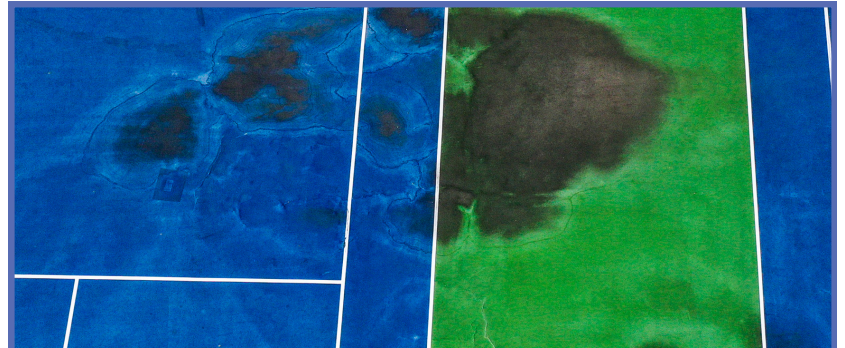
TENNIS COURTS SHOW SIGNS OF DETERIORATION

Currently, the East Central ISD tennis courts are cracked and deteriorating, creating an unsafe playing surface and can no longer be patched or repaired.

Deteriorating tennis court conditions have forced the district to host tournaments elsewhere. When the district holds tournaments, they often run long because half of the courts are unlit and unusable after dark.

Prop D would build new tennis courts with LED lighting for all courts. The tennis building would also be renovated, including its storage, locker rooms, and restrooms.

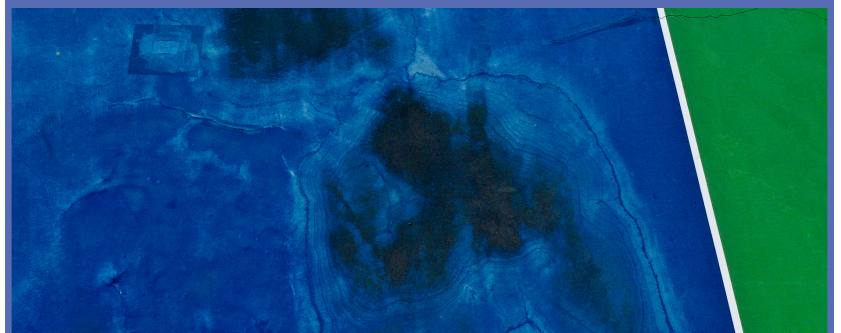
CURRENT CONDITIONS



DETERIORATING COURTS



CRACKS IN COURTS



CRACKS IN COURTS



TENNIS BUILDING RENOVATION

IN THEIR OWN WORDS TONY RAMOS



“Throughout the years, we’ve seen it start to deteriorate. There are significant cracks throughout the facility....

And when it starts to get late, we don't have the full usage of our facility because we're down to only using these top four courts because they're the only ones that have lights down there at the bottom,” Tennis coach Tony Ramos explains.



ELECTION 2024 FINANCIAL FACTS

DELAYING THE BOND WILL INCREASE CONSTRUCTION COSTS



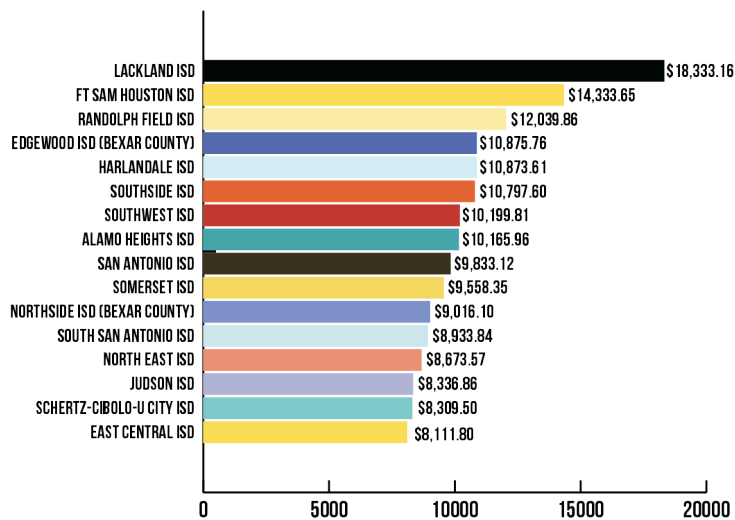
Delaying implementation of the bond program exposes the District to escalating construction costs, which are expected to increase the proposed bond projects' total cost by an estimated 10% or \$35M in the next year and an additional 8% each subsequent year.

LOWEST TAX RATE IN BEXAR COUNTY

DID YOU KNOW?

Out of 12 districts in Bexar County, ECISD has the lowest tax rate, and even if voters approve the five-cent increase, the rate will still be among the lowest.

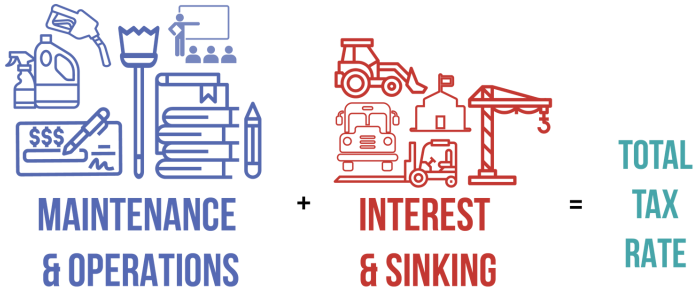
PER PUPIL EXPENDITURE 2022



LOWEST AREA PER PUPIL SPENDING
 DUE TO LOWEST TAX RATE



SCHOOL DISTRICTS HAVE TWO BUDGETS



School districts in Texas have two budgets. Maintenance and Operations (M&O) funds pay for day-to-day operations. Interest and Sinking (I&S) funds pay for capital improvements. Funding for each budget is primarily provided by local tax dollars from property values, calculated by pennies collected per \$100 of property value.

AGES 65 & OLDER \$0 TAX IMPACT OVER FROZEN DOLLAR AMOUNT

Current homeowners ages 65 and over will not be impacted by the passage of this election. Their school taxes will not exceed the frozen dollar amount

that was established when the Over-65 exemption was granted (unless improvements or additions are made to the residence). To have your school taxes frozen, you must file a homestead application with the appropriate appraisal district and be granted the Over-65 exemption.



DISABLED VETERANS

In accordance with the Tax Code, a Disabled Veteran who has a 100% service-connected rating from the United States Department of Veteran Affairs or is unemployable is exempt from taxation on the veteran's residential homestead. Submit an application with the Bexar Appraisal District.



BALLOT LANGUAGE



Ballot language can be complex. When East Central ISD voters get their ballots, they will not see what Prop A revenue would be used for and how much the State will contribute. The official ballot language says the proposal will generate an additional \$3.8 million, which is just from local taxpayers. The proposal will also require the State to kick in over \$2.8 million for ECISD, for \$6.6 million in additional revenue.



In 2019, Texas Legislators passed a new law as part of HB 3 that requires all bond propositions for any school district to have the phrase "This is a property tax increase" on all ballot language for bond propositions. Due to this requirement, all voters will see this statement on the official ballot language, even if the tax dollar amount is frozen and will not exceed the tax ceiling.



East Central Independent School District
 6634 New Sulphur Springs Rd
 San Antonio, TX 78263-7861
 (210) 634-6100

NON-PROFIT
 U.S. POSTAGE
 PAID
 San Antonio, TX

VOTE EARLY
OCT 21 - NOV 1

ELECTION DAY
TUE, NOV 5



There will be 4 props and then school districts are listed alphabetically - ECISD will be the only school district on page 3.

VOTE AT ANY VOTING LOCATION IN BEXAR COUNTY

FOUR CONVENIENT LOCATIONS IN ECISD

EAST CENTRAL ISD (BOARDROOM)	6634 NEW SULFUR SPRINGS RD.
SCHAEFER BRANCH LIBRARY	6322 US HWY 87 E.
OLD CONVERSE CITY HALL	407 S. SEGUIN RD.
FIND LOCATIONS NEAREST YOU, GO TO	WWW.ECISD.NET/ELECTION2024



ecisd.net/election2024

SUNDAY	MONDAY	TUESDAY	WEDNESDAY	THURSDAY	FRIDAY	SATURDAY
OCTOBER 20	OCTOBER 21	OCTOBER 22	OCTOBER 23	OCTOBER 24	OCTOBER 25	OCTOBER 26
	8AM - 6PM	8AM - 6PM	8AM - 6PM	8AM - 6PM	8AM - 6PM	8AM - 8PM
OCTOBER 27	OCTOBER 28	OCTOBER 29	OCTOBER 30	OCTOBER 31	NOVEMBER 01	NOVEMBER 02
NOON - 6PM	7AM - 7PM	7AM - 7PM	7AM - 7PM	7AM - 7PM	7AM - 7PM	