

# FRIDAY FLASH

Pine-Richland High School

August 30, 2024

## In This Issue

- [Back-to-School Assembly](#)
- [Health Services Reminders](#)
- [Breakfast and Lunch Menus](#)
- [AP Test Reimbursement](#)
- [North Pittsburgh College Fair](#)

## Quick Links

- [Pine-Richland High School](#)
- [Calendar of Events](#)
- [Daily Announcements](#)
- [Cafeteria Account and Menus](#)
- [PRHS PTO](#)

## Back-to-School Assembly

High school students attended a back-to-school assembly and student handbook review on Monday. All students were sent a copy of this presentation and asked to review. Parents, please encourage your students to review and see their principal with questions.

[Read More](#)



## Health Services Reminders

Please review our district website for annual back-to-school reminders regarding health services, immunizations and screenings.

[Read More](#)



## Breakfast and Lunch Menus

Pine-Richland is now using Nutrislice for breakfast and lunch menus. [Take a look at your school's new menus](#), and be sure to review [the user guide](#) for helpful tips for printing and filtering options. Questions about the new menus should be directed to [szang@pinerichland.org](mailto:szang@pinerichland.org).



## AP Test Reimbursement

Please submit [this form](#) to the Central Administration office by **September 30** for 2023 - 2024 reimbursements.

## AP TEST REIMBURSEMENT

### North Pittsburgh College Fair

Join La Roche University for the North Pittsburgh College Fair on Monday, October 7, from 6:00 pm - 8:00 pm at the Kerr Fitness & Sports Center. Meet with representatives from 140 colleges and universities to learn about different campuses and identify schools that offer your chosen major.



[Read More](#)

## In Case You Missed It

### PRTV Apparel

Order PRTV apparel now and support the PRTV Club at the same time. Orders can be shipped directly to your home or can be picked up at the high school. Orders can be made through **September 9**. A portion of the sales will be given to the PRTV Club.



[Read More](#)

### PRHS PTO Meeting

Don't miss our first PTO meeting this year for a Principal update. Join us on **Thursday, September 19**, at 9:30 am in the library classroom (or by Zoom).



### Senior Yearbook Photos

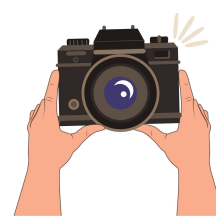
Senior portraits must be submitted by **Monday, September 30**. Please refer to the attached file for dress and portrait guidelines.



[Read More](#)

## Last Call for Kindergarten Pictures

Send in your senior's early years/kindergarten picture for a bulletin board to be displayed in the high school. Submit photos by emailing [Ramseniorphotos@gmail.com](mailto:Ramseniorphotos@gmail.com)



## Student Directory Information

Submit contact information for this year's Student Directory by [clicking here](#).

Do you have a business or know a business that would benefit from advertising in our PRHS Directory? Ad submissions are due by **September 8**.



[Read More](#)

## Save the Date

Open House is scheduled to take place on **Thursday, October 10**, from 6:00 pm - 8:00 pm.



## PRHS UnFundraiser

Support the PRHS Staff and celebrate the students without selling anything or dining out. With a \$30 minimum donation, you will receive a free directory!



[Read More](#)

## Reminders and Resources

- Friday Flash submissions are due Wednesdays at 8 am to [pnewsletters@pinerichland.org](mailto:pnewsletters@pinerichland.org).
- [Free and Reduced Meal Applications](#) must be submitted each school year.
- [AP exam reimbursement](#) is due September 30 annually.
- 2024-2025 [Children's Health Insurance Program](#) information.
- Check the [Friday Flash archives](#) for past information.



[Unsubscribe](#) | [Update Profile](#) | [Constant Contact Data Notice](#)



Try email marketing for free today!