

Lead Forward

Maize USD 266 Strategic Plan | 2023-2028

Nurture a Cohesive Culture
Attract Expert Educators

Elevate Student Learning
Build for the Future





CONNECT. LEARN. LEAD.

VISION

The Maize School District is a student-centered environment where all members of the school-community are empowered to participate and thrive academically, civically, and socially through relevant educational experiences to achieve and fulfill their life's purpose.

MISSION

The mission of Maize USD 266 is to inspire students to discover their potential through connecting, learning, and leading.

ABOUT OUR PLAN

A strategic plan focuses time, talent, and resources in alignment with identified priorities that correspond to district needs.

During the 2022-23 school year, leaders engaged stakeholders, including students, employees, parents, and community members, and listened to their needs and dreams. Feedback was collected at community events, school site visits, and during a Superintendent Employee Listening Tour with sessions at every school and department building. To further clarify needs, the district also reengaged advisory groups, including the Superintendent Student Advisory Team, Superintendent Teacher Advisory Team, District Site Council, District Leadership Team, Building Leadership Teams, Building Site Councils, and a Special Education Advisory Team. During these meetings, strengths and needs were discussed in detail. Then, all data points were analyzed and prioritized to pinpoint opportunities for growth in Maize USD 266.

Those opportunities have been summarized into four main focus areas, which are **Nurture a Cohesive Community**, **Attract Expert Educators**, **Elevate Student Learning**, and **Build for the Future**.

FOCUS AREAS

Maize USD 266 is already an amazing place, but it can continue to get even better with focused, collaborative work. The main areas below contain three lead measures that become the district's next steps for improvement. During the next five years, stakeholders will see and hear details about these steps and the progress made.

★ Nurture a Cohesive Culture



Cultivate & Sustain Relationships



Embrace Family Partnerships



Align District Processes

★ Attract Expert Educators



Bolster Total Compensation



Energize Workplace Culture



Create Impactful Professional Learning

★ Elevate Student Learning



Boost Student Attendance



Enhance Individualized Support



Strengthen Resilience

★ Build for the Future



Inspire Innovative Spaces



Ensure Safety & Security

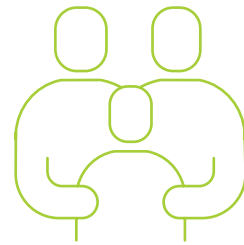


Accommodate Expected Enrollment Growth

Nurture a Cohesive Culture

Data Driven:

- KSDE Report Card
- Climate and Culture Survey
- Walkthrough Data
- Stakeholder Perceptions



Cultivate & Sustain Relationships



Embrace Family Partnerships



Align District Processes

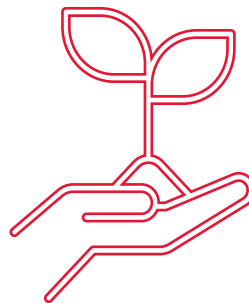
Attract Expert Educators

Data Driven:

- Salary and Wage Comparison
- Professional Learning Feedback
- Climate and Culture Survey
- Retention Rates



Bolster Total Compensation



Energize Workplace Culture



**Create Impactful
Professional Learning**

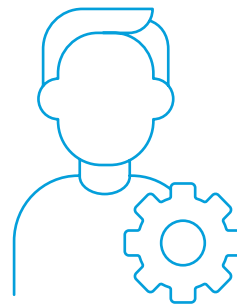
Elevate Student Learning

Data Driven:

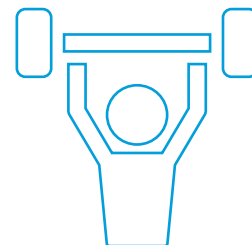
- Career Readiness Data
- KSDE Report Card
- Academic Assessment Data
- Walkthrough Data
- Stakeholder Perceptions



Boost Student Attendance



Enhance Individualized Support



Strengthen Resilience

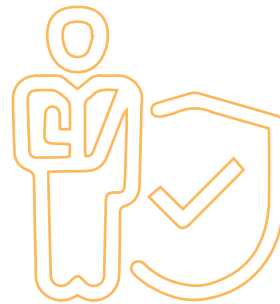
Build for the Future

Data Driven:

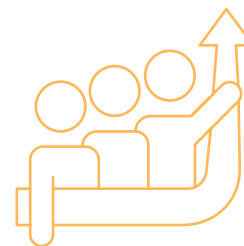
- Stakeholder Perceptions
- Facility Capacity
- School Program Needs
- Demographic Study
- Homeland Security Assessment



Inspire Innovative Spaces



Ensure Safety & Security



**Accommodate Expected
Enrollment Growth**



LONG-TERM GOALS

Instructional Targets

Maize USD 266 will demonstrate progress through long-term goals outlined below.



Increase Graduation Rate

By 2028, the high school graduation rate will increase from 95.2% to 96%.



Post-Secondary Success Rate

By 2028, the post-secondary success rate will increase from 69.6% to 72.1%.



Reading Proficiency

By 2028, the reading proficiency rate will increase from 73% to 80% on the Kansas State Assessment.



Math Proficiency

By 2028, the math proficiency rate will increase from 77% to 85% on the Kansas State Assessment.