



# SEAHAWK TALK



SEPTEMBER 15-21, 2024

## Coming Up:

**September 17:** SAT/ACT Prep Workshops

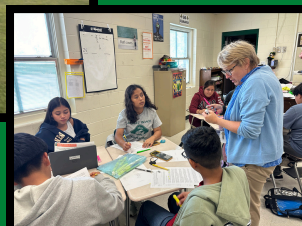
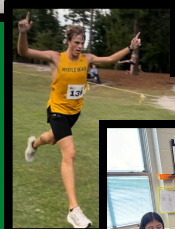
**September 18:** College Application Day

**September 19:** PSTO Meeting

**September 20:** Coffee House & Voter Registration

**September 24:** Parent/Teacher Conferences

**September 26:** School Improvement Council



## Principal's Message

Kristin Altman

Hi Seahawks,

We had another great week at The Beach! Thank you so much to all of our student leaders and teacher sponsors who made Club Rush a great success! We have already had a substantial increase in club memberships and are so proud of our students for taking advantage of these extracurricular opportunities.

To ensure our students' success, please be reminded of our MBHS policies and expectations as outlined in our Student Handbook. Some of the most common policies that should be reviewed are our cell phone, dress code, and tardy policies. Remember, students must arrive to campus early enough to go through the

search process and still make it to their 1st block classes on time; the search line does not provide an excuse for being late to class. We recommend all students arrive to campus by 8:00 am. We also want to remind all students, particularly those taking PACE courses that they must exit campus through the main entrance lobby doors. For security, no other exit is permitted for use during the school day.

All students and parents, please be reminded the safest place for our students to be on campus is in the classroom with their assigned teachers, learning. We ask our students and teachers to limit the number of passes issued to students to increase their access to instruction and reduce their time spent out of the classroom during each block. If your student has any special needs in terms of access to the restroom, please let administration and the school nurse know.

Interims will be issued on September 20. Remember, these grades mark the halfway point in our First Quarter. In high school, final averages at the end of the semester are calculated as 1st Quarter (40%), 2nd Quarter (40%), and Final Exam (20%). The interim grade is not stored, but an progress mark to let students and parents know how they are performing up to the mid-point of the quarter.

We encourage all students and parents to attend Parent/Teacher Conferences on September 24 from 5-7 pm. This will be an excellent opportunity to discuss current progress and any additional supports which may be necessary to ensure your student's success.


Dear Parents and Guardians,


# Parent-Teacher Conferences

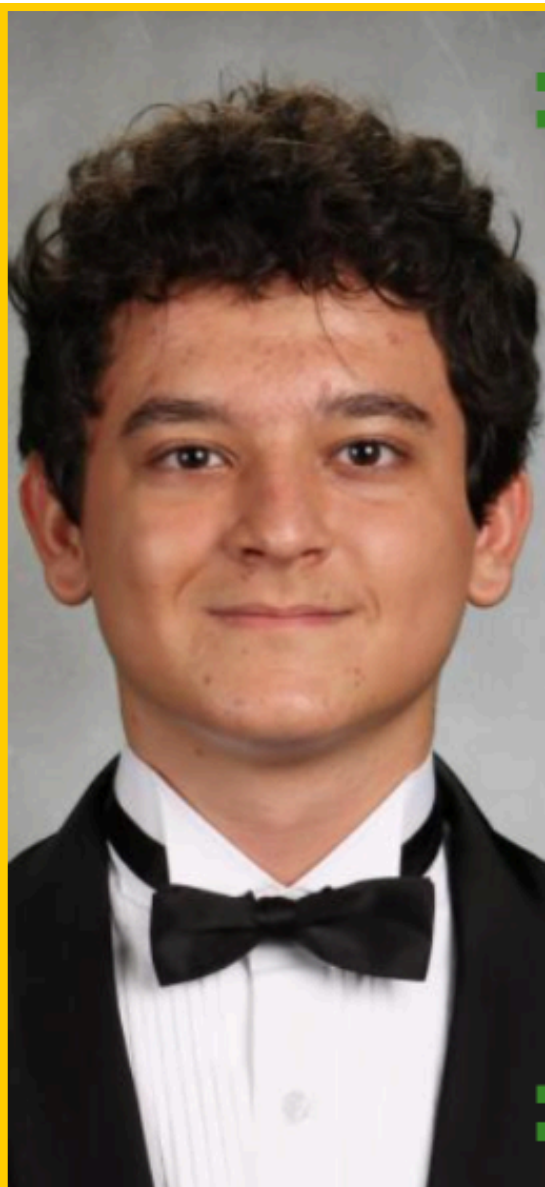

We value your involvement in your child's education and are excited to invite you to our upcoming Parent-Teacher Conferences.

Interims are issued on September 20 as a mid-way point for the 1st Quarter.

[Join Us Now](#)

 September 24  
5-7 pm

 Myrtle Beach High School



CONGRATULATIONS!!

Fabian  
Lala

National Merit  
Semifinalist



# HORRY COUNTY SCHOOLS SUPERINTENDENT SEARCH PUBLIC FORUMS

**T**he Horry County Board of Education, with the assistance of BWP & Associates, is now searching for a new superintendent. We want our community members to help us identify the characteristics to look for in our new superintendent! There are two ways you can help:

- Fill out an online survey on our website at <https://bit.ly/2024hcssuperintendentsearch>. This survey will be available from September 16 to September 30, 2024.
- Attend one of the following public Open Forum meetings:

## **Tuesday, September 24, at 6:00 p.m.**

- Green Sea Floyds Middle/High School  
Location: Community Room  
4990 Tulip Grove Rd, Green Sea, SC 29545
- Myrtle Beach Middle School  
Location: Cafeteria  
3101 N Oak St, Myrtle Beach, SC 29577
- Whittemore Park Middle School  
Location: Auditorium  
500 El Bethel Rd, Conway, SC 29527

## **Wednesday, September 25, at 6:00 p.m.**

- Ocean Bay Middle School  
Location: Auditorium  
905 International Dr, Myrtle Beach, SC 29579
- North Myrtle Beach Middle School  
Location: Auditorium  
11240 SC-90, Little River, SC 29566
- St. James Middle School  
Location: Auditorium  
9775 St James Rd, Murrells Inlet, SC 29576

## **Thursday, September 26, at 6:00 p.m.**

- Aynor Middle School  
Location: Cafeteria  
400 Frye Rd, Galivants Ferry, SC 29544
- Loris Middle School  
Location: Community Room  
5209 SC-66, Loris, SC 29569
- Socastee Middle School  
Location: Cafeteria  
151 Sheffield Pkwy, Myrtle Beach, SC 29588



# INSPIRING POSSIBILITIES

# Parking MBHS

If you plan to drive to school during the 2024 - 2025 school year, please be sure to apply for a parking pass. Parking passes cost \$20.00 and can be paid for by visiting the [My Payments Plus](#) website. A pass will be issued to you once you have paid, completed the online parking pass application and uploaded all required forms.

Only one parking pass will be issued to a student and passes will be issued on a first come, first served basis. Seniors have a designated parking area, but parking spots will NOT be assigned. Please note, all outstanding fines must be paid in order to receive a parking pass. Vehicles parked on campus that do not display a parking pass or that are parked illegally are subject to ticketing and tow.

# Technology MBHS

In order to receive a laptop for use during the school year, all outstanding technology fines must be paid. Please log into your account on the My Payments Plus website to check on any outstanding fines that may be owed. In order to take a laptop home and receive a charging cord, the \$25.00 technology fee must be paid.

 <b>Seahawks Lunch</b> 					
Please note: <u>Menus are subject to change without notice due to vendor shortages, market conditions, and special events.</u>					
MENUS THIS WEEK:	MONDAY SEPT 16	TUESDAY SEPT 17	WEDNESDAY SEPT 18	THURSDAY SEPT 19	FRIDAY SEPT 20
<b>DAILY LUNCH:</b>  	Entrées:	Entrées:	Entrées:	Entrées:	Entrées:
	Mandarin Orange Chicken Bowl Fruit Plate Sandwich Bar Chicken Nuggets Pizza Uncrustable	Beef or Chicken Taco Chicken Sandwich Sandwich Bar Pizza Fruit Plate Uncrustable	Chicken Tenders w/ Roll Chicken Sandwich Sandwich Bar Pizza Fruit Plate Uncrustable	Chicken Bog Chicken Sandwich Sandwich Bar Pizza Fruit Plate Uncrustable	Bosco Sticks Pizza crunchers Chicken Sandwich Sandwich Bar Fruit Plate Uncrustable
	Veggies & Sides:	Veggies & Sides:	Veggies & Sides:	Veggies & Sides:	Veggies & Sides:
	Steamed Broccoli Veggie Nibblers Turkey Chef salad	Veggie Nibblers Lettuce & Tomato Pinto Beans Turkey Chef Salad	Veggie Nibblers French Fries Buttered Corn Turkey Chef Salad	Veggie Nibblers Green Beans Sweet Potato Patties Turkey Chef Salad	Veggie Nibblers Garden Salad Rosted Sliced carrots Turkey Chef salad



**DEADLINE: SEPT. 20TH**

# HOCO 2024 TSHIRT DESIGN CONTEST

Winning Design **MUST**:

- Include "Homecoming 2024"
- Reflect Theme "**Reel in a WIN, Let's Cage the Sharks in!**"
- Design can be hand drawn or created digitally.



**Submit designs to Holly McMillan  
by Sept. 20th @ 1:00 pm**

**DROP OFF in the Library or email to:**

**HMCMILLAN@HORRYCOUNTYSCHOOLS.NET**



**2024 HOMECOMING  
SEPTEMBER 30-OCTOBER 4, 2024**

**“REEL IN THE WIN, CAGE  
THE SHARKS”**

---

**SPIRIT WEEK THEMES**

**MONDAY: JERSEY DAY**

**TUESDAY: TWIN DAY**

**WEDNESDAY: HAWAIIAN SHIRT DAY**

**THURSDAY: COUNTRY VS. COUNTRY CLUB**

**FRIDAY: SEAHAWK COLORS**

**Wear your camo to the game!**



# Attention: SEAHAWKS



Sponsors:  
Dr. Daft  
Mrs. Corrie  
Ms. Clark

FCA  
Search  
Begins  
7:20am

Meetings Thursdays: 7:30am to 8:00am D105

4TH ANNUAL

## TRUNK OR TREAT

**Doug Shaw Memorial Stadium**

Costumes are welcome!

5pm in the parking lot before  
the Varsity football game

Free to the public

October 25, 2024

Hosted by MBHS

Shark Tank style program for  
business-oriented teens!



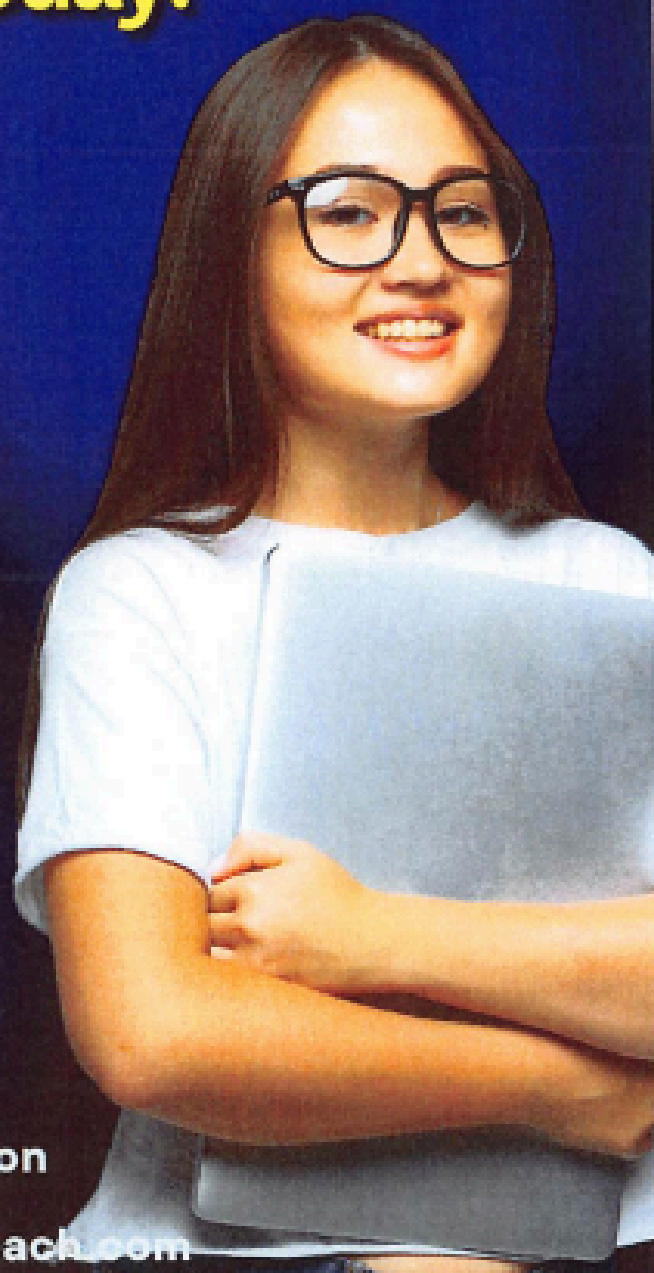
**Register Today!**

# **Mind Your Own Biz**

**THIS PROGRAM IS OPEN TO  
AGES 13-18  
TUESDAYS AND THURSDAYS  
5:00-6:15PM  
STARTS SEPTEMBER 17TH**

For more information  
please email

[psummit@cityofmyrtlebeach.com](mailto:psummit@cityofmyrtlebeach.com)





# 2024 ED-OP COLLEGE FAIR

*October 9, 2024*  
*Myrtle Beach High Gymnasium*

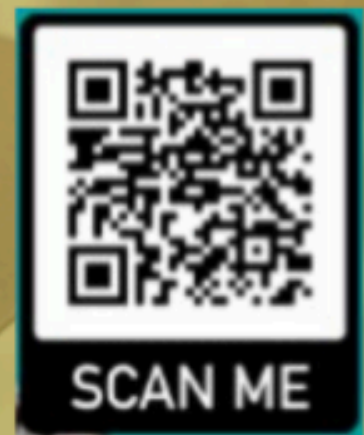
*10:30am - 11:30am*

Meet College  
Representatives &  
Learn about Programs  
& Scholarships

**PRE-REGISTRATION IS  
REQUIRED at :  
StriveFair.com**

SENIOR students may  
register at StriveFair.com  
and select the 10/9/24  
event at Myrtle Beach High  
School. You will receive a  
barcode by text & email  
which you will use to enter  
the gymnasium a few hours  
prior to this event.

**TO REGISTER:**



**\*This event is open to  
SENIORS ONLY**



*Over 50*  
Colleges  
expected to  
participate

*For more information: See your Counselor*



# SEAHAWK SUPPORTS FOR MENTAL HEALTH

## YOUR SCHOOL COUNSELOR

MYRON SHULER  
ANNE CRAWFORD  
STEPHANIE BYRDIC (LEAD COUNSELOR)  
SARAH KOHLMAN  
DEBBIE CORRIE

LAST NAMES A-DA  
LAST NAMES DE-I  
LAST NAMES J-L  
LAST NAMES M-RI  
LAST NAMES RO-Z

## RBHS COUNSELORS

REHABILITATIVE BEHAVIORAL HEALTH SERVICES (RBHS) IS DESIGNED TO SERVE STUDENTS WHO HAVE EMOTIONAL AND/OR BEHAVIORAL NEEDS. THE PROGRAM IS A SCHOOL-CENTERED, GOAL-DIRECTED, FAMILY-SUPPORTIVE COUNSELING SERVICE TO HELP STABILIZE OR STRENGTHEN THE CHILD'S PLACEMENT AND IMPROVE STUDENT ACADEMIC AND SOCIAL PERFORMANCES. STUDENTS ARE REFERRED FOR THIS SERVICE BY THEIR SCHOOL COUNSELOR.

OUR RBHS COUNSELORS: DANIELLE PRITCHARD & LATOYA SIMMONS.

## CARE SOLACE

CARE SOLACE IS A COMPLIMENTARY AND CONFIDENTIAL CARE COORDINATION SERVICE THAT CAN HELP YOU QUICKLY FIND MENTAL HEALTH OR SUBSTANCE-USE TREATMENT OPTIONS MATCHED TO YOUR NEEDS.

CALL 888-515-0595, AVAILABLE 24/7/365 IN ANY LANGUAGE. VISIT [WWW.CARESOLACE.COM/HORRYCOUNTY](http://WWW.CARESOLACE.COM/HORRYCOUNTY) AND CLICK "BOOK APPOINTMENT" FOR ASSISTANCE BY VIDEO CHAT, EMAIL, OR PHONE.

## MENTAL HEALTH CRISIS LINE

CALL THE NATIONAL SUICIDE PREVENTION LIFELINE AT 1-800-273-8255, OR TEXT THE CRISIS TEXT LINE (TEXT HELLO TO 741741). BOTH SERVICES ARE FREE AND AVAILABLE 24 HOURS A DAY, SEVEN DAYS A WEEK. ALL CALLS ARE CONFIDENTIAL.

CONTACT SOCIAL MEDIA OUTLETS DIRECTLY IF YOU ARE CONCERNED ABOUT A FRIEND'S SOCIAL MEDIA UPDATES OR DIAL 911 IN AN EMERGENCY.

**988**  
SUICIDE  
& CRISIS  
LIFELINE





# Athletic Updates

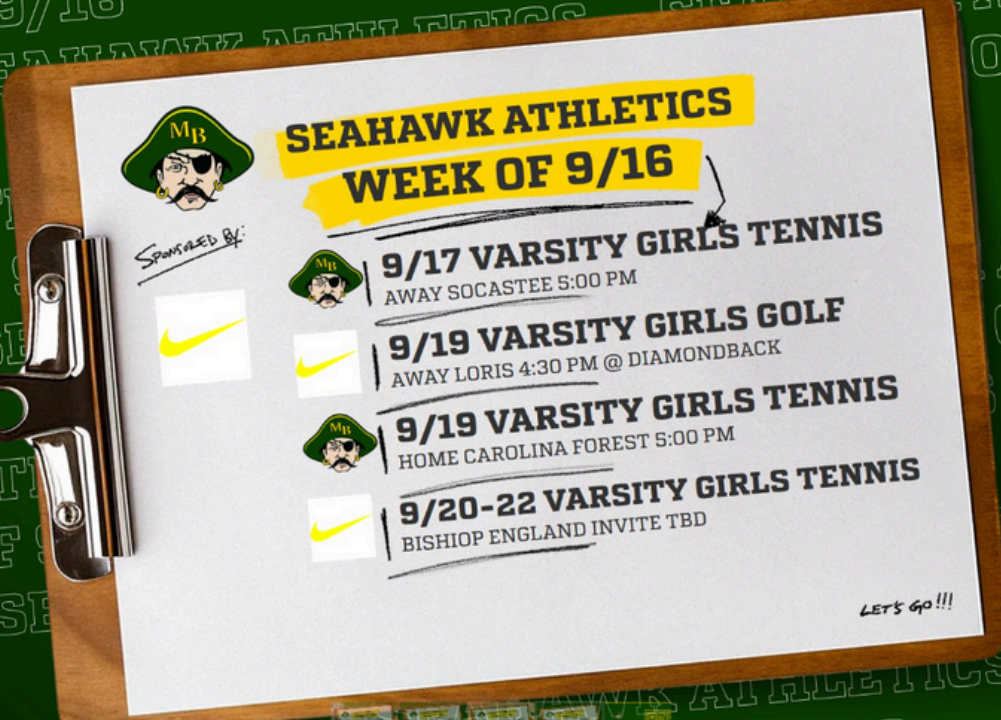
#MBSEAHAWKS






# Athletic Updates





#MBSEAHAWKS



A schedule card for Seahawk Athletics Week of 9/16, featuring a pirate mascot logo, a Nike logo, and a list of events. The card is on a clipboard with a silver clip on the left. The background is green with repeating text "SEAHAWK ATHLETICS WEEK OF 9/16".

**SEAHAWK ATHLETICS  
WEEK OF 9/16**

Sponsored By: 

-  **9/17 VARSITY GIRLS TENNIS**  
AWAY SOCASTEE 5:00 PM
-  **9/19 VARSITY GIRLS GOLF**  
AWAY LORIS 4:30 PM @ DIAMONDBACK
-  **9/19 VARSITY GIRLS TENNIS**  
HOME CAROLINA FOREST 5:00 PM
-  **9/20-22 VARSITY GIRLS TENNIS**  
BISHOP ENGLAND INVITE TBD

LET'S GO!!!



A schedule card for Seahawk Athletics Week of 9/16, featuring a pirate mascot logo, a Nike logo, and a list of events. The card is on a clipboard with a silver clip on the left. The background is green with repeating text "SEAHAWK ATHLETICS WEEK OF 9/16".

**SEAHAWK ATHLETICS  
WEEK OF 9/16**

Sponsored By: 

-  **9/18 VARSITY G/B CROSS COUNTRY**  
HOME @ MARKET COMMON 5:30 PM
-  **9/21 VARSITY G/B SWIM**  
AWAY @ SOCASTEE 8:00 AM
-  **9/21 JV/VARSITY COMPETITION CHEER**  
AWAY @ NORTH MYRTLE BEACH 9:00 AM

LET'S GO!!!



# Athletic Updates

.....  
#MBSEAHAWKS

## 2024 MYRTLE BEACH SEAHAWKS



LAKE CITY

**AUGUST 23**

DOUG SHAW MEMORIAL STADIUM



WEST FLORENCE

**AUGUST 30**

DOUG SHAW MEMORIAL STADIUM



AT SUMTER

**SEPTEMBER 6**

SUMTER MEMORIAL STADIUM

**BYE SEPTEMBER 13**



AT IRMO

**SEPTEMBER 20**

W.C. HAWKINS STADIUM



AT CANE BAY

**SEPTEMBER 27**

CANE BAY FOOTBALL STADIUM



ST. JAMES

**OCTOBER 4**

DOUG SHAW MEMORIAL STADIUM



CONWAY

**OCTOBER 11**

DOUG SHAW MEMORIAL STADIUM



AT SOCASTEE

**OCTOBER 18**

BRAVES STADIUM



CAROLINA FOREST

**OCTOBER 25**

DOUG SHAW MEMORIAL STADIUM



AT NORTH MYRTLE BEACH

**NOVEMBER 1**

CHIEFS STADIUM

LB ANTONIO BROWN

QB GIBSON  
GOODROE

WR JOHN  
SIMMONS

LB ASHTON KEITH





# Athletic Updates

.....  
#MBSEAHAWKS

## 2024 MYRTLE BEACH CROSS COUNTRY SCHEDULE

AUGUST 31: NORTH MYRTLE BEACH INVITATIONAL (AWAY @8:AM)

SEPTEMBER 4TH: CAROLINA FOREST (AWAY @5:30)

SEPTEMBER 11TH: NORTH MYRTLE BEACH (AWAY @5:30)

SEPTEMBER 14TH: WACCAMAW INVITATIONAL (AWAY @8:30AM)

SEPTEMBER 18TH: MYRTLE BEACH (HOME @5:30)

SEPTEMBER 25TH: NORTH MYRTLE BEACH (AWAY @5:30)

OCTOBER 2ND: SOCASTEE HIGH SCHOOL (AWAY @5:30)

OCTOBER 9TH: MYRTLE BEACH (HOME @5:30)

OCTOBER 12TH: COACHES CLASSIC (AWAY @TBA)

OCTOBER 23: COUNTY CHAMPIONSHIP- NMB (AWAY @TBA)

OCTOBER 30TH: REGION CHAMPIONSHIP- NMB (AWAY @4:00)

NOVEMBER 15: STATE QUALIFIER (AWAY @TBA)

NOVEMBER 21: STATE CHAMPIONSHIP (AWAY @TBA)



# Athletic Updates

.....  
#MBSEAHAWKS



A poster for the Seahawk Tennis 2024 Schedule. The background is light gray with faint, stylized yellow and green tennis rackets. The title 'SEAHAWK TENNIS' is in large green letters, with '2024 SCHEDULE' below it. A yellow box on the left says 'HOME MATCHES AT 5:00 PM AWAY TBA'. A yellow box on the right says 'SENIOR NIGHT'. A yellow box at the bottom says '9/20 - 22 Bishop England Tournament Charleston'. The schedule table is in the center, with dates in the first column and opponents/locations in the second column.

8/27	v. Waccamaw
8/29	@ West Florence
9/5	@ Waccamaw
9/10	v. St. James
9/12	v. Conway
9/17	@ Socastee
9/19	v. Carolina Forest
9/24	@ North Myrtle Beach
9/26	@ St. James
10/1	@ Conway
10/3	<b>SENIOR NIGHT</b> v. Socastee
10/8	@ Carolina Forest
10/10	V. North Myrtle Beach

9/20 - 22 Bishop England Tournament Charleston

# IN AN EMERGENCY TAKE ACTION



## **HOLD! In your room or area. Clear the halls.**

### **STUDENTS**

Clear the hallways and remain in room or area until the "All Clear" is announced  
Do business as usual

### **ADULTS**

Close and lock the door  
Account for students and adults  
Do business as usual



## **SECURE!**

### **Get inside. Lock outside doors.**

### **STUDENTS**

Return to inside of building  
Do business as usual

### **ADULTS**

Bring everyone indoors  
Lock outside doors  
Increase situational awareness  
Account for students and adults  
Do business as usual



## **LOCKDOWN! Locks, lights, out of sight.**

### **STUDENTS**

Move away from sight  
Maintain silence  
Do not open the door

### **ADULTS**

Recover students from hallway if possible  
Lock the classroom door  
Turn out the lights  
Move away from sight  
Maintain silence  
Do not open the door  
Prepare to evade or defend



## **EVACUATE! (A location may be specified)**

### **STUDENTS**

Leave stuff behind if required to  
If possible, bring your phone  
Follow instructions

### **ADULTS**

Lead students to Evacuation location  
Account for students and adults  
Notify if missing, extra or injured students or adults



## **SHELTER! Hazard and safety strategy.**

### **STUDENTS**

Use appropriate safety strategy for the hazard

#### **Hazard**

Tornado  
Hazmat  
Earthquake  
Tsunami

#### **Safety Strategy**

Evacuate to shelter area  
Seal the room  
Drop, cover and hold  
Get to high ground

### **ADULTS**

Lead safety strategy  
Account for students and adults  
Notify if missing, extra or injured students or adults



# HCS Let's Make It CLEAR

Horry County Schools



A NEW DISTRICTWIDE PROTOCOL FOR THE 2024-25 SCHOOL YEAR.

HCS has implemented new safety and security tools for the upcoming 2024-25 school year this fall, and here's what you'll need to know.

## Clear Backpacks

### WHAT

All students must carry clear backpacks if they carry a backpack to school. Students may carry a small, non-clear pouch in their backpack to hold personal items, such as cellphones, money, and hygiene products.

### WHY

Clear backpacks provide another tool to ensure our highest priority, which is the safety and security of all members of the HCS community. Many large organizations, including the NFL, collegiate stadiums, and large-scale event venues, have implemented similar clear bag policies.



## Security Screening

### WHAT

HCS has phased in screening devices in all schools for the 2024-25 school year. All individuals will be required to pass through screening devices when entering the building.

### WHY

Screening devices increase the safety of students, staff, and visitors by reducing opportunities for prohibited items to enter the building.





## BELL SCHEDULE

7:45 a.m.	School Doors Open
8:18 a.m.	Warning Bell
8:20-9:50 a.m.	1st Block
9:55-10:15 a.m.	Advisory
10:20-11:50 a.m.	2nd Block
11:55 a.m.-1:55 p.m.	3rd Block <ul style="list-style-type: none"> <li>1st Lunch: 12:00-12:25 p.m.</li> <li>2nd Lunch: 12:30-12:55 p.m.</li> <li>3rd Lunch: 1:00-1:25 p.m.</li> <li>4th Lunch: 1:30-1:55 p.m.</li> </ul>
2:00-3:30 p.m.	4th Block

## MBHS Tardy Policy

Tardies are assigned block by block.

Searches will be conducted every morning beginning at 7:45 a.m. Searches will not be considered as an excuse for being tardy to class.

Students who arrive tardy after 8:20 a.m. with an outside food/beverage purchased from a restaurant, cafe, etc. such as Starbucks or McDonalds, will have it confiscated. It may be picked up by the parent.

1st Tardy	2nd Tardy	3rd Tardy	4th Tardy	5th Tardy	6th Tardy
Administrator warning	Lunch Detention and parent notification by administrator	1 block of ISS and parent notification by administrator	1 day of ISS and parent notification by administrator	2 days of ISS and parent notification by administrator	1 day of OSS and parent notification by administrator
7th Tardy	8th Tardy				
2 Days of OSS and parent notification by administrator	Recommendation for an Evidentiary Hearing and parent notification by administrator				

\*A tardy is defined as not being inside the assigned classroom when the tardy bell rings. Office referrals for tardies are cumulative.





## CELL PHONES AND EARBUDS

During the instructional school day, cell phones, earbuds and similar electronic devices will remain silent and out-of-sight. This includes; inside classrooms (unless permitted by the teacher) and in hallways during class and class changes. Students may use these devices during lunch break.

To ensure safety, students are not permitted to walk around campus with:

- Cell phones out and actively talking on the phone
- Cell phone out and texting on the cell phones
- Earbuds in their ears
- Audio and video recording is not permitted and subject to suspension.

1st Offense	2nd Offense	3rd Offense	4th Offense	5th Offense
<p>Administrator warning, confiscation of cell phone/earbuds, and parent notification by administrator</p> <p>Students will be able to pick up their phone from Ms. Willis-Lines located at the front office security booth after 3:30 p.m.</p>	<p>1 day of ISS and cell phone/earbuds confiscated by administrator, and parent notification by administrator</p> <p>Students will be able to pick up their phone from Ms. Willis-Lines located at the front office security booth after 3:30 p.m.</p>	<p>2 days of ISS and cell phone/earbuds confiscated by administrator, and parent notification by administrator</p> <p>Parents will be able to pick up their phone from Ms. Willis-Lines located at the front office security booth after 3:30 p.m.</p>	<p>1 day of OSS and parent notification</p>	<p>2 days of OSS and parent notification</p>
6th Offense				
<p>Recommendation for an Evidentiary Hearing and parent notification by administrator</p>				



## OBSCENITY & PROFANITY POLICY

Obscene materials including, but not limited to illustrations (drawings, paintings, photographs, etc.) and oral, auditory, or written materials (books, letters, poems, videos, music, etc.) which are commercially or student produced are prohibited during school and at school sponsored activities. Students must choose their words carefully and consciously. Students using obscenities or profanities will be subject to OSS.

Consequences of using profanity are included in the chart below. However, if profanity is directed toward a staff member, the first offense will be a minimum of 3 days OSS or up to a recommendation of an evidentiary hearing.

1st Offense	2nd Offense	3rd Offense	4th Offense	5th Offense
1 day of ISS and parent notification by administrator	2 days of ISS and parent notification by administrator	1 day of OSS and parent notification by administrator	2 Days of OSS and parent notification by administrator	Recommendation for an Evidentiary Hearing and parent notification by administrator

**Consequences Every Offense:** If a student chooses not to follow the dress code requirements, he/she will be asked to call home for a change of clothes. The student will not be allowed to return to class until the situation has been corrected. The student will remain in ISS until a change of clothes has arrived.

## Hall Pass Policy

Any student who leaves a classroom during instructional time must have a hall pass from the teacher.

Only one student is permitted to leave the classroom at one time.

Students are not permitted to leave the classroom to go to the restroom during the first or last fifteen minutes of class. Teacher discretion is advised in the event of an emergency and contact with the parent should be made.

Excessive requests to use the restroom will be referred to administration for parent contact to confirm any extenuating circumstances.





## MBHS STUDENT DRESS CODE 2024-2025

Student dress should be confined to clothes that are reasonable, practical, and in good taste for school. School attire should reflect good taste, cleanliness, and comfort.

The school will make judgments and decisions as needed to preserve the health, safety, and decorum of students. Student cooperation is expected in the following areas:

- All students are required to wear appropriate footwear for school (no slippers).
- All shirts and tops must cover the midriff at all times. The following are examples of clothing that is unacceptable: tank tops with straps thinner than 2 inches, strapless, spaghetti straps, off-the-shoulder, cut-out designs, low-cut shirts, bare-back, fishnet stockings, sheer or mesh clothing that does not have an appropriate blouse or shirt underneath, etc. No pajama pants are allowed. (Students will be required to change clothes.)
- If students wear leggings, the bottom of the student's shirt must cover the student's midriff while in leggings, and the bottom of the shirt should not show the midriff if a student raises their arms.
- All pants and shorts must fit at the waist. No sagging or low riding pants or shorts will be permitted. Clothing must cover undergarments when sitting, standing, or bending.
- Hemlines and slits on dresses, skirts, and shorts (including bike shorts) above mid-thigh are not acceptable. Length cannot be shorter than the tip of the fingers when arms are placed straight at the sides of the body.
- Pants may not have holes that are visible above the tip of the fingers when arms are placed straight at the sides of the body. Leggings, or form fitting pants must be worn with a shirt that covers the student's hips.
- Head wear (including scarves, bandanas, bonnets, durags, or other head dressings) may not be brought on to campus, unless approved by the principal.
- Bandanas of any kind and color are prohibited.
- Hoods from sweatshirts or jackets may not be worn in the building for any reason.
- Face paint is not permissible.
- Clothing or jewelry that depicts any "gang style" writing; illegal activity; sexually related or obscene gestures and material; tobacco; drugs; alcohol; or words, pictures, or phrases that depicts violence or intimidation may not be worn.
- Any clothing or styles of dress that may be construed to provoke fear, violence, or intimidation, including gang related attire, is not acceptable.

**Consequences Every Offense:** If a student chooses not to follow the dress code requirements, he/she will be asked to call home for a change of clothes. The student will not be allowed to return to class until the situation has been corrected. The student will remain in ISS until a change of clothes has arrived.

<div>August 2024</div> <table><tr><th>S</th><th>M</th><th>T</th><th>W</th><th>T</th><th>F</th><th>S</th></tr><tr><td></td><td></td><td></td><td></td><td>1</td><td>2</td><td>3</td></tr><tr><td>4</td><td>5</td><td>6</td><td>7</td><td>8</td><td>9</td><td>10</td></tr><tr><td>11</td><td>12</td><td>13</td><td>14</td><td>15</td><td>16</td><td>17</td></tr><tr><td>18</td><td>19</td><td>20</td><td>21</td><td>22</td><td>23</td><td>24</td></tr><tr><td>25</td><td>26</td><td>27</td><td>28</td><td>29</td><td>30</td><td>31</td></tr></table>	S	M	T	W	T	F	S					1	2	3	4	5	6	7	8	9	10	11	12	13	14	15	16	17	18	19	20	21	22	23	24	25	26	27	28	29	30	31	<div>September 2024</div> <table><tr><th>S</th><th>M</th><th>T</th><th>W</th><th>T</th><th>F</th><th>S</th></tr><tr><td>1</td><td>2</td><td>3</td><td>4</td><td>5</td><td>6</td><td>7</td></tr><tr><td>8</td><td>9</td><td>10</td><td>11</td><td>12</td><td>13</td><td>14</td></tr><tr><td>15</td><td>16</td><td>17</td><td>18</td><td>19</td><td>20</td><td>21</td></tr><tr><td>22</td><td>23</td><td>24</td><td>25</td><td>26</td><td>27</td><td>28</td></tr><tr><td>29</td><td>30</td><td></td><td></td><td></td><td></td><td></td></tr></table>	S	M	T	W	T	F	S	1	2	3	4	5	6	7	8	9	10	11	12	13	14	15	16	17	18	19	20	21	22	23	24	25	26	27	28	29	30						<div>October 2024</div> <table><tr><th>S</th><th>M</th><th>T</th><th>W</th><th>T</th><th>F</th><th>S</th></tr><tr><td></td><td></td><td>1</td><td>2</td><td>3</td><td>4</td><td>5</td></tr><tr><td>6</td><td>7</td><td>8</td><td>9</td><td>10</td><td>11</td><td>12</td></tr><tr><td>13</td><td>14</td><td>15</td><td>16</td><td>17</td><td>18</td><td>19</td></tr><tr><td>20</td><td>21</td><td>22</td><td>23</td><td>24</td><td>25</td><td>26</td></tr><tr><td>27</td><td>28</td><td>29</td><td>30</td><td>31</td><td></td><td></td></tr></table>	S	M	T	W	T	F	S			1	2	3	4	5	6	7	8	9	10	11	12	13	14	15	16	17	18	19	20	21	22	23	24	25	26	27	28	29	30	31									
S	M	T	W	T	F	S																																																																																																																																	
				1	2	3																																																																																																																																	
4	5	6	7	8	9	10																																																																																																																																	
11	12	13	14	15	16	17																																																																																																																																	
18	19	20	21	22	23	24																																																																																																																																	
25	26	27	28	29	30	31																																																																																																																																	
S	M	T	W	T	F	S																																																																																																																																	
1	2	3	4	5	6	7																																																																																																																																	
8	9	10	11	12	13	14																																																																																																																																	
15	16	17	18	19	20	21																																																																																																																																	
22	23	24	25	26	27	28																																																																																																																																	
29	30																																																																																																																																						
S	M	T	W	T	F	S																																																																																																																																	
		1	2	3	4	5																																																																																																																																	
6	7	8	9	10	11	12																																																																																																																																	
13	14	15	16	17	18	19																																																																																																																																	
20	21	22	23	24	25	26																																																																																																																																	
27	28	29	30	31																																																																																																																																			
<div>November 2024</div> <table><tr><th>S</th><th>M</th><th>T</th><th>W</th><th>T</th><th>F</th><th>S</th></tr><tr><td></td><td></td><td></td><td></td><td></td><td>1</td><td>2</td></tr><tr><td>3</td><td>4</td><td>5</td><td>6</td><td>7</td><td>8</td><td>9</td></tr><tr><td>10</td><td>11</td><td>12</td><td>13</td><td>14</td><td>15</td><td>16</td></tr><tr><td>17</td><td>18</td><td>19</td><td>20</td><td>21</td><td>22</td><td>23</td></tr><tr><td>24</td><td>25</td><td>26</td><td>27</td><td>28</td><td>29</td><td>30</td></tr></table>	S	M	T	W	T	F	S						1	2	3	4	5	6	7	8	9	10	11	12	13	14	15	16	17	18	19	20	21	22	23	24	25	26	27	28	29	30	<div>December 2024</div> <table><tr><th>S</th><th>M</th><th>T</th><th>W</th><th>T</th><th>F</th><th>S</th></tr><tr><td>1</td><td>2</td><td>3</td><td>4</td><td>5</td><td>6</td><td>7</td></tr><tr><td>8</td><td>9</td><td>10</td><td>11</td><td>12</td><td>13</td><td>14</td></tr><tr><td>15</td><td>16</td><td>17</td><td>18</td><td>19</td><td>20</td><td>21</td></tr><tr><td>22</td><td>23</td><td>24</td><td>25</td><td>26</td><td>27</td><td>28</td></tr><tr><td>29</td><td>30</td><td>31</td><td></td><td></td><td></td><td></td></tr></table>	S	M	T	W	T	F	S	1	2	3	4	5	6	7	8	9	10	11	12	13	14	15	16	17	18	19	20	21	22	23	24	25	26	27	28	29	30	31					<div>January 2025</div> <table><tr><th>S</th><th>M</th><th>T</th><th>W</th><th>T</th><th>F</th><th>S</th></tr><tr><td></td><td></td><td></td><td>1</td><td>2</td><td>3</td><td>4</td></tr><tr><td>5</td><td>6</td><td>7</td><td>8</td><td>9</td><td>10</td><td>11</td></tr><tr><td>12</td><td>13</td><td>14</td><td>15</td><td>16</td><td>17</td><td>18</td></tr><tr><td>19</td><td>20</td><td>21</td><td>22</td><td>23</td><td>24</td><td>25</td></tr><tr><td>26</td><td>27</td><td>28</td><td>29</td><td>30</td><td>31</td><td></td></tr></table>	S	M	T	W	T	F	S				1	2	3	4	5	6	7	8	9	10	11	12	13	14	15	16	17	18	19	20	21	22	23	24	25	26	27	28	29	30	31								
S	M	T	W	T	F	S																																																																																																																																	
					1	2																																																																																																																																	
3	4	5	6	7	8	9																																																																																																																																	
10	11	12	13	14	15	16																																																																																																																																	
17	18	19	20	21	22	23																																																																																																																																	
24	25	26	27	28	29	30																																																																																																																																	
S	M	T	W	T	F	S																																																																																																																																	
1	2	3	4	5	6	7																																																																																																																																	
8	9	10	11	12	13	14																																																																																																																																	
15	16	17	18	19	20	21																																																																																																																																	
22	23	24	25	26	27	28																																																																																																																																	
29	30	31																																																																																																																																					
S	M	T	W	T	F	S																																																																																																																																	
			1	2	3	4																																																																																																																																	
5	6	7	8	9	10	11																																																																																																																																	
12	13	14	15	16	17	18																																																																																																																																	
19	20	21	22	23	24	25																																																																																																																																	
26	27	28	29	30	31																																																																																																																																		
<div>February 2025</div> <table><tr><th>S</th><th>M</th><th>T</th><th>W</th><th>T</th><th>F</th><th>S</th></tr><tr><td></td><td></td><td></td><td></td><td></td><td></td><td>1</td></tr><tr><td>2</td><td>3</td><td>4</td><td>5</td><td>6</td><td>7</td><td>8</td></tr><tr><td>9</td><td>10</td><td>11</td><td>12</td><td>13</td><td>14</td><td>15</td></tr><tr><td>16</td><td>17</td><td>18</td><td>19</td><td>20</td><td>21</td><td>22</td></tr><tr><td>23</td><td>24</td><td>25</td><td>26</td><td>27</td><td>28</td><td></td></tr></table>	S	M	T	W	T	F	S							1	2	3	4	5	6	7	8	9	10	11	12	13	14	15	16	17	18	19	20	21	22	23	24	25	26	27	28		<div>March 2025</div> <table><tr><th>S</th><th>M</th><th>T</th><th>W</th><th>T</th><th>F</th><th>S</th></tr><tr><td></td><td></td><td></td><td></td><td></td><td></td><td>1</td></tr><tr><td>2</td><td>3</td><td>4</td><td>5</td><td>6</td><td>7</td><td>8</td></tr><tr><td>9</td><td>10</td><td>11</td><td>12</td><td>13</td><td>14</td><td>15</td></tr><tr><td>16</td><td>17</td><td>18</td><td>19</td><td>20</td><td>21</td><td>22</td></tr><tr><td>23</td><td>24</td><td>25</td><td>26</td><td>27</td><td>28</td><td>29</td></tr><tr><td>30</td><td>31</td><td></td><td></td><td></td><td></td><td></td></tr></table>	S	M	T	W	T	F	S							1	2	3	4	5	6	7	8	9	10	11	12	13	14	15	16	17	18	19	20	21	22	23	24	25	26	27	28	29	30	31						<div>April 2025</div> <table><tr><th>S</th><th>M</th><th>T</th><th>W</th><th>T</th><th>F</th><th>S</th></tr><tr><td></td><td></td><td>1</td><td>2</td><td>3</td><td>4</td><td>5</td></tr><tr><td>6</td><td>7</td><td>8</td><td>9</td><td>10</td><td>11</td><td>12</td></tr><tr><td>13</td><td>14</td><td>15</td><td>16</td><td>17</td><td>18</td><td>19</td></tr><tr><td>20</td><td>21</td><td>22</td><td>23</td><td>24</td><td>25</td><td>26</td></tr><tr><td>27</td><td>28</td><td>29</td><td>30</td><td></td><td></td><td></td></tr></table>	S	M	T	W	T	F	S			1	2	3	4	5	6	7	8	9	10	11	12	13	14	15	16	17	18	19	20	21	22	23	24	25	26	27	28	29	30			
S	M	T	W	T	F	S																																																																																																																																	
						1																																																																																																																																	
2	3	4	5	6	7	8																																																																																																																																	
9	10	11	12	13	14	15																																																																																																																																	
16	17	18	19	20	21	22																																																																																																																																	
23	24	25	26	27	28																																																																																																																																		
S	M	T	W	T	F	S																																																																																																																																	
						1																																																																																																																																	
2	3	4	5	6	7	8																																																																																																																																	
9	10	11	12	13	14	15																																																																																																																																	
16	17	18	19	20	21	22																																																																																																																																	
23	24	25	26	27	28	29																																																																																																																																	
30	31																																																																																																																																						
S	M	T	W	T	F	S																																																																																																																																	
		1	2	3	4	5																																																																																																																																	
6	7	8	9	10	11	12																																																																																																																																	
13	14	15	16	17	18	19																																																																																																																																	
20	21	22	23	24	25	26																																																																																																																																	
27	28	29	30																																																																																																																																				
<div>May 2025</div> <table><tr><th>S</th><th>M</th><th>T</th><th>W</th><th>T</th><th>F</th><th>S</th></tr><tr><td></td><td></td><td></td><td></td><td>1</td><td>2</td><td>3</td></tr><tr><td>4</td><td>5</td><td>6</td><td>7</td><td>8</td><td>9</td><td>10</td></tr><tr><td>11</td><td>12</td><td>13</td><td>14</td><td>15</td><td>16</td><td>17</td></tr><tr><td>18</td><td>19</td><td>20</td><td>21</td><td>22</td><td>23</td><td>24</td></tr><tr><td>25</td><td>26</td><td>27</td><td>28</td><td>29</td><td>30</td><td>31</td></tr></table>	S	M	T	W	T	F	S					1	2	3	4	5	6	7	8	9	10	11	12	13	14	15	16	17	18	19	20	21	22	23	24	25	26	27	28	29	30	31	<div>June 2025</div> <table><tr><th>S</th><th>M</th><th>T</th><th>W</th><th>T</th><th>F</th><th>S</th></tr><tr><td>1</td><td>2</td><td>3</td><td>4</td><td>5</td><td>6</td><td>7</td></tr><tr><td>8</td><td>9</td><td>10</td><td>11</td><td>12</td><td>13</td><td>14</td></tr><tr><td>15</td><td>16</td><td>17</td><td>18</td><td>19</td><td>20</td><td>21</td></tr><tr><td>22</td><td>23</td><td>24</td><td>25</td><td>26</td><td>27</td><td>28</td></tr><tr><td>29</td><td>30</td><td></td><td></td><td></td><td></td><td></td></tr></table>	S	M	T	W	T	F	S	1	2	3	4	5	6	7	8	9	10	11	12	13	14	15	16	17	18	19	20	21	22	23	24	25	26	27	28	29	30						<div>First day of school: Aug. 19</div> <div>Last day of school: June 6</div> <div>Last day for teachers: June 9</div> <div><div></div> Schools Closed</div> <div><div></div> Schools Closed/Possible Make-up Days</div> <div><div></div> Teacher Work/Staff Development Days - Student Holidays</div> <div><div></div> Additional Staff Development Day for Teachers - Approved by the Board</div> <div><div></div> 2 1/2 Hour Early Dismissal for Students</div> <div>Transportation/Bus Offices:</div> <table><tr><td>Aynor.....</td><td>843.488.7125</td></tr><tr><td>Carolina Forest.....</td><td>843.236.0705</td></tr><tr><td>Conway.....</td><td>843.488.6094</td></tr><tr><td>Green Sea Floysds.....</td><td>843.392.3134</td></tr><tr><td>Loris.....</td><td>843.390.6822</td></tr><tr><td>Myrtle Beach.....</td><td>843.445.2041</td></tr><tr><td>North Myrtle Beach.....</td><td>843.399.8575</td></tr><tr><td>Socastee.....</td><td>843.293.6941</td></tr><tr><td>St. James.....</td><td>843.650.1937</td></tr><tr><td>District Transportation Office.....</td><td>843.488.6957</td></tr></table>	Aynor.....	843.488.7125	Carolina Forest.....	843.236.0705	Conway.....	843.488.6094	Green Sea Floysds.....	843.392.3134	Loris.....	843.390.6822	Myrtle Beach.....	843.445.2041	North Myrtle Beach.....	843.399.8575	Socastee.....	843.293.6941	St. James.....	843.650.1937	District Transportation Office.....	843.488.6957																													
S	M	T	W	T	F	S																																																																																																																																	
				1	2	3																																																																																																																																	
4	5	6	7	8	9	10																																																																																																																																	
11	12	13	14	15	16	17																																																																																																																																	
18	19	20	21	22	23	24																																																																																																																																	
25	26	27	28	29	30	31																																																																																																																																	
S	M	T	W	T	F	S																																																																																																																																	
1	2	3	4	5	6	7																																																																																																																																	
8	9	10	11	12	13	14																																																																																																																																	
15	16	17	18	19	20	21																																																																																																																																	
22	23	24	25	26	27	28																																																																																																																																	
29	30																																																																																																																																						
Aynor.....	843.488.7125																																																																																																																																						
Carolina Forest.....	843.236.0705																																																																																																																																						
Conway.....	843.488.6094																																																																																																																																						
Green Sea Floysds.....	843.392.3134																																																																																																																																						
Loris.....	843.390.6822																																																																																																																																						
Myrtle Beach.....	843.445.2041																																																																																																																																						
North Myrtle Beach.....	843.399.8575																																																																																																																																						
Socastee.....	843.293.6941																																																																																																																																						
St. James.....	843.650.1937																																																																																																																																						
District Transportation Office.....	843.488.6957																																																																																																																																						

Any non-instructional day, including Saturdays, may be considered a make-up day, due to school cancellation.

#### Testing

Dates for SCREAY and SCPASS assessments are May 9 - June 6, 2025.  
 Dates for EOCEP - English II Reading, Algebra, Biology, and USHC assessments are the last 15 days of each semester. English II writing is the last 20 days of each semester.  
 Final exams for high school students are the last two days of the semester.

#### Interim Report and Report Card Dates

Interim reports will be issued on September 20, 2024, December 4, 2024, February 25, 2025, and May 6, 2025.

Report cards will be issued by October 30, 2024, January 27, 2025, April 2, 2025, and June 10, 2025.

#### Emergency Closings

If at any time HCS determines the need for a delayed opening, early dismissal, or school closure, notification will be made via our mass notification system, HCS-TV, the HCS website, the HCS Mobile App, all forms of HCS social media, as well as the local news media. Please ensure that your student's records contain current contact information that will enable HCS to reach you during the school day and after hours. Report changes of information to your school.

#### Make-Up Days

October 14, 2024, October 15, 2024, and February 18, 2025, are possible make-up days. Any non-instructional day, including Saturdays, may be considered a make-up day due to school cancellation.