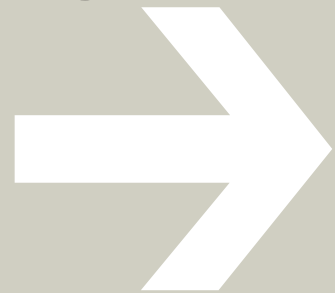




International
School of London
Qatar

STRATEGIC PLAN

V2 2024



Dear ISL Qatar Community,

At ISL Qatar, our core value of *Belonging* is the lens through which we have designed and are implementing our strategic plan for 2024-2027. We are dedicated to fostering an inclusive and supportive environment where every student feels valued and empowered.

Our plan emphasizes personalized learning, meaningful relationships, and optimized resources to ensure every member of our community thrives. By aligning our curriculum to meet individual needs and integrating technology into all areas of learning, we prepare our students to be adaptable, responsible, and digitally literate citizens.

Join us on this exciting journey as we build a future where everyone belongs and contributes positively to society, in line with ISL Qatar's Vision, *"Imagining and designing a better world together."*

Yours in partnership,

Sean Areias, Ed.D.
Head of School, ISL Qatar

Facts & Figures



Established in
2008.



230+ Staff representing
over 50 nationalities.



1170+ students from
over **80** countries.



12 languages taught through our
Mother Tongue Programmes.

Mission & Vision

Empowering learners to lead through compassion, collaboration, creativity and critical thinking.

Imagining and designing a better world together.

BELONGING

We value diversity, inclusivity, and individual perspective, promoting acceptance and appreciation.

INTEGRITY

We try our best to be honest and to do what is right.

We foster passion, perseverance and a growth mindset to overcome challenges and meet our goals.

GRIT

We promote empathy, compassion, and respect to foster a caring community.

KINDNESS

Core values

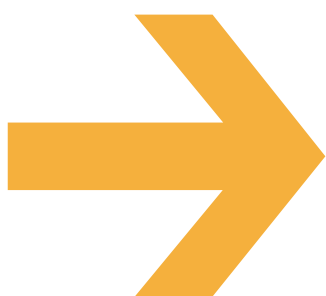
Definition of Learning

Learning at ISL Qatar is a joyful, dynamic process of discovery, inspiring innovation and transformation, whereby learners connect and engage purposefully with the world.

STRATEGIC GOAL

1

ISL Qatar will ensure equitable, personalized and inclusive learning principles and practices for all.



1.1

ISL Qatar will make sure our curriculum is well-aligned at all levels and meets individual student needs, giving every student an equitable and challenging learning experience.

1.2

ISL Qatar will use inclusive teaching methods so that every student can access learning, engage in various learning activities, and demonstrate their learning in different ways.

1.4

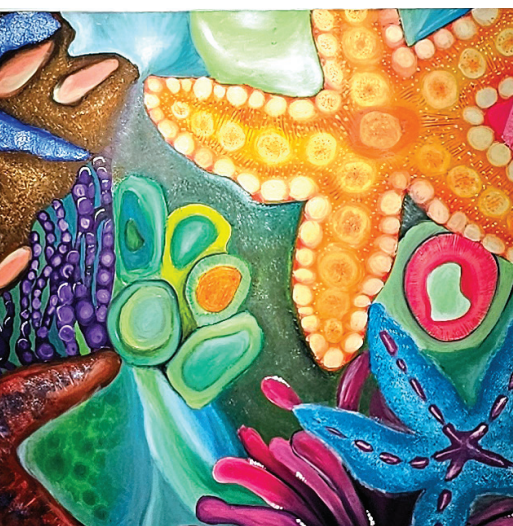
ISL Qatar will implement evidence-based strategies to support students' social and emotional well-being, aiming for positive behaviour, healthy relationships, and a safe school environment.

1.5

ISL Qatar will help students feel a sense of belonging and experience a successful transition during key points in their learning journey.

1.6

ISL Qatar's teachers will provide timely and meaningful feedback to improve learning, using ongoing evidence to help students set and reach their goals.



1.8

ISL Qatar will implement a Digital Age Curriculum that integrates technology into all areas of learning, ensuring students become adaptable, responsible, and digitally literate.

STRATEGIC GOAL

2

ISL Qatar will
build and sustain
meaningful
relationships to
enrich its community.



1.3

ISL Qatar will ensure students feel they have a say in their learning, can make choices about how they learn, and take ownership of their learning journey.



2.1

ISL Qatar will ensure that satisfaction surveys show an increasing number of stakeholders reporting improved effectiveness in our communication systems.

1.7

ISL Qatar will create personalized growth plans for staff, linking their goals to performance data and the school's strategic plan.



2.3

ISL Qatar will launch an Alumni program that encourages meaningful relationships and networking among graduates.

1.9

ISL Qatar will equip all students with the skills and motivation to contribute positively to society, in line with Qatar's National Vision 2030 for an Educated Population.

2.5

ISL Qatar will strengthen collaboration with the Parent School Association (PSA), building stronger relationships among members to increase community engagement.

STRATEGIC GOAL

3

ISL Qatar will optimize resources and spaces in both the current and new campus to support programs and foster community wellbeing.



2.2

ISL Qatar will strengthen community relationships through the arts, athletics, activities, and other school-wide events by increasing participation and engagement.



3.1

ISL Qatar will develop and implement technology systems that enhance learning, operations, leadership, and cybersecurity and data privacy.

2.4

ISL Qatar will build multiple sustainable partnerships with external organizations to fulfill the school's mission and vision, while creating internal structures to ensure the continuation of these partnerships and projects.

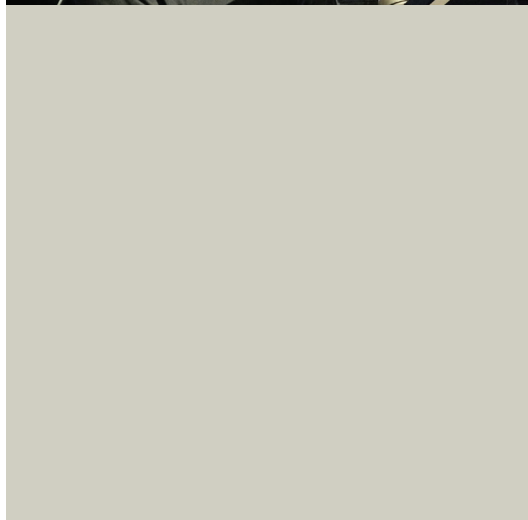


3.3

In our current campus, ISL Qatar will improve recreational spaces that are developmentally appropriate for all students.

2.6

ISL Qatar's overall school culture will reflect our core values, with a strong focus on the well-being of students and staff.



STRATEGIC GOAL

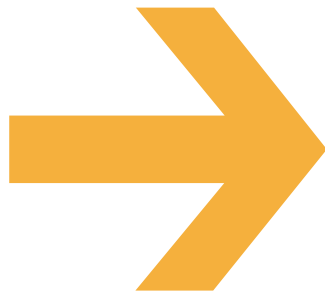
4

ISL Qatar will ensure long-term success and growth through effective governance, proactive financial planning and sustainable leadership development.



3.2

ISL Qatar will relocate to a purpose-built campus that embodies our mission, vision, and values and meets the needs of our learners.

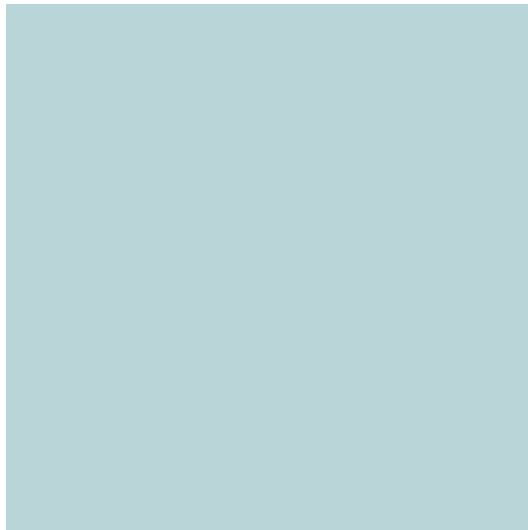


4.1

ISL Qatar will implement an enhanced governance framework that supports sustainable growth and future-ready education.

3.4

ISL Qatar's timetable will improve how we use our physical space and time, supporting learning, collaboration and well-being.



4.2

ISL Qatar will ensure its long-term financial plan optimizes the school's growth and success.



4.3

ISL Qatar will implement a leadership development plan to ensure strong operational performance and continuity.



International
School of London
Qatar

Scan the
QR code
for contact
details



This is Us!

