

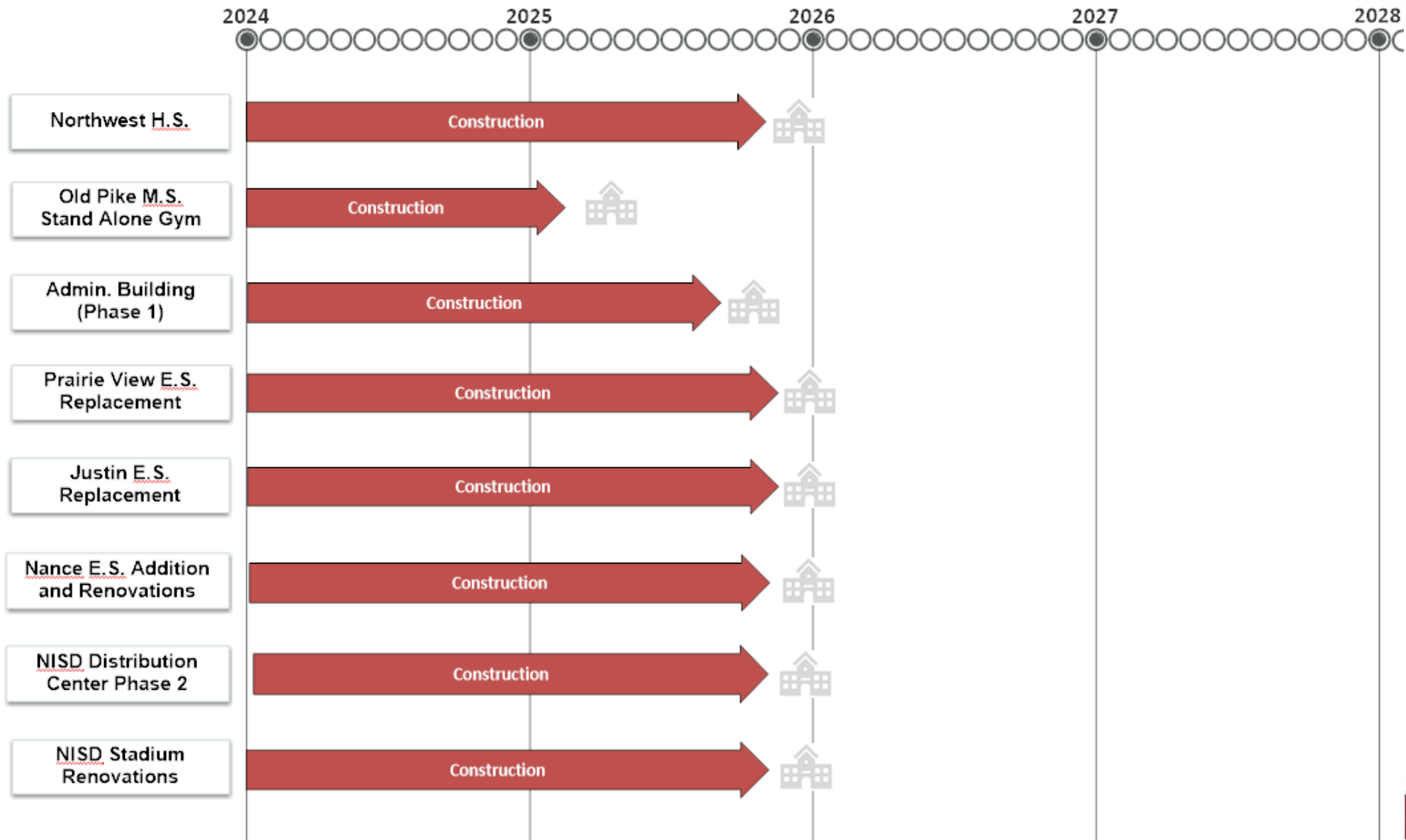
# Facilities, Planning and Construction

## September 23, 2024



# Construction Update:

- Northwest HS – Renovations & Additions – 75% Complete
- Old Pike MS Stand Alone Gym – 65% Complete
- New NISD Administration Building – 35% Complete
- Prairie View Replacement Elementary School – 25% Complete
- Justin Replacement Elementary School – 20% Complete
- Nance ES – Additions and Renovations – 13% Complete
- NISD Distribution Center – Phase 2 Renovations – 33% Complete
- NISD Stadium Renovations (no photos – paused until after football season)
  - 27% Complete





# Northwest HS – Renovations & Additions



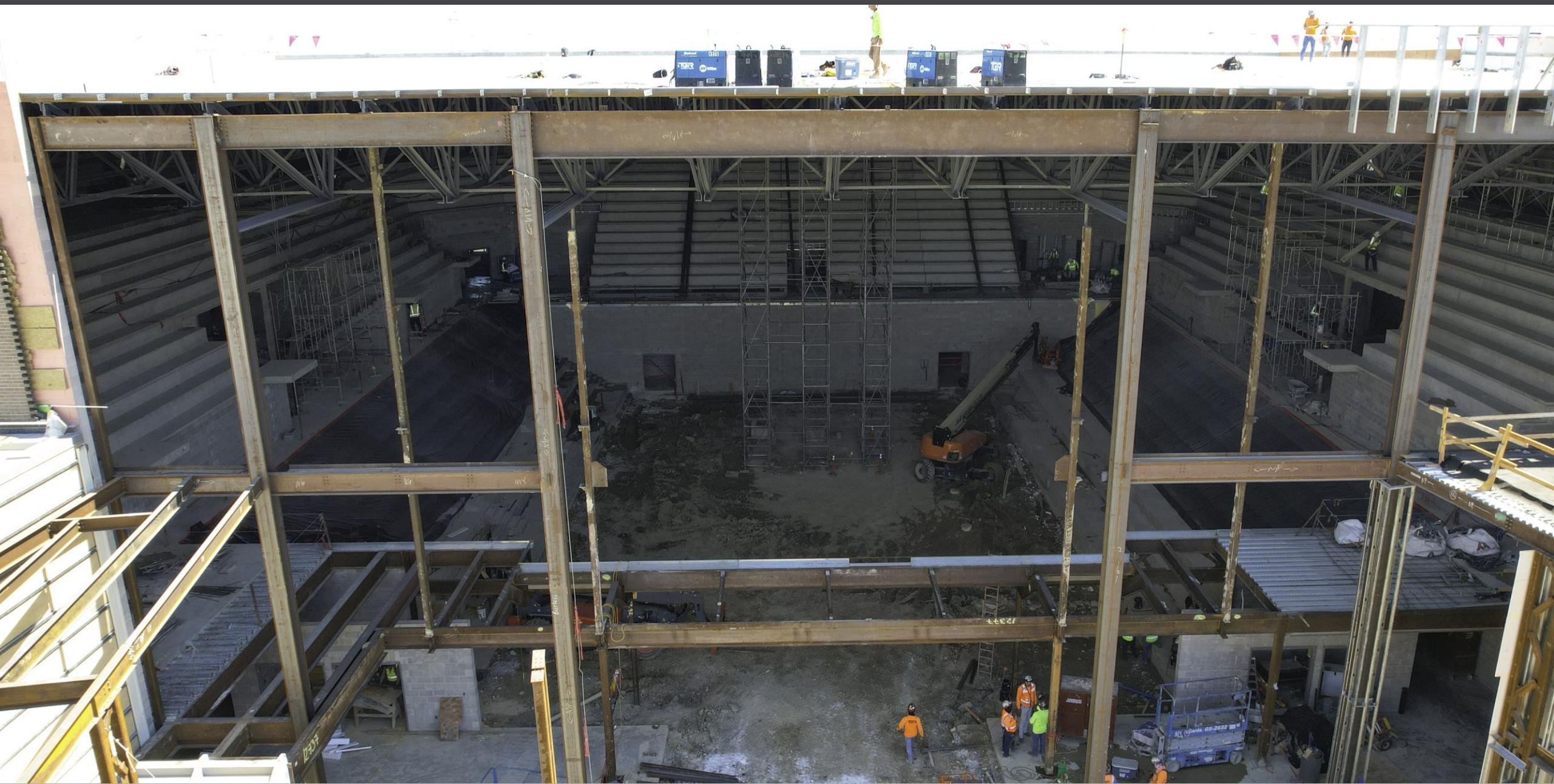
00/10/2024













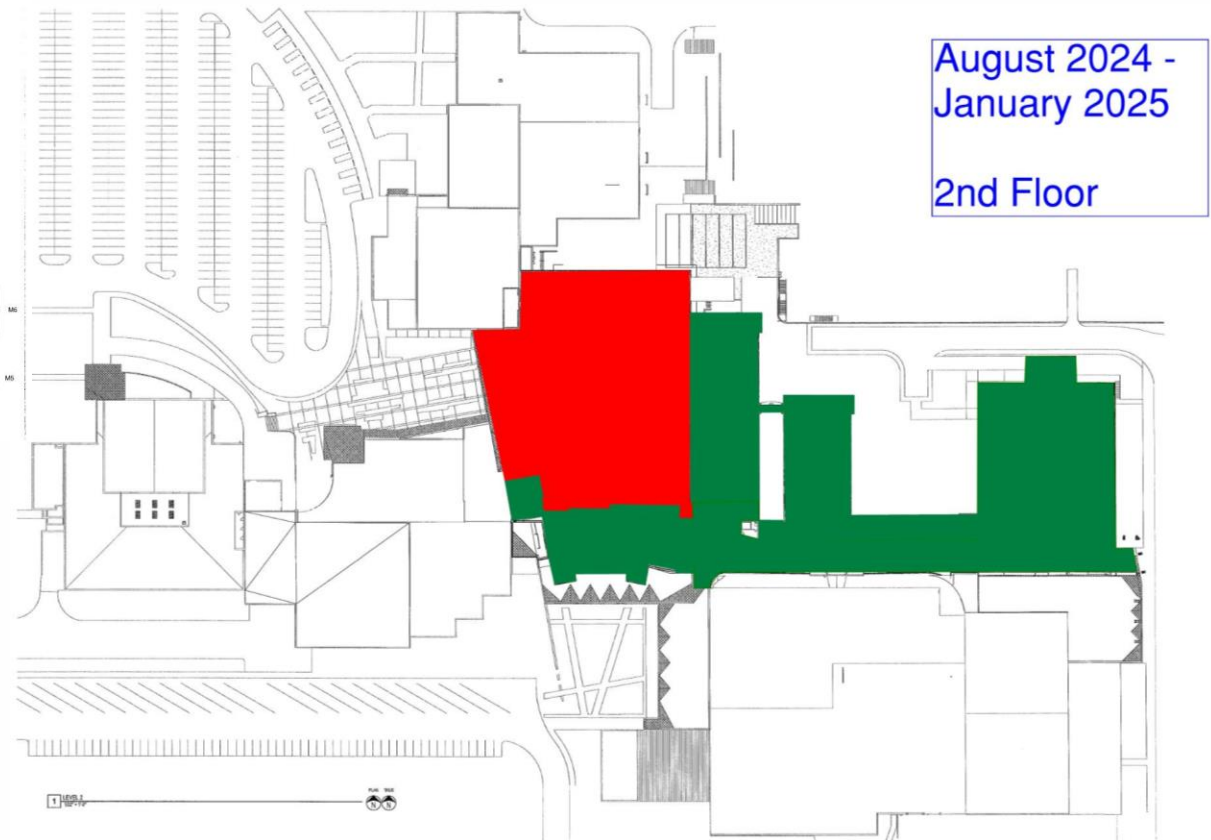
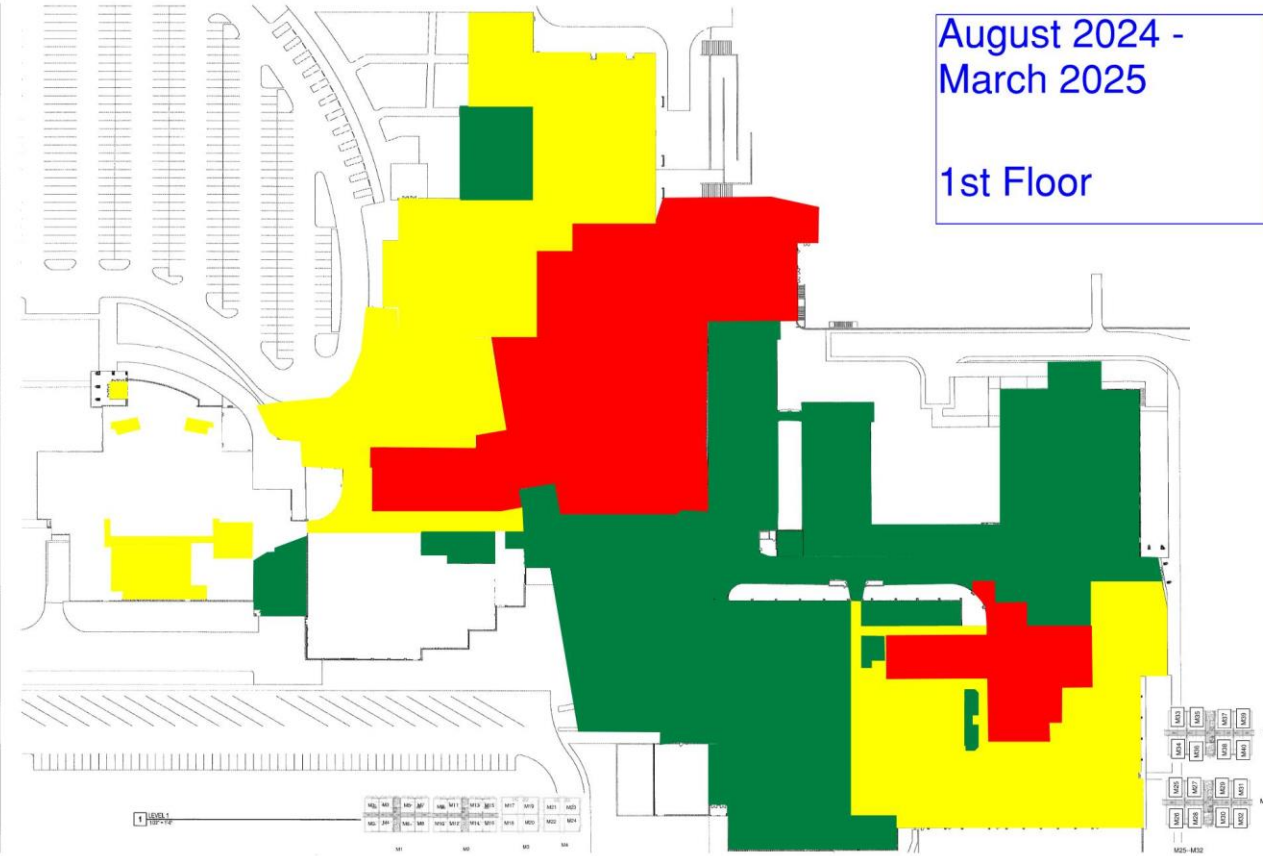




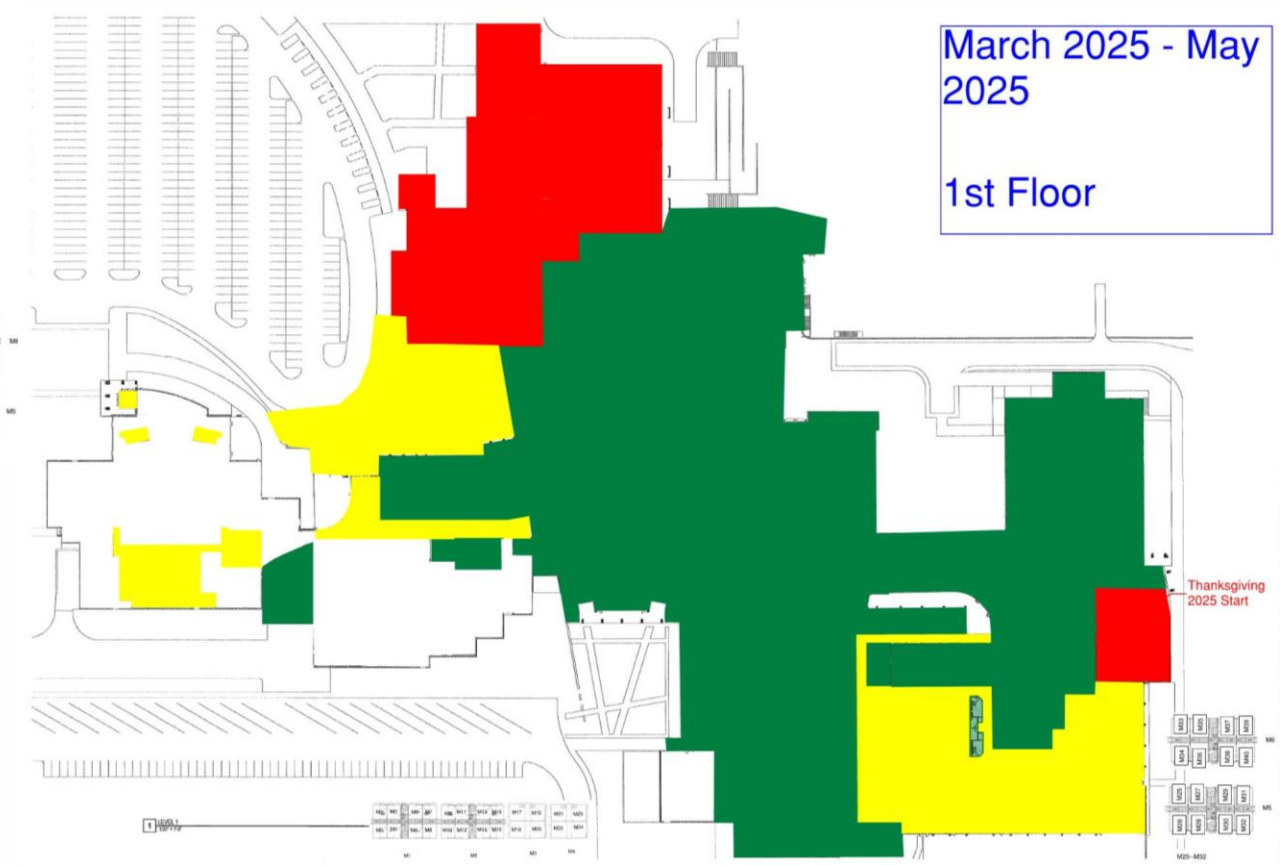
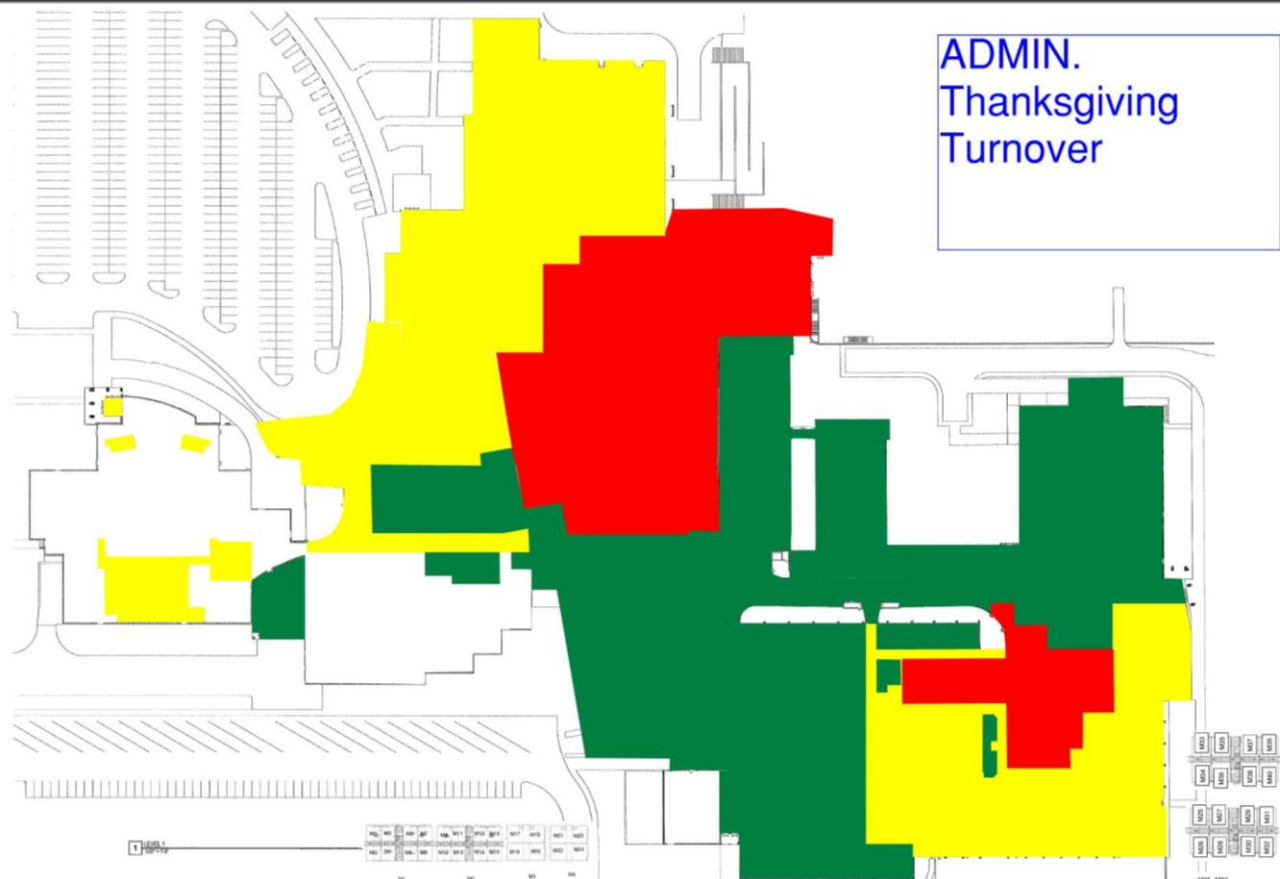












# Old Pike MS Stand Alone Gym





# New NISD Administration Building

















# Prairie View Replacement ES









# Justin Replacement ES









# Nance ES Additions & Renovations













# NISD Distribution Center – Phase 2 Renovations









An aerial photograph of a large-scale construction project for a school building. The building is a complex of several interconnected rectangular structures with flat roofs. Some sections are already finished with dark grey or black exterior walls, while others are still under construction, showing the steel framework and blue roof panels. A large red crane is positioned on the left side of the building. The construction site is surrounded by dirt roads, parking areas filled with cars and trucks, and various construction materials like pipes and lumber. In the background, there are other school buildings, a baseball field, and a residential neighborhood under a clear blue sky.

**Questions?**

**[www.nisdtxconstruction.org](http://www.nisdtxconstruction.org)**