

Boerne ISD Bond 2013

Schematic Design Review Additions & Renovations to

Boerne Middle School North

Boerne Middle School South

Boerne ISD Transportation Center

September 12, 2013

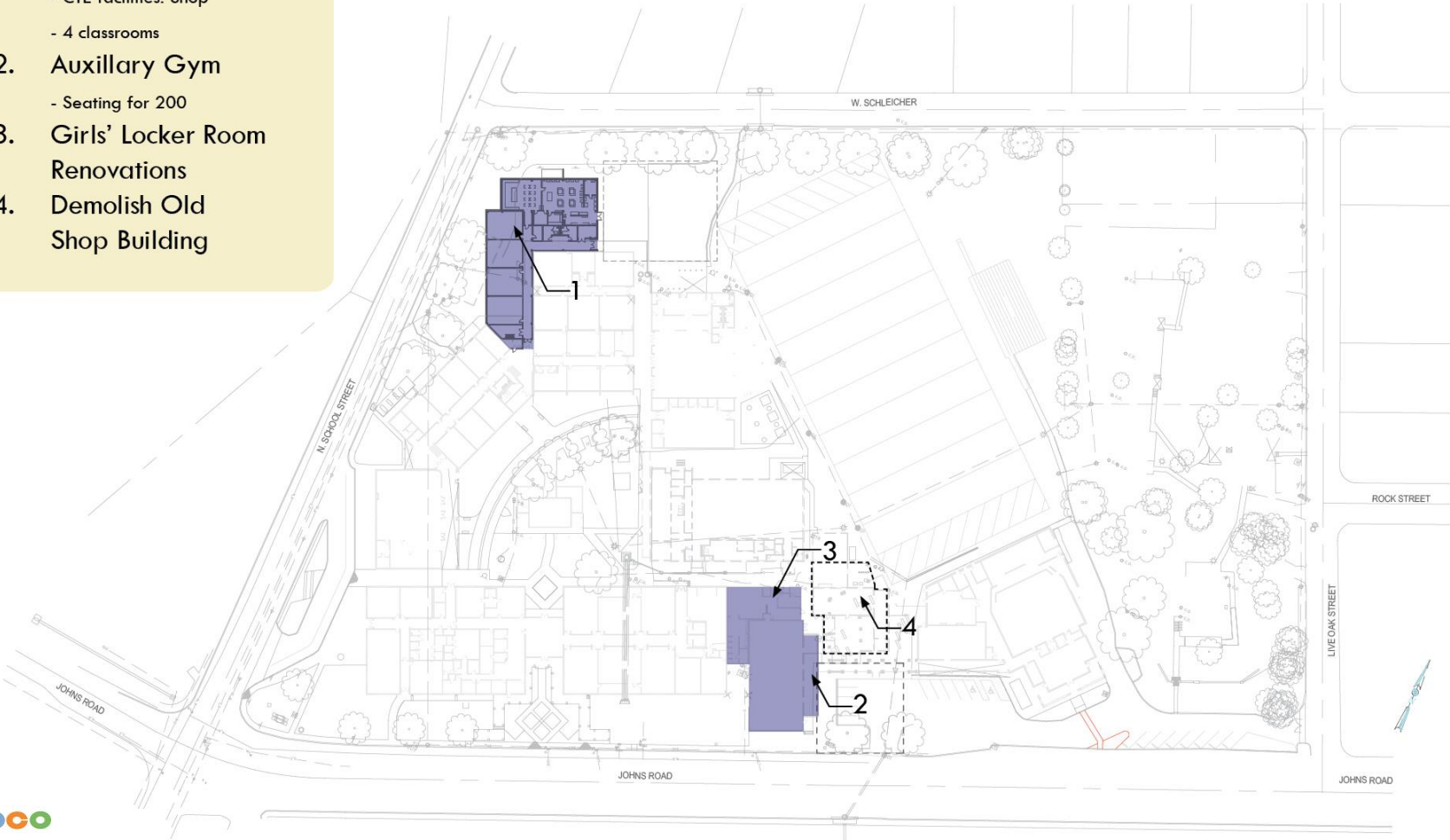


Middle School North - Phase I

Construction Budget: \$11,100,000

Construction: January 2014 - August 2014

- 1. New Construction:
Building "K"
- CTE facilities: Shop
- 4 classrooms
- 2. Auxillary Gym
- Seating for 200
- 3. Girls' Locker Room
Renovations
- 4. Demolish Old
Shop Building



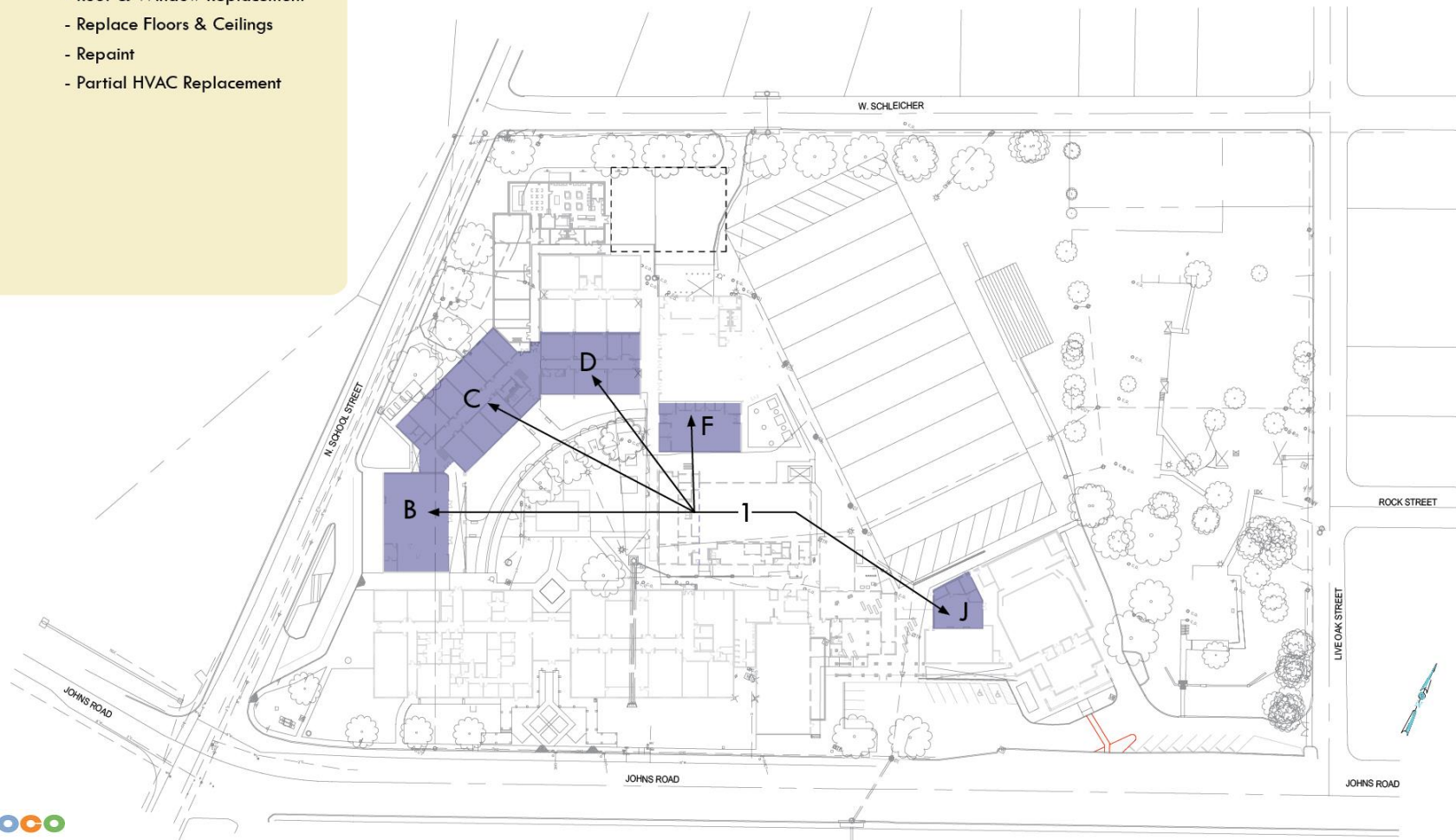
Middle School North - Phase II

Construction Budget: \$11,100,000

Construction: Summer 2014 & Summer 2015

1. Campus Renovations

- Buildings B, C, D, F, & J
- Roof & Window Replacement
- Replace Floors & Ceilings
- Repaint
- Partial HVAC Replacement

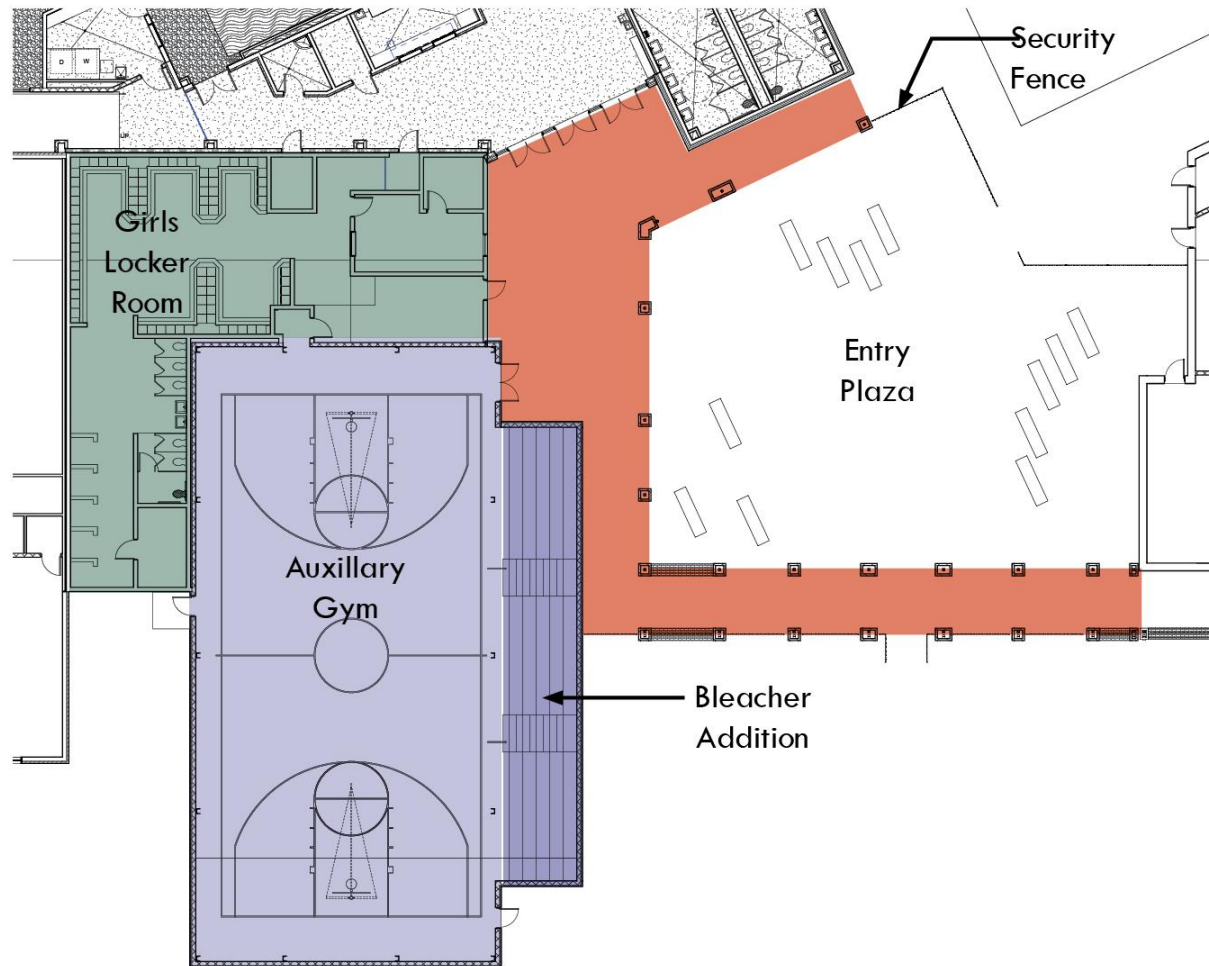


Middle School North - Auxiliary Gym

Construction Budget: \$11,100,000

Phase II Construction: Summers 2014 and 2015

1. Girls Locker Room Renovations
 - Renovate & Add Lockers
 - Renovate Toilet Rooms
2. Auxiliary Gym
 - Add 200 Seat Bleachers
 - Relocate Benches & Scoreboard
 - New Door to Athletic Field



Middle School North - Phase III

Construction Budget: \$11,100,000

Phase III Construction: August 2014 - July 2015

1. New Competition Gym

- Demolish Existing Competition Gym
- New Entry Plaza

2. Field Improvements

- Shift Sports Field 5'
- Bleacher Replacement

3. Site Utility Work

- Improve Drainage

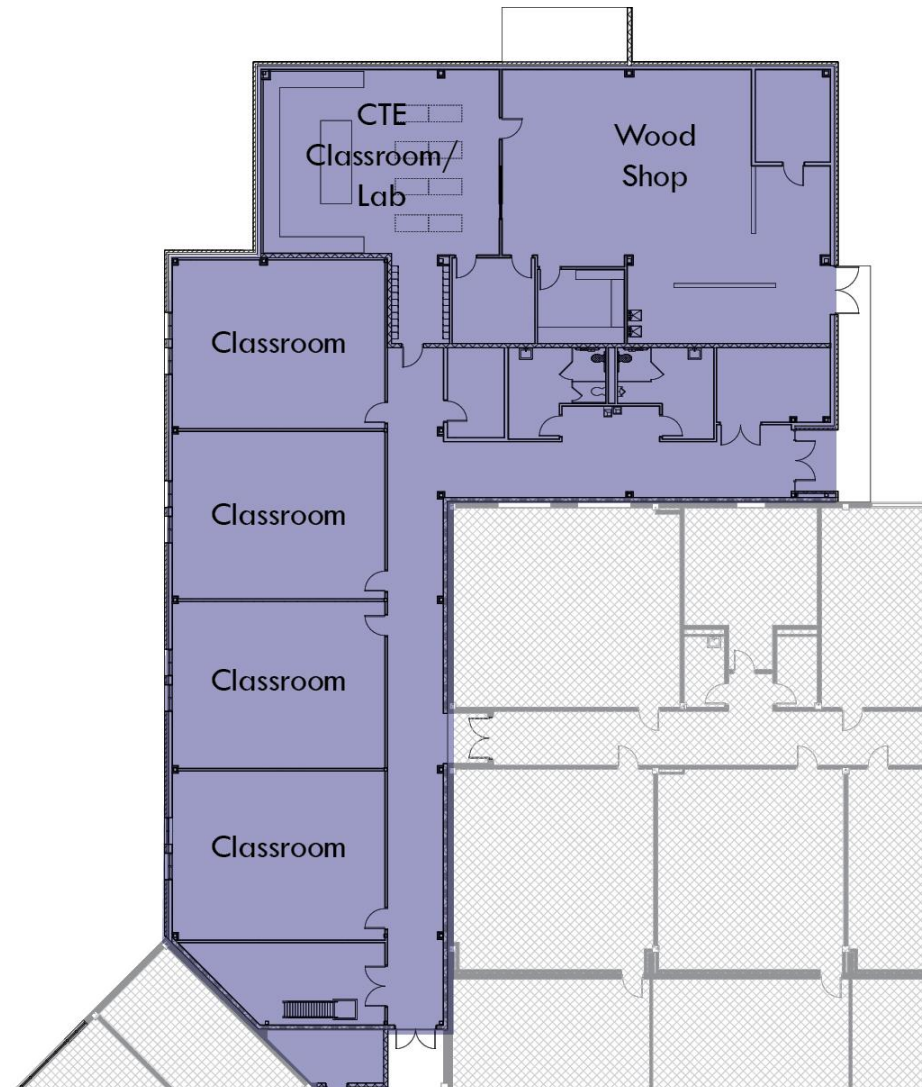


Middle School North - Building “K”

Construction Budget: \$11,100,000

Phase I Construction: January 2014 - August 2014

1. New Wood Shop
2. CTE Classroom/Lab
3. 4 Classrooms



Middle School North - Building “K”

Construction Budget: \$11,100,000

Phase I Construction: January 2013 - August 2014



Middle School North - Building “K”

Construction Budget: \$11,100,000

Phase I Construction: January 2014 - August 2014



Middle School North - Building “K”

Construction Budget: \$11,100,000

Phase I Construction: January 2014 - August 2014



Middle School North - Competition Gym

Construction Budget: \$11,100,000

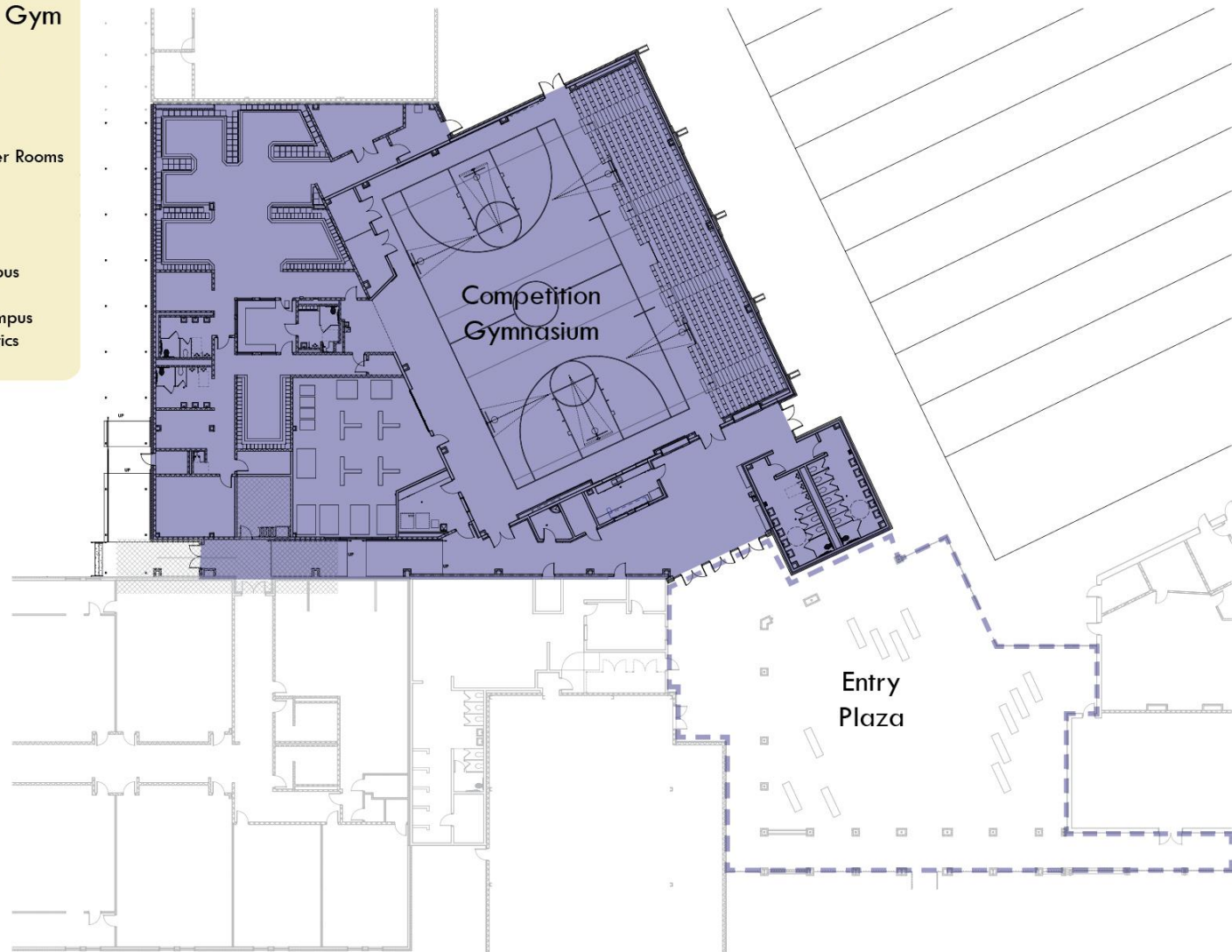
Phase III Construction: August 2014 - July 2015

1. New Competition Gym

- Competition Gymnasium
seats 500 spectators
- Weight Room
- Athletics Offices
- Boys Athletics & PE Locker Rooms

2. Entry Plaza

- Links Auditorium to Campus
via covered walks
- Secures perimeter of campus
- Entry sequence for athletics



Middle School North - Competition Gym

Construction Budget: \$11,100,000

Phase III Construction: August 2014 - July 2015



Middle School North - Competition Gym

Construction Budget: \$11,100,000

Phase III Construction: August 2014 - July 2015



Middle School North - Competition Gym

Construction Budget: \$11,100,000

Phase III Construction: August 2014 - July 2015



Middle School North - Competition Gym

Construction Budget: \$11,100,000

Phase III Construction: August 2014 - July 2015



Middle School North - Competition Gym

Construction Budget: \$11,100,000

Phase III Construction: August 2014 - July 2015



Middle School North - Competition Gym

Construction Budget: \$11,100,000

Phase III Construction: August 2014 - July 2015

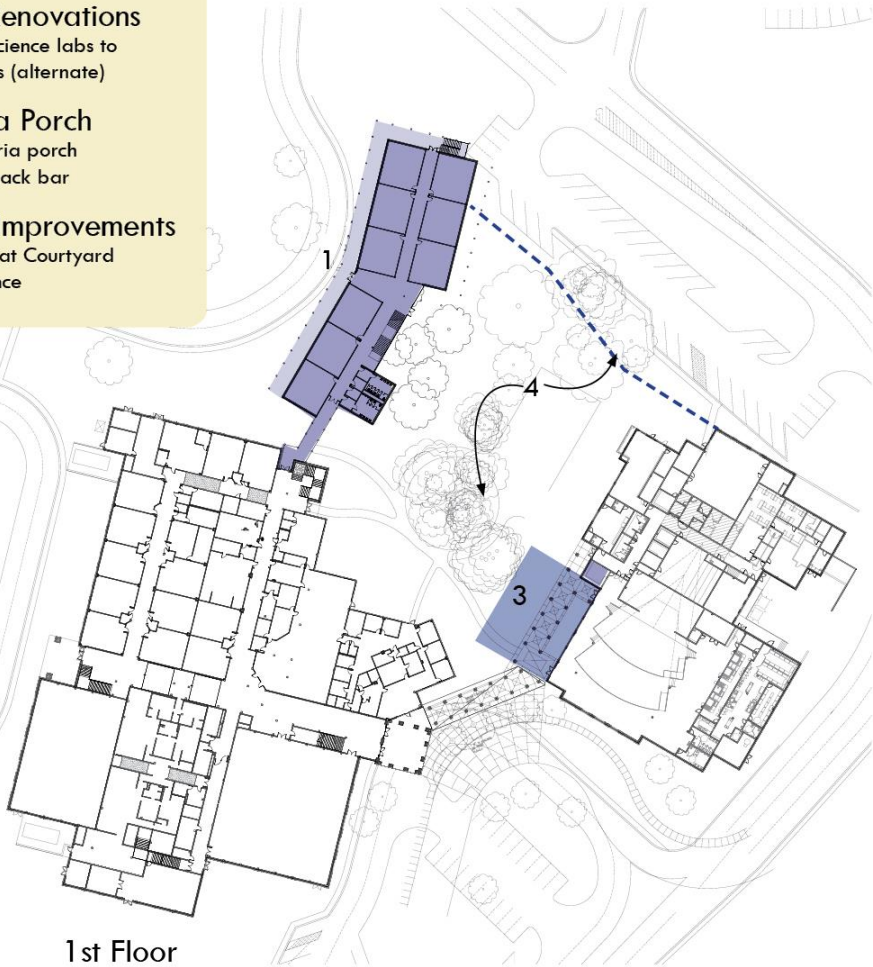


Middle School South

Construction Budget \$8,165,324

Construction April 2014 - July 2015

- 1. New Building
 - 9 Classrooms
 - 9 Science Labs
- 2. Interior Renovations
 - Convert 4 science labs to 6 classrooms (alternate)
- 3. Cafeteria Porch
 - Add cafeteria porch
 - Renovate snack bar
- 4. Exterior Improvements
 - Hardscape at Courtyard
 - Security Fence



1st Floor



2nd Floor

Middle School South

Construction Budget \$8,165,324

Construction April 2014 - July 2015

- 1. Classroom
- 2. Science Classroom
- 3. Prep Room
- 4. Toilet Rooms



1st Floor



2nd Floor

Middle School South

Construction Budget \$8,165,324

Construction April 2014 - July 2015



Middle School South

Construction Budget \$8,165,324

Construction April 2014 - July 2015



Middle School South

Construction Budget \$8,165,324

Construction April 2014 - July 2015

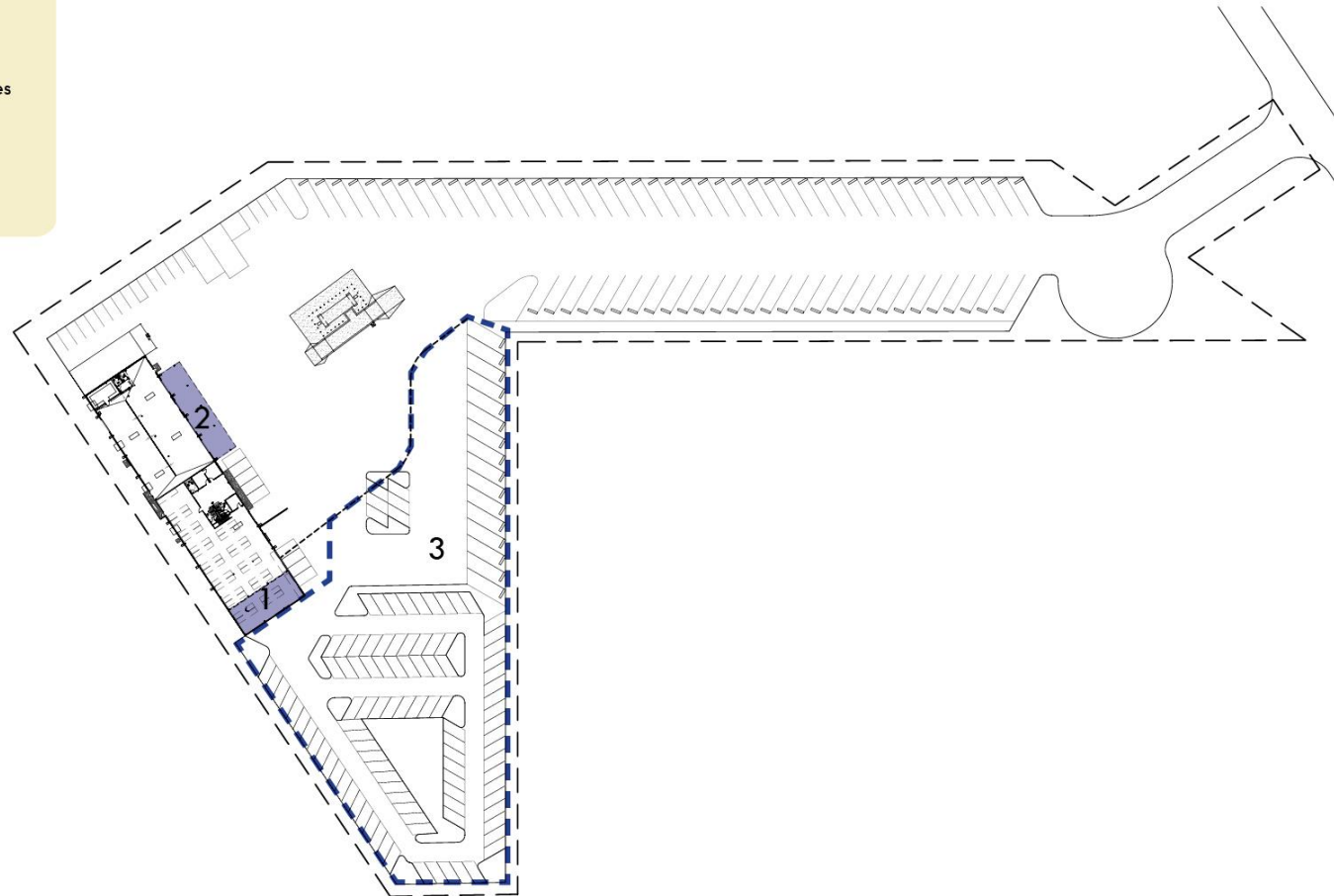


District Transportation & Warehouse Facility

Construction Budget \$872,000

Construction: January 2014 - July 2014

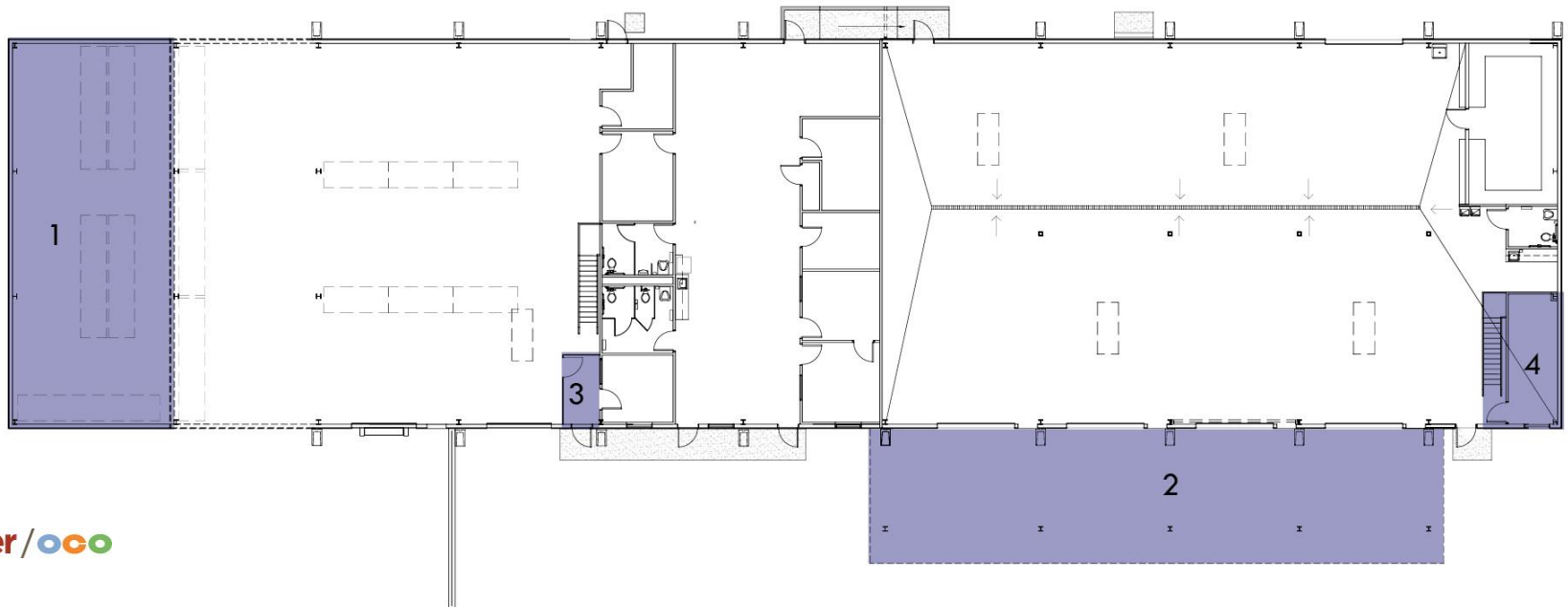
1. Warehouse Expansion
2. Bus Work Porch
3. Additional Parking
 - 16 Additional Bus Spaces
 - 29 Additional Parking Spaces



District Transportation & Warehouse Facility

December 2013 - August 2014

1. Warehouse Expansion
2. Bus Work Porch
3. Secure Vestibule
4. Office Enclosure/
Mezzanine Storage



District Transportation & Warehouse Facility

December 2013 - August 2014

