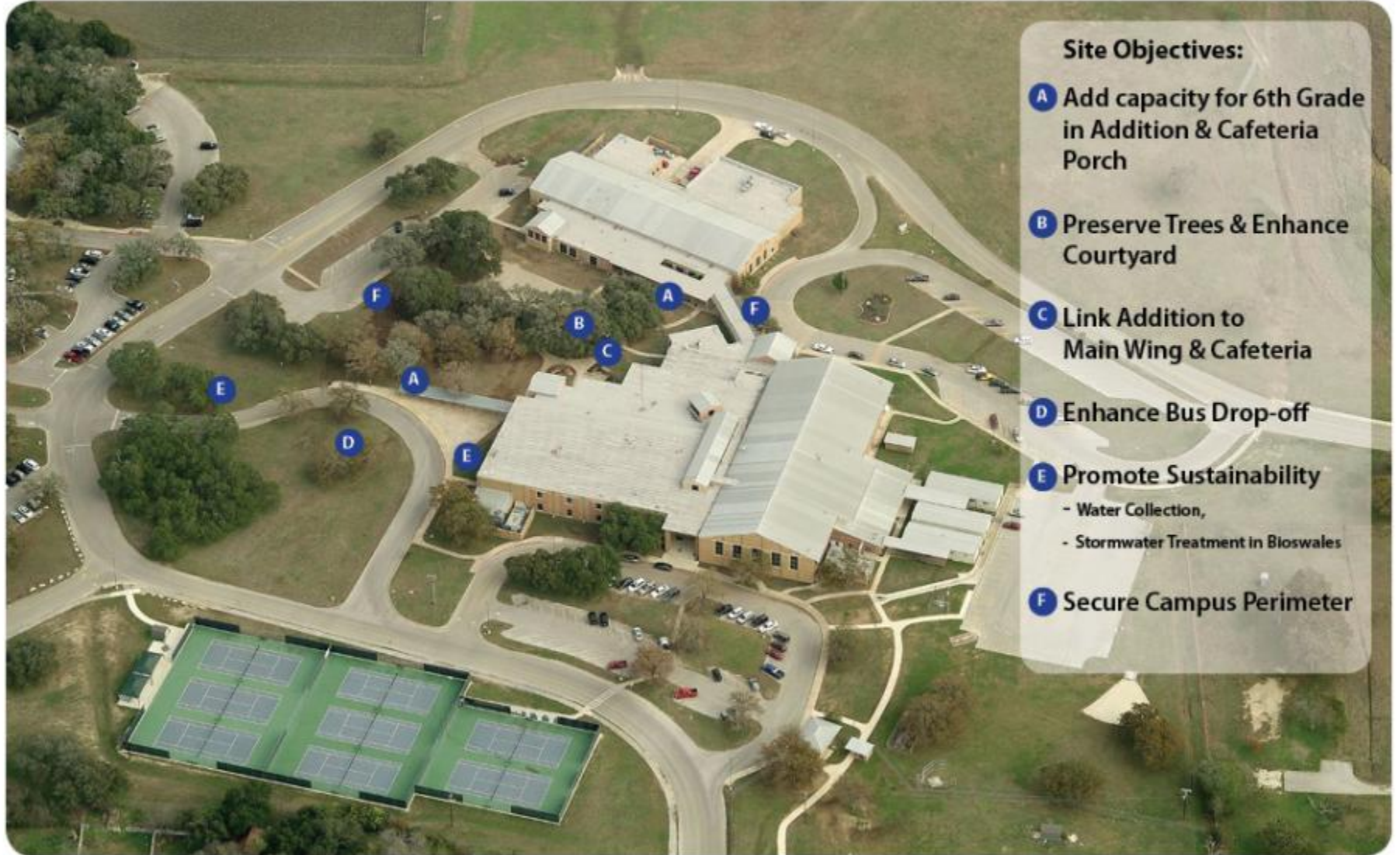


# Middle School South

Construction April 2014 - July 2015

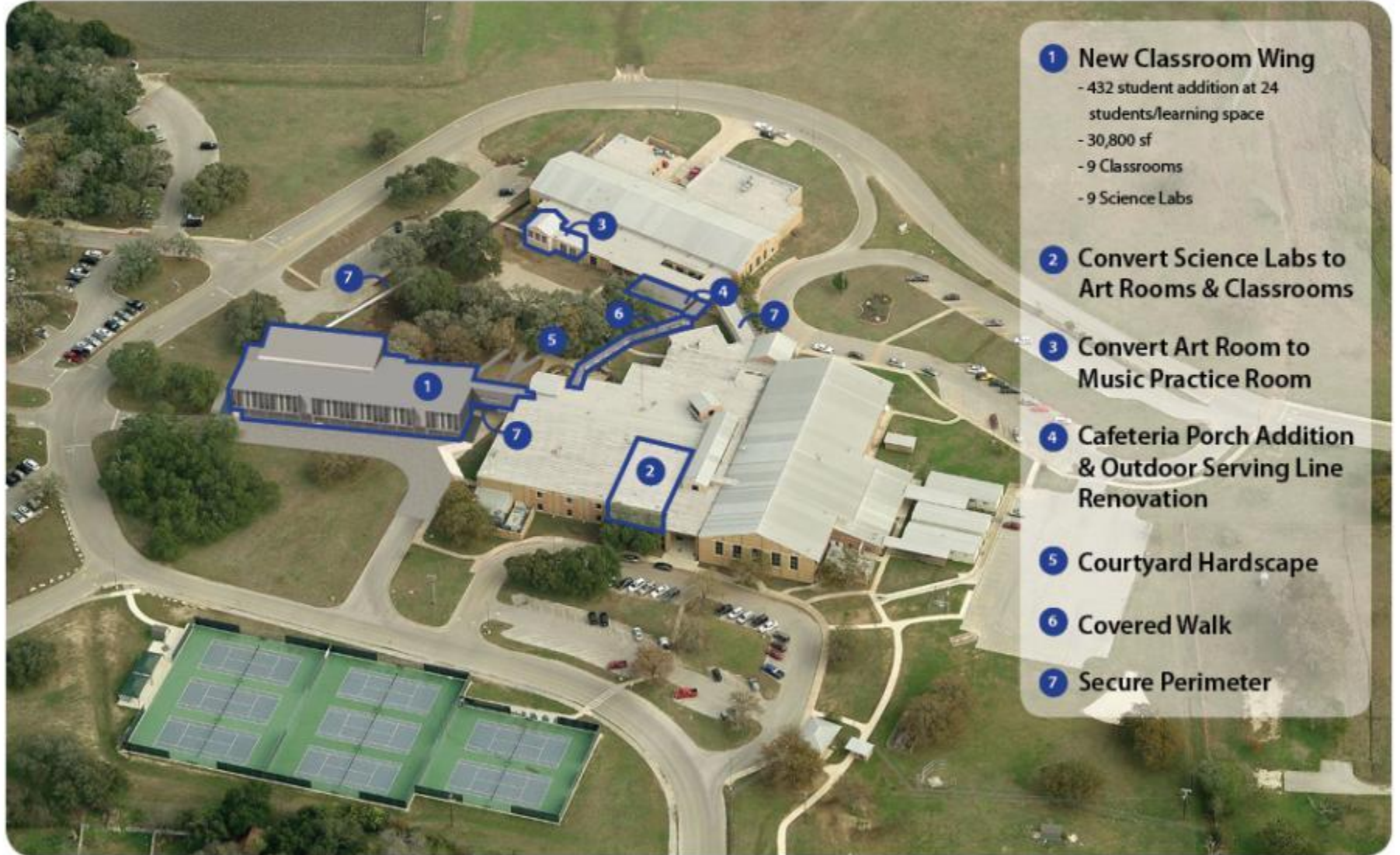


## Site Objectives:

- A** Add capacity for 6th Grade in Addition & Cafeteria Porch
- B** Preserve Trees & Enhance Courtyard
- C** Link Addition to Main Wing & Cafeteria
- D** Enhance Bus Drop-off
- E** Promote Sustainability
  - Water Collection,
  - Stormwater Treatment in Bioswales
- F** Secure Campus Perimeter

# Middle School South

Construction April 2014 - July 2015



- 1 New Classroom Wing**
  - 432 student addition at 24 students/learning space
  - 30,800 sf
  - 9 Classrooms
  - 9 Science Labs
- 2 Convert Science Labs to Art Rooms & Classrooms**
- 3 Convert Art Room to Music Practice Room**
- 4 Cafeteria Porch Addition & Outdoor Serving Line Renovation**
- 5 Courtyard Hardscape**
- 6 Covered Walk**
- 7 Secure Perimeter**

# Middle School South

Construction April 2014 - July 2015

- 1 New Classroom Wing**
  - 432 student addition at 24 students/learning space
  - 30,800 sf
  - 9 Classrooms
  - 9 Science Labs
- 2 Convert Science Labs to Art Rooms & Classrooms**
- 3 Convert Art Room to Music Practice Room**
- 4 Cafeteria Porch Addition & Outdoor Serving Line Renovation**
- 5 Courtyard Hardscape**
- 6 Covered Walk**
- 7 Secure Perimeter**



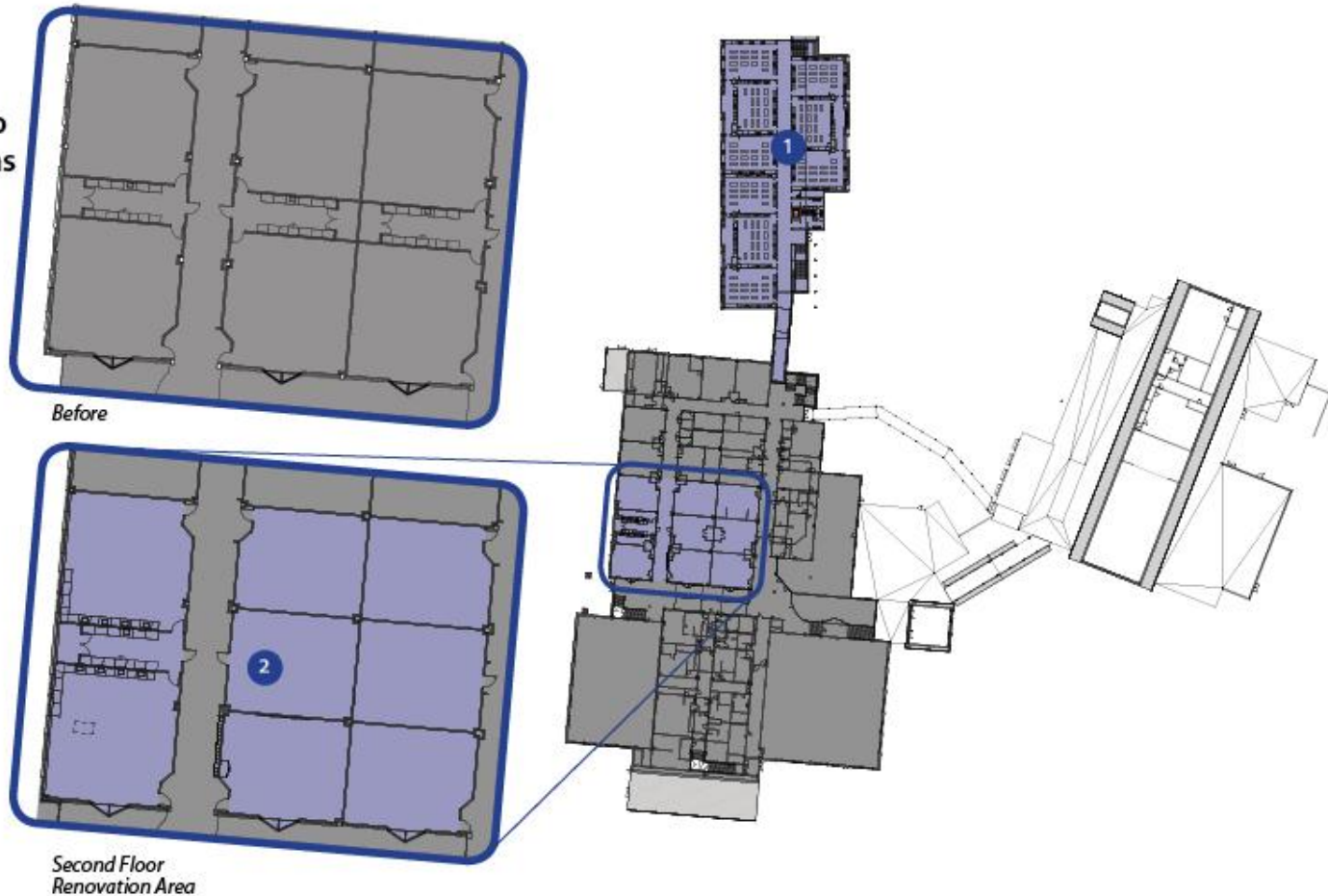
# Middle School South

Construction April 2014 - July 2015

## 1 New Classroom Wing

- 432 student addition at 24 students/learning space
- 30,800 sf
- 9 Classrooms
- 9 Science Labs

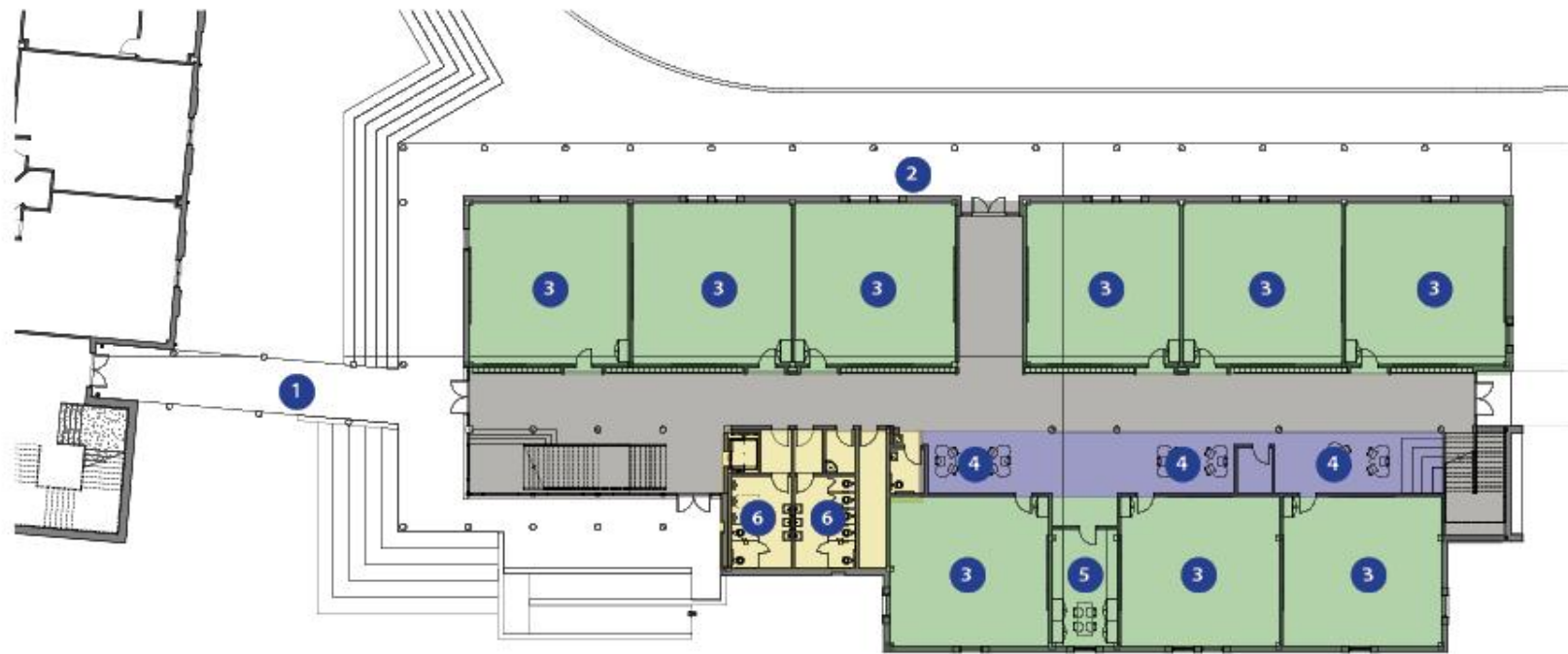
## 2 Convert Science Labs to Art Rooms & Classrooms



# Middle School South

Construction April 2014 - July 2015

- 1 Covered Link to B Wing
- 2 Covered Bus Drop-off
- 3 Classroom
- 4 Collaborative Learning Space
- 5 Teachers Work Room
- 6 Restrooms



*First Floor Plan*

# Middle School South

Construction April 2014 - July 2015

- ① Enclosed Link to B Wing
- ② Science Classroom
- ③ Science Prep Room
- ④ Restrooms



*Second Floor Plan*

# Middle School South

Construction April 2014 - July 2015

The following exterior renderings were developed for your review. They illustrate two different exterior finish schemes that are under consideration. The basic exterior wall system on the first floor is always split face masonry to blend with the existing campus. The Second floor is shown with two different exterior finishes, 1) metal wall panels and 2) split face CMU.

As designers, our thinking is that this building is different in several ways from the original design that was constructed over almost 15 years ago.

The metal wall panel scheme highlights the function of the second floor as “science labs” by being a totally different material, in this case metal wall panels. We have found metal wall panels to be a cost effective, low maintenance and effective in providing the building a more up to date “look”.

The split face CMU scheme is probably a little more expensive, but it maintains more of the character of the existing campus. We believe both schemes present an attractive solution while being simple and cost effective to construct.

# Middle School South

Construction April 2014 - July 2015



metal wall panel scheme



split face CMU scheme



# Middle School South

Construction April 2014 - July 2015



# Middle School South

Construction April 2014 - July 2015



metal wall panel scheme



split face CMU scheme

# Middle School South

Construction April 2014 - July 2015



*Views of Cafeteria Porch Addition*