



# Mercy Aftercare



## Aftercare Hours

Due to the long day, we suggest students are picked up by 5:30

- Regular school day: 3:00– 6:00 pm
- Half day: 12:15–6:00 pm
- There will be no aftercare provided on days the school is closed.
- There will be no aftercare provided on days the school is closed early due to inclement weather.
- There will be no aftercare provided on some half-days (such as a half-day prior to the start of a holiday break). These dates will be announced at the beginning of the school year and will be published in Mercy Matters.



## Aftercare Rates

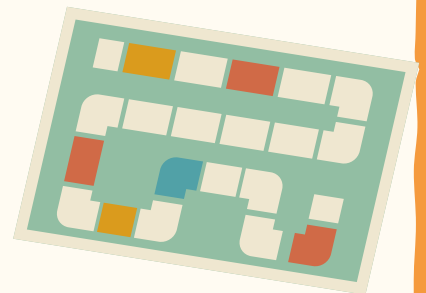
- One-time registration fee per family: \$35
- Registered Students: \$12 per hour, per child (Flat rate during first hour; charged in 30-minute increments after the first hour).
- Unregistered Students: \$20 per hour, per child (Flat rate during first hour; charged in 30-minute increments after the first hour) \*Rate will revert to \$12 per hour, per child if the family registers.
- Late pickup fee: Children picked up after 6:00 pm will be charged a late fee of \$5 per child per minute past the 6:00 hour.

## Student Conduct

Students attending aftercare are expected to adhere to Our Lady of Mercy School's Code of Conduct.

## Lunch and Snacks

- Lunch is needed on half days.
- A nutritious snack is needed for after school hours.



## Billing and Payment

- Families will be invoiced at the end of each month.
- Payment shall be made within two weeks of receiving the initial invoice. If payment is not made within that timeframe, the student will not be allowed to attend aftercare until the payment is made.
- Invoice will be emailed/paid via PayPal.



**[CLICK HERE TO REGISTER](#)**