



NEWSLETTER

Homecoming Festivities - A Week of FUN!

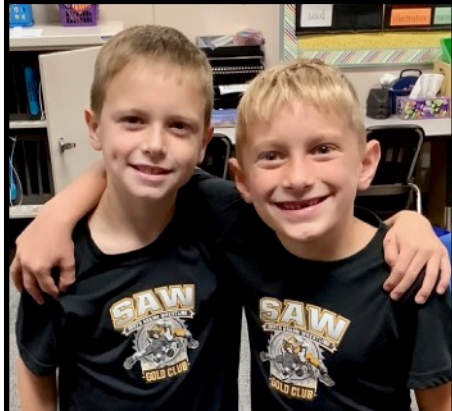
Football Players read to students!



Pajama Day



T
W
I
N
S



W
E
S
T
E
R
N

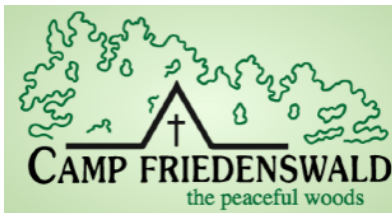
Elementary Hat Day on Wednesday, September 25

Elementary students have reached level 2 for good behavior and will be rewarded with a hat day on Wednesday, September 25.



5th Graders Will Enjoy a 3-Day Field Trip to Camp Friedenswald in Cassopolis, Michigan This Week!

September 25-27, 5th graders participate in Aquatic Small World, CSI, Nature Journaling, a Survival Game, Archery, Fire Building, Pioneer Skills, Team Building, Canoeing, Nature Hiking, Recreation Time, and a Treasure Hunt. They will also enjoy a Dutch Auction and stories/songs around a Popcorn Campfire. The students will be well chaperoned, sleep in beautiful cabins and enjoy yummy food. The Camp Friedenswald field trip is a school event the students will always remember fondly.



Thank you Nora Gray
 Nora Gray Boutique in Berne held a school supply drive and donated the items to the school. We have added these supplies to our school supply closet to use for students needing supplies.

Calendar



Monday, September 23

Stevens Puppets will present *Beauty & the Beast* to K-2 at 8:15 a.m. and to 3-5 at 9:30 a.m. in the auditorium.
 MS Volleyball vs. Wyneken Memorial Lutheran (home) - 5:30 p.m.

Tuesday, September 24

3rd & 4th graders go to the Embassy Theatre (lv. at 8:40/ret. at 12:15)
 MS Volleyball at Jay County-5:30 p.m.
 MS Football at Jay County - 5:30 p.m.

September 25-27

5th Grade to Camp Friedenswald

Thursday, September 26

Music Fundraiser Begins
 MS Volleyball vs. St. Joe (home)-5 p.m.

Friday, September 27

All unsold STAR cards and money raised in the MS Fundraiser should be turned in.
 MS Volleyball vs. St. Joe (home) 5 pm

Saturday, September 28

MS Cross Country at New Haven-9 a.m.

Monday, September 30

MS Volleyball at Parkway - 5 p.m.

Wednesday, October 2

AM and PM Preschool to Steele Farms

Wednesday, October 9

End of 1st Quarter

Friday, October 11

1st grade field trip to Lincoln Ridge Farms (lv. at 8:15/ret. at 2 p.m.)

Tuesday, October 15

School Picture retakes

Thursday, October 17

School Smiles Dentist will be at SA Parent/Teacher Conferences from 3-6 p.m.
 MS/HS Fall Choir Concert at 7 p.m.

Monday, October 21

3rd Grade Community field trip

Star Cards

Middle School students are selling the popular STAR cards for \$15 (note the price increase)! The cards have discounts at many local businesses and can be used repeatedly for an entire year. The money raised will be used for student activities and field trips.

<p>The White Cottage Sweet Shoppe 10% OFF All Non-Sale Items</p>	<p>The Edelweiss 10% OFF fresh flowers. *Cash and carry only. Berne - 589-2125</p>	<p>LUCKY CHINA 10% OFF \$20 purchase Berne 589-3531</p>
<p>Habegger's ACE Lumber and Building Supply 10% OFF any Ace Royal, C+K Benjamin Moore or Porter PPG paints (not valid with any other discounts or specials) 1184 US 27 North, Berne</p>	<p>East of Chicago 10% off purchase. Berne - 589-8891</p>	<p>Spare Time Lanes Bowling 1 Game get 2nd Game for \$1 Limit 1 per day per card 589-2927</p>
<p>Free breadsticks with 14" or 16" pizza only. Berne - 589-3515</p>	<p>The Timberlost Diner FREE drink with any meal purchase 404 E Line St. Geneva</p>	<p>10% off carry out only. Geneva - 368-9878</p>
<p>AMY'S PROFESSIONAL HAIR 10% OFF retail items w/ card 1027 US 27 S Berne 589-8327</p>	<p>Pizza Hut 10% OFF & Carry-Out only. Not valid w/ any other offers Berne</p>	<p>richard's jewelry 20% OFF Regular Price In-Stock Earrings not valid with any other sales 109 W. Main Berne 589-3313</p>
<p>Little Container Company 10% OFF Dumpster Rental 280-273-7692</p>	<p>SUBWAY Berne \$1 OFF any 12" or 50¢ OFF any 6" sub or salad Not valid on \$6 foot long or other specials</p>	<p>25¢ Fountain Drink with Fuel Fill Up 8 gal min - 1 drink per visit 726 US 27 N, Berne 589-4030</p>

All money raised and unsold STAR cards must be turned in by September 27.

Prizes (Per Grade Level)

Top sellers - \$30

2nd place - \$20

3rd place - \$10

Boys Basketball Open Gyms for Middle School Boys

Sept. 24 @ 4:30 in MS

Sept. 25 @ 5 in Elem.

Oct. 1 @ 4:30 in MS

Oct. 2 @ 5 in Elem.

Oct. 8 @ 5 in Elem.

Oct. 10 @ 4:30 in Elem.

Oct. 15 @ 4:30 in Elem.

Oct. 16 @ 4:30 in Elem.



LIFEWISE ACADEMY

★ ★ ★

SOUTH ADAMS

Grades K-5

LEARN MORE | ENROLL MY STUDENT | VOLUNTEER | DONATE

lifewise.org/southadamsin

[@lifewisesouthadamsin](https://www.facebook.com/lifewisesouthadamsin)



SOUTH ADAMS SCHOOLS CONTINUES THE IMPLEMENTATION PROCESS OF BUS ROUTING AND RIDERSHIP PROGRAMS

Dear Parents,

The SMART-tag™ system helps increase safety and security for students riding on a school bus, leveraging technology to improve student management and communications on school buses.

SMART-tag™ monitors the location of each tablet-equipped school bus, including student loading and unloading, providing real-time information to the Transportation Department, and you, the parent.

SMART-tag™ will help...

- increase driver, school, and parent awareness
- ensure riders will load on the right bus and unload at the right stop
- maximize rider safety and security
- enable drivers to efficiently and effectively carry out their duties
- ensure Special Education students are released to authorized guardians.

SMART-tag™ Parent APP (coming later this fall)

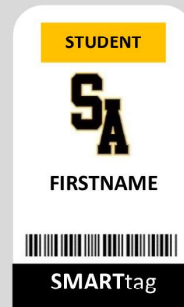
• SMART Alerts - sign up for SMART Alerts and receive text messages when your child is approximately 10-15 minutes from their stop.

- SMART Locate - allows parents to view a map showing the bus as their child is being transported.
- Authorized guardian release feature. This tool allows parents to update authorized guardians through the Parent Portal. This feature may be disabled by your district. If it is unavailable to you, please contact your district to make guardian edits.
- An online Parent Portal may be accessed on your iOS or Android smartphone. You

For more information about SMART tag™, please visit <http://www.smart-tag.net>.

HOW IT WORKS

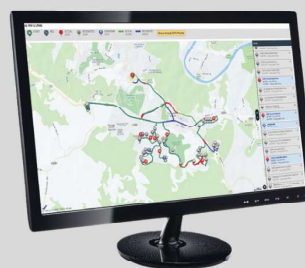
Bus Pass (Student SMART-tag™ ID)



Students are issued passive, Radio Frequency Identification (RFID) cards which *DO NOT* store student data or emit any tracking information. RFID technology is used in many industries such as medical (patient, equipment & supplies tracking) libraries, and even amusement parks. *These IDs are read ONLY when the student gets on or off the bus by an RFID reader.* On campus, these cards may also be used in the cafeteria and library via their printed bar codes.

Bus Tablet

SMART-tag™ school buses are now equipped with a tablet computer and RFID reader. When riders get on or off, they present their ID onto the reader and the tablet displays if the rider is boarding the correct bus or getting off at their correct stop. The tablet uses its GPS information to report its location and speed, ridership activity and other safety-related information.



Transportation Administration

While buses are in service, their location and ridership info are available for the transportation department, so they can oversee all school bus activity.

FOR MORE INFORMATION

www.southadams.k12.in.us/departments/transportation

QUESTIONS? CONTACT
transportation@southadams.k12.in.us

Breakfast with SANTA CLAUS


COOKIE DECORATING & DONATION BREAKFAST

Bring the whole family for a special Meet and Greet event, where kids can decorate Christmas cookies, meet Santa, and enjoy a pancake & sausage breakfast!

-  **Saturday, November 16, 2024**
7-10 am or until supplies run out
-  **Geneva Volunteer Fire Department**
200 E. Line Street, Geneva, IN 46740
-  All Proceeds Support
The Geneva Volunteer Fire Department Ladies' Auxiliary



MS/HS Yearbooks
24/25 MS/HS yearbooks can be purchased online at <http://jostens.com/ybksm>. For the **3rd year in a row, the middle school students will be included in the HS yearbook.**
The 23/24 MS/HS yearbooks have not arrived yet but should arrive soon.



School Smiles Dental Care

Thursday, October 17th



The dentist is coming to our school on October 17th! You can register your child for this service online at <https://schoolsmiles.com/student-signup/>. The dental team will set up inside our school during school hours to see students for dental cleanings. They accept Medicaid, private insurance, and offer self-pay rates. School Smiles requires a new registration form be filled out each school year. If you are interested in this awesome service, please complete the form and turn it in to your child's teacher or the office ASAP. Please call the nurse's office with any questions.

OCTOBER | 2024

South Adams School Corporation



MONDAY

TUESDAY

WEDNESDAY

THURSDAY

FRIDAY

30 Cheeseburger w/Ketchup/Mustard
Crispy Tater Tots
Steamed Corn
WG Cookie
Fruit
Milk

7 BBQ Pulled Pork Sandwich
Sweet Potato Fries w/Ketchup
Fresh Veggie Choice w/Ranch
Frozen Fruit Cup
Milk

14 Swiss Steak w/Gravy
Mashed Potatoes
WG Biscuit w/Butter & Jelly
Steamed Corn
Fruit
Milk

21 Breakfast for Lunch
Biscuits & Gravy or French
Toast w/Syrup
Scrambled Eggs
Tater Bites w/Ketchup
Celery w/PB Cup
Fruit
Milk

28 K-5: Hot Dog on Bun
6-12: Chili Cheese Hot Dog
Crispy Tater Tots w/Ketchup
Steamed Corn
WG Cookie
Fruit
Milk

1 Cozy Beef & Noodles
Mashed Potatoes
Steamed Mixed Vegetables
Dinner Roll w/ Butter
Fruit
Milk

8 Chicken Fries
w/Ketchup & BBQ Sauce
Cheesy Potato Casserole
Fresh Veggie Choice w/Ranch
Fresh Fruit
Milk

15 K-5: Deli Sub w/Cheese, Ketchup/Mustard
6-12: Chicken Bacon Ranch vs. Deli Sub w/Cheese, Ketchup/Mustard
Potato Chips
Fresh Vegetables w/Ranch
Fresh Fruit
Milk

22 K-5: Deli Sub w/Cheese, Ketchup/Mustard
6-12: Chicken Bacon Ranch vs. Deli Sub w/Cheese, Ketchup/Mustard
Potato Chips
Fresh Vegetables w/Ranch
Fresh Fruit
Milk

29 Grilled Cheese Sandwich
Starfire Soup Choice
w/WG Crackers
Fresh Vegetables w/Ranch
Fruit
Milk

2 Chicken Patty Sandwich
w/Cheese Slice, Ketchup/Mustard
French Fries
Steamed Peas
Fruit
Milk

9 Square School Pizza
Fresh Veggie Choice w/Ranch
Steamed Peas
Homemade WG Dessert
Fruit
Milk

16 K-5: Chicken Tenders
6-12: General Tso Chicken
Steamed Rice
Asian Vegetable Blend
Fresh Veggie Choice w/Ranch
WG Granola Bar
Fruit
Milk

23 Fall Break
No Student Classes

30 Johnny Marzetti vs. Chicken Alfredo
Garlic Breadstick
Steamed Broccoli
Tossed Salad w/Dressing
WG Home-style Banana Cake
Fruit
Milk

3 K-5: Beef Soft Tacos
6-12: Beef Burrito Bowls
WG Doritos
Refried Beans
Fresh Fruit
Milk

10 Chicken Fajita Salad
(Lettuce, Chicken Fajita Meat, Salsa, Black Beans, Cheese, Tortilla Strips, Ranch/Taco Sauce)
Spanish Rice
Fruit
Milk

17 Fish Filet w/ Tartar sauce vs. PBJ Uncrustable
Au Gratin Potatoes
Steamed Green Beans
Fresh Veggie Choice w/Ranch
Fruit
Milk

24 Fall Break
No Student Classes

31 French Bread Pizza
Steamed Green Beans
Fresh Veggie w/Ranch
Pudding Cup
Fruit
Milk

4 Corn Dog
w/Ketchup/Mustard
Potato Chip Choice
Baked Beans
Fruit
Milk

11 Zesty Pepperoni Spaghetti
WG Breadstick
Crisp Caesar Salad
Steamed Corn
Fruit
Milk

18 Ham & Cheese Squares
WG Crackers
Baked Beans
Fresh Veggie Choice w/Ranch
Fresh Fruit
Milk

25 Fall Break
No Student Classes

1 Sloppy Joe vs. Marinara
Meatball Sub Sandwich
w/Cheese
Steamed Peas
Sweet Potato Fries w/Ketchup
Fresh Fruit
Milk

News

**October 23-25: Fall Break
No student classes!**

Milk Choices offered daily-
White,
Chocolate, and Strawberry.
Students packing their lunch &
wanting to purchase milk must
purchase it for \$0.75 regardless
of
meal benefit status.

All Whole Grain (WG) items served
contain wheat (gluten).

Examples:

Pasta, breaded foods, buns,
Biscuits, breads. Substitutions for
Allergies available with Physician
Documentation.

Menu is subject to change!

Breakfast served for K-12 from
7:20-7:55 a.m. during the school
Year unless school is delayed.
Allergy information upon request.

Meal Prices:

Breakfast K-12: \$1.70 Breakfast

Adult \$2.50

Lunch K-5 Paid \$2.45

Lunch 6-12 Paid \$2.55

Adult Lunch \$4.60

