

Using NWEA Knowledge Academy Courses

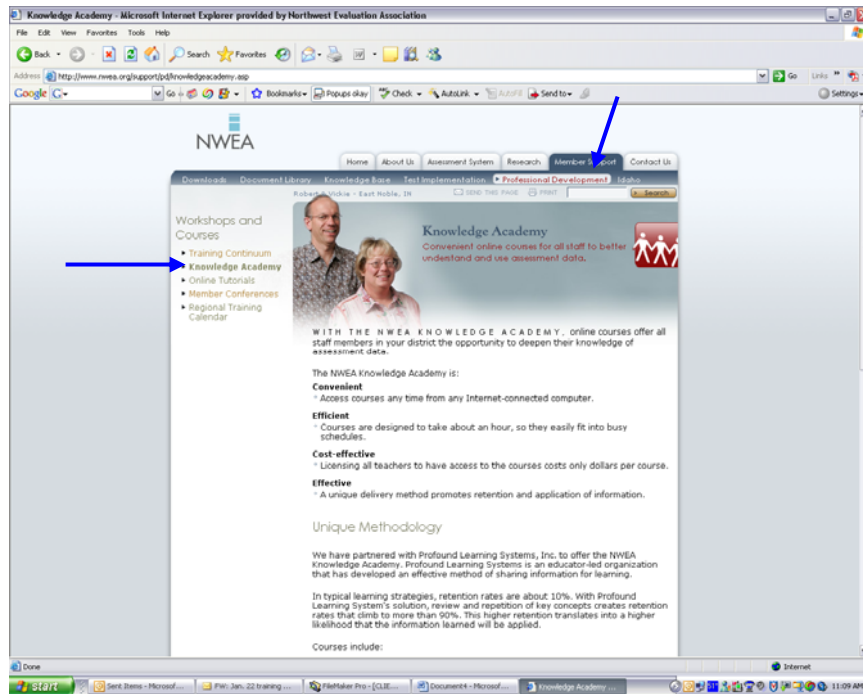
An Introductory Guide

Check the Professional Development section of www.nwea.org for up-to-date listings.

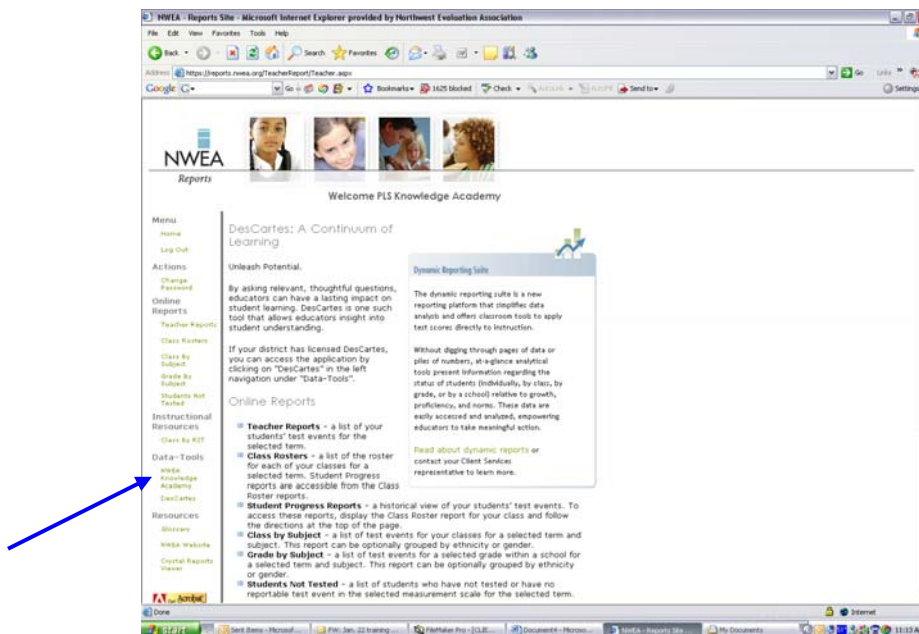
The current Knowledge Academy courses include:

- **MAP Basics**
Gain a basic understanding of the MAP system and how adaptive tests provide accurate and useful information about students' instructional levels.
- **What Every Teacher Needs to Know about MAP**
Learn how to use MAP data to inform your instructional plans.
- **Reports Basics for the Teacher**
Several reports are available after testing. Learn how to access these reports and select the right report for informing decisions in your classroom.
- **Getting the Most from the Teacher Report**
This course is designed to give educators a basic understanding of how to access, read, and interpret an NWEA Teacher Report. It shows how to create a class breakdown sheet that can be used as a springboard for looking at the academic diversity of a class.
- **Making the Most of MAP Science**
Understand how MAP Science tests identify students' instructional levels in two domains of science: Concepts and Processes and General Science.
- **Tools and Resources for Teachers**
Many tools and resources are readily available for teachers as they begin to use the data from NWEA reports to inform instructional practice. Learn about tools such as Instructional Resources, Lexile, DesCartes, and the Knowledge Base.
- **MAP For All Seasons**
This entry-level course is intended to complement the MAP Administration Training by focusing on logistical information for MAP team members in preparation for testing. This course is designed to assist you in training new staff members added since your MAP Administration Training and as a refresher to support you in your ongoing work.
- **Goal Setting: Classroom and Individual Student**
This course is designed to guide a teacher through the steps in goal setting at the classroom and individual student level based on NWEA data. It will also give information and suggestions on communicating with students and parents about the goal being set.
- **DesCartes: A Continuum of Learning**
This course is designed to give participants a basic understanding of DesCartes—a classroom resource that teachers can reference to translate NWEA test scores into learning objectives targeted to individual student needs.

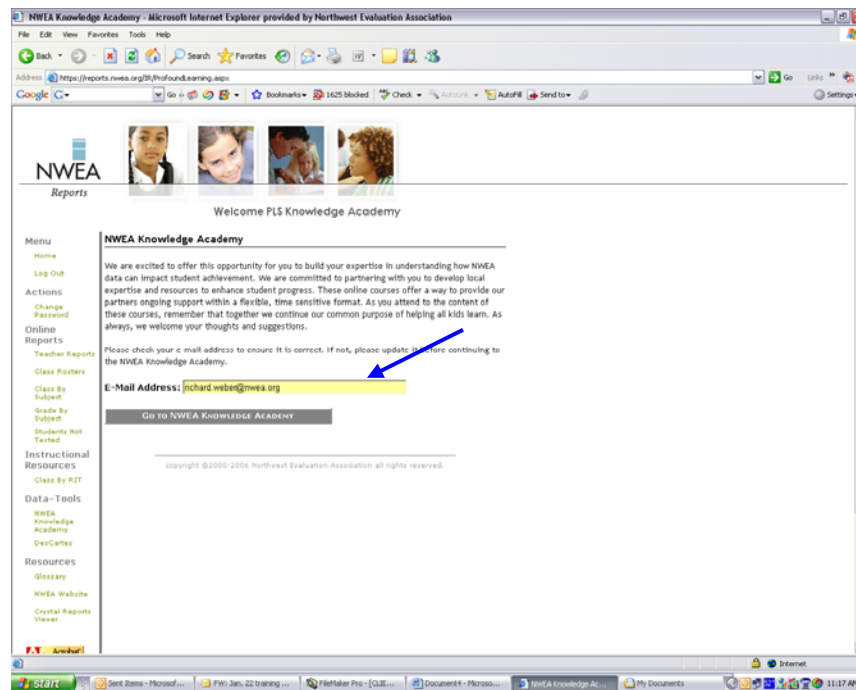
This document will show you how to gain access to these courses. To read more information about the methodology and course descriptions, please see *Professional Development* under the *Member Support* section in the NWEA website.



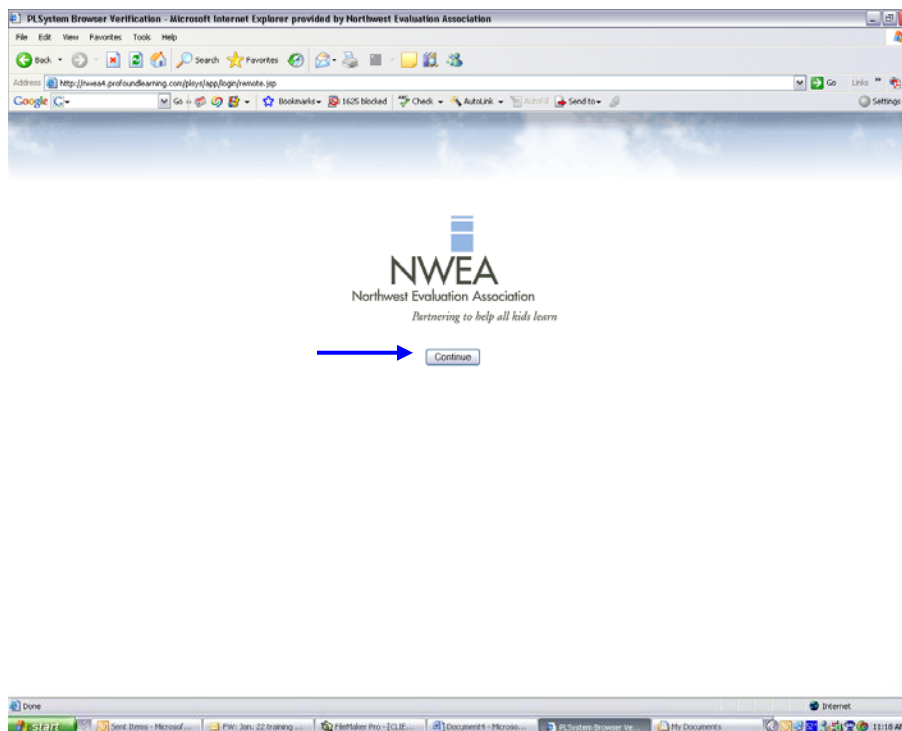
Knowledge Academy courses are accessed by logging onto the NWEA reports website <https://reports.nwea.org> and clicking on the “NWEA Knowledge Academy” link on the left hand menu under Data-Tools. If this link is missing, your district is not licensed for Knowledge Academy use. Please contact your district MAP coordinator or NWEA client support specialist for further information.



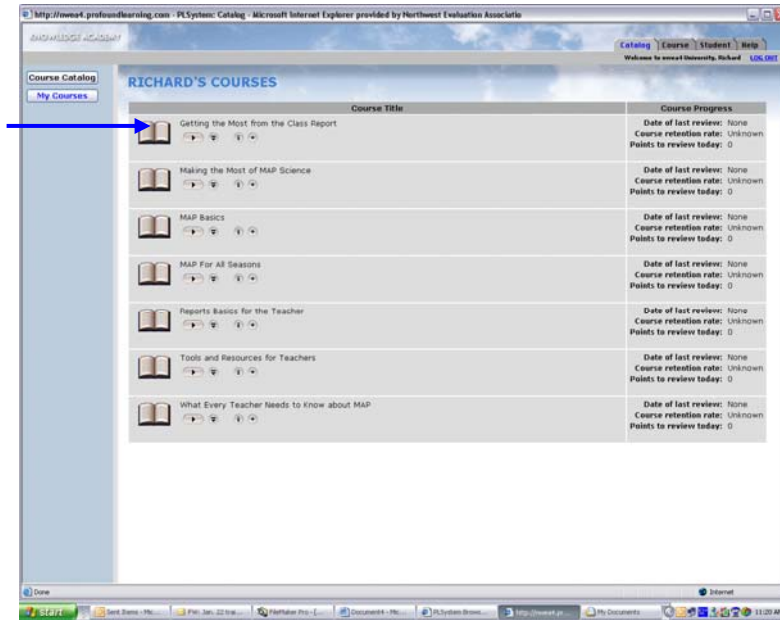
After clicking on “NWEA Knowledge Academy”, enter your email address on the next page and select “Go to NWEA Knowledge Academy”.



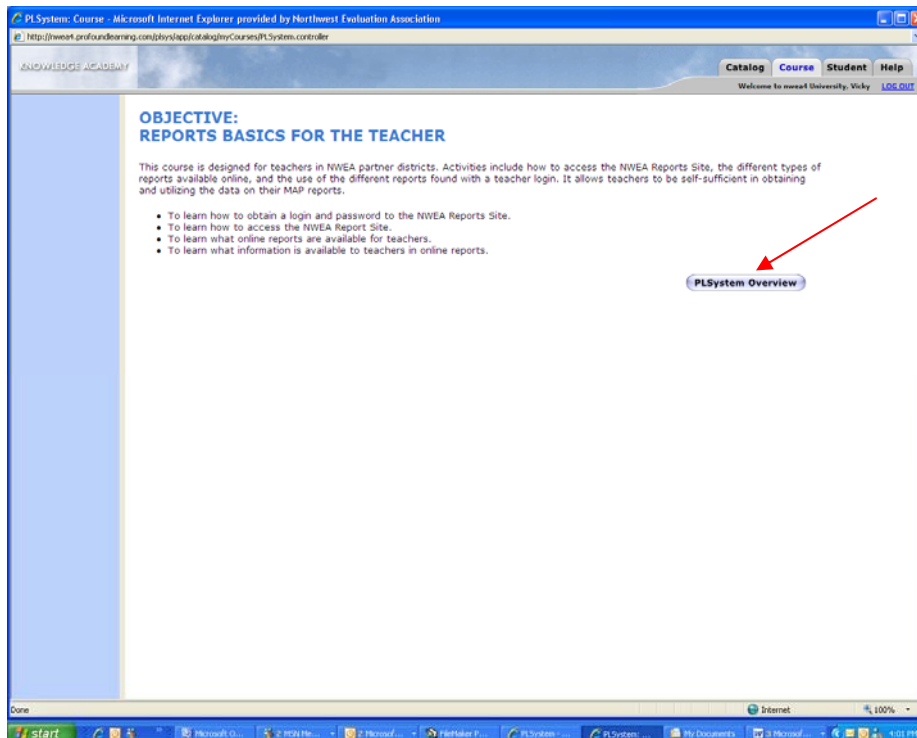
From the next screen select “Continue”.



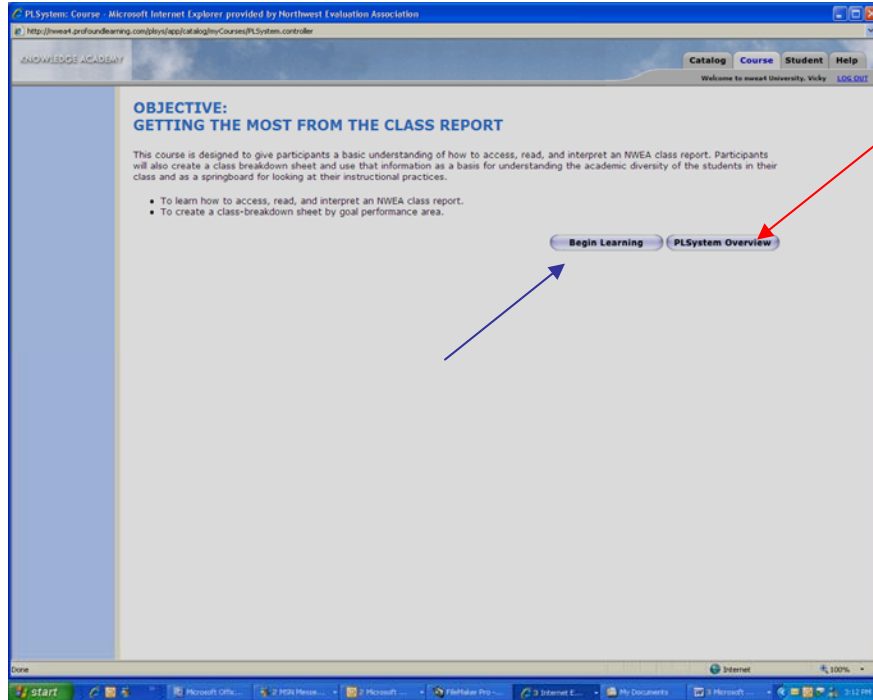
Select the desired course from the list.



Upon your first entrance into Knowledge Academy, you will view the *PLSystem Overview*. This brief presentation explains the fundamental philosophy and features of the course delivery method. You will learn how to use several key features of the course design.



After the initial viewing of the *PLSystem Overview*, prior to beginning a new course you will have a choice to “Begin Learning” or review the PLS tutorial. You will see this screen the first time you select a new course. After you have begun a course and exited, you will immediately see the course contents the next time you select that course.

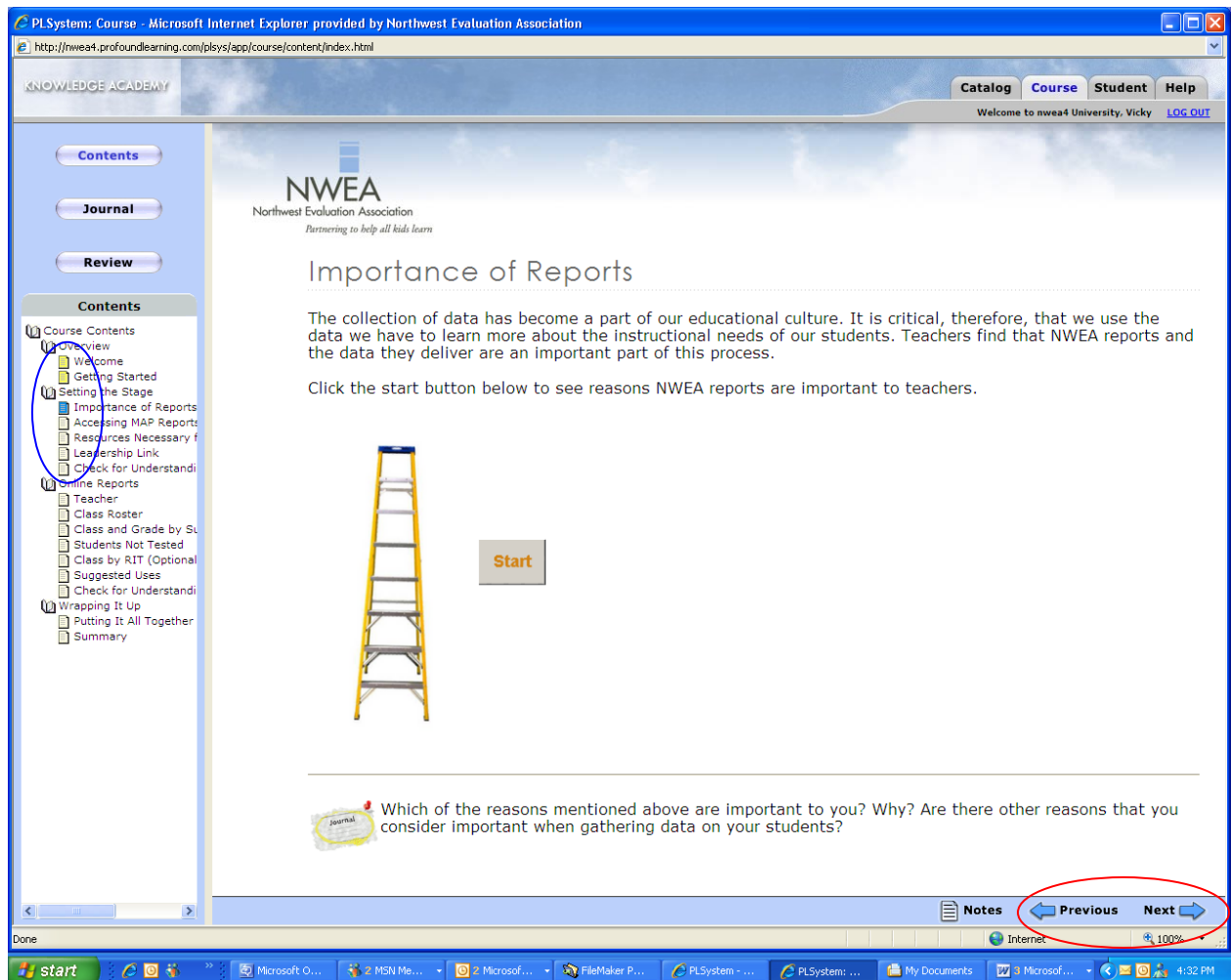


When viewing a course, note the navigation bar on the left side. Courses can be viewed from beginning to end, or you can jump ahead to a section of interest.

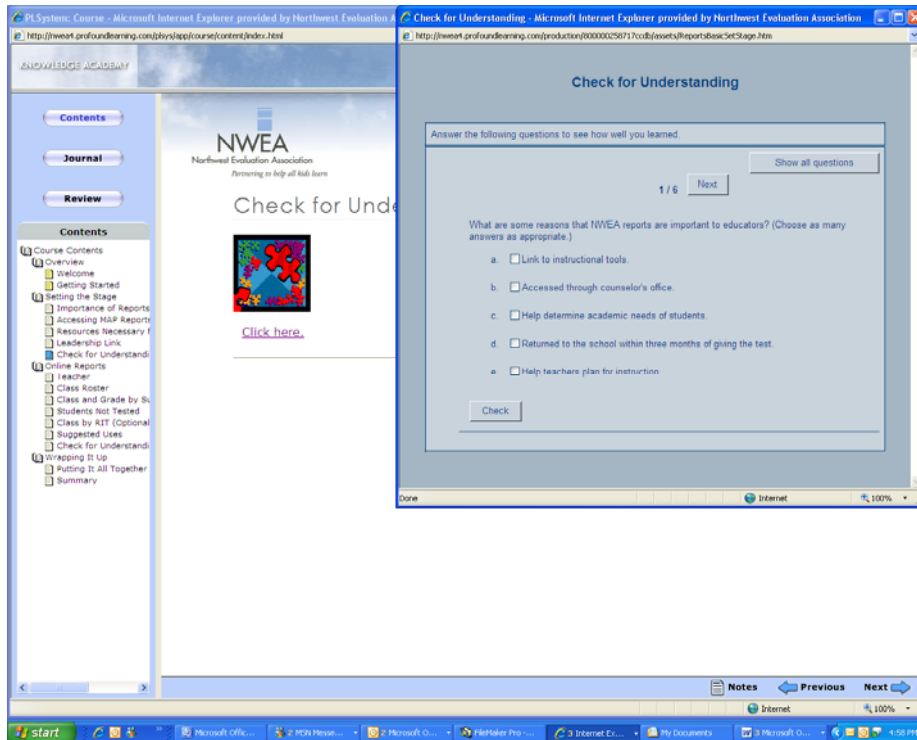


Use the mouse to select any page in the menu. Use the “Next” button to proceed page by page. When you proceed through the course using the “Next” button, the page icons in the contents menu change color after a page is completed. You are only credited with completion when navigating the pages using the “Next” button. The blue page icon notes the page you are presently on. When you exit from a course, the content icons are saved, thus “marking” where you left off.

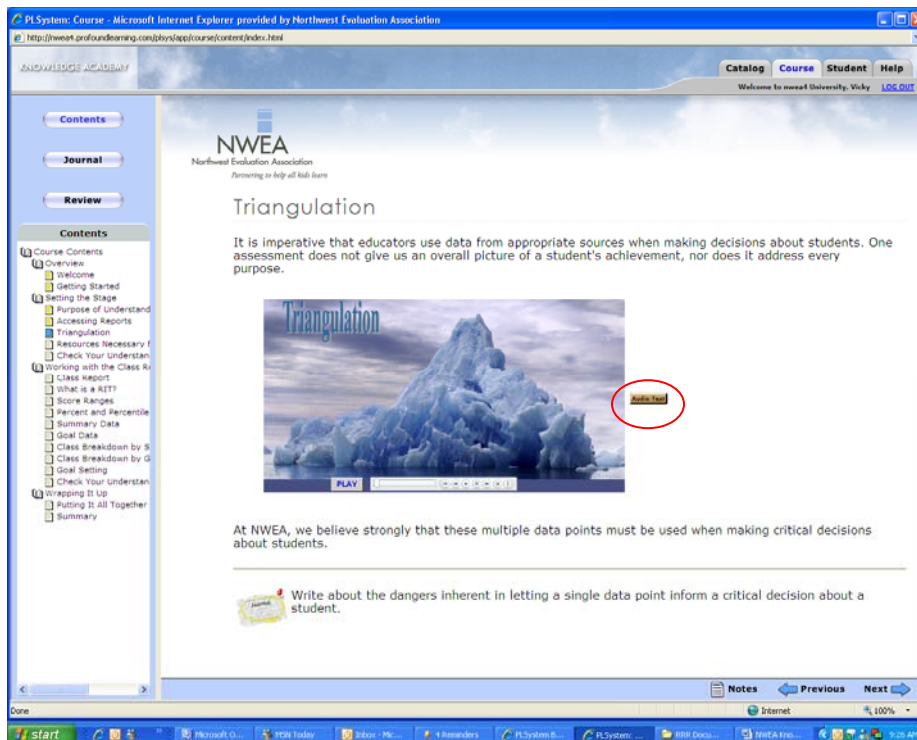
After initial completion of a course, you can quickly and easily navigate to a particular section for review by using the mouse to select the page.



There are interactive links and quizzes embedded in the courses.



There are video clips. Click on the "Audio Text" button to open a window showing the written text for each slide.



The Journal graphic at the bottom encourages you to write about the topic. Click on the “Notes” icon at the bottom of the page to write. Click on the “Journal” button above the contents menu to read or print your personal journal anytime.

The screenshot shows a web browser window displaying the NWEA Knowledge Academy interface. The browser title is "PLSystem: Course - Microsoft Internet Explorer provided by Northwest Evaluation Association" and the address bar shows "http://nwea1.profoundlearning.com/plsys/app/course/content/index.html". The page header includes "KNOWLEDGE ACADEMY" and navigation tabs for "Catalog", "Course", "Student", and "Help". A user is logged in as "Vicky" with a "LOG OUT" link.

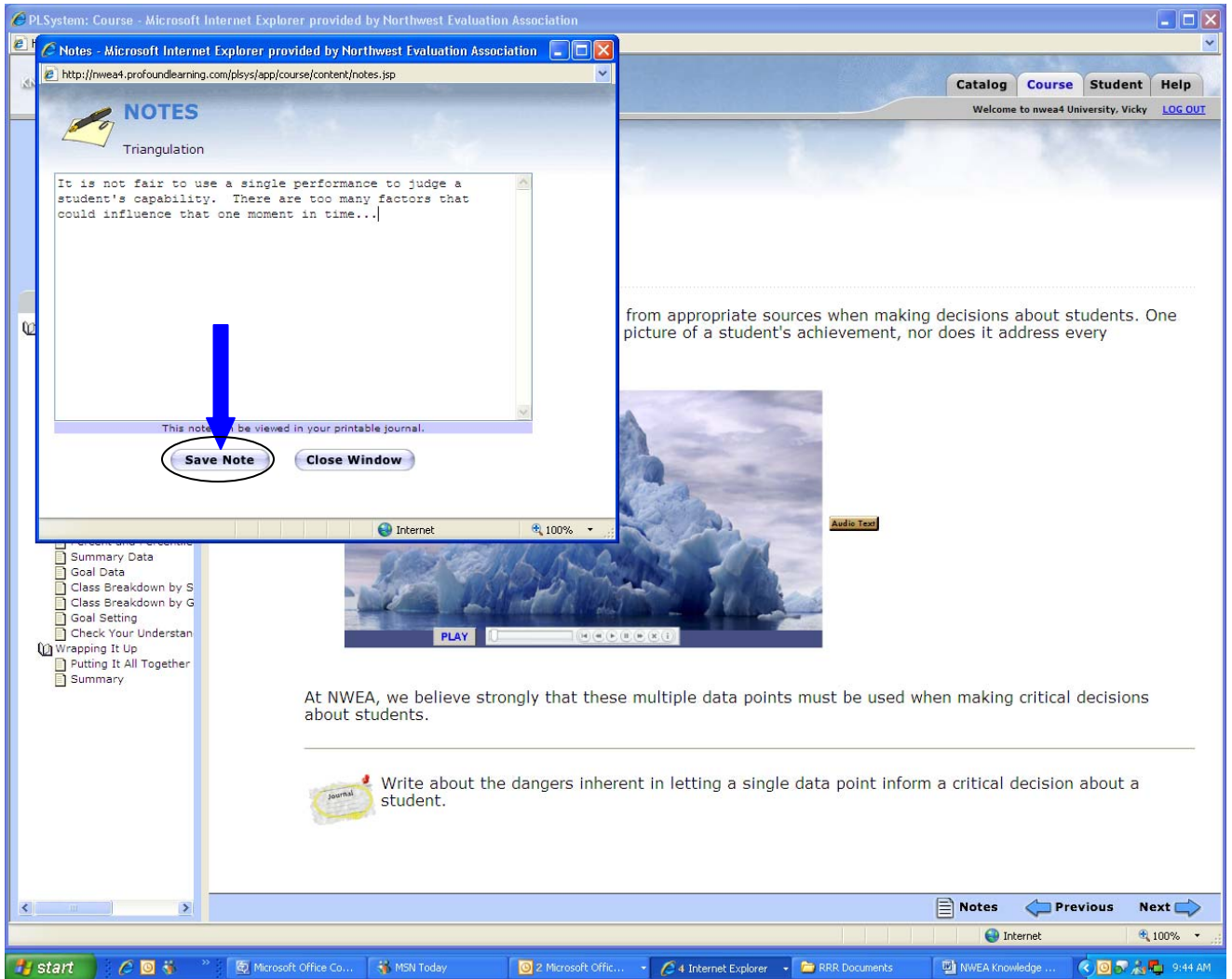
On the left side, there is a "Contents" menu with buttons for "Contents", "Journal", and "Review". A blue arrow points to the "Journal" button. Below these buttons is a detailed "Contents" list with expandable sections like "Course Contents", "Working with the Class Report", and "Wrapping It Up".

The main content area features the NWEA logo and the title "Triangulation". Below the title is a paragraph: "It is imperative that educators use data from appropriate sources when making decisions about students. One assessment does not give us an overall picture of a student's achievement, nor does it address every purpose." This is followed by a video player showing an iceberg with the word "Triangulation" overlaid. A red arrow points to the "Notes" icon at the bottom right of the page.

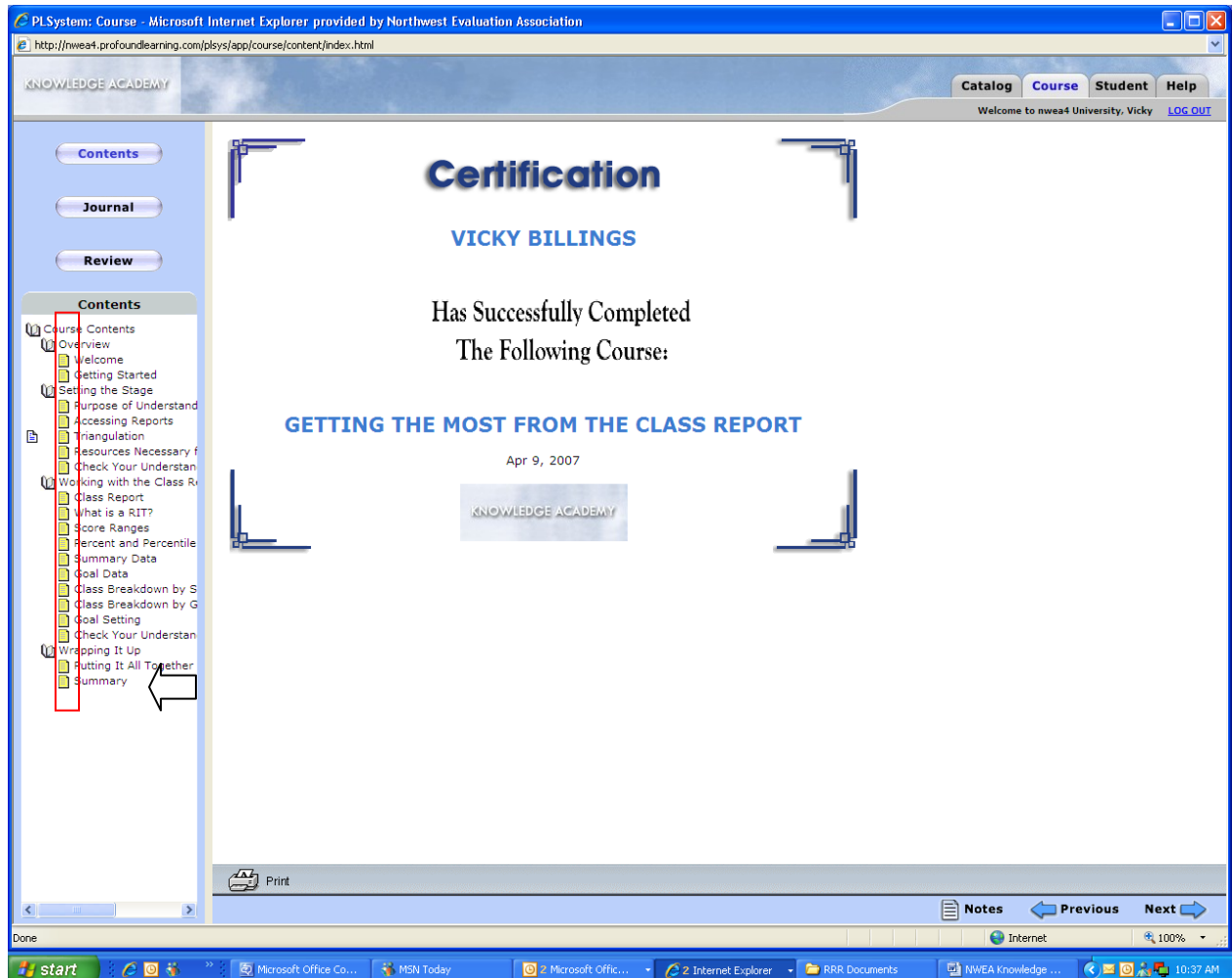
At the bottom of the page, there is a journal prompt: "Write about the dangers inherent in letting a single data point inform a critical decision about a student." A red circle highlights a "Journal" icon next to this prompt. At the very bottom, there are navigation buttons for "Notes", "Previous", and "Next".

Some districts offer continuing education credit for teachers who complete a course and respond to some of the journal topics. This would be up to the district to authorize since requirements for credit differ from state to state.

You must choose to “Save Note” before clicking outside the notes window in order to save your journal entry.



When you've completed every page of the course contents, you will receive a certificate of completion when you click "Next" from the *Summary* page at the end of the course. This certificate can be printed as documentation of course completed. All pages must be completed using the "Next" button, rather than clicking on the pages with the mouse. When all page icons are yellow, you will receive the certificate.



MAP Coordinators may request a Usage report from NWEA to see which teachers have completed courses and the amount of time spent on each course. If you are interested in receiving this report, please email Barbara Mullins at barb.mullins@nwea.org. Please include the MAP Coordinator's name and email, school district name, and state.