



# Washington Community Schools

*Board Work Session | September 19, 2024*

# | Agenda

- Introduction / Orientation
- Configuration Options
- Facility Budgets
- Discussion / Questions





# | Required Independence of Projects

- Indiana Code requires that a project brought forth with official hearings and resolutions must be an “independently desirable end in itself without reference to another capital project”
- Immediate needs cannot be commingled with proposed longer-term visions/future projects

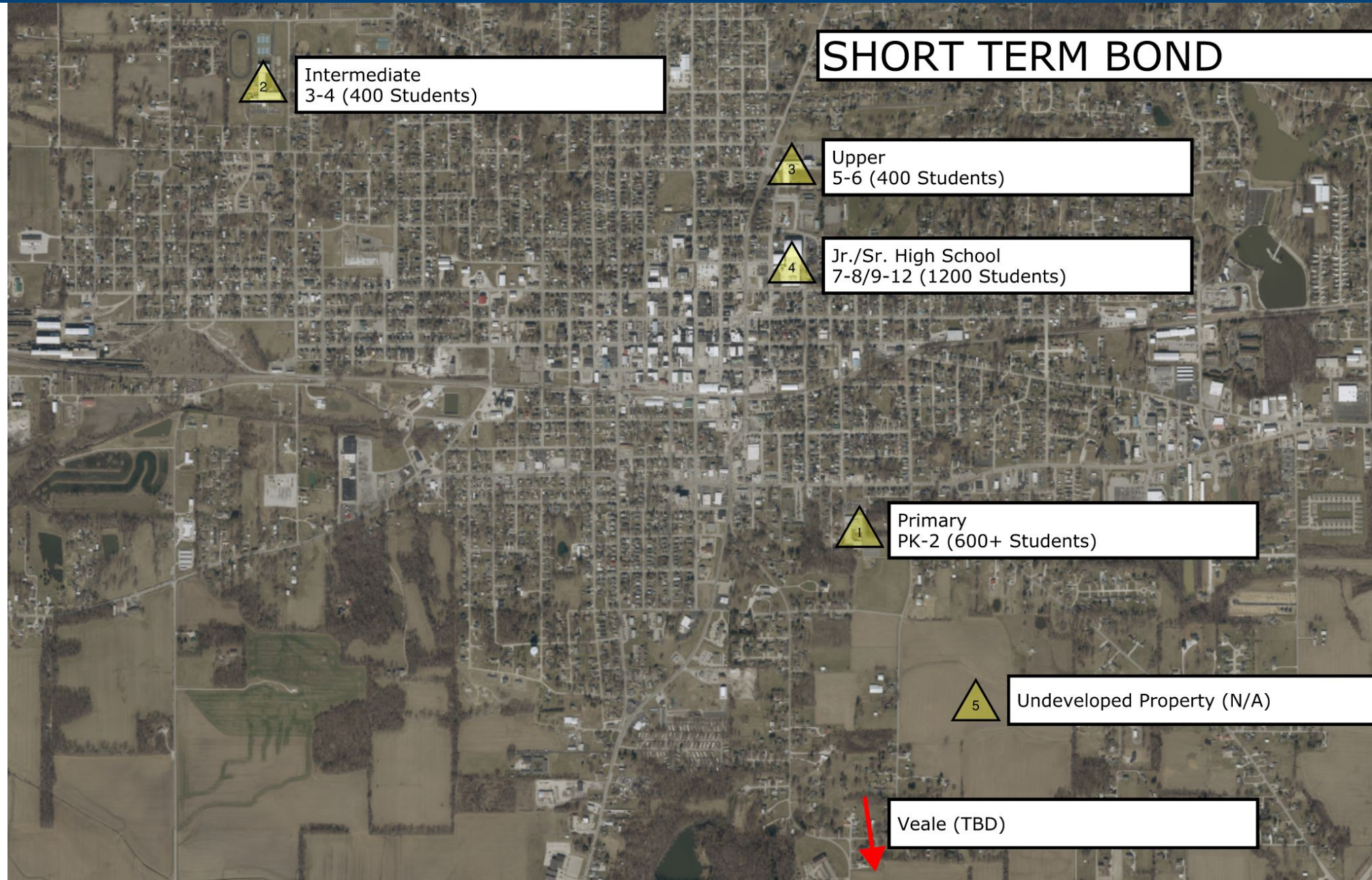


# Short-Term Bond Option

	Veale Elementary	Primary Becomes PK-2 (600+ Students)	Intermediate Becomes 3-4 (400 Students)	Upper Remains 5-6 (400 Students)	Jr/Sr High Remains 7-12 (1200 Students)	New School
Short -Term Bond Option	TBD: Potential Repurpose or Closure	<b>Addition to School</b>  <b>Create safe &amp; secure entry</b>  Creates a 3-grade level school  Increases classroom space	Increases classroom space  Allows existing programs to be located in appropriate spaces  Reduces to a 2-grade level school	<b>Create safe &amp; secure entry</b>  Not overcommitting to facility/future decisions	<b>Create safe &amp; secure entry</b>	N/A
<i>Funds above the cost of projects in green to be used to address other district facility priorities.</i>						



# Short-Term Bond Option





# Referendum Options – Option 1

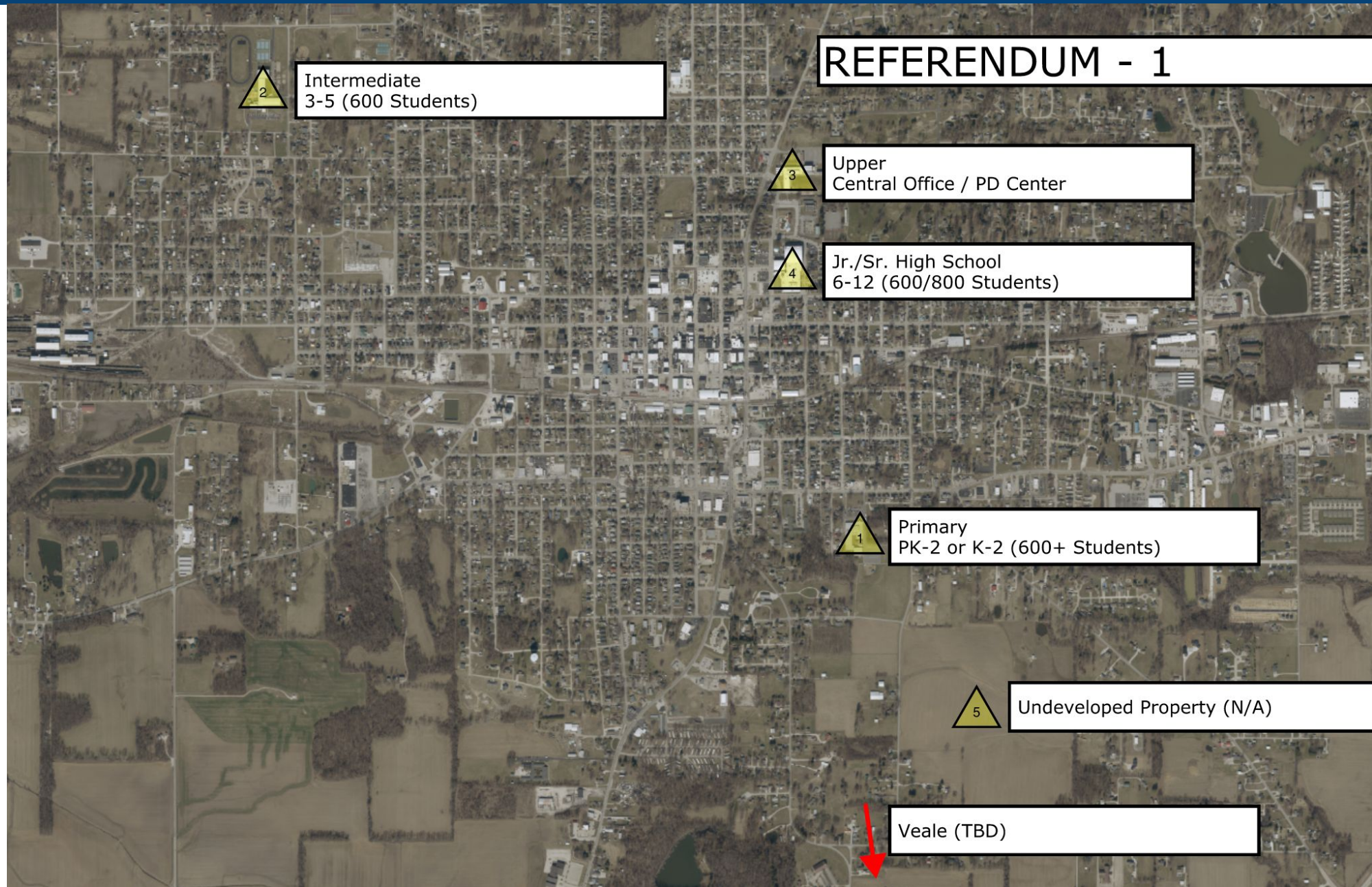
	Veale Elementary	Primary Becomes PK-2 (600+ Students)	Intermediate Becomes 3-4 (400 Students)	Upper Remains 5-6 (400 Students)	Jr/Sr High Remains 7-12 (1200 Students)	New School
Short -Term Bond Option	TBD: Potential Repurpose or Closure	<b>Addition to School</b>  <b>Create safe &amp; secure entry</b>  Creates a 3-grade level school  Increases classroom space	Increases classroom space  Allows existing programs to be located in appropriate spaces  Reduces to a 2-grade level school	<b>Create safe &amp; secure entry</b>  Not overcommitting to facility/future decisions	<b>Create safe &amp; secure entry</b>	N/A

*Funds above the cost of projects in green to be used to address other district facility priorities.*

	Veale Elementary	Primary Remains PK-2 or K-2 (600+ Students)	Intermediate Becomes 3-5 (600 Students)	Upper Becomes Central Office/ PD Center	Jr/Sr High Becomes 6-12 Split Facility (600/800 Students)	New School
OPTION 1	TBD: Potential Repurpose or Closure	Option to move PK to Central Office if desired	<b>Addition to School</b>  Increases classroom space  Creates a 3-grade level school	Reduces operations of current Central Office by closing/ selling facility  Creates district Professional Development and Community Meeting space  Possible PK space	<b>Create attached but separate middle school grades 6-8</b>  Creates 2 schools with 3 or more grade levels  Keeps common operational costs such as one cafeteria, good for shared staff	N/A



# Referendum Options – Option 1



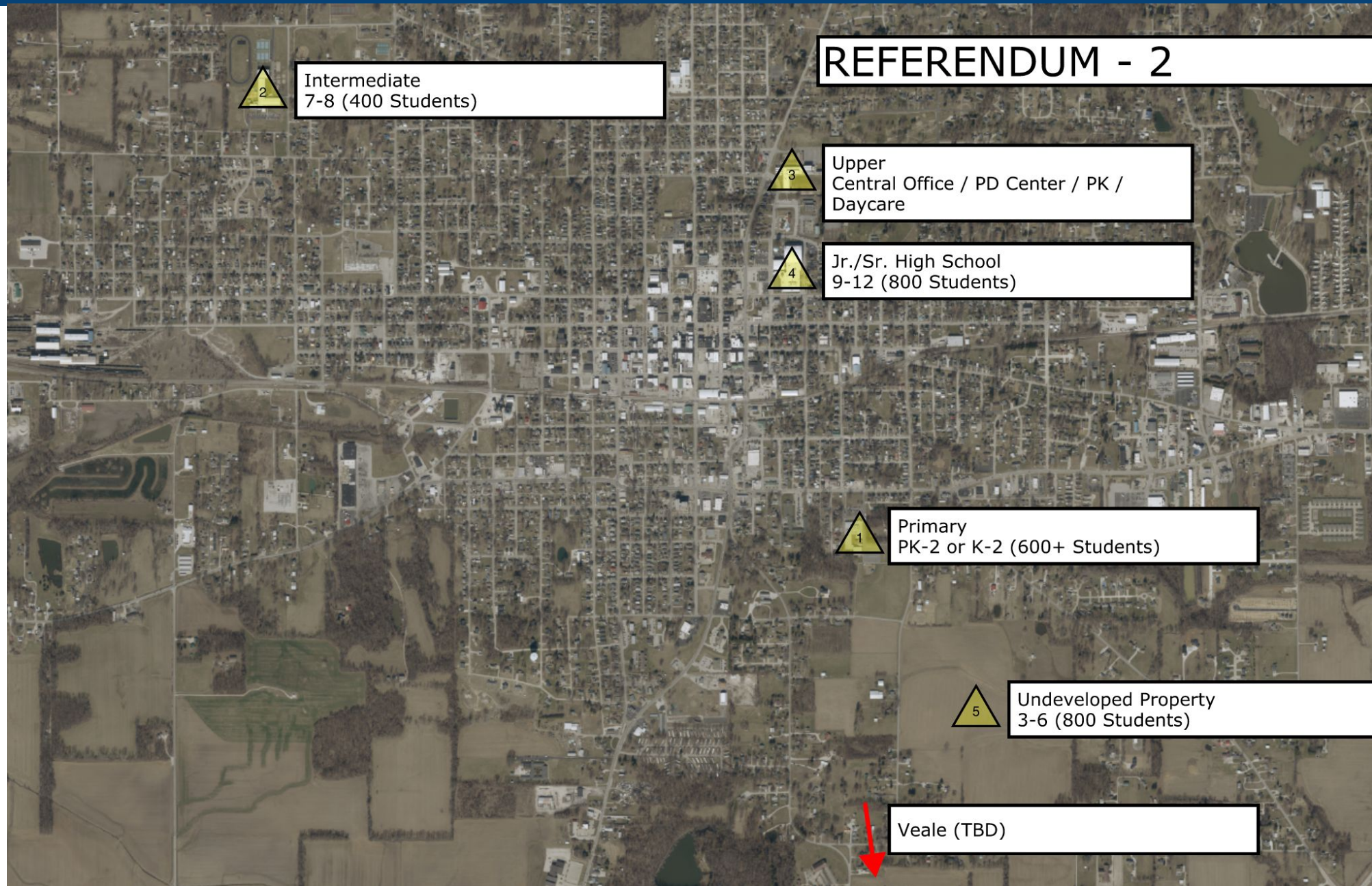


# Referendum Options – Option 2

	Veale Elementary	Primary Becomes PK-2 (600+ Students)	Intermediate Becomes 3-4 (400 Students)	Upper Remains 5-6 (400 Students)	Jr/Sr High Remains 7-12 (1200 Students)	New School
Short -Term Bond Option	TBD: Potential Repurpose or Closure	<b>Addition to School</b>  <b>Create safe &amp; secure entry</b>  Creates a 3-grade level school  Increases classroom space	Increases classroom space  Allows existing programs to be located in appropriate spaces  Reduces to a 2-grade level school	<b>Create safe &amp; secure entry</b>  Not overcommitting to facility/future decisions	<b>Create safe &amp; secure entry</b>	N/A
<i>Funds above the cost of projects in green to be used to address other district facility priorities.</i>						
OPTION 2	Veale Elementary	Primary Remains PK-2 or K-2 (600+ Students)	Intermediate Becomes 7-8 (400 Students)	Upper Becomes Central Office Prof Dev/ PreK / Staff Daycare	Jr/Sr High Becomes 9-12 (800 Students)	New School Grade 3-6 (800 Students)
	TBD: Potential Repurpose or Closure	Option to move PK to Central Office if desired	<b>Renovations for MS programming</b>	<b>Requires some renovation</b>  Moves Central Office and decreases the number of facilities in the district	<b>Program-specific renovations of the facility</b>  Allows HS program space to be increased	<b>New Construction for 4-grade levels</b>



# Referendum Options – Option 2



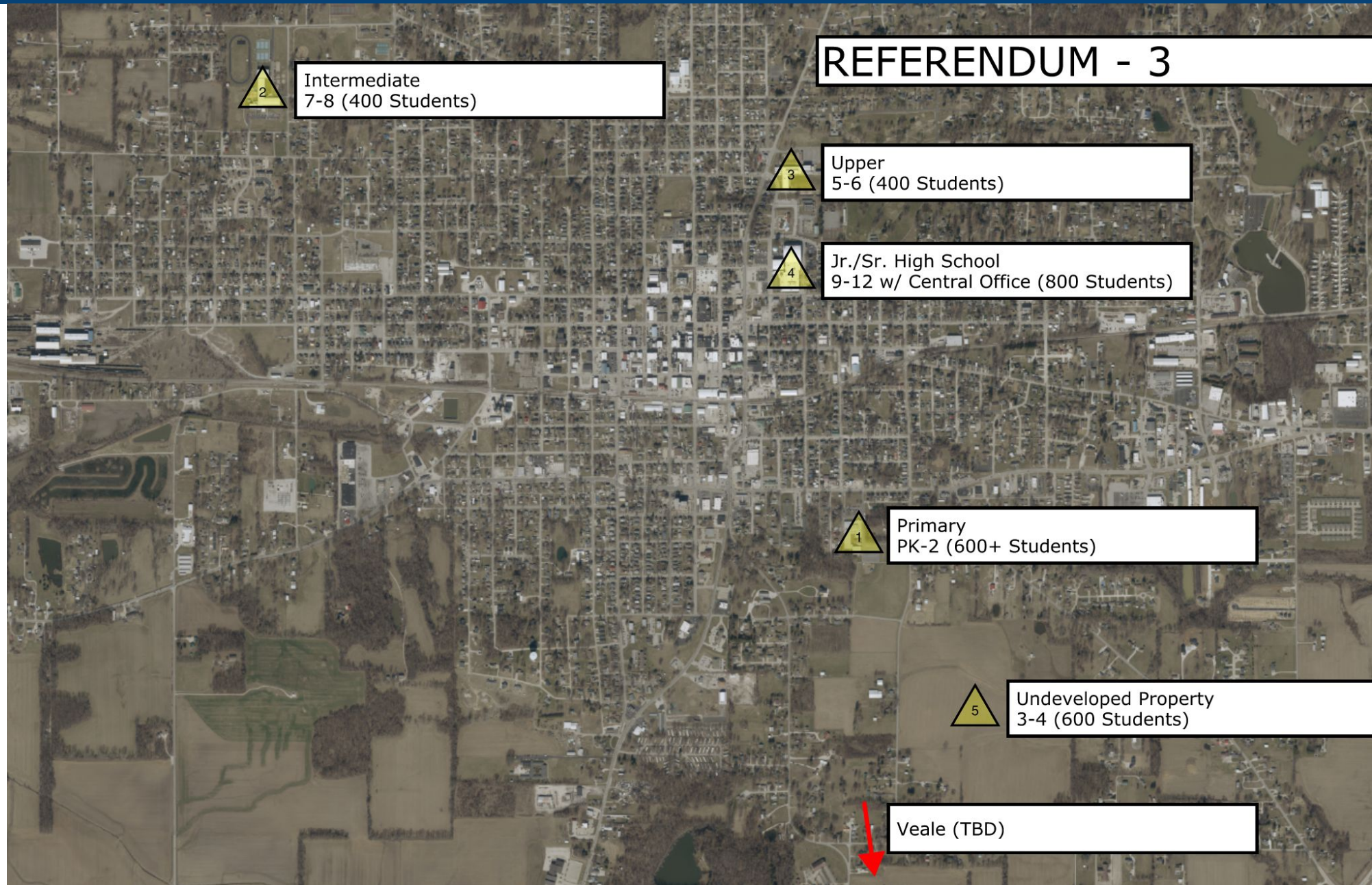


# Referendum Options – Option 3

		<b>Veale Elementary</b>	<b>Primary Becomes PK-2 (600+ Students)</b>	<b>Intermediate Becomes 3-4 (400 Students)</b>	<b>Upper Remains 5-6 (400 Students)</b>	<b>Jr/Sr High Remains 7-12 (1200 Students)</b>	<b>New School</b>
<b>Short -Term Bond Option</b>		<b>TBD: Potential Repurpose or Closure</b>	<b>Addition to School</b>  <b>Create safe &amp; secure entry</b>  Creates a 3-grade level school  Increases classroom space	Increases classroom space  Allows existing programs to be located in appropriate spaces  Reduces to a 2-grade level school	<b>Create safe &amp; secure entry</b>  Not overcommitting to facility/future decisions	<b>Create safe &amp; secure entry</b>	<b>N/A</b>
	<b>Funds above the cost of projects in green to be used to address other district facility priorities.</b>						
<b>OPTION 3</b>		<b>Veale Elementary</b>	<b>Primary Remains PK-2 (600+ Students)</b>	<b>Intermediate Becomes 7-8 (400 Students)</b>	<b>Upper Remains 5-6 (400 Students)</b>	<b>Jr/Sr High Becomes 9-12 with Central Office (800 Students)</b>	<b>New School Grades 3-4 (400 Students)</b>
		<b>TBD: Potential Repurpose or Closure</b>	No additional changes	<b>Intermediate renovations for MS programming</b>	<b>Consider renovations to the auditorium to remove portable classrooms</b>	<b>Renovations for select programs and Central Office</b>  Move the Central Office to HS and reduce by a facility	<b>New Construction for 2-grade levels</b>



# Referendum Options – Option 3





# Referendum Options – Option 4

	Veale Elementary	Primary Becomes PK-2 (600+ Students)	Intermediate Becomes 3-4 (400 Students)	Upper Remains 5-6 (400 Students)	Jr/Sr High Remains 7-12 (1200 Students)	New School
Short -Term Bond Option	TBD: Potential Repurpose or Closure	<b>Addition to School</b>  <b>Create safe &amp; secure entry</b>  Creates a 3-grade level school  Increases classroom space	Increases classroom space  Allows existing programs to be located in appropriate spaces  Reduces to a 2-grade level school	<b>Create safe &amp; secure entry</b>  Not overcommitting to facility/future decisions	<b>Create safe &amp; secure entry</b>	N/A
<i>Funds above the cost of projects in green to be used to address other district facility priorities.</i>						
OPTION 4	Veale Elementary	Primary Remains PK-2 (600+ Students)	Intermediate Becomes 3-5 (600 Students)	Upper Closed or Repurposed	Jr/Sr High Becomes 9-12 with Central Office (800 Students)	New School Grades 6-8 (600 Students)
	TBD: Potential Repurpose or Closure	No additional changes	<b>Requires renovations and a possible addition to the school</b>	TBD: Repurpose or Potential Closure	<b>Renovations for select programs and Central Office</b>  Move the Central Office to HS and reduce by a facility	<b>New Construction For 3-grade levels</b>



# Referendum Options – Option 4



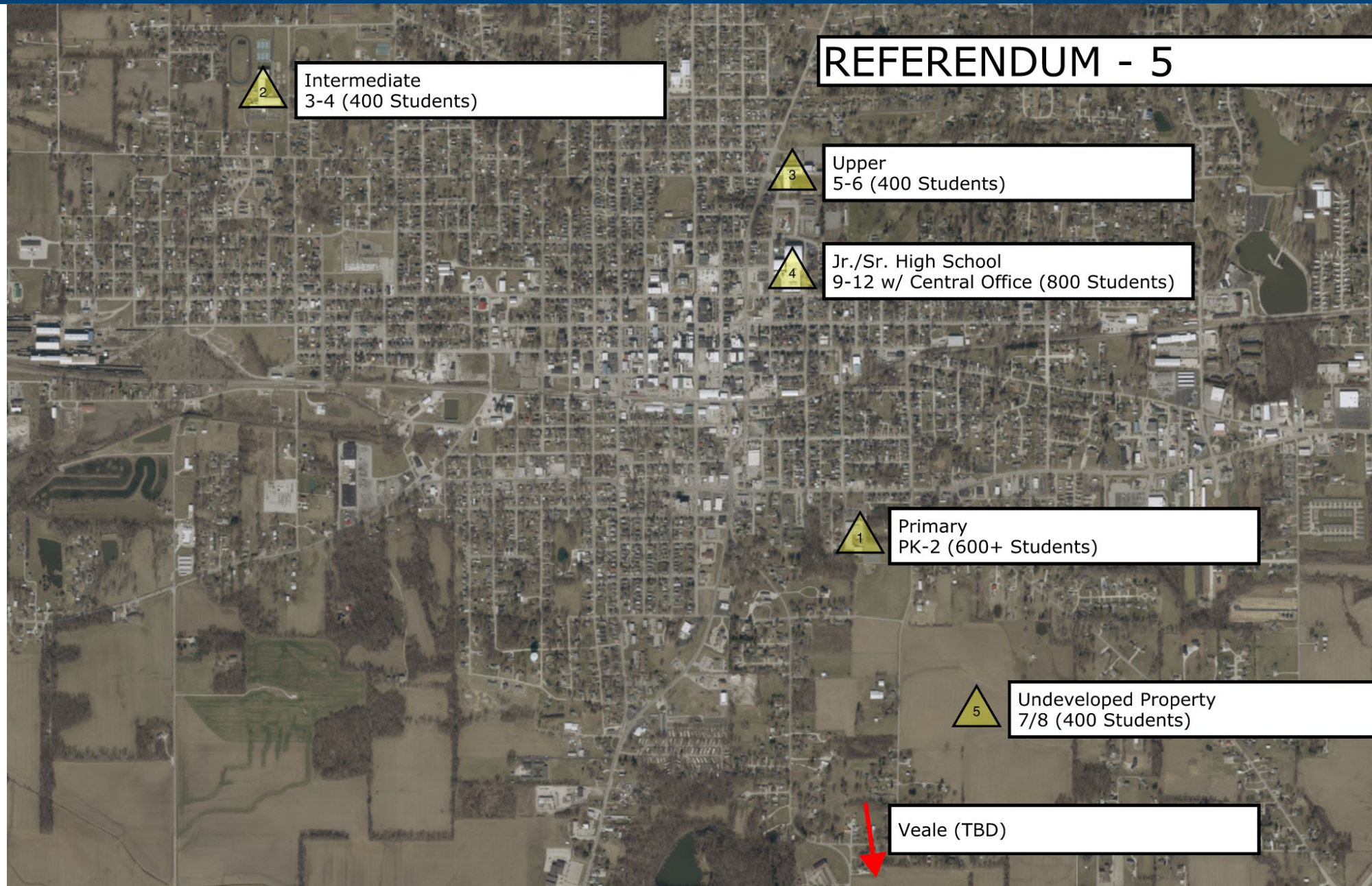


# Referendum Options – Option 5

		<b>Veale Elementary</b>	<b>Primary Becomes PK-2 (600+ Students)</b>	<b>Intermediate Becomes 3-4 (400 Students)</b>	<b>Upper Remains 5-6 (400 Students)</b>	<b>Jr/Sr High Remains 7-12 (1200 Students)</b>	<b>New School</b>
<b>Short -Term Bond Option</b>		<b>TBD: Potential Repurpose or Closure</b>	<b>Addition to School</b>  <b>Create safe &amp; secure entry</b>  Creates a 3-grade level school  Increases classroom space	Increases classroom space  Allows existing programs to be located in appropriate spaces  Reduces to a 2-grade level school	<b>Create safe &amp; secure entry</b>  Not overcommitting to facility/future decisions	<b>Create safe &amp; secure entry</b>	<b>N/A</b>
	<b>Funds above the cost of projects in green to be used to address other district facility priorities.</b>						
<b>OPTION 5</b>		<b>Veale Elementary</b>	<b>Primary Remains PK-2 (600+ Students)</b>	<b>Intermediate Remains 3-4 (400 Students)</b>	<b>Upper Remains 5-6 (400 Students)</b>	<b>Jr/Sr High Becomes 9-12 Facility with Central Office (800 Students)</b>	<b>New Middle School Grades 7-8 (400 Students)</b>
		<b>TBD: Potential Repurpose or Closure</b>	No additional changes	No additional changes	No additional changes	<b>Renovations for select programs, entrance and Central Office</b>  Move Central Office to HS and reduce by a facility	<b>New Construction for 2-grade levels</b>



# Referendum Options – Option 5





# Budget Estimates



# Short-Term Bond Option

Preliminary Budget Estimate		
Description		Estimate
<b>Short Term - Bond</b>		<b>\$ 24,550,000</b>
<b>1</b>	<b>PK-2 Primary School Existing Facility Additions &amp; Renovations (600 students + 2 preschool classrooms)</b>	<b>\$ 24,400,000</b>
	Building Additions	\$ 13,900,000
	Building Renovations (assumes full building renovation)	\$ 8,200,000
	Sitework (includes playground rebuild / expansion)	\$ 2,300,000
<b>2</b>	<b>3-4 Intermediate School Renovations (400 students)</b>	<b>\$ -</b>
	Alternate: Provide ramp to depressed library/STEM area (not included in totals)	\$ 50,000
	Alternate: HVAC infrastructure renovations (not included in totals)	\$ 4,600,000
<b>3</b>	<b>5-6 Upper Elementary Renovations (400 students)</b>	<b>\$ 100,000</b>
	Secure entrance improvements	
<b>4</b>	<b>Jr. / Sr. High School Renovations</b>	<b>\$ 50,000</b>
	Alternate: High school secure entrance improvements (not included in totals)	\$ 650,000
	Jr. high school secure entrance improvements	\$ 50,000



# Referendum Options – Option 1

Referendum Options		
	<b>Option 1</b>	<b>TBD</b>
<b>1.1</b>	<b>PK-2 Primary School (600 students + 2 preschool classrooms) - No Work</b>	
<b>1.2</b>	<b>Intermediate Becomes 3-5 (600 students) - Additions &amp; Renovations</b>	<b>TBD</b>
	Building Additions	
	Renovations (includes replacing panel type classroom walls)	
	HVAC infrastructure renovations	
	Reroofing	
	Sitework	
<b>1.3</b>	<b>Upper Elementary Becomes Central Office &amp; Prof. Dvlpmt. Center</b>	<b>TBD</b>
	Renovations	
	HVAC infrastructure renovations	
<b>1.4</b>	<b>Jr. / Sr. High School Becomes Grades 6-12 (1,400 students) Additions &amp; Renovations</b>	<b>\$ 52,600,000</b>
	Building Additions	\$ 35,400,000
	Renovations	\$ 9,400,000
	Sitework	\$ 7,800,000
	HVAC infrastructure renovations	
	Reroofing	



# Referendum Options – Option 2

	Option 2	TBD
2.1	K-2 Primary School (600 students) - No Work	
2.2	Intermediate Becomes 7-8 Middle School (400 students) - Renovations	TBD
	Renovations (includes replacing panel type classroom walls)	
	HVAC infrastructure renovations	
	Reroofing	
2.3	Upper Elementary Becomes Central Office, Prof. Dvlpmt. & PK Center	TBD
	Renovations	
	HVAC infrastructure renovations	
2.4	Jr. / Sr. High School Becomes Grades 9-12 High School (800 students) - Renovations	TBD
	Renovations	
	HVAC infrastructure renovations	
	Reroofing	
	Sitework (parking lot paving / safety / security entrance improvements)	
2.5	New School Grades 3-6 (800 students)	\$ 59,000,000
	Building	\$ 49,700,000
	Sitework	\$ 9,300,000



# Referendum Options – Option 3

	<b>Option 3</b>	<b>TBD</b>
<b>3.1</b>	<b>K-2 Primary School (600 students + 2 preschool classrooms) - No Work</b>	
<b>3.2</b>	<b>Intermediate Becomes Grades 7-8 Middle School (400 students) - Renovations</b>	<b>TBD</b>
	Renovations (includes replacing panel type classroom walls)	
	HVAC infrastructure renovations	
	Reroofing	
<b>3.3</b>	<b>Upper Elementary Remains Grades 5-6 (400 students) - Renovations</b>	<b>TBD</b>
	Renovations	
	HVAC infrastructure renovations	
<b>3.4</b>	<b>Jr. / Sr. High School Becomes Grades 9-12 High School w/ Central Office (800 students) - Renovations</b>	<b>TBD</b>
	Renovations	
	HVAC infrastructure renovations	
	Reroofing	
	Sitework (parking lot paving / safety / security entrance improvements)	
<b>3.5</b>	<b>New School Grades 3-4 (400 students)</b>	<b>\$ 43,500,000</b>
	Building	\$ 36,700,000
	Sitework	\$ 6,800,000



# Referendum Options – Option 4

	Option 4	TBD
4.1	K-2 Primary School (600 students + 2 preschool classrooms) - No Work	
4.2	Intermediate Becomes 3-5 (600 students) - Additions & Renovations	TBD
	Building Additions	
	Renovations (includes replacing panel type classroom walls)	
	HVAC infrastructure renovations	
	Reroofing	
	Sitework	
4.3	Upper Elementary Repurposed - No Work	
4.4	Jr. / Sr. High School Becomes Grades 9-12 High School w/ Central Office (800 students) - Renovations	TBD
	Renovations	
	HVAC infrastructure renovations	
	Reroofing	
	Sitework (parking lot paving / safety / security entrance improvements)	
4.5	New School Grades 6-8 Middle School (600 students)	\$ 71,700,000
	Building	\$ 60,400,000
	Sitework	\$ 11,300,000



# Referendum Options – Option 5

	<b>Option 5</b>	<b>TBD</b>
<b>5.1</b>	<b>K-2 Primary School (600 students + 2 preschool classrooms) - No Work</b>	
<b>5.2</b>	<b>Intermediate Remains Grades 3-4 (400 students) - Renovations</b>	<b>TBD</b>
	HVAC infrastructure renovations	
	Renovations	
	Reroofing	
<b>5.3</b>	<b>Upper Elementary Remains Grades 5-6 (400 students) - Renovations</b>	<b>TBD</b>
	Renovations	
	HVAC infrastructure renovations	
<b>5.4</b>	<b>Jr. / Sr. High School Becomes Grades 9-12 High School w/ Central Office (800 students) - Renovations</b>	<b>TBD</b>
	Renovations	
	HVAC infrastructure renovations	
	Reroofing	
	Sitework (parking lot paving / safety / security entrance improvements)	
<b>5.5</b>	<b>New School Grades 7-8 Middle School (400 students)</b>	<b>\$ 51,600,000</b>
	Building	\$ 43,500,000
	Sitework	\$ 8,100,000



Questions?



**Washington Community Schools**

*Board Work Session | September 19, 2024*

