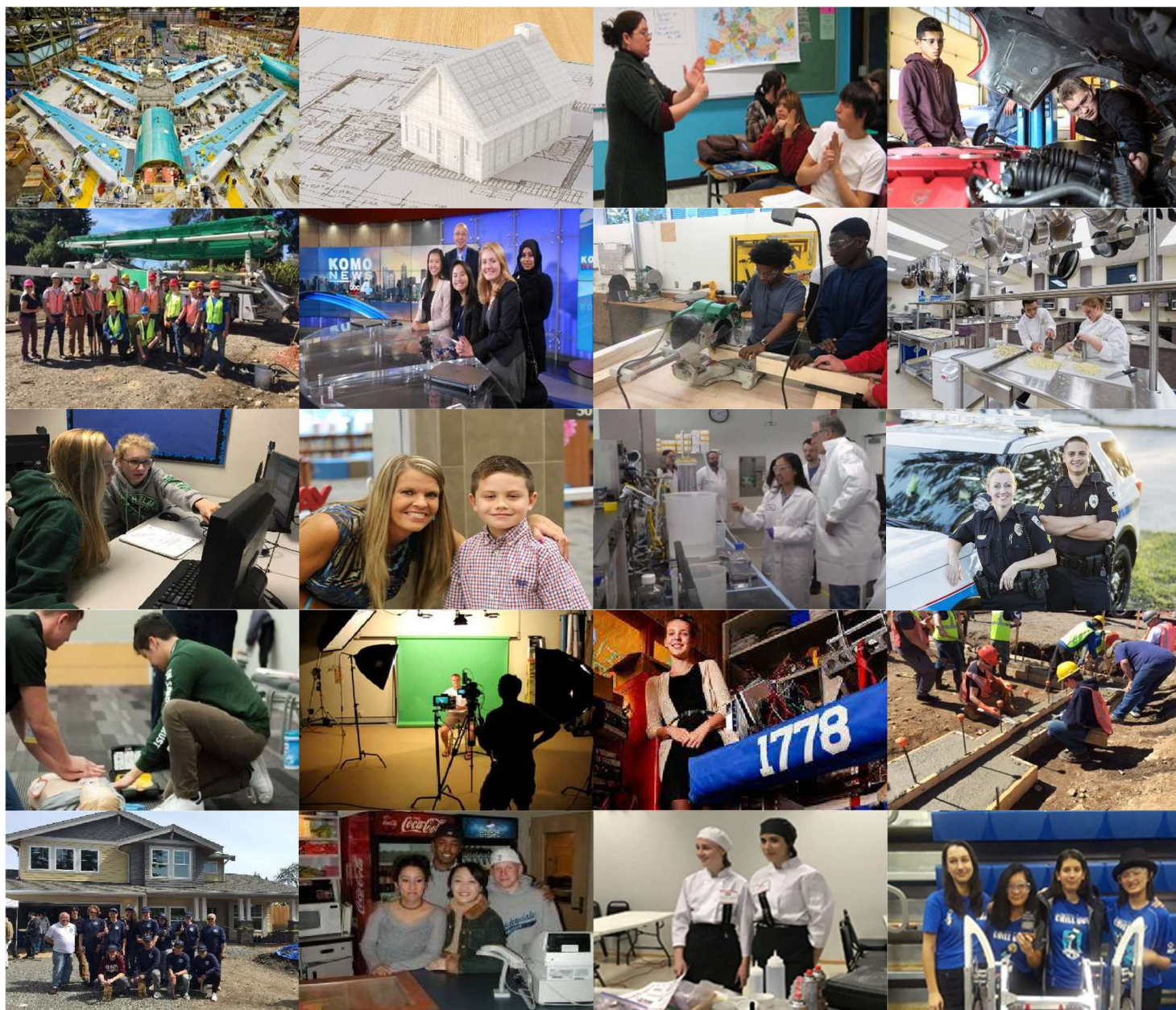


Edmonds School District

Career and Technical Education Pathways Planning Guide





Career and Technical Education Pathways

Recent changes in state graduation requirements provides students in the class of 2020 and beyond the option to meet state Math and English/Language Arts Graduation Pathway requirements by completing 2 credits within an approved Career and Technical Education (CTE) Pathway related to their career interests and goals. An approved CTE Pathway consists of a sequence of CTE courses in a specific program area that:

- Provide opportunities to earn college credit and/or an industry certification, and
- Lead directly to employment or an articulated college or apprenticeship program.

This CTE Pathways Planning guide introduces students to approved CTE Pathways available in the Edmonds School District and provides information on including CTE Pathways as part of their 4-year plan for high school and beyond.

Table of Contents

CTE Pathways Planning Worksheet.....	3
--------------------------------------	---

Approved CTE Pathways

Aerospace Manufacturing Pathway	4
Architectural Design/CAD Pathway	6
ASL/Sign Language Interpreter Pathway	8
Automotive Technology Pathway.....	10
Biotechnology Pathway	12
Business, Marketing, and IT Pathway	14
Carpentry and Construction Trades Pathway	18
Computer Science and Engineering Pathway.....	20
Culinary Arts Pathway	23
Education and Human Services Pathway.....	25
Healthcare Professions Pathway	28
Horticulture Pathway.....	30
Journalism Pathway (Mountlake Terrace HS).....	32
Sports Medicine Pathway	34
Visual Communications Pathway.....	36

CTE Equivalency and College Credit Course Information

CTE Equivalency Credit Courses.....	39
CTE College Credit Courses	40



CTE Pathways Planning Worksheet

The following 4-Year planning worksheet is provided for students who wish to pursue a CTE Pathway based on their career interests and goals. Sample 4-year High School plans are provided for each of the CTE Pathways offered in this guide to assist you. Students can satisfy state Math and English/Language Arts Graduation Pathway requirements by completing 2 credits within a specific CTE Pathway that is aligned with their career interests and goals.

What are your Career Interests/Goals? _____

What do you want to do after you graduate high school?

- ☐ Go directly to work
☐ Enter an Apprenticeship Program
☐ Enlist in the Military
☐ Obtain a Career Certificate at a Community or Technical College
- ☐ Obtain an Associate Degree at a Community or Technical College
☐ Obtain a Bachelor Degree at a 4-year college or university.

Are you pursuing 2 credits from a specific CTE Graduation Pathway as part of your Plan? If so, which CTE Pathway are you building into your plan?

- ☐ Aerospace Manufacturing
- ☐ Architectural Design/CAD
- ☐ ASL/Sign Language Interpreter
- ☐ Automotive Technology
- ☐ Biotechnology
- ☐ Business, Marketing, and IT
- ☐ Carpentry and Construction
- ☐ Computer Science and Engineering
- ☐ Culinary Arts
- ☐ Education and Human Services
- ☐ Healthcare Professions
- ☐ Horticulture
- ☐ Journalism (Mountlake Terrace HS)
- ☐ Sports Medicine
- ☐ Visual Communications

Important Planning Tips:

- ✓ **Need more room in your schedule to make your CTE Pathway fit?**
Many CTE Pathway courses can be used to meet two or graduation requirements such as Math, Science, Health, PE, English, and Art.
- ✓ **Planning on enrolling in a 4-year college or university after high school? If so, make sure to add the following to your plan:**
 - 2 credits of a World Language
 - Senior Year Math course
- ✓ **Be sure to review your plan with your school counselor and family before selecting your classes.**

Design Your 4-Year High School Plan	
Grade 9	
English	
Math	
Science	
World History 9	Health
PE	Art
Elective:	Elective:
Grade 10	
English	
Math	
Social Studies	
Science	
PE	Art
Elective:	Elective:
Grade 11	
English	
Math	
US History	
Science	
Elective:	Elective:
Elective:	Elective:
Grade 12	
English	
Sr. Social Studies	
Personal Finance	PE
Elective:	Elective:
Elective:	Elective:
Elective:	Elective:

Aerospace Manufacturing Pathway



The Aerospace Manufacturing pathway is a great program for students interested in high demand, high wage jobs in the Manufacturing industry. **Students who complete 2 credits in this pathway will meet state ELA and Math Graduation Pathway requirements, and...**

- Obtain Core Plus certification using the Boeing Company's manufacturing curriculum.
- Have opportunity to interview with Boeing for entry-level jobs and internships.
- Earn college credits which can be applied directly into partner college programs.
- Meet English, 3rd Year Math and Science requirements through their Pathway courses.

This CTE Pathway is a great fit for students who...

- ✓ Enjoy projects where they work with their hands and use tools.
- ✓ Enjoy learning by designing, assembling and fixing things.
- ✓ Feel comfortable in a shop environment.
- ✓ Have an attention to detail and precision in their work.
- ✓ Are interested in getting a manufacturing job right after high school or continuing training in a related field.

Start Your Pathway with 2 or more credits of Pathway courses

Then, After You Have Finished High School...

Finally, Begin Your Career!

1. Choose Your Pathway Courses

To meet your Graduation Pathway requirement through this CTE Pathway, **select the following 2.0 credit Intradistrict course:**

- VOC147/148 Applied Engineering and Manufacturing

2. Build Your Education Plan

Using the *CTE Pathways Planning Worksheet* on page 3 of this Planning Guide, incorporate your selected course into your 4-Year High School Education Plan.

Continue your training on the job by starting your career right out of high school:

- Entry level Aircraft Assemblers or Machinist

Apply college credits earned in this Pathway directly into these partner college programs:

Edmonds College or Lake Washington Institute of Technology

- Engineering Technology certificate and degree programs.

Continue your training in another college program such as:

Everett Community College

- Aerospace and Advanced Manufacturing certificate and degree programs
- Mechatronics certificate and degree programs.

University of Washington or Washington State University

- Engineering (multiple areas)

Jobs you can get after graduation with this High School training:

Aircraft Assemblers
Machinists

Jobs you can get with 2-Years Post-High School Training:

Aircraft Mechanics and Service Technicians
Avionics Technicians
Engineering Technicians
Mechatronics Technician

Jobs you can get with 4 or more Years Post-High School Training:

Engineers (multiple areas)

For more information on these and other occupations related to this pathway, visit

<http://careerbridge.wa.gov/>



Edmonds SD Career and
Technical Education

Aerospace Manufacturing Pathway Courses and Descriptions

Pathway Courses	Grades	Length	EWHS	MHS	LHS	MTHS	SLHS
IAR121/122 Manufacturing Innovations [^]	9-12	1 credit, Full year				✓	
VOC147/148 Applied Engineering and Manufacturing*	10-12	2 credits, Full year	ID	ID	✓	ID	ID
VOC151/152 Applied Engineering/Manufacturing, Adv.	11-12	1 credit, Full year			✓		

✓ *Course is available at this school* ID = Intra-District Course * College Credit Available ^ Recommended but not required

MANUFACTURING INNOVATIONS

IAR121/122 (Year)

Credits: 1.0

Grades 9-12

Equivalency: 1.0 credit Art

Students will be introduced to manufacturing and fabrication careers and skills through a variety of innovative projects. Students will learn and apply various design and manufacturing methods including casting, 3-D printing, multi-part mold-making, metal and plastics fabrication, soldering, and welding to produce a variety of products including sculptures, jewelry, machine parts, and packaging.

APPLIED ENGINEERING AND MANUFACTURING (Intra-District)

VOC147/148 (Yearlong, 2 period block)

Credits: 2.0

Grades 10-12

Intra-District Program: Located at Lynnwood HS, period 5/6 block class. Students from all District high schools may attend this program. District bus transportation is provided. Shared Student Form required for registration.

Equivalency: 1 credit English, 1 credit Third Year Math, and/or 1 credit Science

Learn to work with various manufacturing materials, safely operate aerospace machinery, use precision measurement tools, read blueprints, and apply accurate riveting practices by completing the Boeing Company's industry recognized **Core Plus** manufacturing curriculum. Students will gain an understanding of aerospace and other manufacturing careers, and develop a competitive edge in interviewing and applying for manufacturing jobs in our region. **College Credit Available.**



ADVANCED APPLIED ENGINEERING AND MANUFACTURING

VOC151/152 (Year)

Credits: 1.0

Grades 11-12

Prerequisite: Applied Engineering and Manufacturing

This class builds upon the skills learned in Applied Engineering and Manufacturing and provides students additional Core Plus training and certifications desired by Manufacturing employers in our region.



Architectural Design/CAD Pathway



The Architectural Design/CAD pathway is a great program for students who dream of designing and creating the structures we use every day. **Students who complete 2 credits in this pathway will meet state ELA and Math Graduation Pathway requirements, and...**

- Develop design skills using drawing and Computer Aided Drafting (CAD) techniques
- Create “real world” architectural and mechanical plans, drawings and designs.
- Participate in regional, state, national and international design competitions.
- Earn college credits which can be applied directly into partner college programs.
- Meet Art requirements through their Pathway courses.

This CTE Pathway is a great fit for students who...

- ✓ Enjoy designing things, sketching and drawing.
- ✓ Enjoy projects that allow for personal creativity and self-expression.
- ✓ Enjoy work that includes practical, hands-on problems and solutions.
- ✓ Are interested in architecture, engineering, construction, drafting or other careers involving design.

Start Your Pathway with 2 or more credits of Pathway courses

Then, After You Have Finished High School...

Finally, Begin Your Career!

1. Choose Your Pathway Courses

To meet your Graduation Pathway requirement through this CTE Pathway, **select 2 credits of courses from the following options:**

(See the *Architectural Design Pathway Courses and Descriptions* table to identify the courses available for your high school)

- IAR221/222 Design/CAD 1 (1 cr.) and
 - IAR231/232 Design/CAD 2 (1 cr.)
- or
- VOC111/112 Design/CAD 1&2 (2 cr.)

2. Pursue Advanced courses if you're interested.

While not required to meet your Graduation Pathway requirement, consider taking the following advanced class to further your learning:

- VOC211/212 Green Building Architectural Design (2 cr.)

3. Build Your Education Plan

Using the *CTE Pathways Planning Worksheet* on page 3 of this Planning Guide, incorporate your selected course into your 4-Year High School Education Plan.

Apply college credits earned in this pathway directly into these partner college programs:

Lake WA Institute of Technology

- Mechanical Design Technology Certificate and AAS-T Programs
- AutoCAD Certificate Program

Continue your training in another college program such as:

Lake WA Institute of Technology

- Architectural Technology Certificate and AAS-T Programs

University of Washington

- Engineering
- Architecture

Washington State University

- Engineering
- Architecture

Jobs you can get with 2-Years Post-High School Training:

Architectural and Civil Drafters
Electrical and Electronics Drafters
Mechanical Drafters
Engineering Technicians
Civil Engineering Technicians
Surveying Technicians

Jobs you can get with 4 or more Years Post-High School Training:

Architects
Interior Designers
Landscape Architects
Surveyors
Engineering (All areas)

For more information on these and other occupations related to this pathway, visit

<http://careerbridge.wa.gov/>



Architectural Design/CAD Pathway Courses and Descriptions

Pathway Courses	Grades	Length	EWHS	MHS	LHS	MTHS	SLHS
IAR221/222 Design/CAD 1*	9-12	1 credit, Full year	✓	✓			
IAR231/232 Design/CAD 2*	10-12	1 credit, Full year	✓	✓			
VOC111/112 Design/CAD 1-2*	10-12	2 credits, Full year			ID	ID	ID
VOC211/212 Green Building Architectural Design	10-12	2 credits, Full year	✓	ID	ID	ID	ID

✓ *Course is available at this school* ID = Intra-District Course * College Credit Available

DESIGN FOR THE BUILT ENVIRONMENT/CAD 1

IAR221/222 (Year)

Credits: 1.0

Grades 9-12

Equivalency: 1 credit Art

Learn techniques and methods of drafting as a universal language to convey ideas via drawings and technical plans. Students will create a set of house plans along with a scale model and/or a perspective rendering. Learn about construction codes, techniques, materials, and methods. **College Credit Available.**

DESIGN FOR THE BUILT ENVIRONMENT/CAD 2

IAR231/232 (Year)

Credits: 1.0

Grades 10-12

Equivalency: 1 credit Art

Prerequisite: Design/CAD 1

Discover the phases of the design and construction process, from site analysis, structural design, drafting and building codes. Design projects using both board and computer aided design (CAD). **College Credit Available.**



DESIGN FOR THE BUILT ENVIRONMENT/CAD 1-2 (Intra-District)

VOC 111/112 (Yearlong, 2 period block)

Credits: 2.0

Grades 10-12

Intra-District Program: Located at Edmonds Woodway HS, period 1/2 block class. Students from all District high schools may attend this program. District bus transportation is provided. Shared Student Form required for registration.

Equivalency: 1 credit Art

Prerequisite: Algebra 1

Explore your interest in architecture, engineering, the building trades, technical illustration, interior design, or an profession which demands knowledge of technical drawing. Learn techniques and methods of drafting as a universal language used to convey thoughts and ideas. Build models, illustrate and render projects using both board and computer aided design (CAD). An overview of construction codes, techniques, materials and methods are also presented. **College Credit Available.**

GREEN BUILDING ARCHITECTURAL DESIGN (Intra-District)

VOC211/212 (Yearlong, 2 period block)

Credits: 2.0

Grades 11-12

Intra-District Program: Located at Edmonds Woodway HS, period 1/2 block class. Students from all District high schools may attend this program. District bus transportation is provided. Shared Student Form required for registration.

Equivalency: 1 credit Art

Prerequisite: Algebra 1, Design/CAD 2

Explore standards and applications used in designing efficient and sustainable built environments. Classroom atmosphere simulates a "real world" office environment in which projects are programmed, designed, presented, critiqued, revised, and developed into plans for construction, production, and presentation.





ASL/Sign Language Interpreter Pathway

The ASL/Sign Language Interpreter Pathway is a great program for students who have an interest in learning to communicate with our deaf community. **Students who complete 2 credits in this pathway will meet state ELA and Math Graduation Pathway requirements, and...**

- Develop proficiency in American Sign Language (ASL).
- Practice ASL communication and interpreting skills at school and deaf community events.
- Earn college credits which can be applied to college degree programs.
- Meet World Language credit requirements for 4-Year College/University admissions.

This CTE Pathway is a great fit for students who...

- ✓ Enjoy helping and working with people.
- ✓ Are good listeners and communicators.
- ✓ Enjoy being creative, expressive and imaginative.
- ✓ Have an interest in learning languages different than their own.
- ✓ Are interested in understanding deaf culture and interacting with the deaf community.

Start Your Pathway with 2 or more credits of Pathway courses

Then, After You Have Finished High School...

Finally, Begin Your Career!

1. Choose Your Pathway Courses

To meet your Graduation Pathway requirement through this CTE Pathway, **select the following 2 credits of courses:**

(See the *ASL Pathway Courses and Descriptions* table to identify the courses available for your high school)

- FLA101/102 ASL 1 (1 cr.)
- FLA201/202 ASL 2 (1 cr.)

2. Pursue Advanced courses if you're interested

While not required to meet your Graduation Pathway requirement, consider taking the following advanced classes to further your learning:

- FLA301/302 ASL 3 (1 cr.)
- FLA351/352 ASL 3 (1 cr.)
- FLA401/402 ASL 4 (1 cr.)
- FLA451/452 ASL 4 (1 cr.)

3. Build Your Education Plan

Using the *CTE Pathways Planning Worksheet* on page 3 of this Planning Guide, incorporate your selected courses into your 4-Year High School Education Plan.

Apply college credits earned in this Pathway directly into one of these partner college programs:

Lake WA Institute of Technology

- ASL 1 and 2 fulfill Associate Degree Humanities credit requirements.

Continue your training in another college program such as:

Spokane Community College

- Interpreter Training Certificate and Degree Programs

University of Washington

- College of Arts and Sciences: American Sign Language

Gallaudet University, Wash. DC

- American Sign Language and Deaf Studies Certificate and Degree programs

While ASL Skills are used in every profession, there are some jobs where Sign Language Interpretation is the focus of the work. The following are some of those jobs:

Jobs you can get with 2-Years Post-High School Training:

Sign Language Interpreter

Jobs you can get with 4 or more Years Post-High School Training:

Sign Language Interpreter
American Sign Language Instructor

For more information on these and other occupations related to this pathway, visit

<http://careerbridge.wa.gov/>



Edmonds SD Career and
Technical Education

ASL/Sign Language Interpreter Pathway Courses and Descriptions

Pathway Courses	Grades	Length	EWHS	MHS	LHS	MTHS	SLHS
FLA101/102 American Sign Language (ASL) 1*	9-12	1 credit, Full year	✓	✓	✓	✓	
FLA201/202 American Sign Language (ASL) 2 *	10-12	1 credit, Full year	✓	✓	✓	✓	
FLA301/302 American Sign Language (ASL) 3	11-12	1 credit, Full year		25-26	✓	✓	
FLA351/352 American Sign Language (ASL) 3	11-12	1 credit, Full year	✓				
FLA401/402 American Sign Language (ASL) 4	11-12	1 credit, Full year		26-27	✓	✓	
FLA451/452 American Sign Language (ASL) 4	11-12	1 credit, Full year	✓				

✓ *Course is available at this school*

* *College Credit Available*

AMERICAN SIGN LANGUAGE 1

FLA101/102 (Year)

Credits: 1.0

Grades 9-12

Equivalency: 1 credit World Language

This course is designed to introduce students to the basic concepts of American Sign Language. Students will gain fluency by engaging in dialogues and learning activities that utilize the target language. This course focuses on vocabulary development, basic conversational strategies, grammatical features, and an exploration of Deaf culture. The student will demonstrate proficiency through receptive and expressive class activities. Attending Deaf events are required each semester. **College Credit Available.**



AMERICAN SIGN LANGUAGE 2

FLA201/202 (Year)

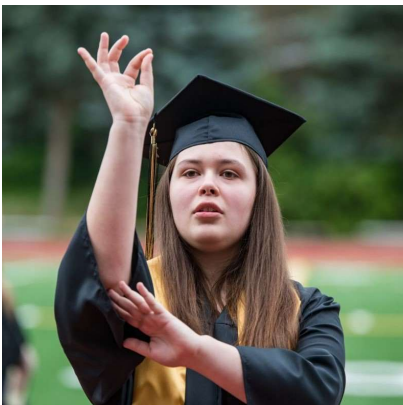
Credits: 1.0

Grades 10-12

Equivalency: 1 credit World Language

Prerequisite: ASL 1

Build upon concepts learned in ASL 1, including vocabulary development, basic conversational strategies, grammatical features and exploration of Deaf culture. Class performances and outside attendance at cultural events are required for this course. **College Credit Available.**



AMERICAN SIGN LANGUAGE 3

FLA301/302 (Year);

EWHS only: FLA351/352 Honors (Year)

Credits: 1.0

Grades 11-12

Equivalency: 1 credit World Language

Prerequisite: ASL 2

This course will also explore sensitive cultural issues related to deafness. An ability to sustain a conversation using ASL is a prerequisite for this section. Course emphasis will be placed on conceptual development of expressive ability. Students will start to develop an interpreter portfolio that can be used in applying to an interpreter training program as well as exploring other ASL related careers in depth. Progress will be demonstrated through performance-based activities including, but not limited to quizzes, discussion groups, skits, cultural activities, presentations, and written work. Class performance and outside attendance at cultural events are required for this course.

AMERICAN SIGN LANGUAGE 4

FLA401/402 (Year);

EWHS only: FLA451/452 Honors

Credits: 1.0

Grades 11-12

Equivalency: 1 credit World Language

Prerequisite: ASL 3

This course is a continuation of 3rd year ASL. It includes a review of the grammar essentials with the emphasis on building vocabulary, conversational skills, and introduction to literature, including drama, prose, and poetry. There is a possibility of community service and job shadowing. There will also be a basic understanding of ethics in interpreting for the Deaf. Student's expressive skills are evaluated through the use of videotape in which the students sign vocabulary, dialogues, copy-sign and tell stories. Students complete self-evaluations on receptive and expressive skills, including translations, ASL dialogues, narratives, and stories. Class performance and outside attendance at cultural events are required for this course.



Automotive Technology Pathway

The Automotive Technology Pathway is a great program for students who have an interest in maintaining and repairing the vehicles we use every day. **Students who complete 2 credits in this pathway will meet state ELA and Math Graduation Pathway requirements, and...**

- Obtain industry recognized Automotive Service Excellence (ASE) certifications.
- Learn by working on actual vehicles in an automotive shop environment.
- Earn college credits which can be applied directly into partner college programs.
- Participate in skill competitions and leadership events through Skills USA.
- Meet English and/or 3rd year Science requirements through their Pathway courses.

This CTE Pathway is a great fit for students who...

- ✓ Enjoy projects where they work with their hands and use tools.
- ✓ Enjoy learning by assembling, taking apart, and fixing things.
- ✓ Feel comfortable in a shop environment.
- ✓ Have an interest in mechanical work and the Automotive Technology profession.

Start Your Pathway with 2 or more credits of Pathway courses

Then, After You Have Finished High School...

Finally, Begin Your Career!

1. Choose Your Pathway Courses

To meet your Graduation Pathway requirement through this CTE Pathway, **select the following 2 credit intra district course:**

- VOC327/328 Automotive Technology (2 cr.)

2. Pursue Advanced options if you're interested.

While not required to meet your Graduation Pathway requirement, consider taking the following advanced class to further your learning:

- VOC336/337 Automotive Technology, Advanced (2 cr.)

3. Build Your Education Plan

Using the *CTE Pathways Planning Worksheet* on page 3 of this Planning Guide, incorporate your selected courses into your 4-Year High School Education Plan.

Apply college credits earned in this Pathway directly into these partner college programs:

Lake WA Institute of Technology

- Auto Repair Technician Certificate program
- General Service Technician Certificate program

Shoreline Community College

- General Service Technician program.
- Honda, GM, and Toyota AAS programs

Continue your training in another college program such as:

Universal Technical Institute

- Automotive Service Technician Training program

Jobs you can after graduation with this High School training:

Aircraft Assemblers
Tire Repairer and Changers

Jobs you can get with 2-Years Post-High School Training:

Automotive Service Technicians and Mechanics
Bus and Truck Mechanics
Aircraft Mechanics and Service Technicians

Jobs you can get with 4 or more Years Post-High School Training:

Engineers (multiple areas)

For more information on these and other occupations related to this pathway, visit

<http://careerbridge.wa.gov/>



Edmonds SD Career and Technical Education

Auto Technology Pathway Courses and Descriptions

Pathway Courses	Grades	Length	EWHS	MHS	LHS	MTHS	SLHS
IAR110 Auto Basics*	9-12	.5 credit, Semester		✓			
VOC327/328 Automotive Technology*	10-12	2 credits, Full year	ID	✓	ID	ID	ID
VOC336/337 Automotive Technology, Advanced*	11-12	2 credits, Full year	ID	✓	ID	ID	ID

✓ *Course is available at this school* ID = Intra-District Course * College Credit Available

AUTOMOTIVE BASICS

IAR110 (Semester)

Credits: .5

Grades 9-12

In this introductory course, students gain an understanding of today's automobile including principles of operation, automotive terminology, and consumer information on repairs and purchasing. Perform basic maintenance and minor repairs. Classroom work will be supplemented with lab sessions covering tool usage and miscellaneous hands-on projects. **College Credit Available.**

AUTO TECHNOLOGY

(Intra-District)

VOC327/328 (Yearlong, 2 period block)

Credits: 2.0

Grades 10-12

Intra-District Program: Located at Meadowdale HS, period 1/2 block or 5/6 block class. Students from all District high schools may attend this program. District bus transportation is provided. Shared Student Form required for registration.

Equivalency: 1 credit English and/or Science

Learn about automotive systems and their relationships, theory, component identification, and diagnosis. This class connects with community college programs which offer further professional training leading to a career as an Automotive Technician. **College Credit Available.**



AUTO TECHNOLOGY, ADVANCED

(Intra-District)

VOC336/337 (Yearlong, 2 period block)

Credits: 2.0

Grades 11-12

Intra-District Program: Located at Meadowdale HS, period 1/2 block or 5/6 block class. Students from all District high schools may attend this program. District bus transportation is provided. Shared Student Form required for registration.

Equivalency: 1 credit Science or Third Year Math

Prerequisite: Automotive Technology

This class covers automotive electronics, brakes, engine performance, steering and suspension, engine computer control systems and automotive diagnostics. Students may earn industry recognized ASE Certifications and participate in leadership competitions through SKILLS USA. **College Credit Available.**





Biotechnology Pathway

The Healthcare Professions Pathway is a great program for students interested in conducting scientific research in a medical lab setting. **Students who complete 2 credits in this pathway will meet state ELA and Math Graduation Pathway requirements, and...**

- Discover how Biotechnology is helping address global health and environmental issues.
- Develop skills and techniques used in research and medical laboratories.
- Explore career opportunities available within the biotechnical research profession.
- Earn college credits which can be applied directly into partner college programs.
- Meet 3rd Year Science requirements through their Pathway courses.

This CTE Pathway is a great fit for students who...

- ✓ Enjoy working with people as part of a team.
- ✓ Have an eye for detail and precision in their work.
- ✓ Are curious and enjoy solving problems.
- ✓ Have good math and science skills.

Start Your Pathway with 2 or more credits of Pathway courses

Then, After You Have Finished High School...

Finally, Begin Your Career!

1. Choose Your Pathway Courses

To meet your Graduation Pathway requirement through this CTE Pathway, **select the following 2 credits of courses:**

(See the Biotechnology Pathway Courses and Descriptions table to identify the courses available for your high school)

- SC1424/425 Biotechnology (1 cr.) and
- SC1408/409 Anatomy/Physiology (1 cr.)
- PHE032/033 Sports Medicine (1 cr.)

2. Build Your Education Plan

Using the *CTE Pathways Planning Worksheet* on page 3 of this Planning Guide, incorporate your selected courses into your 4-Year High School Education Plan.

Apply college credits earned in this Pathway directly into these partner college programs:

Shoreline Community College

- Biotechnology Lab Specialist Certificate and Degree programs
- Essentials of Biomanufacturing Certificate program

Continue your training in another college program such as:

University of Washington

- Bioengineering
- Health Science

Washington State University

- Bioengineering

Jobs you can get with 2-Years Post-High School Training:

Biotechnology Lab Specialist
Biomanufacturing Technician

Jobs you can get with 4 or more Years Post-High School Training:

Biochemist
Biomedical Engineer
Environmental Engineer
Forensic Scientist
Microbiologist
Quality Control Analyst
Research Scientist

For more information on these and other occupations related to this pathway, visit

<http://careerbridge.wa.gov/>



Edmonds SD Career and Technical Education

Biotechnology Pathway Courses and Descriptions

Pathway Courses	Grades	Length	EWHS	MHS	LHS	MTHS	SLHS
SCI424/425 Biotechnology*	10-12	1 credit, Full year		✓	✓	✓	
SCI408/409 Anatomy & Physiology*	11-12	1 credit, Full year		✓	✓	✓	
PHE032/033 Sports Medicine*	10-12	1 credit, Full year	✓	✓	✓	✓	

✓ *Course is available at this school*

* *College Credit Available*

BIOTECHNOLOGY

SCI424/425 (Year)

Credits: 1.0

Grades 10-12

Equivalency: 1 credit Lab Science

Prerequisite: Biology and completion of, or concurrent enrollment in, Chemistry.

Explore topics such as DNA analysis, genetic engineering and stem cells, as well as biotechnology related to medicine, global health, environmental issues and bioethics. Participate in hands-on lab experience to develop skills and techniques that are typical of research and medical laboratories. Complete a year-long biotechnology project and participate in the regional *Bio Expo* Science Fair. **College Credit Available.**



ANATOMY & PHYSIOLOGY

SCI408/409 (Year)

Credits: 1.0

Grades 11-12

Equivalency: 1 credit Lab Science

Prerequisite: Completion of or concurrent enrollment in Biology.

Gain basic information regarding the chemistry and organization of living matter needed to understand cellular, tissue and organ functions. Study the structure and physiology of the major organ systems and perform dissections. **College Credit Available.**

SPORTS MEDICINE

PHE032/033 (YR)

Credits: 1.0

Grades 10-12

Equivalency: .25 credit Health or .5 PE

Study health, fitness, anatomy, physiology, injury treatment, injury response, and nutrition. First Aid, CPR, athletic injury prevention, care and rehabilitation and emergency procedures will also be taught. *Students enrolled in this class are required to register for Field Experience (PHE037/038).* **College Credit Available.**

Business, Marketing, and IT Pathway



The Business, Marketing and IT Pathway is a great program for students with interest in the world of business, finance, technology, and marketing. **Students who complete 2 credits in this pathway will meet state ELA and Math Graduation Pathway requirements, and...**

- Earn industry recognized Microsoft Office Certification through IT Academy courses.
- Earn college credits which can be applied directly into partner college programs.
- Have access to employment and internship opportunities in our community.
- Have opportunity to participate in leadership events through DECA.

This CTE Pathway is a great fit for students who...

- ✓ Enjoy helping, leading and working with people.
- ✓ Are comfortable working with computers and technology.
- ✓ Enjoy organizing and planning activities or events.
- ✓ Have an interest in working in a business environment and pursuing continued training in Business, Finance, or Marketing.

Start Your Pathway with 2 or more credits of Pathway courses

Then, After You Have Finished High School...

Finally, Begin Your Career!

1. Choose Your Pathway Courses

To meet your Graduation Pathway requirement through this CTE Pathway, **select 2 credits of courses from the following options:**

(See the Business/Marketing Pathway Courses and Descriptions table to identify the courses available for your high school)

- BUS100 Accounting 1 (.5 cr.)
- BUS200 Accounting 2 (.5 cr.)
- BUS334 Business Law (.5 cr.)
- COM100 IT Academy 1 (.5 cr.)
- COM116 Digital Tools (.5 cr.)
- COM180 Computer Sci Found (.5 cr.)
- COM195/196 AP CS Principles (1.0 cr.)
- COM200 IT Academy 2 (.5 cr.)
- COM206/207 AP CS A (1.0 cr.)
- HEC315 Personal Finance (.5 cr.)
- IBB401/402 IB Business SL (1 cr.)
- IBB403/404 IB Business HL (1 cr.)
- MAR400 Economics (.5 cr.)
- MAR410 Marketing Essentials (.5 cr.)
- MAR420 Sales & Advertising (.5 cr.)
- MAR430 Entrepreneurship (.5 cr.)
- MAR460 Retail Store (.5 or 1.0 cr.)
- MAR465 Sports/Ent. Mktg. (.5 cr.)
- MAT365/366 Financial Algebra (1 cr.)
- MAT368/369 Financial Algebra/Business Math (CHS)

2. Build Your Education Plan

Using the *CTE Pathways Planning Worksheet* on page 3 of this Planning Guide, incorporate your selected courses into your 4-Year High School Education Plan.

Apply college credits earned in this Pathway directly into these partner college programs:

Edmonds College

- Accounting certificate and degree programs

Bellevue College

- Business Technology and Marketing Management certificate and degree programs.

Continue your training in another college program such as:

Central Washington University @ Edmonds CC

- Information Technology and Administrative Management

Other Regional College and University 4-Year Degree programs

- Accounting
- Business Administration
- Information Technology
- Marketing

Jobs you can get with 2-Years Post-High School Training:

Adjusters
Bookkeepers
Medical Secretaries
Retail Salesperson
Sales/Marketing Associate

Jobs you can get with 4 or more Years Post-High School Training:

Budget Analysts
Certified Public Accountants
Business Managers
Finance Directors
Marketing Managers
Sales Managers

For more information on these and other occupations related to this pathway, visit

<http://careerbridge.wa.gov/>



Edmonds SD Career and Technical Education

Business, Marketing and IT Pathway Courses and Descriptions

Pathway Courses	Grades	Length	EWHS	MHS	LHS	MTHS	SLHS
BUS100 Accounting 1*	10-12	.5 credit, Semester				✓	
BUS200 Accounting 2*	10-12	.5 credit, Semester				✓	
BUS334 Business Law	10-12	.5 credit, Semester				✓	
COM100 IT Academy 1*	9-12	.5 credit, Semester	✓		✓	✓	
COM116 Digital Tools	9-12	.5 credit, Semester	✓		✓	✓	
COM180 Computer Science Foundations	9-12	.5 credit, Semester	✓		✓	✓	
COM195/196 AP Computer Science Principles*	10-12	1 credit, Full year				✓	
COM200 IT Academy 2*	10-12	.5 credit, Semester	✓		✓	✓	
COM206/207 AP Computer Science A*	10-12	1 credit, Full year		✓	✓	✓	
COM557/558 Cybersecurity*	10-12	1 credit, Full year	✓				
HEC315 Personal Finance	11-12	.5 credit, Semester	✓	✓	✓	✓	
IBB401/402 IB Business SL	11-12	1 credit, Full year	✓				
IBB403/404 IB Business HL	12	1 credit, Full year	✓				
MAR400 Economics*	9-12	.5 credit, Semester		✓			
MAR410 Marketing Essentials*	9-12	.5 credit, Semester	✓	✓	✓	✓	
MAR420 Sales and Advertising*	10-12	.5 credit, Semester			✓		
MAR430 Entrepreneurship	10-12	.5 credit, Semester			✓		
MAR460 Retail Store*	10-12	.5 credit, Semester	✓	✓	✓	✓	
MAR465 Sports and Entertainment Marketing*	9-12	.5 credit, Semester	✓			✓	
MAT365/366 Financial Algebra*	11-12	1 credit, Full year	✓				
MAT368/369 Financial Algebra/Business Math (CHS)*	11-12	1 credit, Full year		✓	✓	✓	

✓ *Course is available at this school* * *College Credit Available*

ACCOUNTING 1

BUS100 (Semester)

Credits: .5

Grades 10-12

Equivalency: .5 credit Personal Finance

Learn to manage financial records for business and personal activities such as financial reporting and reconciling bank statements. Accounting is highly recommended for all students interested in a career in Business or Marketing. **College Credit Available.**

ACCOUNTING 2

BUS200 (Semester)

Credits: .5

Grades 10-12

Prerequisites: Accounting 1

Learn to manage financial records for a corporation by recording business transactions, preparing financial statements, managing payroll, calculating taxes and operating a computerized accounting system. **College Credit Available.**



BUSINESS LAW

BUS334

(Semester)

Credits: .5

Grade Level: 10 – 12

Learn about ethics, our legal system and your personal rights and responsibilities. Topics will include criminal and civil law, contracts, insurance, real property, and employment rights.

IT ACADEMY 1

COM100 (Semester)

Credits: .5

Grades 9-12

Develop proficiency with Microsoft Word and PowerPoint software for school and workplace. Students may earn Microsoft Office Specialist (MOS) Certification. **College Credit Available.**

DIGITAL TOOLS

COM116 (Semester)

Credits: .5

Grades 9 – 12

This course provides students with hands-on experience using today's technology. Upon completion of this course, students will be able to demonstrate an entry-level proficiency using the Microsoft Office Suite (PowerPoint, Word, Excel, and Access), Internet use and misuse, digital design, career exploration, and an introduction to HTML. Students will become more efficient and effective utilizing the skills necessary to be academically and professionally successful.

COMPUTER SCIENCE FOUNDATIONS

COM180 (Semester)

Credits: .5

Grade Level: 9 – 12

Learn how computers operate and how new computing technologies are invented. Explore the roles we play as consumers, users and developers of technology. Try out computer tools to create games and animations.

AP COMPUTER SCIENCE PRINCIPLES

COM195/196 (Year)

Credits: 0.5

Grade Level: 10 - 12

Equivalency: 1.0 credit 3rd Year Math

Use current technology for self-expression and problem solving, programming, abstractions, algorithms, large data sets, the Internet, and cybersecurity concerns will be covered. Students prepare for the AP Computer Science Principles exam. **College Credit Available.**

IT ACADEMY 2

COM200 (Semester)

Credits: .5

Grades 10-12

Develop proficiency with Microsoft Excel and Access software for school and workplace. Students may earn Microsoft Office Specialist (MOS) Certification.

College Credit Available.



AP COMPUTER SCIENCE A

COM206/207 (Year)

Credits: 0.5 per semester

Grade Level: 10 - 12

Equivalency: 1.0 credit 3rd Year Math or 1.0 credit Science

Engage in a progression of programming instruction and challenges including common software development and engineering practices. Investigate fundamental programming concepts then focus on object-oriented programming using the Java programming language. Students prepare for the AP Computer Science A exam. **College credit available.**

CYBERSECURITY

COM557/558 (Year)

Credits: 1.0

Grade Level: 10 – 12

Learn principles of cybersecurity, explore emerging technologies, examine threats and protective measures, and investigate career opportunities in the field of cybersecurity. Topics installation, configuration and securing of networks and devices; and legal and ethical issues related to computing behavior. **College Credit Available.**

PERSONAL FINANCE

HEC315 (Semester)

Credits: 0.5

Grade Level: 11-12

Gain the skills and knowledge needed to confidently approach the challenges of managing personal finances. Topics include financial responsibility and decision making, personal income, taxes, savings, investments, banking, credit, debt, insurance, and purchasing goods and services. Students also complete a career exploration and develop employment seeking skills. **Fulfills district graduation requirement.**

IB BUSINESS SL

IBB401/402 (Year)

Credits: 1.0

Grade Level: 11 – 12

Gain a holistic view of the world of business: explore business issues from different cultural perspectives; think critically about individual and organizational behavior; learn to make informed business decisions; discover how businesses adapt to rapid change; and study ethical business practices. Students are expected to take the IB Standard level exam and participate in DECA student leadership organization. This course satisfies the 6th subject IB diploma requirement.

IB BUSINESS HL

IBB403/404 (Year)

Credits: 1.0

Grade Level: 12

Prerequisite: IB BUSINESS SL (IBB401/402)

Students will deepen their understanding of topics covered in IB Business SL and develop a knowledge of Business Strategy. Students are expected to take the IB Higher Level exam and participate in DECA student leadership organization. This course satisfies the 6th subject IB diploma requirement.

ECONOMICS

MAR400 (Semester)

Credits: 0.5

Grade Level: 9 – 12

Economics deals with the way individuals, households, firms, industries and governments choose to employ their talents and resources to best satisfy their needs and desires. Students learn economic concepts and gain understanding of the US economy. **College Credit Available.**

MARKETING ESSENTIALS

MAR410 (Semester)

Credits: 0.5

Grade Level: 9 – 12

Learn about the role marketing plays in our free enterprise system, and why some companies are successful while others fail. Make yourself a valuable employee by learning the Steps to Selling, advertising and public relations skills. DECA participation is recommended. **College Credit Available.**

SALES AND ADVERTISING

MAR420 (Semester)

Credits: 0.5

Grade Level: 10 – 12

Discover how to effectively advertise a product or service by reviewing successful promotions of the present and past. Students develop sales campaigns and learn effective presentation skills. **College Credit Available.**

ENTREPRENEURSHIP

MAR430 (Semester)

Credits: 0.5

Grade Level: 10 – 12

Prerequisite: Successful Completion of Marketing Essentials

Discover what it takes to run your own business. Observe life in a corporation and create and present a unique business plan. This class is recommended for students interested in continuing their DECA involvement. **College Credit Available.**

RETAIL STORE

MAR460 (Semester)

Credits: 0.5 per semester. May be repeated for 1.0 credit.

Grade Level: 10 - 12

Prerequisite: Successful Completion of Marketing Essentials

Gain valuable experience by managing and operating the school store and learn how a business can increase profit and sales productivity. Students plan, organize and implement all components of the student store including ordering, bookkeeping, and personnel management and supervision. May be repeated for credit. **College Credit Available.**

SPORTS AND ENTERTAINMENT MARKETING

MAR465 (Semester)

Credits: .5

Grade Level: 9 – 12

Learn the basic principles of Marketing and Economics with a special emphasis on sports and entertainment. Create a sample Press Kit to use when applying for Sports and Entertainment positions. **College Credit Available.**

FINANCIAL ALGEBRA

MAT365/366 (Year)

Credits: 0.5 per semester

Grade Level: 11 – 12

Equivalency: 1.0 credit 3rd Year Math

Prerequisite: Completion of Algebra 1 and Geometry OR concurrent enrollment in Geometry.

Equipment needed: A graphing calculator (TI-83 Plus, or better).

This class may fulfill the third-year math requirement needed for graduation if parent/guardian and school approval are obtained. College credit may be available. In this math course, students increase their math understanding and skills by working with real-world financial situations and problems. Financial Algebra engages students as they grow in mathematical maturity and expertise throughout their high school years which will help them to succeed in the new global economy. Topics include: Stock Market, Banking Services, Income Taxes, Independent Living, Consumer Credit, Preparing Budgets, and Employment Basics. **This course offers College Credit through Bellevue College as a CTE Dual Credit class.**



FINANCIAL ALGEBRA/BUSINESS MATH (CHS)

MAT368/369 (Year)

Credits: 0.5 per semester

Grade Level: 11 – 12

Equivalency: 1.0 credit 3rd Year Math

Prerequisite: Completion of Algebra 1 and Geometry OR concurrent enrollment in Geometry.

Equipment needed: A graphing calculator (TI-83 Plus, or better).

This class may fulfill the third-year math requirement needed for graduation if parent/guardian and school approval are obtained. College credit may be available. In this math course, students increase their math understanding and skills by working with real-world financial situations and problems. Financial Algebra engages students as they grow in mathematical maturity and expertise throughout their high school years which will help them to succeed in the new global economy. Topics include: Stock Market, Banking Services, Income Taxes, Independent Living, Consumer Credit, Preparing Budgets, and Employment Basics. **This class offers College Credit through Edmonds College as a College in High School course.**





Carpentry and Construction Trades Pathway

The Carpentry and Construction Pathway is a great program for students who have an interest in building the structures we use every day. **Students who complete 2 credits in this pathway will meet state ELA and Math Graduation Pathway requirements, and...**

- Earn industry recognized NCCER Carpentry and OSHA 10 Certifications.
- Learn by working on an actual construction site building residential homes.
- Receive preferred entry into the CITC Carpentry Apprenticeship program.
- Meet 3rd year Math or Geometry requirements through their Pathway course.

This CTE Pathway is a great fit for students who...

- ✓ Enjoy projects where they work with their hands and use tools.
- ✓ Enjoy learning through building and repairing things.
- ✓ Feel comfortable working outside on a construction site.
- ✓ Have an attention to detail and precision in their work.
- ✓ Are interested in getting a Construction related job after high school or continuing training in the Construction field.

Start Your Pathway with 2 or more credits of Pathway courses

Then, After You Have Finished High School...

Finally, Begin Your Career!

1. Choose Your Pathway Courses

To meet your Graduation Pathway requirement through this CTE Pathway, **select the following 2 credit Intradistrict course:**

- VOC615/616 Carpentry and Construction (2 cr.)

2. Pursue Advanced options if you're interested.

While not required to meet your Graduation Pathways requirement, consider taking the following advanced class to further your learning:

- VOC638/639 Carpentry and Construction, Advanced (2 cr.)

3. Build Your Education Plan

Using the *CTE Pathways Planning Worksheet* on page 3 of this Planning Guide, incorporate your selected courses into your 4-Year High School Education Plan.

Continue your training on the job by starting your career right out of high school:

- Entry level Laborer or Construction Trades worker

Apply certifications and credits earned in this Pathway directly into our partner Apprenticeship Training program:

Construction Industry Training Council of Washington

- Carpentry Apprenticeship program

Continue your training in another college program such as:

South Seattle Community College

- Multiple Trades Apprenticeship programs available

Edmonds College

- Construction Management Degree program

University of Washington

- Construction Management Degree program

Jobs you can get with Apprenticeship Training:

Carpenter
Cement Mason and Concrete Finisher
Construction Laborer
Drywall Installer
Electrician
Plumber and Pipefitter
Roofer

Jobs you can get with 4 or more years Post-High School Training:

Architects
Civil Engineer
Construction Manager

For more information on these and other occupations related to this pathway, visit

<http://careerbridge.wa.gov/>



Edmonds SD Career and Technical Education

Carpentry and Construction Trades Pathway Courses and Descriptions

Pathway Courses	Grades	Length	EWHS	MHS	LHS	MTHS	SLHS
VOC615/616 Carpentry and Building Construction	10-12	2 credits, Full year	ID	ID	ID	✓	ID
VOC638/639 Carpentry and Building Construction, Adv.	10-12	1 credit, Full year	ID	ID	ID	✓	ID

✓ *Course is available at this school* ID = Intra-District Course * College Credit Available

CARPENTRY AND CONSTRUCTION (Intra-District)

VOC615/616 (Year; 2 Period Block)
High; Periods 3&4 or 5&6)
Credits: 2.0
Grade Level: 10 – 12
Equivalency: 1.0 credit Third Year Math or 1.0 credit Geometry

Intra-District Program: Located at Mountlake HS, period 3/4 block or 5/6 block class. Students from all District high schools may attend this program. District bus transportation is provided. Shared Student Form required for registration.

Prerequisite: Shared Student Form required for registration. (Intra-District Program) Some form of medical coverage is required. (Policies may be purchased through your high school.)

In this first-year course, students develop building construction skills required for entry into apprenticeship training or entry-level jobs in the construction industry. Topics include safety, construction math, orientation to the trades, hand and power tools, blueprints, site layout, framing, and hanging windows and doors. Students will participate in building sheds and other projects on the school campus as part of this course and earn NCCER Core Certification and OSHA Certification useful for future employment. *District bus transportation is provided.*



ADVANCED CARPENTRY AND CONSTRUCTION (Intra-District)

VOC638/639 (Yearlong, 2 period block)
Credits: 2.0
Grade Level: 11 – 12

Intra-District Program: Located at Mountlake HS, period 3/4 block or 5/6 block class. Students from all District high schools may attend this program. District bus transportation is provided. Shared Student Form required for registration.

Prerequisite: Successful completion or Carpentry and Construction, Year One. Some form of medical coverage is also required.

In this second-year course, students continue learning through actual construction projects while also completing studies to obtain NCCER Carpentry Level 1 certification. Topics covered in this advanced course include residential electrical systems and safety, roofing, exterior finishing, cabinet installation, plumbing, and ceiling, joist and roof framing. *District bus transportation is provided.*

Both Carpentry and Construction Year One and Advanced Carpentry and Construction are partnered with the Construction Industry Training Council (CITC) of Washington which will provide preferred consideration into their registered Apprenticeship Programs for students completing this program and obtaining NCCER certification.





Computer Science and Engineering Pathway

The Computer Science and Engineering Pathway is a great program for students interested in using math, science and technology to solve problems. **Students who complete 2 credits in this pathway will meet state ELA and Math Graduation Pathway requirements, and...**

- Use tools, software and equipment used in the Engineering and Computer Science field.
- Participate in skill challenges through Robotics or Technology Student Association clubs.
- Earn college credits which can be applied directly into partner college programs.
- Meet Art, Third Year Math and/or Science requirements through their Pathway courses.

This CTE Pathway is a great fit for students who...

- ✓ Are curious and desire to figure out why and how things work.
- ✓ Enjoy using math, science, and technology to solve problems and improve their world.
- ✓ Enjoy designing and building things.
- ✓ Enjoy developing and analyzing various solutions to problems.
- ✓ Are interested in continuing their education in Engineering, Computer Science or other related STEM fields.

Start Your Pathway with 2 or more credits of Pathway courses

Then, After You Have Finished High School...

Finally, Begin Your Career!

1. Choose Your Pathway Courses:

To meet your Graduation Pathway requirement through this CTE Pathway, **select 2 credits of courses from the following options:**

(See the Computer Science and Engineering Pathway Courses and Descriptions table to identify the courses available for your high school)

- COM180 CS Foundations (.5 cr.)
- COM195/196 AP CS Principles (1 cr.)
- COM206/207 AP Comp. Sci A (1 cr.)
- COM557/558 Cybersecurity (1 cr.)
- ENG405/406 English 12 STEM (1 cr.)
- HEC315 Personal Finance (.5 cr.)
- IAR115/116 Intro to Engineering Design (1 cr.)
- IAR135/136 Principles of Engineering (1 cr.)
- IAR265 Robotics (.5 cr.)
- IAR267/268 Aerospace Engineering (1 cr.)

2. Pursue additional credits if you're interested.

While not required for your Graduation Pathway requirement, consider taking more than 2 credits of courses in this Pathway to further your learning.

3. Build Your Education Plan

Using the *CTE Pathways Planning Worksheet* on page 3 of this Planning Guide, incorporate your selected courses into your 4-Year High School Education Plan.

Apply college credits earned in this Pathway directly into these partner college programs:

Lake WA Institute of Technology

- Engineering Technology

Edmonds College

- Engineering Technology
- Digital Forensics and Cybersecurity
- Computer Information Systems

University of Washington

- Computer Science

Continue your training in another college program such as:

Multiple Regional University programs

- Engineering (multiple areas)
- Computer Science

Jobs you can get with 2-Years Post-High School Training:

Cybersecurity Analyst
Computer Support Specialist
Engineering Technician
PC Support Technician
Web Developer

Jobs you can get with 4 or more Years Post-High School Training:

Aerospace Engineer
Civil Engineer
Computer Programmer
Mechanical Engineer
Software Developer
System Analyst

For more information on these and other occupations related to this pathway, visit

<http://careerbridge.wa.gov/>



Edmonds SD Career and Technical Education

Computer Science and Engineering Pathway Courses and Descriptions

Pathway Courses	Grades	Length	EWHS	MHS	LHS	MTHS	SLHS
COM180 Computer Science Foundations	9-12	.5 credit, Semester	✓		✓	✓	
COM195/196 AP Computer Science Principles*	10-12	1 credit, Full year				✓	
COM206/207 AP Computer Science A*	10-12	1 credit, Full year		✓	✓	✓	
COM557/558 Cybersecurity*	10-12	1 credit, Full year	✓				
ENG416/417 English 12 STEM	12	1 credit, Full year				✓	
HEC315 Personal Finance	11-12	.5 credit, Semester	✓	✓	✓	✓	
IAR115/116 Intro to Engineering Design*	9-12	1 credit, Full year			✓	✓	
IAR135/136 Principles of Engineering*	10-12	1 credit, Full year				✓	
IAR265 Robotics	9-12	.5 credit, Semester	✓		✓	✓	
IAR267/268 Aerospace Engineering	11-12	1 credit, Full year				✓	

✓ *Course is available at this school*

* *College Credit Available*

COMPUTER SCIENCE FOUNDATIONS

COM180 (Semester)

Credits: .5

Grade Level: 9 – 12

Learn how computers operate and how new computing technologies are invented. Explore the roles we play as consumers, users and developers of technology. Try out computer tools to create games and animations.

AP COMPUTER SCIENCE PRINCIPLES

COM195/196 (Year)

Credits: 0.5

Grade Level: 10 - 12

Equivalency: 1.0 credit Third Year Math

Use current technology for self-expression and problem solving: programming, abstractions, algorithms, large data sets, the Internet, and cybersecurity concerns will be covered. Students prepare for the AP Computer Science Principles exam. **College Credit Available.**

AP COMPUTER SCIENCE A

COM206/207 (Year)

Credits: 1.0

Grade Level: 10 - 12

Equivalency: 1.0 credit Third Year Math or 1.0 credit Science

Engage in a progression of programming instruction and challenges including common software development and engineering practices. Investigate fundamental programming concepts then focus on object-oriented programming using the Java programming language. Students prepare for the AP Computer Science A exam. **College Credit Available.**



CYBERSECURITY

COM557/558 (Year)

Credits: 1.0

Grade Level: 10 – 12

Learn principles of cybersecurity, explore emerging technologies, examine threats and protective measures, and investigate career opportunities in the field of cybersecurity. Topics installation, configuration and securing of networks and devices; and legal and ethical issues related to computing behavior. **College Credit Available.**

ROBOTICS

IAR265 (Semester)

Credits: .5

Grade Level: 9 - 12

Equivalency: .25 credit Science

Develop skills in several areas of Robotics, including mechanics, structure, assembly, software programming, sensor electronics and motors. Students will also have the opportunity to participate in Robotics competitions as part of this class.

INTRO TO ENGINEERING DESIGN

IAR115/116 (Year)

Credits: 1.0

Grade Level: 9 - 12

Equivalency: 1.0 credit Art

Learn the strategic steps used by engineers today in the "Engineering Design Process" and practice this design process by developing skills such as teamwork, brainstorming, 2-d and 3-d sketching, and the use of Solid Works 3D CAD software. Students will use an advanced 3-dimensional fast-prototype printer to create actual physical models of their designs. **College Credit Available.**



PRINCIPLES OF ENGINEERING

IA135/136 (Year)

Credits: 1.0

Grade Level: 10 - 12

Equivalency: 0.5 credit Science

Apply principles of science, math, and technology in an introduction to the challenges, tools and disciplines of the field of engineering. Shop machines, computers, engineering software, and precision tools will be combined with challenging texts and classroom instruction. Students complete a culminating project. **College Credit Available.**

AEROSPACE ENGINEERING

IA267/268 (Year)

Credits: 1.0

Grade Level: 11 - 12

Prerequisite: Geometry

Launch into the world of aeronautics, rocketry and aerospace engineering: Students work individually and in teams to solve engineering design problems in aerodynamics, propulsion, space flight, the biology of space science, materials and structures, and flight stability and control.



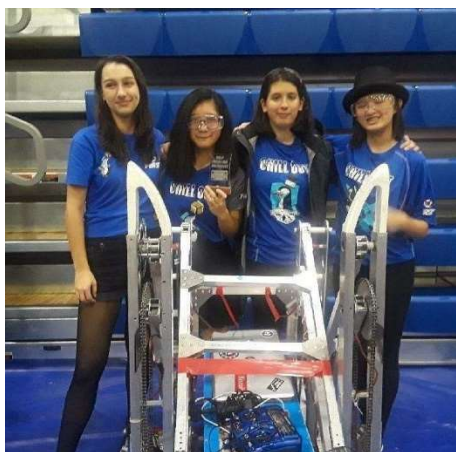
PERSONAL FINANCE

HEC315 (Semester)

Credits: 0.5

Grade Level: 11-12

Gain the skills and knowledge needed to confidently approach the challenges of managing personal finances. Topics include financial responsibility and decision making, personal income, taxes, savings, investments, banking, credit, debt, insurance, and purchasing goods and services. Students also complete a career exploration and develop employment seeking skills. **Fulfills district graduation requirement.**



ENGLISH 12 STEM

ENG416/417 (Year)

Credits: 1.0

Grade Level: 12

Equivalency: 1.0 credit Senior English

The Senior English course for STEM program students. Explore the practices of science research and design, perform a substantive literature review, and conduct an in-depth, student-initiated scientific investigation. Participate in the Central Sound Regional Science and Engineering Fair plus at least one more approved STEM Competition or Showcase of their choice. Completion of summer homework assignment is required prior to the start of Course.





Culinary Arts Pathway

The Culinary Arts Pathway is a great program for students interested in the foods industry where they can prepare various culinary dishes. **Students who complete 2 credits in this pathway will meet state ELA and Math Graduation Pathway requirements, and...**

- Obtain a state food handlers permit.
- Learn by preparing appetizers, entrees and dessert menu items.
- Participate in planning and providing catering projects and activities.
- Earn college credits which can be applied directly into partner college programs.
- Meet their 3rd Year Science requirement through Pathway courses.

This CTE Pathway is a great fit for students who...

- ✓ Enjoy being creative, expressive, and imaginative.
- ✓ Enjoy cooking and learning by working with their hands.
- ✓ Have an attention to detail and precision in their work.
- ✓ Are interested in getting a job in the foods industry after high school or continuing training in the Culinary Arts field.

Start Your Pathway with 2 or more credits of Pathway courses

Then, After You Have Finished High School...

Finally, Begin Your Career!

1. Choose Your Pathway Courses

To meet your Graduation Pathway requirement through this CTE Pathway, **select 2 credits of courses from the following options:**

(See the *Culinary Arts Pathway Courses and Descriptions* table to identify the courses available for your high school)

- PHE301 CTE Health (.5 cr.)
- HEC450 Chef School 1 (.5 cr.)
- HEC457 Chef School 2 (.5 cr.)
- HEC458 Chef School 3 (.5 cr.)
- SCI120/121 Food Science (1 cr.)
- HEC315 Personal Finance (.5 cr.)

2. Pursue additional credits if you're interested.

While not required to meet your Graduation Pathway requirement, consider taking more than 2 credits of courses in this Pathway to further your learning.

3. Build Your Education Plan

Using the *CTE Pathways Planning Worksheet* on page 3 of this Planning Guide, incorporate your selected courses into your 4-Year High School Education Plan.

Apply college credits earned in this Pathway directly into these partner college program:

Edmonds College

- Culinary Arts certificate and ATA/AAS degree programs.

Continue your training in another college program such as:

Lake Washington Institute of Technology

- Culinary Arts certificate and degree Programs

Shoreline Community College

- Nutrition and Food Science AADT program

University of Washington

- Hospitality and Business Management degree program
- Food Science degree program

Jobs you can get with 2-Years Post-High School Training:

Baker
Bartender
Chefs and Head Cooks
Cooks
Food Preparation Workers
Hosts and Hostesses
Waiters/Waitresses

Jobs you can get with 4 or more Years Post-High School Training:

Dietician and Nutritionist
Hospitality Business Administrator
Food Scientist

For more information on these and other occupations related to this pathway, visit

<http://careerbridge.wa.gov/>



Edmonds SD Career and Technical Education

Culinary Arts Pathway Courses and Descriptions

Pathway Courses	Grades	Length	EWHS	MHS	LHS	MTHS	SLHS
PHE301 CTE Health	9-12	.5 credit, Semester	✓		✓	✓	
HEC450 Chef School 1	9-12	.5 credit, Semester	✓	✓	✓	✓	
HEC457 Chef School 2*	9-12	.5 credit, Semester	✓	✓	✓	✓	
HEC458 Chef School 3*	10-12	.5 credit, Semester	✓	✓	✓	✓	
SCI120/121 Food Science*	10-12	1 credit, Full year		✓	✓		
HEC315 Personal Finance	11-12	.5 credit, Semester	✓	✓	✓	✓	

✓ *Course is available at this school* * *College Credit Available*

CTE HEALTH

PHE301 (Semester)

Credits: .5

Grades 9-12

Learn information and strategies for healthful living and responsible decision-making. Topics include both physical and mental health: first aid, nutrition, physical fitness, managing stress, addictions, sexuality education, cancer and communicable diseases (including HIV/AIDS). Students will have opportunity to earn First Aid/CPR/AED Certification.

CHEF SCHOOL 1

HEC450 (Semester)

Credits: .5

Grades 9-12

Chef 1 is an introductory course where students gain hands-on experience in food preparation techniques, kitchen safety, equipment use, nutrition and menu planning. Students will also learn about careers in food related industries and earn their Food Handlers card in this course.

CHEF SCHOOL 2

HEC457 (Semester)

Credits: .5

Grades 9-12

Prerequisite: Chef School 1

Build upon skills and knowledge gained through Chef 1, including advanced food preparation skills, catering projects, competitions, specialized field trips and menu design. **College Credit Available.**

CHEF SCHOOL 3

HEC458 (Semester)

Credits: .5

Grades 10-12

Prerequisite: Chef School 2

Develop skills desired by employers in the restaurant and hospitality industry: advanced culinary techniques, hospitality standards and marketing. This class includes catering projects which require work outside of regular class time. **College Credit Available.**



FOOD SCIENCE

SCI120/121 (YR)

Credits: 1.0

Grades 10-12

Equivalency: 1 credit Science

Explore the knowledge, skills, and practices required for careers in food science, dietetics, and nutrition. Learn about management procedures, nutritional therapy, technology in food production, and diet and nutritional analysis and planning. Conduct experiments (such as the caramelization of sugars and starches) and learn about scientific topics related to food. **College Credit Available.**

PERSONAL FINANCE

HEC315 (Semester)

Credits: .5

Grade Level: 11-12

Gain the skills and knowledge needed to confidently approach the challenges of managing personal finances. Topics include financial responsibility and decision making, personal income, taxes, savings, investments, banking, credit, debt, insurance, and purchasing goods and services. Students also complete a career exploration and develop employment seeking skills. **Fulfills district graduation requirement**



Education and Human Services Pathway



The Education and Human Services Pathway is a great program for students interested in teaching, helping and guiding others to better their lives. **Students who complete 2 credits in this pathway will meet state ELA and Math Graduation Pathway requirements, and...**

- Learn about various careers including teaching, early childhood education, and mental health services.
- Participate in a classroom practicum experience with a mentor teacher.
- Earn college credits which can be applied directly into partner college programs.

This CTE Pathway is a great fit for students who...

- ✓ Enjoy helping and working with people.
- ✓ Are good listeners and relate well to others.
- ✓ Find that teaching, supporting and assisting others is part of who they are.
- ✓ Enjoy solving social problems.
- ✓ Are interested in careers and continued training in fields such as Education, Counseling, and Social Services.

Start Your Pathway with 2 or more credits of Pathway courses

Then, After You Have Finished High School...

Finally, Begin Your Career!

1. Choose Your Pathway Courses

To meet your Graduation Pathway requirement through this CTE Pathway, **select 2 credits of courses as explained below:**

(See the EHS Pathway Courses and Descriptions table to identify the courses available for your high school)

Required:

- HEC470 Child Development (.5 cr.)

Choose 1.5 credits from the following course options:

- PHE301 CTE Health (.5 cr.)
- HEC355 Family Sociology (.5 cr.)
- HEC356 Relationships (.5 cr.)
- HEC333 Intro Early Childhood 1 (.5 cr.)
- HEC334 Intro Early Childhood 2 (.5 cr.)
- HEC450 Chef School 1 (.5 cr.)
- HEC315 Personal Finance (.5 cr.)
- SOC583/584 AP Psychology (1 cr.)

2. Pursue additional credits if you're interested.

While not required to meet your Graduation Pathway requirement, consider taking more than 2 credits of courses in this Pathway to further your learning.

3. Build Your Education Plan

Using the *CTE Pathways Planning Worksheet* on page 3 of this Planning Guide, incorporate your selected courses into your 4-Year High School Education Plan.

Apply college credits earned in this Pathway directly into these partner college programs:

Edmonds College

- Early Childhood Education Certificate and Degree Programs
- Child, Youth and Family Studies BAS program

Continue your training in another college program such as:

Bellevue College

- Early Childhood Education certificate and degree programs.

Multiple 4-Year Colleges and Universities

- Elementary and Secondary Education programs
- Psychology, Sociology and Social Work degree programs

Jobs you can get with 2-Years Post-High School Training:

Chemical Dependency Counselor
Childcare Worker
Community and Social Service Specialist
Educational Assistant
Mental Health Technician

Jobs you can get with 4-Years Post-High School Training:

Director of Childcare Facilities
Elementary/Secondary Teacher
Marriage and Family Therapist
Psychologist/Mental Health Counselor
School Counselor

For more information on these and other occupations related to this pathway, visit

<http://careerbridge.wa.gov/>



Edmonds SD Career and
Technical Education

Education and Human Services Pathway Courses and Descriptions

Pathway Courses	Grades	Length	EWHS	MHS	LHS	MTHS	SLHS
HEC470 Child Development*	9-12	.5 credit, Semester	✓	✓	✓	✓	
PHE301 CTE Health	9-12	.5 credit, Semester	✓	✓	✓	✓	
HEC355 Family Sociology*	9-12	.5 credit, Semester		✓		✓	
HEC356 Relationships	11-12	.5 credit, Semester	✓		✓	✓	
HEC333 Intro to Early Childhood Education 1*	10-12	.5 credit, Semester		✓			
HEC334 Intro to Early Childhood Education 2*	10-12	.5 credit, Semester		✓			
HEC450 Chef School 1	9-12	.5 credit, Semester	✓	✓	✓	✓	
HEC315 Personal Finance	11-12	.5 credit, Semester	✓	✓	✓	✓	
SOC583/584 AP Psychology (MTHS only)*	11-12	1 credit, Full Year				✓	

✓ *Course is available at this school* * *College Credit Available*

CHILD DEVELOPMENT

Note: Required Course

HEC470 (Semester)

Credits: .5

Grades 9-12

Learn about social, emotional, physical and intellectual development throughout the ages and stages of human development. This course is designed for students who are interested in careers working with children. **College Credit Available.**

CTE HEALTH

PHE301 (Semester)

Credits: .5

Grades 9-12

Learn information and strategies for healthful living and responsible decision-making. Topics include both physical and mental health: first aid, nutrition, physical fitness, managing stress, addictions, sexuality education, cancer and communicable diseases (including HIV/AIDS). Student will have the opportunity to obtain FirstAid/CPR/AED certification in this course.

FAMILY SOCIOLOGY

HEC355 (Semester)

Credits: .5

Grades 9-12

Is my family crazy? Explore the dynamics of families, human behavior and development, and relationships. This class combines psychology and sociology to understand why our family members can sometimes drive us crazy, yet we still can't live without them. **College Credit Available.**



INTRO TO EARLY CHILDHOOD EDUCATION 1

HEC333 (Semester)

Credits: 0.5

Grade Level: 10 – 12

Prerequisite: HEC470 Child Development

In this course, students learn knowledge, skills, and practices required for careers in Early Childhood Education and Services. Topics include identifying and meeting children's individual needs, children's health, safety and security, developmental theories, ways people affect one another, and ways the child is significantly shaped and formed by socialization and play. Students will have a variety of opportunities to learn and apply learning through direct interactions with young children up to age 8. This course is articulated with the Edmonds College Early Childhood Education program. **College Credit Available.**

INTRO TO EARLY CHILDHOOD EDUCATION 2

HEC334 (Semester)

Credits: 0.5

Grade Level: 10 – 12

Prerequisite: HEC333 Intro to Early Childhood Education 1

This course continues topics started in Intro to Early Childhood Education 1 while also including a 50-hour observed practicum in Preschool, Kindergarten, or other Early Childhood Education settings. This course is articulated with the Edmonds College Early Childhood Education program and provides opportunity to obtain STARS certification. **College Credit Available.**



CHEF SCHOOL 1

HEC450 (Semester)

Credits: .5

Grades 9-12

Chef 1 is an introductory course where students gain hands-on experience in food preparation techniques, kitchen safety, equipment use, nutrition and menu planning. Students will also learn about careers in food related industries and earn their Food Handlers card in this course.

RELATIONSHIPS

HEC356 (Semester)

Credits: .5

Grades 10-12

Gain a better understanding of the dynamics of all kinds of relationships in this project-based class. Students will investigate healthy relationships and conflict management techniques to apply to their own behavior.

AP PSYCHOLOGY (MTHS Only)

SOC583/584 (Year)

Credits: 1.0

Grades 11-12

Equivalency: 1 credit of 9th or 10th grade

Social Studies

Study behavior and mental processes of human beings and other animals. Topics include psychological principles and phenomena as well as ethics and methods of research. Students are encouraged to take the AP Psychology Exam.

PERSONAL FINANCE

HEC315

(Semester)

Credits: .5

Grade Level: 12

Gain the skills and knowledge needed to confidently approach the challenges of managing personal finances. Topics include financial responsibility and decision making, personal income, taxes, savings, investments, banking, credit, debt, insurance, and purchasing goods and services. Students also complete a career exploration and develop employment seeking skills.

Fulfills district graduation requirement



Healthcare Professions Pathway

The Healthcare Professions Pathway is a great program for students interested in helping people in various healthcare and medical settings. **Students who complete 2 credits in this pathway will meet state ELA and Math Graduation Pathway requirements, and...**

- Obtain First/Aid and CPR Certification.
- Gain understanding of Human Anatomy and Physiology.
- Explore a wide variety of career opportunities available within the medical profession.
- Earn college credits which can be applied directly into partner college programs.
- Meet 3rd Year Science requirements through their Pathway courses.

This CTE Pathway is a great fit for students who...

- ✓ Enjoy helping and working with people.
- ✓ Are good listeners and relate well to others.
- ✓ Enjoy learning about science as it relates to improving the lives of others.
- ✓ Are interested in careers and continued training in various healthcare fields.

Start Your Pathway with 2 or more credits of Pathway courses

Then, After You Have Finished High School...

Finally, Begin Your Career!

1. Choose Your Pathway Courses

To meet your Graduation Pathway requirement through this CTE Pathway, **select the following 2.0 credit Intradistrict course:**

- VOC056/057 Healthcare Professions (2 cr.)

2. Build Your Education Plan

Using the *CTE Pathways Planning Worksheet* on page 3 of this Planning Guide, incorporate your selected course into your 4-Year High School Education Plan

Apply college credits earned in this Pathway directly into these partner college programs:

Edmonds College

- All Allied Health Education Certificate and Degree programs

Continue your training in another college program such as:

Shoreline Community College

- Nursing AAST

University of Washington

- Nursing
- Health Science

Washington State University

- Nursing
- Veterinary Medicine

Jobs you can get with 2-Years Post-High School Training:

Biotechnology Lab Specialist
Certified Nursing Assistant
EMT/Paramedic
Pharmacy Technician
Phlebotomy Technician
Radiologic Technician
Respiratory Therapist

Jobs you can get with 4 or more Years Post-High School Training:

Nurse Practitioner
Physician
Registered Nurse
Veterinarian

For more information on these and other occupations related to this pathway, visit

<http://careerbridge.wa.gov/>



Edmonds SD Career and Technical Education

Healthcare Professions Pathway Courses and Descriptions

Pathway Courses	Grades	Length	EWHS	MHS	LHS	MTHS	SLHS
VOC056/057 Healthcare Professions*	9-12	1 credit, Full year	ID	✓	ID	ID	ID

✓ Course is available at this school

ID = Intra-District Course

* College Credit Available

HEALTHCARE PROFESSIONS

(Intra-District)

VOC056/057 (Yearlong, 2-period block)

Credits: 2.0

Grades 10-12

Intra-District Program: Located at Meadowdale HS, period 1/2 block class. Students from all District high schools may attend this program. District bus transportation is provided. Shared Student Form required for registration.

Equivalency: 1 credit 3rd Year Science (Anatomy and Physiology)

Prerequisite: Completion of or concurrent enrollment in Biology.

Explore a wide range of careers within the Healthcare field while also earning a full year lab science credit in Anatomy and Physiology. Topics include medical terminology, First Aid/CPR, medical law and ethics, chemistry and organization of living matter, the structure and physiology of the major organ systems, and health science career paths. **College Credit Available.**





Environmental Horticulture Pathway

The Environmental Horticulture Pathway is a great program for students interested in the study, propagation, care and installation of plants. **Students who complete 2 credits in this pathway will meet state ELA and Math Graduation Pathway requirements, and...**

- Grow and maintain plants in a working greenhouse facility.
- Learn about the wide range of careers within the Agricultural industry.
- Earn college credits which can be applied directly into partner college programs.
- Meet 3rd Year Science requirements through their Pathway courses.

This CTE Pathway is a great fit for students who...

- ✓ Enjoy working outdoors.
- ✓ Enjoy physical activity and hands on learning experiences.
- ✓ Have an interest in caring for and improving our physical environment.
- ✓ Are interested in careers such as landscaping, greenhouse growing, and work in retail and wholesale nurseries.

Start Your Pathway with 2 or more credits of Pathway courses

Then, After You Have Finished High School...

Finally, Begin Your Career!

1. Choose Your Pathway Courses

To meet your Graduation Pathway requirement through this CTE Pathway, **select 2 credits of courses from the following options:**

(See the Environmental Horticulture Pathway Courses and Descriptions table to identify the courses available for your high school)

- VOC433/434 Env. Horticulture (1 cr.)
- VOC461/462 Adv. Env. Hort. (1 cr.)
- VOC437 Flower Shop (.5 cr.)
- VOC441/442 Adv. Flower Shop (1 cr.)

2. Pursue additional credits if you're interested.

While not required to meet your Graduation Pathway requirement, consider taking more than 2 credits of courses in this Pathway to further your learning.

3. Build Your Education Plan

Using the *CTE Pathways Planning Worksheet* on page 3 of this Planning Guide, incorporate your selected courses into your 4-Year High School Education Plan.

Apply college credits earned in this Pathway directly into this partner college program:

Lake Washington Institute of Technology

- Environmental Horticulture certificate and degree programs

Continue your training in another college program such as:

Edmonds College

- Landscape Design and Ornamental Horticulture

Washington State University

- Horticulture degree program
- Plant Sciences degree program
- Agriculture Education degree programs.

Central Washington University or Western Washington University

- Environmental Science degree programs.

Jobs you can get with 2-Years Post-High School Training:

Groundskeeper
Irrigation Specialist
Landscaper
Landscaping, Groundskeeping and Lawn Service Supervisor
Tree Trimmer/Pruner
Turf Manager

Jobs you can get with 4 or more Years Post-High School Training:

Environmental Engineer
Landscape Architect
Soil and Plant Scientist

For more information on these and other occupations related to this pathway, visit

<http://careerbridge.wa.gov/>



Edmonds SD Career and Technical Education

Horticulture Pathway Courses and Descriptions

Pathway Courses	Grades	Length	EWHS	MHS	LHS	MTHS	SLHS
VOC433/434 Environmental Horticulture*	9-12	1 credit, Full year			✓		
VOC461/462 Environmental Horticulture, Advanced*	10-12	1 credit, Full year			✓		
VOC437 Flower Shop	9-12	.5 credit, Semester			✓		
VOC441/442 Flower Shop, Advanced	10-12	1 credit, Full year			✓		

✓ *Course is available at this school* * *College Credit Available*

ENVIRONMENTAL HORTICULTURE

VOC433/434 (Year)

Credits: 1.0

Grades 9-12

Equivalency: .25 credit Art or 1.0 credit Science

Learn horticulture fundamentals including growing plants, greenhouse environment, pest control, landscape design, pruning, and grounds maintenance as well as basic business skills for greenhouse operation. Each student will be able to grow plants in the greenhouse for personal use and sale. **College Credit Available.**

ENVIRONMENTAL HORTICULTURE, ADVANCED

VOC461/462 (Year)

Credits: 1.0

Grades 10-12

Equivalency: .25 credit Art or 1.0 credit Science

Prerequisite: Environmental Horticulture

Explore horticulture as a possible career choice: growing plants from seeds and cuttings, plant identification, greenhouse management and care, landscape design, installation and maintenance, sales techniques, and careers as well as vegetable and/or flower gardening. Students participate in leadership programs through FFA. **College Credit Available.**

FLOWER SHOP

VOC437 (Semester)

Credits: .5

Grades 9 – 12

Equivalency: .5 credit Art

Make flower arrangements, corsages, wreaths, bouquets, dish gardens, basket gardens, and store/exhibition/displays. Learn about indoor plant identification, basic horticulture fundamentals, plant propagation, plant care and retail sales experience.



FLOWER SHOP, ADVANCED

VOC441/442 (Year)

Credits: .5

Grades 10 – 12

Equivalency: .5 credit Art

Prerequisite: Flower Shop

Develop more advanced skills with floral design, business operations and management. Learn how to take and fill wedding and funeral orders in addition to determining the quantities of supplies needed to fill customer requests.



Journalism Pathway (Mountlake Terrace HS)

The Journalism Pathway at Mountlake Terrace HS is a great program for students interested in researching, publishing, and broadcasting news media. **Students who complete 2 credits in this pathway will meet state ELA and Math Graduation Pathway requirements, and...**

- Publish and produce stories through the award-winning Hawkeye and Hawk TV news.
- Work as member of editing and production teams.
- Participate in competitions as members of the Journalism Education Association (JEA)
- Earn college credits which can be applied directly into partner college programs.
- Meet Art credit requirements through their Journalism Pathway courses.

This CTE Pathway is a great fit for students who...

- ✓ Are curious about the world around them.
- ✓ Enjoy working with people.
- ✓ Enjoy projects that allow for research and production.
- ✓ Are patient, flexible and have an eye for detail.
- ✓ Are interested in careers where various media is used to communicate information and ideas.

Start Your Pathway with 2 or more credits of Pathway courses

Then, After You Have Finished High School...

Finally, Begin Your Career!

1. Choose Your Pathway Courses:

To meet your Graduation Pathway requirement through this CTE Pathway, **select 2 credits of courses from the following options:**

(See the *Journalism Pathway Courses and Descriptions* table to identify the courses available for your high school)

- ENG518/519 Journalism (1 cr.)
- ENG520/521 Adv. Journalism (1 cr.)
- IAR768 Broadcast Journalism (.5 cr.)
- IAR769 Adv. Broadcast Journalism (.5 cr.)

2. Pursue additional credits if you're interested.

While not required to meet your Graduation Pathway requirement, consider taking more than 2 credits of courses in this Pathway to further your learning.

3. Build Your Education Plan

Using the *CTE Pathways Planning Worksheet* on page 3 of this Planning Guide, incorporate your selected courses into your 4-Year High School Education Plan.

Apply college credits earned in this Pathway directly into these partner college programs:

Edmonds College*

- Associate Degree Journalism program

* Note: Journalism and Advanced Journalism offer College in HS credit through Edmonds College which can apply to Associate Degree Transfer programs at multiple Community and Technical Colleges

Continue your training in another college program such as:

Bates Technical College

- Broadcasting and Video Production AAS program

Eastern Washington University

- Bachelor Arts in Journalism program

Washington State University

- Bachelor of Arts in Journalism and Media Production program

Jobs you can get with 2-Years Post-High School Training:

Audio/Video Technician
Broadcast Technician
Desktop Publisher
Film and Video Editor
Radio and Television Announcer

Jobs you can get with 4 or more Years Post-High School Training:

Broadcast News Analyst
Editor
Radio and Television Announcer
Reporter and Correspondent

For more information on these and other occupations related to this pathway, visit

<http://careerbridge.wa.gov/>



Edmonds SD Career and Technical Education

Journalism Pathway Courses and Descriptions

Pathway Courses	Grades	Length	EWHS	MHS	LHS	MTHS	SLHS
ENG518/519 Journalism*	9-12	1 credit, Full year				✓	
ENG520/521 Journalism, Advanced*	10-12	1 credit, Full year				✓	
IAR768 Broadcast Journalism	10-12	.5 credit, Semester				✓	
IAR769 Broadcast Journalism, Advanced	10-12	.5 credit, Semester				✓	

✓ *Course is available at this school* * *College Credit Available*

JOURNALISM

ENG518/519 (Year)

Credits: 1.0

Grades 9-12

This course is required of students who wish to take on a leadership role with the Hawkeye newspaper and extend their journalism and print publication skills. Students learn reporting, editing, advertising sales, photojournalism and desktop skills while publishing online and print news. **College Credit Available.**

JOURNALISM, ADVANCED

ENG520/521 (Year)

Credits: 1.0

Grades 10-12

Learn about all aspects of print and Web journalism through a variety of hands-on, real-world projects – many of which will be submitted to the school's newspaper/online news site, the Hawkeye. Students develop a portfolio of several writing approaches and learn reporting, editing, advertising sales, photojournalism, and desktop publishing. **College Credit Available.**

BROADCAST JOURNALISM

IAR768 (Semester)

Credits: .5

Grades 10 – 12

Equivalency: .5 credit Art; .5 recover credit for English 9-10

Produce HAWK TV and practice the skills necessary for effective school-based announcements producing a finished product published to the school every day. Students will operate equipment, write scripts, direct, anchor the news and file field reports.



BROADCAST JOURNALISM, ADVANCED

IAR769 (Semester)

Credits: .5

Grades 10 – 12

Equivalency: .5 credit Art; .5 recover credit for English 9-10

Prerequisite: Broadcast Journalism

Build upon skills learned in Broadcast Journalism and continue to develop attitudes of responsibility, commitment, leadership, and professionalism. Produce creative videos while honoring the need for truth and integrity in journalism.





Sports Medicine Pathway

The Sports Medicine Professions Pathway is a great program for students interested in helping people through personal fitness or athletic training. **Students who complete 2 credits in this pathway will meet state ELA and Math Graduation Pathway requirements, and...**

- Obtain First Aid/CPR/AED Certification.
- Gain understanding of Human Anatomy and Physiology and Athletic Training techniques.
- Participate in a Sports Medicine practicum working with district Athletic Trainers.
- Earn college credits which can be applied directly into partner college programs.
- Meet Science, Health and PE credit requirements through their Pathway courses.

This CTE Pathway is a great fit for students who...

- ✓ Enjoy helping and working with people.
- ✓ Enjoy fitness training and assisting others in their fitness goals.
- ✓ Are interested in helping others who are injured and in need of medical care.
- ✓ Enjoy learning about science as it relates to improving the lives of others.
- ✓ Are interested in career fields such as Fitness Training, Physical Therapy, and Athletic Training.

Start Your Pathway with 2 or more credits of Pathway courses

Then, After You Have Finished High School...

Finally, Begin Your Career!

1. Choose Your Pathway Courses

To meet your Graduation Pathway requirement through this CTE Pathway, **select 2 credits of courses from the following options:**

(See the Sports Medicine Pathway Courses and Descriptions table to identify the courses available for your high school)

- PHE032/033 Sports Medicine (1 cr.)
- PHE040/041 Sports Medicine, Advanced (1 cr.)
- PHE037/038 Field Experience (1 cr.)
- SCI408/409 Anatomy/Physiology (1 cr.)
- SCI424/425 Biotechnology (1 cr.)

2. Pursue additional credits if you're interested.

While not required to meet your Graduation Pathway requirement, consider taking more than 2 credits of courses in this Pathway to further your learning.

3. Build Your Education Plan

Using the *CTE Pathways Planning Worksheet* on page 3 of this Planning Guide, incorporate your selected courses into your 4-Year High School Education Plan.

Apply college credits earned in this Pathway directly into these partner college programs:

Bellevue College

- Personal Fitness Trainer Certificate program

Continue your training in another college program such as:

Eastern Washington University

- Athletic Training degree program

Washington State University

- Athletic Training degree program

Jobs you can get with 2-Years Post-High School Training:

EMT/Paramedic
Fitness/Personal Trainer
Physical Therapist Assistant

Jobs you can get with 4 or more Years Post-High School Training:

Athletic Trainer
Exercise Physiologist
Occupational Therapist
Physician
Physical Therapist

For more information on these and other occupations related to this pathway, visit

<http://careerbridge.wa.gov/>



Edmonds SD Career and
Technical Education

Sports Medicine Pathway Courses and Descriptions

Pathway Courses	Grades	Length	EWHS	MHS	LHS	MTHS	SLHS
PHE032/033 Sports Medicine*	10-12	1 credit, Full year	✓	✓	✓	✓	
PHE040/041 Sports Medicine, Advanced*	11-12	1 credit, Full year	✓	✓	✓	✓	
PHE037/038 Sports Medicine Field Experience	10-12	1 credit, Full year	✓	✓	✓	✓	
SCI408/409 Anatomy & Physiology*	10-12	1 credit, Full year		✓	✓	✓	
SCI424/425 Biotechnology*	10-12	1 credit, Full year		✓	✓	✓	

✓ *Course is available at this school* * *College Credit Available*

SPORTS MEDICINE

PHE032/033 (Year)

Credits: 1.0

Grades 10-12

Equivalency: .25 credit Health or .5 PE

Study health, fitness, anatomy, physiology, injury treatment, injury response, and nutrition. First Aid, CPR, athletic injury prevention, care and rehabilitation and emergency procedures will also be taught. *Students enrolled in this class are required to register for Field Experience (PHE037/038).* **College Credit Available.**

ADVANCED SPORTS MEDICINE

PHE040/041 (Year)

Credits: 1.0

Grades 11-12

Equivalency: .25 credit Health or .5 PE

Prerequisite: Sports Medicine

Expand your knowledge of sports medicine, in preparation for careers in athletic training, physical therapy, and other health/medical occupations. *Students enrolled in this class are required to register for Field Experience (PHE037/038).* **College Credit Available.**

SPORTS MEDICINE FIELD EXPERIENCE

PHE037/038 (Year)

Credits: 0.5 per semester

Grade Level: 10 - 12

Equivalency: .5 credit Health or .5 PE

Prerequisite: Concurrent enrollment in Sports Medicine or Advanced Sports Medicine.

Experience will be obtained through working with athletic teams and high school sports event coverage. Students will arrange 90 hours after school each semester with the teacher.



BIOTECHNOLOGY

SCI424/425 (Year)

Credits: 0.5 per semester

Grade Level: 10 - 12

Prerequisites: Biology and completion of/or concurrent enrollment in Chemistry

Equivalency: 1.0 credit Science

Explore topics such as DNA analysis, genetic engineering, and stem cells, as well as biotechnology related to medicine, global health, environmental issues and bioethics. Participate in hands-on lab experience to develop skills and techniques that are typical of research and medical laboratories. Complete a year-long biotechnology project and participate in the regional Bio Expo Science Fair. **College Credit Available.**

ANATOMY & PHYSIOLOGY

SCI408/409 (Year)

Credits: 0.5 per semester

Grade Level: 11 - 12

Equivalency: 1.0 credit Lab Science

Prerequisite: Completion of or concurrent enrollment in Biology.

Gain basic information regarding the chemistry and organization of living matter needed to understand cellular, tissue and organ functions. Study the structure and physiology of the major organ systems and perform dissections. **College Credit Available.**



Visual Communications Pathway



The Visual Communications Pathway is a great program for students interested in creating and producing media using various editing tools. **Students who complete 2 credits in this pathway will meet state ELA and Math Graduation Pathway requirements, and...**

- Gain skills and experience using professional image and video editing tools.
- Participate in skill competitions and art shows where they can display their work.
- Earn college credits which can be applied directly into partner college programs.
- Meet Art credit requirements through their Pathway courses.

This CTE Pathway is a great fit for students who...

- ✓ Consider themselves artistic, imaginative, and innovative.
- ✓ Enjoy working with people.
- ✓ Enjoy projects that allow for personal creativity and self-expression.
- ✓ Are patient, flexible and have an eye for detail.
- ✓ Are interested in careers where various media is used to communicate information and ideas.

Start Your Pathway with 2 or more credits of Pathway courses

Then, After You Have Finished High School...

Finally, Begin Your Career!

1. Choose Your Pathway Courses

To meet your Graduation Pathway requirement through this CTE Pathway, **select 2 credits of courses from the following options:**

(See the *Visual Communications Pathway Courses and Descriptions* table to identify the courses available for your high school)

- ART427 Graphic Arts 1 (.5 cr.)
- ART428 Graphic Arts 2 (.5 cr.)
- ART430 Photo 1 (.5 cr.)
- ART433/435 Photo, Advanced (1.0 cr.)
- ART437/438 AP Studio Art: Photo (1.0 cr.)
- ENG522 Film Analysis (.5 cr.)
- IAR618 Video Production (.5 cr.)
- IAR768 Broadcast Journalism (.5 cr.)
- IAR769 Broadcast Journalism, Advanced (.5 cr.)

2. Pursue additional credits if you're interested.

While not required to meet your Graduation Pathway requirement, consider taking more than 2 credits of courses in this Pathway to further your learning.

3. Build Your Education Plan

Using the *CTE Pathways Planning Worksheet* on page 3 of this Planning Guide, incorporate your selected courses into your 4-Year High School Education Plan.

Apply college credits earned in this Pathway directly into these partner college programs:

Bellevue College

- Digital Media Arts Certificate and Degree programs

Lake Washington Institute of Technology

- Design certificate and transfer degree programs
- Bachelor in Applied Science of Design program

Shoreline Community College

- Visual Communications Certificate and Degree programs

Continue your training in another college program such as:

Edmonds College

- Visual Communications certificate and degree programs

DigiPen Institute of Technology

- Digital Art and Animation degree program

Jobs you can get with 2-Years Post-High School Training:

Audio and Video Equipment Technicians
Broadcast Technician
Photographer
Sound Engineering Technician

Jobs you can get with 4 or more Years Post-High School Training:

Commercial and Industrial Designers
Graphic Designers
Multimedia Artists and Animators
Public Relations Specialists
Technical Writers

For more information on these and other occupations related to this pathway, visit

<http://careerbridge.wa.gov/>



Edmonds SD Career and Technical Education

Visual Communications Pathway Courses and Descriptions

Pathway Courses	Grades	Length	EWHS	MHS	LHS	MTHS	SLHS
ART427 Graphic Arts 1	9-12	.5 credit, Semester	✓	✓	✓	✓	✓
ART428 Graphic Arts 2*	9-12	.5 credit, Semester	✓	✓	✓	✓	✓
ART430 Photography*	9-12	.5 credit, Semester	✓	✓	✓	✓	✓
ART433/435 Photography, Advanced	10-12	1 credit, Full year	✓	✓	✓		✓
ART437/438 AP Studio Art: Photography	10-12	1 credit, Full year		✓	✓		
ENG522 Film Analysis	11-12	.5 credit, Semester				✓	
IAR618 Video Production*	9-12	.5 credit, Semester	✓			✓	
IAR768 Broadcast Journalism	10-12	.5 credit, Semester				✓	
IAR769 Broadcast Journalism, Advanced	10-12	.5 credit, Semester				✓	

✓ *Course is available at this school* * *College Credit Available*

GRAPHIC ARTS 1

ART427 (SEM)

Credits: .5

Grades 9-12

Equivalency: .5 credit Art

Explore the creative process using digital imaging software, photography, and a wide variety of image generating techniques. Develop drawing skills and build a portfolio using Adobe Photoshop, Illustrator, In Design, and digital cameras.

GRAPHIC ARTS 2

ART428 (SEM)

Credits: .5

Grades 9-12

Equivalency: .5 credit Art

Prerequisite: Graphic Arts 1

Engage in client-centered design projects using digital imaging software, photography, image manipulation, Adobe Photoshop, Illustrator, In Design, and digital cameras to produce professional level products. Emphasis will be on project design and management, organization, production techniques, and creating solutions based on customer needs. **College Credit Available.**

PHOTOGRAPHY

ART430 (Semester)

Credits: .5

Grades 9-12

Equivalency: .5 credit Art

Explore the photographic process as a method of creative and visual communication. Learn digital SLR camera controls, photography techniques and composition, and use Creative Cloud editing software. Students will also be introduced to the history of photography, careers related to photography, and famous photographers. **College Credit Available.**



ADVANCED PHOTOGRAPHY

ART433/435 (Year)

Credits: 1.0

Grades 10-12

Equivalency: 1 credit of Art

Prerequisite: Photography 1

Build upon knowledge from Photo 1 as well as learn new and more advanced DSLR camera controls, photography techniques, composition, lighting and Adobe Photoshop and Lightroom editing skills. Students will gain a deeper understanding of the art elements and principles of design and be introduced to 35mm film cameras and the use of the darkroom to process prints.

AP STUDIO ART: PHOTOGRAPHY

ART437/438 (Year)

Credits: 1.0

Grades 10-12

Equivalency: 1.0 credit Art

Prerequisite: Photography

This course provides support through a series of assignments with a goal of submitting a well-rounded portfolio for evaluation at the end of the school year. Students who enroll should plan to work extensively both in and out of the class to complete assignments. A fee is required for the submission of an AP portfolio.

Continued on next page...

VIDEO/FILM PRODUCTION

IAR618 (Semester)

Credits: .5

Grades 9-12

Equivalency: .5 credit Art

Learn the basics of film making while producing digital videos with HD camcorders, using computer software for editing. Students will be expected to work successfully in small groups to create dramatic shorts, commercials, music videos, and public service announcements.

College Credit Available.

BROADCAST JOURNALISM

IAR768 (Semester) Credits: .5

Grades 10 – 12

Equivalency: .5 credit Art; .5 recover credit for English 9-10

Produce HAWK TV and practice the skills necessary for effective school-based announcements producing a finished product published to the school every day. Students will operate equipment, write scripts, direct, anchor the news and file field reports.

ADVANCED BROADCAST JOURNALISM

IAR769 (Semester) Credits: .5

Grades 10 – 12

Equivalency: .5 credit Art; .5 recover credit for English 9-10

Prerequisite: Broadcast Journalism

Build upon skills learned in Broadcast Journalism and continue to develop attitudes of responsibility, commitment, leadership and professionalism. Produce creative videos while honoring the need for truth and integrity in journalism.

FILM ANALYSIS

ENG522 (SEM)

Credits: .5

Grades 11-12

Equivalency: .5 credit English retrieval

Learn the fundamental vocabulary, artistry and technology of film and produce a basic digital film. Develop a sense of aesthetics and the ability to critically analyze by viewing, critiquing, discussing and writing about a variety of movies.

CTE Equivalency Credit Courses

The following are approved high school CTE equivalency courses that may be used to meet more than one graduation requirement. While these equivalencies will meet district graduation requirements, they may not satisfy college admission requirements in all cases. Students should check with individual colleges regarding the use of particular equivalency courses.

Each of these courses automatically meet one of the graduation requirements listed for a course based on a student's particular credit needs. A student can request to have an equivalency course satisfy two graduation requirements listed for the course by completing and submitting an Equivalency Request Form to the school counseling office. **It is important to understand that while an equivalency course may satisfy more than one graduation requirement, no course can be worth more than the total amount of credit it has been assigned.**

Course Code	CTE Course Title	CTE Credit Earned	Approved Equivalency Areas
BUS100	Accounting 1	0.5	0.5 credit Personal Finance
IAR267/268	Aerospace Engineering	1.0	1.0 credit Science
SCI408/409	Anatomy and Physiology	1.0	1.0 credit Science
COM206/207	AP Computer Science A	1.0	1.0 credit Third Year Math, 1.0 credit Science
COM195/196	AP Computer Science Principles	1.0	1.0 credit Third Year Math
SCI213/214	AP Environmental Science (MHS Only)	1.0	1.0 credit Science
SOC583/584	AP Psychology - MTHS Only	1.0	1.0 credit Soc. St. 9,10, or 12
ART441,442	AP Studio Art - Photography	1.0	1.0 credit Arts
VOC147/148	Applied Engineering & Manufacturing	2.0	1.0 credit Third Year Math, 1.0 credit Science
VOC327/328	Auto Technology	2.0	1.0 credit English 9-12, 1.0 credit Science
VOC336/337	Auto Technology, Adv.	2.0	1.0 credit Third Year Math, 1.0 credit Science
SCI424/425	Biotechnology	1.0	1.0 credit Science
IAR768	Broadcast Journalism	0.5	0.5 credit Arts, 0.5 credit English 9 or 10
IAR769	Broadcast Journalism, Advanced	0.5	0.5 credit Arts, 0.5 credit English 9 or 10
VOC615/616	Carpentry and Construction	2.0	1.0 credit Geometry or 1.0 credit Third Year Math
VOC111/112	Design CAD 1&2 (2 pd. class)	2.0	1.0 credit Arts
IAR221/222	Design/CAD 1 (1st Year)	1.0	1.0 credit Arts
IAR231/232	Design/CAD 2 (2nd Year)	1.0	1.0 credit Arts
MAR400	Economics	0.5	0.5 credit Soc. St. 9,10, or 12
ENG405/406	English 12 STEM	1.0	1.0 credit English 12
ENG522	Film Analysis	0.5	0.5 credit Arts, 0.5 credit English 9-12
MAT365/366	Financial Algebra	1.0	1.0 credit Third Year Math, 0.5 credit Personal Finance
MAT368/369	Financial Algebra/Business Math (CHS)	1.0	1.0 credit Third Year Math, 0.5 credit Personal Finance
VOC437	Flower Shop	0.5	0.5 credit Arts
VOC441/442	Flower Shop, Advanced	1.0	1.0 credit Arts
SCI120/121	Food Science	1.0	1.0 credit Science
ART427	Graphic Arts 1	0.5	0.5 credit Arts
ART428	Graphic Arts 2	0.5	0.5 credit Arts
VOC211/212	Green Building Architectural Design	2.0	1.0 credit Arts
VOC056/057	Healthcare Professions	2.0	1.0 credit English, 1.0 credit Science, .5 credit Health
VOC433/434	Horticulture	1.0	0.5 credit Arts, 1.0 credit Science
VOC461/462	Horticulture, Advanced	1.0	0.5 credit Arts, 1.0 credit Science
IAR115/116	Introduction to Engineering Design	1.0	1.0 credit Arts
IAR121/122	Manufacturing Innovations	1.0	1.0 credit Arts
ART430	Photography 1	0.5	0.5 credit Arts
ART433/435	Photography, Advanced	1.0	1.0 credit Arts
IAR135/136	Principles of Engineering	1.0	.5 credit Science
IAR265	Robotics	0.5	0.25 credit Science
PHE032/033	Sports Medicine	1.0	0.5 credit Health, 0.5 credit PE
PHE037/038	Sports Medicine Field Experience	1.0	0.5 credit Health, 0.5 credit PE
PHE040/041	Sports Medicine, Advanced	1.0	0.5 credit Health, 0.5 credit PE
IAR625/626	Video/Film Productions, Advanced	1.0	1.0 credit Arts
IAR618	Video/Film Productions, Intro	0.5	0.5 credit Arts

CTE College Credit Courses

CTE Dual Credit

The following are CTE dual credit courses where students can earn college credit that can be directly applied to college Professional Technical Certificate and Associate Degree programs. Students must earn a "B" in the course and pay a fee of \$50 for the year to obtain college credits.

Course Code	CTE Course Title	College Credits	College	Articulated College Course
BUS100	Accounting 1	5	EC	ACCT101 Accounting Fundamentals
SCI409/409	Anatomy and Physiology	5	EC	AHE111 The Human Body: Structure & Function
VOC147/148	Applied Engineering and Manufacturing	5	EC	ETEC Manufacturing Basics
IAR110	Auto Basics	2	LWIT	AUTO124 Maintenance Procedures
VOC327/328	Automotive Technology	16	LWIT	AUTO140 Brake Systems
VOC336/337	Automotive Technology, Advanced	10	LWIT	AUTO210 Engines, Cylinder Blocks, Cooling Systems
VOC336/337	Automotive Technology, Advanced	4.5	SCC	AUTOA110 Intro to Automotive Service
VOC336/337	Automotive Technology, Advanced	7	SCC	AUTOA111 Intro to Electrical Systems
VOC336/337	Automotive Technology, Advanced	6	SCC	AUTOA112 Intro to Braking Systems
VOC336/337	Automotive Technology, Advanced	4.5	SCC	AUTOA113 Intro to Steering and Suspension
VOC336/337	Automotive Technology, Advanced	4.5	SCC	AUTOA114 Intro to Engine Design and Maintenance
VOC336/337	Automotive Technology, Advanced	4.5	SCC	AUTOA115 Intro to Automotive Drivetrains
VOC336/337	Automotive Technology, Advanced	3	SCC	AUTOA116 Intro to Engine Performance Systems
VOC336/337	Automotive Technology, Advanced	3	SCC	AUTOA117 Intro to Air Conditioning/Heating Systems
SCI424/425	Biotechnology	5	SCC	BIOL107 Biology and Society
HEC457	Chef 2	2	EC	CLART131 Culinary: Pantry Preparation 1
HEC458	Chef 3	2	EC	CLART181 Culinary: Hot & Cold Sandwich Preparation
HEC470	Child Development	5	EC	EDUC&115 Child Development
COM557/558	Cybersecurity	5	EC	CIS274 Cybersecurity Fundamentals
IAR221/222	Design for Built Environment/CAD 1	3	LWIT	ENGT101 Arch Engineering Tools/Techniques
VOC111/112	Design for Built Environment/CAD 1-2	3	LWIT	ENGT101 Arch Engineering Tools/Techniques
VOC111/112	Design for Built Environment/CAD 1-2	8	LWIT	ENGT131/132 AutoCAD 1 and 2
IAR231/232	Design for Built Environment/CAD 2	8	LWIT	ENGT131/132 AutoCAD 1 and 2
VOC433/434	Environmental Horticulture	4	LWIT	HORT299 Horticulture Independent Studies
VOC461/462	Environmental Horticulture, Advanced	4	LWIT	HORT300 Horticulture, Advanced
HEC355	Family Sociology	3	EC	EDUC&150 Child, Family and Community
MAT365/366	Financial Algebra (EWHS)	1	BC	BUS102 Personal Money Management
MAT365/366	Financial Algebra (EWHS)	1	BC	BUS103 Personal Savings
MAT365/366	Financial Algebra (EWHS)	1	BC	BUS104 Personal Credit
MAT365/366	Financial Algebra (EWHS)	1	BC	BUS105 Personal Taxes
MAT365/366	Financial Algebra (EWHS)	1	BC	BUS106 Personal Risk Management
MAT365/366	Financial Algebra (EWHS)	1	BC	BUS108 Personal Investment
SCI120/121	Food Science	2	LWIT	CART115 Food Service Safety and Sanitation
ART428	Graphic Arts 2 (must complete GA 1)	5	BC	DMA102 Digital Design
VOC056/057	Healthcare Professions	5	EC	AHE110 The Human Body: Structure & Function
VOC056/057	Healthcare Professions	1	EC	AHE115 CPR and First Aid
VOC056/057	Healthcare Professions	4	EC	AHE116 Intro to Healthcare
VOC056/057	Healthcare Professions	3	EC	BSTEC104 Medical Terminology
VOC056/057	Healthcare Professions	1	EC	SHS170 Nursing Assistant HIV AIDS Training
HEC333	Intro to Early Childhood Education 1	5	EC	ECED&105 Intro to Early Childhood Education
HEC334	Intro to Early Childhood Education 2	5	EC	ECED&107 Health, Safety and Nutrition
IAR115/116	Intro to Engineering Design	4	LWIT	ENGR100 College Success in Engineering
COM100/200	IT Academy 1 or 2	5*	BC	BTS168 Business Data Management Tools (MS Access)
COM100/200	IT Academy 1 or 2	5*	BC	BTS165 Business Spreadsheet Design (MS Excel)
COM100/200	IT Academy 1 or 2	5*	BC	BTS147 Presentation Design/Delivery (MS PowerPoint)
COM100/200	IT Academy 1 or 2	5*	BC	BTS161 Business Software Essentials (MS Word)
MAR410	Marketing Essentials	5	BC	MKTG101 Intro to Marketing
ART430	Photography	4	LWIT	DSGN128 Digital Photography
MAR460	Retail Store	5	BC	MKTG135 Principles of Retailing
MAR420	Sales and Advertising	5	BC	MKTG131 Principles of Professional Selling
MAR465	Sports and Entertainment Marketing	5	BC	MKTG103 Intro to Sports Marketing
PHE032/033	Sports Medicine	4	BC	HLTH292 First Aid and CPR
PHE040/041	Sports Medicine, Advanced	4	BC	PE267 Kinesiology
IAR618	Video Production	5	BC	DMA246 Video Production

* For college credit in IT Academy Courses, students may only earn college credit for passing Microsoft Office Certifications.

College in High School (CIHS)

The following are CTE CIHS courses where students can earn college credit that can be directly applied to academic Associate Degree programs. Students must earn a passing grade in their CTE course to obtain the college credits. There is no fee for the college credits in these courses.

Course Code	CTE Course Title	College Credits	College	Articulated College Course
BUS200	Accounting 2	5	EC	ACCT& 201 Principles of Accounting
COM206/207	AP Computer Science A	5	UW	CSE121 Intro to Computer Programming 1
COM557/558	Cybersecurity	5	EC	CIS274 Cybersecurity Fundamentals
ENG518/519	Journalism (MTHS only)	5	EC	JOURN125 Intro to Journalism
FLA101/102	American Sign Language (ASL) 1	5	LWIT	ASL& 121 American Sign Language 1
FLA201/202	American Sign Language (ASL) 2	5	LWIT	ASL& 122 American Sign Language 2
IAR115/116	Intro to Engineering Design	5	EC	ENGR&114 Engineering Graphics
MAT368/369	Financial Algebra/Business Math (CHS)	5	EC	BUS130 Business Math
VOC147/148	Applied Engineering and Manufacturing	5	EC	ENGR& 114 Engineering Graphics

BC = Bellevue College EC = Edmonds College LWTech = Lake WA Institute of Technology SCC = Shoreline CC UW = University of Washington

The Edmonds School District prohibits discrimination based on age, sex, race, color, religion, creed, national origin, genetic information, sexual orientation including gender expression or identity, marital status, honorably discharged veteran or military status, or the presence of any sensory, mental, or physical disability or use of a trained dog guide or service animal by a person with a disability, or any other basis prohibited by law or Edmonds School District policy, except as may be necessary to meet a bona fide occupational qualification, and provides equal access to the Boy Scouts and other designated youth groups.

The Edmonds School District is an equal opportunity employer and has implemented programs to address the diversity of its workforce. This holds true for all District employment and opportunities.