

# EDUCATION SERVICES

## MARIN COUNTY OFFICE OF EDUCATION

LAURA TRAHAN – MCOE

TYLER GRAFF – ROSS VALLEY SCHOOL DISTRICT





# OUTCOMES

## WHAT YOU WILL LEAVE WITH:

- MCOE Education Services support to districts and TK- 12 educators
- District perspective of support
- Levels of Support: The work we get to do
- Understand how we support our districts, their staff, and students:
  - Who are our students
  - The role of equity
  - Broad view of accountability and the role in education
- Relationships – the center of all things





# Collaboration & Relationship





# LEVELS OF SUPPORT

---







---

Professional Development  
Networks  
Plan Development  
Grants  
Consortiums  
Resources  
Awards and Competitions  
Induction

# LEVEL 1

Supports of all Districts and Schools







---

Differentiated Assistance  
Comprehensive Support and Improvement  
Qualified Budget  
Williams Review  
Alternative Dispute Resolution  
Coaching

# LEVEL 2

Intensive and Targeted support  
in response to a specific need

- Time bound
- Identified process





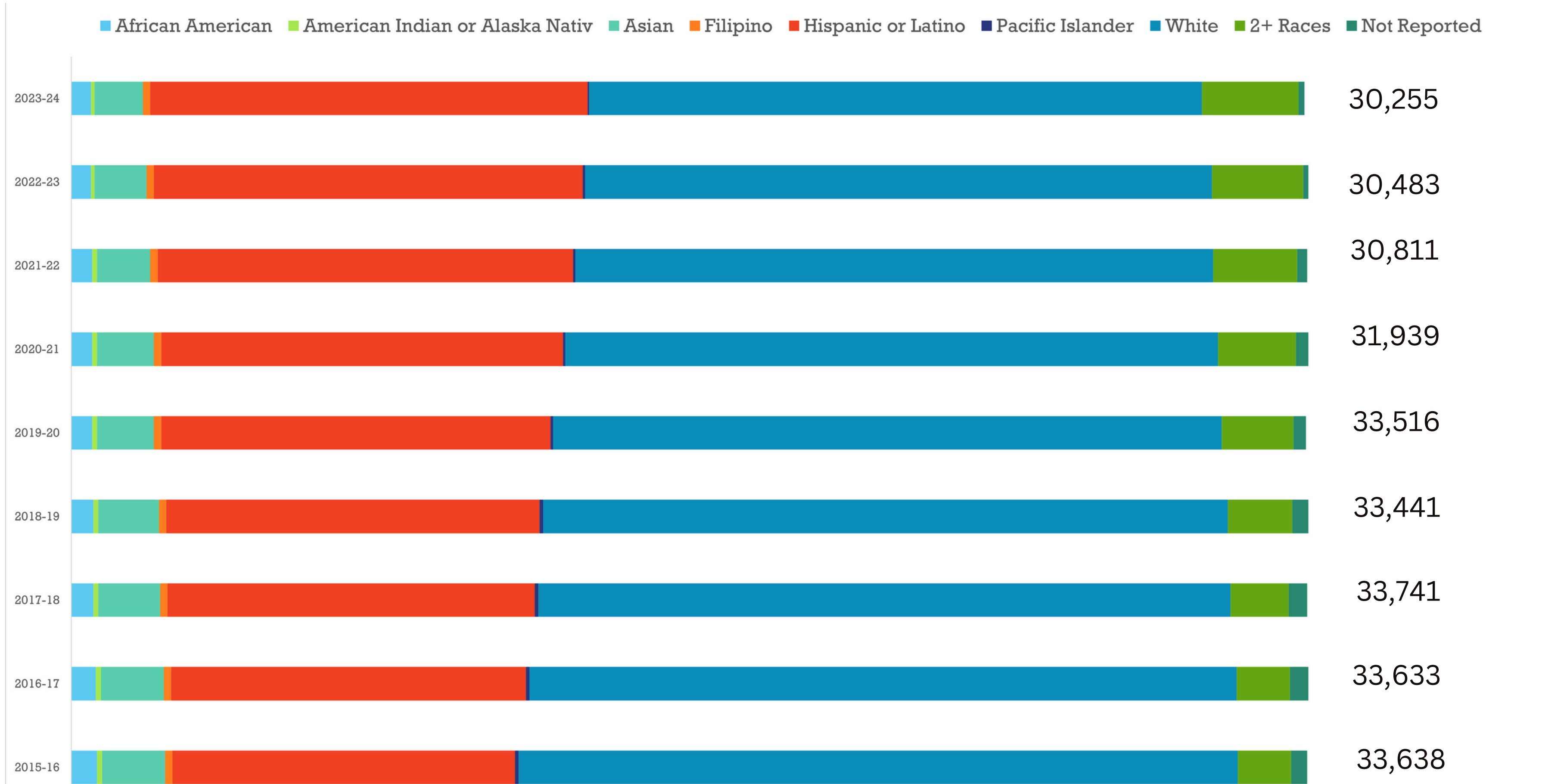


# OUR STUDENTS

Demographic Overview



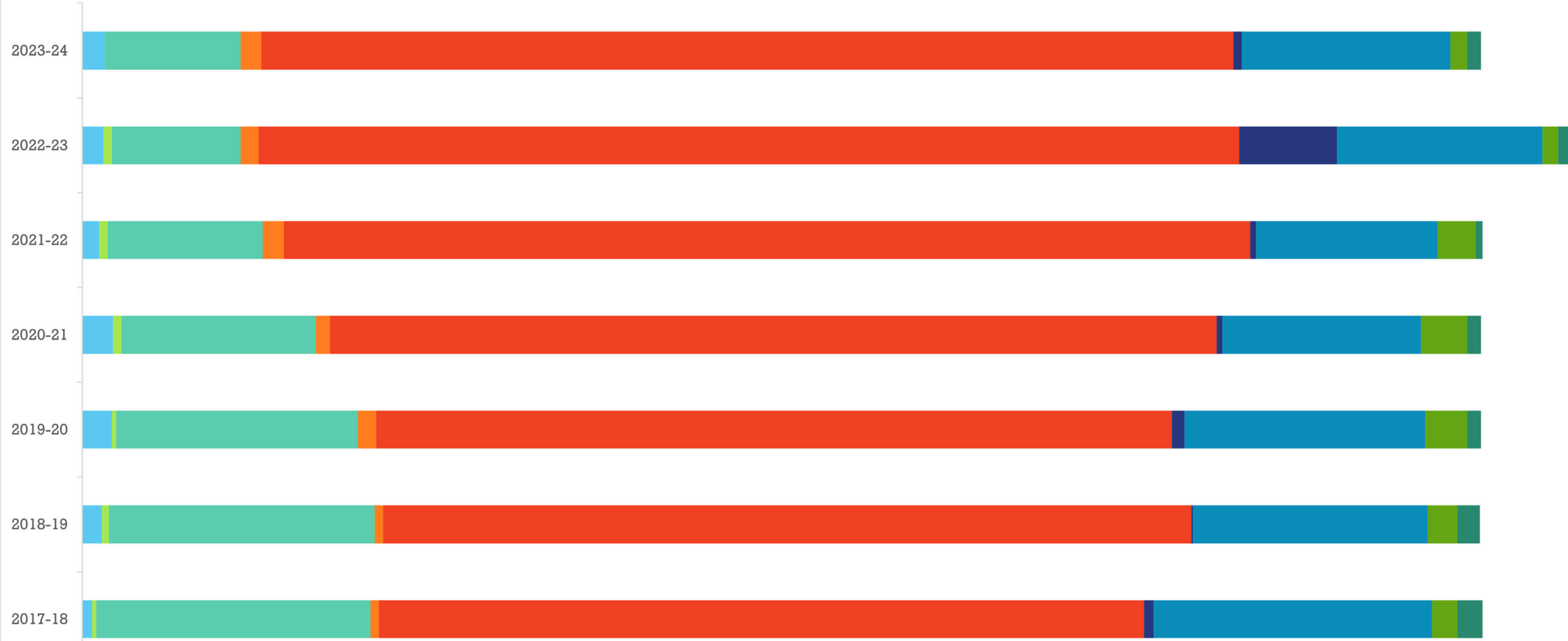
# ENROLLMENT - MULTI - YEAR





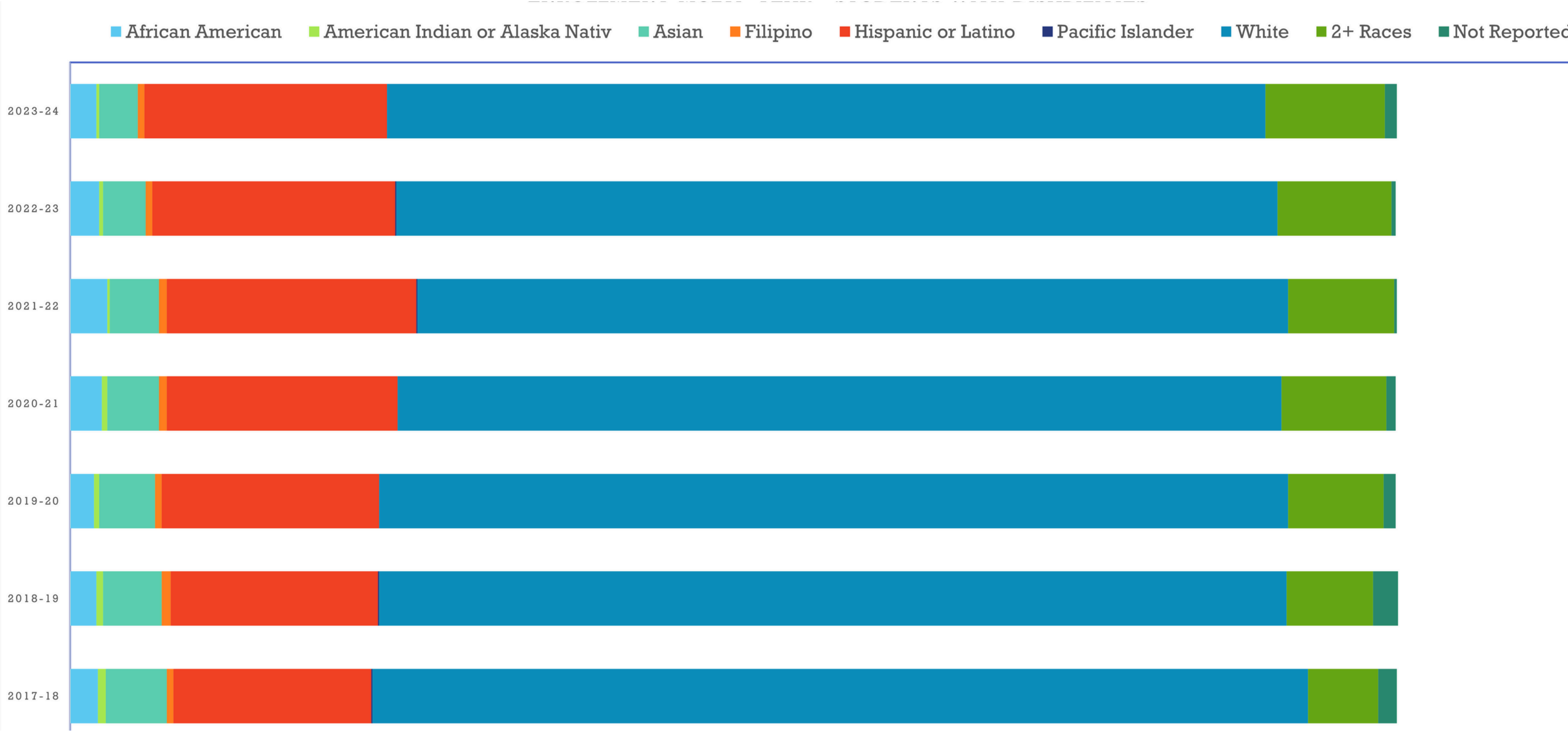
# ENROLLMENT - ENGLISH LEARNERS

African American   American Indian or Alaska Nativ   Asian   Filipino   Hispanic or Latino   Pacific Islander   White   2+ Races   Not Reported



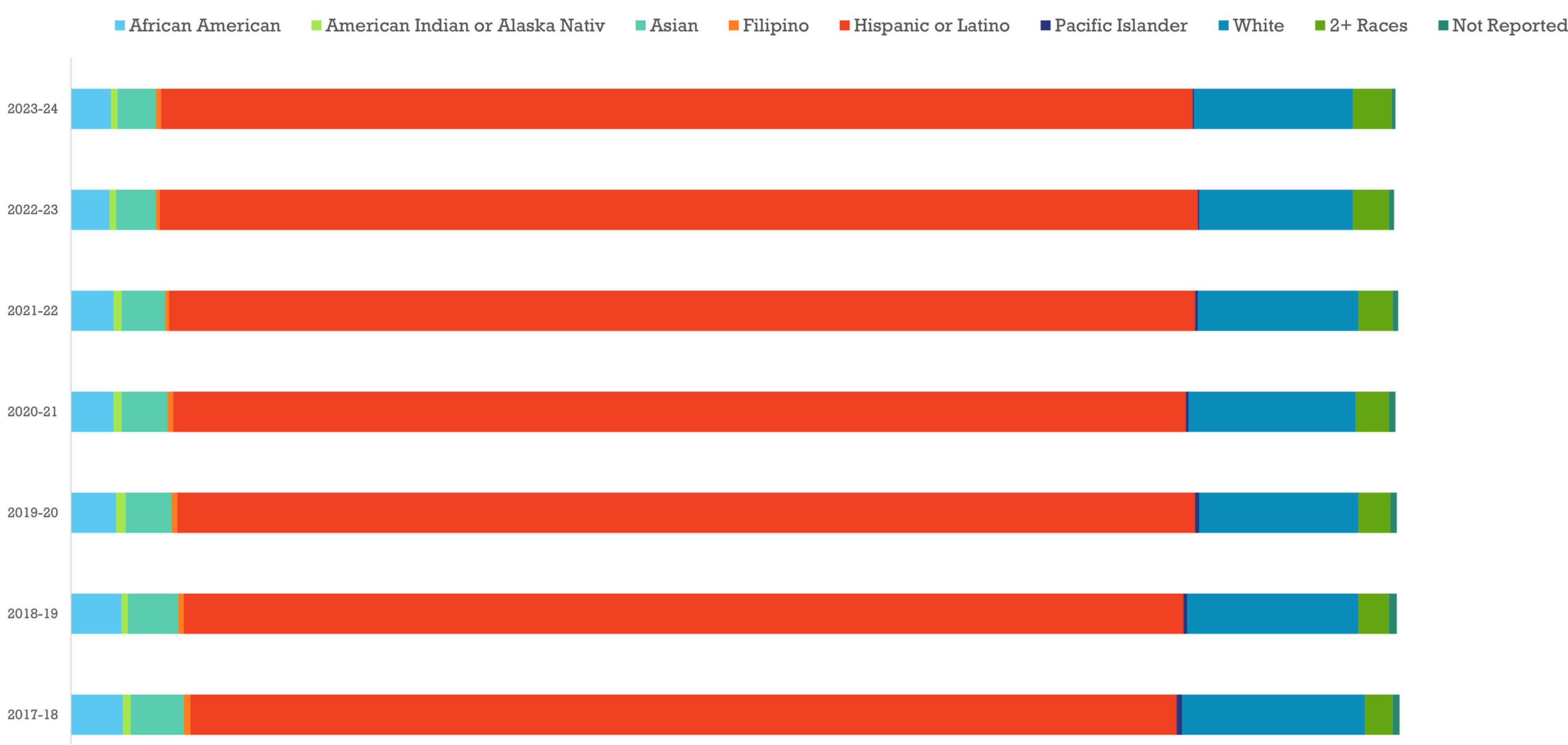


# ENROLLMENT- STUDENTS WITH DISABILITIES



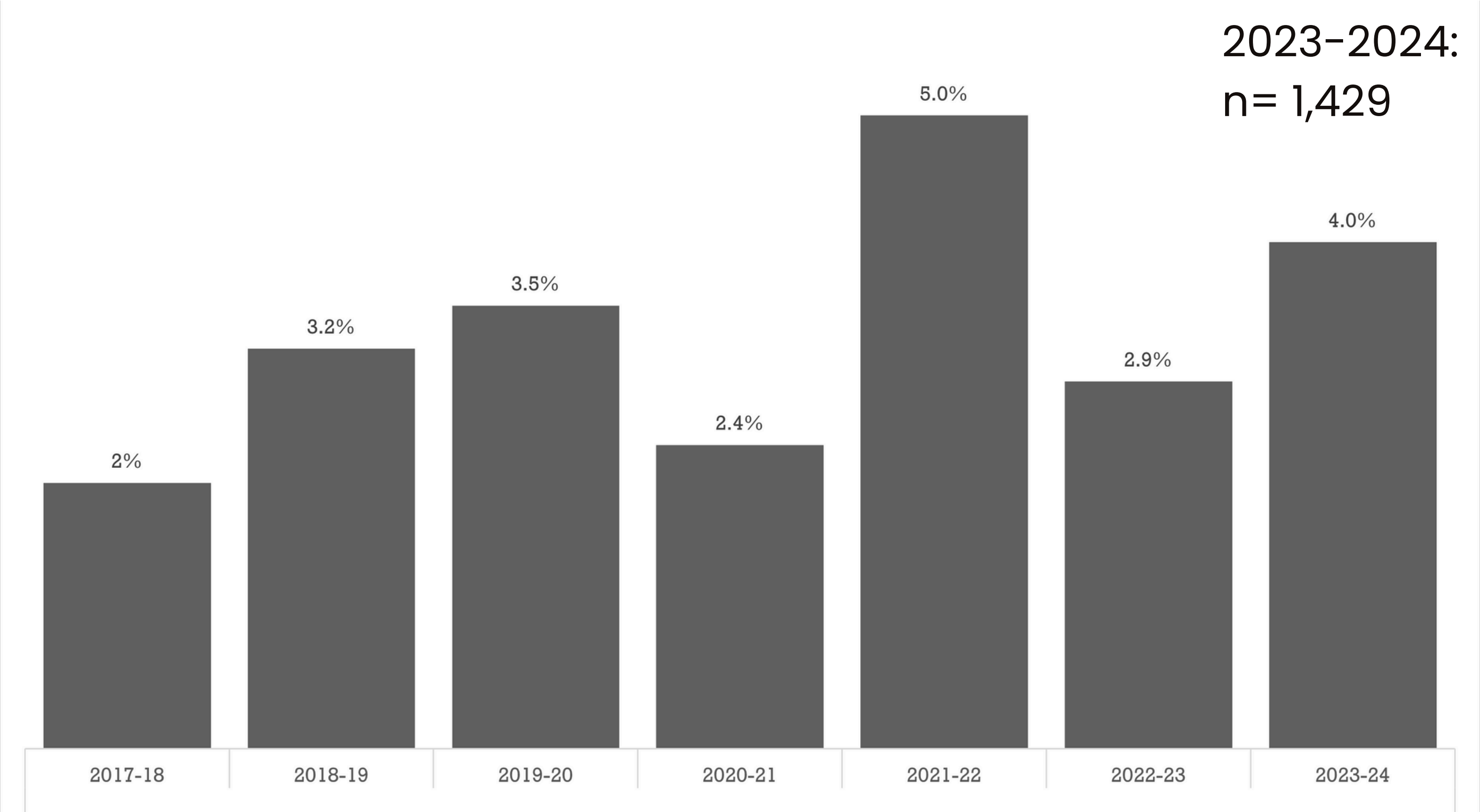


# ENROLLMENT- SOCIO-ECONOMICALLY DISADVANTAGED





# ENROLLMENT- STUDENTS EXPERIENCING HOMELESSNESS





# STUDENTS EXPERIENCING HOMELESSNESS

---

## Two Definitions

“An individual who lacks a fixed, regular, and adequate nighttime residence.”

Source	Unsheltered	Shelters	Hotels or Motels	Doubled Up
McKinney-Vento Homeless Assistance Act	●	●	●	●
U.S. Dep. of Housing & Urban Development (HUD)	●	●	⊗	⊗



# STUDENTS:

## Unduplicated:

- English Learners,
  - Eligible for Free and Reduced Lunch
  - Foster Youth
- 
- Students who are counted only once in a specific calculation, even if they meet more than one criteria
  - Used for state reporting and funding under the Local Control Funding Formula (LCFF)



A close-up photograph of two hands, one from a darker-skinned person and one from a lighter-skinned person, with fingers interlaced to form a heart shape. The hands are positioned against a plain white background.

# STUDENTS:

## **Student Achievement Gap**

- African American,
- Hispanic/Latino,
- English Learners,
- Homeless, Students with Disabilities
- Foster youth



FACT:

# Student Achievement Gap

Lower Test Scores



Lower Graduation Rate



Higher Suspension and Expulsion Rates



Higher Chronic Absenteeism Rates





The background of the slide features several hands of different sizes, each with horizontal stripes of red, yellow, green, and blue paint. The hands are arranged in a circular pattern around the central text, with some hands appearing as if they are reaching out or holding the text. The paint is thick and textured, giving it a tactile appearance.

# SYSTEMS TO SUPPORT EQUITY

## Accountability Cycle

- Assessment
- Measurement
- Plan Development



# ACCOUNTABILITY CYCLE

## Assessment

1




California Assessment of  
Student Performance and Progress



**ELPAC**  
English Language Proficiency  
Assessments for California


2

## Measurement




California School  
**DASHBOARD**

English Language Arts




Green

Mathematics




Yellow

Chronic Absenteeism



Orange

Suspension Rate



Yellow


Red  
Orange  
Yellow  
Green  
Blue



3

## Goals and Actions

Local Control and  
Accountability Plan







# ACCOUNTABILITY CYCLE

---

1

## *Assessment*



California Assessment of  
Student Performance and Progress

- English Language Arts
- Mathematics
- Science

**Assessment results for 23-24**  
**October, 2024**



- Required for all English Language learning students k- 12
- Speaking, Listening, Reading and Writing
- Used to assess English language development
  - Emerging
  - Expanding
  - Bridging



# ACCOUNTABILITY CYCLE

## Measurement



2

### California School DASHBOARD

English Language Arts



Mathematics



Chronic Absenteeism



Suspension Rate



## Online tool to display:

District and School data:

- Population
  - Enrollment
- Performance
  - Academic Performance
  - ELA/Math/Science
  - English Learner Progress
  - College and Career (9–12)
  - Academic Engagement
    - Chronic Absenteeism (k–8)
    - Graduation Rate (9–12)
  - Conditions and Climate
    - Suspension Rates

24–25 Dashboard Updated December 1, 2024

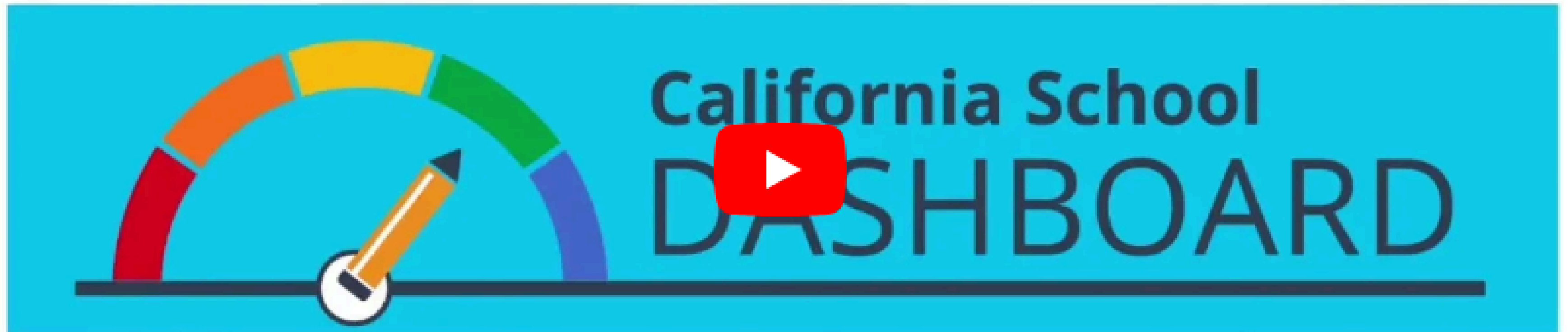




California School Dashboard - Let the Conversations Begin



Share



“Let the Conversations Begin”



# ACCOUNTABILITY CYCLE

3

## Goals and Actions

Local Control and  
Accountability Plan



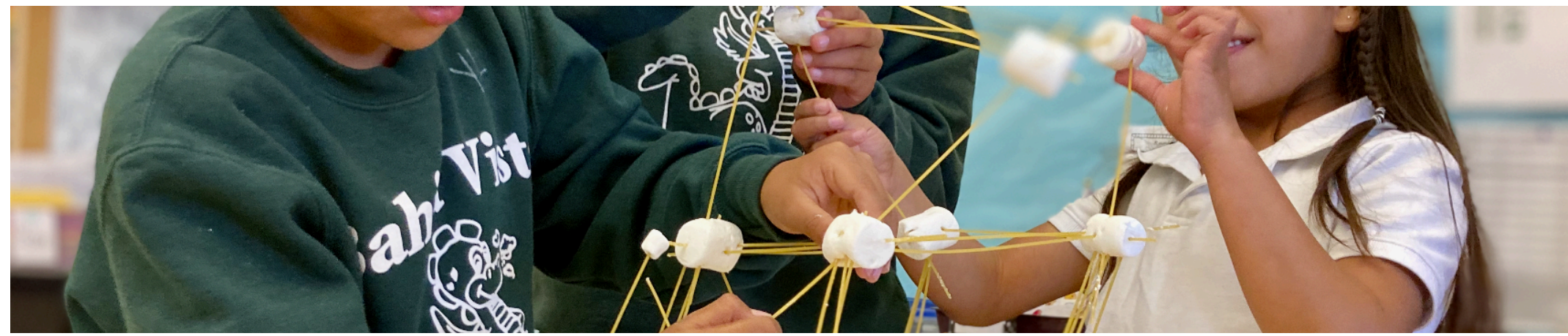
A tool for ***districts*** to:

1. Set goals,
2. Plan actions
3. Leverage resources and
4. Highlight the work for those who need more to get the same

***...to improve student outcomes***

## 3 year Plan

- Updated annually
- Describes a district and its schools vision for students, and what it will take to achieve the vision
- Requires engagement for educational partners (parents, students, educators and community)
- Focuses on 8 areas identified as state priorities
- Demonstrates:
  - How the budget will help achieve goals
  - How well strategies are able to improve outcomes





# ACCOUNTABILITY CYCLE

## *Goals and Actions*

3

### ***LCFF and LCAP***

Local Control and  
Accountability Plan



The LCAP is the Districts three-year plan to align goals and actions with budget to accomplish goals

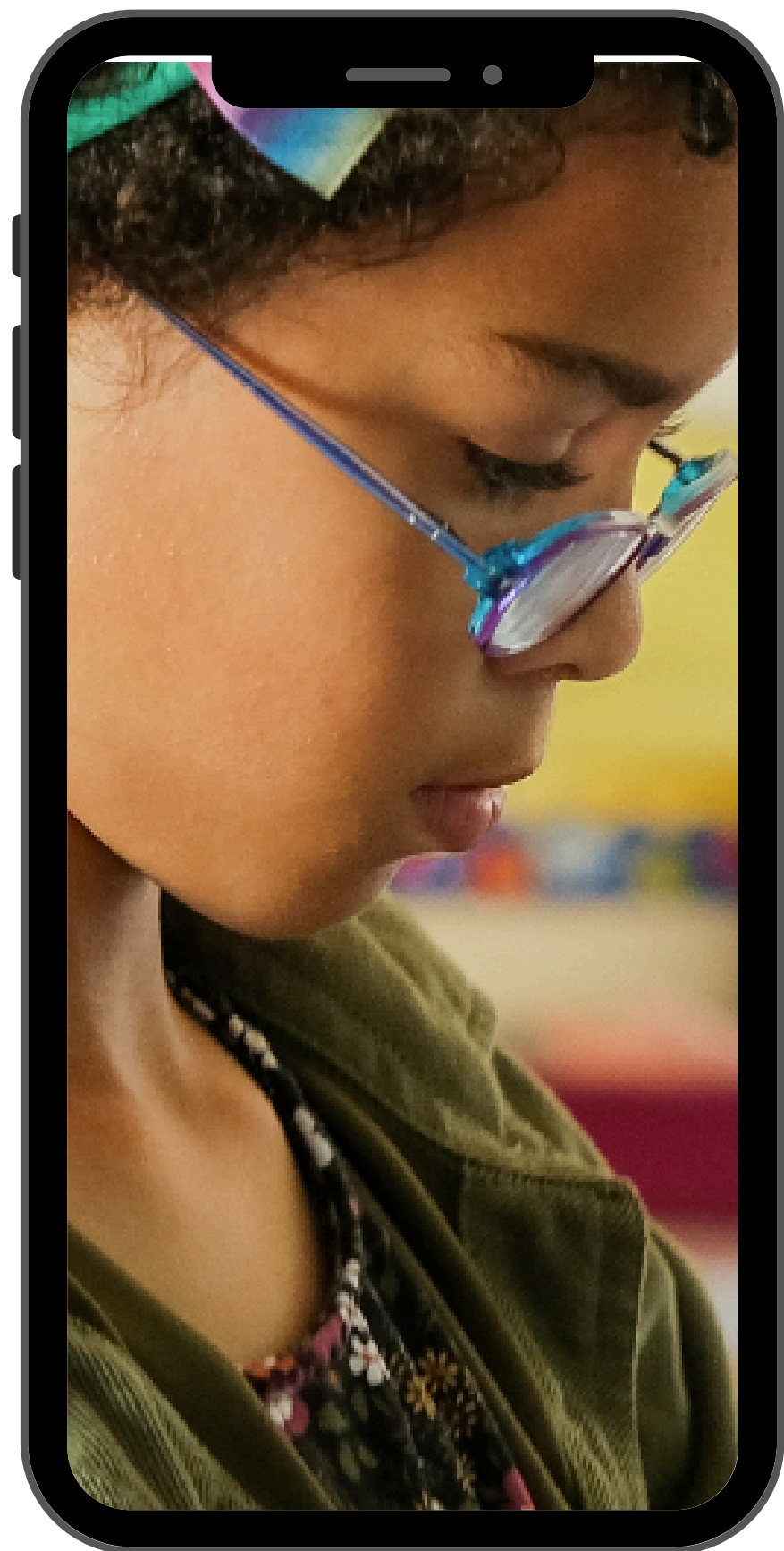
Identifies those goals, actions and services for all students and most especially those who need more to get the same

The Local Control Funding Formula (LCFF) for K-12 public schools establishes three categories by which districts receive funding:

- Per-student
- Supplemental
- Concentration







---

# THE WORK WE GET TO DO:

- Level 1 and Level 2 support
  - District perspective
-



# LEVEL 1:

---

## Support for All

**Networks**



**Professional  
Development**



**Plan Development**



**Updates**





# LEVEL 1: NETWORKS



Elementary, Middle and High School Principals



Curriculum Leads – Innovative Learning Team – Marin



Homeless/Foster Youth – Executive Advisory



Multilingual Learner



AI

Other Networks:

- K–5 Literacy Leaders
- UPK/TK
- Facilitation Techniques



LEVEL 1:

PROFESSIONAL  
LEARNING & SUPPORT



Strategies for Enhancing EL  
learning



DEIB  
Antibias



Curriculum:

- Math
- ELA - Literacy
- Art



Legal:

- SARB
- Title IX
- McKinney Vento

Trauma Informed Practices







Strategic Plans



Educational Partner  
Engagement



Local Control and  
Accountability Plans



Federal Program Monitoring and Title  
funding support



Induction – 1st and 2nd Year Educators

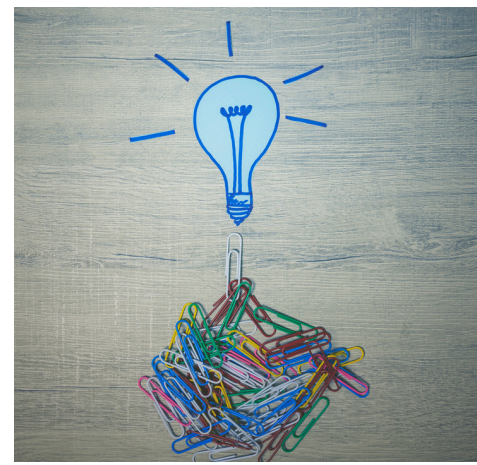
# LEVEL 1:

Plan Development  
Educator Support



# LEVEL 1:

## PLAN DEVELOPMENT & SUPPORT



Support for plan development (Single Plan, LCAP, Strategic Plan, Board Priorities)



Review of LCAPs



Facilitation for Engagement of Education Partners

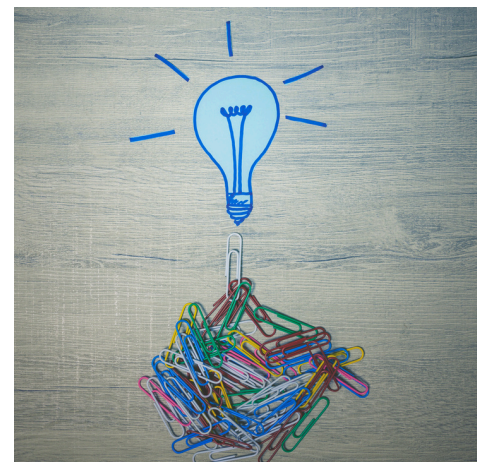


Federal Program Monitoring and Title Funding support



Phone a friend





CDE – changes to Ed Code; Legislation updates



Compliance and Accountability



Deadlines – Grants



Assessment



Student Competitions:

- Mock Trial,
- Mathletes,
- Track and Field,
- Cross Country

LEVEL 1:  
UPDATES/OTHER



# Collaboration & Relationship





# LEVEL 2:

---

## Targeted/Intensive Support

**Differentiated  
Assistance**



Red

**Williams  
Oversite**



**LCAP Support**





# LEVEL 2: Targeted/Intensive Support

---

Based upon the CA  
School Dashboard  
Results – Performance

## **District Level:**

Differentiated Assistance

## **Site Level:**

- Additional Targeted Support and
- Improvement
- Comprehensive Support and Improvement

## **Systems Look:**

- Data
- Theory of Action
- Plan





# LEVEL 2: Williams Oversight

---

## CA Dashboard:

- Student Performance
- School Climate
- Student Engagement

## Site Level:

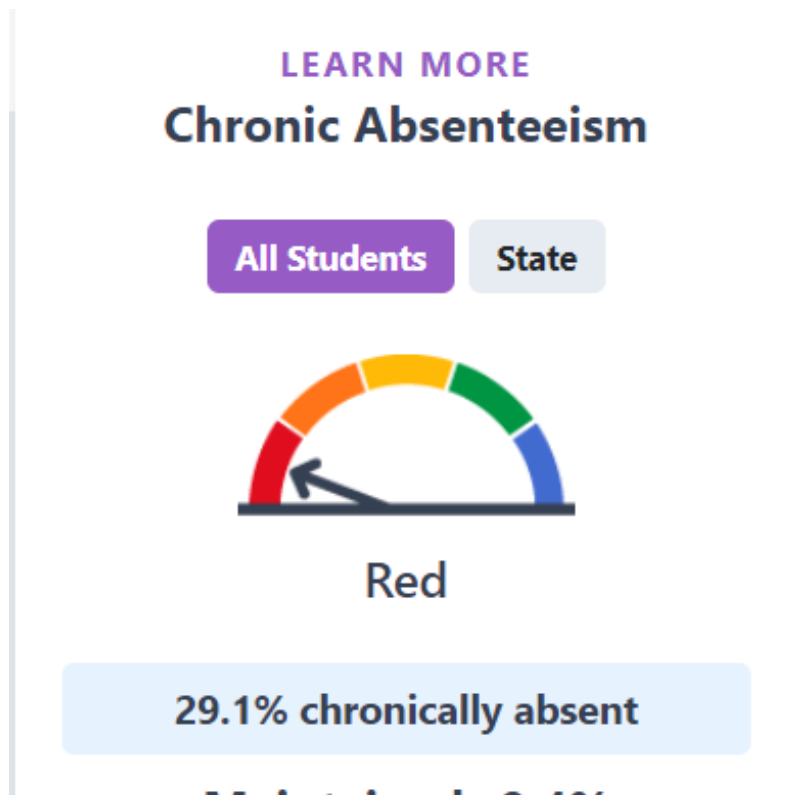
- Additional Targeted Support & Improvement
- Comprehensive Support & Improvement

## Review of Program

- Qualified teachers
- Clean and Maintained facilities
- Sufficient instructional materials

## Reporting:

- Documentation of oversight to local school board and government



# RESOURCES



## **California School Dashboard (CA Dept of Education)**

The California School Dashboard provides parents and educators with meaningful information on...

 [caschooldashboard.org](https://caschooldashboard.org)

[www.caschooldashboard.org](https://caschooldashboard.org)



<https://dq.cde.ca.gov/dataquest/>

## **Education Services - Marin County Office of Education**

 [marinschools.org](https://marinschools.org)

[www.marinschools.org/programs-services/education services](https://www.marinschools.org/programs-services/education-services)



