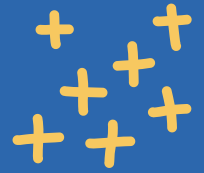
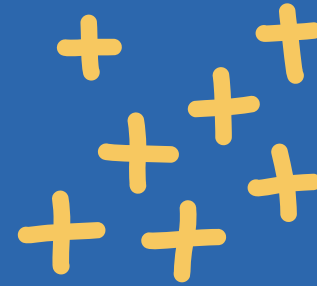


WE LOVE HAVING YOU AT SCHOOL. TOGETHER LET'S MAKE THIS SCHOOL YEAR AMAZING!



Consistent attendance is important!
Students feel more connected to their
teachers and peers and they are
more likely to stay on track.



Our goal is for each student is to
be at school, on time everyday
and not miss more than one day a
month. Missing 2 or more days
each month equals 10% of the
school year! This makes it harder
to keep up!

Questions? Concerns?
Reach out to Ms. Davis, School
Social Worker, at
denise.davis@gdrh.org or
(414) 351-7170 ext. 2142

