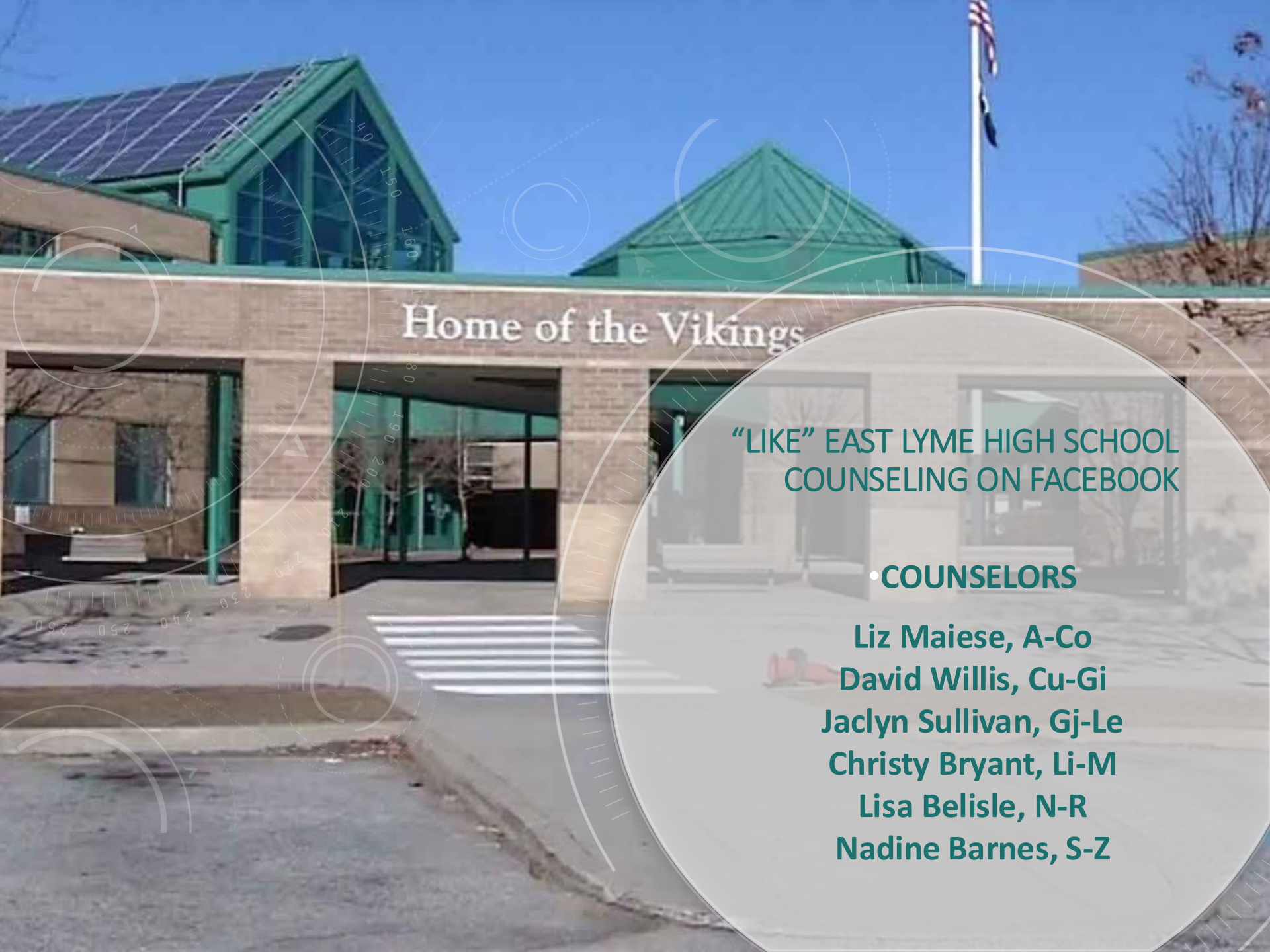




Home of the Vikings

ELHS SENIOR COLLEGE APPLICATION NIGHT

SEPTEMBER 19TH, 2024



Home of the Vikings

**“LIKE” EAST LYME HIGH SCHOOL
COUNSELING ON FACEBOOK**

• COUNSELORS

**Liz Maiese, A-Co
David Willis, Cu-Gi
Jaclyn Sullivan, Gj-Le
Christy Bryant, Li-M
Lisa Belisle, N-R
Nadine Barnes, S-Z**

ABOUT THIS PRESENTATION

An in-depth look at the college process:

- What is happening now?
- What are the next steps?



WHAT IS HAPPENING
NOW

Fall 2024

Dear Parent/Guardian,

A total of **25 credits** is required for a student to graduate in addition to earning the following credits in each area:

Courses that meet the Humanities Requirement*	English: 4 credits	Social Studies: 3.5 credits including Civics	Fine Arts: 1 credit	World Language: 2 Credits	Total: 9 Humanities Credits
Courses that meet the STEM Requirement*	Science: 3 credits	Mathematics: 3 credits	Vocational Ed: 1 credit	STEM Elective: 2 credits	Total: 9 STEM Credits
Additional Requirements	Health/Phys Ed: 2.0 credits	Mastery Experience: 1 credit	Elective Credit: 4 credits		Grand Total: 25 Credits

*Humanities electives include courses in English, Social Studies, World Language, or Fine Arts

*STEM electives could include additional Math, Science, Business Education, Family Consumer Science, Technology Education and/or Career and Technical Education classes.

As part of the **25 credit** graduation requirements, students are expected to complete the Viking Voyage Mastery Experience. Students will earn one credit upon uploading designated high school artifacts and a senior reflection in Advisory.

Credits Earned to Date: _____

Humanities Requirement: Met Not Met Required Credit(s) Remaining:

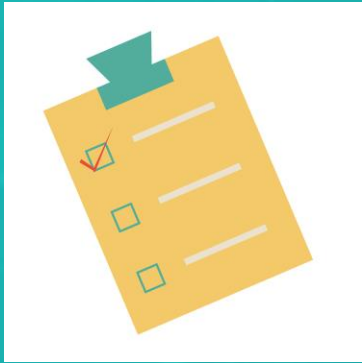
STEM Requirement: Met Not Met Required Credit(s) Remaining:

Credit	Course/ Mastery Experience	STEM	Humanities
1.0	Viking Voyage Mastery Experience	N/A	N/A
1.0	English		X

Total number of graduation requirement needed: _____ credits

SENIOR CONTRACT

- List of courses you need to meet the ELHS Graduation Requirements
- Elective is anything beyond requirement (a fourth Math, a fourth science, etc.)
- Seniors need to have 6 blocks filled on their schedules
- Contact your counselor if there is any confusion
- A signed copy will be mailed home to parents



FINALIZING A LIST OF SCHOOLS



Two or Three “*Reaches*”

Just meet the SAT & GPA Ranges



Two or Three “*Targets*”

Right in the Middle or Better



Two or Three “*Safeties*”

At the Far End or Beyond



Use Naviance Scattergrams to help determine likelihood of acceptance



Students should only apply to schools they will attend

Standardized Tests

SAT Date	Registration Deadline	Late Registration Deadline (extra fee)
Oct 5, 2024	Sep 20, 2024	Sep 24, 2024
Nov 2, 2024	Oct 18, 2024	Oct 22, 2024
Dec 7, 2024	Nov 22, 2024	Nov 26, 2024

ACT Date	Registration Deadline	Late Registration Deadline (Extra fee)
Oct 26, 2024	Sep 20, 2024	Oct 7, 2024
Dec 14, 2024	Nov 8, 2024	Nov 22, 2024
Feb 8, 2025	Jan 3, 2025	Jan 20, 2025

Test scores must be sent directly from the testing company. Test registration and score reporting can be done at:

www.collegeboard.org for SATs and www.act.org for ACTs



COLLEGE APPLICATION OPTIONS

APPLICATION DEADLINES

Early Action

Students may apply to certain colleges in 1st semester, but the decision is **Not Binding**.

Pros: If admitted, students have a “place to go” early

Cons: student must make Nov./Dec. application deadlines.



Early Decision

Students apply to a college 1st semester senior year. Deadlines: Nov. 1, Nov. 15 or Dec. 1 (depending on school).

Pros: Sometimes students have a better chance of being admitted. Notified by a published date if they were Admitted, Denied or Deferred for Regular Admission.

Cons: Students must enroll at that college if accepted. No true negotiation power for financial aid.

APPLICATION DEADLINES

Rolling Admission:

- Students apply to colleges between Nov. 1 and Regular Deadline and colleges respond in 2 – 4 weeks.
- Suggestion:
- All students apply by Dec. 1

Regular Decision:

- Students apply by deadline.
- Students notified in March-April
- Students make their decision by May 1.



THE COMMON APPLICATION

- Most colleges require electronic submission of application.
- More than 900 colleges accept the Common Application – be sure to check for supplements
- Payment is made electronically with credit card.
- Common App Tool Kit:
 - <http://www.commonapp.org/ready>
 - <http://www.commonapp.org/>

COALITION APPLICATION

Since the launch of the Coalition app in 2016, several colleges and universities across the US have been utilizing the new application platform. Currently, the Coalition app has about 150 member colleges.

While many member colleges still utilize the Common App in addition to the Coalition app, or their own institutional application, there are a small number of schools, like Virginia Tech, which use the Coalition app exclusively, meaning the Coalition app is the only college application they accept for undergraduate admission. It's important when researching colleges and creating your application timeline to make a note of what applications each institution uses.

<http://www.coalitionforcollegeaccess.org/>



The background of the slide features a dark gray circular area containing a stylized illustration of a notepad. The notepad has light blue horizontal lines and a red vertical margin line on the left. A yellow pencil with a black eraser and a sharp lead tip is positioned diagonally across the notepad, pointing towards the bottom right. The pencil has a black outline and a yellow body. The overall composition is clean and modern, with a focus on the text and the list of points.

INDIVIDUAL SCHOOL APPLICATIONS

- Most are electronic applications
- Payment is online
- School forms on Naviance still accepted
- Very few schools use paper/pencil



THE COLLEGE APPLICATION PORTFOLIO

Application
n

Includes
Essay

Transcript

Profile

Secondary
School
Report

Recommendation
s

Standardized
Test Scores

The background image shows a large, multi-story stone building with many windows, identified as Elhs College. A flag is flying from a pole on the roof. In front of the building is a green lawn and a row of parked cars. The sky is blue. Overlaid on the image are faint, light blue circular patterns and lines, resembling a compass or a technical diagram. A large, dark rectangular box is centered over the building, containing the title text in white.

THE ELHS COLLEGE APPLICATION PROCESS

A black graduation cap with a gold tassel is the central focus. The cap is positioned diagonally. A gold tassel is attached to the top of the cap. The background is dark and features faint, light gray circular diagrams with degree markings (150, 160, 170, 180, 190, 200, 210, 220, 230, 240, 250, 260) and arrows, suggesting a technical or scientific theme.

PREPARING TO APPLY

SENIOR FOLDER

Distributed during Senior English classes

Senior Transcript

Class of 2025 Senior College Checklist

Common Application Completion Guidelines

2024-2025 Common Application Essay Prompts

Recommendation Guide

SENIOR TRANSCRIPT

- A Summary of your final grades
- Credit Count
- GPAs
- List of Senior Classes (needed to fill out college applications)

STUDENT:

PAR/GUAR:

ADDRESS:

PHONE:

GENDER: E

SASID:

DOB:



East Lyme High School

30 Chesterfield Road

East Lyme, CT 06333

PHONE: (860)739-6946

01/24/2024

GRADUATION DATE: 06/15/2023

School No.: 070177

COURSE AND GRADE HISTORY						CREDITS EARNED BY REQUIREMENT	
COURSE	FINAL	CREDITS	COURSE	FINAL	CREDITS	SUBJECT	CREDITS
GR. 09 2019-2020 East Lyme High School			GR. 10 2020-2021 East Lyme High School			English	4.00
FRESHMAN ACADEMY/HEALTH	B	0.50	SPECIAL NEEDS AIDE	B+	0.50	Fine Arts	0.50
DESIGNING YOU AND YOUR SPACE	A+	0.50	CULINARY ARTS I	A+	0.50	Health/Phys Ed	2.00
ENGLISH 9 A	B+	1.00	BIRTH-THREE PLAYGROUP	A+	0.50	Mastery-Based Diploma Assessment	1.00
FRENCH II H	A	1.00	ENGLISH 10 A	B	1.00	Mathematics	3.00
FRESHMAN PHYS ED	P	0.50	MUSIC COOP	A+	0.50	Other	0.50
ALGEBRA I A	B-	1.00	FRENCH III H	A-	1.00	Science	3.50
INTEGRATED SCIENCE A	B-	1.00	GEOMETRY A	C	1.00	Social Studies	4.50
MODERN WORLD A	B	1.00	BIOLOGY A	B+	1.00	Vocational Education	6.00
		6.50	BUSINESS MANAGEMENT	A-	0.50	World Language	3.00
			AMERICAN HISTORY 1865-1945 I A	B	1.00	TOTAL	28.00
					7.50		
GR. 11 2021-2022 East Lyme High School			GR. 12 2022-2023 East Lyme High School			ACADEMIC STANDING	
SPEECH COMMUNICATIONS	B+	0.50	FORENSIC SCIENCE	B	0.50	AT END OF	WEIGHTED GPA CUM UNWEIGHTED GPA
AMERICAN HIS 1945-PRESENT II A	B-	0.50	HUMAN RIGHTS	A	0.50	Sem 6	3.16 3.26
ENGLISH 11 A	B	1.00	PRE-SCHOOL LAB	A+	0.50	RECOGNITIONS	
FRENCH IV A	B-	1.00	IND STUDY PRE-SCHOOL INTRNSHP	A+	0.50	Career Concentration-Education	
ALGEBRA II B	C+	1.00	ENGLISH 12 ECE	A-	1.00	Career Concentration-International Studies	
CHEMISTRY A	C-	1.00	SPECIAL NEEDS AIDE	A-	0.50		
AMERICAN CIVICS A	B-	0.50	PERSONAL FINANCE	A-	0.50		
AP PSYCHOLOGY	B-	1.00	BAKING & PASTRY	A+	0.50		
PRE-KINDERGARTEN LAB	A+	0.50	HUMAN DEVELOPMENT ECE	A-	1.00		
		7.00	IND STUDY PRE-SCHOOL INTRNSHP	A+	0.50		
			VIKING VOYAGE	P	1.00		
					7.00		



East Lyme High School Profile 2024-2025

30 Chesterfield Road
East Lyme, CT 06333

Phone: (860) 739-6946
Fax: (860) 691-4623

CEEB # 070177
www.eastlymeschools.org

Mission

The East Lyme High School experience prepares students academically, emotionally, and socially to be positive forces in the world and to live responsible, purposeful, and healthy lives.

The School

East Lyme High School is a four-year comprehensive public high school offering curricular and co-curricular programs to 894 students in grades nine-twelve. Accredited through the New England Association of Schools and Colleges, the school offers an extensive range of courses in college and career preparation. East Lyme High School employs six school counselors and 110 faculty.

The Community

East Lyme High School rests in a residential community of 18,645 with its students residing in the towns of East Lyme, Niantic and Salem. Located in New London County along the shoreline, the school is equidistant from New Haven and Providence, RI and is easily accessible via Interstate 95.

Pathways

The goals of the Pathways Programs at ELHS are to advance student learning with community-based experiences, increase capacity in the Career and Technical Education programming, and support students in their post-secondary learning and career choices.

School Counselors

Elizabeth Maiese, A-Co
elizabeth.maiese@elpsk12.org

David Willis, Cu-Gi
david.willis@elpsk12.org

Jaclyn Sullivan, GJ-Le
jaclyn.sullivan@elpsk12.org

Christy Bryant, Li-M
christy.bryant@elpsk12.org

Lisa Belisle, N-R, CIL
lisa.belisle@elpsk12.org

Nadine Barnes, S-Z
nadine.barnes@elpsk12.org

Ms. Deb Roselli Kelly
Principal- 2024

Mr. Jeffrey Newton
Superintendent

Mr. Henry Kydd
Principal- 2025

Counseling Office x-5580

Registrar-x-5512

School Highlights

- 2024 Connecticut National Science Bowl Competition Winner
- Second place in National Marching Band Competition
- Bronze Award Math Olympian
- Ten Drama Award Nominations and two award winners
- Ranked #2 2024 Niche Best College Prep Public Schools in New London County
- Ranked 3rd in 2023 US News and World Reports Norwich, CT Metro Area High Schools
- Three 2024 graduates employed at Electric Boat

Graduation Requirements and Career Concentrations

Credit Requirements

English.....4.0
Social Studies...3.5
Math.....3.0
Science.....3.0
Language.....2.0
PE/Health.....2.0
Fine Arts.....1.0
Vocational Ed...1.0
Electives.....4.0
Mastery Experience...1.0

Course Levels

AP- Advanced Placement
H - Honors
ADV CCP – Advanced College and
Career Preparatory
CCP - College and Career Preparatory

*Additional information can be found in
our Program of Studies on the ELHS*

25 Total Credits to Graduate

AP Classes Offered

Biology, Calculus AB, Calculus BC, Chemistry, Computer Science, Environmental Science, Government, Language & Composition, Literature & Composition, Mobile Computer Science, Music Theory, Physics 1 & 2, Psychology, Research, Seminar, Statistics, Studio Art, US History, World History

UConn ECE Courses Offered

Applied Mechanics, Calculus BC, EMT Training, English 12 1004, English 12 1007, French V, German IV, Human Development, Medical Terminology, Physics 1 & 2, Public Speaking, Spanish V

Honors Classes Offered

Algebra II, Anatomy/Physiology, Astronomy, Band, Biology, Catering and Hospitality, Chemistry, Concert Choir, Digital Film, Digital Journalism, English 10, Foundations of Calculus, French, Geometry, German, Graphics, Human Development, Journalism, Orchestra, Pre-Calculus, Spanish

College Partnerships and Special Programs

University of Connecticut Early College Experience (ECE)- allows motivated students to take UCONN courses at their high schools for both high school and college credit.

New London Scholars Program- allows students to take entry level college courses on the Connecticut College campus.

High School Partnership (HSP)- allows students to take entry level college courses on the Three Rivers Community College campus.

Independent Study- allows the student the opportunity to study a subject beyond what is available within the present curriculum. The student will design a plan, timeline and curriculum with an overseeing teacher who will assess them on a pass/fail basis.

EAST LYME HIGH SCHOOL PROFILE

Class of 2025 Senior College Application Checklist

Begin completing this checklist two – four weeks prior to your application deadline.

Naviance Tasks:

- ☐ Login to Naviance: Under the “About Me” tab, click on Account, ensure your info is up to date
- ☐ Complete your Resume on Naviance “About Me”, “Resume”

Letters of Recommendation: (provide at least two weeks notice)

- ☐ For teacher letter: Request a letter of recommendation in-person:
 - Complete the request on Naviance by clicking “Colleges” then “Colleges I’m applying to” and then click on “Letters of Recommendation” and choose your teacher from the drop-down menu.
- ☐ For counselor letter: If required by the college or university, request a letter of recommendation from your counselor via email/in-person (keep in mind not all schools require a counselor letter of recommendation):
 - Complete the request by using the electronic form found on the Class of 2025 Google Classroom page called “School Counselor Recommendation Form”



STUDENT RESPONSIBILITIES:
PRIOR TO YOUR APPLICATION



SCHOOL COUNSELOR LETTER OF RECOMMENDATION REQUEST 2024-2025

B *I* U  

Please allow a minimum of 14 days for your recommendation to be written/uploaded.

Your resume **MUST BE COMPLETED** prior to form submission.

An aerial photograph of a college campus during autumn. The image shows a large, multi-story brick building with many windows, a tall clock tower with a pointed roof, and a parking lot filled with cars. The campus is surrounded by trees with colorful foliage in shades of orange, yellow, and green. In the background, there are rolling hills and a small white church with a steeple. The text "APPLYING TO COLLEGE" is overlaid in the center of the image.

APPLYING TO COLLEGE



STUDENT RESPONSIBILITIES: APPLYING

Applying:

- ☐ Apply to the college or university electronically via Commonapp, Coalition, college website, or paper copy (*Refer to Class of 2025 Common App Completion Guidelines document found in the Class of 2025 Google Classroom page with help in completing the application). Pay and submit your application.

Sending SAT/ACT scores:

- ☐ Send test scores, if required by the college or university (keep in mind that it can take up to two weeks for scores to arrive to colleges) Request to have your SAT and ACT scores sent directly to your colleges by:
 - ☐ SAT www.collegeboard.org (Test scores will not be on your transcript)
 - ☐ ACT www.actstudent.org (Test scores will not be on your transcript)

Sending Transcripts/Letters of Recommendation:

- ☐ Match your account on Naviance by clicking “Colleges I’m applying to”, Match Account, and fill in the information requested
- ☐ Request your transcripts on Naviance by clicking under the “Colleges” then Colleges I’m applying to” then click on “Request Transcripts” and by emailing: ccc@elpsk12.org The following will be sent by our registrar, Ms. Freeman, once both steps are completed:
 - Transcript with grades (No test scores!)
 - Recommendations and School Report on Naviance
 - High School Profile, 1st Quarter, Midterm & Final grades

ELHS Deadline to Request Transcript:	College Submission Deadline
October 25, 2024	November 1, 2024
November 8, 2024	November 15, 2024
November 27, 2024	December 1, 2024

STUDENT
RESPONSIBILITIES:
SENDING
TRANSCRIPTS



STUDENT RESPONSIBILITIES: FOLLOW-UP

Financial Aid/Scholarships:

- ☐ Remember to send a thank you note to each person that wrote a recommendation letter for you!
- ☐ Financial Aid: Complete the FAFSA or CSS Profile
- ☐ Scholarships: links located on Naviance and on the Class of 2025 Google Classroom page

Class of 2025 Common Application Completion Guidelines

1. Login or create an account on Common App www.commonapp.org
2. Add a college under "My Colleges" tab
 - Go to college search – add college by clicking the check box and "Add" + Icon
3. Go to "Common App" tab
 - Sections of the application are on the left-hand side. In order to send application documents from ELHS, the education section must be completed. Below are the instructions:
 - Click on "Education" and answer questions accordingly:
 - o Click find school: Add East Lyme High School (CEEB code: 070177)
 - o Date of entry: August 2021
 - o Boarding School: No
 - o Did you or will you graduate from this school: Yes
 - o Please indicate if any of these options will have affected your progression through or since secondary/high school. Check all that apply: Most likely it will be "no change in progression"

Continue:

- o Other Secondary schools: If you have attended any other high schools, please indicate. If not, select 0

Continue:

- o If you have ever taken coursework at a college or university, please indicate the number of colleges.
 - Indicate number if you are **currently enrolled or have taken** an ECE Course or if you are a College & Career Pathway student through Three Rivers for courses listed below:

ECE Courses (University of Connecticut)	CCP Courses (Three Rivers Comm College)
Human Development Honors ECE	Pre-K
*AP Calculus BC/ECE	CAD II
French V ECE	
Spanish V ECE	
German IV ECE	
Medical Terminology ECE	
English 12 H/ECE	
*AP Physics I ECE	
AP Physics II	
Applied Mechanics ECE	

Continue:

- o Grades
 - Graduating Class Size: 244
 - Class Rank: None
 - GPA Scale: 4
 - Cumulative GPA: (listed in Naviance: Click Blue circle on the top right corner then "My Account" for on transcript)
 - GPA weighting: unweighted

Continue:

- o Current or Most Recent Year Courses
 - How many courses would you like to report? List the number of courses listed on your schedule. Include both first and second semester courses.
 - Course scheduling system: Semester
 - Add the name of your class exactly as indicated on your schedule
 - Select correct levels based on the grid below:

Course levels listed on your schedule	Enter in Common App
Advanced Placement	Advanced Placement
ECE (including AP Calc BC)	Dual Enrollment
Adv CCP level	Advanced
CCP level	College Prep
Courses without a level on your schedule (i.e. Electives, PE, etc)	Regular/Standard

Continue:

- o Honors
 - Beginning with 9th grade add any academic awards you have received

Continue:

- o Community Based Organization: Review list, but generally 0

Continue:

- o Future Plans:
- o Select: Applying as a first-year student and plan to start college in 2025 or 2026
 - Select career interest
 - Associate's = 2 year
 - Bachelor's = 4 year
 - Master's = Beyond a 4 year degree

4. Next step:

- o Complete FERPA by selecting a college on "My Colleges" tab
- o Check "Recommenders and FERPA" on the left-hand side
- o Click on Complete Release Authorization and follow instructions
- o WAIVERS CANNOT BE RESET ONCE LINKED

5. Login to Naviance

- o Click on "Colleges"
- o Click on Colleges I'm Applying To
- o Click on Match Accounts
- o Scroll down to enter email address from Common App and date of birth
- o Hit Match

Please select one: *

- ☐ I waive my right to review all recommendations and supporting documents.
- ☐ I DO NOT waive my right to review all recommendations and supporting documents.
- ☐ I understand that my waiver or no waiver selection above pertains to all colleges to which I apply and that my **selections on this page cannot be changed once I sign and click Save below.***



TIPS FOR COMPLETING APPLICATIONS

Read

- First, read the directions

Email

- Obtain appropriate personal email address

Consistency

- Be Consistent: Names (no nicknames), Facts

Accuracy

- Be Precise: Names, Addresses, School Code: 070177, GPA, Social Security #

Directiveness


- Be Succinct: Provide only what is asked, and leave out activities that occurred before grade 9

Thoroughness

- Be Thorough: Use your resume to list up to 10 extracurricular activities, highlight leadership roles, volunteerism, and work

Save

- Be Safe: keep a copy of everything sent and save your e-mail correspondence

A close-up photograph of a person's hand holding a silver and black pen, writing in a small, open notebook. The background is blurred, showing what appears to be a classroom or study area with other people and papers.

TIPS FOR COMPLETING THE ESSAY

Make “Optional”
Mandatory

1 ➤ Talk with an adult
(English teacher,
parent, counselor)

2
↓
Answer the
Question

3 ➤ Be Honest

4
↓
Be Creative

5 ➤ Write about more
than just the facts

6
↓
Watch Your
Language

7 ➤ Proofread, Spell
Check, Proofread



NEXT STEPS: BEYOND THE APPLICATION

CONNECTICUT AUTOMATIC ADMISSION PROGRAM (CAAP)

- The Connecticut Automatic Admissions Program (CAAP) offers eligible students automatic admission to participating Connecticut Colleges and Universities based on high school grade point average (CAAP GPA) and/or percentile class ranking, both calculated using the College Board's formula for calculating GPA.
- Automatic admission means that a student who qualifies may choose to complete a simplified, free application for each of the colleges and universities participating in CAAP to which the student qualifies. The student will automatically receive a letter of acceptance and details about financial aid awarded from the college/university.
- Students who are eligible for CAAP based on their recalculated CAAP GPA will be notified directly by ELHS
- There is no fee to apply through CAAP
- If you are eligible for CAAP and have already submitted an application and paid the application fee, you must contact that college/university and notify them of your eligibility for CAAP in order for them to issue you a refund. You will need to provide them with the letter of eligibility.
- Create a Common App Account
[Create](#) a Common App account or [log in](#) to an existing Common App account. Set your communication preferences so that: "Common App may communicate with me by email, phone or text message..." This allows Common App to send your CAAP auto-admission information.

COST

- Financial Aid: Complete the FAFSA or CSS Profile - Uses Prior-Prior year taxes (2023)
- Scholarships: Naviance (under “colleges” tab and select “Scholarship and Money” then select “scholarship list”, www.fastweb.com, etc. Posted on Class of 2025 School Counseling Google Classroom.
- Net Price Calculator on each school’s website

USERNAMES AND PASSWORDS

* PLEASE COME TO COUNSELOR MEETING WITH THIS INFORMATION

COLLEGEBOARD (AP, SAT, PSAT) <https://www.collegeboard.org/>

Username: Username should have 6-15 characters, made up of letters and numbers.

Password: Your password must be 9-30 characters with at least one upper case letter, one lower case letter, one number and one special character (no spaces) and be different than your username.

Associated with personal email address

NAVIANCE student.naviance.com

Username: personal email address

Password: Naviance Journal

COMMONAPP <https://apply.commonapp.org/login>

Username: personal email address

Password: minimum 8 characters: uppercase, lowercase, number, and special character required

FINANCIAL AID NIGHT

- Oct 26th 6:30 ELHS Auditorium
- Presentation put on by Patricia Buono, representative from Connecticut College Financial Aid Night
- This presentation walks families through the FAFSA completion

DON'T FORGET!

College Fair Field Trip September 26, 2024

University of New Haven



*Mark your
calendar!*

ELHS Deadline to Request Transcript:	College Submission Deadline
October 25, 2024	November 1, 2024
November 8, 2024	November 15, 2024
November 27, 2024	December 1, 2024