

Parent Training: Assistive Technology for Students

Empowering Students with Tools for Success

Presented by: Dr. Laurel Keegan, Special Education Director,
Southern Fulton School District

What is Assistive Technology?



- ASSISTIVE TECHNOLOGY (AT) IS ANY DEVICE, SOFTWARE, OR EQUIPMENT THAT HELPS STUDENTS WORK AROUND CHALLENGES.



- AT CAN BE LOW-TECH (E.G., PENCIL GRIPS) OR HIGH-TECH (E.G., SPEECH-TO-TEXT SOFTWARE).

Legal Basis for Assistive Technology in Schools

- IDEA (Individuals with Disabilities Education Act) requires that assistive technology be considered in the IEP process.

- Schools are obligated to provide AT if it supports the student's educational needs.

Types of Assistive Technology



- **LOW-TECH: TOOLS LIKE SLANT BOARDS, GRAPHIC ORGANIZERS, AND TACTILE RULERS.**



- **MID-TECH: AUDIO RECORDERS, CALCULATORS WITH LARGE BUTTONS, AND SPELL CHECKERS.**



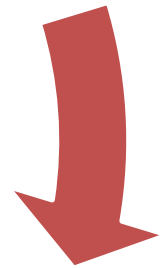
- **HIGH-TECH: TABLETS, COMMUNICATION DEVICES, AND SCREEN READERS.**

Benefits of Assistive Technology

- Reduces frustration and increases confidence



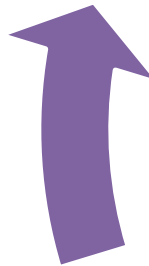
- Enhances learning and independence



- Provides access to the general education curriculum



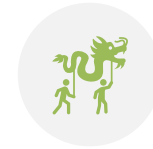
- Supports communication and social interaction



Examples of Assistive Technology Tools



- Text-to-Speech software (e.g., Read & Write, Natural Reader)



- Speech-to-Text tools (e.g., Dragon NaturallySpeaking)



- Augmentative and Alternative Communication (AAC) devices (e.g., Dynavox)



- Adaptive keyboards and mice



- Math support tools (e.g., talking calculators)

Integrating Assistive Technology into the IEP

- Assessing the student's needs through evaluations

- Selecting AT devices or software that fit the student's learning profile

- Including AT goals and services in the IEP

- Monitoring and adjusting the use of AT as needed

How Parents Can Support the Use of Assistive Technology

- Learn about the AT tools your child uses

- Encourage the use of AT at home for homework and communication

- Attend IEP meetings and share observations on how AT is helping or what adjustments are needed

Resources for Assistive Technology

- ATIA (Assistive Technology Industry Association):
www.atia.org

- Center on Technology and Disability:
www.ctdinstitute.org

- Local Assistive Technology Lending Libraries

- Parent Training and Information Centers

Q&A

- Please contact Dr. Laurel Keegan if you have any questions.

Thank You



- CONTACT FOR FOLLOW-UP
QUESTIONS OR ADDITIONAL SUPPORT

LKEEGAN@SFSD.K12.PA.US