

HAYWARD UNIFIED SCHOOL DISTRICT
CALIFORNIA ELECTIONS CODE 21130(f) REPORT ISSUED ON SEPTEMBER 16, 2024
ADOPTION OF MAP A TO TRANSITION TO BY-DISTRICT TRUSTEE ELECTIONS

On August 27, 2024, the Alameda County Committee on School District Organization (“County Committee”) approved the Governing Board of the Hayward Unified School District (“HUSD”)’s “Map A” in order to transition from at-large to by-district trustee elections of its school board members. The purpose of this transition is to establish single member voting districts in a manner consistent with the intent and purpose of the California Voting Rights Act (“CVRA”) and the Federal Voting Rights Act, to implement the by-district election structure for use in all Board elections subsequent to the November 2024 election, and to act in accordance with the best interests of HUSD as a whole.

Currently, all voters in the entire district choose all five Trustees for school board elections. Starting with the 2026 election, the school district will divide into five voting districts. Voters in each district will choose their Trustee to represent their district. There are five basic criteria used for drawing Trustee Areas (ranked in order of importance): 1) Equal population; 2) Compliance with the Voting Rights Act (federal); 3) Contiguity; 4) Respect for neighborhoods and Communities of Interest (“COI”) (informed by soliciting public input at District-hosted meetings); and 5) Geographic Compactness. The District’s compliance with the criteria of the CVRA was ensured by the demographer team at Q2 Data & Research, LLP who held several public meetings to solicit feedback about Communities or Interest and then drew maps that adhered to all applicable legal requirements. Among the many safeguards Q2 adopted to ensure compliance with the FAIR MAPS Act, all interests of incumbents, candidates, and/or political parties were disregarded when drawing Trustee Areas.

The District Board’s 2024 redistricting schedule for complying with the California Voting Rights Act and selecting a new maps was as follows:

- May 8 - Public Hearing 1: Education / Public Comment
- May 22 - Public Hearing 2: Public Comment / Initial Instructions
- May 23 - Workshop for public input to develop COIs.
- May 29 – Publish Maps A and B
- June 12 - Public Hearing 3: Present First Drafts of Maps A and B / Public Comment / Final Instructions
- June 19 – Publish Map C
- June 24 - Workshop for public input to develop COIs, Cherryland Elementary School
- June 26 - Public Hearing 4: Present Final Draft Maps for public comment; Adopt Map A for the Alameda County Committee on School District Organization to consider and establish as the final District boundaries.

Throughout its process, HUSD reached out to the community with major releases via community email messages, public meetings, community workshops, and social media posts in order to solicit public input. Using that input, the District’s demographer team established the following five single-member district to make up “Map A,” which is attached to this report and available online at the District’s dedicated redistricting website and reflects these Districts:

- District 1 was made by combining the elementary school attendance areas and using feeder patterns of the Longwood, Burbank, and Park elementary schools.
- District 2 was kept intact as a west Hayward COI.
- District 3 combines the unincorporated areas of Cherryland, Castro Valley, and Fairview in a single district and maintains the Cherryland elementary school attendance area.
- District 4 was made up of the Glassbrook/Tyrrell/Tennyson COIs, but is split to comply with the equal population requirement.
- District 5 is an east Hayward COI and was kept whole in Map A.

The following table describes “as to each neighborhood, community of interest, city, or census designated place that was split into two or more districts, the reason for that split”:

Split	Reasoning
City/Census Designated Places	
City of Hayward	Split for equal population reasons
City Neighborhoods as Adopted by the Hayward City Council¹	
Upper B Street	Minor split to follow major road B Street
Burbank	Minor split to follow major road A St per community input; mirrors the Burbank Elementary School attendance area
Santa Clara	Minor split to follow major road A St; mirrors the Burbank Elementary School attendance area
Tennyson / Alquire	Split to follow the Palma Ceia Elementary School and RUUS Elementary School attendance area boundary
Mission / Garin	Minor split to follow major road Mission Blvd
Mission Foothills	Minor split to follow major road Mission Blvd
Elementary School Attendance Areas	
Fairview Elementary School	Split follows boundary of City of Hayward and unincorporated Fairview and Castro Valley
East Ave Elementary School	Minor split to follow major road Mission Blvd
Stonebrae Elementary School	Minor split to follow major road Mission Blvd

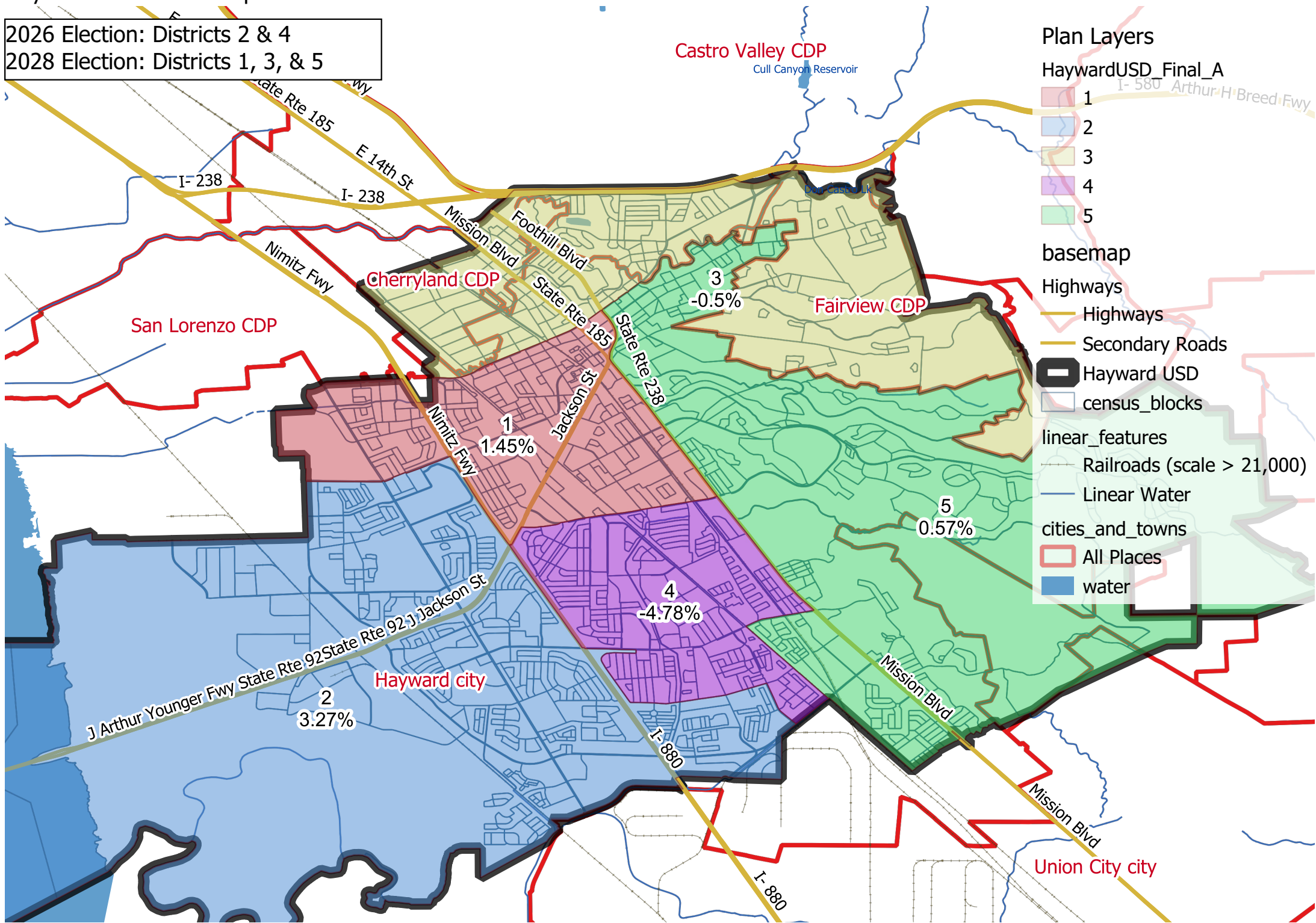
¹ Please note that some neighborhood boundaries do not follow census geography

Harder Elementary School	Split to follow major roads population needs, following major roads Mission Blvd and Harder Rd.
Tyrrell Elementary School	Minor split to follow major roads Mission Blvd and Tennyson Rd
Treeview Elementary School	Minor split to follow major roads Mission Blvd and Tennyson Rd
Burbank Elementary School	Minor split to follow major road A St per community input; mirrors the Burbank Elementary School attendance area

Map A has seen strong community support, keeps unincorporated areas largely intact, accommodates school feeder patterns/COIs as much as possible, accommodates other submitted COIs, meets the technical requirements of CVRA, and complies with spirit of CVRA. With the County Committee’s approval, the HUSD will coordinate with the Alameda County Office of Elections to schedule by-trustee area elections in two areas (Areas 2 and 4) for the November 2026 election, and in three areas (Areas 1, 3, and 5) at its November 2028 election (Education Code § 35012; Elections Code § 10010(b).)

Hayward USD - Final Map A

2026 Election: Districts 2 & 4
2028 Election: Districts 1, 3, & 5



Plan Layers

HaywardUSD_Final_A

- 1
- 2
- 3
- 4
- 5

basemap

- Highways
- Secondary Roads
- Hayward USD
- census_blocks

linear_features

- Railroads (scale > 21,000)
- Linear Water

cities_and_towns

- All Places
- water

Hayward Unified School District - Final Map A

Final Map A - District	Total Population	Deviation	% Deviation	Total Citizen Voting Age Population	Total Registration as of Nov 2022
1	37,807	540	1.45%	20,167	16,230
2	38,484	1,217	3.27%	26,867	21,087
3	37,080	-187	-0.50%	23,825	19,132
4	35,484	-1,783	-4.78%	20,114	15,176
5	37,478	211	0.57%	27,109	19,623

Source: CA Adjusted 2020 Census Data, Citizen Voting Age Population Data, and Nov 2022 Registration Data via the CA Statewide Database

Citizen Voting Age Population						
Final Map A - District	% Latino CVAP	% White CVAP	% Black CVAP	% Indigenous CVAP	% Asian CVAP	% Hawaiian or Other Pac. Is. CVAP
1	39.2%	16.7%	13.5%	0.5%	27.3%	1.3%
2	29.0%	16.1%	9.2%	0.7%	41.9%	2.0%
3	26.9%	35.2%	19.7%	0.6%	15.4%	1.3%
4	38.8%	16.7%	9.9%	0.3%	26.5%	4.8%
5	22.7%	28.6%	14.3%	0.9%	31.0%	1.7%

Source: Citizen Voting Age Population (CVAP) Special Tabulation from the 2018-2022 5-Year American Community Survey via CA Statewide Database

Note: Racial and ethnic characteristics of the Citizens Voting Age Population (CVAP) are tabulated according to Department of Justice standards.

2026 Election: Districts 2 & 4
2028 Election: Districts 1, 3, & 5