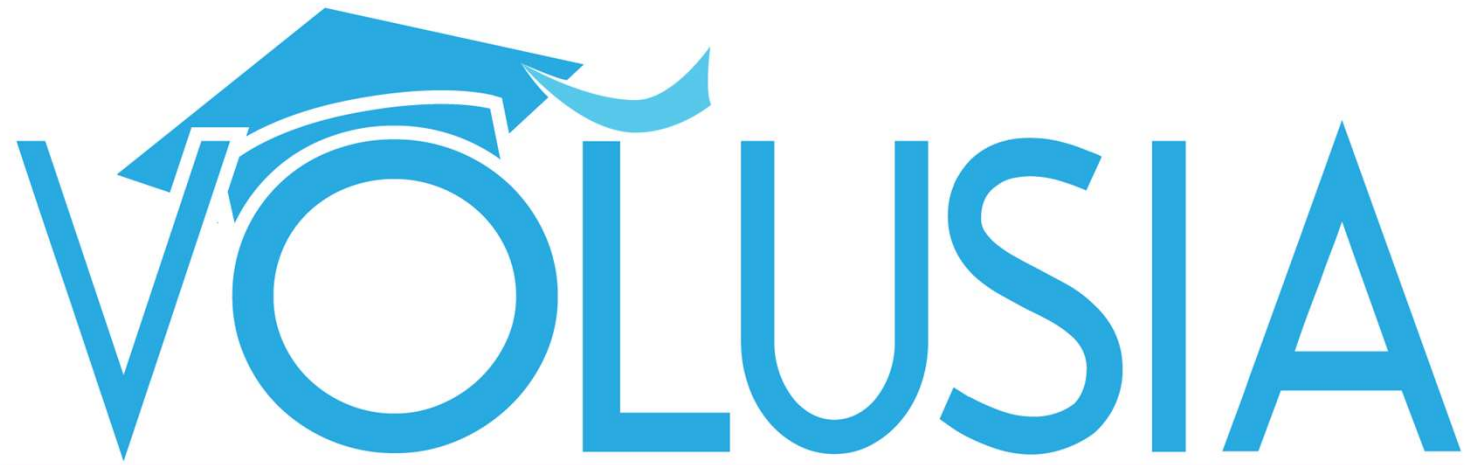


**WELCOME TO
GALAXY MIDDLE
24-25
TITLE I
PRESENTATION**





VOLUSIA

COUNTY SCHOOLS

EMPOWERING A CULTURE OF EXCELLENCE

24-25 GMS SIP FOCUS-MISSON-VISION

~EMPOWERING A CULTURE OF EXCELLENCE~

GMS SIP FOCUS

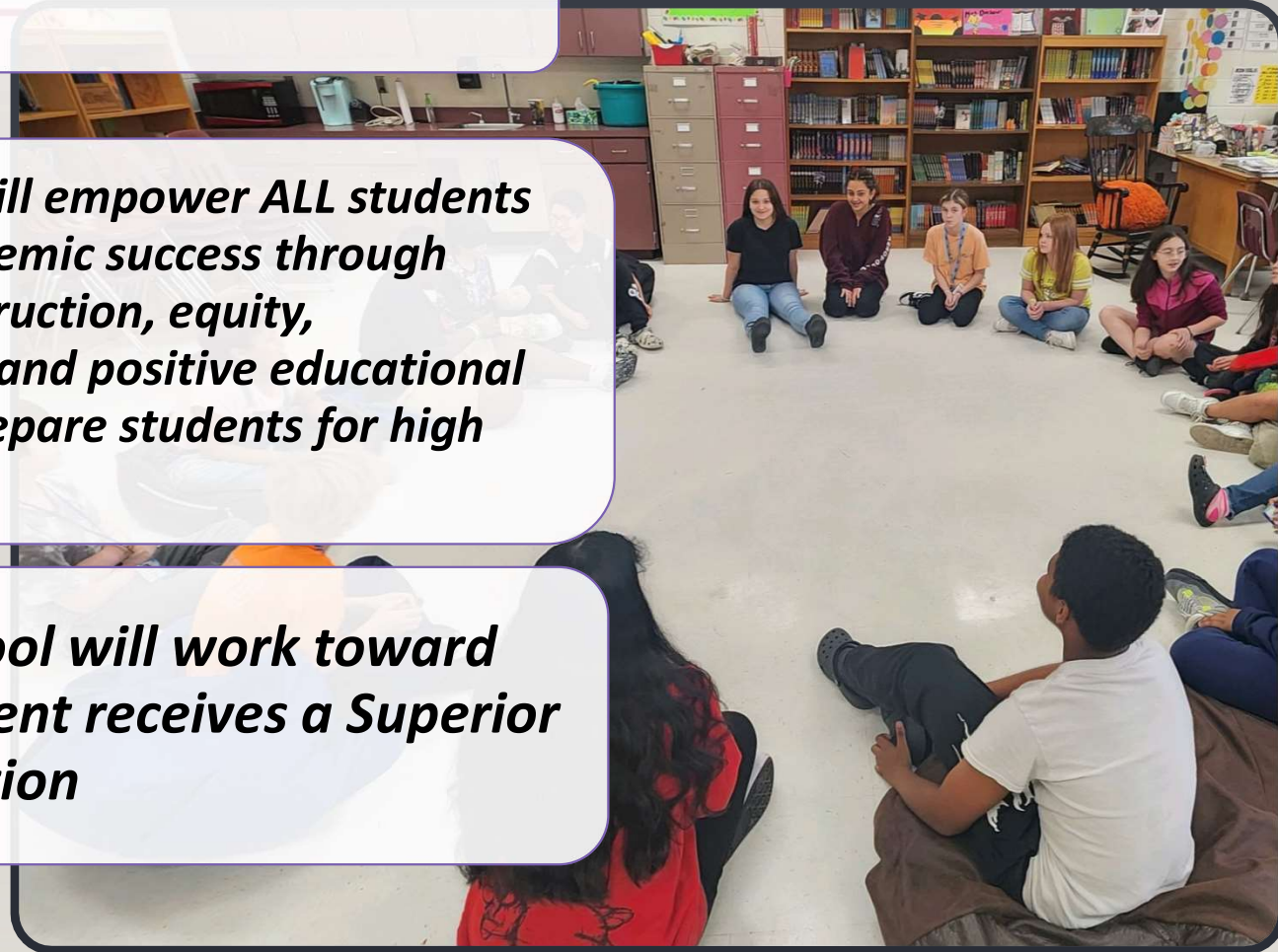
- **Benchmark Aligned Instructional Collaborative/Planning Practices**
- **Positive School Culture**

Mission

- **Galaxy Middle school will empower ALL students towards achieving academic success through benchmark-aligned instruction, equity, collaborative practices, and positive educational experiences that will prepare students for high school and beyond**

Vision

- **Galaxy Middle school will work toward ensuring each student receives a Superior 21st Century Education**



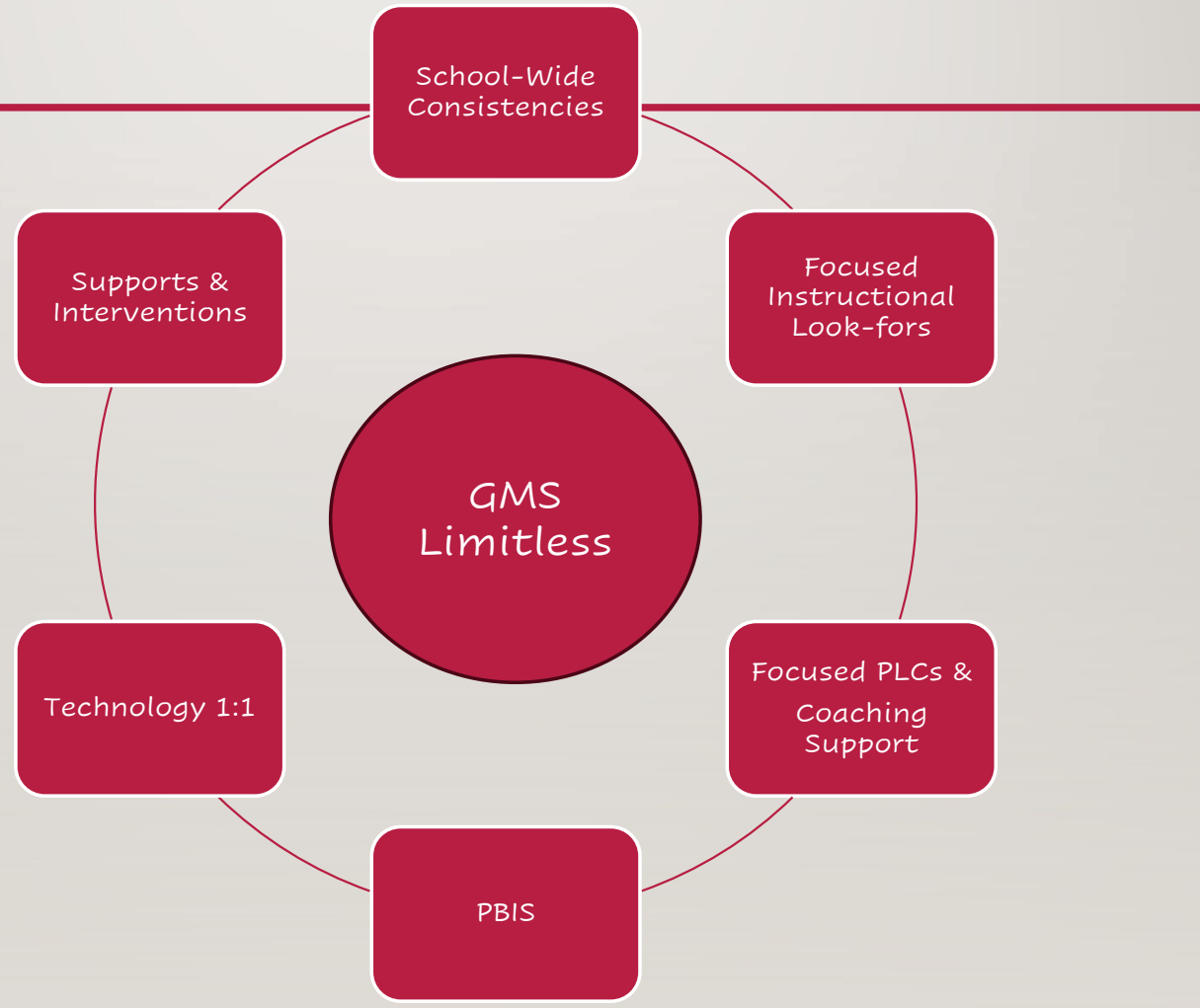
CELEBRATE GALAXY MIDDLE SCHOOL DATA RESULTS...

	ELA Ach	ELA LG	ELA LQ	Math Ach	Math LG	Math LQ	Sci Ach	SS Ach	Accel	Points	Grade
21 - 22	39	40	33	33	39	40	51	59	54	43	C
22 - 23	37	-	-	37	-	-	40	61	48	45	C
23 - 24	40↑	45↑	43↑	47↑	57↑	54↑	42↑	64↑	61↑	50↑	C

GMS INCREASED ALL NINE COMPONENTS 7 POINTS AWAY FROM B



GMS SIP INITIATIVES~ REFINING OUR PRACTICE FOR EXCELLENCE





ALL DAY, EVERY DAY Attendance Matters

A day missed here or there might seem insignificant, but every absence adds up and impacts learning. Each school day is a vital piece of your child's educational journey!

When a student misses just **2** days a month, it may not seem like much, but...

It adds up to **20 days** of lost learning.

Your child misses **30 hours** of crucial math instruction over the school year.

They lose **60 hours** of essential reading and writing practice.

By graduation, this pattern results in over a **1 year** of missed education.

When a student misses just **4** days a month, the impact is staggering...

By year's end, they've lost **40 days** of learning

That's **60 hours** of critical math instruction gone.

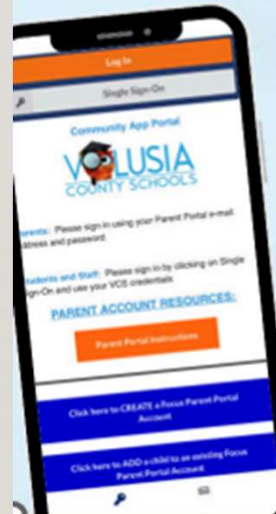
It means **120 hours** of vital reading and writing practice vanish.

Before they graduate, they've missed over **2 years** of school.



IMPORTANT BACK TO SCHOOL INFORMATION Be Informed- Stay Informed

CREATE YOUR PARENT PORTAL
ACCOUNT TODAY!



District Communication

- Crisis Communication
- District & School -Wide Communication
- Teacher Communication

View and Monitor

- Assessments
- Attendance
- Grades
- Report Cards

Digital Forms

- Update Contact Form
- Enroll Students
- Register for Classes
- Apply to programs

Pay for

- Student Device Insurance
- Activities/Events
- Field Trips

LEARN MORE

VISIT: VCSEDU.ORG/PORTALS



GMS SCHOOL WIDE EXPECTATIONS

GMS ROCKET EXPECTATIONS

PRIDE

BELIEVE IN YOURSELF
DO YOUR BEST
EMBRACE CHALLENGE & LEARN FROM MISTAKES
KEEP OUR CAMPUS CLEAN
SET & ACHIEVE GOALS
STAY ON TRACK & AIM TO IMPROVE

RESPECT

BE AN ACTIVE LISTENER
BE KIND
CELEBRATE DIFFERENCES
THINK BEFORE YOU SPEAK
USE APPROPRIATE LANGUAGE & VOLUME

RESPONSIBILITY

BE A TEAM PLAYER
BE PREPARED & ON TIME
HELP OTHERS
TAKE PRIDE IN YOUR WORK

SAFETY

BE AWARE OF YOUR SURROUNDINGS
FOLLOW ALL RULES
IF YOU SEE SOMETHING, SAY SOMETHING
WALK TO THE RIGHT



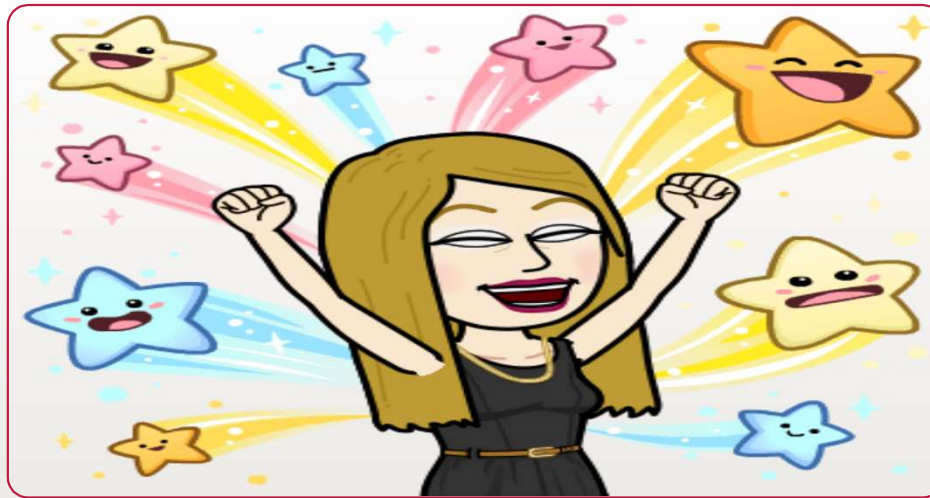
GMS School-wide Expectations

- All students must wear a student ID badge. \$5.00 charge for each replacement.
- Pursuant to House Bill 309/State Statue, Cell phones must be off/silenced and put away in a backpack or purse. We ask all student to put cellphones away upon entering our school campus.
- Appropriate clothes must be worn to school. No Hats, Midriffs showing, body suits, Slides, Slippers, or Open-toed shoes allowed.

**Violating any of these policies is a violation of the student code of conduct and is subject to disciplinary action.



A PARENT'S GUIDE TO TITLE I



2024-2025





THE PURPOSE OF TITLE I

to ensure that
all children
have a fair,

equal, and
significant
opportunity

to obtain a
high-quality
education



TITLE I SECTIONS

Title I,
Part A

Improving Academic Achievement

Title I,
Part C

Migrant Education Program

Title I,
Part D

Neglected and Delinquent



TITLE I, PART A

Improving Academic Achievement

What?

Additional funding for academic support

How?

Services and resources may include:

- academic coaches
- intervention teachers
- tutoring
- family education
- technology
- staff training

Parent and Family Engagement

What?

meaningful communication between families and school staff

How?

- Develop a Parent and Family Engagement Plan (PFEP)
- Involve parent in the development of School Improvement Plan (SIP) and PFEP
- Use Title I funds to support parent and family engagement activities



YOU HAVE THE RIGHT TO:



receive progress reports



have regular conferences



know the qualifications of your child's teacher



receive information in a language you understand



have flexible meeting times



MIGRANT EDUCATION PROGRAM

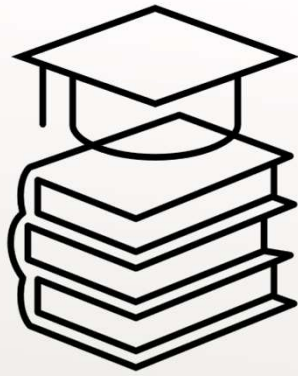
* funds additional education programs for migrant children (ages 3-21)

* helps migrant students meet academic challenges due to frequent moves and educational disruption

* coordinates educational and support services for migrant children and their families

MIGRANT EDUCATION PROGRAM





TITLE I, PART D

NEGLECTED AND DELINQUENT PROGRAM

Neglected and Delinquent Program

facilitates the enrollment, attendance, case management, and academic achievement of at-risk, adjudicated and neglected youth

provides transition services and support to incarcerated youth and youth completing a mandated department of Juvenile justice program, upon their return to school

provides transition services and support to at-risk youth as they transition back to their zoned school or an alternative setting from a drop-out prevention program



COMMUNITY ELIGIBILITY PROVISION

- has replaced Free and Reduced Lunch
- provision that allows non-pricing meal service to **ALL** students at no charge for lunch and breakfast meals
- forms do not need to be filled out to receive





**If you have any questions or concerns,
please don't hesitate to contact us.**

**Federal Programs & Grants
Development Services
2400 Eustace Ave
Deltona, FL 32725
386-734-7190 ext. 44740**



THANK YOU FOR ATTENDING 24-25 OPEN HOUSE

Thank you for your continued
Support!
Please make sure to complete the
following survey!

Galaxy Middle School Open
House/Title 1 Meeting Survey
9/5/2024



GMS Administrative Team

Principal ~ Dr. Velez

6th grade Administrator

Mrs. Stemberger LaRussa

7th Grade Administrator

Mr. Goodin

8th grade Administrator

Dr. Amaro Chatman

Dean of Students 6-8 Grade

Mrs. Dunbar Stanton