

5th Grade Georgia Milestones Practice Packet

ELA

Items 1 through 8

Use this passage to answer example items 1 through 8.

Buddy's Trick

"Look, Buddy is napping on our couch again," Angela said with a note of wonder to her brother, Carlos.

Their neighbors, the Thortons, had a black cat named Buddy. Lately, Buddy kept appearing in the children's house, but they did not know how he managed his mysterious trick.

Gently, Angela scooped up Buddy, and the sociable cat snuggled into her arms like a cozy stuffed animal.

"Buddy's tail has streaks of blue paint on it," Angela noticed. "Dad is painting our house that color. Maybe Dad left a window open and Buddy climbed inside."

"Let's go and check," suggested Carlos. In a flash, he sprinted out of the house, eager to find an answer, but Angela followed slowly. What if we solve the mystery and end Buddy's visits? I enjoy discovering him, Angela thought.

As Angela joined Carlos, he pointed to a ladder leaning against the house. The painted blue window above it was open. "Buddy must have climbed up the ladder and leaped through the window!" Carlos exclaimed.

"He's not an ordinary cat; he's an acrobat!"

Angela thoughtfully stared at the ladder's slippery metal rungs. "Buddy's claws cannot grip those rungs," she concluded.

A moment later, Dad's head poked through the open window and ended their discussion. "I've been painting this room all morning," he explained, "and no cat has crept by me."

"Maybe there's another open window," Carlos declared. Before Angela could reply, he bolted off again like a runner at the sound of the starting pistol. When Angela caught up with him, he was resting on the front steps, his face sweaty.

"The other windows are closed," Carlos reported, "but I can still solve this mystery."

"How?" asked Angela, curious about her brother's next plan. Carlos always had imaginative ideas.

“Buddy really likes you,” Carlos stated, staring at the contented cat in Angela’s arms. “If you go inside and call him, Buddy will want to come and see you. I’ll follow him and discover his secret entrance.”

“That’s a good idea,” Angela admitted. Reluctantly, she gently placed the cat in the grass and walked inside. Taking a deep breath, she began calling Buddy’s name. Suddenly a black shadow streaked out of their basement and leaped into Angela’s arms. A moment later, a delighted Carlos exploded through the front door and joined them.

“Buddy found a loose board by our basement window,” Carlos said. “He lifted it with his paw and wiggled under it.”

“That explains the blue paint,” Angela stated. “Dad stores his leftover paint in the basement. When Buddy slipped inside, he probably rubbed against a paint can.”

“I’m going to tell Dad about the loose board,” Carlos reported next, pleased at solving their mystery.

Angela sighed as the front door slammed behind Carlos. I guess the cat is out of the bag now, she thought. With heavy feet, Angela headed next door to take Buddy home.

Mr. Thorton was in his yard, frantically searching the bushes. When he spotted Angela and Buddy, he sighed with relief. “You’ve found my runaway cat!” Mr. Thorton cheered. “My wife’s out of town and Buddy misses her. Whenever I work in the garden, Buddy mysteriously disappears.”

“He comes to visit us,” Angela replied. “Unfortunately, he rubbed against a paint can.”

“I can give him a bath,” Mr. Thorton chuckled. “I hope he’s not bothering you.”

“I love Buddy’s company,” Angela assured him. Suddenly a hopeful smile lit up her face. “If my father agrees, I could watch Buddy until your wife returns.”

“That would be wonderful,” said Mr. Thorton. “Then I could stop worrying about him.”

“I’m glad we solved your mystery,” Angela laughed as Buddy purred.

Item 1

Which statement from the story supports the idea that Carlos is determined?

A "The other windows are closed," Carlos reported, "but I can still solve this mystery."

B "Buddy really likes you," Carlos stated, staring at the contented cat in Angela's arms.

C "Buddy found a loose board by our basement window," Carlos said. "He lifted it with his paw and wiggled under it."

D "I'm going to tell Dad about the loose board," Carlos reported next, pleased at solving their mystery.

Item 2

Which conclusion can BEST be made based on this sentence from the story?

With heavy feet, Angela headed next door to take Buddy home.

- A Angela is curious.
- B Angela is nervous.
- C Angela is stubborn.
- D Angela is responsible.

Item 3

What is the theme of the story?

- A Cats can be sneaky animals.
- B Cats are interesting animals.
- C People should leave windows closed.
- D People can get answers if they are persistent.

Item 4

Compare Carlos's actions to Angela's as they try to solve the mystery of Buddy the cat getting into their house. How do their actions differ? Use details from the story to support your answer.

Item 5

What does the phrase *lit up her face* mean in the sentence?

Suddenly a hopeful smile lit up her face.

- A made her face red
- B made her skin glow
- C made her look happy
- D made her feel sweaty

Item 6

What is the BEST meaning of the underlined phrase in the sentence?

I guess the cat is out of the bag now, she thought.

- A a pet is missed
- B a bag is emptied
- C a cat is discovered
- D a secret is uncovered

Item 7

What is the meaning of the word *frantically* in the sentence?

Mr. Thorton was in his yard, frantically searching the bushes.

- A** full of energy
- B** state of concern
- C** to make excited
- D** in a desperate way

Item 8

Rewrite this part of the story using more descriptive details. Think about how Angela and Carlos felt, as well as what they saw, smelled, and heard.

“The other windows are closed,” Carlos reported, “but I can still solve this mystery.”

“How?” asked Angela, curious about her brother’s next plan. Carlos always had imaginative ideas.

“Buddy really likes you,” Carlos stated, staring at the contented cat in Angela’s arms. “If you go inside and call him, Buddy will want to come and see you. I’ll follow him and discover his secret entrance.”

"That's a good idea," Angela admitted. Reluctantly, she gently placed the cat in the grass and walked inside.

Taking a deep breath, she began calling Buddy's name.

This image shows a single page of white paper with horizontal blue or grey ruling lines. The lines are evenly spaced and run across the width of the page, leaving small margins at the top and bottom. There are no vertical margin lines, text, or other markings on the page.

Math

Which statement about a unit cube is true?

- A** It is a cube with a base perimeter of 1 unit.
- B** It is a cube with a side length of 1 square unit.
- C** It can be used to measure the area of a rectangle.
- D** It can be used to measure the volume of a rectangular prism.

Look at the table.

$1.973 \times 10^1 = 19.73$
$1.973 \times 10^2 = 197.3$
$1.973 \times 10^3 = 1,973.0$
$1.973 \times 10^4 = 19,730.0$

Based on the pattern, what must 1.973 be multiplied by to get 19,730,000.0?

- A** 105
- B** 106
- C** 107
- D** 108

At Wildlife Junction Petting Zoo, $\frac{3}{7}$ of the zoo is used for animal and bird exhibits, $\frac{1}{4}$ of the zoo is used for the children's play area, and the remaining space is used for the ticket counter and the food court.

Does it make sense to say that that $\frac{3}{7}$ of the zoo is used for the animal and bird exhibits and the children's play area combined?

- A** It makes sense because $\frac{3}{7}$ is greater than $\frac{1}{4}$.
- B** It does not make sense because $\frac{3}{7}$ is less than $\frac{2}{3}$.
- C** It does not make sense because $\frac{2}{3}$ is close to 1 and $\frac{1}{4}$ is close to $\frac{1}{2}$ so the sum should be close to $1\frac{1}{2}$
- D** It makes sense because $\frac{2}{3}$ is close to $\frac{1}{2}$ and $\frac{1}{4}$ is close to $\frac{1}{2}$ so the sum should be close to $\frac{1}{2}$

Item 1

Look at the combined input-output table.

<u>Input</u>	<u>Output a</u>	<u>Output b</u>
1	<u>2</u>	<u>4</u>
2	<u>4</u>	<u>8</u>
3	<u>6</u>	<u>12</u>
4	<u>8</u>	<u>16</u>

Which set of rules was used to create this combined input-output table?

A Output A = Input + 1; Output B = (Input + 1) + 2

B Output A = Input + 1; Output B = (Input + 2) x 2

C Output A = Input x 2; Output B = (Input x 2) + 2

D Output A = Input x 2; Output B = (Input x 2) x 2

Item 2

Look at the inequality.

$$4.506 < \square$$

Which number belongs in the box to make this inequality true?

A 4.5

B 4.6

C 4.05

D 4.46

Item 3

Sasha measured 0.2467 decimeter of rain in one month. She correctly rounded that number to the nearest hundredth.

Which number is her answer?

A 0.24

B 0.246

C 0.247

D 0.25

Item 4

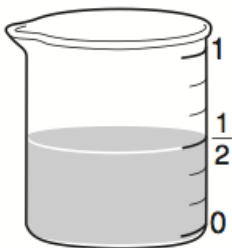
At a farm, $\frac{1}{5}$ of the total area is covered by a pumpkin patch and $\frac{4}{20}$ of the total area is covered by a cornfield.

What fraction of the total area of the farm is covered by the pumpkin patch and the cornfield combined?

- A $\frac{4}{20}$
- B $\frac{7}{25}$
- C $\frac{7}{20}$
- D $\frac{16}{20}$

Item 5

The picture shows the amount, in liters, of a sugar solution that Adam prepared.



He poured equal amounts of the solution into 3 beakers as shown.



Which expression is equal to the amount, in liters, of sugar solution in each beaker?

- A $3 \div \frac{1}{6}$
- B $\frac{1}{2} \div 3$
- C $3 \times \frac{1}{2}$
- D $\frac{1}{6} \times 3$

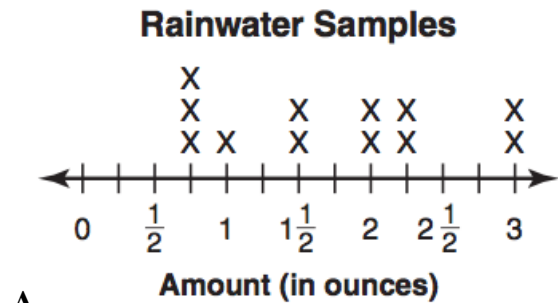
Item 6

Students at a school collected samples of rainwater at different locations outside the school. The table shows the amounts, in ounces, of the different samples collected.

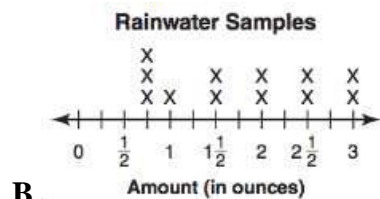
Rainwater Samples

Amount (in ounces)	3	$2\frac{1}{4}$	$1\frac{1}{2}$	$\frac{3}{4}$	2	$1\frac{1}{2}$	3	2	$2\frac{1}{4}$	$\frac{3}{4}$	$\frac{3}{4}$	1
-----------------------	---	----------------	----------------	---------------	---	----------------	---	---	----------------	---------------	---------------	---

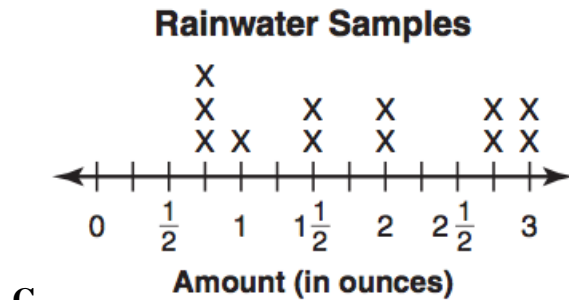
Which line plot represents the data in this table?



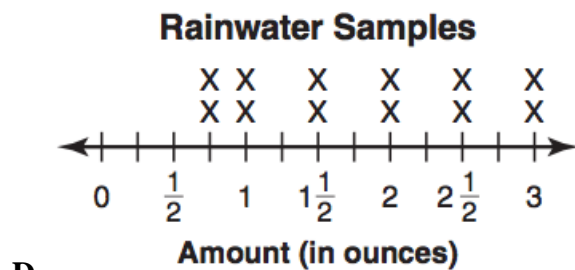
A



B



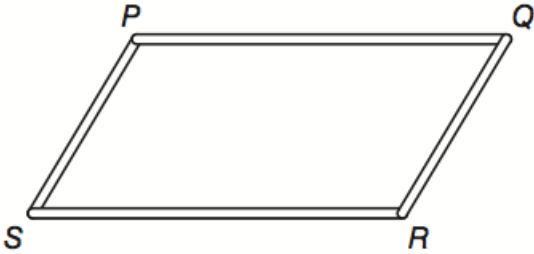
C



D

Item 8

Tony uses two short straws and two long straws to form the figure shown.



Replacing the straw from P to Q with a shorter straw, Tony creates a new figure. Which of these could be Tony's new figure?

- A square
- B rhombus
- C trapezoid
- D rectangle

Item 9

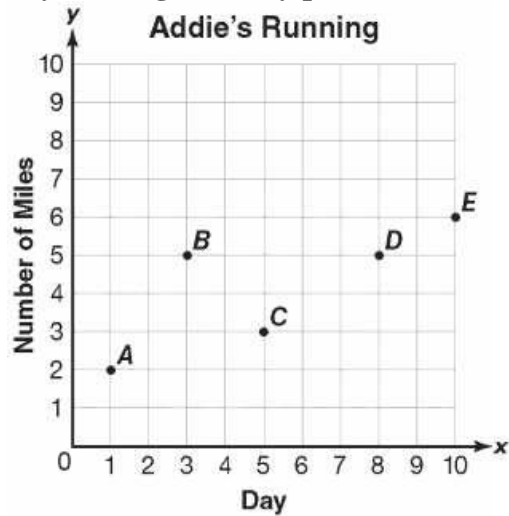
The hardware store is $\frac{5}{8}$ mile from Sara's house. She walks $\frac{1}{3}$ of the way from her house to the hardware store and then turns around and walks back home.

How many miles does Sara walk? Show your work and write your answer in the space provided.

_____ mile(s)

Item 10

Addie is beginning a running program. She tracks the number of miles she runs 5 different days during a 10-day period.



Part A: What are the coordinates for point A?

Part B: Which point represents day 5, when Addie ran 3 miles?

Part C: Describe the distance Addie ran from days 1 to 5.

Science

Which of these landforms is formed by deposition?

- A a mountain near a lake
- B a canyon between two cliffs
- C a delta near the mouth of a river
- D a pool at the bottom of a waterfall

Scientists can use instruments to predict the likelihood of a volcanic eruption.

Why would scientists MOST LIKELY want to predict the likelihood of a volcanic eruption?

- A to study weather changes
- B to warn people who live nearby
- C to protect nearby houses and buildings
- D to estimate the amount of lava that will flow

A scientist uses a microscope to compare tiny multi-celled and single-celled organisms.

Which statement about multi-celled and single-celled organisms is true?

- A Multi-celled organisms can reproduce, but single-celled organisms cannot.
- B Multi-celled organisms have cell membranes, but single-celled organisms do not.
- C Multi-celled organisms can move within their environment, but single-celled organisms cannot.
- D Multi-celled organisms have different cells for different jobs, but single-celled organisms do not.

A group of students is performing an experiment in science class. The students drop an antacid tablet into a glass of water. The antacid tablet begins to dissolve and bubbles start to form.

Which would MOST LIKELY explain why bubbles are formed?

- A The antacid tablet is chemically changing because gas is being released.
- B The antacid tablet is chemically changing because a solid is changing shape.
- C The antacid tablet is physically changing because the water becomes cloudy.
- D The antacid tablet is physically changing because the water is getting very warm.

A scientist is going to conduct research in the forest. She will bring a magnet as one of her research supplies.

Which magnet would be BEST for the scientist to bring on her trip to the forest and why?

- A a bar magnet because it has two different poles
- B an electromagnet because its strength is constant
- C a bar magnet because it does not need a power source
- D an electromagnet because it can attract more materials

Item 1

A student grouped his classmates based on certain characteristics. The table shows the characteristic used to describe each group.

Student Characteristics

Group	Characteristic
1	Tall height
2	Brown eyes
3	Ride bicycles
4	Like spaghetti

Which two groups are described by an inherited characteristic?

- A Group 1 and Group 2
- B Group 1 and Group 4
- C Group 2 and Group 3
- D Group 3 and Group 4

Item 2

Microorganisms were discovered after the microscope was invented in the 1600s. Since then scientists have found ways that microorganisms can be harmful.

Which of these describes one way that some microorganisms are harmful?

- A They are used to make certain types of food.
- B They are used to make certain fuels for energy.
- C They cause diseases that can be spread to others.
- D They break down waste matter in the environment.

Item 3

A student walks on a carpet while wearing a pair of rubber shoes. He touches a metal doorknob and feels a small shock.

Which of these BEST explains what causes the student to experience the shock?

- A the flow of energy due to gravity acting on the pair of shoes
- B the flow of charges due friction between the carpet and the pair of shoes
- C the flow of charges due to friction between the student's fingers and the doorknob
- D the flow of heat due to a difference in temperature between the student's fingers and the doorknob

Item 4

A group of students investigated physical and chemical changes using paper. The students recorded their observations in a table.

Student	Folding	Burning	Cutting	Tearing
1	Physical	Chemical	Chemical	physical
2	Chemical	Physical	Chemical	Chemical
3	Physical	Physical	Physical	Chemical
4	Physical	Chemical	Physical	physical

Which student correctly recorded all the changes that took place?

- A Student 1
- B Student 2
- C Student 3
- D Student 4

Item 5

The table shows data collected by a scientist about two geologic processes.

Geologic Processes

Process	Rate of increase of crust thickness	Amount of heat produced
1	Fast	A lot
2	Slow	Very little

Which processes are MOST LIKELY described in the table?

- A Process 1 is a volcanic eruption, and Process 2 is deposition.
- B Process 1 is deposition, and Process 2 is a volcanic eruption.
- C Process 1 is a volcanic eruption, and Process 2 is an earthquake.
- D Process 1 is an earthquake, and Process 2 is a volcanic eruption.

Item 6

A student reads that electromagnets are used in devices such as car motors and toasters.

Which of these BEST describes why electromagnets are used in these devices instead of bar magnets?

- A Electromagnets are permanent magnets.
- B Electromagnets can be turned on and off.
- C Electromagnets last longer than bar magnets.
- D Electromagnets are usually smaller than bar magnets.

Item 7

A dam constructed on a river can store large amounts of water behind it.

Which of these describes another reason for building a dam?

- A Dams help prevent forest fires.
- B Dams help prevent floods near rivers.
- C Dams help prevent erosion along riverbanks.
- D Dams help prevent pollution from getting into rivers.

Item 8

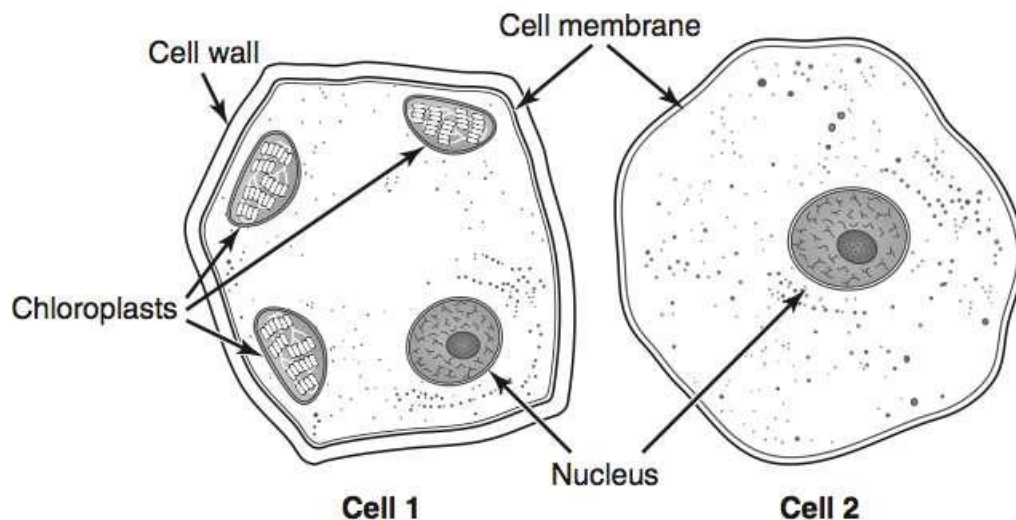
A student went to a river in the mountains and observed that some rocks were smooth and round, while others were rough and jagged. She noticed that the rocks were all made from the same type of mineral.

Which of these BEST explains the student's observations?

- A The rough, jagged rocks are from a volcanic eruption far away.
- B The rough, jagged rocks were blown into the water by wind erosion.
- C The smooth, round rocks are much newer than the rough, jagged rocks.
- D The smooth, round rocks have been weathered longer than the rough, jagged rocks.

Item 9

Four students examined the cells shown



Each student made an observation about one of the cells.

Student 1: Cell 1 is a plant cell because it has a cell wall.

Student 2: Cell 2 is an animal cell because it has a nucleus.

Student 3: Cell 1 is a plant cell because it has chloroplasts.

Student 4: Cell 2 is an animal cell because it has a cell membrane.

Which students are correct?

- A Student 1 and Student 2
- B Student 2 and Student 3
- C Student 1 and Student 3
- D Student 2 and Student 4

Social Studies

What was Babe Ruth known for in the 1920s?

- A being a World War I hero
- B being a popular jazz musician
- C being a famous baseball player
- D being an African American poet

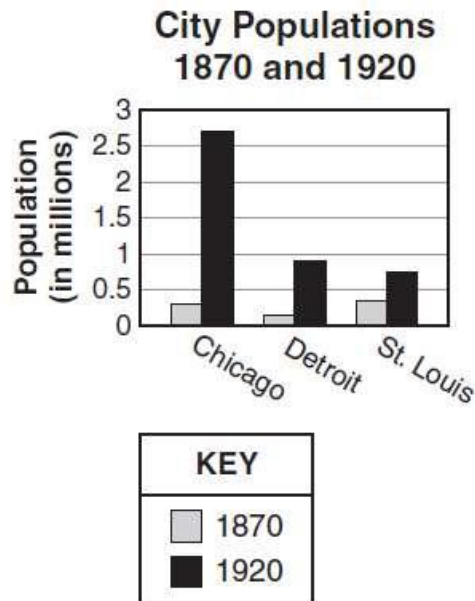
Which of these events caused the United States to join the fight against Germany in World War I?

- A the sinking of the *Lusitania*
- B the attack on the Eastern Front
- C the signing of the Treaty of Versailles
- D the assassination of Archduke Franz Ferdinand

Which action describes a responsibility of being a United States citizen?

- A running for elected office
- B expressing an opinion freely
- C serving as a member of a jury
- D attending weekly religious services

Look at the bar graph.



Which is a reason the population in these three cities changed between 1870 and 1920?

- A Free farmland was provided to settlers.
- B Many men went overseas to fight in wars.
- C New industries provided jobs for people.
- D Fewer immigrants moved to these areas.

Read the information in the box.

Examples of Items Rationed in the United States during World War II

Eggs—One per day allowed

Shoes—One pair per year allowed

Meat—Six ounces per day allowed

Cheese—Four ounces per day allowed

Gasoline—Four gallons per week allowed

Which of these describes an opportunity cost of the United States government's decision to ration items during World War II?

A There were fewer goods available for the public to buy.

B There was a shortage of supplies available to the military.

C It became less expensive for the public to buy most products.

D Companies that produced rationed goods went out of business

Item 1

Read the information in the box.

☐ automobile

☐ computers

☐ Internet

What was an effect of these technological advancements?

A The quality of goods decreased.

B There was an increase in business productivity.

C There was an increase in the cost of products.

D The number of people who could afford goods decreased.

Item 2

Which of these is guaranteed by the Bill of Rights?

A the right to vote

B the right to own land

C the right to travel between states

D the right to petition the government

Item 3

Which of these was an accomplishment of the Tennessee Valley Authority?

A It improved tourism by building hotels.

B It brought electricity to thousands of people.

C It taught workers how to organize unions.

D It provided a police force for large urban areas.

Item 4

Look at the map

Western States



Which body of water is shown by the arrow on the map?

- A** the Great Salt Lake
- B** the Gulf of Mexico
- C** the Mississippi River
- D** the Salton Sea

Item 5

Which of these was an effect of the Voting Rights Act?

- A** It changed the way senators are elected.
- B** It lowered the age at which people can vote.
- C** It provided protections for people registering to vote.
- D** It changed the way the president and vice president are elected.

Item 6

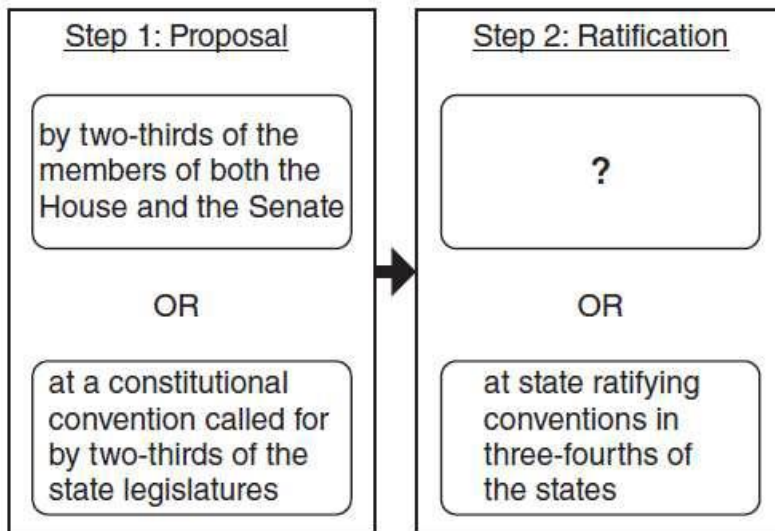
In 1946, Winston Churchill used the term “Iron Curtain” when describing conditions in Europe. What did he mean by this term?

- A** European nations needed to build more factories.
- B** Peace had finally spread throughout the countries of Europe.
- C** The militaries of Western Europe were becoming too powerful.
- D** There was a division between communist Eastern Europe and Western Europe.

Item 7

Look at the chart.

Process for Amending the Constitution



Which of these completes the empty box in the chart?

- A by the president
- B by the Supreme Court
- C by three-fourths of the state legislatures
- D by three-fourths of the members of both the House and the Senate

Item 8

Read the information in the box.

- ☐ signed at the end of World War I
- ☐ required Germany to pay Allies for damages caused by the war
- ☐ required Germany to reduce the size of its military

Which of these is described in the box?

- A the New Deal
- B the United Nations
- C the Treaty of Versailles
- D the North Atlantic Treaty Organization

Item 9

Read the information in the box.

*"Give me your tired, your poor,
Your huddled masses yearning to breathe free,
The wretched refuse of your teeming shore.
Send these, the homeless, tempest-tost to me,
I lift my lamp beside the golden door!"*
—Excerpt from a poem at the base of the Statue of Liberty
Written by Emma Lazarus, 1883

Based on the excerpt, what did America MOST LIKELY represent to most immigrants during the early 1900s?

- A** a chance to become famous
- B** a way to have personal freedom
- C** a means to receive better housing
- D** an opportunity for government leadership

Item 10

Which of these BEST describes the function of private business?

- A** to maintain the security of citizens
- B** to provide services through taxation
- C** to produce goods and services for the public
- D** to provide savings and investment opportunities to the public