

LODL "THE WAVE"

Newsletter- September 13



Welcome back!



MORNING ARRIVAL

1. School starts at 9:20a.m..
2. Doors open at 9:05a.m.
3. Please make sure to have your child at school before the time.
4. Late arrivals have to sign in at the office.

SCHOOL DISMISSAL

- **School is dismissed at 3:50 pm**
- **Please let me know your child's daily school transportation to ensure her or his safety.**
- **If there is any change in your child's transportation schedule, please let the office know.**
- **Thank you.**

SAVE THE DATES:

- ☑ **September 20th- LODL Picture Day!**
- ☑ **September 11th 4:30-7:00 p.m.**
***Back To School/Hispanic Heritage Month/Bookfair**
- ☑ **Wednesday, October 2nd- 2 hour Early Release**
- ☑ **Picture Re take Day October 22**

IMPORTANT NUMBERS



Office: 952-226-0300
Attendance Line: 952-226-0301



plsas.org



@LAOLADELLAGOpals

[LODL district calendar-click here](#)



WAVES WINNERS THIS WEEK

LODL WAVES WINNERS

Worker, Accountable, Value Everyone and Safe



PL

News From our Principal

Dear Families of LODL:

We have successfully navigated our first full week of school! Students are in the routines, schedules are familiar, and by now all classes have had each specialist teacher at least once. We are off to a good start!

One major change to the school day we made this year was implementing a new recess and lunch schedule. For several years, students would go outside for recess first, and then come in for lunch. For a variety of reasons, we decided to have lunch first, and then recess for all students grades K-5. I'm pleased to share with it has been a huge success! Some of the benefits are:

- Students are able to calmly enter the cafeteria, not all coming in at once from the playground (students are not coming in from recess "hangry")
- Staff can better ensure that students are properly washing hands
- The flow in the lunch line is running much more effectively
- Students are dismissed to recess table by table once everything is put away and cleaned (this is motivation to get to recess!)
- As students are released to recess, it's a big staggered which means it's not all trying to be first out the doors
- Classroom teachers meet students at the playground, and are able to directly address any playground issues that may arise, teachers are also able to keep students outside for a bit longer, go for a walk, or visit one of our outdoor classroom spaces

Thus far we have only gleaned positive feedback! I know this may seem like a minor detail, but it is a huge change for our school. Please continue to practice those PIN numbers!

Finally, you will continue to hear from the school and our district about the upcoming Operating levy referendum scheduled for November 5. As part of the November 5, 2024 ballot, Prior Lake-Savage Area Schools will ask voters to revoke the district's existing operating levy of \$623.97 per student and replace it with a new levy of \$1,803 per student. The new levy would be in place for 10 years and would generate about \$10.8 million for the first year with an inflationary increase in the following years.

If approved, the additional funds would bolster the district's financial stability and support investments in programs aligned with our community-informed Strategic Plan. We propose the following to support each student's growth and success:

- Enhance academic excellence that increases student performance and outcomes
 - Increase staffing for behavior intervention and student support
 - Expand career pathway programs
- Strengthen safety and security at all schools

Look for more information on the operating levy referendum proposal on the district's website, www.plsas.org/referendum

If you have any questions, please do not hesitate to reach out to me at anytime. I can be reached directly at 952-226-0303 or rkucinski@plsas.org.



News from our Dean:

August Parent Information about Attendance Click Link Here:

[Message about BUS Safety-click here](#)

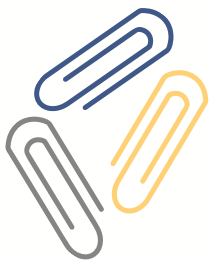
Dear Families,

As we continue to prioritize the safety and well-being of our students, we'd like to share some important reminders about maintaining a safe environment on the school bus.

Here's how we can work together to ensure bus safety:

1. **Follow Bus Rules:** Encourage your child to follow all bus rules, including staying seated, using inside voices, and keeping their hands and feet to themselves.
2. **Respect the Bus Driver:** Remind your child that the bus driver is there to ensure everyone's safety. Listening to and respecting the driver's instructions is crucial for maintaining order and preventing accidents.
3. **Avoid Distractions:** Please talk to your child about the importance of avoiding distractions such as loud noises or distracting behavior that might affect the driver's focus or other passengers' comfort.
4. **Stay Seated:** Students should remain seated while the bus is moving. Standing or moving around while the bus is in motion can lead to accidents and injuries.
5. **No Eating or Drinking:** For hygiene and safety reasons, eating and drinking on the bus are discouraged. This helps maintain a clean environment and prevents accidents.

Respect Fellow Passengers: Encourage your child to treat their fellow passengers with kindness and respect. A positive and considerate attitude contributes to a safer and more pleasant ride for everyone.



Sam Schenkelberg, Dean
sschenkelberg@plsas.org



[Digital Equity Survey- Click Here](#)

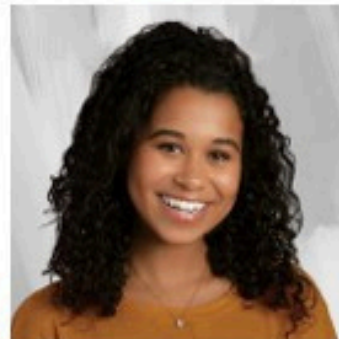
LODL Picture Day- Friday, Sept 20

Lifetouch.

Picture Day is Coming!

¡Ya llega el Día de la Foto!

Friday, September 20, 2024
La ola del lago-Grainwood



How it works:



Pre-order today on
mylifetouch.com
using your Student ID or
Picture Day ID:
EVTNQV66R



Students are
photographed on
Picture Day

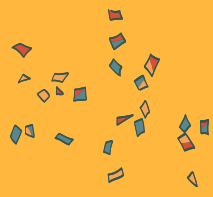


Orders will be sent home
with your student after
Picture Day

*Cómo funciona: Encarga de manera anticipada en mylifetouch.com usando tu ID de estudiante o la ID del Día de la Foto.
Los estudiantes son fotografiados el Día de la Foto. Los pedidos serán enviados a tu casa con tu estudiante después del Día de la Foto.*

Parents can contact our Customer Success team with questions pertaining to Packages/Payments: 1-800-736-4753

Questions? Contact our Help Center at lifetouch.com/support-us. Select K-12 School Photography for assistance.
¿Preguntas? Comunícate con nuestro Centro de Ayuda en lifetouch.com/support-us. Selecciona Fotografía Escolar K-12 para recibir asistencia.



WAVES

La ola del lago School-Wide Behavioral Expectations

	CLASSROOM 3	LUNCHROOM 2	HALLWAY 2	PLAYGROUND 4	RESTROOM 1	BUS 3
W ORKER	<ul style="list-style-type: none"> I try my best. I raise my hand. I complete assignments. 	<ul style="list-style-type: none"> I eat my lunch. I clean up after myself. I recycle food and waste correctly. 	<ul style="list-style-type: none"> I keep my locker area clean. I only touch my belongings. 	<ul style="list-style-type: none"> I solve problems peacefully. I am a good sport. I find and report to an adult if I need help. 	<ul style="list-style-type: none"> I return to class quickly. 	<ul style="list-style-type: none"> I solve problems peacefully.
A CCOUNTABLE	<ul style="list-style-type: none"> I help others. I come prepared to class. I clean up after myself. I follow directions. 	<ul style="list-style-type: none"> I keep my body to myself. I raise my hand. I follow directions. 	<ul style="list-style-type: none"> I go directly to where I need to be. I follow directions. 	<ul style="list-style-type: none"> I put equipment away. I follow the rules of the game. 	<ul style="list-style-type: none"> I flush the toilet. I wash my hands. I follow directions. 	<ul style="list-style-type: none"> I pick up after myself. I remember my belongings. I follow directions.
V ALUE	<ul style="list-style-type: none"> I listen to the speaker. I use kind words. I use materials appropriately. I wait for my turn to talk. 	<ul style="list-style-type: none"> I include everyone. I use good manners. 	<ul style="list-style-type: none"> I use quiet feet. 	<ul style="list-style-type: none"> I am kind to others. I include others in my play. I take turns. 	<ul style="list-style-type: none"> I respect others' privacy. I respect property. I use only the necessary amount of toilet paper and 2 paper towels. 	<ul style="list-style-type: none"> I use kind words. I listen to my bus driver.
E VERYONE						
S AFE	<ul style="list-style-type: none"> I keep my body to myself. I walk in the classroom. 	<ul style="list-style-type: none"> I stay in my seat. I walk in the lunchroom. 	<ul style="list-style-type: none"> I walk in a line. I share the hallway. I keep my body to myself. 	<ul style="list-style-type: none"> I keep my body to myself. I am aware of my surroundings. 	<ul style="list-style-type: none"> I keep my body to myself. I keep the floors clean and dry. 	<ul style="list-style-type: none"> I keep my body to myself. I stay in my seat.



Waves Drawings will be on Friday's



LODL Homecoming Week Sept 30th-Oct. 4th



La ola del lago

.....
.....

Spirit Week

.....
.....

September 30th-October 4th



Monday

PAJAMA DAY

Sleep in a little longer for a Monday and wear your Pj's

Tuesday

wacky Tacky Tuesday

Colorful Socks, Mixed Matched Clothes and Crazy Hat

Wednesday



Neon Day


Wear Bright Neon Colors!

Thursday



Jersey Day

Wear your favorite Jersey or Team shirt



Friday

Blue and Gold Day

Wear your Laker Colors!

LODL PTC INFORMATION

PTC Parent directory



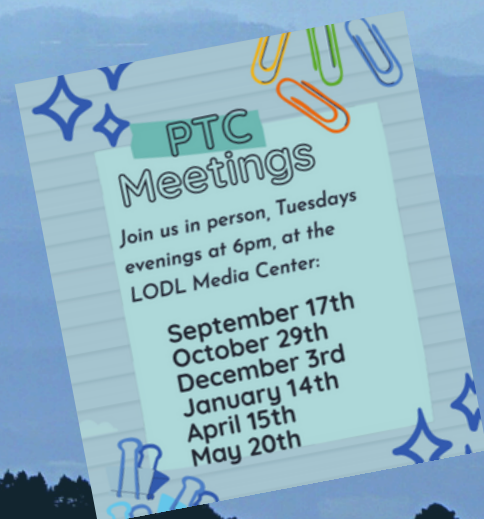
Reach out to LODL PTC with questions at
ptc@lodlptc.org

** Looking to directly support your student's classroom teacher? Consider being a room parent!
Click below link

Want to be a Room Parent : Click here

Join us at the first PTC Meeting of the school year, where we'll introduce this year's PTC Board, share details on initiatives for the upcoming year and ways to get involved. The meeting is **Tuesday, Sept 17** from 6:00-7:30 in the LODL Media Center. Interns will provide childcare for those interested.

[Click here to see the LODL District Calendar](#)



Order Spirit Wear

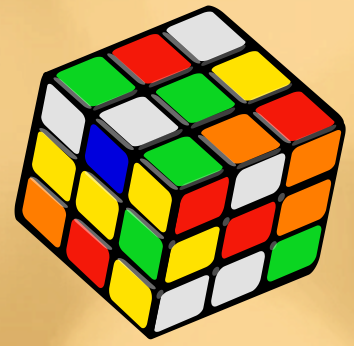
*Order
Now!*

LODL PTC is running a Spirit Wear Fundraiser now through Mon, Sept 16! Both student and adult options are available featuring super soft tri-blend tees and a new LODL Logo! Items will go home with your student on Friday, Sept 27th - in time for our Spirit week and Homecoming on Oct 4th! When ordering, please make sure to include your student's name and grade as it will greatly help getting items delivered on time. Every item purchased will raise \$5 towards our PTC fund - which supports our school intern program, events and more! Get your gear here: Link to [LODL Spirit Wear Fundraiser](#)



[Click here to order](#)





Dear La ola del lago Families:

RE: Message from the Office

I hope this message finds you well!

As we continue to create a safe and focused learning environment for our students, we kindly ask for your assistance with the following:

- To ensure that our classrooms and play areas remain organized and free from distractions, we ask that students leave personal toys, blankets, and stuffed animals. These items can sometimes cause disruptions or get misplaced, and keeping them at home will help maintain a smoother daily routine for all.**
- As part of our ongoing efforts to maintain a safe and organized environment during recess, we kindly request that students leave personal recess equipment at home. This includes items such as balls, frisbees, and other play equipment.**

By doing so, we can ensure that all students have equal access to the playground equipment provided by the school and reduce the potential for lost or misplaced items. Additionally, this helps us manage the playground area more effectively and ensures that everyone has a fair and enjoyable recess experience.

Thank you for your understanding and cooperation. If you have any questions or concerns, please don't hesitate to reach out.

**Warm regards,
LODL Office**

**• Be •
SAFE**



Operating levy referendum scheduled for November 5

As part of the November 5, 2024 ballot, Prior Lake-Savage Area Schools will ask voters to revoke the district's existing operating levy of \$623.97 per student and replace it with a new levy of \$1,803 per student. The new levy would be in place for 10 years and would generate about \$10.8 million for the first year with an inflationary increase in the following years.

If approved, the additional funds would bolster the district's financial stability and support investments in programs aligned with our community-informed Strategic Plan.

We propose the following to support each student's growth and success:

- **Enhance academic excellence that increases student performance and outcomes**
 - **Increase staffing for behavior intervention and student support**
 - **Expand career pathway programs**
 - **Strengthen safety and security at all schools**

Look for more information on the operating levy referendum proposal on the district's website, www.plsas.org/referendum

What's on the Nov. 5 ballot?

The district's goal is to sustain and enhance academic programs and services for our students. If the operating levy is approved, the additional funds would bolster the district's financial stability and enable investments in academic programs and services directly aligned with our new Strategic Plan, which was developed with community input. To support each student's growth and success, PLSAS proposes the following enhancements:



Community Education Classes- Click Link here to Sign up



**FALL
IN LOVE WITH ART**

**Tuesdays, 9/24 - 10/22
4:00 - 5:00pm**

Make fun and beautiful fall-themed art! Students will work with different materials such as paint, canvas, tissue paper, and much more. This class is taught in Spanish.

Taught by LODL teacher,
Sra. Mancía

Register at www.priorlakesavagece.com or 952-226-0310



**Give Hockey a
Shot!**

COME JOIN PLSHA AND GIVE HOCKEY A SHOT!
PLSHA OFFERS TWO FREE CLINICS TO INVITE KIDS TO TRY
THE SPORT OF HOCKEY (PRE-K THRU 5TH GRADE).

**NO EXPERIENCE NEEDED!
EQUIPMENT WILL BE PROVIDED!**
(EQUIPMENT PROVIDED WHILE SUPPLIES LAST)

Session #1
Saturday, September 7th 3:30pm-4:30pm

Session #2
Saturday, September 14th 11:30am-12:30pm

TO REGISTER YOUR CHILD, OR FOR MORE
INFORMATION PLEASE VISIT WWW.PLSHA.COM

DAKOTAH ICE CENTER 2100 TRAIL OF DREAMS PRIOR LAKE, MN 55372

THIS FLYER WAS PREPARED AND PAID FOR BY PLSHA



**PRIOR LAKE GIRLS
PRESENTS: HOCKEY**

**Saturday,
September 16th
11:30-1:00**

**LAKER GIRLS
BIG SKATE**

**Dakotah Ice Center
2100 Trail of Dreams
Prior Lake, MN 5372**

JOIN US IN HONORING THE MEMORY OF ANNA BIRD AT THIS
FREE EVENT TO PROMOTE GIRLS HOCKEY. NO EXPERIENCE IS
NECESSARY, AND EQUIPMENT WILL BE AVAILABLE FOR USE.

****REGISTRATION IS REQUIRED TO ATTEND THE EVENT****

www.plsha.com

 **Community**
Education

Fall 2024 | Learning For All Ages




Painting with Vanessa Merry
Pages 6-7


www.PriorLakeSavageCE.com | 952-226-0310

ADULT PROGRAMS | YOUTH PROGRAMS
KIDS' COMPANY | PRESCHOOL
EARLY CHILDHOOD FAMILY EDUCATION

   @PLSASCommEd



 **PRIOR LAKE
ROBOTICS**

 **FIRST
LEGO
LEAGUE**

EXPLORE


GRADES K - 3

STARTS THURSDAY SEPT 5

6:00PM @ PLHS COMMONS

REGULAR MEETINGS
TUESDAYS - OR - THURSDAYS

KINGTEC2169.
PAID FOR BY KING



 PRIOR LAKE CHAMBER
&
PRIOR LAKE-SAVAGE COMMUNITY EDUCATION

**FALL
COMMUNITY
FEST** **FREE ENTRY**

PRIOR LAKE HIGH SCHOOL
7575 150TH ST. W
SAVAGE, 55378

FOOD • LOCAL BUSINESSES • CHILDREN'S ACTIVITIES • LOCAL NON-PROFITS

  Community Education
Prior Lake-Savage Area Schools

September 16th Held From 6-8pm

for more information scan



 **Travel
SHOW**

Wed. Sept. 18
6-7 PM
La ola del lago
at Grainwood

Now is the ideal time to learn and dream about touring again. Bring your sense of adventure as we learn about the exciting destinations in this educational presentation. Join us and experience the world together again in 2025- there will be plenty of time for questions and discussion.

FREE - Preregistration required at www.priorlakesavagece.com or 952-226-0310

 (7 DAYS - AUG. 9, 2025) CAPE COD	 (8 DAYS - MAY 16, 2025) MACKINAC ISLAND & NIAGRA FALLS	 (6 DAYS - MAR. 16, 2025) GREAT TRAINS & GRAND CANYONS	 (9 DAYS - DEC. 3, 2025) SWITZERLAND & MARKETS OF THE RHINE
-----------------------------------------------------------------------------------------------------------------------------------	------------------------------------------------------------------------------------------------------------------------------------------------------------------	------------------------------------------------------------------------------------------------------------------------------------------------------------------	---------------------------------------------------------------------------------------------------------------------------------------------------------------------------



 [Link to Community Ed Flyers Click here](#)



Learn more:
www.plsas.org/referendum

Coming soon:
Laker Connections
Mailed mid August

On November 5 Prior Lake-Savage Area School district residents will be asked to vote on an operating levy referendum proposal that would bolster the district's financial stability, maintain what we have and allow us to invest in academics and safety, including:

- Enhancing academic excellence that increases student performance and outcomes
- Increasing staffing for behavior intervention and student support
- Expanding career pathway programs
- Strengthening safety and security at all schools

Reminders: Student use of Personal Electronic Devices

Dear LODL Families,

To enhance student learning and to support social-emotional health, a change has been made to PLSAS School Board Policy 525.1 Student Use of Personal Electronic Devices. .

At the elementary level, cell phones and other electronic devices, including smart watches and earbuds/air pods, should be turned off and put away throughout the school day. Ideally, electronic devices should be left at home.

This prohibition includes all areas of our schools such as hallways, lunchrooms, playgrounds and classrooms. Students will still have access to their school-issued iPad, which will provide the necessary tools for learning throughout the day.

Parents can contact their child during the day through the main office at their child's school.

Students who choose to bring electronic devices assume the risk of damage, theft, or loss.

IF a student does not meet these expectations, what happens?

First Offense:

Staff will have a conversation with the student about expectations and have them put their device away.

Second Offense:

Electronic device(s) will be kept by the teacher or turned into the school office for the remainder of the day.

The electronic device(s) are returned to the student at the end of the day. Principal or designee may contact the family about the incident.

Repeat Offenses:

Electronic device(s) will be turned into the school office for the remainder of the day.

Parents will be asked to pick up the electronic device(s) and/or may be asked to meet with the school Principal or designee.

Please review these expectations with your child prior to the start of school. If you have any further questions, please feel free to call 952-226-0303.

LODL Office