



SEPTEMBER 12, 2024

Facility Utilization Planning Study – Phase III



Walled Lake Consolidated Schools



Presentation Overview

1. Overview of Facility Utilization Committee Process
 - Background of 2023 Study and Goals and Objectives of Phase III
 - Review of Previous Findings at Middle School
 - Pupil Enrollment Process/Findings
 - Site / Floor Plan Overview
 - Academic and Programming Overview
2. Survey Format / Questions from the Facility Utilization Committee
 - What additional information is needed
 - Frequently Askes Questions (FAQ)
3. Next Steps/Considerations
 - Review of Key Dates/Activities



SECTION 1
Overview of Facility Utilization Committee Process



Background

Background of the 2023 Study

- Several long-term recommendations were provided for WLCSD consideration in 2018
 - The continuation of the 2018 Facility Utilization findings and recommendation were to continue to monitor enrollment and utilization on a year-by-year basis.
 - 2012 Enrollment: 15,590 students
 - 2024 Enrollment: 12,105 students
 - Decrease of 3,485 students over a 12-year period
- The purpose of the 2023 Facility Utilization Assessment was a continuation of identifying potential options to more effectively and efficiently utilize District resources while reducing District expenses post-Covid and considering current and projected trends.



Background

Background of the 2023 Study

- The Facility Utilization Committee, comprised of community members, administrators, teachers and staff, and parents whose task was to assist in identifying options for WLCSD Administration and Board of Education to consider to achieve its goals and objectives.
- WLCSD Board of Education adopted the recommendations for reducing the number of Middle Schools from (4) to (3), relocating ESC functions to the repurposed vacant Middle School, and new space for Adult Transitions Program (ATP).
- Included in the 2024 Bond Program are funds for renovating and reconfiguring improvements at the Middle School level.



Goals and Objectives

Facility Utilization Committee Phase III Goals and Objectives

- Determine of the (4) existing Middle Schools Facilities, which facility should be repurposed.
- Support for redistricting to align (12) elementary schools to (3) middle schools to (3) high schools
- Determine new space for ATP.

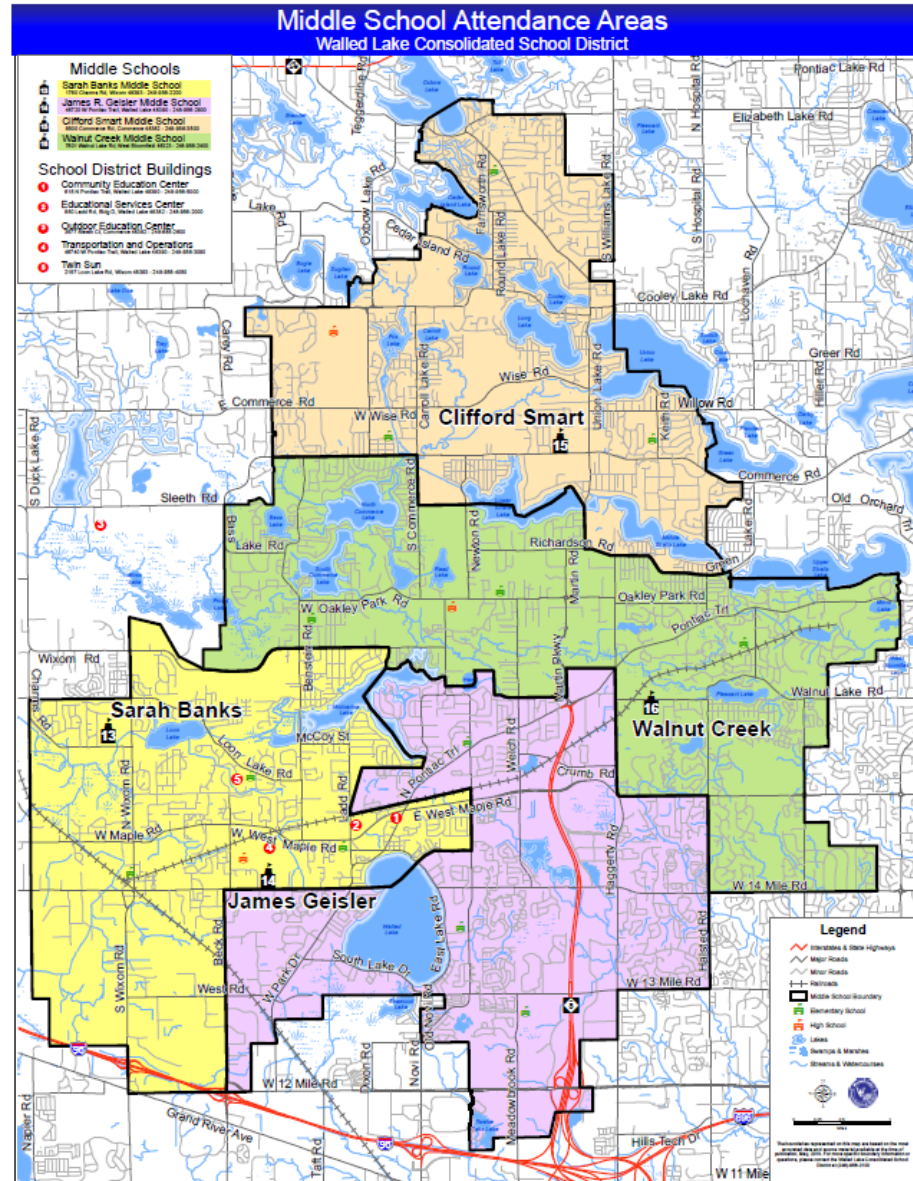


Existing Boundary Maps

Middle Schools



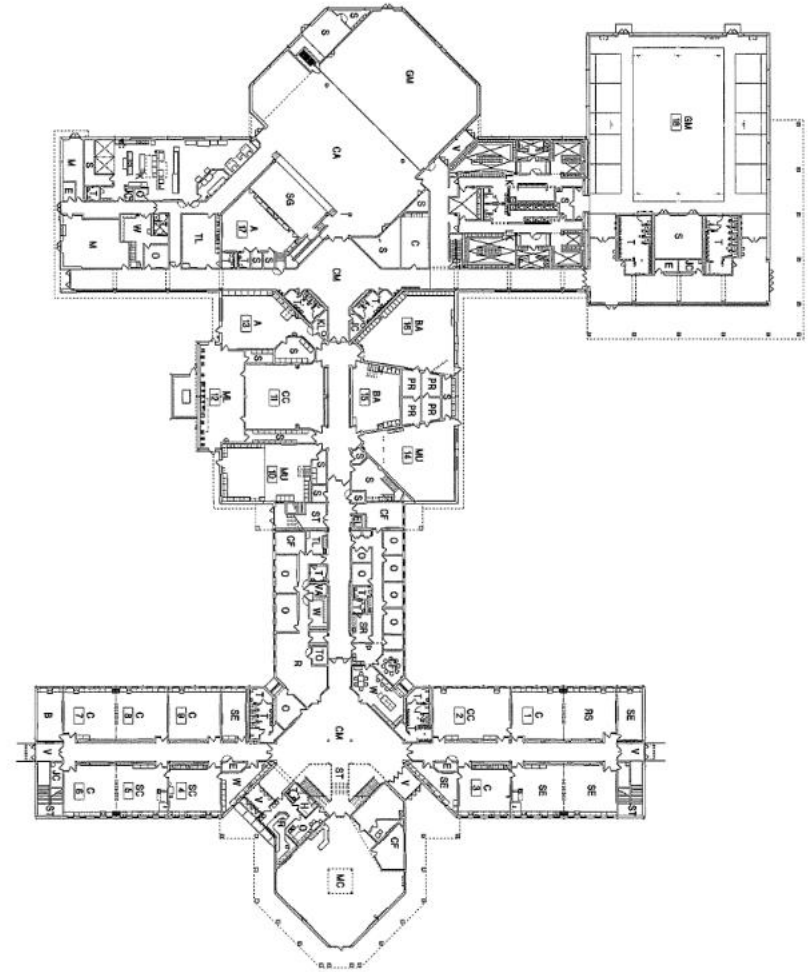
- Sarah Banks Middle School**
1755 Cherokee Rd., Wilson 46091 • 248-688-2300
- James R. Geisler Middle School**
48733 W. Pottsville Trail, Walled Lake 48090 • 248-688-2600
- Clifford Smart Middle School**
6502 Commerce Rd., Commerce 48382 • 248-688-2400
- Walnut Creek Middle School**
7921 Walnut Lake Rd., West Branchford 48321 • 248-688-2428





Existing Site Map – Sarah Banks MS

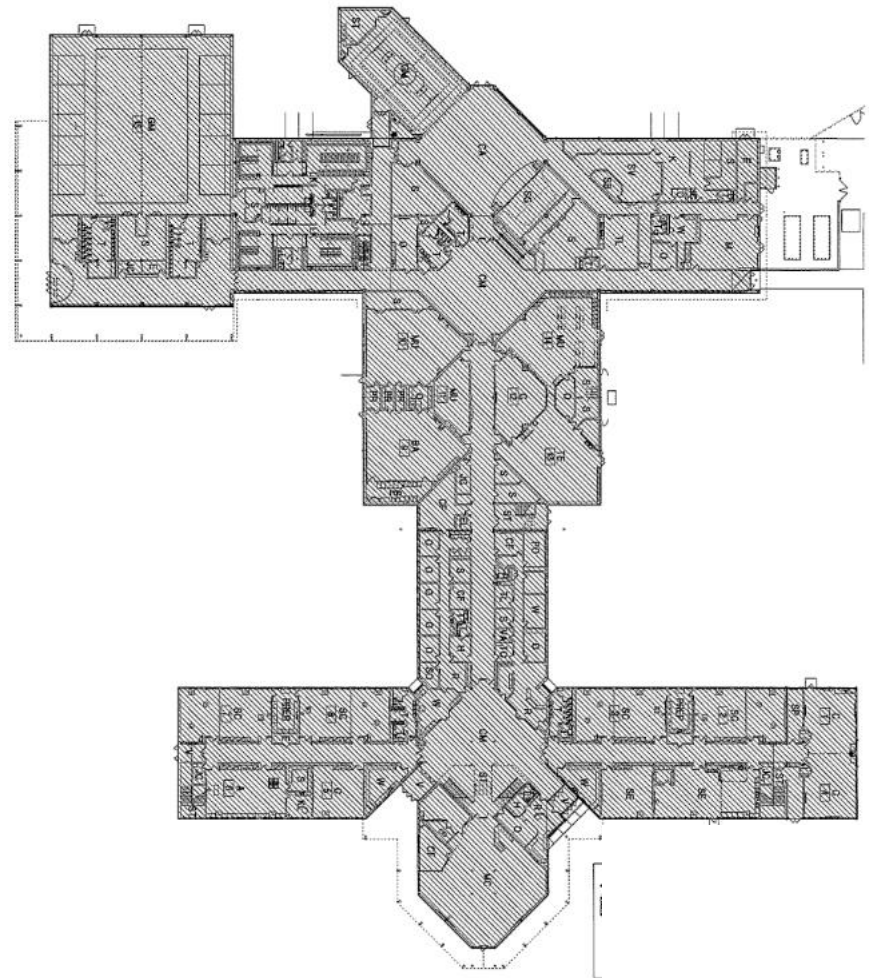
Sarah Banks Middle School
1760 Charms Road, Wixom
Built: 1998
Size: 144,370 s.f. (37 acres)





Existing Site Map – James R. Geisler MS

James R. Geisler Middle School
46720 West Pontiac Trail, Walled Lake
Built: 1992
Size: 149,913 s.f. (27 acres)

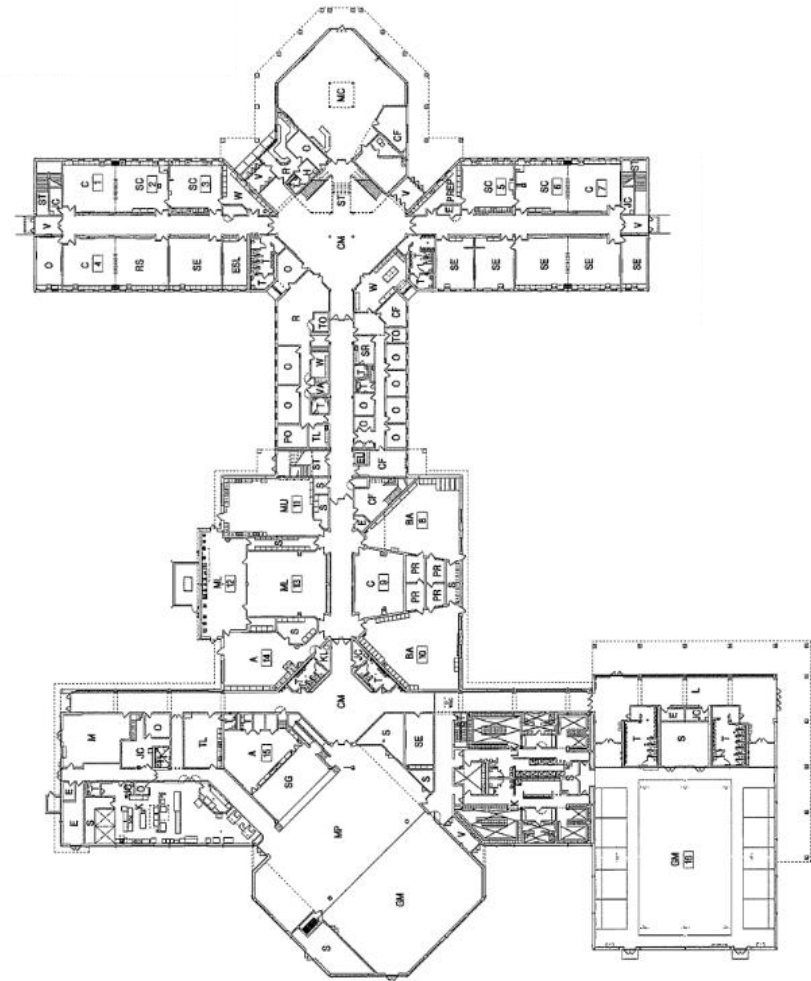


Banks Middle School	1760 Charms Road	Wixom	1998	2004 2013 2019	144,370
Geisler Middle School	46720 West Pontiac Trail	Walled Lake	1992	2001 2004 2013 2019	149,913
C.H. Smart Middle School	8500 Commerce Road	Commerce Twp	1958	1991 1997 2000 2001 2004 2013 2019	154,940
Walnut Creek Middle School	7601 Walnut Lake	West Bloomfield	1998	2004 2013 2019	144,370



Existing Site Map – Walnut Creek MS

Walnut Lake Middle School
7601 Walnut Lake, West Bloomfield
Built: 1998
Size: 144,370 s.f. (29acres)

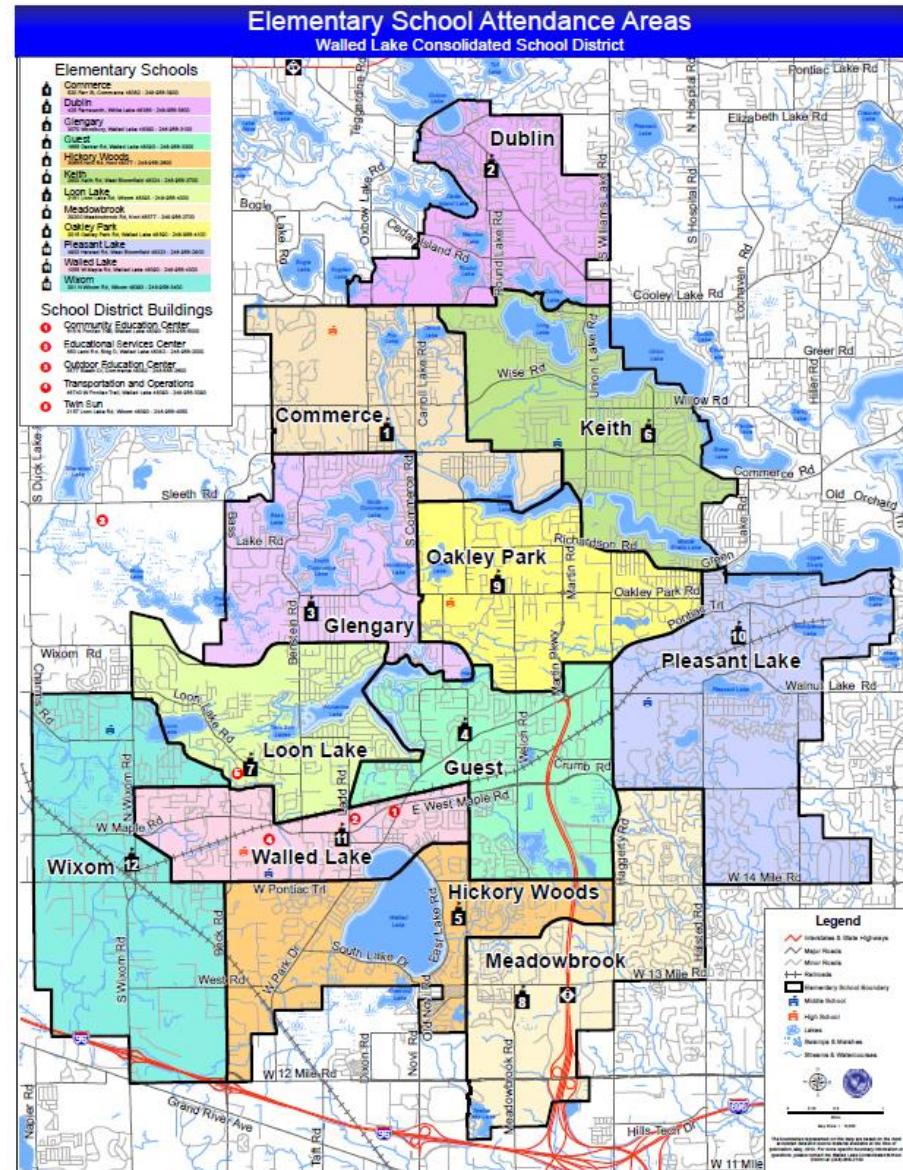




Existing Boundary Maps

Elementary Schools




- 1** **Commerce**
520 Farr St, Commerce 48382 - 248-956-3900
- 2** **Dublin**
425 Farnsworth, White Lake 48386 - 248-956-3800
- 3** **Glengary**
3070 Woodbury, Walled Lake 48390 - 248-956-3100
- 4** **Guest**
1655 Decker Rd, Walled Lake 48390 - 248-956-3300
- 5** **Hickory Woods**
30655 Novi Rd, Novi 48377 - 248-956-2600
- 6** **Keith**
2800 Keith Rd, West Bloomfield 48324 - 248-956-3700
- 7** **Loon Lake**
2151 Loon Lake Rd, Wixom 48393 - 248-956-4000
- 8** **Meadowbrook**
29200 Meadowbrook Rd, Novi 48377 - 248-956-2700
- 9** **Oakley Park**
2015 Oakley Park Rd, Walled Lake 48390 - 248-956-4100
- 10** **Pleasant Lake**
4900 Halsted Rd, West Bloomfield 48323 - 248-956-2800
- 11** **Walled Lake**
1055 W Maple Rd, Walled Lake 48390 - 248-956-4300
- 12** **Wixom**
301 N Wixom Rd, Wixom 48393 - 248-956-3400

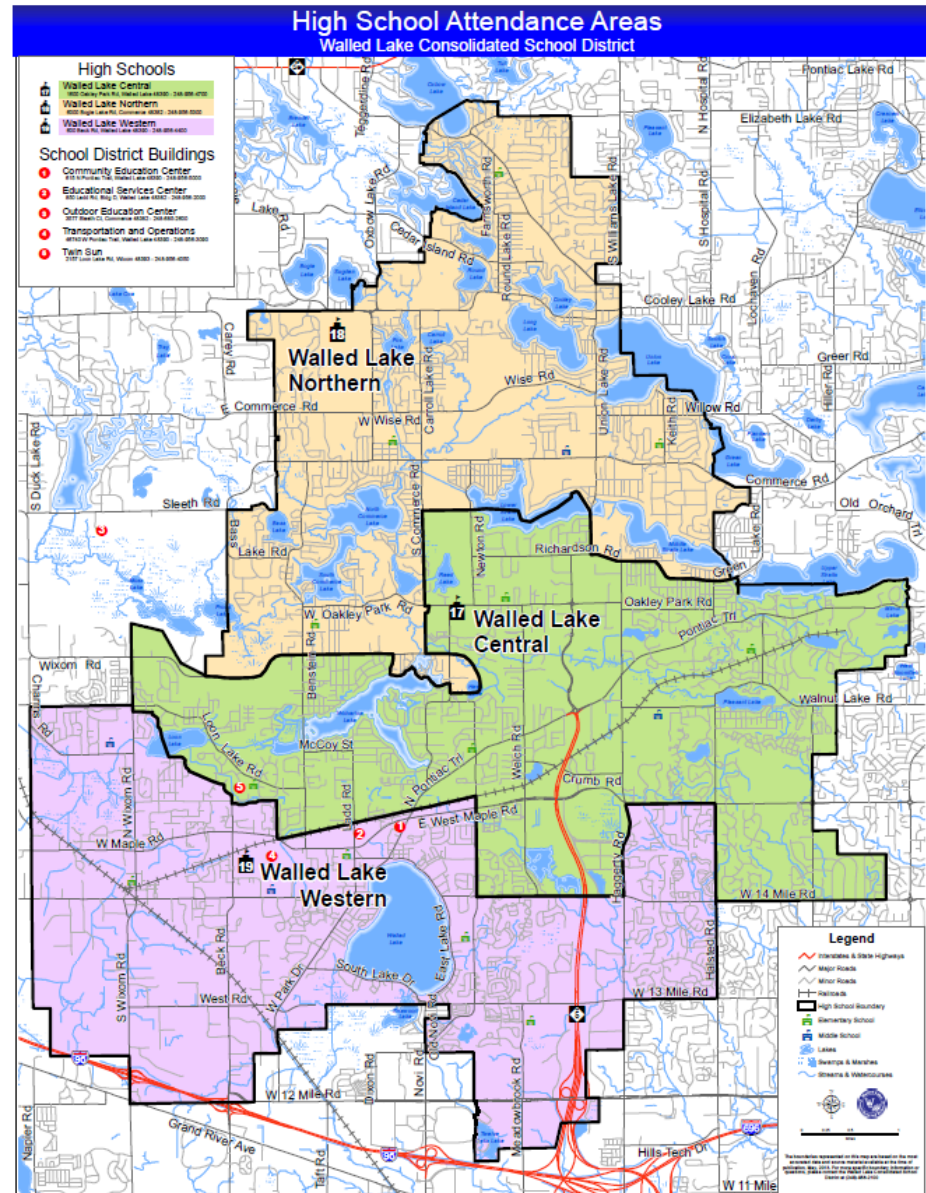




Existing Boundary Maps

High Schools

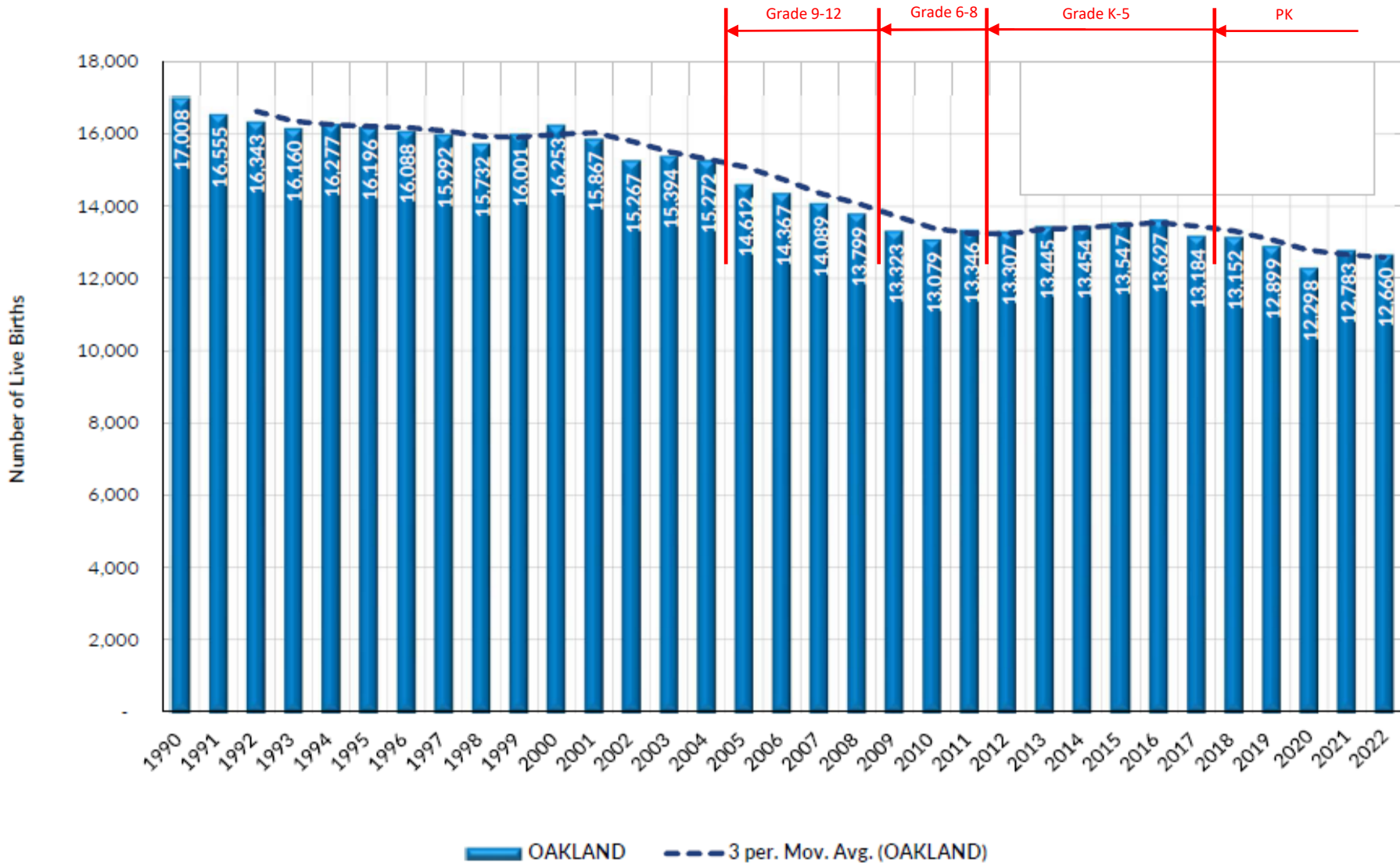
	Walled Lake Central 1800 Cooley Park Rd, Walled Lake MI 48393 • 248.878-4700
	Walled Lake Northern 4000 Eagle Lake Rd, Commerce MI 48323 • 248.878-8000
	Walled Lake Western 4000 Beach Rd, Walled Lake MI 48393 • 248.878-6400





Pupil Enrollment Process/Findings

Michigan Live Births by County of Residence *



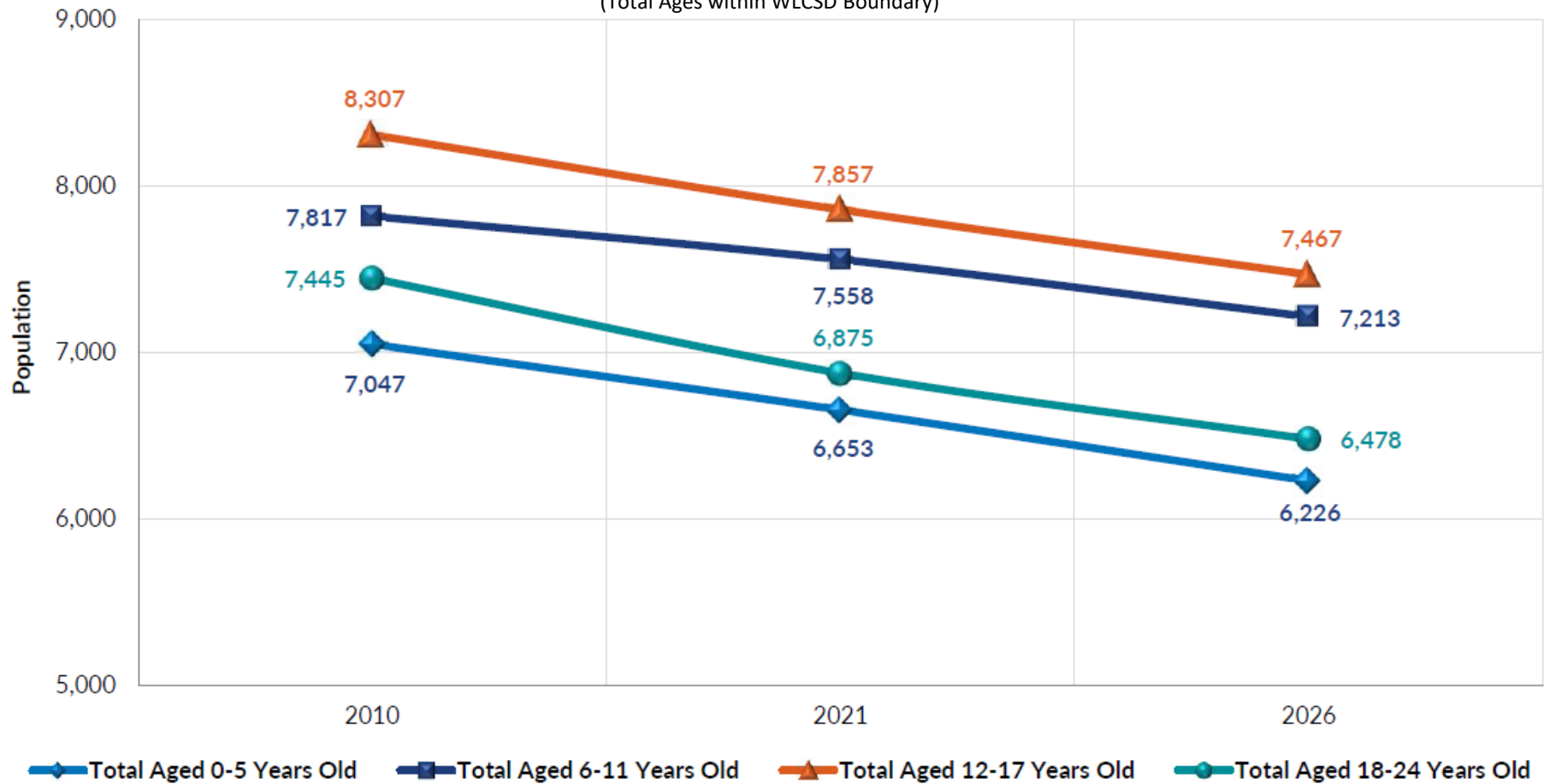
* Source: Michigan Resident Birth Files, Division for Vital Records & Health Statistics, Michigan Department of Health & Human Services



Pupil Enrollment Process/Findings

Walled Lake Consolidated Schools

Population Trend by Age Groups
(Total Ages within WLCSD Boundary)





Academic and Programming Overview

Elementary Buildings

Building	23-24 Enrollment (Actual)	24-25 Enrollment (Projected)
Commerce	542	555
Dublin	510	462
Glengary	329	332
Guest	333	324
Hickory Woods	531	512
Keith	533	531

Building	23-24 Enrollment (Actual)	24-25 Enrollment (Projected)
Loon Lake	518	475
Meadowbrook	570	567
Oakley Park	372	388
Pleasant Lake	491	465
Walled Lake	310	287
Wixom	436	386



Academic and Programming Overview

Middle Schools

Building	06-07 Enrollment	14-15 Enrollment	22-23 Enrollment	23-24 Enrollment (Actual)	24-25 Enrollment (Projected)	Programs	Rooms Used
Bank	857	655	553	594	538	SEI	3
Creek	893	678	657	642	637	ASD	5
Geisler	902	718	561	594	570	SXI	2
Smart	969	1,035	993	912	852	CI	2



Academic and Programming Overview

High Schools

Building	06-07 Enrollment	14-15 Enrollment	22-23 Enrollment	23-24 Enrollment (Actual)	24-25 Enrollment (Projected)	Programs	Rooms Used
Central	1,588	1,474	1,191	1,138	1,090	CI/SXI	5
Northern	1,739	1,612	1,482	1,463	1,400	ASD	3
Western	1,701	1,198	1,082	1,098	962	SEI/ATP	12



SECTION 2

Survey Format and Questions from Committee



Work Sessions and Questions from the Committee

Upcoming Work Sessions to review and provide the following;

- Confirm desired educational approach for remaining (3) Middle Schools
 - Opportunities/Challenges with current cohort alignment
 - Growth / expansion of current and future programs
- Confirm desired target enrollment and utilization at each building level
- Consider reconfiguration to better align with the enrollment at ES and HS levels
- Consider required improvements for relocated ATP programs/services
- Consider location for ESC and Twin Sun program/services

What Does It All Mean?

- Information that is still needed?
- What questions do you as a Committee have



SECTION 8

Next Steps and Considerations



Next Steps and Considerations

Upcoming Meetings/Next Steps

- **Facility Utilization Committee Kick-off Meeting – Thursday, September 12, 2024**
 - Opportunity to confirm the 2023 recommendations, inquire about information needed
- **Facility Utilization Committee Work Session– Thursday, September 26, 2024**
 - Review in-depth for (4) Middle Schools (site, facility, academics, capital needs, etc.)
- **Facility Utilization Committee Work Session– Thursday, October 17, 2024**
 - Draft option(s) for Board of Education Work Session
- **Board of Education Work Session – Thursday, November 7, 2024**
 - Opportunity for the BOE and community to review Option(s)
- **Facility Utilization Committee Work Session – Thursday November 13 (if needed)**
- **Board of Education Meeting – December 5, 2023**
 - Final review / adoption for Middle School going forward



Helping to Plan the Future

Paul Wills, AIA, LEED AP | Partner
(248) 223-3316
paul.wills@plantemoran.com

David Goldman | Senior Consultant
(248) 603-5071
david.goldmand@plantemoran.com

pmrealpoint.com | (248) 223-3500