

Facilities and Technology Capital Levy

Proposed Measure for November 5, 2025 Election



Recent Capital Funding History

February 2001 - \$61M Bond collected over 20 years passed at 63.2%

February 2018 - \$40M Capital Levy collected over 4 years passed at 61%

February 2022 - \$36M Capital Levy collected over 4 years passed at 56%

February 2024 - \$242M Bond Proposal Failed at 38%

Proposed November 2024 - \$31.9M Capital Levy collected over 6 years

Why Run a Levy Now?

**Aging facilities and systems
require improvements,
upgrades, replacements**

**Backlog of projects and needs
that exceed current funding**

**Current Capital Levy funding
will drop drastically in 2025**

**Inflation Continues - costs will
continue to rise over time**

**Capital improvements are not funded by the state. School
districts must rely on local voter approved funding to
maintain and improve buildings and technology.**

How did we decide what to include in the proposed capital levy?

Convened New Facilities Advisory Committee

- Committee application and selection process in March of this year
- Larger, more diverse group of stakeholders
- 27 members
- Every school has representation

Site Assessments at all facilities by Bassetti Architects

- Full review and inspection of all physical buildings this Spring
- Facilities experts and engineers conducted site visits and recommendations
- Survey of staff
- Meetings with administrators, staff, parents and community to understand needs



How did we decide what to include in the proposed capital levy?

Facilities Advisory Committee Work

- 8 Meetings from April through July
- 4 school tours (Hilder Pearson, Suquamish, Wolfle, KMS)
- All meeting minutes and presentations posted online and shared in District Newsletters - [visit nkschools.org/fac](https://nkschools.org/fac)
- In-depth analysis of site conditions for all facilities
- Hosted 3 community meetings to answer questions and gather feedback
- Reviewed comprehensive list of needs
- Identified priorities based on: Safety and Security, Program Equity and Accessibility, and Critical Building System/Mechanical Improvement needs
- Consideration for urgency of need and feedback from staff and families
- School Board updated at each Board Meeting



Proposed Facilities and Technology

Levy Project Overview

Safety and Security

Secure entry vestibules

Vehicle circulation

Drop-off/pick-up improvements

Perimeter fencing improvements

Lighting and cameras

Equitable Facilities and Programming

Gymnasium addition

Classroom additions and renovations to support students with disabilities

Accessible paths

Athletics Improvements

Student gathering/play area improvements

Building System/Mechanical Improvements

HVAC improvements

Mechanical system improvements

Exterior painting and sealing

Asphalt/parking lot repairs

Exterior rekey of all buildings

Technology

Chromebook/device replacements

Educational software renewals

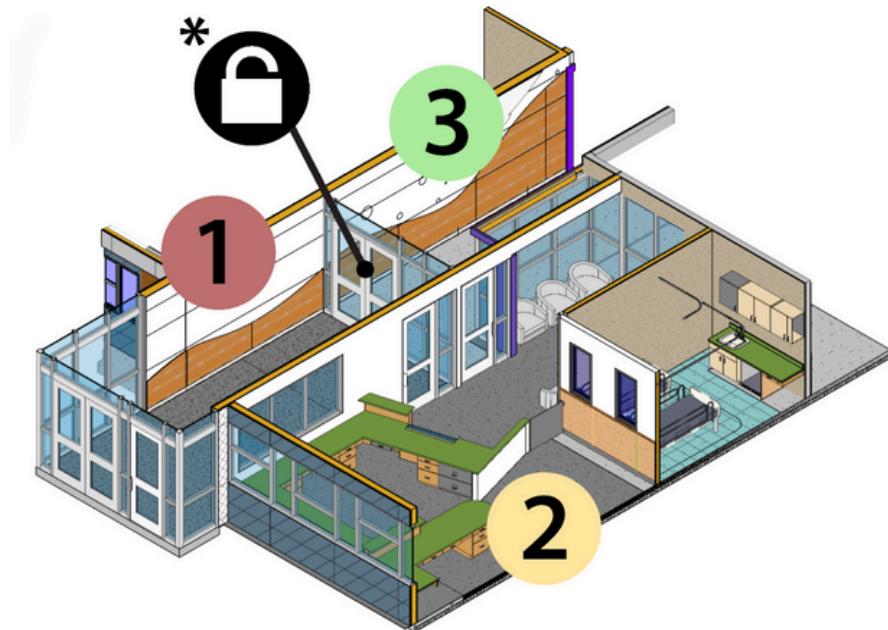
Infrastructure improvements

Project Detail by School

David Wolfle Elementary

Levy amount allocated: \$1,904,000

- Secure entry vestibule - provides controlled access to the school so that all visitors are directed into the front office and greeted by a staff member.
- Vehicle and school bus circulation and drop-off/pick-up improvements
- Site accessibility improvements - sidewalks, pathways
- Site safety and security improvements - including perimeter fencing and stormwater improvements
- Exterior facility improvements (exterior painting and sealing as needed)



*Secure Entry Example

Project Detail by School

Hilder Pearson Elementary

Levy amount allocated: \$6,145,500

- Gymnasium addition - Provides a separate, dedicated PE space for improved educational program scheduling. Will be planned and designed to allow for possible future school replacement on site.
- Vehicle and school bus circulation and drop-off/pick-up improvements
- Mechanical improvements to extend the useful life of the school building and ensure student and staff health and safety.

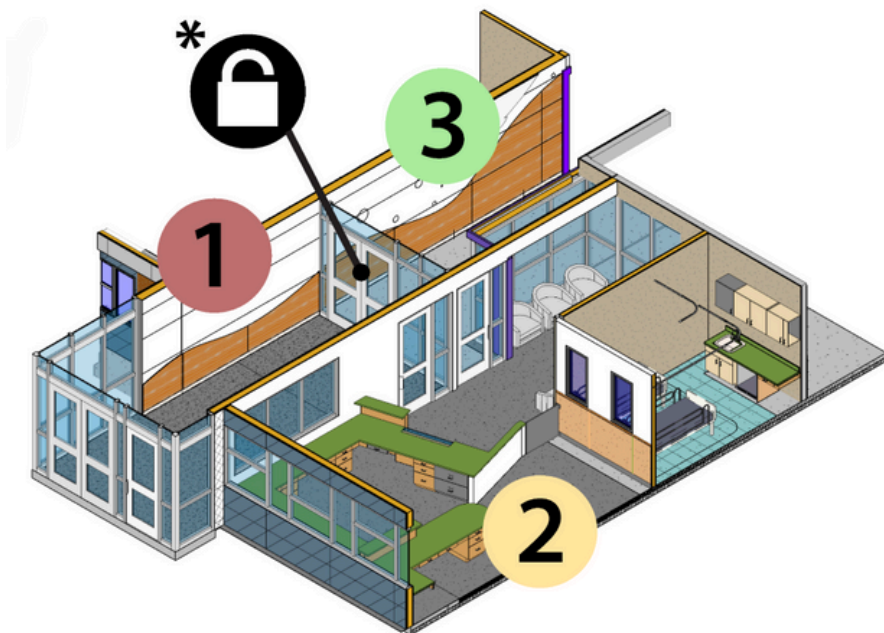
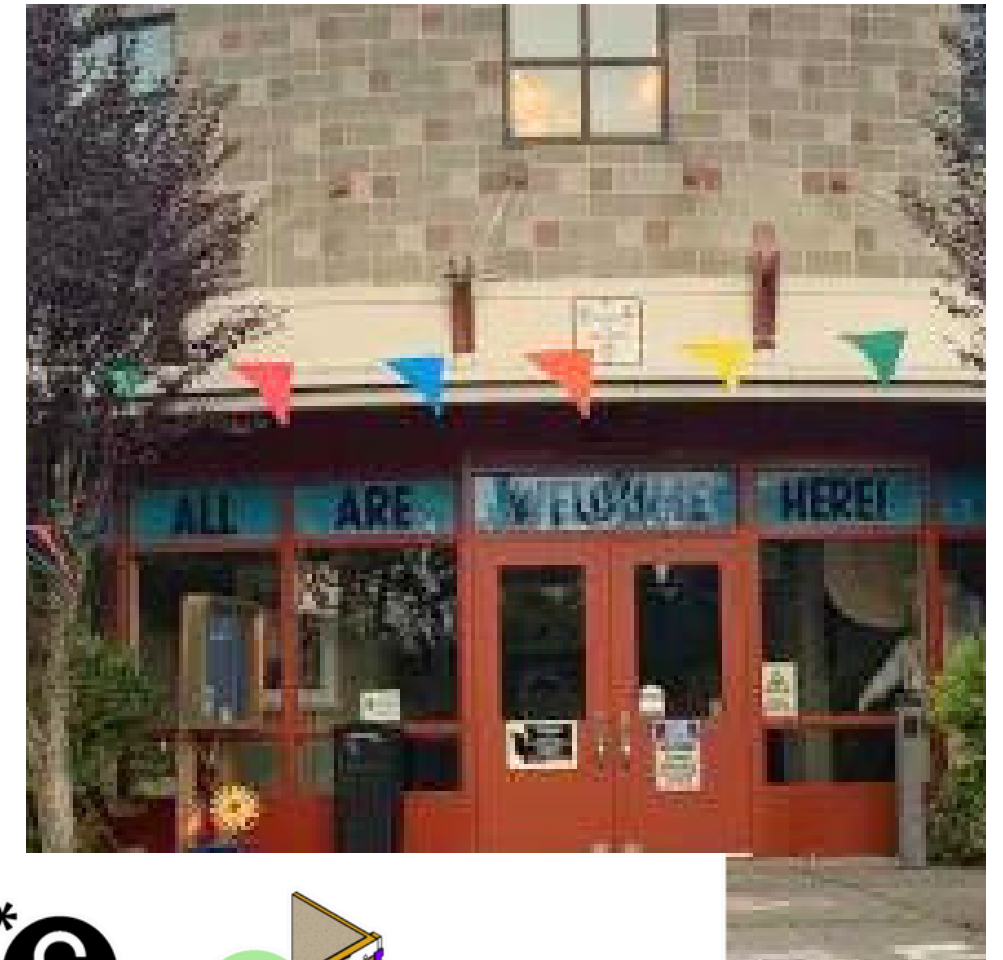


Project Detail by School

Richard Gordon Elementary

Levy amount allocated: \$1,295,000

- Secure entry vestibule - provides controlled access to the school so that all visitors are directed into the front office and greeted by a staff member
- Site accessibility improvements - sidewalks, pathways
- New playground



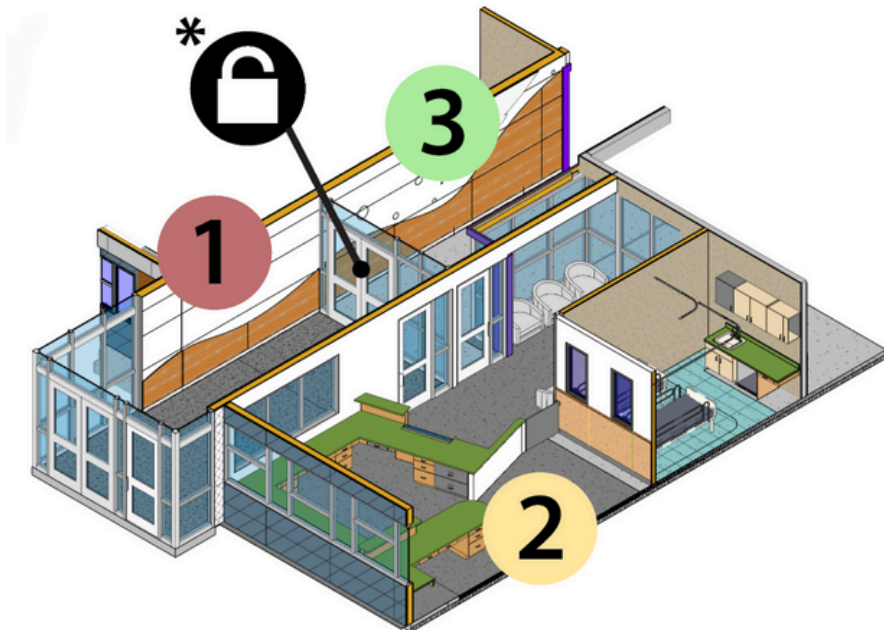
*Secure Entry Example

Project Detail by School

Poulsbo Elementary

Levy amount allocated: \$606,000

- Secure entry vestibule - provides controlled access to the school so that all visitors are directed into the front office and greeted by a staff member.
- Site safety and security improvements - includes perimeter fencing improvements



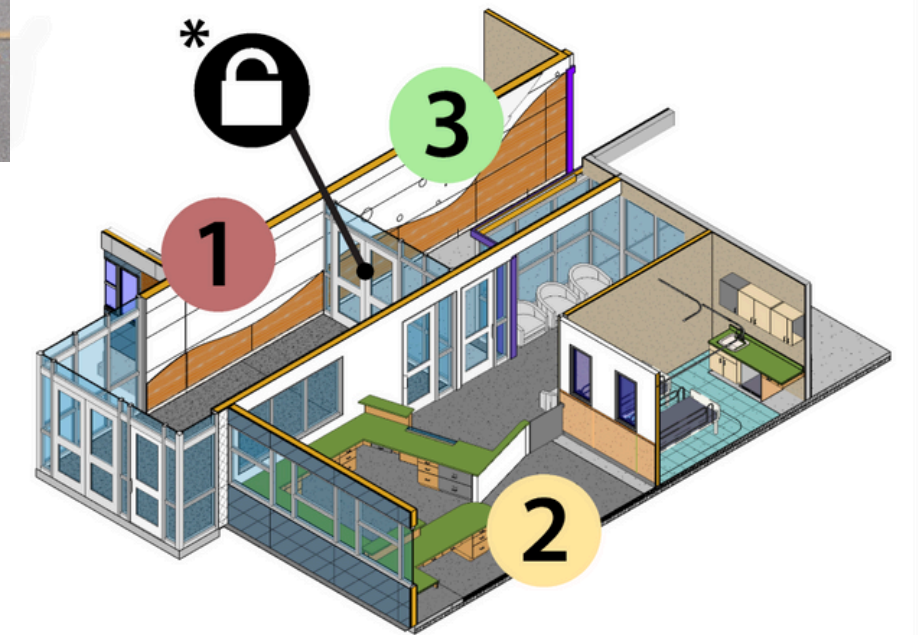
*Secure Entry Example

Project Detail by School

Suquamish Elementary

Levy amount allocated: \$5,001,000

- Secure entry vestibule - provides controlled access to the school so that all visitors are directed into the front office and greeted by a staff member.
- Classroom and student resource addition to support students with disabilities and occupational therapy, and renovations to bring all classrooms into the building
- Vehicle circulation and drop-off/pick-up improvements - includes increasing the parent vehicle queue.
- Site accessibility improvements - includes accessible paths
- Site safety and security improvements - includes perimeter fencing improvements
- Exterior facility improvements (exterior painting and sealing as needed)
- Mechanical improvements to extend the useful life of the school building and ensure student and staff health and safety



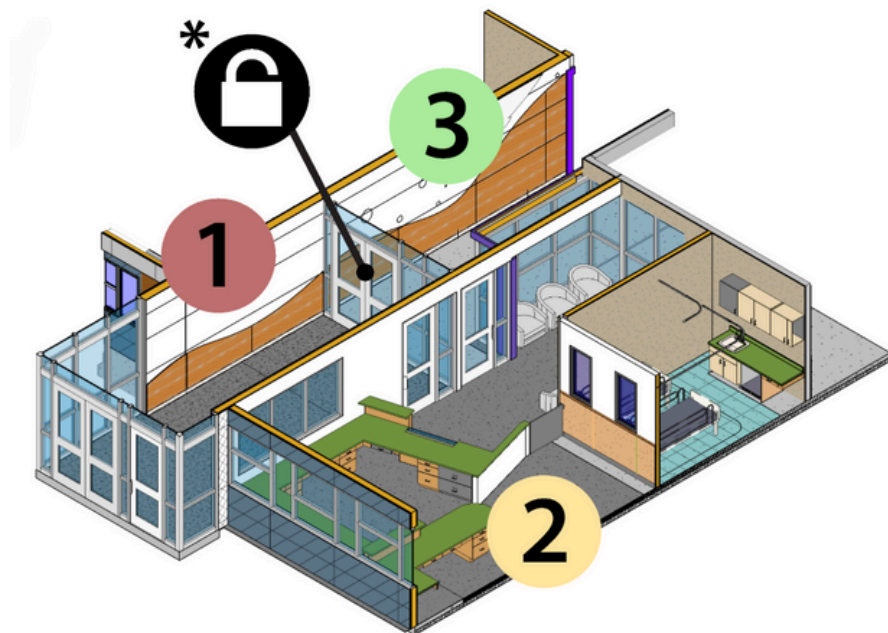
*Secure Entry Example

Project Detail by School

Vinland Elementary

Levy amount allocated: \$2,756,500

- Secure entry vestibule - provides controlled access to the school so that all visitors are directed into the front office and greeted by a staff member.
- Vehicle circulation and drop-off/pick-up improvements
- Site accessibility improvements - includes ADA-accessible paths
- Site safety and security improvements - includes improved perimeter fencing



*Secure Entry Example

Project Detail by School

Kingston Middle School

Levy amount allocated: \$2,843,500

- Replace the cinder track with a rubberized track.
- Vehicle circulation and drop-off/pick-up improvements
- Student-centered site improvements include an improved and accessible student plaza/courtyard off of the commons
- Site safety and security improvements - include improved perimeter fencing and cameras
- Exterior facility improvements (exterior painting and sealing as needed)



Project Detail by School

Poulsbo Middle School

Levy amount allocated: \$1,507,500

- Replace the cinder track with a rubberized track.
- Site safety and security improvements - include improved perimeter fencing.
- Site surfacing improvements - asphalt repairs and sealing



Project Detail by School

Kingston High School

Levy amount allocated: \$1,102,500

- Improved stadium fencing and zoning
- Potable water at the baseball and fastpitch fields
- Vehicle circulation improvements - removing the utility building and providing additional parking
- Site safety and security improvements
- Bridge covering/roof/structural assessment



Project Detail by School

North Kitsap High School

Levy amount allocated: \$1,778,500

- Site accessibility improvements
- Student-centered site improvements - include improving the courtyard, landscaping, paths, and sidewalks near the commons.
- Exterior facility improvements (includes roofing improvements for the 100 building)
- Mechanical improvements to extend the useful life of the school building and ensure student and staff health and safety



Proposed Cost Information

\$31.9 Million
6-years

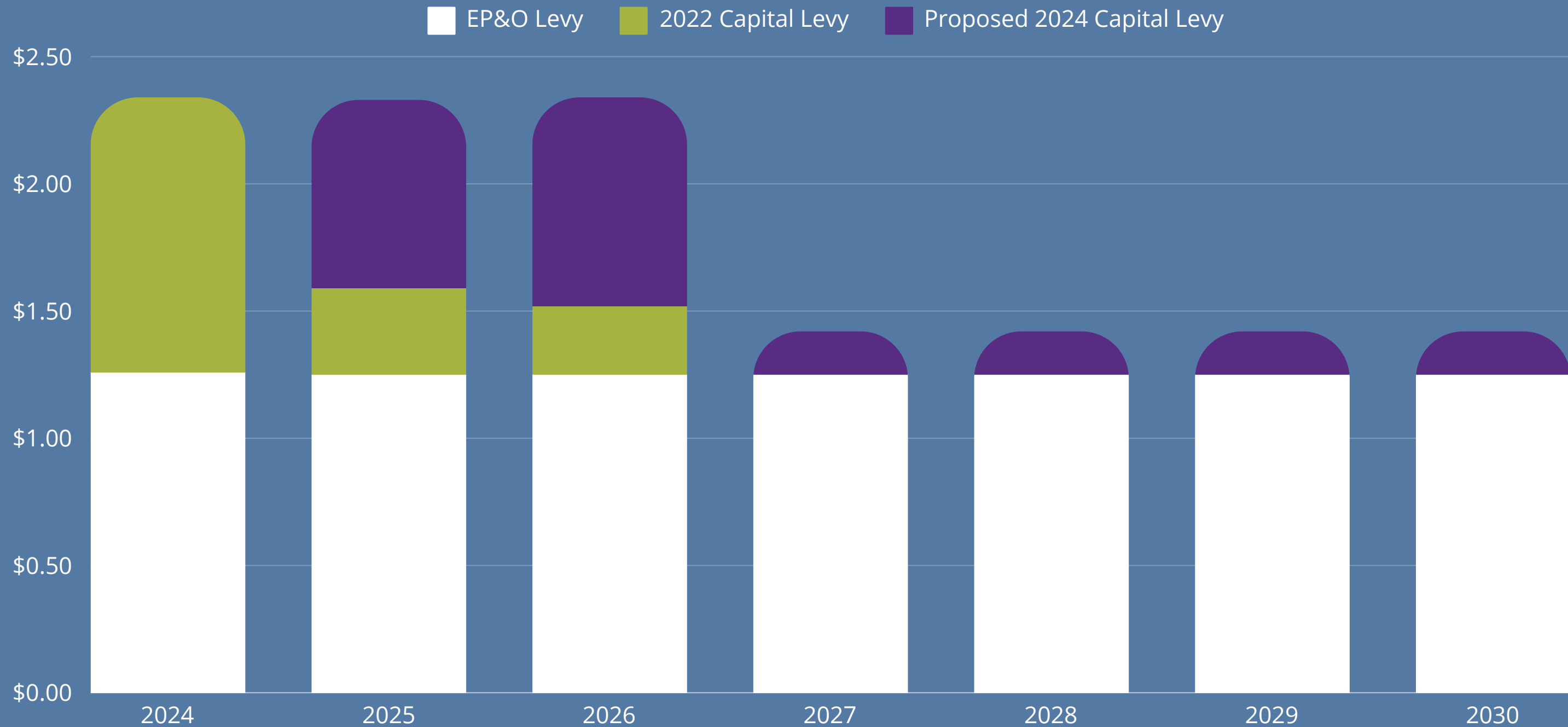
Election in **November 2024**
for **collection in 2025 - 2030**

Collection Year	Estimated Levy Rate Per \$1,000 AV	Levy Amount
2025	\$0.74	\$10,000,000
2026	\$0.82	\$11,500,000
2027	\$0.17	\$2,500,000
2028	\$0.17	\$2,575,000
2029	\$0.17	\$2,652,250
2030	\$0.18	\$2,732,000

Proposed Cost Information

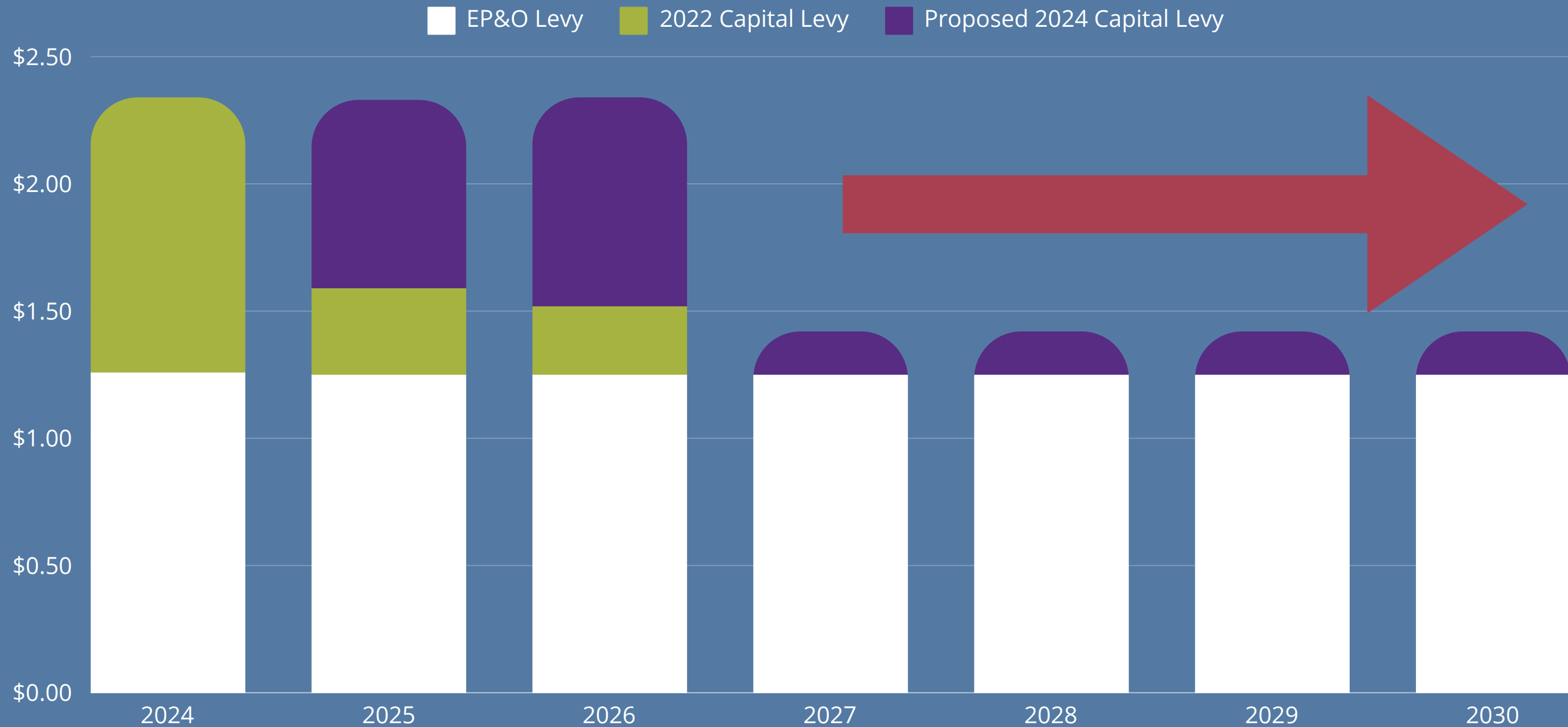
Collection Year	EP&O Rate/\$1,000 AV	2022 Capital Levy Rate/\$1,000 AV	Proposed 2024 Capital Levy Rate/\$1,000 AV	Total Local Rate/\$1,000 AV
Current Collection	\$1.26	\$1.08	N/A	\$2.34
2025	\$1.25	\$.34	\$0.74	\$2.33
2026	\$1.25	\$.27	\$0.82	\$2.34
2027	\$1.25	-	\$0.17	\$1.42
2028	\$1.25	-	\$0.17	\$1.42
2029	\$1.25	-	\$0.17	\$1.42
2030	\$1.25	-	\$0.17	\$1.42

Proposed Cost Information



If approved, the average assessed value per \$1000 would stay stable for 2025 and 2026.

Proposed Cost Information



Maintains capacity to run a capital levy or bond in the future as further long-range planning is finalized.

Timeline



August 6

Resolution Filing
Deadline



October 18

Ballots due to
voters



November 5

Election Day

Need More information?

Visit our website at nkschools.org/2024levy



Tax information



List of projects by school



Facilities Advisory Committee process and data



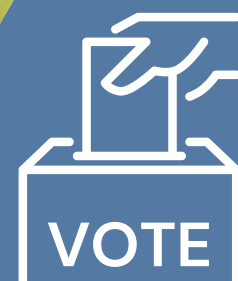
Frequently Asked Questions



Questions?

Thank You

Contact us at
communications@nkschools.org
with your questions



**PLEASE REMEMBER
TO VOTE BY NOV 5, 2024.**

Need to register? Visit: voter.votewa.gov.

