



HUMAN SERVICES COUNCIL

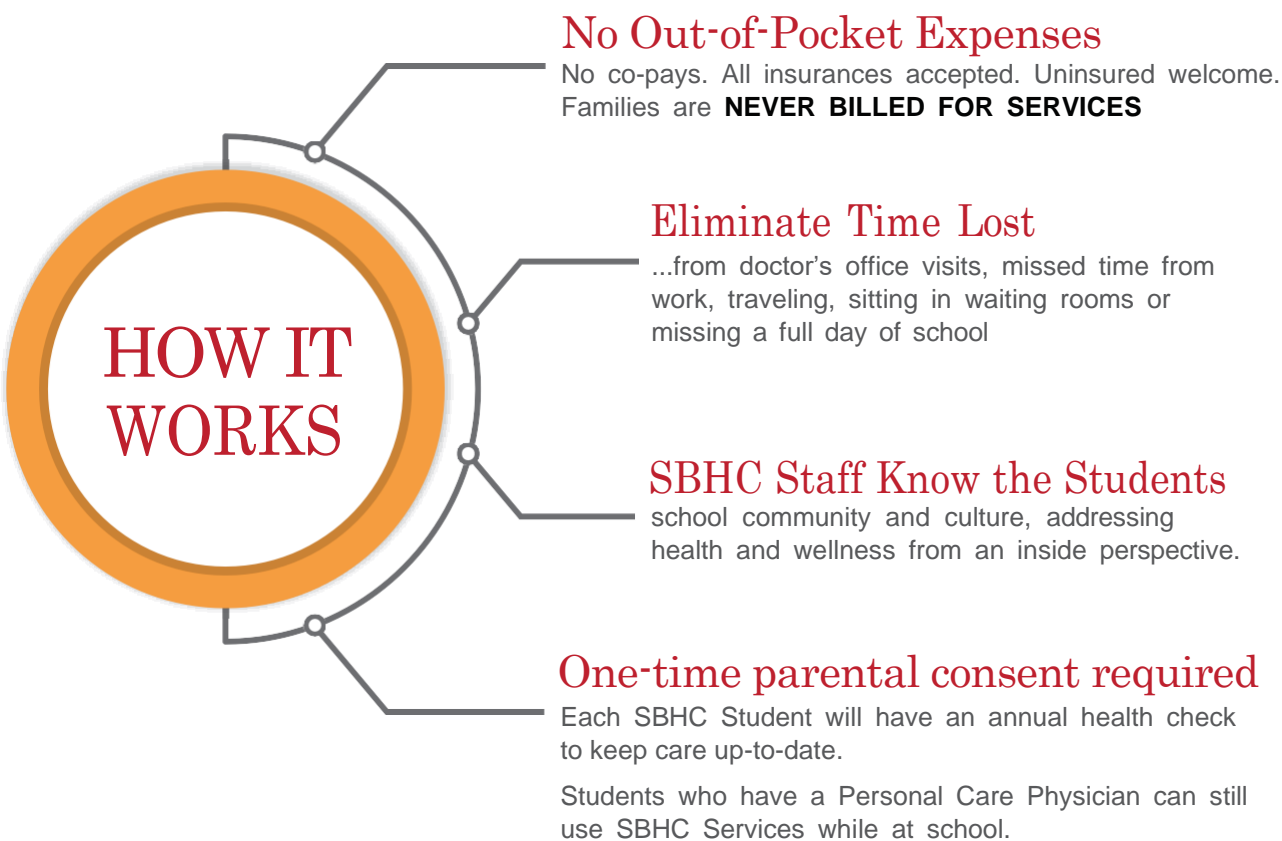
Healthcare in your school when you need it the most.



*Dr. Robert E. Appleby  
School Based Health Centers*

### Greater Access to Healthcare

Provide a full range of medical services, health screenings, mental health services, and care for students when they are sick ...all within your child's school.  
Our goal is to keep students healthy, in the classroom, and ready to learn.



### LOCATIONS

#### Norwalk HS

23 Calvin Murphy Drive  
203-838-4481 x 13340

#### West Rocks MS

300 Highland Ave  
203-899-2970 X 17651

#### Nathan Hale MS

176 Strawberry Hill Rd

#### Roton MS

201 Highland Ave.203-203-354-1960

### CONSENT

Please email completed consents to:

<https://hscct.egnyte.com/ul/T6UirZZIYC>



### HIPAA Protected:

Call or stop by to make an appointment with the Nurse Practitioner/Social Worker on staff.